



RockvilleArtLeague.org Vol. XXXIV No. 3 November 2024

Next Meeting: Thursday, November 7, 7PM
Photographer Michael Koren on *Artistic Expression with Mobile Photography*

Message from the President, Patrick Sieg

Dear Rockville Art League artists,

The hot, dry and sultry days of summer are firmly in our rearview mirrors. The cooler, fresher and invigorating air of fall is here, and the colors are always a beautiful surprise. I am motivated to be creative this time of year and hope you feel a similar sense of urgency.

Getting started on a new creation can be challenging in any season. You can never know if your artwork will turn out. Even the most confident artist will wonder if their work will be appreciated and meet expectations, especially their own.

Creating art, regardless of your medium, is never easy and sometimes you simply have to “go for it.”

“Creativity takes courage.” Henri Matisse

And we are so very grateful that our members support our league every year by renewing their memberships, encouraging their art friends to become new members, participate in shows and presentations on zoom, and help make us better with suggestions and assistance. Personal upload links and passwords, needed to enter RAL shows including the winter juried show, have been shared with all new and renewing members. And we hope you have renewed and will enter our shows and share your work.

November 1 is the deadline for submitting work to our Juried Members’ Winter Show.

The Rockville Art League’s juried shows are beautiful, and I believe being included in these exhibits is an honor.

Lisa Sieg has pulled together important information about our show in the call for entry, included later in this newsletter. Please make time to read it thoroughly.

Perhaps the most important element when entering a juried art show is simply taking a risk and putting yourself and your artwork *out there*.

Not every piece entered can be accepted in our exhibit due to the popularity of this show and space considerations. And not every piece that is accepted will win a prize.

But every artist that believes in their work and is willing to share is a true winner. Entering our show is an act of generosity and a manifestation of the art spirit.

We rely on our judges to make selections based on their talent, observations and experience. The judges we select are accomplished and make great efforts to consider every piece.

Dr. Lorena Bradford will be supporting the show as our juror. Through her study and work in the National Gallery of Art, Lorena has a unique and informed perspective on art and artwork so please demonstrate how talented you are by entering your best work.

If your work is accepted, then please be sure it is exhibition-ready, professionally finished (framed or with painted sides of the canvas) and securely wired for hanging. Take pride in your artwork. Again, please read the show call for details including the schedule and important dates.

Thanksgiving is the week before our artwork delivery date so please plan ahead.

Dr. Bradford gave members a taste of her expertise and point of view when she guided us through a look at and discussion of Berthe Morisot's "The Mother and Sister of the Artist." With her help we enjoyed a pleasant and informative hour of "Looking Together", beginning with our initial impressions of the work, progressing to closer inspection, and then finding out the fascinating back story of this beautiful and famous painting. The hour went by so quickly and I was surprised at what I learned.

"There are painters who transform the sun into a yellow spot, but there are others who, thanks to their art and intelligence, transform a yellow spot into the sun." Pablo Picasso

Our speaker in November will be photographer Michael Koren. He has presented to our group in the past and we are looking forward to hearing from him again. He will share tips on smart phone photography and editing techniques and share some of his photographic artwork.

Fall is an exciting time for the Rockville Art League, and I am happy and proud to be associated with such an esteemed group of artists.

Sincerely,
Patrick Sieg
President

Rockville Art League Speaker Series

The presentations this fall will continue to be on Zoom. Invitations will be sent out a few days prior and also posted on the Rockville Art League website.

Thursday, Sept. 12, Dr. Irina Stotland, *The Ukrainian Avant-garde*

We were honored to welcome back Irina Stotland to discuss the work of these select artists of the Ukrainian Avant-garde of The School of Paris, David Burluk, Sonia Delaunay and Alexandra Exter who are important to Modern Art; two of them are women and one of the women, Sonia Delaunay was the first female artist to have been given a retrospective at the Louvre. Their stories are as fascinating as the work they produced. If you missed her talk, please watch the video for an in-

depth overview of these important artists; it is available on the RAL website at the very bottom of the page by clicking on the YouTube icon.

Thursday, October 3, 7:00 PM Lorena Bradford on *Let's Look Together*

We were delighted to welcome Dr. Lorena Bradford from the National Gallery of Art for an evening of looking at art together. And we thank her for guiding us as we looked at a work of art together and facilitating an interactive conversation. It was a pleasant hour to slow down and truly luxuriate in the selected work – beginning with initial impressions to closer inspection, to observations from the group, and then finding out the fascinating back story. The piece is on display at the National Gallery of Art and would be well worth a trip to see in person. The zoom recording was sent out to RAL members on October 5. Please watch it within the next 30 days.

Thursday, Nov. 7, 7PM Photographer Michael Koren on *Artistic Expression with Mobile Photography*



Please join us for Michael Koren's presentation and see what your smart phone can do! With the convenience of the camera that's always with you, and the effortless ability to share pictures, the capability to create and have fun with photography has never been easier. Learn how to overcome limitations of a smartphone's camera and go beyond taking a snapshot to creating an artistic expression. This presentation will discuss the motivations and rewards of taking pictures with a smartphone by demonstrating camera app best practices to get better pictures from your mobile photography. You will also see a demonstration of a world class editing app to help bring forward your artistic expression.



Michael Koren is a free-lance sports and event photographer in the Baltimore Washington metro area specializing in youth sports' game-time action and team portraits. Michael has worked professionally photographing model portfolios, corporate portraits, product photography for catalogs, and client advertising campaigns.



Michael's passion for photography is shared through his skill as a photography educator. Michael teaches classes at Montgomery College and Capital Photography Center on a diverse variety of photographic topics including Composition, Mobile Photography and Street Photography. He leads

numerous seminars and workshops for local businesses, large and small, and offers personal instruction on topics ranging from beginner to advanced level.



Michael has served as President, Director and Education Chair of the Silver Spring Camera Club in Maryland and serves as Vice President of the Maryland Photography Alliance. For more information, please visit his website:

<https://www.michaelkorenphotography.com/>

Membership Call: Time to Renew!

Please support the Rockville Art League by renewing your membership. Our membership year runs from **September 1, 2024, to August 31, 2025**, and if you haven't already, please renew your membership. RAL dues are **\$40 for the entire year**.

Please renew and take advantage of our *members only* exhibition opportunities, the presentations and networking, and other benefits that can help you grow as an artist. We have 6 meetings a year, currently on zoom with excellent speakers, discussions, and demos. Please visit the website <https://rockvilleartleague.org> and click on the word *Membership* to see a complete list of membership benefits.

We kicked off the year on **September 12** with an in-depth presentation by art historian Dr. Irina Stotland on *The Ukrainian Avant-Garde*. On **October 3**, Dr. Lorena Bradford from the National Gallery of Art guided us as we engaged with a selected piece of art together. **Nov. 7**: we welcome photographer Michael Koren on *Artistic Expression with Mobile Photography*.

Our monthly meetings this fall are on Zoom. Zoom invitations are sent out a few days prior to the email you receive your RAL mailings. They are also posted on the website.

IMPORTANT: Please be sure email is the one you check often and read. If your email has changed and you'd like to update it, you may easily do so by updating your preferences at the very bottom of the RAL mailings – or let us know.

We have two large, juried member shows, in winter and spring, and both feature virtual exhibits on the website and are in person at the Glenview Manion Art Gallery.

We also offer members unique opportunities. An example of a recent show opportunity was the beautiful ***RAL Water, Water Everywhere Show*** on display this summer at Glenview (and virtual on the website). We are getting ready for our ***RAL Juried Member's Winter Show***. Please see the call for entries in this newsletter. Your **personal link and password** to enter this show and other RAL shows this membership year is sent to members in good standing by Patrick Sieg.

Membership is \$40. You can easily renew on the RAL website “pay now” button or if you prefer to pay by check, please make it payable to ***Rockville Art League*** and mail to:
Rockville Art League
c/o Rob Gale
108 W. Argyle St.
Rockville, MD 20850

Thank you to those who have already renewed, and a warm welcome to new members!

Unsure of your membership status? Please send a note to: president@rockvilleartleague.org

RAL Juried Members' Winter Show

DECEMBER 8, 2024 – JANUARY 17, 2025

Glenview Mansion Art Gallery

Call for entries: OCTOBER 1 – NOVEMBER 1. *Online submissions only.*

Judge: We are honored that Lorena Bradford will judge our Juried Members' Winter Show.

Lorena Bradford has a Ph.D. in art history from the University of Delaware. She currently develops and oversees accessible programs and projects in the department of Learning & Engagement at the National Gallery of Art in Washington, DC. Additionally, she works with the Kennedy Center, the Smithsonian, and Scribely on accessible features, including audio description and writing. She has consulted and offered training on best practices for other museums and institutions in Washington, DC, across the nation, and abroad.

On Exhibit: This juried show will be on display in person **December 8 through January 17** at Glenview Mansion Art Gallery (603 Edmonston Dr./Rockville) with the virtual show available on our website. Prizes awarded on **Sunday, Dec. 8, 2:00pm at Glenview.**

Please read all the information below carefully.

Call Deadline: *Members in good standing* may submit up to **two (2) pieces** of work to be considered by the judge for inclusion in this show **beginning October 1** through **Friday, November 1**. No submissions will be accepted after the deadline.

- This is NOT a themed show. We have 2 large, juried member shows a year, one in winter and one in spring. You may enter up to 2 pieces of your best work that have not been accepted in a RAL Juried Members' Show to be considered for inclusion.

If your work is accepted into this show, you will be informed **by Monday, Nov. 11** with delivery of artwork on **Tuesday, Dec. 3**. Please note that the amount of time to frame your work is brief, especially with the Thanksgiving holiday.

Entry Fee: A flat \$10 show fee will be collected **from artists that have their work accepted into this show** (not per piece).

IMPORTANT! By submitting work into this show, *you are agreeing to the terms of the Show Agreement* listed here:

“I agree to the rules of the show as presented in this show call and the schedule below, that my entries are my original works and have not been accepted into a previous **Rockville Art League Juried Members' Show**. I will not hold the Rockville Art League (RAL), Glenview Mansion, or the City of Rockville responsible for any possible loss or damage to my entries. As with any show, I understand that all reasonable care will be taken in the handling of my artwork. I give RAL, Glenview Mansion, and the City of Rockville permission to use images of my artwork and publish them as appropriate. I acknowledge a commitment to donate 20% of the sale price of my work, if sold during this show at Glenview to the City of Rockville.”

Eligibility and rules: The following rules apply for all works entered.

- Each *member in good standing* may enter *up to two (2) pieces by the deadline*.
- **How to enter:** **submit your entries using your PERSONAL LINK and PASSWORD** that WILL be emailed to you emailed to you **by the end of September**. Entries of *up to 2 pieces per artist for consideration* by the judge may be submitted by **Friday, November 1**.
- **For each submission:** you will be required to include: the **title, medium, dimensions** (note: depth is for sculpture only) and **market price** (NOT wholesale price!) (If the piece is Not for Sale, please leave blank and you will be contacted to confirm this) and **submit an image** (jpeg or jpg.) of your piece. The mat or the frame (or glass, glare, wall, furniture etc.) should NOT be visible in the image you submit. Just the artwork itself.
- **If your work is accepted into this show:** a \$10 show fee per artist (not per piece) will be collected at that time.
- RAL retains the right to determine suitability of work for entry in this show.

Artwork requirements: If your work is accepted into this show, *each 2-D piece must be ready for hanging*, gallery-wrapped or framed or professionally finished, **securely wired** by Tuesday, Dec. 3.

- The maximum measurement of any framed side is **48 inches**.
- Only **original works** **framed securely with hanging wire** are acceptable. (NO sawtooth hangers or such.) If submitting unframed canvas, edges should be painted or finished.

- NO WET PAINT is allowed.
- The **entries may NOT have been exhibited** previously in a *RAL Juried Members' Show*.
- All artists are encouraged to sign their work on either the front or back.
- Entries not meeting the show conditions will not be accepted.
- All work must remain up until the end of the show.
- **Sales:** If any work sells while on display at Glenview, the artist agrees to donate 20% of the sales price to the City of Rockville as specified in the *Show Agreement* above.

Categories of Artwork Include:

- Oils and acrylics
- Watercolors
- Pastels, drawings, and hand-pulled prints
- Mixed media, collage, experimental, and original computer-generated art
- Photographs
- Sculpture and ceramics

Awards:

- Best in Show (cash prize)
- First, Second, Third in all categories (cash prizes)
- Honorable Mention at Judge's Discretion

Schedule:

- **October 1 - November 1** - you may enter up to two (2) pieces for consideration online using the link that will be sent to you by the end of Sept. Up to two (2) pieces per artist.
- **Friday, November 1** – Deadline for submissions
- **Monday, November 11** – notifications of acceptances sent out to all members by this date. A show fee of \$10 (per artist) will be collected from those whose work is accepted into the show at that time.
- **TUESDAY, Dec. 3**– *delivery of accepted artwork* at Glenview, **10:00am-1:00pm**; if your work is accepted into this show, you or your designee must deliver your work during this time. The judge will award prizes based on an in-person view that afternoon.
- **Sunday, December 8**, 1:30-3:30pm, *Meet the Artists Opening* at Glenview Mansion. Lorena Bradford will **award prizes at 2:00pm** with remarks about the work. She will also be available during the afternoon to talk with artists.
- **Week of Dec. 9:** A zoom video of the judge discussing her awards choices will be sent out to all members.
- **TUESDAY, January 21** - **pick up artwork** 10:00am-1:00pm. You or your designee must pick up your work on this date.

Please note: *Members in good standing** will have their personal link and password emailed to them the LAST WEEK of September. **PLEASE SAVE IT.** It will be the same one you use to enter all RAL shows this year.

**If you paid your dues for Sept. 1, 2024 – Aug. 31, 2025, you are a member in good standing.*
PLEASE: *if you are unsure of your membership status, ask us!*

You will use your personal link/password that will be sent to you at the end of September to enter your work in the show. Be sure to type in the information specified in this note for your entries carefully and clearly.

This information will be used to contact you and to create the virtual show and the labels.

Note: When you submit work, *if you entered artwork in the past several RAL Shows*, you may see the images of those pieces. They are marked appropriately for those shows within the system.

If you need help, **please ask ahead of the deadline!**

You may enter work for this show October 1 through November 1.

Deadline for all entries is **Friday, November 1.**

Notifications of acceptances will be sent out to all members and posted on the Rockville Art League website **by November 11.** This call for entries will be also posted on the website.

Questions regarding the show? Need help or support with the entry process?

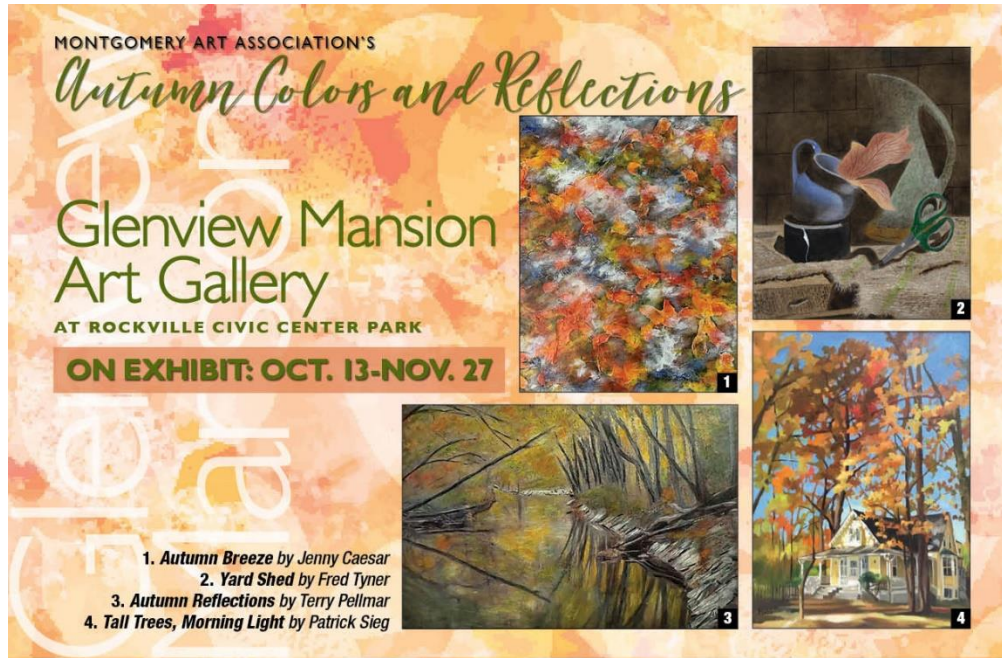
Please contact:

Lisa Sieg: jshows@rockvilleartleague.org

Patrick Sieg: president@rockvilleartleague.org

Glenview Mansion Art Gallery Exhibitions

Glenview Mansion Art Gallery is located at 603 Edmonston Dr. at the Rockville Civic Center. Open weekdays, Monday – Friday, 9:00am-4:30pm. Please check the Glenview Mansion website <https://www.rockvillemd.gov/389/Glenview-Mansion> *before* coming out or call 240-314-8681. There is plenty of parking and an elevator to all levels of the gallery. The gallery is located on the 2nd floor. It is quiet and uncrowded during the week. ***Meet the Artists*** events are free and open to the public. Thank you for supporting the arts and your fellow artists.




On Exhibit: Oct. 13-Nov. 27

MONTGOMERY ART ASSOCIATION'S
Autumn Colors and Reflections

Meet the artists from 1:30-3:30 p.m. Sunday, Oct. 13.
Event is free and open to the public.

For information, call 240-314-8681 or 240-314-8660.
For recorded directions, call 240-314-5004. *Glenview Mansion Art Gallery is wheelchair accessible.*
Gallery Hours: Monday-Friday, 9 a.m.-4:30 p.m.; gallery is closed on official city holidays.

Glenview Mansion
Art Gallery
at Rockville Civic Center Park
603 Edmonston Drive
Rockville, MD 20851



Glenview Mansion Exhibition

Montgomery Art Association's *Autumn Colors and Reflections*

On Exhibit: October 13 – November 27

Autumn is a beautiful season of the year. The leaves start to change color and the weather cools down. It is a time of harvesting and reflection as the earth slows down before the winter. One of the most defining characteristics of the fall season is the new colors that fill the landscape, with the falling leaves turning red, yellow, and orange. Many artists depict landscapes with saturated hues that symbolize a sense of change or slowing down after the long summer days and warmer nights have passed. In

celebration of this burst of colors, Montgomery Art Association (MAA) presents this exhibit of beautiful fall paintings, fused glass art, and mosaics.

This show is sponsored by the City of Rockville.

Rockville Art League

Juried Members' Winter Show

On Exhibit: December 8 – January 17

Juried by Lorena Bradford. Please read details in the *call for entries* in this newsletter. This is one of our semi-annual large, juried member shows, with one in the winter and another in the spring. Members may enter up to two (2) pieces of their best work to be considered by the judge. This is not a themed show; the word winter just indicates the time of year. Entries accepted **October 1 - November 1**.

Rockville Art League

Winter Garden

On Exhibit: January 26 – February 14

All details for this *themed* show that will be in conjunction with the **2025 Rockville Student Juried Art Show** will be forthcoming. We will be looking for your original creations of botanicals to transform the gallery into a *winter garden*. Please note: we are not accepting any entries for this themed show until December.

Virtual Shows, Sales, and Inquiries

Virtual shows are updated and posted to the Rockville Art League website by webmaster Michael Auger. The recent RAL exhibition may be over but the RAL *Water, Water Everywhere Show* is currently available to view.

How to access the current virtual show and past ones:

Go to <https://rockvilleartleague.org> and click on the button for the current virtual show, *RAL Water, Water Everywhere Show*. (If you haven't visited the RAL website lately, you may need to hit refresh.)

Once you open the current virtual show, you can view all the work in the show, or if you prefer to see it by *specific artist*, click on the word "**Artists**" and, if you would like to view it by category of artwork, click on the word "**Rooms**". If you are interested in a specific piece, you can click on that artwork. If you would like **to view a past virtual show**, click on the word "**Exhibitions**" and you will see the show cards from prior shows.

Find the show card of the one you would like to view and click on the name of the show (ex: *RAL Juried Members' Spring Show*, and *Portraits: Creatures Great or Small*) right below the show card and you can view that show. (Note: RAL's Artwork Archive account has the capacity to store up to 1000 images of artwork; as new shows are uploaded, the works in past shows are no longer viewable. We do retain records with images of work from past shows.)

You can inquire or send a purchase request on the piece on the virtual show. On occasion, we receive inquiries for work in past shows still viewable through our virtual shows. Any inquiries or purchase requests are forwarded to the artist.

These shows are beautiful thanks to our talented members.

RAL Speaker Series Presentations Available on YouTube

We offer 6 presentations a year in our *Speaker Series*. Because we meet on zoom, they are recorded and are sent out to members and, also, posted on RAL's YouTube, thanks to Helen Wood. If you have missed any of them, you can access them by going to the Rockville Art League website and scrolling to the very bottom of the page. Once there, click on the small icon to the left of the word YouTube.

MEMBER NEWS



Elizabeth Steel's welded steel sculpture, "Guita's Garden," will be exhibited in the Montgomery Art Association's "Exploring Color, Shape, and Texture" show at the Goldman Gallery, JCC, November 3-December 15. The reception is scheduled for Sunday, November 17, 12-3 pm.



Lily Kak's aqueous media collage painting "Autumn Glow on the Ganges River," received the First Prize at the Montgomery Art Association's Autumn Colors and Reflections Show. The show is at the Glenview Mansion, Rockville, from October 13-November 27, 2024.



Barbara Bell has an upcoming solo show, "Turning Points: Watercolors and Photography," at the Kensington Park Library from November 2-29. The library is located at 4201 Knowles Avenue, Kensington, MD. [Kensington Park Library - MCPL \(montgomerycountymd.gov\)](https://www.montgomerycountymd.gov/KensingtonParkLibrary)

Barbara began her formal training in art while on leave from university teaching. She worked in studio arts at Montgomery College (Rockville) in the 1980s, concentrating on lithography. Before she re-entered the workforce as a teacher in Montgomery County Public Schools, her works hung in numerous local exhibitions. Twenty years later, retirement afforded her time to resume her artwork, and she took up watercolor painting and photography. She studied painting with the late Leroy Lawson and for the past fifteen years, with nationally recognized watercolorist David R. Daniels. In 2019, she was awarded signature membership in the Baltimore Watercolor Society. Barbara uses her photographs as a major resource for her paintings and has recently begun to exhibit them as works in their own right.

“Turning Points” is an exhibition of Barbara’s large watercolor paintings and several of her new photographs. This November, amid national and local election turmoil, Bell turns her attention to significant and reassuring transitions in the natural world from one season to the next. Her paintings also include references to her family history that depict universal themes of shared cultural experience. Most evident in the paintings and photographs is her effort to break new ground in her work as an artist, striving to create paintings and photographs that connect in a meaningful way with her viewers and provide a few moments of peace and calmness in their lives.



Sandy Yagel received an Honorable Mention for her watercolor painting, “Dressed for Success” in the Olney Art Association's 50th Anniversary show juried by Greg Mort. The OAA show is at the Sandy Spring Museum through November 17.



She also received a Merit Award for her painting, “Spent” in the Baltimore Watercolor Society's MidAtlantic Show juried by Russell Jewell. The BWS show is at the Kentland Mansion and Art Barn throughout January 5. (Her painting is hanging in the Art Barn.)



“Highly Animated” is a juried art exhibit celebrating animation, anime, cartoons, and comics! The Exhibit opens Saturday October 19 and runs through November 30. There is an Artist Alley marketplace on November 23rd from 5pm—7pm. Featured Artists: **Michael Auger**, Chris Brown, Mijin Chun, Lindsey Clifford, Kira Godley, Tom Kemp, Trei Ramsey, Ruger Steele, and Regina Williams. The beachKraft Art Gallery, 18200 Georgia Ave Unit N + O, Olney, MD 20832 [Current Exhibits | thebeachkraft site](#)



You are invited to join **Ken Bachman** for the opening reception beginning at 6:30pm on Thursday, November 7, for “Capturing the Moment,” a solo exhibit at the Women’s National Democratic Club of a selection of his recent landscape oil paintings, including the pictured works. The exhibit will continue through February 4.

The Women’s National Democratic Club is located at 1526 New Hampshire Avenue, NW, near Dupont Circle. Refreshments will be served. If you wish to attend the reception, please email pfitzgerald@democraticwoman.org, For more information visit: www.democraticwoman.org



www.Kbachmanart.com

Ephraim Rubenstein

The Pastel Work At Stone Tower 2 Gallery October 5 - November 3

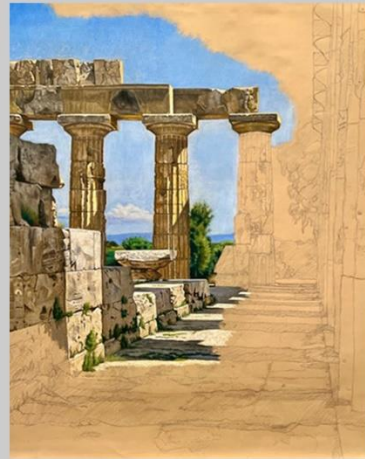
Gallery Hours:

Thursdays - Sundays - 11:00 - 5:00pm

Artist Reception:

Saturday, October 5 - 6:00 - 8:00pm

Ephraim Rubenstein's pastel works capture the fleeting moments where light and form converge to reveal deeper truths about his surroundings. Utilizing pastel's immediacy and intimacy, he engages directly with the essence of his subjects. The tactile medium allows him to layer colors and textures, building surfaces that echo the complexities of the natural world.



Stone Tower 2 at Glen Echo Park -
7300 MacArthur Blvd.
Glen Echo, Maryland 20812

Ephraim Rubenstein – *THE PASTEL WORK*

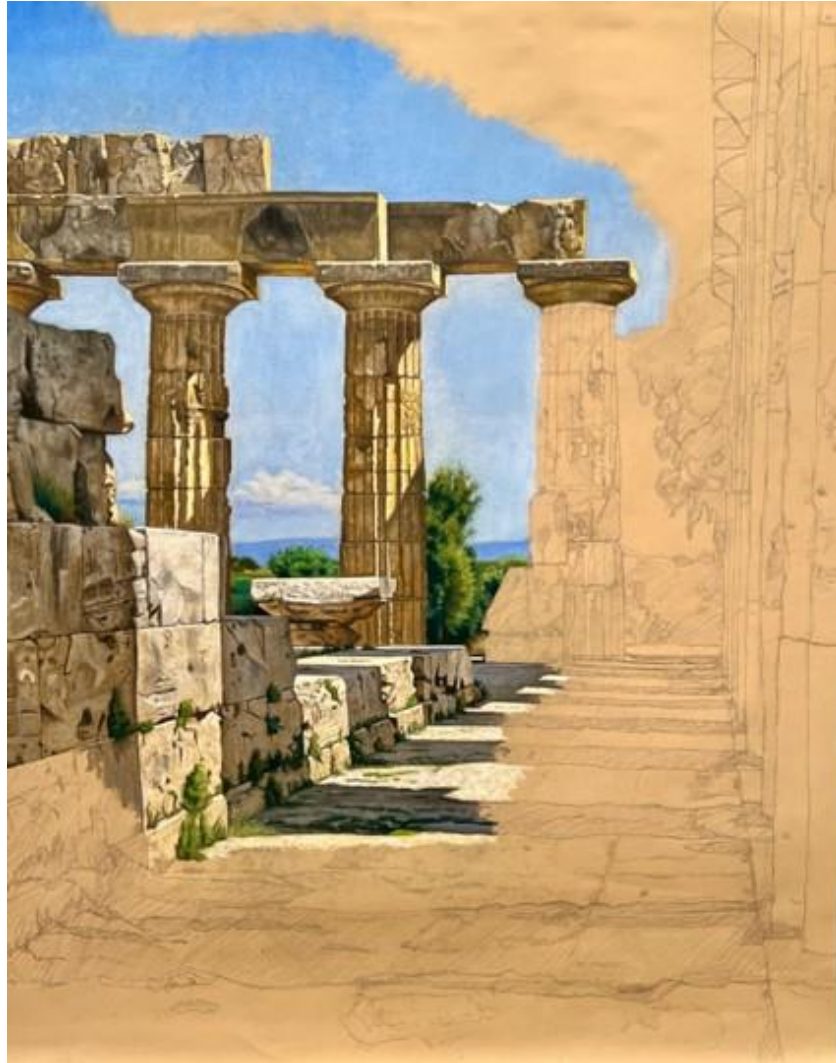
On display at the Stone Tower Gallery 2nd Floor from **October 5 through November 3**

Gallery Hours: Thursdays-Sundays – 11:00am-5:00pm

Stone Tower 2 Gallery, 7300 MacArthur Blvd, Glen Echo, MD 20812

Ephraim Rubenstein's pastel works capture the fleeting moments where light and form converge to reveal deeper truths about his surroundings. Utilizing pastel's immediacy and intimacy, he engages directly with the essence of his subjects. The tactile medium allows him to layer colors and textures, building surfaces that echo the complexities of the natural world.

The pieces presented in this exhibition reflect both external landscapes and internal states of being. Rubenstein is drawn to scenes that resonate on a personal level—quiet interiors with figures bathed in soft light, architecture where shadows are dramatic and dance, and spaces that hold echoes of human presence.



By blurring the lines between drawing and painting, Rubenstein embraces observed color and drawn line giving us a glimpse of his process. Each stroke is a response to the moment, a dialogue between one color and the following stroke of a pastel, his perception and the subject before him. The richness of pastel enables him to convey not just the visual appearance but also the emotional undercurrents that give a scene its resonance.

Visitors are invited to step into these moments, experiencing the textures, colors, and atmospheres that define them.

This is the first exhibition in the space by an ACO artist and the work is extraordinary.

<https://www.jjbruns.com/rubenstein-the-pastel-work/>

2025 CALL FOR ARTISTS

Rockville Student Juried Art Exhibit

City of Rockville's Arts Division and the Rockville Art League announce the 2025 Rockville Student Juried Art Exhibit.

Open to students in grades 6-12 who live or attend school in Rockville.



Eighty works are expected to be selected for the show. Art is not insured by the City of Rockville.

SCAN ME
for entry form



ELIGIBILITY REQUIREMENTS

1. Students in grades 6-12 who live or attend school within the City of Rockville corporate limits can enter two 2-D or 3-D works of art, in any medium, to be considered for the show.
2. Work must be appropriately finished, framed and securely wired for hanging. No wet paint.
3. Students need to complete and submit the online entry at <https://bit.ly/3ZHNjiL> by **Monday, Dec. 2.**
4. Students will be notified by Friday, Jan. 3 if their artwork was selected to be in the juried show.

www.rockvillemd.gov/arts • 603 Edmonston Drive, Rockville, Maryland

Interested parties can use this link: <https://bit.ly/3ZHNjiL>



2025 EXHIBIT CALENDAR

1. The delivery of selected artwork by the student or guardian from 4-6:30 p.m. on Tuesday, Jan. 21 at the Glenview Mansion Art Gallery. The gallery is located at Rockville Civic Center Park, 603 Edmonston Drive, Rockville, MD 20851.
2. The "Meet the Artists" event is scheduled from 1:30-3:30 p.m. on Sunday, Jan. 26.
3. The exhibit dates are Jan. 26-Feb. 14.
4. The pickup of artwork is scheduled from 4-6:30 p.m. on Tuesday, Feb. 18.

FOR MORE INFORMATION: Please contact Betty Wisda, Arts Programs Supervisor, at bwisda@rockvillemd.gov.

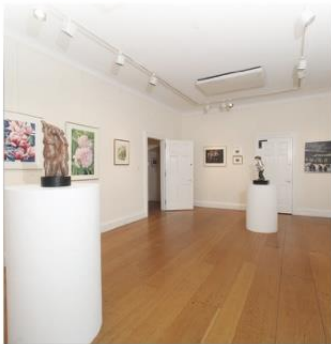


HOURS AND LOCATION

Glenview Mansion Art Gallery at Rockville Civic Center Park
603 Edmonston Drive, Rockville, MD 20851
Gallery Hours: Monday through Friday, 9 a.m.-4:30 p.m.; closed official city holidays.
Call 240-314-8660 to check on availability of gallery for viewing.



**Glenview Mansion
Art Gallery Exhibit
APPLICATION DEADLINE:**
5 p.m. on Monday, Dec. 2.



CALL FOR ARTISTS 2025

The City of Rockville celebrates its commitment to the arts through programs that reflect the diversity and vitality of the community. It is with great pride that the Glenview Mansion Art Gallery continues to showcase the finest artists in the region.

ELIGIBILITY: Open to all art leagues and organizations in the greater metro area (includes Maryland, Virginia and Washington, D.C.).

SELECTION PROCESS: All submissions will be reviewed by gallery staff along with an art professional.

CALENDAR: Entries due by **Monday, Dec. 2**; artist notification by **Friday, Jan. 3**.

GALLERY HOURS: Monday through Friday, 9 a.m.-4:30 p.m.; closed official city holidays and for special Glenview Mansion private events.

GALLERY SPACE: The floor plan below shows exhibition space in the Glenview Mansion Art Gallery, located on the second floor and accessible by stairs and an elevator. Exhibits are limited to gallery rooms 1-6 and connecting hallways. The walls can accommodate 100-120 works, depending on size, with space for three-dimensional works, either free-standing or on pedestals. Gallery windows are protected by UV film to prevent sun damage.



Interested artists and organizations need to complete and submit an online entry form at <https://arcg.is/i5TSO0>.

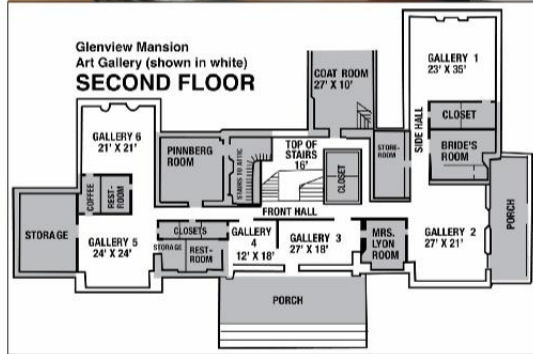
Submissions must include the following information:

- Name of group.
- Number of members.
- Contact's address, email, daytime phone number.
- Title/theme of exhibit.
- Exhibit proposal.
- Five to 10 images representative of your group's work.

Availability for Exhibit:

- Feb. 23-March 21, 2025.
- March 30-May 9, 2025.
- Sept. 7-Oct. 3, 2025.

Note: The \$150 administrative fee to help offset the cost of staging the exhibit is collected after applicants' acceptance.



For more information, contact:

Betty Wisda, Arts Program Supervisor, bwisda@rockvillemd.gov or 240-314-8681 or visit online at www.rockvillemd.gov/607/Art-Gallery.



www.rockvillemd.gov/arts • 603 Edmonston Drive, Rockville, Maryland

If you are interested, please copy and paste the link below in your browser; it will take you to the application. <https://arcg.is/i5TSO0>

Calling All Artists

Blossoms 2025 Countywide Art Show

**Call for Entry
NOW through Nov.1, 2024**

**Theme: Pink/White Blossoms
All Mediums • All Ages**

A Grant
From



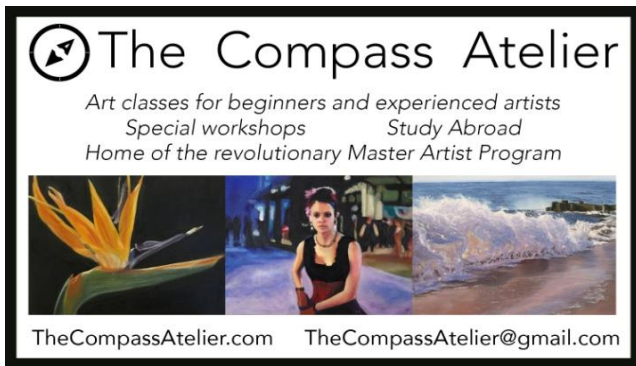
In Partnership With




The link to register is: https://artist.callforentry.org/festivals_unique_info.php?ID=13759

Discount on Custom Framing

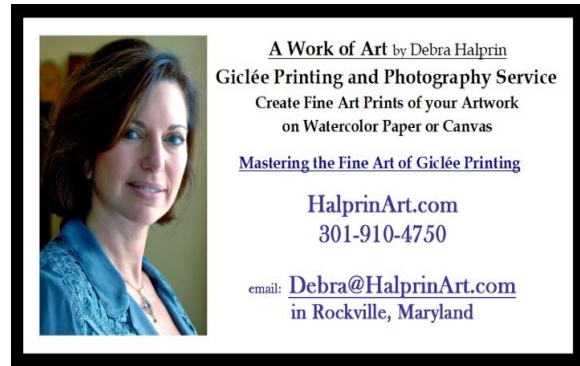
Jae Shin has been working as a professional picture framer for 2 decades at the Framers' Workroom located in Tenleytown, DC. Jae offers 15% off on custom framing jobs for RAL members. Please feel free to contact Jae for any framing jobs. Framers' Workroom, 4431 Wisconsin Ave., NW, Washington DC 20016
202-363-1970. Store hours: Mon-Sat 10:00-5:30. www.FramersWorkroomDC.com
Email: Jaeshin@FramersWorkroomDC.com



The Compass Atelier
Art classes for beginners and experienced artists
Special workshops Study Abroad
Home of the revolutionary Master Artist Program



TheCompassAtelier.com TheCompassAtelier@gmail.com



A Work of Art by Debra Halprin
Giclée Printing and Photography Service
Create Fine Art Prints of your Artwork
on Watercolor Paper or Canvas
Mastering the Fine Art of Giclée Printing
HalprinArt.com
301-910-4750
email: Debra@HalprinArt.com
in Rockville, Maryland

NEWSLETTER SUBMISSIONS

Is your art included in a show? Have other news you wish to share with RAL members?
Please send your submissions by the 15th of each month for inclusion in the next newsletter, to:
newsletter@rockvilleartleague.org

Glenview Mansion Schedule				
2024 - 2025				
Exhibition Dates:	ARTISTS	Delivery of Artwork 10am-1pm	<i>Meet the Artists</i> Opening Event	Pick-up Artwork 10am-1pm
Oct. 13 – Nov.27	Glenview Exhibition: Montgomery Art Association <i>Fall Reflections</i>	Monday, Oct. 4 10:00am – 1:00pm	Sunday, October 13 1:30-3:30pm	TUESDAY, December 3 10:00am-1:00pm
Dec. 8, 2024 – Jan. 17, 2025	RAL Juried Members' Winter Show	TUESDAY, Dec. 3 10:00am – 1:00pm	Sunday, Dec. 8 1:30-3:30pm	TUESDAY, Jan. 21 10:00am-1:00pm
Jan. 26 - Feb. 14	RAL Themed Show and Student Art Show	TUESDAY, Jan.21 10:00am – 1:00pm	Sunday, Jan. 26 1:30-3:30pm	TUESDAY, Feb. 18 10:00am-1:00pm

Artists displaying work in the gallery at Glenview Mansion will be contacted with detailed information about their shows, including the required show agreement. Labels and support to hang the show will be provided. The RAL shows are virtual on our website as well as in person at Glenview.

Meet the Artists opening events are free and open to the public. Plenty of parking and there is an elevator to all levels of the gallery. The art gallery is open weekdays Monday-Friday, 9am-4:30pm. Closed on official city holidays.

Please check Glenview Mansion website: <https://www.rockvillemd.gov/389/Glenview-Mansion> or call 240-314-8681 or 240-314-8660 before visiting.

Glenview Mansion is located at Rockville Civic Center Park, 603 Edmonston Dr., Rockville, MD.

Thank you for supporting the arts and your fellow artists!



RAL BOARD OF DIRECTORS

Name	Position	E-mail
Patrick Sieg	<i>President</i>	president@rockvilleartleague.org
Vacant	<i>President Elect</i>	president@rockvilleartleague.org
Lisa Sieg	<i>Vice President/ Exhibits Coordinator</i>	jshows@rockvilleartleague.org
Richard Fisher Sarah Sohraby	<i>Program Coordinators</i>	programs@rockvilleartleague.org
Lisa Sieg	<i>Volunteer Coordinator</i>	volunteer@rockvilleartleague.org
Vacant	<i>Membership Coordinator</i>	membership@rockvilleartleague.org
Rob Gale	<i>Treasurer</i>	treasurer@rockvilleartleague.org
Cathy McDermott	<i>Secretary</i>	secretary@rockvilleartleague.org
Susan Dunnell	<i>Newsletter Editor</i>	newsletter@rockvilleartleague.org
Liliane Blom	<i>Liaison Officer</i>	liaison@rockvilleartleague.org
Dave Allen	<i>Publicity/marketing</i>	publicity@rockvilleartleague.org
Helen Wood	<i>Communications</i>	communications@rockvilleartleague.org
Vacant	<i>Hospitality</i>	hospitality@rockvilleartleague.org
Diane Jeang	<i>Member Shows</i>	mshows@rockvilleartleague.org
Michael Auger	<i>Webmaster</i>	webmaster@rockvilleartleague.org
Eileen Mader	<i>Founder</i>	

Rockville Art League
P.O. Box 4026
Rockville, MD 20850

