



RockvilleArtLeague.org Vol. XXXIII No. 10 June 2024

Next Meeting: September TBD

Water, Water Everywhere Show

Opening at Glenview on Sunday, June 30, 1:30-3:30pm

Message from the President, Patrick Sieg

Dear Rockville Art League Artists,

We should be proud of our Rockville Art League this year and every year.

This year (September 2023 through August 2024) our membership was nearly 200 artists and close to our record count. Our members have choices about art groups and we appreciate their loyalty. You allow us to fulfill our mission.

There have been four exhibitions in the Glenview Mansion Art Gallery exclusively comprised of RAL members and their incredible creations. That count includes the Water, Water Everywhere Exhibit that will be on display in July and August.

I am thankful that our shows have a virtual presence to complement our on-site exhibits.

We had a successful and well attended Juried Members Spring Show opening on Sunday, May 19. We were so fortunate to have our judge Mariana Kastrinakis joining us in person to present awards and discuss our art. Soon we will be sharing a recorded presentation where she discusses the award-winning work.

Art is best seen in-person and in addition to the beauty of the individual artworks, there is excellence in the compelling way the show is curated and hung.

If you haven't had a chance to see it, please do yourself a favor and visit in person. And please bring your family and friends.

“Part of the joy of looking at art is getting in sync in some ways with the decision-making process that the artist used and the record that's embedded in the work.” Chuck Close

Many elements must coalesce to create a successful show...

- Our members need to be excited and motivated to share their art.

- For juried shows, artists understand that many pieces compete for limited space in the gallery.
- Thank you for risking rejection to be a part of our juried shows.
- The City of Rockville supports us in many ways, not the least of which is allowing RAL to use the Glenview Mansion Art Gallery. Our sincere thanks to Rockville and their Arts Programs Supervisor, Betty Wisda.
- Lisa Sieg, a RAL Board Member, leads our shows through planning, communications, support in answering questions and helping artists understand our system, organizing the entry process, making the art delivery and pick-up efficient, curating the show and finalizing a show that is pleasing in every room and on every wall. And our shows are synergistic...more beautiful in total than the sum of the beautiful, individual pieces.
- Several members volunteered to help Lisa with the spring juried show. Thanks to Joanne Liotta Aarons, Jennifer Lubell, Nancy Jakubowski and Cecelia Laurendeau for their help with the spring show (and other shows in the past). You are a pleasure to work with and fantastic award-winning artists and a pleasure to work with.
- RAL Board Members also support the effort... David Allen and Cathy McDermott always helps us hang and label our shows, Rob Gale prepares our award checks, Susan Dunnell promotes them in our newsletter and Michael Auger makes sure the shows are front and center on our website.
- We select judges who are drawn from different parts of the art community...successful professional artists or accomplished art historians, all of whom have many years of experience.
 - While we know our judges are qualified, they also work extremely hard, are empathetic and are dedicated to making our shows as beautiful as possible.
 - For this spring's show, judge Mariana Kastrinakis devoted many hours and made in-person visits to the gallery. Her decisions about which work could be included and which pieces deserved special award recognition were both incredibly difficult and most thoughtful.
 - Mariana went even further by joining us in person at our show opening and agreeing to discuss her choices in a virtual review.
- And finally, heartfelt thanks to all our RAL artists for promoting our shows with your friends and family and encouraging them to view our show either in person or virtually. I know many of you visit the shows multiple times, often bringing groups of art lovers along with them.

There will be one additional show before we wrap up our year. Please see the details on the upcoming show "Water, Water Everywhere" later in the newsletter.

We had a bonus presentation this spring from Dr. Irina Stotland. She covered the art movement Les Nabis and that group included Pierre Bonnard who is on display at the Phillips Collection. (Please see the show at the Phillips when you have a chance and before it departs in early June.)

We are very thankful for Dr. Stotland's support and expertise. We look forward to seeing/hearing from her again in September.

And I couldn't be prouder of the artists who comprise our league. Your artistry and support continue to amaze me.

I enjoy seeing you at our events, both the virtual ones and often, thankfully, in-person.

Sincerely,
Patrick Sieg
President
The Rockville Art League

Rockville Art League Speaker Series

If you missed previous talks, the videos can be viewed on RAL's YouTube which you can easily see by visiting the RAL website. Once there, scroll to the very bottom of the page and click on the YouTube icon. You can see this presentation and others. We thank Helen Wood for posting these presentations for RAL.

A note about our Zoom invitations for our presentations:

They are sent to members a few days prior. They will **also be posted on the Rockville Art League website** at that time, thanks to **Michael Auger**.

Mariana Kastrinakis' Remarks RAL Juried Members Spring Show 2024

It was a great honor and pleasure to be asked to jury the RAL Spring Show! I approached this task with great humility and admiration for the group's membership, who come together year after year to present wonderful exhibits for the public.

As was mentioned at the show opening, the artwork was selected "blindly" (i.e., I did not know who authored any of the pieces in any of the categories). A later in-person review after the pieces were submitted helped me make the final selection of the prize-winning art.

As I mentioned in my comments during the show opening, I believe that every person who has the courage to create and present an art piece for consideration and public viewing is a winner. Whether their piece makes it into the show or not, we have all seen or heard of artworks (sometimes our own) that were excluded from one show but went on to win awards at subsequent shows.

This demonstrates that judging an art show is a subjective endeavor. Judges strive to consider principles of composition and good design, technical handling of the medium (paint, collage, sculpture, photography), color harmony, and presentation. However, there is often another element in their consideration that is less definable: the emotional message conveyed by the work and the resultant emotion elicited from the viewer.

I admit that this latter element, which I can call "je ne sais quoi," carried a lot of weight in my choices, always in the presence of good technical handling within the work.

Among the different winning pieces, I chose some that felt transcendent to me. These included representations of human interactions in contexts of music or love, which conjured joy or rhythm; a pet observing its home with a gleam in its eye, inspiring goodwill for all creatures; and abstract pieces that referenced possible days at the beach, memories from other worlds, or even dark emotions, all of which were transporting. Impressive still lifes and landscapes that went beyond mere depiction invited me into their environments, and photos of gorgeous

landscapes or close-ups of nature reminded me of the beauty in the mundane. Notable ceramics and sculptures highlighted the intricacies of the three-dimensional world and reminded me of the plight of humanity.

Thus, appreciating and identifying good art is not a precise science but involves a deep recognition of its inherent humanity. As such, it is not and cannot be perfect; as we say, beauty is in the eye of the beholder, and I believe this to be true.

This, perhaps, is why we like (and make) art: it reflects so much of our universal humanity. We are looking for our own transcendence in making art, which may lead us to make peace, first within ourselves and then with the world. I hope and pray this is true.

I hope everyone at RAL continues to make art and persists in showing the world how beautiful it is to be human and to live on our planet. Please continue to spread the word! Many thanks!

Mariana Kastriakis

Rockville Art League Juried Members' Spring Show - Award Winners



Award	Art Title	Artist	
Best in Show	Mood Indigo	Michele	Morgan

Oils and Acrylics



First Prize

Second Prize

Third Prize

Honorable Mention

Honorable Mention

Honorable Mention

Honorable Mention

Honorable Mention

Ikebana Composition

Hydrangeas

Ikat Memories

Acadia Garden

Contra Music

The Apple of Her Eye

Forest 13

Steel Pan Rhythms

Patrick

Diane

Eleanor

Ken

Lachman

Karen

Jasmin

Beverly

Sieg

Weiner

Glattly

Bachman

Renee

Lantner

Smith

Valdez

Watercolors



First Prize

Second Prize

Third Prize

Honorable Mention

Honorable Mention

Honorable Mention

Honorable Mention

Pointers

Love Ancient Rome

Pink Blossoms

Flying Horses

Joy

Dock Workers

A New Day

Karen

Angela

Cecile

Barbara

Lily

Sue

Patricia

Norman

Lacy

Kirkpatrick

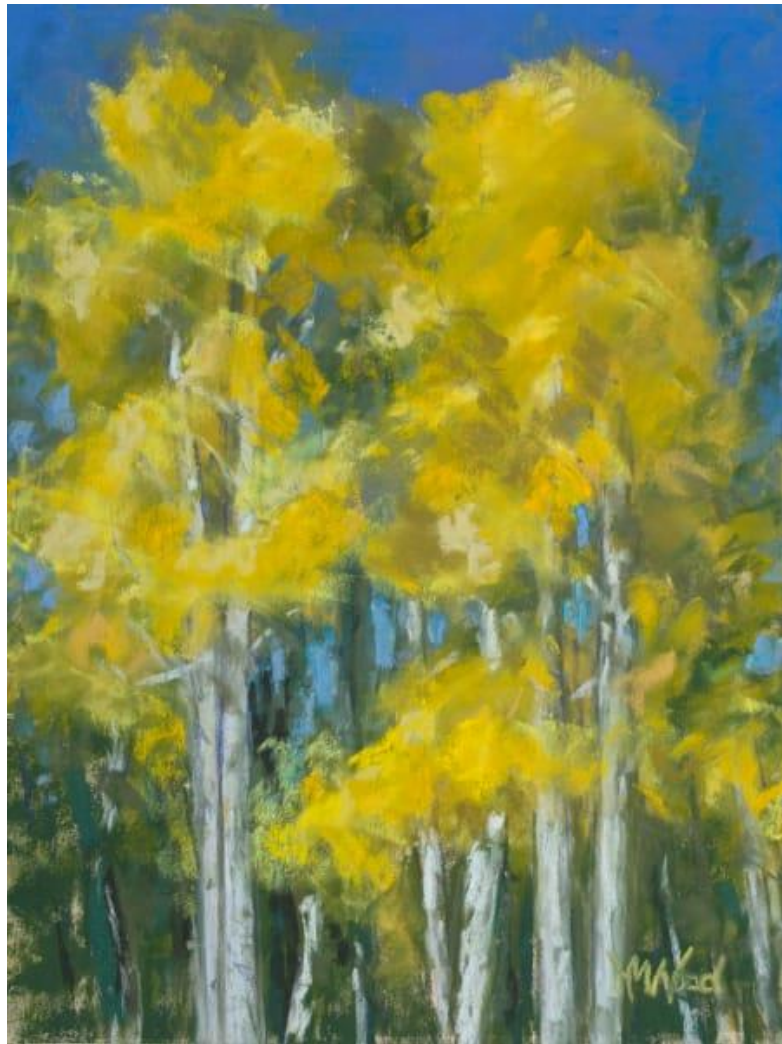
Bell

Kak

Moses

Schocke

Drawing, Pastels and Hand - Pulled Prints



First Prize
Second
Third Prize

Aspen Glow
Assateague Evening
Queen

Helen
Alexandra
Elissa

Wood
Michaels
Borzilleri

Mixed Media, Collage, Experimental and Original Computer-Generated Art



First Prize

Second Prize

Third Prize

Honorable Mention

Honorable Mention

Honorable Mention

Swing Time

Marseille

Demmerit

Glow

Bethany

Meadowside Morning

Stacy

Barbara

Michael

Sheila

Leslie

Joanne Liotta

Yochum

Meima

Hantman

Moldover

Hantman

Aarons

Sculptures and Ceramics



First Prize
Second Prize
Third Prize
Honorable Mention
Honorable Mention

Going to Mars
After
Comfort
Celtic Design
Fengxian Pasta Bowl

Pearl
A. Barry
Nancy
Barbara
Shonali

Chang
Belman
Jakubowski
Meima
Roy

Photographs



First Prize

Second Prize

Third Prize

Honorable Mention

Honorable Mention

Honorable Mention

Winter Aria

Sleeping Above the Clouds

Sycamores Dancing

White Anemone

Spring Forth!

Blowing Bubbles in Shinjuku Chuo Park

Lisa

Mauricio

Rob

Rebecca

Cathy

Chris

Sieg

Athie

Gale

Doran

McDermott

Kern

Rockville Art League
Water, Water Everywhere
June 30 – August 30
Glenview Mansion Art Gallery

Entries accepted: May 1 – May 29

Rockville Art League *members in good standing* are invited to submit original works of *up to three (3) pieces of art for consideration* for this themed show ***Water, Water Everywhere*** to be exhibited at Glenview Mansion Art Gallery.

From the tiniest drop falling from the sky to a babbling brook, a meandering stream or river, a gushing waterfall, a quiet pond, a marsh, glassy lake, or the deep blue sea. Calm and inviting, or stormy and dramatic. A waterscape with or without creatures or vessels. A puddle, a fountain in a park or even tabletop, a still life, in a glass or vase sustaining a few sprigs or a lovely bouquet. We are looking for your original interpretations of this extraordinary substance that we cannot live without.

Help us make some waves and fill the gallery with your cool creations of water features this summer!

This themed show is sponsored by the City of Rockville Arts Division and the Rockville Art League and will follow the *RAL Juried Members' Spring Show*.

We are honored to have Therese Capal award prizes of recognition.

Original artwork only may be submitted in the following mediums only:

- oils/acrylics
- watercolors
- drawings, pastels, hand-pulled prints
- mixed media, collage, experimental
- photography
- sculpture
- *Note:* the work for this show may have been exhibited in a prior show and acceptance in this show does not preclude its entry in a future show.

Deadline:

Each member may submit up to three (3) pieces for consideration:

May 1 – May 29

IMPORTANT! Please read the Show Agreement: by submitting work into this show, you agree to the terms listed in the show agreement listed here:

“I agree to the rules of the show as presented in this show call and the schedule below, and that my entries are my original works. I will not hold the Rockville Art League (RAL), Glenview Mansion, or the City of Rockville responsible for any possible loss or damage to my entries. As with any show, I understand that all reasonable care will be taken in the handling of my artwork. I give RAL, Glenview Mansion, and the City of Rockville permission to use images of my artwork and publish them as appropriate. I acknowledge a commitment to donate 20% of the sale price of my work, if sold during this show at Glenview to the City of Rockville.”

All two-dimensional (2-D) pieces will need to be framed, gallery-wrapped or professionally finished, securely wired, ready for hanging with the **maximum measurement** of any framed side of **48 inches**. If submitting unframed work, the edges should be painted or finished. **NO wet paint**. Entries not meeting the show conditions will not be accepted. RAL retains the right to determine the suitability of the work for entry in this show.

HOW TO ENTER:

To submit work, please use ***your same personal link and password*** that was sent to you by Patrick Sieg when you renewed this year. Entries accepted May 1 – May 29.

When you submit work, you will need to complete the following for each of your pieces (*up to 3 entries only*):

- **Title**
- **Medium**
- **Price** (*not wholesale!*) (If Not for Sale, please leave blank and we will confirm with you)
- **A clear image** (jpg.) of your artwork (no glare, no frame, no reflection, no furniture, etc.)
- **Dimensions** (*note: depth is for sculpture only*). If entering 2-D work, height, and width ONLY. Do not fill out “depth” unless you are entering sculpture or ceramics.
- Description is optional; date is optional (do not check circa).

Note: When you submit work, *if you entered artwork in the RAL Shows in this past year*, you will still see the images of those pieces. They are marked internally for those shows within the system. By entering work May 1 – May 29, those pieces will be marked internally for the *Water, Water Everywhere* Show.

Schedule:

Exhibition Dates: June 30 – August 30

Entries accepted: May 1 – May 29

Wednesday, May 29: deadline for all submissions.

Friday, June 7: notification of acceptances sent out to all members and posted on RAL website.

TUESDAY, June 25: drop-off artwork at Glenview Mansion, **10:00am-1:00pm**. (same date/time as pick up of *RAL Juried Members’ Spring Show*)

SUNDAY, June 30: “Meet the Artists” opening at Glenview. 1:30-3:30pm. Awards at 2pm.

TUESDAY, Sept. 3: pick up of artwork 10:00am-1:00pm.

This show will be exhibited in person at Glenview Mansion (located at the Rockville Civic Center Park/603 Edmonston Dr.) Additionally, the virtual show will be available to view on the Rockville Art League website and sent to all members to share.

We look forward to seeing your creations.

Deadline for submissions: Wednesday, May 29

As always, if you need help, please ask *ahead of the deadline*.

NOTE: please be aware that the time between the notifications and the delivery of artwork is brief - approximately 2 weeks - so please be sure any work entered will be ready for display by the drop off date.

Questions or need help, contact:

Lisa Sieg: jshows@rockvilleartleague.org

Patrick Sieg: president@rockvilleartleague.org

Glenview Mansion Art Gallery Exhibitions

Glenview Mansion Art Gallery is located at 603 Edmonston Dr. at the Rockville Civic Center. Open weekdays, **Monday – Friday**, 9:00am-4:30pm. Please check the Glenview Mansion website <https://www.rockvillemd.gov/389/Glenview-Mansion> *before* coming out or call 240-314-8681. Plenty of parking and there is an elevator to all levels of the gallery. The gallery is located on the 2nd floor. It is quiet and uncrowded during the week. ***Meet the Artists*** events are free and open to the public. Thank you for supporting the arts and your fellow artists.

Rockville Art League Juried Members' Spring Show

On Exhibit: May 19 – June 21

We are honored to have **Mariana Kastrinakis** as juror. She has had to make difficult decisions in selecting from such a large pool of quality artworks. The notification of accepted artwork has been sent out to members and is posted on the RAL website. Please read the notice carefully for all details, including show agreement, show fee and schedule.

Glenview Mansion Art Gallery

AT ROCKVILLE CIVIC CENTER PARK

Rockville Art League Juried Members' Spring Show



1. *Ikebana Composition*
by Patrick Sieg

2. *Pointers*
by Karen Norman

3. *Color = Life*
by Nancy Jakubowski

4. *Sunburst of Spring*
by Nadine Kim

On Exhibit:
May 19-June 21

On Exhibit:
May 19-June 21

Rockville Art League Juried Members' Spring Show

Meet the artists from **1:30-3:30 p.m.**
Sunday, May 19. Awards will be presented at 2 p.m. that afternoon. Event is free and open to the public.

For information, call 240-314-8681 or 240-314-8660.
For recorded directions, call 240-314-5004. *Glenview Mansion Art Gallery is wheelchair accessible.*

Gallery Hours: Monday-Friday, 9 a.m.-4:30 p.m.; gallery is closed on official city holidays.



Glenview Mansion Art Gallery
at Rockville Civic Center Park
603 Edmonston Drive
Rockville, MD 20851



Rockville Art League

Water, Water Everywhere

On Exhibit: June 30 – August 30

Entries for this themed show will be accepted: **May 1 – May 29.**

To enter, you will need to use your same personal link and password that was sent to you when you renewed or joined to enter work in this show. Please read the show call carefully before entering any work. Pay special attention to the schedule. Members may enter up to three (3) pieces for consideration. Any work that is entered May 1 – May 29 will be marked *internally* for this themed show.

We are honored and delighted to welcome back **Therese Capal** who will assign prizes of recognition for this show.

Help us fill the gallery at Glenview this summer with your cool creations! Please see details in the call for entries in this newsletter.

Virtual Shows, Sales, and Inquiries

Virtual shows are updated and posted to the Rockville Art League website by webmaster Michael Auger. Our *Juried Members' Spring Show* is currently available to view.

How to access the current virtual show and past ones:

Go to <https://rockvilleartleague.org> and click on the button for the current virtual show, *RAL Juried Members' Spring Show*. (If you haven't visited the RAL website lately, you may need to hit refresh.)

Once you open the current virtual show, you can view all the work in the show, or if you prefer to see it by *specific artist*, click on the word "Artists" and, if you would like to view it by category of artwork, click on the word "Rooms". If you are interested in a specific piece, you can click on that artwork. If you would like **to view a past virtual show**, click on the word "Exhibitions" and you will see the show cards from prior shows.

Find the show card of the one you would like to view and click on the name of the show (ex: *RAL Juried Members' Winter Show*, and *Portraits: Creatures Great or Small, or The Colorists*) right below the show card and you can view that show. (Note: RAL's Artwork Archive account has the capacity to store up to 1000 images of artwork; as new shows are uploaded, the works in past shows are no longer viewable. We do retain records with images of work from past shows.)

You can inquire or send a purchase request on the piece on the virtual show. On occasion, we receive inquiries for work in past shows still viewable through our virtual shows. Any inquiries or purchase requests are forwarded to the artist.

How to inquire about or purchase a piece in a Rockville Art League Show on display at Glenview:

If you are in the gallery at Glenview and you are interested in a piece, click on the **QR code** found right on the label below the work. Instructions are also found in the various rooms of the gallery. It's easy. Just **aim your smartphone at the QR code** and click on the link that appears and it will take you to the piece. Once there, you will see the artwork, the medium, dimensions and, if the piece is available, the price. You can click on "Inquire" or "Purchase" if you are interested further. We forward all inquiries or purchase requests to the artist.

If you are at Glenview and forgot your phone or just can't quite figure out a QR code, no worries. Either take a picture of the label or write down the name of the piece and contact either Lisa Sieg

(jshows@rockvilleartleague.org) or Patrick Sieg (president@rockvilleartleague.org). Or go to the RAL website and look for us under contacts.

These shows are beautiful thanks to our talented members.

RAL Speaker Series Presentations Available on YouTube

We offer 6 presentations a year in our *Speaker Series*. Because we meet on zoom, they are recorded and are sent out to members and, also, posted on RAL's YouTube, thanks to Helen Wood. If you have missed any of them, you can access them by going to the Rockville Art League website and scrolling to the very bottom of the page. Once there, click on the small icon to the left of the word YouTube.

On May 4, RAL collaborated with *Art Clinics Online (ACO)* for a *Forum of DC Art Model Collective*. It was a fascinating discussion by four of these artist models in the collective, Jalene, Gazelle, Harry and Sheba. Many of you have painted or drawn them and the rest of us have enjoyed their portrayals throughout the DMV. If you missed this Forum on May 4, you may view the recording by visiting:

<https://www.jjbruns.com/aco-art-model-forum/>

MEMBER NEWS



Paula K. Zeller's oil painting "The Hard Work" was accepted into the 46th Annual Open Painting, Sculpture & Graphics Exhibition at the historic Salmagundi Club in New York City. The show runs from June 3-28.



Two additional oil paintings – “Autumn Light” and “The View” – were juried into the Interiors Exhibition of Calloway Fine Art & Consulting in Georgetown, DC. The show will be exhibited from June 22-July 20. All are invited to the opening reception on June 22, 3-5 p.m.



Lily Kak's painting, "Peeping Crocus" was selected for the Spring Show at Windridge Vineyards in Darnestown during March 13-June 9.

Cindy Rivarde is having an art exhibition in April at the Montpelier Art Center in Laurel, MD. It will be in the Library Gallery. https://www.pgparcs.com/event_list/cynthia-rivarde

The exhibition will be April 7 - June 2. She was selected to exhibit by juror Allison Nance, the Managing Director of the Nicholson Project in DC.



Also, Cindy has four pieces accepted at the Meetinghouse Gallery in Columbia, MD for the show "eARTh: How Sustainable is Your Habitat?" This will run April 20 - July 13 with an Opening Reception on June 9th. 5885 Robert Oliver Place, Columbia, MD 21045.




Discount on Custom Framing


Jae Shin has been working as a professional picture framer for 2 decades at the Framers' Workroom located in Tenleytown, DC. Jae offers 15% off on custom framing jobs for RAL members. Please feel free to contact Jae for any framing jobs. Framers' Workroom, 4431 Wisconsin Ave., NW, Washington DC 20016

202-363-1970. Store hours: Mon-Sat 10:00-5:30. www.FramersWorkroomDC.com


Email: Jaeshin@FramersWorkroomDC.com



The Compass Atelier
Art classes for beginners and experienced artists
Special workshops Study Abroad
Home of the revolutionary Master Artist Program



TheCompassAtelier.com TheCompassAtelier@gmail.com



A Work of Art by Debra Halprin
Giclée Printing and Photography Service
Create Fine Art Prints of your Artwork
on Watercolor Paper or Canvas

Mastering the Fine Art of Giclée Printing

HalprinArt.com
301-910-4750

email: Debra@HalprinArt.com
in Rockville, Maryland

NEWSLETTER SUBMISSIONS

Is your art included in a show? Have other news you wish to share with RAL members? Please send your submissions by the 15th of each month for inclusion in the next newsletter, to: newsletter@rockvilleartleague.org

Glenview Mansion Schedule				
2024				
Exhibition Dates:	ARTISTS	Delivery of Artwork 10am-1pm	Meet the Artists Opening Event	Pick-up Artwork 10am-1pm
May 19-June 21	<i>Rockville Art League Juried Members' Spring Show</i>	TUESDAY, May 14 10:00am-1:00pm	Sunday, May 19 1:30-3:30pm Awards at 2:00pm	TUESDAY, June 25 10:00am-1:00pm
June 30-Sept. 3	RAL Themed Show <i>Water, Water Everywhere</i>	TUESDAY, June 25 10:00am-1:00pm	Sunday, June 30 1:30-3:30pm	TUESDAY, Sept. 3 10:00am-1:00pm

Artists displaying their work in the gallery at Glenview Mansion will be contacted with detailed information about their shows, including the required show agreement. Labels and support to hang the show will be provided. The RAL shows are virtual on our website as well as in person at Glenview.

Meet the Artists opening events are free and open to the public. Plenty of parking and there is an elevator to all levels of the gallery. The art gallery is open weekdays Monday-Friday, 9am-4:30pm. Closed on official city holidays. Please check Glenview Mansion website: <https://www.rockvillemd.gov/389/Glenview-Mansion> or call 240-314-8681 or 240-314-8660 before visiting. Glenview Mansion is located at Rockville Civic Center Park, 603 Edmonston Dr.

Thank you for supporting the arts and your fellow artists!



RAL BOARD OF DIRECTORS

Name	Position	E-mail
Patrick Sieg	<i>President</i>	president@rockvilleartleague.org
Vacant	<i>President Elect</i>	president@rockvilleartleague.org
Lisa Sieg	<i>Vice President/ Exhibits Coordinator</i>	jshows@rockvilleartleague.org
Richard Fisher Sarah Sohraby	<i>Program Coordinators</i>	programs@rockvilleartleague.org
Lisa Sieg	<i>Volunteer Coordinator</i>	volunteer@rockvilleartleague.org
Vacant	<i>Membership Coordinator</i>	membership@rockvilleartleague.org
Rob Gale	<i>Treasurer</i>	treasurer@rockvilleartleague.org
Cathy McDermott	<i>Secretary</i>	secretary@rockvilleartleague.org
Susan Dunnell	<i>Newsletter Editor</i>	newsletter@rockvilleartleague.org
Liliane Blom	<i>Liaison Officer</i>	liaison@rockvilleartleague.org
Dave Allen	<i>Publicity/marketing</i>	publicity@rockvilleartleague.org
Helen Wood	<i>Communications</i>	communications@rockvilleartleague.org
Vacant	<i>Hospitality</i>	hospitality@rockvilleartleague.org
Diane Jeang	<i>Member Shows</i>	mshows@rockvilleartleague.org
Michael Auger	<i>Webmaster</i>	webmaster@rockvilleartleague.org
Eileen Mader	<i>Founder</i>	

Rockville Art League
P.O. Box 4026
Rockville, MD 20850

