



RockvilleArtLeague.org Vol. XXXIV No. 7 March 2025

**Next Meeting: Thursday, March 13, 7PM
Master Watercolor Artist Karen Norman**

Message from the President, Patrick Sieg

Dear Rockville Art League artists,

Albert Camus had a quote that I feel is relevant right now...

“In the depth of winter, I finally learned that there was in me an invincible summer.”

I sometimes feel like we have been through the entire depth of winter in just this last month. Cold snow, dramatic politics, weird weather events and I am right now (but hopefully, only temporarily) suffering from “Snow Shovel Shoulder.” That is not an official malady but real to me.

And the signs of warmer and happier times are certainly ahead and unmistakable. Remember that snow can be exhilarating if you dress accordingly, take a break from shoveling (or don't start at all) and make time to notice the beauty.

We have lots going on these next several months and I am confident that all members will find something in the Rockville Art Leagues offerings that brings joy and enrichment...

- Master watercolor artist and educator Karen Norman will be sharing her art and perspective in our next monthly Zoom (on March 6 at 7 pm). Karen is also a member of RAL and has won Best In Show in several of our juried shows including our winter 24/25 show. I can't wait to hear from her.
- A beautiful display by the Takoma Watercolor Group will be on display in the Glenview Mansion Art Gallery February 23rd through March 21st. The members of this group are all members of the Rockville Art League, and their work is accomplished and beautiful.
- Artist and educator Renee Sandell returns to the Rockville Art League in April with a Visual Fitness Workout with the theme “Unity, Freedom and Our Lives.” Her talk will use Norman Rockwell's painting “The Golden Rule” as a study aid. I can't think of a more appropriate theme for these times.
- Covered later in the newsletter is information about our upcoming and much anticipated Spring Members' Juried Show. Therese Capal will return to the Rockville Art League as our spring judge. Therese is a most thoughtful judge, and we so much appreciated her comments on several past theme shows.

Speaking of art and joy...

Lisa Sieg and I were hanging a small art show in the Maplewood retirement community last week. The show was comprised of several RAL members and staging this show was very much in support of the RAL mission to support arts in our community.

Lisa's note below describes an interaction with one of the residents as we were hanging the show:

“One woman had just moved in last week and told us that she has had an oil painting that her husband gave her when they were first married. At first, we thought she was going to suggest that we include it in the show (something heard when hanging other shows) but, instead, she had a very nice story to share. After moving into their first home together many years ago, she had spotted a painting in an art gallery that she loved. Her husband, the practical one, insisted that other needs were more important given their limited resources, items such as curtains, cookware and furniture. But she had fallen so in love with this painting that she decided to purchase it.

When she returned to the gallery she discovered, much to her dismay, that the painting had been sold. The rest of this story... her husband had bought it as a house-warming gift, and she has cherished it ever since.

He is no longer with her, but his love and generous spirit live on in that painting.”

We were so lucky to have been invited to show artwork at Maplewood, to meet senior art lovers (some of whom are artists as well) and to have heard this story.

I am proud of the creativity and contributions to beauty that our artist members have made in this last year and always. Your work is inspiring to me and I much value our art league.

Thank you all for supporting our group and I can't wait to see you soon at a “Meet the Artists” event or via Zoom.

Finally, some additional quotes...

- “Winter is in my head, but eternal spring is in my heart.” Victor Hugo
- “People don't notice whether it is winter or summer when they're happy.” Anton Chekhov

Sincerely,

Patrick Sieg

President, Rockville Art League.

Rockville Art League Speaker Series

The presentations this fall will continue to be on Zoom. Invitations will be sent out a few days prior and also posted on the Rockville Art League website.

The presentations this winter/spring will continue to be on Zoom. Invitations will be sent out a few days prior and also posted on the Rockville Art League website.

February 6, Sondra N. Arkin on *Collaborations and Community – Many Hands Make Light Work*

Thank you to those joining us Feb. 6 to hear Washington DC artist Sondra N. Arkin discuss her prolific art installations. Her fascinating work explores space, connections, and boundaries in both paintings and

sculpture. In paintings, prints, and drawings, the luminous surfaces, imbued with atmosphere, explore the same points of connection of her ethereal orbs of steel that are organized in site-specific installations. While not overtly representational, the work explores thematic content related to human-nature interactions, often highlighting what viewers might overlook. Her most recent collaborative project, *The Human Flood*, with Ellyn Weiss, uses a variety of media to explore human migration underway due to acute and chronic climate-related changes to environments. For more information about Sondra N. Arkin, please visit: <https://www.sondranarkin.com>

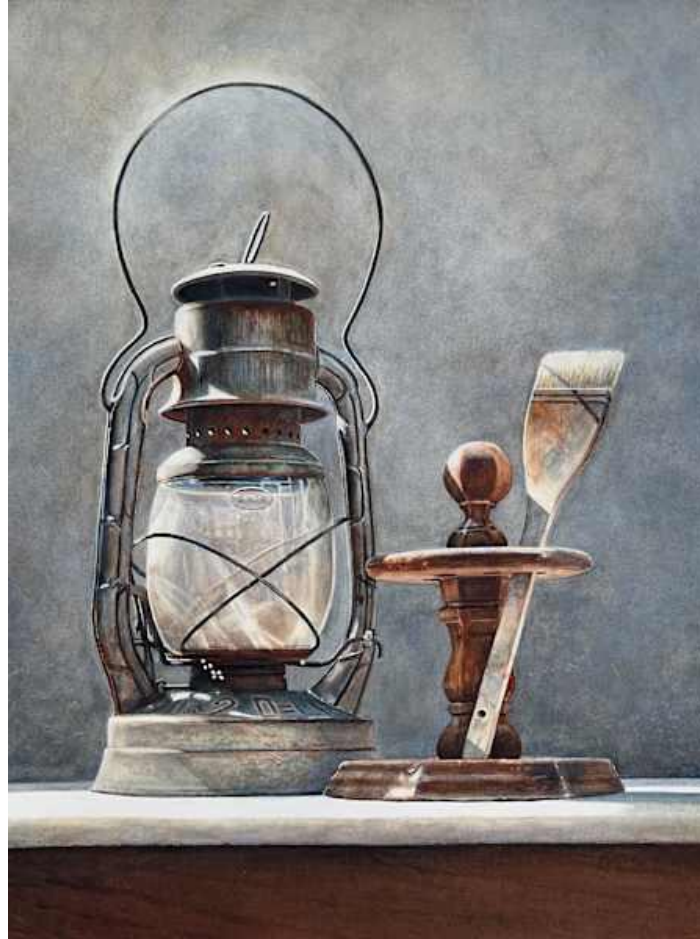
A BIG THANK YOU to Sondra Arkin for sharing not only her time but her ideas for variations on collaborations. It was a great evening. For more information about Sondra Arkin, please visit: <https://www.sondranarkin.com>



Thursday, March 13, 7:00 pm Master Watercolor Artist Karen Norman on *Watercolor, A Tour de Force* and Demo

We are delighted and honored to have Karen Norman present to our members on *Watercolor, A Tour de Force*. She will share her Creative Process which she believes is wrapped up in practicing as often as possible, preferably daily. It will be followed by a demo and, if any members would like to paint along, a few watercolors, a couple of brushes, small sheets of watercolor paper and a container of water are all that is needed! And of course, for those who prefer to listen, it will be a fascinating evening. Please mark your calendars and plan to join in “in real time”.

About the artist: Karen Norman grew up with art all around her. Her mom, Barbara Murdock Brown, was a prolific impressionistic oil painter who was highly collected on the east coast. Karen's knowledge of color and appreciation for the world around her grew from watching her mom paint and appreciating the beauty in the world around us.



Karen graduated in studio art and went on to receive her MFA at the University of Maryland in College Park in color lithography. After graduate school, Karen began to explore watercolor and became fascinated and captivated by its subtleties and possibilities. Her award-winning paintings have earned her signature membership in the National Watercolor Society, Baltimore Watercolor Society and Potomac Valley Watercolorists. She is past president of the Olney Art Association, where her mother was a founding member. She illustrated two textbooks that her husband wrote as a psychology professor at the University of Maryland. For more information and to see sample of Karen Norman's work, please visit <https://karennorman.net>

Thursday, April 3, 7:00 pm, Dr. Renee Sandell: *Visual Workout: on Unity, Freedom and Our Lives!*

Lisa Denison's Remarks for RAL Winter Garden Show

Thank you to the Rockville Art League for the invitation to judge this exceptional show of artwork. I am honored and dazzled by the scope and range of work I have seen in this exhibit.

Congratulations to all of you who are in this show. There was a very large submission turnout, so you should all be very proud to be part of this beautiful *Winter Garden* exhibit.

It's funny how the timing of judging this show aligned with the first "snow day" of the year. I started viewing the "Winter Garden" themed exhibition on my laptop from the confines of a "Winter Garden" reality at home which was the ideal setting on a snowy winter's day. What a perfect way to spend the day and night viewing a significant quantity of well executed artwork over and over again! I began as I have done before by gathering images that immediately struck me. Additionally, I observed any connections of how the artists chose to represent a "Winter Garden" theme.

Every judge has a personal and unique reaction to artwork that generates a connection. There is no way around that, and it comes down to a subjective sorting through of artwork. I feel that it is important to articulate this as well as define what I was looking for in this daunting task.

There is a quote by Robert Henri I had read in *The Art Spirit* that was a basis for many of the pieces I chose: "**Paint the flying spirit of the bird rather than its feathers.**" ~ **Robert Henri**

When I look at art, I sense what movements or energy created it, and from that I connect to an intention or feeling. In connecting with a piece of art, the subject matter is equally important for me as the skill involved in creating it, if not more important, because what I am looking at represents the mind of the artist. I chose pieces that I felt an initial connection with as an observer and then began to analyze what sparked the connection, and what decisions the artist made. I view artwork as a thought that has been captured. In doing so, I began connecting with subject matter, that I felt was a unique fingerprint of the artist's thoughts. Mastery of medium, creative content, quality of light, element of mystery, compositional intrigue, all matter when judging artwork. However, after studying the same images many times over it became more about trying to see through the artwork and into the spirit of the art and the artist.

I was most drawn to pieces that I felt had life in them or some may call it 'heart'. The images that took me somewhere, resonated with me, made me study them closer and want to know more about the artist whose mind and hands gave physical representation to their thoughts. I studied relationships of the subject matter in the paintings to the whole and looked for pieces that I felt had a sense of harmony. Perhaps it is my affinity for narrative art that ignites a curiosity that indulges me and connects me to a work of art.

During Covid when my entire world was on Zoom, and I had been on calls with other artists who I saw on a weekly basis for over a year. One of the artists, Beth, was so lively, and larger than life on the screen. When we finally met for the first time in person, I was looking all around the room to find her and say hello. My eyes were looking upward searching for this tall, vivacious, funny, powerful voice.

Finally, I asked around “Is Beth here?” When I was directed towards her, I was stunned. She was probably the tiniest person in the room. I had expected a six-foot tall woman! The same sort of thing can happen with art. Capturing spirit in a work of art knows no size, no amount of technical mastery, it is an undefinable energy, the manifestation of mind and heart. Lastly, for this exact reason, I believe seeing the art in person played the final role in the decisions I made.

Winter Garden Awards Commentary by Lisa Denison

David Allen
Headwaters in Winter
First Place



This oil painting is a symphony of brushstrokes that are energetic and economical at the same time. The movement of the water pulls us through the stillness of the winter landscape. The winter sky with its soft peaches against cool greys is perfection. There are moments where the corals and greys in the sky sneak into the landscape. There is a gestalt to this painting, a cohesiveness that binds it. It has a Plein air quality and feels as though it goes on forever. The mark making is so utterly deliberate and uninhibited. There are brushstrokes that inspire a sense of vigor and direction. There is no hesitation or questioning by the painter here, just the joy of expressing something beautiful.

This artist did not capture a landscape. The landscape captured the artist. This is what Robert Henri was referring to in his quote: “Paint the flying spirit of the bird rather than it’s feathers” We don’t need to see every branch, every blade of grass, every rock, every ripple in the water. The artist has painted the spirit of this place and that is what held me here.

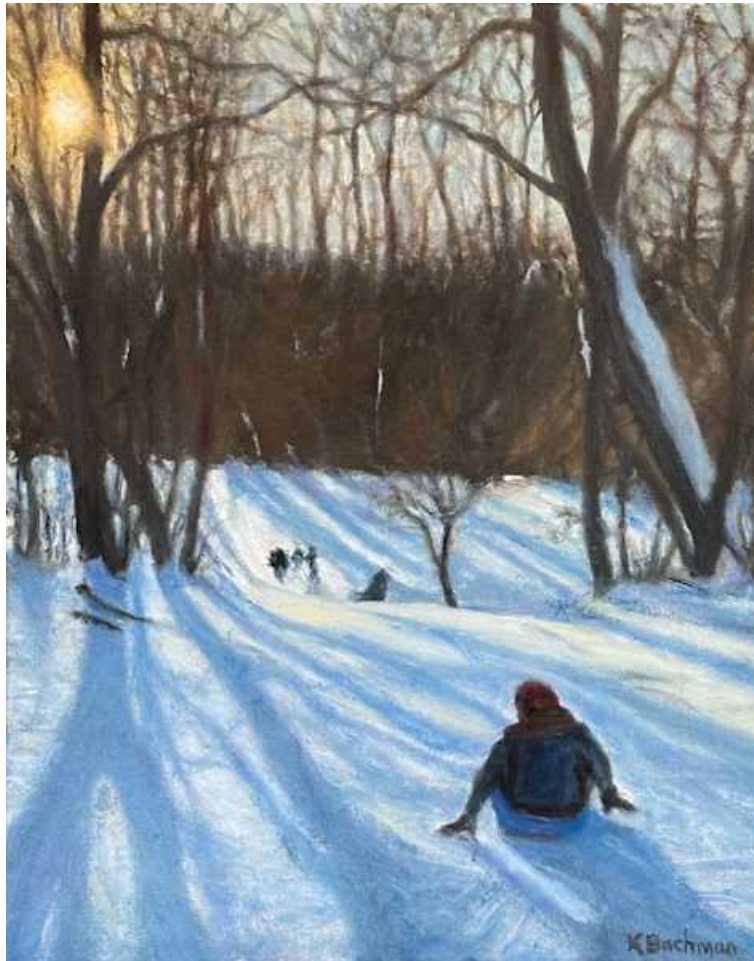
Patrick Sieg
Ikebana Composition
2nd Place



There were so many wonderful still life paintings, but this oil painting kept me very busy. The green wall was the magnet that immediately pulled me in. I suppose my weakness for narrative art instinctively kicked in. I do not know much about Ikebana other than it is a Japanese art of flower arranging that involves a lot of symbolism. I first noticed the repetition of shapes and surfaces, two glass objects, and two painted ceramic objects. The glass pitcher has an array of colorful florals while the vase has tall neutral branches. Compositionally, the branches act as a bridge between the green on the right side and the muted mauve neutrals on the left. The flowers and round glass have an anthropomorphic feminine quality while the tall vase seems more masculine. Perhaps there are two people represented in this painting. However, the figure in the back adds a sense of intrigue, a third element. This painting is not moving, yet I find myself moving. You know what makes a good composition? It is when the composition controls the observer. This is what I found happening to me. There is an arrangement and sense of order to this painting that is controlling how I view it. Whether or not the artists intent, there is

a sense I get having to do with family here. It feels as though I am being welcomed in. Interiors often leave us to imagine what time of day or night it is. I find it quite believable that I am entering a warm, welcoming home on a cold day, being greeted by two welcoming souls and offered a cup of tea or possibly a cocktail!

Ken Bachman
Sledding Hill
3rd Place



This oil painting wowed me with the sunlight breaking through the tree branches and creating that familiar fire like glow. The long diagonal cold blue tree shadows pulled me to the figure at the top. I saw the familiar marks in the snow that are made when trying to push off to get started down the hill. The position of the mittens along with the soft edges around the figure made me feel the snow. The blurred figures in the distance are fantastic. Painting four figures in motion with snow flying around them with only a few brushstrokes is remarkable. When the viewers' eyes finish the image and turn brushstrokes into people, it is the work of a highly skilled painter. Albeit, what moved me the most about this painting was that it had heart. It is alive. It has voices squealing and echoing through the winter stillness, the evidence of humans making their marks in a blanket of snow, gave it a heartbeat.

Angela Lacey

Let it snow!

3rd Place (tied for 3rd)



This watercolor painting made me smile. It has so much happiness and festivity in it that it should come with its own music playlist. There is a twinkling and playfulness that takes me somewhere nostalgic. The use of the white paper as snow collecting on the leaves and berries adds just enough frost to feel like it just started snowing and it's sticking! It is easy for painters to go overboard with snow, sand, raindrops in a painting. This is not the case here. When I blur my eyes, the values are so well placed along with the transition from soft to hard edges. The soft orbs of color feel like holiday lights in the distance. There is so much spirit and excitement in this watercolor. It is just delightful!

HONORABLE MENTION:

Susan Moses

Potomac River in the Winter

This watercolor painting is poetry. In fact, it reminds me of a poem by Macrina Wiederkehr titled "The Sacrament of Letting Go". The sense of light is heavenly. In fact, I felt like I had to Squint my eyes as I looked towards the top of the painting. The water reflecting the sky in ripples is stunning. The use of warm ochers and umbers against the icy blues made me take a deep breath. There is a spirit of hidden strength here. The dormant trees still standing strong, waiting patiently for spring as they soak in the sunlight.

Susan Moses

Cedar Wax Wing

I immediately felt the chill in the air when I saw this watercolor painting. The branches break up the space so well, and the watercolor sky is whispering winter. The handling of the birds tells me the artist knows nature well. The warm muted yellow and amber hues in the feathers are a lovely balance to the

cold sky. The berries dangling give some weight to the branches. The artist has somehow managed to paint stillness in conjunction with fleeting time, as the birds are about to take flight any minute.

Sandy Yagel

Daisy Bouquet

This watercolor is a real beauty. I love iconic compositions. The gorgeous blue glass bottle is so realistic and just amazing technical ability is on display here. The daisy bouquet squeezed into the glass bottle creates a lovely shape against the deep purple backdrop. The use of purple in the background and foreground is brilliant as it allows the daisies and the glass bottle to be the stars of the show. My eyes move back and forth from the brilliant blue glass to the crisp bouquet of daisies and then study the stems inside the glass. The desaturated green stems also appear to be in water as the edges are softer. So many lovely details in this one.

Robert Walter

Late Summer Flower Mix - Soft Pastel on Sanded Paper

The Cezanne like energy of this piece captivated me. I love the deliberate mark making, and the handling of space in this composition. The diagonals and geometric divisions of space juxtapose the flower arrangement. There is a “just do it” sensibility here, no second thoughts. This is what grabbed my attention. I also love the way the background was handled.

I sense a very no-nonsense spirit in the hand of the artist, that gives this such freshness.

Sarah Clayton Davis

Bright Window - Oil on linen

There is a lovely sense of peace in this painting. The dark pot balances the light coming through the window as well as the beautifully backlit leaves of the plant. The warmth of the light is felt on the windowsill and the very subtle brushstrokes on the rim of the pot along with some unexpected color placement. What I love about this painting is the meditative quality of it. There is an organic elegance in artist’s handling of the plant, a careful eye.

Lily Kak

Dazzling Daisies - Watercolor collage

This is one of the smaller pieces in the show, yet it has so much to see. This is one of those pieces that hits you completely differently in person because you can see the texture and the layers of work, energy. There are beautiful soft edges with muted colors, contrasted with sharp stark white petals. What really moved me was the placement of the pieces. Whether the artists intention or not, there is a feeling of flowers that have been discarded or strewn on a surface possibly near a stream or a wooded area. There is a spirit of caring that comes through, along with a possible story to tell here.

Stephanie Banks

Pretty in Pink

This photo has such a punch! The over saturated pink petals are dead center in this composition, and it works wonderfully! The intense fuchsia petals surrounded by wax paper like film, and steamy goeey green blurs transcend this photo into a painting. I tried to figure it out so many times, and then I had to just let go and enjoy the movement surrounding the intense super pink flower. This photograph carries with it a spirit of curiosity, experimentation, and playfulness that is just so enjoyable.

Beth Stinson

Winterberry - Watercolor, ink, and dye

I gasped when I first saw this on my computer. There is an ethereal quality to this masterpiece. The artist has captured softness and strength, permanence and impermanence, the fragility of nature. This is one of those pieces that will be something unique to each individual viewing it. I saw moonlight and the skeletal framework of leaves fading away while others held tight. The berries look like jewels sprinkled about and floating in a night sky. The mystery and magic of this watercolor held me captive for quite some time.

Debbie Cohen

Radiant Bloom

This oil painting was hiding from me. I had walked past it many times thinking how well the medium was technically handled. Several passes later, I knelt down to get a closer look, and I found myself thinking of the scene in the Wizard of Oz with the Poppies. There is a beautiful quality of light to this, and it is captured in a single bloom. Poppies bloom in late spring, a time when nature is renewing itself. The artist has captured that feeling of living vibrantly. The blurred warm orbs behind the flower lead the eye to the petals and then into the dark seed pod. There is a sense of zest for life here that moved me.

Beth Stinson

Touch of Frost - Watercolor ink and dye

I was mesmerized by this beautiful image. It has a dreaminess to it, as well as a glass-like quality. I sense the artist has the spirit of an alchemist, creating and experimenting to compose a beautiful place in another world. The deep inkiness creates a mysterious abyss beneath the surface while the intricacy of nature is on full display. The use of color in the fern is just beautiful.

Patricia Swan Jacobs

Winter Glow - Soft Pastel on Sanded Paper

I discovered this pastel after walking past it several times. Something made me stop. There is temperature, texture, and a beautiful light in it. The artist captured the remnants of a season past. There is a familiar softness to the dried tufts and a beautiful golden light that warms the crisp air. The hand of the artist mimics the dark sharp prickly parts as well as the softness in the wheat stalk tips. This feels like a place one might drive by, staring out of a car window, a fleeting glimpse on a cold day.

RAL Juried Members' Spring Show

May 19 – June 20

Glenview Mansion Art Gallery

Call for entries: MARCH 1 – MARCH 31 *Online submissions only.*

Juror: We are honored that Therese Capal will jury our ***Juried Members' Spring Show.***

Therese Capal is delighted to have been asked to judge the *RAL Juried Members' Spring Show* for 2025. She has judged several exhibits over the years for RAL's wonderful group of artists and she has no doubt that this upcoming show will include some inspiring work. Originally from the Washington D.C. area, she has been an involved member of the Rockville community for nine years after many uprooted years as part of a military family traveling across the country. She holds degrees

from the University of North Carolina at Chapel Hill in drawing and printmaking and from UMBC in graphic design. She also served on the Rockville Cultural Arts Commission and the Art in Public Places Permanent Works Subcommittee for seven years. Therese Capal is a graphic and 3D designer, illustrator, and artist. Her work has been exhibited in various shows around Washington D.C., out-of-state venues such as the University of Maine and the Center for Contemporary Printmaking in Connecticut and several traveling and international exhibits. She looks forward to once again working with this exciting community of artists.

On Exhibit: This juried show will be on display in person from **May 19 through June 20** at Glenview Mansion Art Gallery (603 Edmonston Dr./Rockville) with the virtual show available on our website. Therese Capal will award prizes on **Sunday, June 1, 2:00 pm at the Opening.**

Please read all the information below carefully before entering.

Call Deadline: *Members in good standing* may submit up to **two (2) pieces** of work to be considered by the judge for inclusion in this show **beginning MARCH 1** through **MONDAY, MARCH 31**. No submissions will be accepted prior or after the deadline.

Please send in your best work that has not been accepted in a previous RAL Juried Members' show to be considered by the judge. This is not a themed show. The word spring merely indicates the time of year.

If your work is accepted into this show, you will be informed **by Tuesday, April 15** with delivery of artwork on **MONDAY, May 12**.

Entry Fee: A flat **\$10 show fee** will be collected from artists **that have their work accepted into this show** (not per piece).

IMPORTANT! By submitting work into this show, you are agreeing to the terms of the **Show Agreement** listed here: "I agree to the rules of the show as presented in this show call and the schedule below, that my entries are my original works and have not been accepted into a previous **Rockville Art League Juried Members' Show**. I will not hold the Rockville Art League (RAL), Glenview Mansion, or the City of Rockville responsible for any possible loss or damage to my entries. As with any show, I understand that all reasonable care will be taken in the handling of my artwork. I give RAL, Glenview Mansion, and the City of Rockville permission to use images of my artwork and publish them as appropriate. I acknowledge a commitment to donate 20% of the sale price of my work, if sold during this show at Glenview to the City of Rockville."

Eligibility and rules: The following rules apply for all works entered.

- Each *member in good standing* may enter **up to two (2) pieces by the deadline**.
- **How to enter:** **submit your entries using your PERSONAL LINK and PASSWORD** that was emailed to you by Patrick Sieg when you joined or renewed this membership year. Entries of **up to 2 pieces per artist for consideration** by the judge may be submitted by **Monday, March 31**.
- **For each submission**, you will be required to include: the **title, medium, dimensions**, (Note: Depth is for sculpture only) and **market price** (NOT wholesale price!), (If it is *Not for Sale*, please leave blank) and **submit an image** (jpeg or jpg.) of your piece. The mat or the frame (or glass, glare, wall, furniture etc.) should NOT be visible in the image you

submit. Just the artwork itself. **NOTE:** the date is NOT required, and we kindly ask that you DO NOT CHECK “circa”. A description is optional.

- **If your work is accepted into this show:** a \$10 show fee per artist (not per piece) will be collected at that time.
- RAL retains the right to determine suitability of work for entry in this show.

Artwork requirements: If your work is accepted into this show, *each 2-D piece must be ready for hanging*, gallery-wrapped or framed or professionally finished, **securely wired** by May 12.

- The maximum measurement of any framed side is **48 inches**.
- Only **original** works **framed securely with hanging wire** are acceptable. (NO sawtooth hangers or such.) If submitting unframed canvas, edges should be painted or finished.
- **NO WET PAINT** is allowed.
- The **entries may NOT have been exhibited** in a previous *RAL Juried Members’ Show*.
- All artists are encouraged to sign their work on either the front or back.
- Entries not meeting the show conditions will not be accepted.
- All work must remain up until the end of the show.
- **Sales:** If any work sells while on display at Glenview, the artist agrees to donate 20% of the sales price to the City of Rockville as specified in the *Show Agreement* above.

Categories of Artwork Include:

- Oils and acrylics
- Watercolors
- Pastels, drawings, and hand-pulled prints
- Mixed media, collage, experimental, and original computer-generated art
- Photographs
- Sculpture and ceramics

Awards:

- Best in Show (cash prize)
- First, Second, Third in all six categories (cash prizes)
- Honorable Mention at Judge’s Discretion

Schedule: Please check your calendar to make sure you (or your designee) can deliver and pick up your artwork on the designated dates prior to entering.

- **March 1 – March 31** - you may enter up to two (2) pieces for consideration online using the your personal link and password. Up to two (2) pieces per artist.
- **Monday, March 31** – **Deadline for submissions**
- **Tuesday, April 15** – notifications of acceptances sent out to all members by this date. A show fee of \$10 (per artist) will be collected from those whose work is accepted into the show at that time.
- **MONDAY, May 12**– *delivery of accepted artwork* at Glenview, **10:30am-1:00pm**; if your work is accepted into this show, you or your designee must deliver your work during this time. The judge will award prizes based on an in-person view.

- **Sunday, JUNE 1**, 1:30-3:30pm, *Meet the Artists Opening* at Glenview Mansion. Therese Capal will **award prizes at 2:00pm** with remarks about the work. She will also be available to talk with artists.
- **After the awards:** A prerecorded zoom video of the judge discussing her awards choices will be sent out to all members.
- **MONDAY, June 23 - pick up artwork** 10:00am-1:00pm. You or your designee must pick up your work on this date.

Please note: *Members in good standing** have been sent their **personal link and password** when they joined or renewed this membership year. **PLEASE USE IT** to enter this show and any others through Aug. 31. It is the same link and password you used to enter *RAL Juried Members' Winter Show* and/or *Winter Garden Show*.

**If you paid your dues for Sept. 1, 2024 – Aug. 31, 2025, you are a member in good standing.*
PLEASE: *if you are unsure of your membership status, ask us!*

You will use your **personal link/password** to enter your work in the show. Be sure to type in the information specified in this note carefully and clearly.

This information will be used to contact you and to create the virtual show and the labels. Please be sure to check that your email is listed correctly and be sure to check it on a regular basis.

Note: When you submit work, *if you entered artwork in the past several RAL Shows*, you may see the images of those pieces. They are marked appropriately for those shows within the system.

If you need help, **please ask ahead of the deadline!**

You may enter work for this show March 1 through March 31.

Deadline for all entries is **MONDAY, MARCH 31.**

Notifications of acceptances will be sent out to all members and posted on the website **by Tuesday, April 15.** This call for entries will be also posted on the Rockville Art League website. All accepted work must be **exhibition ready by Monday, May 12.**

Questions regarding the show? Need help or support with the entry process? Ask ahead of the deadline.

Please contact:

Lisa Sieg: jshows@rockvilleartleague.org

Patrick Sieg: president@rockvilleartleague.org

Glenview Mansion Art Gallery Exhibitions

Glenview Mansion Art Gallery is located at 603 Edmonston Dr. at the Rockville Civic Center. Open weekdays, Monday – Friday, 9:00am-4:30pm. Please check the Glenview Mansion website <https://www.rockvillemd.gov/389/Glenview-Mansion> before coming out or call 240-314-8681. There is plenty of parking and an elevator to all levels of the gallery. The gallery is located on the 2nd floor. It is quiet and uncrowded during the week. *Meet the Artists* events are free and open to the public. Thank you for supporting the arts and your fellow artists.

Rockville Art League

Winter Garden

On Exhibit: January 26 – February 14

We thank the artists in this show for offering their unique creations of botanicals that transformed the gallery at Glenview Mansion into a *Winter Garden*.

Also, on display in the gallery was the Rockville Student Juried Art Show. Thank you to everyone who joined us on **Sunday, Jan. 26** for the opening and supported all the artists in the show. We were honored to have Betty Wisda from the City of Rockville’s Art Division present the student certificates and to have Lisa Denison judge the show. Please see her judge’s remarks and awards selection in this newsletter. Congratulations to those receiving awards!

Artwork pick up is on **Tuesday, Feb. 18, 10:00am-1:00pm.**

Glenview Mansion Art Gallery Exhibit:

Takoma Watercolor Group

Pathways: A Journey Through Watercolor

On Exhibit: February 23 – March 21

Barbara Bell, Jim Burks, David Daniels, Monika Griff, Margo Kabel, Diane Rudzinski, Jane Salomon, and Michael Shibley present the multifaceted nature of watercolor painting as a medium for both expression and exploration. The exhibit showcases a diverse array of watercolor influenced artworks, demonstrating how pathways, literal and metaphorical, intertwine, connected by the unpredictability of vibrancy of watercolors. The theme *Pathways* encapsulates the journey of both the artists and the viewer. Pathways can represent physical trails in nature, urban landscapes, emotional journeys, and spiritual quests. Watercolor both mirrors and inspires new pathways, inviting viewers to see the world through the unique lens of each artist.

Meet the artists at the **Opening on Sunday, Feb. 23, 1:30-3:30pm.** Everyone is welcome. These artists are also RAL members, and the virtual version of their show will be available on the RAL website.

TAKOMA WATERCOLOR GROUP
Pathways: A Journey Through Watercolor

Glenview Mansion
Art Gallery
AT ROCKVILLE CIVIC CENTER PARK

ON EXHIBIT: FEB. 23-MARCH 21

1. **Geranium Window**
by David Daniels
2. **Hudson Valley**
by Monika Griff
3. **Mountain Fire and Water**
by Margo Kabel
4. **Fall Foliage**
by Jane Salomon

On Exhibit:
Feb. 23-March 21

**TAKOMA
WATERCOLOR GROUP**

Pathways: A Journey Through Watercolor

Meet the artists from 1:30-3:30 p.m. Sunday, Feb. 23.

Event is free and open to the public.

Barbara Bell, Jim Burks, David Daniels, Monika Griff, Margo Kabel, Diane Rudzinski, Jane Salomon and Michael Shibley present the multifaceted nature of watercolor painting as a medium for both expression and exploration through the theme of pathways.

For information, call 240-314-8681 or 240-314-8660.

For recorded directions, call 240-314-5004. *Glenview*

Mansion Art Gallery is wheelchair accessible.

Gallery Hours: Monday-Friday, 9 a.m.-4:30 p.m.;
gallery is closed on official city holidays.



**Glenview Mansion
Art Gallery**
at Rockville Civic Center Park
603 Edmonston Drive
Rockville, MD 20851



**Glenview Mansion Art Gallery Exhibit:
North Bethesda Camera Club
The Arts All Around Us
On Exhibit: **March 30 – May 9****

**Rockville Art League
Juried Members' Spring Show
On Exhibit: **May 19 – June 20****

Entries for this show will be accepted: **March 1 – 31** only. Please see the call for entries in this newsletter.

Virtual Shows, Sales, and Inquiries

Virtual shows are updated and posted to the Rockville Art League website by webmaster Michael Auger. The **Rockville Art League Juried Members' Winter Show** is currently available to view and soon it will be replaced by the **RAL Winter Garden Show**.

How to access the current virtual show and past ones:

Go to <https://rockvilleartleague.org> and click on the button for the current virtual show, **RAL Winter Garden Show**. (If you haven't visited the RAL website lately, you may need to hit refresh.)

Once you open the current virtual show, you can view all the work in the show, or if you prefer to see it by *specific artist*, click on the word “**Artists**” and, if you would like to view it by category of artwork, click on the word “**Rooms**”. If you are interested in a specific piece, you can click on that artwork. If you would like **to view a different virtual show**, click on the word “**Exhibitions**” and you will see the show cards from prior shows.

Find the show card of the one you would like to view and click on the name of the show (ex: **RAL Juried Members’ Winter Show, RAL Water, Water Everywhere Show, etc.**) right below the show card and you can view that show. (Note: RAL’s Artwork Archive account has the capacity to store up to 1000 images of artwork; as new shows are uploaded, the work in past shows are no longer viewable. We do retain records with images of work from past RAL shows.)

You can inquire or send a purchase request on the piece on the virtual show. On occasion, we receive inquiries for work in past shows still viewable through our virtual shows. Any inquiries or purchase requests are forwarded to the artist.

How to inquire about or purchase a piece in a Rockville Art League Show on display at Glenview:

If you are in the gallery at Glenview and you are interested in a piece, click on the **QR code** found right on the label below the work. Instructions are also found in the various rooms of the gallery. It’s easy. Just **aim your smartphone at the QR code** and *click on the link* that appears, and it will take you to the piece. Once there, you will see the artwork, the medium, dimensions and, if the piece is available, the price. You can click on “Inquire” or “Purchase” if you are interested further. We forward all inquiries or purchase requests to the artist.

If you are at Glenview and forgot your phone or just can’t quite figure out a QR code, no worries. Either take a picture of the label or write down the name of the piece and contact either Lisa Sieg (jshows@rockvilleartleague.org) or Patrick Sieg (president@rockvilleartleague.org). Or go to the RAL website and look for us under contacts.

These shows are beautiful thanks to our talented members.

RAL Speaker Series Presentations Available on YouTube

We offer 6 presentations a year in our *Speaker Series*. Because we meet on zoom, they are recorded and are sent out to members and most of them are posted on RAL’s YouTube, thanks to **Helen Wood**. If you have missed any of them, you can access them by going to the Rockville Art League website and scrolling to the very bottom of the page. Once there, click on the small icon to the left of the word YouTube. You can view the February speaker **Sondra N. Arkin**, Mixed Media Artist and Curator discuss *Collaborations and Community – Many Hands Make Light Work*.

MEMBER NEWS



Linda S. Sherman

Marion L. Griffin

Joan April

Gail Kaplan-Wassell

Older in years but not in heart, four women have had their art blossom in their second or third acts of their adult lives. Although each comes from a different professional background, love of abstract art and strong friendship binds them together.

At FCC's Mary Condon Hodgson Art Gallery *Not Beyond our Expiration Date!*

March 8 - April 9, 2025

March 8, Opening Reception: 5-7 pm



Linda Sherman
301-335-3136



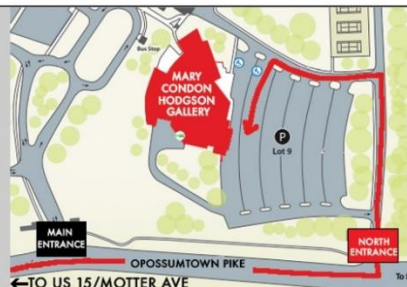
Marion L. Griffin
301-788-3546



Joan April
301-318-6797



Gail Kaplan-Wassell
301-890-1551



THE MARY CONDON HODGSON ART GALLERY
Visual & Performing Arts Center
Frederick Community College

Contact: Wendell Poindexter, 301.846.2513
7932 Opossumtown Pike, Frederick, MD 21702
Gallery Hours: Mon – Thurs, 9:30 – 9:00 pm
Friday, 9:30 – 5:00 pm & Sat, 9:30 – 3:30 pm

From points south:

- Take I270 north
- I270 turns into Route 40
- Route 40 turns into Route 15 N

- Route 15 to Motter Avenue/
Opossumtown Pike
- Continue on Opossumtown Pike
- BYPASS Main entrance of Frederick Community College (traffic light)
- Turn left at NORTH ENTRANCE of FCC at the traffic light
- BYPASS the first entrance to the parking lot
- Take the second entrance to Parking Lot 9



These 11 *Fairweather Artists*, Nancy Arons, Ellen Broadman, Sarah Clayton Davis, Karen Kuell Epstein, Susan Sinclair Galego, Jennifer Howard, Christianne King, Ingrid Matuszewski, Lisa Sieg, Patrick Sieg and Stacy Yochum have created this multimedia show of beautiful vistas, vignettes, and subjects entitled *People Places Things*. Maplewood Park Place is located at 9707 Old Georgetown Road, Bethesda.

The artwork on the flyer is:

Top left to right: *Red, White and Blue* by Sarah Clayton Davis, *Glen Echo Stroll* by Jennifer Howard. Lower left to right: *Inspired by Elaine De Kooning* by Patrick Sieg, *The Fighter* by Susan Sinclair Galego, *The Shopping Trip* by Stacy Yochum, *Happy Days* by Ellen Broadman (the car).



Art Show at Goldman Gallery: “Tell Us A Story”

MAA and the Bender Jewish Community Center (JCC) of Greater Washington are thrilled to co-host an enchanting art exhibition and sale titled “Tell Us A Story.”

At the heart of every exceptional work lies a story waiting to be told. Whether it's a painting, sculpture, photograph, mosaic, or fused glass, artists utilize their creations as vessels for narratives that touch the human spirit. When you think about it, no painting just starts with a subject and ends with a frame. There is so much more to it. There is a circumstance, a purpose, and a process that goes on around and into it. This means that the enjoyment of a work lies not just in the viewing but also in the telling.

Show Dates: February 9 - March 2, 2025

Located at the [Goldman Art Gallery](#), 6125 Montrose Rd., Rockville, Maryland
Please join us in celebrating the artists and their stories as told through their art.

“Tell Us A Story” Art Show

February 9 - March 2, 2025

Meet the Artists: February 9, 12-3pm

At the Goldman Art Gallery, 6125 Montrose Rd, Rockville MD



Coco 1 by Sylvia Douglin **Flow** by Iris Cottin **Wyeth's Ingredients for Success** by Mark Adler **Dreamer 2** by Leonid Bendersky

2025 MAA Show at Oasis Art Gallery

2025 MAA Show. This highly anticipated event will run from January 13 to April 25, 2025, showcasing 65 stunning works of art by the talented artists of the Montgomery Art Association. MAA is delighted to return to the Oasis Art Gallery for the seventh MAA-Oasis collaboration. This year's show promises to be a visual feast, with 65 works of the artists' choice on display.

Mark your calendars and join us for an unforgettable artistic journey. Take advantage of this opportunity to experience the vibrant art scene and support local artists. This amazing showcase is located at Oasis Art Gallery, Westfield Montgomery Mall, 7125 Democracy Blvd., Bethesda, MD 20817

For more information, visit our website: www.oasisnet.org or contact the Oasis Art Gallery.

Artistic Escapes Plein-Air Painting Workshop

Exciting News!

Stephanie Change is thrilled to share that she will be leading an **Artistic Escapes Travel Workshop** in the beautiful city of **Lisbon, Portugal!** Whether you are beginning your artistic journey or an experienced creator, this workshop is your chance to refine your skills, ignite creativity, connect with fellow artists, and be inspired by Lisbon's vibrant charm.

Dates: June 22–29, 2025

Location: Lisbon, Portugal

Bonus Opportunity: You can also receive college credit for this workshop through Monserrat College of Art!

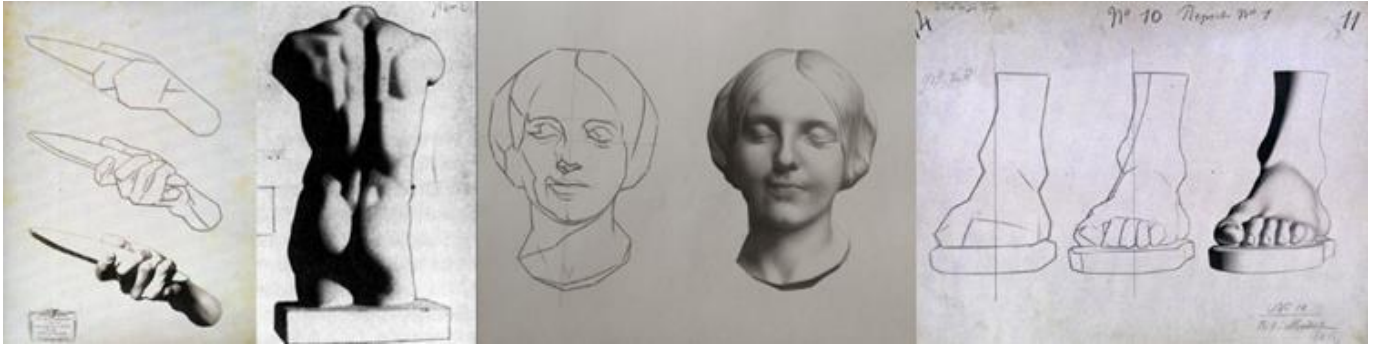
During our time in Lisbon, Stephanie will provide daily painting demonstrations and personalized critiques to help you refine your technique and artistic vision.

We'll sketch and explore some of Lisbon's iconic landmarks, including **Jerónimos Monastery, Belém Tower, Miradouro da Senhora do Monte...**etc. We'll also take a **day trip to Sintra** to visit the magnificent **Pena National Palace**, followed by an excursion to **Setúbal's stunning coastline**, where we'll capture the beauty of the seascape through painting.

For additional artistic inspiration, we'll visit the **Calouste Gulbenkian Museum**, where we'll admire masterpieces by **Rembrandt, Manet, Degas, and Turner**, drawing insight from their timeless techniques and vision.

Don't miss this incredible opportunity to explore art, culture, and connection in one of Europe's most picturesque cities.

Learn more and register: <https://www.stephaniechangart.com/travel-workshops>



Sameer Sharma will teach an eight-week class on how to draw using the time-tested Bargue Method. Classes are every Friday, March 14—May 2, from 10 am until 1 pm. The cost is \$395. For further information, or to register, please visit the link below:

[Compass Art Center — The Bargue Method • Sameer Sharma • Fridays, March 14-May 2 • 10AM-1PM](#)



CALL FOR ART



Earth's Echo
VOICES OF ENVIRONMENTAL JUSTICE

We invite artists to **submit their work** for an upcoming art exhibition addressing community impact and environmental justice. We seek art that explores the intersection of environmental challenges and social inequities, focusing on the human stories behind environmental harm and resilience. This exhibition endeavors to **amplify the voices of those affected by environmental harm and highlight the resilience, struggles, and creativity of impacted communities.**

Eligibility:

- Open to all artists 18 and older currently residing in the DMV area.
- Acceptable mediums include paintings, sculptures, and photography.
- Artwork must be created within the last five years and align with the exhibition's theme.
- Submissions from underrepresented voices, especially those from impacted communities, are strongly encouraged.


SUBMIT YOUR ENTRIES ON OUR WEBSITE BY MARCH 9TH, 2025

Selected artworks will be exhibited at the Shannon and Michael Priddy Library, The Universities at Shady Grove from March – April, 2025.

 **The Universities**
AT SHADY GROVE

Priddy Library

BLDG III, 1st Floor
shadylib@umd.edu | 301-738-6020



LEARN MORE

Earth's Echo: Voices of Environmental Justice

An opportunity for artists based in the District of Columbia, Maryland, and Virginia. This spring, the Priddy Library at The Universities at Shady Grove will host an inspiring new exhibition titled "Earth's Echo: Voices of Environmental Justice". They are inviting artists whose work explores environmental justice themes to submit pieces for consideration. The attached prospectus provides detailed information about the exhibition and submission process. If you are an artist or know someone whose work aligns with this theme, we encourage you to share this invitation widely. Your participation and support will help make this event a meaningful celebration of art and community.

<https://shadygrove.umd.edu/earths-echo>

Questions may be directed to USG-LibraryExhibits@umd.edu

Request for Art Donation to Support Non-Profit Fundraiser

I serve on the Board of Advisors for the non-profit Peace on Patuxent Inc., (POPi), a no-cost respite home and day retreat established for women fighting life-leveling cancers. Their annual fundraiser will be held on Saturday, May 4th, at Gude Mansion in Laurel MD. To help raise essential funds, they are inviting artists to donate a piece of their work to an auction at the event. These works will be featured in the event program, on the POPi website, and through their social media channels.

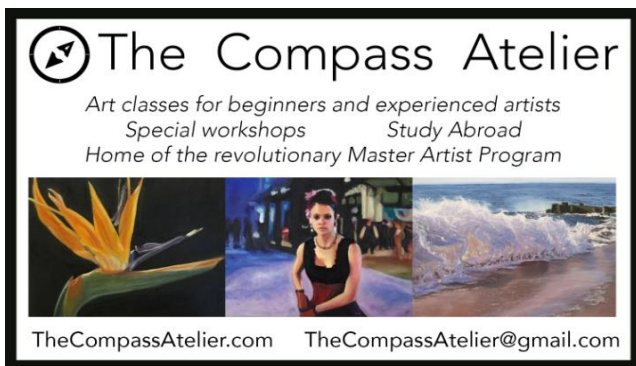
We would like to receive all pledges for art donations before March 15th. Anyone interested in donating should contact us at general.inquiries@peaceonpatuxent.org. We will work with each donor to schedule a drop off or pick up date.

For more information on this worthwhile organization see their website <https://peaceonpatuxent.org>.


Helen Wood
RAL Member

Discount on Custom Framing


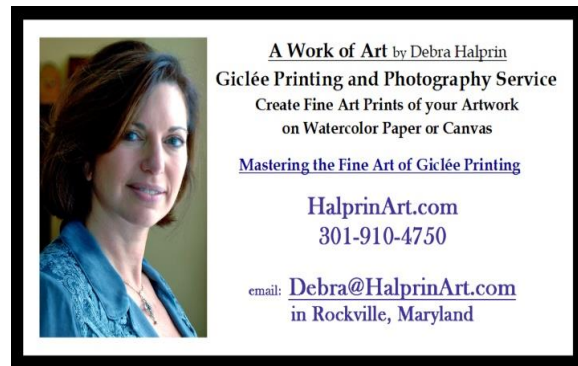
Jae Shin has been working as a professional picture framer for 2 decades at the Framers' Workroom located in Tenleytown, DC. Jae offers 15% off on custom framing jobs for RAL members. Please feel free to contact Jae for any framing jobs. Framers' Workroom, 4431 Wisconsin Ave., NW, Washington DC 20016. 202-363-1970. Store hours: Mon-Sat 10:00-5:30. www.FramersWorkroomDC.com
Email: Jaeshin@FramersWorkroomDC.com



The Compass Atelier
Art classes for beginners and experienced artists
Special workshops Study Abroad
Home of the revolutionary Master Artist Program



TheCompassAtelier.com TheCompassAtelier@gmail.com



A Work of Art by Debra Halprin
Giclée Printing and Photography Service
Create Fine Art Prints of your Artwork
on Watercolor Paper or Canvas
Mastering the Fine Art of Giclée Printing
HalprinArt.com
301-910-4750
email: Debra@HalprinArt.com
in Rockville, Maryland

NEWSLETTER SUBMISSIONS

Is your art included in a show? Have other news you wish to share with RAL members?
Please send your submissions by the 15th of each month for inclusion in the next newsletter, to:
newsletter@rockvilleartleague.org

Glenview Mansion Schedule				
2024 - 2025				
Exhibition Dates:	ARTISTS	Delivery of Artwork	Meet the Artists Opening Event	Pick-up Artwork
Jan. 26 - Feb. 14	RAL <i>Winter Garden</i> and Rockville Student Art Show	TUESDAY, Jan.21 10:00am – 1:00pm	Sunday, Jan. 26 1:30-3:30pm Awards at 2PM	TUESDAY, Feb. 18 10:00am-1:00pm
Feb. 23 -Mar.21	Glenview Mansion Gallery Exhibit <i>Takoma Watercolor Group</i>	TUESDAY, Feb. 18 11:30am – 1:00pm	Sunday, Feb. 23 1:30-3:30pm	MONDAY, March 24 9:00am -10:30am
March 30-May 9	Glenview Mansion Gallery Exhibit <i>North Bethesda Camera Club</i>	MONDAY, March 24 11:00am -1:00pm	Sunday, March 30 1:30-3:30pm	MONDAY, May 12 9:00am -10:30am
May 19-June 20	RAL Juried Members' Spring Show	MONDAY, May 12 10:30am-1:00pm	Sunday, June 1 1:30-3:30pm	MONDAY, June 23 10:00am-1:00pm

Artists displaying work in the gallery at Glenview Mansion will be contacted with detailed information about their shows, including the required show agreement. Labels and support to hang the show will be provided. The RAL shows are virtual on our website as well as in person at Glenview.

Meet the Artists opening events are free and open to the public. There is plenty of parking and an elevator to all levels of the gallery. The art gallery is open weekdays Monday-Friday, 9am-4:30pm. Closed on official city holidays.

Please check Glenview Mansion website: <https://www.rockvillemd.gov/389/Glenview-Mansion> or call 240-314-8681 or 240-314-8660 before visiting.

Glenview Mansion is located at Rockville Civic Center Park, 603 Edmonston Dr., Rockville, MD.

Thank you for supporting the arts and your fellow artists!



RAL BOARD OF DIRECTORS

Name	Position	E-mail
Patrick Sieg	<i>President</i>	president@rockvilleartleague.org
Vacant	<i>President Elect</i>	president@rockvilleartleague.org
Lisa Sieg	<i>Vice President/ Exhibits Coordinator</i>	jshows@rockvilleartleague.org
Richard Fisher Sarah Sohraby	<i>Program Coordinators</i>	programs@rockvilleartleague.org
Lisa Sieg	<i>Volunteer Coordinator</i>	volunteer@rockvilleartleague.org
Vacant	<i>Membership Coordinator</i>	membership@rockvilleartleague.org
Rob Gale	<i>Treasurer</i>	treasurer@rockvilleartleague.org
Cathy McDermott	<i>Secretary</i>	secretary@rockvilleartleague.org
Susan Dunnell	<i>Newsletter Editor</i>	newsletter@rockvilleartleague.org
Liliane Blom	<i>Liaison Officer</i>	liaison@rockvilleartleague.org
Dave Allen	<i>Publicity/marketing</i>	publicity@rockvilleartleague.org
Helen Wood	<i>Communications</i>	communications@rockvilleartleague.org
Vacant	<i>Hospitality</i>	hospitality@rockvilleartleague.org
Diane Jeang	<i>Member Shows</i>	mshows@rockvilleartleague.org
Michael Auger	<i>Webmaster</i>	webmaster@rockvilleartleague.org
Eileen Mader	<i>Founder</i>	

Rockville Art League
P.O. Box 4026
Rockville, MD 20850

