



RockvilleArtLeague.org Vol. XXXIV No. 4 December 2024

Next Meeting: Thursday, February 6, 7PM
Multimedia Artist and Curator Sondra N. Arkin

Message from the President, Patrick Sieg

Dear Rockville Art League artists,

I am much looking forward to our Juried Members' Winter Show 2024.

We had many, many entries and the work is beautiful.

Our judge, Dr. Lorena Bradford devoted much time to selecting accomplished work that will look great together and make for a beautiful exhibition.

Now that she has made a hard choice of which works will be in our show, she is undertaking the even harder job of determining which pieces deserve special recognition via awards. The final review for award choices will be in person on December 3rd.

Many thanks to all artists who have taken a risk by entering our juried show with such beautiful and thoughtful work.

I am in awe of our artists with their creativity, artistic expression, and the quality of their work.

As a reminder, the opening "meet the artist" event will be on Sunday, December 8, from 1:30 to 3:30 pm. Our judge is planning to join us in person for this event to share some observations and comments and to present awards.

"I don't know a better definition of an artist than one who is eternally curious."

Charles Hawthorne

We had a terrific presentation from Michael Koren on photography that can be done with our smart phones and available editing applications. I am continually curious about the power in these phones and applications and seeing Michael's presentation makes me want to learn more.

There is a beautiful show on display at the Glenview Mansion Art Gallery by the Montgomery Art Association titled "Autumn Colors and Reflections." Many RAL artists are also members of MAA and you will see many familiar artist names, and a few new ones, when you visit the show. I encourage you to do so.

The Rockville Art League is lucky to host four shows at the mansion each year and it is also nice to see four shows from other art organizations as well. It is great to see differing perspectives and a variety of beautiful work.

Thank you to the many members who chose to renew this year, and welcome to our new members. The membership year lasts until the end of August 2025, and hopefully members who have not yet renewed will find it in the heart to do so. We need and appreciate your support.

Later in this newsletter you will see a show call for a RAL themed show titled “Winter Garden.” This botanicals-based show immediately follows our juried show. Please read the call and enter your artwork.

Fall is ending and shorter days and longer evenings are upon us. While I sometimes enjoy painting in Plein Air, I find myself quite productive in the studio. I look forward to creating new work in the cooler seasons and find inspiration in the fall colors that find their way into my winter work. Not to mention the inspiration I have gotten from the entries to our Winter Juried Show.

“Beauty in art is the delicious notes of color one against another. It is just as fine as music, and it is just the same thing, one tone in relation to another tone.”

Charles Hawthorne

Thank you for being members of the Rockville Art League and for your creativity.

Sincerely,
Patrick Sieg

Rockville Art League Speaker Series

RAL offers six presentations a year: September, October, November, February, March, and April. They are on zoom. Invitations are sent out a few days prior and also posted on the Rockville Art League website.

[Thursday](#), Sept. 12, Dr. Irina Stotland ***The Ukrainian Avant-garde***

Irina Stotland discussed the work of these select artists of the Ukrainian Avant-garde of The School of Paris, David Burliuk, Sonia Delaunay and Alexandra Exter who are important to Modern Art; two of them are women and one of the women, Sonia Delaunay was the first female artist to have been given a retrospective at the Louvre. Their stories are as fascinating as the work they produced. If you missed her talk, please watch the video for an in-depth overview of these important artists; it is available on the RAL website at the very bottom of the page by clicking on the YouTube icon.

Thursday, October 3, Lorena Bradford on ***Let's Look Together***

We were delighted to welcome Dr. Lorena Bradford from the National Gallery of Art for an evening of looking at art together. She guided us as we looked at a work of art together, facilitating an interactive conversation. It was a pleasant hour to slow down and truly luxuriate in the selected work – beginning with initial impressions to closer inspection, to observations from the group, and then finding out the

fascinating back story. The piece is on display at the National Gallery of Art and would be well worth a trip to see in person. The zoom recording was sent out to RAL members on October 5.

Thursday, Nov. 7, Photographer Michael Koren on *Artistic Expression with Mobile Photography*

Thank you to those who joined us on Nov. 7 for Michael Koren's presentation on the camera that's always with us, aka the smartphone. He offered tips, techniques and his expertise on learning how to overcome its limitations, going beyond a simple snapshot to take better pictures and create photos that offer artistic expression. He recommended settings that are built right in our phones such as "Live" and "Grid" (on), "Flash" (off) and the reasons why. Editing software within our phones can enhance, straighten, crop (vertically and horizontally), etc., an image. There are also a wide array of editing and artistic apps out there; he showed us his favorites and also demonstrated a world class app called *Snapseed*. *Snapseed* is a free app for smart phones and tablets that members may be familiar with and perhaps have downloaded it already. It offers a variety of tools, from editing to repairing to enhancing photos. For more about Michael Koren, his classes, and to view some of his creations please visit: https://www.michaelkorenphotography.com/?mc_cid=c35e5960d1&mc_eid=fa91431a04 The recording was mailed out to all members on Nov. 8 and is available to view on RAL's YouTube.

Thursday, February 6, 2025, Multimedia Artist and Curator **Sondra N. Arkin**

**Rockville Art League
Winter Garden
January 26 – February 14
Glenview Mansion Art Gallery
Entries accepted: December 12 - January 2**

Winter will soon be upon us. As the temperatures drop, the gardens and parks outside transform to those of quietude with berries, branches and botanicals becoming the stars.

Inside, on a warm and sunny sill or tabletop, plants will bask in the sunlight. A conservatory or greenhouse becomes an especially welcome sight. Many of us move our favorite plants indoors for safe keeping until spring and create our own indoor garden.

Or perhaps your winter garden consists of a favorite botanical of another season – memories of vibrant leaves, fruit, maple samaras or milkweed fluff fluttering in the wind, beautiful flowers from a field, garden, or in a container or vase, locally or from an entirely different climate.

Looking out, looking in, enjoying what's outside, thriving inside, a favorite botanical, what spring might bring, the winter garden can fortify the spirit.

We are looking for your original creations of botanicals to transform the Glenview Mansion Art Gallery into a winter garden. Perhaps the harbinger of spring. And it might just be enough to sustain us until then.

Rockville Art League members in good standing are invited to submit original works of up three (3) pieces of art for consideration for this themed show Winter Garden to be exhibited at Glenview Mansion Art Gallery.

We are honored to have Lisa Denison award prizes of recognition.

This themed show is sponsored by the City of Rockville and the Rockville Art League and will follow the RAL Juried Members' Winter Show and will be in conjunction with the 2025 Rockville Student Juried Art Exhibit.

Depending on the number of pieces accepted in the student show will determine how many pieces we can accommodate for this themed show.

Representational, abstract, impressionistic, etc., in the six different categories of medium listed below. Original artwork only may be submitted in the following mediums:

- oils/acrylics
- watercolors
- drawings, pastels, hand-pulled prints
- mixed media, collage, experimental
- photography
- sculpture

Note: the work for this show may have been exhibited in a prior show and acceptance in this show does not preclude its entry in a future show.

IMPORTANT! Please read the Show Agreement prior to entering. By submitting work into this show, you agree to the terms listed in the show agreement listed here:

"I agree to the rules of the show as presented in this show call and the schedule below, and that my entries are my original works. I will not hold the Rockville Art League (RAL), Glenview Mansion, or the City of Rockville responsible for any possible loss or damage to my entries. As with any show, I understand that all reasonable care will be taken in the handling of my artwork. I give RAL, Glenview Mansion, and the City of Rockville permission to use images of my artwork and publish them as appropriate. I acknowledge a commitment to donate 20% of the sale price of my work, if sold during this show at Glenview to the City of Rockville."

All two-dimensional (2-D) pieces will need to be framed, gallery-wrapped or professionally finished, securely wired, ready for hanging with the maximum measurement of any framed side of 48 inches. If submitting unframed work, the edges should be painted or finished. NO wet paint. Entries not meeting the show conditions will not be accepted. RAL retains the right to determine the suitability of the work for entry in this show.

HOW TO ENTER:

To submit work, please use your same personal link and password that was sent to you by Patrick Sieg when you renewed this year. Entries accepted: Dec. 12 – Jan. 2.

When you submit work, you will need to complete the following for each of your pieces (up to 3 entries only):

- Title
- Medium

- Price (not wholesale!) (If Not for Sale, please leave blank and we will confirm with you)
- A clear image (jpg.) of your artwork (no glare, no frame, no reflection, no furniture, etc.)
- Dimensions (note: depth is for sculpture only). If entering 2-D work, height, and width ONLY. PLEASE DO NOT fill out “depth” unless you are entering sculpture or ceramics.
- Description is optional; date is optional (do not check circa).

Note: When you submit work, if you entered artwork in the RAL Shows in the past year, you will still see the images of those pieces. They are marked internally for those shows within the system. The work entered from December 12 – January 2 will be marked internally specifically for the RAL Winter Garden Show.

Schedule:

Exhibition Dates: January 26 – Feb. 14

Entries accepted: December 12 – January 2

THURSDAY, January 2: deadline for all submissions.

Tuesday, Jan. 7 notification of acceptances sent out to all members and posted on RAL website.

TUESDAY, Jan. 21: drop-off artwork at Glenview Mansion, 10:00am-1:00pm. (same date/time as pick up of RAL Juried Members’ Winter Show)

SUNDAY, Jan. 26: “Meet the Artists” opening at Glenview. 1:30-3:30pm.

TUESDAY, Feb. 18 pickup of artwork 10:00am-1:00pm.

This show will be exhibited in person at Glenview Mansion (located at the Rockville Civic Center Park/603 Edmonston Dr.) Additionally, the virtual show will be available to view on the Rockville Art League website and sent to all members to share.

We look forward to seeing your creations.

Deadline for submissions: Thursday, January 2.

As always, if you need help, please ask ahead of the deadline.

NOTE: please be aware that the time between the notifications and the delivery of artwork is brief - approximately 2 weeks - so please be sure any work entered will be ready for display by the drop off date.

Questions or need help, contact:

Lisa Sieg: jshows@rockvilleartleague.org

Patrick Sieg: president@rockvilleartleague.org

Membership

We appreciate our members and their support for the Rockville Art League.

Our membership year runs from **September 1, 2024, to August 31, 2025**. If you haven’t yet renewed, please consider renewing your membership. RAL dues are **\$40 for the entire year**.

Please renew and take advantage of our *members only* exhibition opportunities, the presentations and networking, and other benefits that can help you grow as an artist. We have six meetings a year, currently on zoom with excellent speakers, discussions, and demos. Please visit the website

<https://rockvilleartleague.org> and click on the word *Membership* to see a complete list of membership benefits.

We kicked off the year on **September 12** with an in-depth presentation by art historian Dr. Irina Stotland on *The Ukrainian Avant-Garde*. On **October 3**, Dr. Lorena Bradford from the National Gallery of Art guided us as we engaged with a selected piece of art together. **Nov. 7**: we welcomed photographer Michael Koren on *Artistic Expression with Mobile Photography*.

Our monthly meetings this year are on Zoom. Zoom invitations are sent out a few days prior to the email you receive your RAL mailings. They are also posted on the website.

IMPORTANT: Please be sure the email is the one you check often and read. If your email has changed and you'd like to update it, you may easily do so by updating your preferences at the very bottom of the RAL mailings – or let us know.

We have two large, juried member shows, in winter and spring, and both feature virtual exhibits on the website and are in person at the Glenview Manion Art Gallery. We also offer members unique opportunities.

We are getting ready for our ***RAL Juried Member's Winter Show*** opening on Dec. 8. Notifications of accepted artwork can be found on our website. This will be followed by the botanical themed RAL ***Winter Garden*** Show. Please see the call for entries in this newsletter. Your **personal link and password** to enter the shows this membership year is sent to members in good standing by Patrick Sieg.

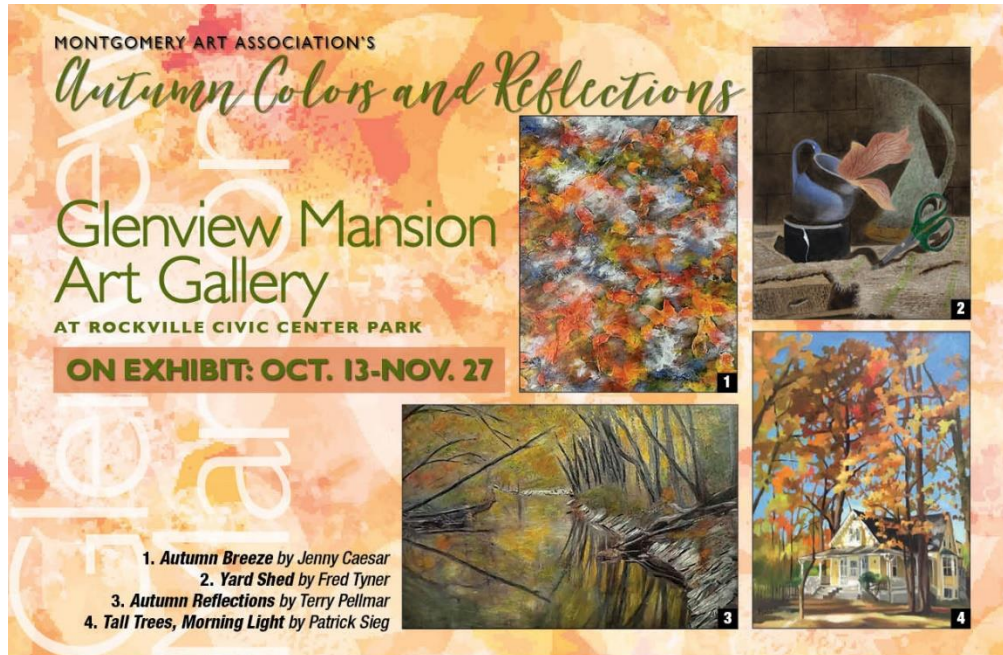
Membership is \$40. You can easily renew on the RAL website “pay now” button or if you prefer to pay by check, please make it payable to ***Rockville Art League*** and mail to:

Rockville Art League
c/o Rob Gale
108 W. Argyle St.
Rockville, MD 20850

Thank you to those who have already renewed, and a warm welcome to new members! **Unsure of your membership status?** Please send a note to: president@rockvilleartleague.org

Glenview Mansion Art Gallery Exhibitions

Glenview Mansion Art Gallery is located at 603 Edmonston Dr. at the Rockville Civic Center. Open weekdays, Monday – Friday, 9:00am-4:30pm. Please check the Glenview Mansion website <https://www.rockvillemd.gov/389/Glenview-Mansion> before coming out or call 240-314-8681. There is plenty of parking and an elevator to all levels of the gallery. The gallery is located on the 2nd floor. It is quiet and uncrowded during the week. ***Meet the Artists*** events are free and open to the public. Thank you for supporting the arts and your fellow artists.



On Exhibit: Oct. 13-Nov. 27

MONTGOMERY ART ASSOCIATION'S

Autumn Colors and Reflections

Meet the artists from 1:30-3:30 p.m. Sunday, Oct. 13.
Event is free and open to the public.

For information, call 240-314-8681 or 240-314-8660.
For recorded directions, call 240-314-5004. *Glenview
Mansion Art Gallery is wheelchair accessible.*

Gallery Hours: Monday-Friday, 9 a.m.-4:30 p.m.; gallery
is closed on official city holidays.



**Glenview Mansion
Art Gallery**
at Rockville Civic Center Park
603 Edmonston Drive
Rockville, MD 20851



Glenview Mansion Exhibition

Montgomery Art Association's *Autumn Colors and Reflections*

On Exhibit: October 13 – November 27

Meet the Artists on **October 13**, 1:30-3:30pm – Everyone is welcome!

This show is sponsored by the City of Rockville.

Rockville Art League
Juried Members' Winter Show

On Exhibit: December 8 – January 17

Juried by Lorena Bradford. Please find the list of accepted artwork and information on the RAL website. This was also mailed to all members on Nov. 11. **All artwork accepted** in this show must be exhibition ready and delivered to Glenview Mansion on **Tuesday, Dec. 3, 10:00am-1:00pm**. The judge will review the work that afternoon and assign awards choices.

Rockville Art League
Winter Garden

On Exhibit: January 26 – February 14

Entries accepted: Dec. 12 – Jan. 2

Please see the show call and all details for this *themed* show that will be in conjunction with the **Rockville Student Juried Art Show** in this newsletter. We will be looking for your original creations of botanicals to transform the gallery into a *winter garden*. Please note: we are NOT accepting any entries for this themed show until **December 12**.

Virtual Shows, Sales, and Inquiries

Virtual shows are updated and posted to the Rockville Art League website by webmaster Michael Auger. The recent RAL exhibition may be over but the RAL ***Water, Water Everywhere Show*** is currently available to view.

How to access the current virtual show and past ones:

Go to <https://rockvilleartleague.org> and click on the button for the current virtual show, ***RAL Water, Water Everywhere Show***. (If you haven't visited the RAL website lately, you may need to hit refresh.)

Once you open the current virtual show, you can view all the work in the show, or if you prefer to see it by *specific artist*, click on the word "**Artists**" and, if you would like to view it by category of artwork, click on the word "**Rooms**". If you are interested in a specific piece, you can click on that artwork. If you would like **to view a past virtual show**, click on the word "**Exhibitions**" and you will see the show cards from prior shows.

Find the show card of the one you would like to view and click on the name of the show (ex: ***RAL Juried Members' Spring Show***, and ***Portraits: Creatures Great or Small***) right below the show card and you can view that show. (Note: RAL's Artwork Archive account has the capacity to store up to 1000 images of artwork; as new shows are uploaded, the works in past shows are no longer viewable. We do retain records with images of work from past shows.)

You can inquire or send a purchase request on the piece on the virtual show. On occasion, we receive inquiries for work in past shows still viewable through our virtual shows. Any inquiries or purchase requests are forwarded to the artist.

These shows are beautiful thanks to our talented members.

RAL Speaker Series Presentations Available on YouTube

We offer 6 presentations a year in our *Speaker Series*. Because we meet on zoom, they are recorded and are sent out to members and, also, posted on RAL's YouTube, thanks to Helen Wood. If you have missed any of them, you can access them by going to the Rockville Art League website and scrolling to the very bottom of the page. Once there, click on the small icon to the left of the word YouTube.

MEMBER NEWS



Elizabeth Steel's welded steel sculpture, "Guita's Garden," will be exhibited in the Montgomery Art Association's "Exploring Color, Shape, and Texture" show at the Goldman Gallery, JCC, November 3-December 15.

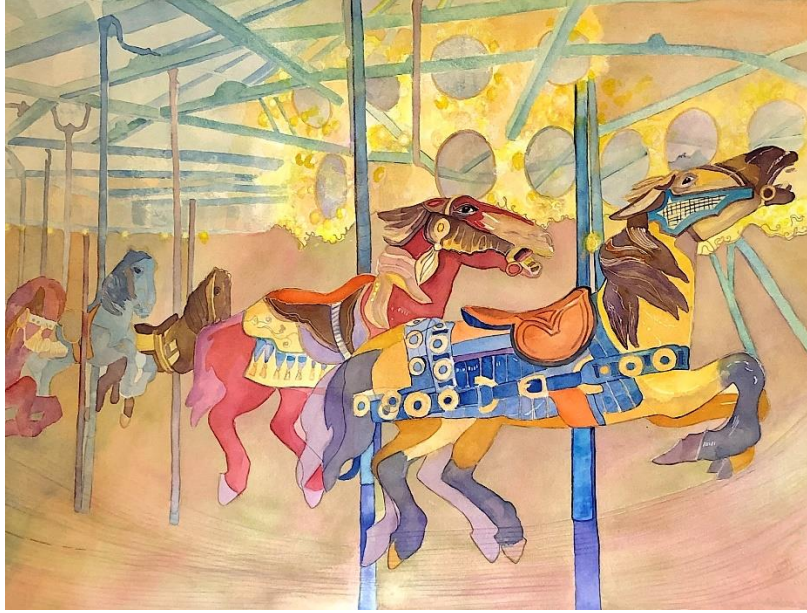


Lily Kak's aqueous media collage painting "Autumn Glow on the Ganges River," received the First Prize at the Montgomery Art Association's Autumn Colors and Reflections Show. The show is at the Glenview Mansion, Rockville, from October 13-November 27, 2024.



THE SHOW IS UP!! "Turning Points" is on display at the Kensington Park Library during library hours through November 29, 2024. Can't make it to the show? Check out my website, www.bellslessons.com. You will find a link at the bottom of the Home page that will take you to a page with images and prices of all the works in the show. Take a time-out, borrow a new book and enjoy my art.

"Turning Points" is an exhibition of my large watercolor paintings and several of my new photographs. This November, in the midst of national and local election turmoil, I turn my attention to significant and reassuring transitions in the natural world from one season to the next. My paintings also include references to my family history that depict universal themes of shared cultural experience. Most evident in the paintings and photographs is an effort to break new ground in my work as an artist, striving to create paintings and photographs that connect in a meaningful way with my viewers and provide a few moments of peace and calmness in their lives.



Turning Points Notes

Flying Horses: A chance encounter with one of the nineteenth-century carousels in Johnson City, New York brought back memories of riding the “flying horses” at Savin Rock in West Haven, Connecticut, my childhood home. Though the amusement park that housed the “horses” is long gone, the memory of the ride and reaching for the brass ring remains in my mind’s eye.



Flanders Fields: An extension of an annual shared Veteran’s Day lesson between my Middle School World Studies Class and our British “pen pal” class, this painting is based on the poem by John McCrae “In Flanders Fields” about the poppies that grew among the graves of fallen soldiers in Flanders, Belgium during WWI.



Grandmother's Story: Comprised of items that belonged to my late Grandmother, they trace her journey as a young immigrant from Russia/Ukraine to 1920s New York. Pictured are a carved wooden plaque, likely after a painting by Russian artist Konstantin Federovich Yuon (1875-1958) a reminder of her past that now hangs on my wall as it once did on hers. The Zsolnay vase in the pattern celebrating Hungary's Millennium (made between 1896 and WWI) was probably a wedding gift. Both items came with her when she crossed the Atlantic in 1923 to reunite with her husband who came ahead in 1920. The art nouveau candlestick was one of a pair which appeared on her dinner table at every family celebration until her death in 1977.

Remembrance: Painted in the midst of trying times, is both an ode to good times past and to the lives of loved ones lost to the pandemic. It pays homage to the deep emotions felt during those dark years, and to the comfort and peace afforded me through my painting.

Anemones: A companion piece to Remembrance, was painted as the harsh years of the pandemic were on the wane. Also known as "Windflowers," anemones foreshadow the arrival of spring breezes and the anticipation of change and renewal to come. **Surprise:** One of my earliest paintings done under the guidance of my then new and extraordinary watercolor teacher, David R. Daniels, Surprise represents the start of a fifteen year plus second career as an artist. While hiking on the Isle of Skye with my UK friends, I was surprised by the sudden appearance of these striking mushrooms. Researching my photos of them when I returned home, I discovered that their beautiful appearance concealed their deadly nature, a duality that would be a theme in many of my paintings in the years that followed. Surprise was both a turning point in how I perceived the natural world and in the emergence of a new and exciting approach to painting. **Six Photos:** The photographs in this exhibit were part of a year-long project called "365-Give it a shot," begun by Mary Haynes Johnson as an exercise for her class at Cecil College. Introduced to her group by Mary's brother, Jim Haynes, a colleague of mine in a watercolor group, I began taking daily photographs and posting to the "365" group, sharing with the group members and posting outside the group for my FaceBook friends, a practice I continue each day. Many of my photos have been a resource for my paintings, and I have begun to exhibit them as works in their own right

4201 Knowles Avenue Mon.-Thurs. 10am-8 pm
Kensington, MD 20895 Fri.-Sun. 10 am- 6 pm
240-773-9515



Angela Lacy's painting *Bike Chaos* was selected for the BWS Mid-Atlantic Regional Juried Exhibition, and I'm honored that juror Russell Jewel awarded it a Merit Award. The exhibition is currently on display at Kentlands Mansion/Arts Barn through January 6.



Helen Wood's pastel painting "Aspen Glow" was awarded 3rd place in the Montgomery's Art Association "Autumn Colors & Reflections" Art Show at Glenview Mansion. The judge was renowned artist Jordan Bruns.

This fall-inspired exhibition runs until November 27, showcasing beautiful autumn landscapes, mosaics, and glass art.



Sandy Yagel received an Honorable Mention for her watercolor painting, “Dressed for Success” in the Olney Art Association's 50th Anniversary show juried by Greg Mort. The OAA show is at the Sandy Spring Museum through November 17.



She also received a Merit Award for her painting, “Spent” in the Baltimore Watercolor Society's MidAtlantic Show juried by Russell Jewell. The BWS show is at the Kentland Mansion and Art Barn throughout January 5. (Her painting is hanging in the Art Barn.)



“Highly Animated” is a juried art exhibit celebrating animation, anime, cartoons, and comics! The Exhibit runs through November 30. There is an Artist Alley marketplace on November 23rd from 5pm—7pm. Featured Artists: **Michael Auger**, Chris Brown, Mijin Chun, Lindsey Clifford, Kira Godley, Tom Kemp, Trei Ramsey, Ruger Steele, and Regina Williams. The beachKraft Art Gallery, 18200 Georgia Ave Unit N + O, Olney, MD 20832
[Current Exhibits](#) | [thebeachkraft site](#)



Ken Bachman has a solo exhibit, “Capturing the Moment,” at the Women’s National Democratic Club of a selection of his recent landscape oil paintings, including the pictured works. The exhibit will continue through February 4.

The Women’s National Democratic Club is located at 1526 New Hampshire Avenue, NW, near Dupont Circle. For more information visit: www.democraticwoman.org



www.Kbachmanart.com

2025 CALL FOR ARTISTS

Rockville Student Juried Art Exhibit

City of Rockville's Arts Division and the Rockville Art League announce the 2025 Rockville Student Juried Art Exhibit.

Open to students in grades 6-12 who live or attend school in Rockville.



Eighty works are expected to be selected for the show. Art is not insured by the City of Rockville.

SCAN ME
for entry form

ELIGIBILITY REQUIREMENTS

1. Students in grades 6-12 who live or attend school within the City of Rockville corporate limits can enter two 2-D or 3-D works of art, in any medium, to be considered for the show.
2. Work must be appropriately finished, framed and securely wired for hanging. No wet paint.
3. Students need to complete and submit the online entry at <https://bit.ly/3ZHNjiL> by **Monday, Dec. 2.**
4. Students will be notified by Friday, Jan. 3 if their artwork was selected to be in the juried show.

www.rockvillemd.gov/arts • 603 Edmonston Drive, Rockville, Maryland



2025 EXHIBIT CALENDAR

1. The delivery of selected artwork by the student or guardian from 4-6:30 p.m. on Tuesday, Jan. 21 at the Glenview Mansion Art Gallery. The gallery is located at Rockville Civic Center Park, 603 Edmonston Drive, Rockville, MD 20851.
2. The "Meet the Artists" event is scheduled from 1:30-3:30 p.m. on Sunday, Jan. 26.
3. The exhibit dates are Jan. 26-Feb. 14.
4. The pickup of artwork is scheduled from 4-6:30 p.m. on Tuesday, Feb. 18.

FOR MORE INFORMATION: Please contact Betty Wisda, Arts Programs Supervisor, at bwisda@rockvillemd.gov.



HOURS AND LOCATION

Glenview Mansion Art Gallery at Rockville Civic Center Park
603 Edmonston Drive, Rockville, MD 20851

Gallery Hours: Monday through Friday, 9 a.m.-4:30 p.m.; closed official city holidays.
Call 240-314-8660 to check on availability of gallery for viewing.

Interested parties can use this link: <https://bit.ly/3ZHNjiL>

Calling All Artists

Blossoms 2025 Countywide Art Show

**Call for Entry
NOW through Nov.1, 2024
NEW DEADLINE: EXTENDED TO DEC. 1
Theme: Pink/White Blossoms
All Mediums • All Ages**

A Grant
From



In Partnership With





**Glenview Mansion
Art Gallery Exhibit
APPLICATION DEADLINE:**
5 p.m. on Monday, Dec. 2.



CALL FOR ARTISTS 2025

The City of Rockville celebrates its commitment to the arts through programs that reflect the diversity and vitality of the community. It is with great pride that the Glenview Mansion Art Gallery continues to showcase the finest artists in the region.

ELIGIBILITY: Open to all art leagues and organizations in the greater metro area (includes Maryland, Virginia and Washington, D.C.).

SELECTION PROCESS: All submissions will be reviewed by gallery staff along with an art professional.

CALENDAR: Entries due by **Monday, Dec. 2**; artist notification by **Friday, Jan. 3**.

GALLERY HOURS: Monday through Friday, 9 a.m.-4:30 p.m.; closed official city holidays and for special Glenview Mansion private events.

GALLERY SPACE: The floor plan below shows exhibition space in the Glenview Mansion Art Gallery, located on the second floor and accessible by stairs and an elevator. Exhibits are limited to gallery rooms 1-6 and connecting hallways. The walls can accommodate 100-120 works, depending on size, with space for three-dimensional works, either free-standing or on pedestals. Gallery windows are protected by UV film to prevent sun damage.



Interested artists and organizations need to complete and submit an online entry form at <https://arclg.is/i5TSO0>.

Submissions must include the following information:

- Name of group.
- Number of members.
- Contact's address, email, daytime phone number.
- Title/theme of exhibit.
- Exhibit proposal.
- Five to 10 images representative of your group's work.

Availability for Exhibit:

- Feb. 23-March 21, 2025.
- March 30-May 9, 2025.
- Sept. 7-Oct. 3, 2025.

Note: The \$150 administrative fee to help offset the cost of staging the exhibit is collected after applicants' acceptance.



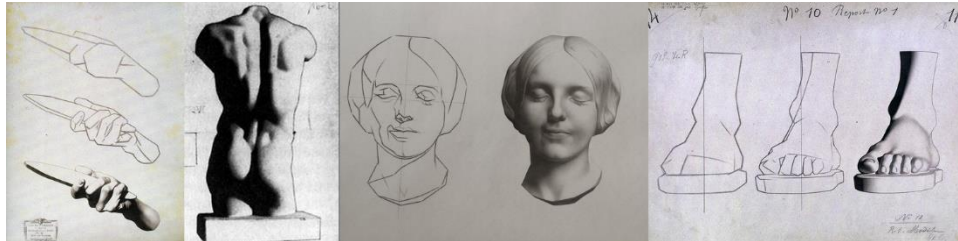
For more information, contact:

Betty Wisda, Arts Program Supervisor, bwisda@rockvillemd.gov or 240-314-8681 or visit online at www.rockvillemd.gov/607/Art-Gallery.



www.rockvillemd.gov/arts • 603 Edmonston Drive, Rockville, Maryland

If you are interested, please copy and paste the link below in your browser; it will take you to the application. <https://arclg.is/i5TSO0>



Sameer Sharma will teach an eight-week class on how to draw using the time-tested Bargue Method. Classes are every Friday, January 10—February 28, from 10 am until 1 pm. The cost is \$395. For further information, or to register, please visit the link below:


[Compass Art Center — The Bargue Method • Sameer Sharma • Fridays, January 10-February 28 • 10AM-1PM](#)


Discount on Custom Framing

Jae Shin has been working as a professional picture framer for 2 decades at the Framers' Workroom located in Tenleytown, DC. Jae offers 15% off on custom framing jobs for RAL members. Please feel free to contact Jae for any framing jobs. Framers' Workroom, 4431 Wisconsin Ave., NW, Washington DC 20016


202-363-1970. Store hours: Mon-Sat 10:00-5:30. www.FramersWorkroomDC.com

Email: Jaeshin@FramersWorkroomDC.com

 **The Compass Atelier**
Art classes for beginners and experienced artists
Special workshops Study Abroad
Home of the revolutionary Master Artist Program



TheCompassAtelier.com TheCompassAtelier@gmail.com



A Work of Art by Debra Halprin
Giclée Printing and Photography Service
Create Fine Art Prints of your Artwork
on Watercolor Paper or Canvas
[Mastering the Fine Art of Giclée Printing](#)
HalprinArt.com
301-910-4750
email: Debra@HalprinArt.com
in Rockville, Maryland

NEWSLETTER SUBMISSIONS

Is your art included in a show? Have other news you wish to share with RAL members?

Please send your submissions by the **15th** of each month for inclusion in the next newsletter, to:

newsletter@rockvilleartleague.org

Glenview Mansion Schedule				
2024 - 2025				
Exhibition Dates:	ARTISTS	Delivery of Artwork 10am-1pm	<i>Meet the Artists</i> Opening Event	Pick-up Artwork 10am-1pm
Oct. 13 – Nov.27	Glenview Exhibition: Montgomery Art Association <i>Fall Reflections</i>	Monday, Oct. 4 10:00am – 1:00pm	Sunday, October 13 1:30-3:30pm	TUESDAY, December 3 10:00am-1:00pm
Dec. 8, 2024 – Jan. 17, 2025	RAL Juried Members’ Winter Show	TUESDAY, Dec. 3 10:00am – 1:00pm	Sunday, Dec. 8 1:30-3:30pm	TUESDAY, Jan. 21 10:00am-1:00pm
Jan. 26 - Feb. 14	RAL Themed Show and Student Art Show	TUESDAY, Jan.21 10:00am – 1:00pm	Sunday, Jan. 26 1:30-3:30pm	TUESDAY, Feb. 18 10:00am-1:00pm

Artists displaying work in the gallery at Glenview Mansion will be contacted with detailed information about their shows, including the required show agreement. Labels and support to hang the show will be provided. The RAL shows are virtual on our website as well as in person at Glenview.

Meet the Artists opening events are free and open to the public. Plenty of parking and there is an elevator to all levels of the gallery. The art gallery is open weekdays Monday-Friday, 9am-4:30pm. Closed on official city holidays.

Please check Glenview Mansion website: <https://www.rockvillemd.gov/389/Glenview-Mansion> or call 240-314-8681 or 240-314-8660 before visiting.

Glenview Mansion is located at Rockville Civic Center Park, 603 Edmonston Dr., Rockville, MD.

Thank you for supporting the arts and your fellow artists!



RAL BOARD OF DIRECTORS

Name	Position	E-mail
Patrick Sieg	<i>President</i>	president@rockvilleartleague.org
Vacant	<i>President Elect</i>	president@rockvilleartleague.org
Lisa Sieg	<i>Vice President/ Exhibits Coordinator</i>	jshows@rockvilleartleague.org
Richard Fisher Sarah Sohraby	<i>Program Coordinators</i>	programs@rockvilleartleague.org
Lisa Sieg	<i>Volunteer Coordinator</i>	volunteer@rockvilleartleague.org
Vacant	<i>Membership Coordinator</i>	membership@rockvilleartleague.org
Rob Gale	<i>Treasurer</i>	treasurer@rockvilleartleague.org
Cathy McDermott	<i>Secretary</i>	secretary@rockvilleartleague.org
Susan Dunnell	<i>Newsletter Editor</i>	newsletter@rockvilleartleague.org
Liliane Blom	<i>Liaison Officer</i>	liaison@rockvilleartleague.org
Dave Allen	<i>Publicity/marketing</i>	publicity@rockvilleartleague.org
Helen Wood	<i>Communications</i>	communications@rockvilleartleague.org
Vacant	<i>Hospitality</i>	hospitality@rockvilleartleague.org
Diane Jeang	<i>Member Shows</i>	mshows@rockvilleartleague.org
Michael Auger	<i>Webmaster</i>	webmaster@rockvilleartleague.org
Eileen Mader	<i>Founder</i>	

Rockville Art League
P.O. Box 4026
Rockville, MD 20850

