



**RockvilleArtLeague.org Vol. XXXIII No. 9 May 2024**

**Next Meeting: Saturday, May 4, 10:30-11:30am on Zoom  
ACO Forum of DC Art Model Collective (DCAMC)**

### **Message from the President, Patrick Sieg**

Dear Rockville Art League artists,

Spring is an exceptionally busy time for artists...and a beautiful time of year.

We are energized to create, enter shows, see shows and for many of our members, be honored with awards.

Please check out the award winners in the recent Women's Club of Chevy Chase 48<sup>th</sup> Community Art Show and you will see many Rockville Art League friends among the artists receiving awards. We are so proud of you.

And by the time you see our newsletter, the artists accepted into the Juried Members' Spring Show has been communicated and our judge, Marianna Kastrinakas is hard at work making the equally difficult decisions on who will be recognized with awards for this show.

All our art shows are beautiful and competitive because of our members. Thank you for taking a chance and entering these shows. The judges we hire spend countless hours poring over the entries and must make difficult decisions in selecting from such a large pool of quality works. Please take advantage of the show opportunities we offer throughout the year. We are lucky to have been given space in the Glenview Mansion Art Gallery for two large, juried shows and two themed shows in 2024. The Rockville Art League has a strong relationship with the City of Rockville that has allowed us these opportunities.

Together with several other RAL artist friends, we visited the "Bonnard's World" exhibition at the Phillips Collection (it is on view through June 2 in case you're interested in visiting it). We were fortunate to have Dr. Irina Stotland present to us on the history of Les Nabis and Pierre Bonnard prior to our visit and her talk made the exhibit even more inspirational. (Note that you can view a recording of her talk on our YouTube channel by clicking on the icon at the very bottom of our RAL webpage.)

An element of the show and talk was the importance of Bonnard's favored model, years long companion and eventually his wife, Marthe Boursin. Marthe is prominent in many of the works and sometimes she seems to blend into the scenery.

"Painting has to get back to its original goal, examining the inner lives of human beings." Pierre Bonnard

Artist's models played an important role in the art of the Post Impressionists including Les Nabis. They are certainly misunderstood. They were memorialized in art, often served as the artist's muse, worked incredibly hard, sometimes became celebrated artists in their own right, and, unfortunately, the women models were often not held in the highest esteem.

I know that artist models are every bit as hard working today and they were in the 1890's and are certainly well respected now.

The Rockville Art League will be partnering with Art Clinic Online (ACO), founded by Jordan Bruns and Mariana Kastrinakis, on May 4<sup>th</sup> at 10:30-11:30 am on zoom for a Forum of the DC Art Models Collective (DCAMC). It will be interesting to hear how things have changed, have stayed the same and what the rewards of being an artist model may be. I am much looking forward to this discussion.

I mentioned themed shows above and immediately following our juried show, RAL will be hosting our summer show titled "Water, Water Everywhere." Summer is often linked with the love of water, as waves on the beach, under a boat, a lawn sprinkler or in a flower vase. I trust that we all have artwork where water plays an important role and I much look forward to seeing your work and the show they become.

"The Thames was all gold. God it was beautiful, so fine that I began working a frenzy, following the sun and its reflection on the water." Claude Monet

Thank you for being artists and for belonging to the Rockville Art League.

Sincerely,

Patrick Sieg  
President

## Rockville Art League Speaker Series

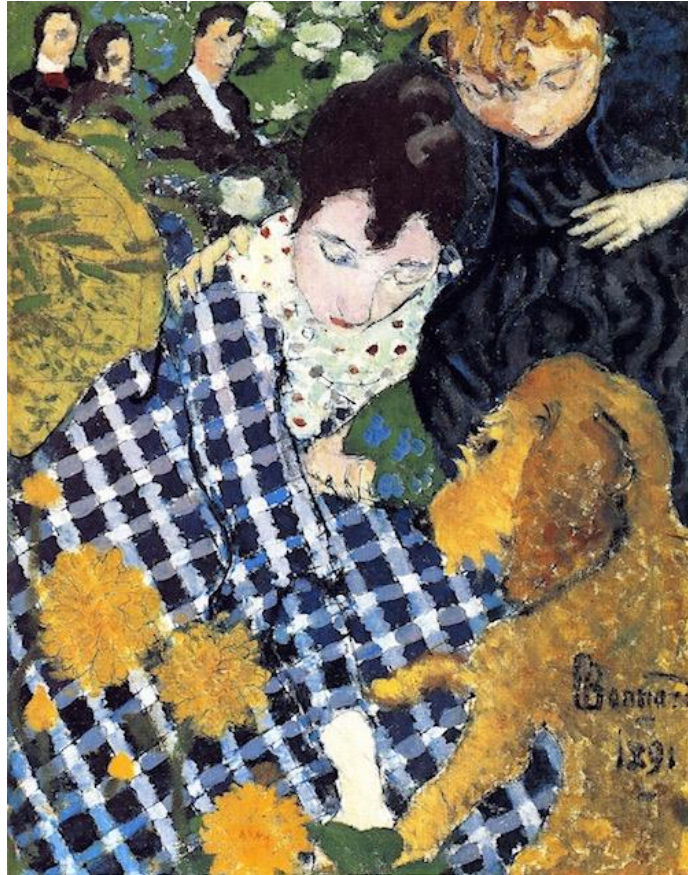
Mark your calendars for our spring 2024 meetings. These programs will be on Zoom. Zoom invitations are sent out to members a few days prior to the presentations and we plan to record them. The zoom link to join in *will also be posted* on the RAL website the day of the presentation.

**Dr. Irina Stotland, April 4**

***The Pleasures of Pattern: Pierre Bonnard and the Nabis***

We were delighted to welcome back Dr. Irina Stotland on Thursday, April 4 for quite an enriching presentation on ***The Pleasures of Pattern: Pierre Bonnard and the Nabis***. Thank you to everyone who

joined in and A BIG THANK YOU to Dr. Stotland for offering such an engaging discussion and overview of these artists and their works which allowed us to glimpse an intimate look at snapshots of domestic interiors and gardens, etc., through patterns, colors and rich textures, pets included. And it provided us with an understanding of this short-lived but impactful art movement centered around symbolism and the decorative arts. (If you have a chance, the exhibit *Bonnard's World* at The Phillips Collection in DC now through June 2 is worth visiting.)



If you missed her talk, the video was sent out to members on April 5 and you can also view it on RAL's YouTube which you can easily see by visiting the RAL website. Once there, scroll to the very bottom of the page and click on the YouTube icon. You can see this presentation and others. We thank Helen Wood for posting these presentations for RAL.



**Saturday, May 4, 10:30-11:30am** on Zoom

**ACO Forum of DC Art Model Collective (DCAMC)**

Rockville Art League in collaboration with Arts Clinic Online (ACO) is co-sponsoring a Forum of DC Art Models (DCAMC) on zoom on Saturday, May 4, 10:30-11:30am. Co-founded by artists J. Jordan Bruns and Mariana Kastrinakis, ACO's mission is to create dialogue, relationships, and community among artists of all levels working in the DMV area. Many of you have painted or drawn some of these models in workshops or classes and the rest of us have enjoyed their portrayals. They may already be familiar to you. This should be an interesting discussion with these members of the DCAMC, Sheba, Gazelle, Harry, and Jalene. Please mark your calendars and plan to join in! The zoom invitation will be mailed out to all members and will also be posted on <https://www.jjbruns.com/art-clinic-online/>



**A note about our Zoom invitations for our presentations:**

They are sent to members a few days prior. They will **also be posted on the Rockville Art League website** at that time, thanks to **Michael Auger**.

**Rockville Art League**  
***Water, Water Everywhere***  
**June 30 – August 30**  
**Glenview Mansion Art Gallery**

**Entries accepted: May 1 – May 29**

Rockville Art League *members in good standing* are invited to submit original works of *up to three (3) pieces of art for consideration* for this themed show ***Water, Water Everywhere*** to be exhibited at Glenview Mansion Art Gallery.

*From the tiniest drop falling from the sky to a babbling brook, a meandering stream or river, a gushing waterfall, a quiet pond, a marsh, glassy lake, or the deep blue sea. Calm and inviting, or stormy and dramatic. A waterscape with or without creatures or vessels. A puddle, a fountain in a park or even tabletop, a still life, in a glass or vase sustaining a few sprigs or a lovely bouquet. We are looking for your original interpretations of this extraordinary substance that we cannot live without.*

Help us make some waves and fill the gallery with your cool creations of water features this summer!

This themed show is sponsored by the City of Rockville Arts Division and the Rockville Art League and will follow the *RAL Juried Members' Spring Show*.

We are honored to have Therese Capal award prizes of recognition.

Original artwork only may be submitted in the following mediums only:

- oils/acrylics
- watercolors
- drawings, pastels, hand-pulled prints
- mixed media, collage, experimental
- photography
- sculpture
- *Note:* the work for this show may have been exhibited in a prior show and acceptance in this show does not preclude its entry in a future show.

**Deadline:**

Each member may submit up to three (3) pieces for consideration:

**May 1 – May 29**



**IMPORTANT! Please read the Show Agreement:** by submitting work into this show, you agree to the terms listed in the show agreement listed here:

“I agree to the rules of the show as presented in this show call and the schedule below, and that my entries are my original works. I will not hold the Rockville Art League (RAL), Glenview Mansion, or the City of Rockville responsible for any possible loss or damage to my entries. As with any show, I understand that all reasonable care will be taken in the handling of my artwork. I give RAL, Glenview Mansion, and the City of Rockville permission to use images of my artwork and publish them as appropriate. I acknowledge a commitment to donate 20% of the sale price of my work, if sold during this show at Glenview to the City of Rockville.”

**All two-dimensional (2-D) pieces** will need to be framed, gallery-wrapped or professionally finished, securely wired, ready for hanging with the **maximum measurement** of any framed side of **48 inches**. If submitting unframed work, the edges should be painted or finished. **NO wet paint**. Entries not meeting the show conditions will not be accepted. RAL retains the right to determine the suitability of the work for entry in this show.

### **HOW TO ENTER:**

**To submit work**, please use *your same personal link and password* that was sent to you by Patrick Sieg when you renewed this year. Entries accepted May 1 – May 29.

When you submit work, you will need to complete the following for each of your pieces (*up to 3 entries only*):

- **Title**
- **Medium**
- **Price** (*not wholesale!*) (If Not for Sale, please leave blank and we will confirm with you)
- **A clear image** (jpg.) of your artwork (no glare, no frame, no reflection, no furniture, etc.)
- **Dimensions** (*note: depth is for sculpture only*). If entering 2-D work, height, and width ONLY. Do not fill out “depth” unless you are entering sculpture or ceramics.
- Description is optional; date is optional (do not check circa).

**Note:** When you submit work, *if you entered artwork in the RAL Shows in this past year*, you will still see the images of those pieces. They are marked internally for those shows within the system. By entering work May 1 – May 29, those pieces will be marked internally for the *Water, Water Everywhere* Show.

### **Schedule:**

**Exhibition Dates: June 30 – August 30**

**Entries accepted: May 1 – May 29**

**Wednesday, May 29: deadline for all submissions.**

**Friday, June 7:** notification of acceptances sent out to all members and posted on RAL website.

**TUESDAY, June 25:** drop-off artwork at Glenview Mansion, **10:00am-1:00pm**. (same date/time as pick up of *RAL Juried Members’ Spring Show*)

**SUNDAY, June 30:** “Meet the Artists” opening at Glenview. 1:30-3:30pm. Awards at 2pm.

**TUESDAY, Sept. 3:** pick up of artwork 10:00am-1:00pm.

**This show will be exhibited in person at Glenview Mansion** (located at the Rockville Civic Center Park/603 Edmonston Dr.) Additionally, the virtual show will be available to view on the Rockville Art League website and sent to all members to share. We look forward to seeing your creations.

**Deadline for submissions:** Wednesday, May 29

As always, if you need help, please ask *ahead of the deadline*.

**NOTE:** please be aware that the time between the notifications and the delivery of artwork is brief - approximately 2 weeks - so please be sure any work entered will be ready for display by the drop off date.

Questions or need help, contact:

Lisa Sieg: [jshows@rockvilleartleague.org](mailto:jshows@rockvilleartleague.org)

Patrick Sieg: [president@rockvilleartleague.org](mailto:president@rockvilleartleague.org)

## Glenview Mansion Art Gallery Exhibitions

**Glenview Mansion Art Gallery** is located at 603 Edmonston Dr. at the Rockville Civic Center. Open weekdays, **Monday – Friday**, 9:00am-4:30pm. Please check the Glenview Mansion website <https://www.rockvillemd.gov/389/Glenview-Mansion> *before* coming out or call 240-314-8681. Plenty of parking and there is an elevator to all levels of the gallery. The gallery is located on the 2nd floor. It is quiet and uncrowded during the week. ***Meet the Artists*** events are free and open to the public. Thank you for supporting the arts and your fellow artists.

***The Colorists*** Feb. 25 – April 5 Congratulations to these six fine Maryland artists, Holly Buehler, Sandy Fritter, Joanie Grosfeld, Jeanne Powell, Penny Smith, and Kathleen Zeifang, on their multifaceted show in vivid colors and bold brush strokes in their unique styles ranging from impressionistic to the abstract. If you missed this beautiful show or are still thinking about a piece, you can view the virtual show on the Rockville Art League website. Click on the piece you are interested in. All inquiries or purchase requests for this and any of the RAL shows are forwarded to our artists.

# Glenview Mansion

## Glenview Mansion Art Gallery

AT ROCKVILLE CIVIC CENTER PARK

**Gaithersburg Camera Club**  
"Up, Down, and All Around"

On Exhibit:  
April 14- May 10

1. *Little Lost Bunting*  
by Carol Gregoire
2. *Apparition*  
by Frank Cerra
3. *Depth Perception*  
by Barry Scheiner
4. *Norwegian Fjord*  
by Sabine Dickens
5. *Textured Trio*  
by Judy MacArthur



On Exhibit:  
April 14-May 10

## Gaithersburg Camera Club "Up, Down, and All Around"

Meet the artists from  
**1:30-3:30 p.m. Sunday, April 14.**  
Event is free and open to the public.

For information, call 240-314-8681 or 240-314-8660.  
For recorded directions, call 240-314-5004. *Glenview Mansion Art Gallery is wheelchair accessible.*  
**Gallery Hours:** Monday-Friday, 9 a.m.-4:30 p.m.;  
gallery is closed on official city holidays.



Glenview Mansion  
Art Gallery  
at Rockville Civic Center Park  
603 Edmonston Drive  
Rockville, MD 20851





## **Gaithersburg Camera Club**

### ***Up, Down, and All Around***

**Exhibition Dates: April 14 – May 10**

About Gaithersburg Camera Club and their exhibit: “Established in 1973 to help its members become better photographers through lectures, workshops, field trips, and competitions, our camera enthusiasts of varying skills and interest, range from novice to the very advanced, and our programs provide opportunities to learn from others who share a passion for photography. Many members exhibiting work in group or solo shows have received awards in local as well as international competitions with some members receiving recognition in national publications. Our photographers develop their artistic viewpoint over a broad spectrum of subjects from landscapes, street art, wildlife, abstracts, architecture, and many other themes. Through our photographic eye, we invite the viewer to feel the emotion of the moment we captured. This exhibit represents a diverse set of styles and perspectives focused on a variety of subjects.” This show is presented by the Gaithersburg Camera Club and sponsored by the City of Rockville. The work is stunning! Come see it.

## ***Rockville Art League Juried Members’ Spring Show***

**On Exhibit: May 19 – June 21**

We are honored to have **Mariana Kastrinakis** as juror. She has had to make difficult decisions in selecting from such a large pool of quality artworks. The notification of accepted artwork has been sent out to members and is posted on the RAL website. Please read the notice carefully for all details, including show agreement, show fee and schedule.

Please mark these important dates on your calendar:

**TUESDAY, May 14** - *delivery of accepted artwork* at Glenview, **10:00am-1:00pm**. If your work is accepted into this show, you or your designee must deliver your work on this date. The judge will assign prizes based on an in-person view that afternoon.

**Sunday, May 19** - 1:30-3:30pm, ***Meet the Artists Opening*** at Glenview Mansion. Mariana Kastrinakis will **award prizes at 2:00pm** with remarks about the work. She will also be available to talk with artists.

Notification of accepted artwork has been sent out to members and is posted on the RAL website. Please read the notice carefully for all details, including show agreement, show fee and schedule.

## **Rockville Art League**

### ***Water, Water Everywhere***

**On Exhibit: June 30 – August 30**

Entries for this themed show will be accepted: **May 1 – May 29**.

To enter, you will need to use your same personal link and password that was sent to you when you renewed or joined to enter work in this show. Please read the show call carefully before entering any work. Pay special attention to the schedule. Members may enter up to three (3) pieces for consideration. Any work that is entered May 1 – May 29 will be marked *internally* for this themed show.

We are honored and delighted to welcome back **Therese Capal** who will assign prizes of recognition for this show.

Help us fill the gallery at Glenview this summer with your cool creations! Please see details in the call for entries in this newsletter.

## Virtual Shows, Sales, and Inquiries

Did you know that you can access past RAL virtual shows? Virtual shows are updated and posted to the Rockville Art League website by webmaster Michael Auger. Several of our recent shows are still viewable.

### How to access a past virtual show:

Go to <https://rockvilleartleague.org> and click on the white button for the current virtual show. If you haven't visited the RAL website lately, you will need to refresh. Currently, *The Colorists* show is posted there and in May it will be replaced by the *RAL Juried Members' Spring Show*.

Once you open the current virtual show, click on the word "**Exhibitions**" and you will see the show cards from prior shows. Find the show card of the one you would like to view and click on the name of the show (ex: *Fairweather Artists*, *RAL Juried Members' Winter Show*, and *Portraits: Creatures Great or Small*) right below the show card and you can view that show. You can view it altogether by "**Artwork**" or, if you prefer to see it by *specific artist*, click on the word "**Artist**". (Note: RAL's Artwork Archive account has the capacity to store up to 1000 images of artwork; as new shows are uploaded, the works in past shows are no longer viewable. We do retain records with images of work from past shows.)

**You can inquire or send a purchase request on the piece on the virtual show.** On occasion, we receive inquiries for work in past shows still viewable through our virtual shows. Any inquiries or purchase requests are forwarded to the artist.

### How to inquire about or purchase a piece in a Rockville Art League Show on display at Glenview:

If you are in the gallery at Glenview and you are interested in a piece, click on the **QR code** found right on the label below the work. Instructions are also found in the various rooms of the gallery. It's easy. Just **aim your smartphone at the QR code** and **click on the link** that appears and it will take you to the piece. Once there, you will see the artwork, the medium, dimensions and, if the piece is available, the price. You can click on "Inquire" or "Purchase" if you are interested further. We forward all inquiries or purchase requests to the artist.

If you are at Glenview and forgot your phone or just can't quite figure out a QR code, no worries. Either take a picture of the label or write down the name of the piece and contact either Lisa Sieg ([jshows@rockvilleartleague.org](mailto:jshows@rockvilleartleague.org)) or Patrick Sieg ([president@rockvilleartleague.org](mailto:president@rockvilleartleague.org)). Or go to the RAL website and look for us under contacts.

These shows are beautiful thanks to our talented members.

## MEMBER NEWS



**Lily Kak's** "We the Women: Beacon of Hope" was juried into the exhibit, "Building a Caring Community through Art," at the Priddy Library, Universities at Shady Grove, during April 11-May 10, 2024. Her painting, "Peeping Crocus" was selected for the Spring Show at Windridge Vineyards in Darnestown during March 13-June 9. She will also show her art at the Baltimore Watercolor Signature Artists show at the Village of Friendship Heights Community Center at Chevy Chase during April 8-May 5 and at the 48<sup>th</sup> Annual Art Show of the Women's Club of Chevy Chase on April 12-14, 2024.

MAA has a show at Oasis in Montgomery Mall now through April. **Leslie Kraff** has one painting in that exhibit called YUMMY.



## Cynthia Rivarde Public Reception

9652 Muirkirk Road  
Laurel, MD 20708

Dates: May 11, 2024  
Location: **Montpelier Arts Center**  
Time: 2:00 PM to 4:00 PM  
Price: All Ages

[Visit Website](#)



### Details

Through painting, Cynthia Rivarde explores connections, as well as the disruptions, in nature, people, and time. Drawing from her experiences of living in Florida, California, and then back to Maryland, she has made connections that illustrate the pathways in her collective experiences. Using planes of color, similar to Cezanne or Fairfield Porter, Rivarde paints in layers and linear work that emphasizes gesture and color.

**Cindy Rivarde** is having an art exhibition in April at the Montpelier Art Center in Laurel, MD. It will be in the Library Gallery. [https://www.pgparcs.com/event\\_list/cynthia-rivarde](https://www.pgparcs.com/event_list/cynthia-rivarde)

The exhibition will be April 7 - June 2. She was selected to exhibit by juror Allison Nance, the Managing Director of the Nicholson Project in DC.



Also, Cindy has four pieces accepted at the Meetinghouse Gallery in Columbia, MD for the show “eARTh: How Sustainable is Your Habitat?” This will run April 20 - July 13 with an Opening Reception on June 9th. 5885 Robert Oliver Place, Columbia, MD 21045.





Cindy's work is also included in the show, "Building a Caring Community Through Art," at the Universities of Shady Grove, Priddy Library, 9636 Gudelsky Drive, #3-1200, Rockville, MD 20850. The exhibit features the work of artists from all over Maryland that reflects the challenges facing our community and the cultivation of support, care, and healing for one another. The exhibit ends on May 10.

**Montgomery Art Association** announces its spring festival "Heart of the Vineyard." The festival will feature over 200 artworks and will be held at the stunning Windridge Vineyards property, in the distinctive Wine Production Room. The three-day exhibit, running from Friday, April 26 through Sunday April 28, celebrates the creativity of local artists in a unique setting. Please share with your members and include a listing on your calendar. Learn more: [Montgomery Art Association - Spring Art Festival at Windridge Vineyard - Heart of the Vineyard Show](#)

Hours:

April 26, Friday 1:00pm - 8:00pm

April 27, Saturday 11:00am - 8:00pm

April 28, Sunday 11:00am - 6:00pm

Location:

Windridge Vineyard 15700 Darnestown Road, Darnestown, MD 20874

### **Discount on Custom Framing**


**Jae Shin** has been working as a professional picture framer for 2 decades at the Framers' Workroom located in Tenleytown, DC. Jae offers 15% off on custom framing jobs for RAL members. Please feel




free to contact Jae for any framing jobs. Framers' Workroom, 4431 Wisconsin Ave., NW, Washington DC 20016

202-363-1970. Store hours: Mon-Sat 10:00-5:30. [www.FramersWorkroomDC.com](http://www.FramersWorkroomDC.com)


Email: [Jaeshin@FramersWorkroomDC.com](mailto:Jaeshin@FramersWorkroomDC.com)



**The Compass Atelier**  
*Art classes for beginners and experienced artists  
Special workshops Study Abroad  
Home of the revolutionary Master Artist Program*



TheCompassAtelier.com TheCompassAtelier@gmail.com



**A Work of Art by Debra Halprin**  
**Giclée Printing and Photography Service**  
Create Fine Art Prints of your Artwork  
on Watercolor Paper or Canvas

Mastering the Fine Art of Giclée Printing

**HalprinArt.com**  
301-910-4750

email: [Debra@HalprinArt.com](mailto:Debra@HalprinArt.com)  
in Rockville, Maryland

### NEWSLETTER SUBMISSIONS

Is your art included in a show? Have other news you wish to share with RAL members?

Please send your submissions by the **15<sup>th</sup>** of each month for inclusion in the next newsletter, to:

[newsletter@rockvilleartleague.org](mailto:newsletter@rockvilleartleague.org)

<b>Glenview Mansion Schedule</b>				
<b>2024</b>				
<b>Exhibition Dates:</b>	<b>ARTISTS</b>	<b>Delivery of Artwork 10am-1pm</b>	<b>Meet the Artists Opening Event</b>	<b>Pick-up Artwork 10am-1pm</b>
APR 14- MAY 10	Glenview Exhibit: Gaithersburg Camera Club <i>Up, Down, and All Around</i>	MONDAY, April 8 10:00am- 1:00pm	Sunday, April 14 1:30-3:30pm	MONDAY, May 13 10:00am-1:00pm
May 19-June 21	<i>Rockville Art League Juried Members' Spring Show</i>	TUESDAY, May 14 10:00am- 1:00pm	Sunday, May 19 1:30-3:30pm Awards at 2:00pm	TUESDAY, June 25 10:00am-1:00pm
June 30- Sept. 3	RAL Themed Show <i>Water, Water Everywhere</i>	TUESDAY, June 25 10:00am- 1:00pm	Sunday, June 30 1:30-3:30pm	TUESDAY, Sept. 3 10:00am-1:00pm

Artists displaying their work in the gallery at Glenview Mansion will be contacted with detailed information about their shows, including the required show agreement. Labels and support to hang the show will be provided. The RAL shows are virtual on our website as well as in person at Glenview.

*Meet the Artists* opening events are free and open to the public. Plenty of parking and there is an elevator to all levels of the gallery. The art gallery is open weekdays Monday-Friday, 9am-4:30pm. Closed on official city holidays. Please check Glenview Mansion website: <https://www.rockvillemd.gov/389/Glenview-Mansion> or call 240-314-8681 or 240-314-8660 before visiting. Glenview Mansion is located at Rockville Civic Center Park, 603 Edmonston Dr.

Thank you for supporting the arts and your fellow artists!



## RAL BOARD OF DIRECTORS

<b>Name</b>	<b>Position</b>	<b>E-mail</b>
Patrick Sieg	<i>President</i>	<a href="mailto:president@rockvilleartleague.org">president@rockvilleartleague.org</a>
Vacant	<i>President Elect</i>	<a href="mailto:president@rockvilleartleague.org">president@rockvilleartleague.org</a>
Lisa Sieg	<i>Vice President/ Exhibits Coordinator</i>	<a href="mailto:jshows@rockvilleartleague.org">jshows@rockvilleartleague.org</a>
Richard Fisher Sarah Sohraby	<i>Program Coordinators</i>	<a href="mailto:programs@rockvilleartleague.org">programs@rockvilleartleague.org</a>
Lisa Sieg	<i>Volunteer Coordinator</i>	<a href="mailto:volunteer@rockvilleartleague.org">volunteer@rockvilleartleague.org</a>
Vacant	<i>Membership Coordinator</i>	<a href="mailto:membership@rockvilleartleague.org">membership@rockvilleartleague.org</a>
Rob Gale	<i>Treasurer</i>	<a href="mailto:treasurer@rockvilleartleague.org">treasurer@rockvilleartleague.org</a>
Cathy McDermott	<i>Secretary</i>	<a href="mailto:secretary@rockvilleartleague.org">secretary@rockvilleartleague.org</a>
Susan Dunnell	<i>Newsletter Editor</i>	<a href="mailto:newsletter@rockvilleartleague.org">newsletter@rockvilleartleague.org</a>
Liliane Blom	<i>Liaison Officer</i>	<a href="mailto:liaison@rockvilleartleague.org">liaison@rockvilleartleague.org</a>
Dave Allen	<i>Publicity/marketing</i>	<a href="mailto:publicity@rockvilleartleague.org">publicity@rockvilleartleague.org</a>
Helen Wood	<i>Communications</i>	<a href="mailto:communications@rockvilleartleague.org">communications@rockvilleartleague.org</a>
Vacant	<i>Hospitality</i>	<a href="mailto:hospitality@rockvilleartleague.org">hospitality@rockvilleartleague.org</a>
Diane Jeang	<i>Member Shows</i>	<a href="mailto:mshows@rockvilleartleague.org">mshows@rockvilleartleague.org</a>
Michael Auger	<i>Webmaster</i>	<a href="mailto:webmaster@rockvilleartleague.org">webmaster@rockvilleartleague.org</a>
Eileen Mader	<i>Founder</i>	

Rockville Art League  
P.O. Box 4026  
Rockville, MD 20850

