

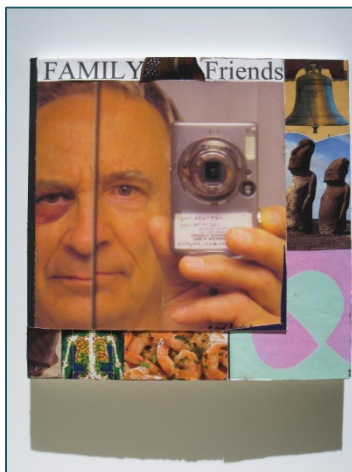


RockvilleArtLeague.org Vol. XXIV No. 6 February 2015

NEXT MEETING: FEBRUARY 5th, 6:30PM
GLEN KESSLER, SPEAKER – Writing the Artist’s Statement

Message from the President Fred Ruckdeschel

Dear fellow artists and art lovers,



January is a quiet for me, compared with the past few. The snow right now remains beautiful, helps me avoid working outside in my garden, and thus provides time for organizing my studio but not emptying it out.

I look forward to our February members’ meeting with Glen Kessler, who will discuss artists’ statements. Even if you don’t need one now, you may benefit from getting a head start. I had to write one once when asked at the last minute to show some work. Even though I did not use my former drafts, having thought about a statement earlier helped greatly to write a new, up-to-date one. Besides, each of us might learn more about ourselves, especially as an artist or while working on art projects.

That was an interesting experience for me. Often we go about our “business” without thinking at all deeply about what is motivating us, or about what we actually get out of producing our art, or even of showing it.

Speaking of shows, I am already looking forward to RAL’s May show. Each one, since I became a member of RAL, has been a pleasure in general, and some works I still remember well. I also have enjoyed helping Marian MacKerer put on the shows. This last show, however, I was too busy with personal activities to help out; but I did miss doing so and working with the other volunteers.

And let’s not forget to visit the splendid museums in DC. I have tended to see only shows. But my unfulfilled plan for several years has been to spend time in the permanent collections. I was reminded again of that when critiquing work recently with some fellow students from last fall. One remarked about her surprise as she wended her way through the National Gallery to see Degas’s sculpture of the little dancer, which was featured in a show of related works, “Why there is the wonderful collection of Impressionist paintings. I’d forgotten all about them.” I understand.

I especially like, but don't see often enough, the American collection of the late 1800s and early 1900s. It is wonderful.

And then there is my favorite painting at the National Gallery, Raphael's exquisite *Alba Madonna*.



I always admire the beauty and power of Raphael's image. Also, I remain continually surprised that I am still captured by it, after 50 years, despite my always being a contemporary artist and having meager knowledge of the Christian symbolism of that era.

Fred Ruckdeschel – President, RAL

MEMBERSHIP DUES – \$40 Now

Dues are \$40 (includes a late fee of \$5.00 after Oct. 31). Thanks! *Susan*



February's Speaker: Glen Kessler, "Writing the Artist Statement."

The Topic for RAL's February's meeting is **writing the artist statement**. And our lecturer is the ever popular: Glen Kessler. Come join us at the February meeting and find out what you've been doing right...or wrong, and what you could be doing better to write a more compelling artist statement and make it less painful. To find out more about Glen, please visit: www.glenkessler.com

RAL members are encouraged to e-mail their artist statements, before January 21, to Glenn Kessler at: glenkesslerart@gmail.com. These would be statements that people would like to have discussed in public at the next meeting. A link to the artist's images should also be provided, or a few JPEGs of the images reflected in the artist's statement should also be included for context.

REMINDER: GLENVIEW MANSION STUDENT ART SHOW

One of my favorite events is coming up, which is the Student Art Show at Glenview Mansion. Students K-12 who live or attend school in Rockville will be bringing their fabulous artwork to display at the Glenview Gallery in March. RAL members have historically supported this great community event by helping with registration. This year art will be delivered Sunday Feb. 15 from 1:30-3:30PM. Please let me know if you are available to help! –emily pearce (ekepearce@gmail.com)

Student Art Show Details:

Art Delivery: Sunday, Feb 15, 1:30-3:30pm

Opening Reception: Sunday, Feb 22, 1:30-3:30pm

**Art pickup: Thursday, March 5, 5-7pm;
Friday, March 6, 2-5pm**

A Message from Emily Pearce, Chair of the RAL Members Show Committee:

Dear RAL Members,

I hope this message finds you well, enjoying a productive winter, or at least cozy somewhere. This is a note of thanks and also a renewed request for your participation to insure that RAL members continue to have opportunities to exhibit their work at Glenview Mansion and other venues.

First, thank you to several people who have responded to the call for committee members for the Members Show Committee and the Outside Show Committee. As it stands, we now have four people on the Members Show Committee and three interested in serving on the Outside Show Committee.

Now the request: I would still like at least two more people to volunteer to be on the Members Show Committee. Please consider joining the Members Show Committee even if you cannot be physically present to help with registration or hang the show. There are many jobs behind the scenes that can be done from home and we would love your help! We will start preparing in March for the May show, so please let me know before May if you are interested in joining.

Also, we need a volunteer to chair the Outside Show Committee. The purpose of this committee is to find venues for Rockville Art League members to show their work outside of our arrangement with Glenview Mansion. Members have had access to wonderful spaces, such as Brookside Gardens and the Pepco Gallery, and we want to keep those opportunities coming but we need your help. Our Outside Show Committee cannot run without a volunteer to be its chair. Finally, this is a fun job! You get a nice excuse to visit local arts venues, you can feel good about extending opportunities to your fellow RAL

artists, and you can also get ideas about where to submit your own artwork.

If you think you might be interested in either of these committees you can find out more by reading the details below. I will be happy to answer any questions you have. I hope you will consider getting involved!

1) Join the RAL Show Committee:

RAL has been fortunate, for the last several years, to have had Marian MacKerer who handled all the aspects of coordinating shows. This is a huge task for one person! Marian is leaving RAL and moving to North Carolina so we are trying to make show coordinating more manageable and more sustainable by sharing the responsibility in a committee. **We need several more committee members who can help organize the show**, including individuals willing to step in if a lead organizer cannot perform his or her duties due to an emergency, illness, or other circumstance. Show committee members are not required to attend RAL Board Meetings and there are not regular in-person meetings to attend. The following will you an idea of things we do:

- Before the show: begin planning the show three months before and take care of behind-the-scenes work, including judge selection, newsletter submissions, creating materials and spreadsheets to help with registration, and contacting volunteers; and
- During the show: help set up and/or take down volunteer spaces for registration, judging, and hanging, write ribbons, create program, print winner certificates, serve as final check for accuracy and quality of show presentation.

Please consider joining us!

2) Serve as member of the Outside Show Committee:

RAL members have enjoyed the opportunity to show their art at venues other than Glenview Mansion, including Brookside Gardens and the Pepco Gallery. These outside shows cannot continue until we have a group of committed volunteers willing to take charge of this program. We are looking for volunteers to serve on and/or chair this committee. Volunteers will:

- Investigate exhibition venues in Montgomery County and surrounding areas and make recommendations to the RAL Board (attend shows, find exhibition requirements, etc.);
- Request and organize volunteers to handle drop-off, hanging, and pick-up for the shows; and
- Help organize show openings and/or advertisements for the show.

If you are interested in one or more of these volunteer opportunities please let me know!

Sincerely,

Emily Pearce
ekepearce@gmail.com

Critique by Penny Kritt

The Beauty of Brown

You can still have *your* work critiqued! Send an image to me at pennykritt@aol.com.

Are you bored with using the same old brown colors squeezed right out of a tube? If so, let's look at some make-your-own options. There's no color easier to make. No more out-of-the-tube boring sienna or umber browns ever again!

Making Brown:

There's nothing easier to make than brown! It's a combination of all three primary colors (red, yellow

and blue). By changing the ratios of the primaries, you get many different versions of brown.

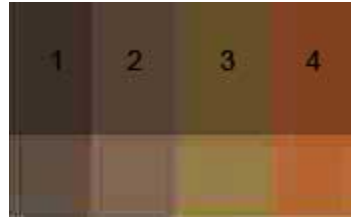


Figure 1

In Figure 1 above, both Colors 1 and 2 have blue as the biggest component, although Color 2 has less blue than Color 1. Color 3 has a higher percentage of yellow and Color 4 has a higher red component. The lower half of each color is like adding water to the mixture of watercolor paints or white to oils and acrylics.

Artists are always asking for "color recipes", a fool-proof way to reproduce a particular shade. Recipes often don't work because you may not have a particular color on your palette. Or your tube was from a different manufacturer, and even though the name is the same on each tube, the colors are definitely not!



Figure 2

It's much easier to just look at the colors above in Figure 2 and estimate the percentage of each of the primaries. For example, in swatch 1, the final color is about 80% blue, 15% red and 5% yellow. Swatch 2 has more red, so maybe it's about 45% blue, 40% red and 15% yellow. Swatch 3 has less blue and more yellow, so let's say it's 10% blue, 30% red and 60% yellow.

As you calculate percentages to make your colors, remember that virtually every color on your palette is a secondary or a tertiary (all three primaries). For example, French ultramarine blue is mostly blue with some red. Alizarin crimson is a red with some blue. Cerulean is a blue with yellow. Earth tones like indigo, ochre, and Indian red are tertiaries, leaning toward blue, yellow and red respectively. Just plan accordingly since the paints you mix will have a varying degree of each primary.

Now you know why your painting rinse water is almost always eventually brown!

Tip:

Whenever you watercolorists need a cream color, you can just use that rinse water we talked about above! Cream is just a “watered down” version of brown. If you work with acrylics or oils, consider using buff titanium instead of adding titanium or mixing white. It will prevent that chalky look because buff titanium is already a tertiary.

Using Brown:

Dark and light browns, red browns, blue browns and yellow browns – the choices are endless. And that might seem a little overwhelming. So here are some ideas of when to use which one.

Have you ever struggled with composition that is mostly brown? Maybe an old sailing ship, or a still life with an oak bucket on an old wooden table? No matter what you tried, it just didn't work?

The problem is two-fold. First, there isn't much contrast to work with because all that brown is pretty similar and all browns are tertiaries. And I bet all your browns were mostly made of blue.

The top set of logs in *Figure 3* below is how most people paint logs, furniture, ships or anything that's mostly brown. But look at how the redder log in the bottom version stands out. It's because the human eye is naturally drawn to red. What was a boring pile of logs now has some contrast that makes it much more interesting.

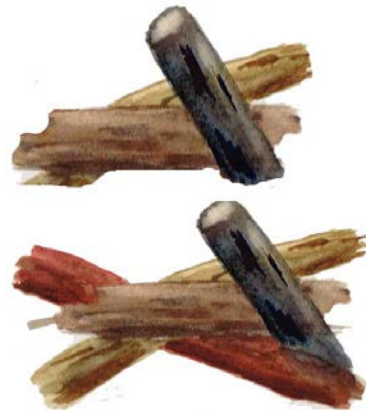


Figure 3

Another reason that compositions that are mostly brown don't work is because most browns are mid tones.

I converted the logs at the bottom of *Figure 3* above to black and white so you could see how similar they are in value. In *Figure 4* below, the red log seems to disappear, because it's a mid tone like all the others! So in the bottom half of *Figure 4*, I added some value contrast. In the center horizontal log, now there's a lighter value across the top and a much darker one on its underside. I even used a little dark to make some lines for bark. It didn't do much, but there's a little more to catch the viewer's eye.



Figure 4

So the next time you tackle a composition that's a symphony of brown, choose wisely. If you need a lighter value for an area, use maple, a wood that's

mostly yellow. If you need a dark area, a dark walnut works well. And if all you've got to work with is brown wood and mid tones, choose an occasional splashy red rosewood or a purple mahogany to create a center of interest.

Tip:

If portraits are your passion, use the information above to make any kind of skin tone you want. Maple works for Caucasians. Asians tend to have more yellow in their complexion, so start with a yellow oak. Hispanic skin is redder, more like rosewood. And for a Nigerian, go for walnut and use the purple mahogany for fabulous highlights on the cheekbones.

If you would like a critique, please email a photo to me at pennykritt@aol.com. Perhaps your work will be chosen for the next issue.

**For classes or private lessons, contact Penny at
301/989-1799
©Penny Kritt 2013**

MEMBER NEWS



Patricia Zannie's collage, "Aspen Trees," was juried into the 24th Annual Strathmore Artists Juried Exhibit: "What's on Your Mind?" from

January 10 through March 1, 2015 at the Strathmore Mansion in North Bethesda. Her collage, "Spring No. 4," is on exhibition at the Community Arts of Montgomery College Faculty Exhibit until January 30, 2015, at the Cafritz Foundation Arts Center, 930 King Street, Silver Spring, MD. Patricia also has collages in the Montgomery County Art Association Gallery's January Member Show at Westfield Wheaton Mall and at the Circle Gallery Winter Member Show in Annapolis, MD.

ENCAUSTIC MONOTYPES ART TALK

Jorge Bernal will present an encaustic monotypes art talk at the UUCR January 28th at 7:30 pm in Founders Hall 100 Welsh Park Drive, Rockville, MD. Following the talk, there will be a hands-on demonstration. Please join us!



jorgeluisbernal@gmail.com/301-821-3999

Do you have an upcoming show? Or an event that RAL members might enjoy attending? Please send an email to the newsletter editor! dunnz@erols.com.

ART CLASSES

REBEL AMERICAN ARTISTS



Pat Zannie will be teaching the class, “Rebel American Artists,” in Spring 2015.

Please check

website: <http://cms.montgomerycollege.edu/communityarts>

Explore the stylistic innovations of American artists who developed powerful techniques to interpret and depict modern life in ways distinctive from their European counterparts! Encounter the dynamism and novelty of American culture as expressed by American artists: local jazz dance halls and bars in the Harlem Renaissance; the drizzles of Pollack; the slashes of Willem De Kooning; the minimalism of Franz Kline; the abstract expressionism of Robert Motherwell; the color fields of Rothko; the found art assemblages of Rauschenberg; and the pop art of Jasper Johns and Andy Warhol. See how New York replaced Paris as the center of modern

art. Using the technique of collage you will develop your own artwork inspired by these legendary American Artists. Tuition waiver applies; seniors pay fee only.


Course ADS383 25 hrs. \$200 + \$100 fee = \$300; Non-MD residents add \$160

Takoma Park/Silver Spring Campus; CRN# 35382; 10 Sessions: 2/17-4/28; Tuesday 9:30 - 12:00; CF234 No class 3/17

Nadia Azumi, local chapter president of Silk Painters International for MD, VA, and DC, holds meetings, workshops and classes in silk painting at her residence in Rockville. For more information please contact her at: nadia@nadiasilk.com

ART HAPPENINGS

THE POTTERS GUILD OF ANNAPOLIS PRESENTS A WORKSHOP WITH
SUZE LINDSAY



Transcending the Utilitarian in Ceramics

Friday evening Slide Show--March 20, 2015, 7:00 FREE TO THE PUBLIC
Saturday Workshop- March 21, 2015, 9:30-4:00 pm
Coffee at 9:00 am on Saturday morning
Maryland Hall for Creative Arts
801 Chase Street
Annapolis, MD 21401

Fee: \$55 PGA members & MD Hall students /non-members \$80.00
Space limited : Register Early : Deadline March 6, 2015
Cost of workshop increases \$25.00 after registration deadline
Contact information: John McClure, john_d_mcclure@yahoo.com
Charge cards accepted, contact John
For Guild information go to The Potters Guild of Annapolis Facebook page
To view more of Suze's work and biography, go to www.forkmountainpottery.net

TO ALL RAL POTTERS,

As President of The Potters Guild of Annapolis, I am proud to announce that we will be having Suze Lindsay for our Visiting Artist Workshop Series this March. This will be an exciting event as we will be including

a Friday night slideshow and the opportunity to hear Suze discuss her work and life in her beautiful country studio. Registration is now open, see the flyer above for all information. The Friday night slideshow is free to the public, so you may bring a guest, but please let us know so we can accommodate seating. Coffee will be served on Sat. morning before the workshop, and lunch can be ordered at the cafe on the premises, or you can bring a bag lunch. Register early, there is a deadline. All information is on the attached flyer and you can send your questions to: John McClure, john_d_mcclure@yahoo.com as well as your registration.

ART OPPORTUNITIES

Ready to have your own art space in 2015?
Tour the artists' studios at Washington ArtWorks
12276 Wilkins Ave. Rockville
Saturday, January 24th at 1pm



Can't make it?
Don't worry.

Just give us a call to set up a private tour
301.654.1998 or e-mail Maryjo@WashingtonArtWorks.com

Tour the Studios
Make the Leap

UNJURIED

CALL FOR ART!

Le Salon at TAG in February 2015

TAG/The Artists Gallery will host its annual unjuried show in February. "Le Salon at TAG 2015" will be held at the gallery's new location, 216 N. Market Street, from Feb. 6 through 28, with an opening reception on First Saturday, Feb. 7, from 3 to 9pm.

This is an excellent opportunity for all artists, aspiring and professional, to exhibit with a gallery that is celebrating its 25th anniversary.

- All art submitted to Le Salon must be original; reproductions will not be accepted.
- All media may be entered including drawing, painting, photography, sculpture and printmaking. Two-dimensional pieces may be no larger than 30 by 30 inches (including the frame) and must be ready to hang.
- Three-dimensional pieces must fit a 15 inch square pedestal.

A new feature offered this year is entry online. Go to theartistsgalleryfrederick.com, click on "Exhibitions" and then "Salon Show" or on the Salon Show box on the home page. When you fill out the online application, and click "submit," a copy of your application will be sent both to TAG and to you.

- The entry fee is \$25 for one piece and \$10 each for a second and third piece.
- Gallery commission is 30% of the sale price. Be sure to include the commission in your price.
- Le Salon is a cash-and-carry exhibit.
- Art should be brought to the gallery on Sunday, Feb. 1 from noon to 5pm or on Monday, Feb 2 from 3 to 7pm.

- All unsold work must be picked up on Sun., March 1 from noon to 5 or March 2 from 3 to 7pm.

More information and guidelines are posted at theartistsgalleryfrederick.com.

Delaplaine Visual Art Education Center Call for Entries. The Delaplaine Visual Art Education Center is scheduling solo and small group exhibit opportunities for 2014-2015 in five galleries housed in a historic art center in downtown Frederick. Open to all media.
https://www.delaplaine.org/site/?utm_source=PROJECTOR+6-27-13&utm_campaign=Projector&utm_medium=email

Eligibility: Open; **Deadline:** Ongoing
Entry Fee: \$30 fee for non-members

Northern Virginia Art Center's new Specials Exhibitions space. The Northern Virginia Art Center is searching for talented professional artists with a cohesive body of work to exhibit in their new Special Exhibitions space in the heart of Crystal City's thriving restaurant district. 380 square feet of gleaming exhibition space available for monthly exhibits of 2D or 3D art! Their full time gallery staff will assist in exhibit installation, process sales of your work, and will coordinate your opening reception, all for a small fee and low sales commission.

Eligibility: Open; **Deadline:** Ongoing
Entry Fee: N/A

http://novaartcenter.org/our-mission/show-opportunities/?utm_source=PROJECTOR%206-27-13&utm_campaign=Projector&utm_medium=email

Rockville Innovation Center Call for Entries

Rockville Innovation Center is interested in showcasing the work of local artists in their gorgeous location. The RIC is looking to fill its beautiful space with artwork by metro area artists and photographers.

<http://www.visartsatrockville.org/call-for-entries/feast>

Eligibility: Open; **Deadline:** Ongoing
Entry Fee: N/A

Montpelier Arts Center. Artists interested in exhibiting in the Main Gallery or curators who want to propose an exhibition should send a one page proposal, resume(s), and a CD of no fewer than 20 images to Main Gallery, Montpelier Arts Center, 9652 Muirkirk Road, Laurel, MD 20708.

http://arts.pgparcs.com/Community_Arts_Services/Artist_Resources.htm?utm_source=PROJECTOR+6-27-13&utm_campaign=Projector&utm_medium=email

Eligibility: Open; **Deadline:** Ongoing
Entry Fee: N/A

DC Photo Grid. The DC Photo Grid is an aggregated map of the city generated from user-submitted photographs, and the DC Crowd-Sourced Video Project offers a constantly looping portrait of the city as viewed by its inhabitants.

http://www.dcphtogrid.com/?utm_source=PROJECTOR+6-27-13&utm_campaign=Projector&utm_medium=email

Eligibility: Open; **Deadline:** Ongoing/**Entry Fee:** N/A

GLENVIEW MANSION CONFERENCE ROOM SHOWS

You can show your artwork in Glenview Mansion for one month if you have received a 1st, 2nd, 3rd or honorable mention award in an RAL juried show. Starting in 2013, artists may have both rooms to exhibit in if a second artist doesn't sign up for the same month within two months of the show's start date; otherwise they will have one room. The receptions at Glenview mansion are 1:30-3:30 pm, on the Sunday after hanging! Preferred drop-off and pick-up times for Glenview Shows are from 9 am to 12 noon. Note: please contact the mansion management ahead of time if you wish to modify the drop-off or pick-up times.

For artwork delivery at the Glenview Mansion, please be prepared to unwrap your work and take the wrappings with you - there is no room to store packing materials at the Mansion. Please bring pliers (needle nose are easy to work with). There is no one to help move artwork from your vehicle to the conference rooms, however, you may use the hand truck that is at the Mansion. You are responsible for hanging your own artwork with help from the Mansion staff. If you have not made labels for your work, please fill out the RAL cards that will be available when you bring your work to the conference room. If you print your own, they should be on card stock. Please do not use the sticky Avery labels, unless you adhere them to foam core or card stock.

If you are unavailable on the appropriate date for pickup, please arrange with someone to pickup for you. There is no room to store your artwork at the Mansion after it comes down.

Drop off/pickups are Mondays (unless **Monday** is a holiday).

Thanks - please contact Julie Farrell, Arts Programs Specialist at Glenview, with any questions. jfarrell@rockvillemd.gov.

If you need to contact Julie Farrell, please send an email to jfarrell@rockvillemd.gov Please be aware that is no staff at the mansion available to help you move your artwork into the conference rooms and if you need assistance, you need to assist yourself! Or ask a friend to help you, or contact Julie about hiring a mover.

Monday delivery and hanging: 9AM–12PM

Sunday Gallery Opening: 1:30—3:30PM

Wednesday Pickup: 9AM—12PM

Feb. 2015: Jorge Bernal (2)

Mar. 2015: Student Art Show

Apr. 2015: Vatsala Menon & Natalya Parris

May 2015: RAL Members' Spring Show

June 2015: Board Members' Show

July 2015: Diane Jeang (2)

Aug. 2015: Joanie Grosfield & Cuba Riesi

Sep. 2015: Jackie Austin (2)

Oct. 2015: Eric Goss (2)

Nov. 2015: Emily Pearce & Regina Price

Dec. 2015: RAL Winter Show
Jan. 2016: Sabiho Iqbal
Feb. 2016: Carlos Garcia (2)
Mar. 2016: Student Art Show
Apr. 2016:
May 2016: RAL Spring Show
June 2016: Board Members' Show

Glenview/Open Show Coordinator: Diane Jeang, (301) 871-1589 E-mail: swinedoc@yahoo.com

RAL ONGOING SHOW LIST

Bank of America - 3200 Sandy Spring Road, Olney, Maryland
10-12 paintings, Contact: (301) 232-1370

Twinbrook Library - 202 Meadow Hall Drive, Rockville, Maryland
Shows are now 1 month in length. 5 medium to large paintings, Contact person: Chris Lindy
(240)-777-0240, christinelundy@montgomerycountymd.gov

Rockville Community Services Office - 30 Courthouse Square Rockville, Maryland
10-12 medium to large paintings, Contact person: Carlos Aparicio (240) 314-8303

Thomas Farm Community Center – 700 Falls Grove Drive, Rockville, Maryland
12-16 medium to large paintings, Contact person: Martha Coester (240) 314-8842

Marilyn J. Praisner Library – 14910 Old Columbia Road, Burtonsville, Maryland
10 small to medium or 5-6 large paintings (10 hanging chains), Contact person: Vera Ramaty (240)
773-9455

RAL BOARD OF DIRECTORS

<u>Position</u>	<u>Name</u>	<u>Phone</u>	<u>e-mail</u>
President:	Fred Ruckdeschel	301-320-3911	fred.ruckdeschel.and.art@gmail.com
1st VP:	VACANT		
Treasurer	Patricia Zannie	301-962-8581	patriciacollages@yahoo.com
Secretary	Emily Pearce	919-699-2547	ekepearce@gmail.com
Membership	Susan Dunnell	301-949-1514	dunnz@erols.com
RAL Juried Show Coordinator	Emily Pearce	919-699-2547	ekepearce@gmail.com
Publicity/mkt.	VACANT		
Newsletter editor	Susan Dunnell	301-949-1514	dunnz@erols.com
Program coordinator	Liliane Blom	301-518-5312	lilianeblom@aol.com
Communications	Eric Goss	301-956-3099	edg16@hotmail.com
Open shows	Diane Jeang	301-871-1589	swinedoc@yahoo.com
Glenview member shows	Diane Jeang	301-871-1589	swinedoc@yahoo.com
Hospitality	Martha Campos	301-251-0643	ximenace@verizon.net
Historian	Patria Baranski	301-424-6193	
Web master	Michael Auger	202-670-2789	RAL@arty4ever.com
Founder, Hon. lifetime member	Eileen Mader	301-762-6458	

