



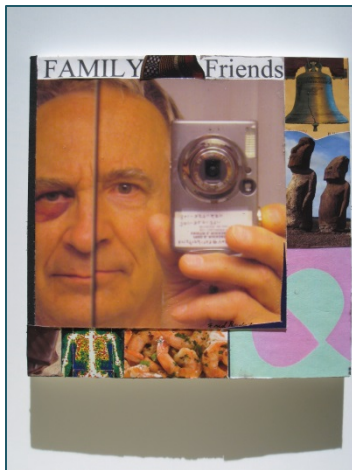
RockvilleArtLeague.org Vol. XXIII No. 10 June 2014

**NEXT MEETING – JUNE 5th, 6:30 PM**  
**No Speaker: Potluck Dinner with PRIZES**

## **MESSAGE FROM THE PRESIDENT**

### **FRED RUCKDESCHEL**

Dear fellow artists and art lovers,



I begin by urging and encouraging each of you to submit pdfs of work you would like included in the two shows this fall that are not at the Glenview Mansion. The deadline is June 15, so there is time to take

photos or have a friend do it for you and submit digital pdf files by email. See the details in this month's newsletter.

Moving on, I note that RAL ends this 2013-14 season in reasonable fiscal condition. There is money in the bank. More importantly, we have two new board members, each of whom brings new ideas and new energy. It also has, as many know, a new president, **me**. And I'd like to note just a few things.

First, I am delighted that the other board members are also devoted to RAL. But each of us has many other responsibilities and other priorities. Hence, if RAL is to thrive, if we members are to get the most out of RAL, more volunteers will need to join in the camaraderie and fun, which we who are already volunteering do enjoy.

Foremost, we need several members to run RAL shows. Marian Mackerer has all the procedures written down. There is no wheel to invent. Besides, no one need organize and run them all. Each show could be run by a different person. How about volunteering? Marian will be in the area for another year and will help guide all organizers. Each year there are the two members' shows and one for school kids in the City of Rockville.

Second, a subcommittee initiated and headed by Emily Pearce, a new member and RAL's new secretary, has some proposals for the board to consider. The committee is interested in ideas that will increase members' participation in RAL activities. If you are eager for RAL to organize any particular activity, please let Emily or me know or another board member who is your friend or friendly acquaintance.

Our goal is to figure out activities you personally will enjoy participating in – either because they are fun or educational or just interesting or all three. Our second goal is to have membership and participation in RAL attractive to more new members, especially ones who are on the younger side or have loads of energy despite age. We are fortunate to have some of each on the board – young, old, and in the middle.

In closing, one final remark. Over twenty years ago, I was president of an artist guild that was rapidly dying because members were either too busy or lacked the desire to pitch in owing to advanced age or to insufficient to continue volunteering. Everyone seemed to look to me to organize the guild's activities. Well, I could not do it all. Eventually a few members took things into their own hands and organized a few workshops. But the group basically died, although one good soul kept in touch with everyone every once in a while.

A year or two ago, however, the guild came alive again. At a reorganizational meeting, there were about 30 of us. At least half I had neither met nor had heard their names before. Once again the guild is functioning. But that was, as I have indicated, after roughly 20 years of complete dormancy. That's a long time to be without an organization that provides contacts, educational opportunities, member shows, and friendship linked to our common, creative artistic interests.

I hope the coming years that your Rockville Art League continues to thrive for the benefit of all of us and of new members drawn from the Washington, D.C., area.

Looking forward to seeing you on June 5th!

Fred Ruckdeschel – President, RAL

## JUNE Meeting – Potluck Dinner with Prizes



RAL will provide drinks: wine, beer and soda. Members should bring original dishes—there will be **prizes** for dishes (most creative, most impressionist, we'll just make up the categories as we go along) including a free year membership and gift certificates from Plaza. So *please* come join us—let's all have a jolly good dinner time together!

We will also have a swap table—art books and supplies to swap or take.

## RAL Juried Member Art Show Glenview Mansion May 4 – 26, 2014

**Best in Show:** Liliane Blom: *Her Majestic Spring Attire*

### Oils and Acrylics:

1<sup>st</sup> Robert LeMar: *Kitchen Table*  
2<sup>nd</sup> Sabiha Iqbal: *Reflection*

- 3<sup>rd</sup> Leslie Kraff: *Brothers*  
HM Linda Greigg: *No Plum Wine*  
HM Robert LeMar: *The Front Hall*  
HM Marian MacKerer: *Bottle Tops*

**All Watercolors:**

- 1<sup>st</sup> Karen Norman: *Stirrings*  
2<sup>nd</sup> Marita Gebhardt: *Transition*  
3<sup>rd</sup> Sue Moses: *Circle Manor*  
HM Marita Gebhardt: *Night Reflections*  
HM Sue Moses: *Plein Air Painting*  
HM Sara Sittig: *Dreamer*

**Pastels, Drawings, and Hand Pulled Prints:**

- 1<sup>st</sup> Noble: *Renee*  
2<sup>nd</sup> Renata Vaccari: *Midnight Sunset*  
3<sup>rd</sup> Roxanne Schulman: *The Hudson at North Creek*  
HM Naomi Kaffee: *Reclining Nude - Charcoal*  
HM Muriel Ebitz: *Iris*

**Mixed Media, Collage, Experimental, and Original Computer Generated Art:**

- 1<sup>st</sup> Cathy McDermott: *The Last Scoop*  
2<sup>nd</sup> Patricia Zannie: *Cluster of Saguaro*  
3<sup>rd</sup> Elizabeth Steel: *Another Point of View*  
HM Merry Lymn: *Red Room*  
HM Carroll Saussy: *Rectangles*

**Sculpture and Ceramics:**

- 1<sup>st</sup> Frances Lederer: *The Job Series #1*  
2<sup>nd</sup> Lois Levitan: *African Mask*  
3<sup>rd</sup> Lois Levitan: *Grandma's Treasure*  
HM Ingrid Barnes: *Raku Vase*  
HM Frances Lederer: *The Job Series # 2*

Congratulations to all!

A total of 137 pieces were registered and 97 were accepted. Thank you to the 23 volunteers who made this show a success. We couldn't do this without the member support and hard work! If you received an award but were unable to attend the ceremony please come to

the June meeting where we will distribute them.

Don't forget FINAL PICK-UP is Tuesday, May 27, from Noon to 2:00 and 5:00 to 7:00 PM. Please make arrangements to have your work picked up if you are out of town. Artwork is not insured after the final pick up. If you have any questions or concerns, please call 301-590-9437 or email at [mackerer@comcast.net](mailto:mackerer@comcast.net).

Thank you, Marian MacKerer

**Notes on Fascinating Saturday (May 17) Workshop...with Pat Zannie**



On May 17, RAL members attended a free workshop (paid by the League) given by Pat Zannie on collage. She gave a fascinating lecture on the influence of the art of the Edo period in Japan (1630-1880 -- block prints) on the post impressionists -- Degas, Van Gogh, Gauguin, Cezanne & Picasso, and others. She described the basic tenants of Edo art -- flat: negative space as “active” and as important as positive: implied images: subjects from daily life of all classes of people; cropping; etc. Then tips on designing and making a collage -- two stage process, intuitive then rational assessment and thought-out or intuitive modifications until it “works”; materials, etc.; and then some tips on enhancing creativity -- not judging work or self, not knowing what



project will look like, trusting intuition. Then, an hour or so of participants creating collages, using packets of identical materials provided to each participant, magazines for other images, and extra papers. Each member brought their own paper cement and scissors and other stuff like pens, tweezers, crayons, etc. The end of the workshop was a critique of what Pat likes in each piece and comments from participants about what they like and, if they have an idea, what participant might have done differently. For those of you who did not attend, you really missed a happening! This workshop was free and so much fun!!! I strongly encourage you to attend one of Pat's classes—you will treasure the time spent with her. Details on her summer class are included in this newsletter.



Editor's note: I've included a snapshot of my collage (below) to give you an idea of what members created.



## Call for Rockville Art League Members

**Brookside Gardens**

**September 22 – November 3, 2014**

**Deadline: June 15, 2014 for entries**

Location: 1800 Glenallan Avenue  
Wheaton, MD 20902

RAL members are invited to exhibit at Brookside Gardens from September 22 to November 3, 2014. Only 2-D media with a nature-related theme will be accepted for jurying by the RAL board. No sculptures for this venue. All artwork is for sale with Brookside taking 25% commission.

**Eligibility and Rules:** Artist must be a RAL member with current dues paid in September 2014. Works must be framed or gallery wrapped (sides must be painted) and ready to hang with hanging wire. Maximum size is 42" x 42." All artwork must have a nature-related theme. All 2-D media will be accepted for jurying by the RAL board. There is no restriction on age of artwork or having been exhibited in any member show. A \$5.00 entry fee will be collected from accepted artists only.

Send up to 10 images to: [vp@rockvilleartleague.org](mailto:vp@rockvilleartleague.org) by **Sunday, June 15, 2014**. Depending on the amount of artwork submitted will determine how many pieces selected. The board will try to be as inclusive as possible. **All emails should have "Brookside show" in the subject line.** Images should be submitted in jpeg format only. Please rename your jpeg to include last name, title, and size, for example, LastnameTitle16x20.jpeg. We will need this info to jury properly. You will be notified by July 13, or sooner, which images have been selected. At that time we will ask for the entry fee.

Giclée prints or original artwork will also be accepted for the bin. All bin work, between the sizes of 11” X 14” and 16” X 20,” should have a backing and be in a clear bag enclosure (these may be found at clearbags.com or Plaza Art). The bin will hold up to 30 prints. This total will be divided up between the numbers of exhibiting artists.

**Delivery** is Monday, September 22, 2014 at 10:00AM and Pick up is Monday, November 3, 2014 at 9:00AM. Parking lot repairs will be going on at this time so we will keep you informed as to where to load and unload your artwork.

**Sales:** Brookside Gardens will receive a 25% commission on any sales made during the exhibit or for a 6 month period after the exhibit. Brookside Gardens relies upon the Artist to submit the 25% commission on any sales made after the exhibition that were initiated during the Artist’s show at Brookside Gardens. Artists with sold work must be registered as a vendor with M-NCPPC and must complete a “new vendor form” which will be emailed to you after the close of the exhibit. This form requires your social security number. Only artists with sold work are required to complete this form. After completion of the new vendor form it may take at least 30 days to receive your check.

**For further information contact:** Marian MacKerer, 301-590-9437, [vp@rockvilleartleague.org](mailto:vp@rockvilleartleague.org)

**Call to RAL Members**  
**Pepco Edison Place Gallery**  
**November 10 – December 19, 2014**

**Deadline: June 15, 2014 for entries**

Location: 702 Eighth Street, NW  
Washington, DC 20068

The Pepco Edison Place Gallery is a dedicated space available to nonprofit arts organizations. The gallery can hold eighty 2-D artworks plus sculpture but the artist must provide their own pedestals or stands. The gallery space, a receptionist, and security are provided at no charge to RAL. Gallery hours are Tuesday through Friday 12-4:00 pm. Works may be offered for sale, but the artist will be responsible for conducting the sale and no commission is taken.

**Eligibility and Rules:** Artist must be a RAL member with current dues paid in September 2014. Works must be framed or gallery wrapped (sides must be painted) and ready to hang with hanging wire. Maximum size is 60” x 60.” All 2-D media and sculptures will be accepted for jurying by the RAL board. There is no restriction on age of artwork or having been exhibited in any member show. 3-D artists must supply their own pedestals for display in the gallery. A \$20.00 fee will be collected from accepted artists only to cover post cards and reception costs. You will need to submit a 1 page bio, which will be included in the folder of exhibiting artists at the gallery.

Send up to 10 images to [vp@rockvilleartleague.org](mailto:vp@rockvilleartleague.org) by **Sunday, June 15, 2014**. Depending on the amount of artwork submitted will determine how many pieces are selected. The board will try to be as inclusive as possible. **All emails should have “Pepco Gallery show” in the subject line.** Images should be submitted in jpeg format only. Please rename your jpeg to include last name, title, and size, i.e. LastnameTitle24x24.jpeg. We will need this info to jury properly. You will be notified by July 13, or sooner which images have been selected. We will ask for the fee and your bio in September.

**Delivery** is Monday, November 10, 2014 at 10:00AM and **Pick up** is Friday, December 19, 2014 at 10:00AM.

**Opening Reception:** To be determined

**For further information contact:** Marian MacKerer, 301-590-

9437, [vp@rockvilleartleague.org](mailto:vp@rockvilleartleague.org)

## Critique by Penny Kritt

### A Pastel Critique

If *you* would like a critique, please email a photo to me at [pennykritt@aol.com](mailto:pennykritt@aol.com). Perhaps your work will be chosen for the next issue.

Carlos Garcia has been kind enough to volunteer his work with pastels. He has made my job challenging because it's a fine piece. I assume that Carlos thinks it "needs something" only because he has requested my comments. Further, I'll be making assumptions about colors based on what I see on my monitor. I have not seen the original, so some of my comments may be wrong based upon the unique color settings of my (and your) screen.



**Sunny Day**

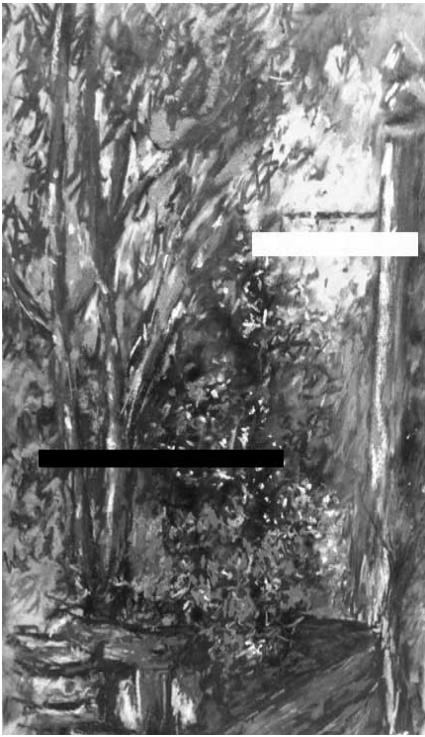
Soft pastel on pastelboard

By Carlos E. Garcia

The painting is 9 x 12 inches, so it's small, and small works can get away with techniques that just won't work in a larger format. If this were 24 x 36 inches, here are some suggestions that would give it a lively, very different feel.

As usual, let's start with the most obvious element of any artwork – the use of values from light to dark. Although the yellow patches indicate sunlight, the painting just doesn't seem to show bright sunlight. In the image below, the painting is converted to gray scale and I've added overlays of both black and white so you can see that the painting is almost all mid tone values with a few lights and nothing very dark. But in order to show bright sun light, put darks right against lights.





Now let's look at the same image but with darker shapes next to lighter ones. The original looks like it was done in the morning, but the one below seems like it shows the middle of the day.



It's not that the amount of value contrast that makes the painting "better", it just makes it different. Whether you work as a realist or prefer abstracts, when all the values in a piece are similar, the result will be calming. So if you think your work is "boring", the first thing to check is if you have the big enough value contrasts. The simple addition of darks next to lights can make all the difference.

**Tip:**

*If you don't think you need darks, put a piece of clear plastic (like a transparency for an overhead projector) over the work and add a black line or shape with a dry erase marker over an area you think is dark. It's a reality check. This is especially helpful when working with watercolors that usually dry lighter.*

I've also added more red flowers in front of the fence post on the right. Humans are programmed to find the color red and *stay there*. By extending the red, your eye now moves to the post and then goes up! Now the viewer can circle back around to enjoy the painting again.

This also gives the painting a greater sense of depth. Carlos already did that by putting the trees behind the planter with the red flowers. I just took his good idea a little further.



The original had fairly intense (bright) colors for all the leaves and red flowers. In the image above, a wash (light orange tinge to overlay other colors) provided more variety. It “warms” up the painting and the scene now shows a warmer, sun dappled late afternoon.

Now it’s time to compare the original to the modified version. I took out the wire that went from behind the tree to the fence post. Carlos partially obscured that line, but that even the lesser version of a strong horizontal line made the wire too important. Changing from yellow/green to yellow/red and making the shadows darker turned an early morning scene into one late in the afternoon. The darker shapes also added an element of mystery.



After

So which one is right? As the artist, whatever pleases you is always right! But here’s the challenge. If you think your work is good, it’s not



good enough. The goal is to keep at it until it makes you *happy*. Use these techniques above to help you identify what you might want to alter in your next painting.

If *you* would like a critique, please email a photo to me at [pennykritt@aol.com](mailto:pennykritt@aol.com). Perhaps your work will be chosen for the next issue.

**For classes or private lessons, contact Penny at 301/989-1799**

©Penny Kritt 2013

## BARTER BIN



### Artist's Easel for Sale

Used: asking \$300. (Mfg. price: \$625) The Mabef Convertible Easel (18d Convertible Easel-natural) goes from flat to vertical and all angles in between. Great for an artist who paints in watercolor, oil or acrylic or needs a table-like surface. Maximum canvas height is 65 inches. Other features include: four casters for easy movement, and leveling screws. Made in Italy of seasoned beechwood. Contact: 301-580-5564, or [normme2@gmail.com](mailto:normme2@gmail.com)

### Charbonnele etching inkpads for sale:

Raw Sepia \$13.10

Geranium Red \$15.70

Cobalt Blue \$13.10

Or best offer. Never opened, like new. Please contact: Laura Chassy (301)589-8058; [Laura.Chassy@yahoo.com](mailto:Laura.Chassy@yahoo.com).

## MEMBER NEWS

### Do you have an upcoming show? Or an event that RAL members might enjoy attending?

Please send an email to the newsletter editor! [dunnz@erols.com](mailto:dunnz@erols.com).

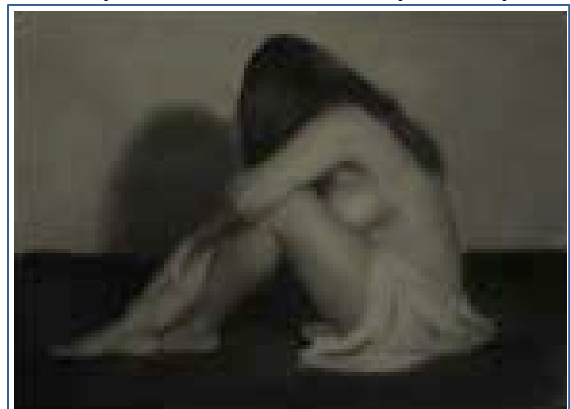
## ART CLASSES

### An Introduction to Figure Drawing: Martin Slater

The goal of the workshop is to enhance seeing and drawing the figure accurately and develop an understanding of underlying structures. The medium will be charcoal and paper (mainly newsprint). The dates are Saturday, June 7, and Sunday, June 8, from 11AM-2PM at Capitol Arts Network, 12276 Wilkins Ave., Rockville MD 20855.

<http://www.capitolartsnetwork.com/>  
<https://www.facebook.com/CapitolArtsNetwork>

Cost is \$60/day (minimum enrollment 5, maximum 20). It is possible to attend only Saturday's session, but not only Sunday's.



Deadline for enrollment: May 31.

Contact information: [slaterm@comcast.net](mailto:slaterm@comcast.net)

(h) 301-869-2658; (c) 240-4018642 [www.slatersdrawings.com](http://www.slatersdrawings.com)

Day 1: will be a series of gesture drawings (30 sec to 3 min.) of a nude model using different methods to encourage participants to see the whole figure at once and find an approach best for each individual. There will be a series in which the model poses for a minute or two, and participants would memorize pose. Participants would then draw the model from memory.

Day 2: will be a brief illustrated introduction to the anatomy of the skeleton and major muscle groups. The participants will then do 10 or 15 min. drawings, place tracing paper over the drawings and draw major muscle groups on the tracing paper. Longer poses would be used to allow further development of lights and shadows, highlights and reflected lights.

### **Ghost Ranch Workshop Retreat**

You are invited to Darla Bostick's 7th Annual Ghost Ranch Workshop/Retreat 2014 in Abiquiu, NM 5-11 October. Includes digital photography, watercolors/acrylics, pencil, incorporating text and mixed media work with opportunity for plein air painting and comfort of a group activity room (floor to ceiling vista views). For 7 days/6 nights you can relax, enjoy, and create. Lodging/meals included at Ghost Ranch property. The Georgia O'Keeffe Landscape Tour takes you where she painted from the magnificent area scenery. Visit the O'Keeffe studio/home on tour. Space is limited to 14 participants. Bring materials you love to work with (or try something new) and join us! The workshop fee is \$485. Room and board at the Ranch are per their rates. Unclaimed rooms will be released 1 September, but I may be able to get rooms after that date.

Come and see for yourself why Georgia O'Keeffe loved Ghost Ranch!

My website has more details: [www.darlabostick.com](http://www.darlabostick.com)  
Darla Bostick, [940.320.5660](tel:940.320.5660);  
Email: [darlabostickart@gmail.com](mailto:darlabostickart@gmail.com)

### **\*\*\*\*SUMMER 2014: Fine Arts & Design Class by Patricia Zannie\*\*\*\* ADS365: Kaleidoscope of Color in Modern Art**

This is a foundation course for students in fine arts and graphic design taught through the study of selected modern masters such as Monet, Van Gogh, Matisse, Rouault, and Picasso and how they used colors in innovative ways to make greater impact. They truly shocked the art world at the time and their works have since become cornerstones of contemporary art. Utilizing the technique of collage, you will develop your own artworks based on the colors used by the modern masters. Explore how these artists created a new sense of impact which some artists are still using today. Tuition waiver applies; seniors pay fee only.

\$138.00 + \$140.00 Fee = \$278.00; Non-Md Residents: Add \$140.00

CRN# 14178 8 sessions Thursday 9:30 - 12:00 6/5/14 thru 7/24/14 in CF 234

***For assistance or additional information call Belva Hill at 240-567-5821 or email her at [Belva.Hill@montgomerycollege.edu](mailto:Belva.Hill@montgomerycollege.edu) or contact Customer Service at 240-567-5188.***



**Nadia Azumi**, local chapter president of Silk Painters International for MD, VA, and DC, holds meetings, workshops and classes in silk painting at her residence in Rockville. For more information please contact her at: [nadia@nadiasilk.com](mailto:nadia@nadiasilk.com)

## ART OPPORTUNITIES

Below are the featured listings this week in [ProfessionalArtistMag.com](http://ProfessionalArtistMag.com) for all of the newest opportunities.

<http://orders.professionalartistmag.com/adlisting/>

**Delaplaine Visual Art Education Center Call for Entries.** The Delaplaine Visual Art Education Center is scheduling solo and small group exhibit opportunities for 2014-2015 in five galleries housed in a historic art center in downtown Frederick. Open to all media.

[https://www.delaplaine.org/site/?utm\\_source=PROJECTOR+6-27-13&utm\\_campaign=Projector&utm\\_medium=email](https://www.delaplaine.org/site/?utm_source=PROJECTOR+6-27-13&utm_campaign=Projector&utm_medium=email)

**Eligibility:** Open; **Deadline:** Ongoing  
**Entry Fee:** \$30 fee for non-members

**Northern Virginia Art Center's new Specials Exhibitions space.** The Northern Virginia Art Center is searching for talented professional artists with a cohesive body of work to exhibit in their new Special Exhibitions space in the heart of Crystal City's thriving restaurant district. 380 square feet of gleaming exhibition space available for monthly exhibits of 2D or 3D art! Their full time gallery staff will assist in exhibit installation, process sales of your work, and will coordinate your opening reception, all for a small fee and low sales commission.

**Eligibility:** Open; **Deadline:** Ongoing  
**Entry Fee:** N/A

[http://novaartcenter.org/our-mission/show-opportunities/?utm\\_source=PROJECTOR%206](http://novaartcenter.org/our-mission/show-opportunities/?utm_source=PROJECTOR%206)

[-27-](#)

[13&utm\\_campaign=Projector&utm\\_medium=email](#)

### **Rockville Innovation Center Call for Entries**

Rockville Innovation Center is interested in showcasing the work of local artists in their gorgeous location. The RIC is looking to fill its beautiful space with artwork by metro area artists and photographers.

<http://www.visartsatrockville.org/call-for-entries/feast>

**Eligibility:** Open; **Deadline:** Ongoing  
**Entry Fee:** N/A

**Montpelier Arts Center.** Artists interested in exhibiting in the Main Gallery or curators who want to propose an exhibition should send a one page proposal, resume(s), and a CD of no fewer than 20 images to Main Gallery, Montpelier Arts Center, 9652 Muirkirk Road, Laurel, MD 20708.

[http://arts.pgparcs.com/Community\\_Arts\\_Services/Artist\\_Resources.htm?utm\\_source=PROJECTOR+6-27-13&utm\\_campaign=Projector&utm\\_medium=email](http://arts.pgparcs.com/Community_Arts_Services/Artist_Resources.htm?utm_source=PROJECTOR+6-27-13&utm_campaign=Projector&utm_medium=email)

**Eligibility:** Open; **Deadline:** Ongoing  
**Entry Fee:** N/A

**DC Photo Grid.** The DC Photo Grid is an aggregated map of the city generated from user-submitted photographs, and the DC Crowd-Sourced Video Project offers a constantly looping portrait of the city as viewed by its inhabitants.

[http://www.dcphtogrid.com/?utm\\_source=PROJECTOR+6-27-13&utm\\_campaign=Projector&utm\\_medium=email](http://www.dcphtogrid.com/?utm_source=PROJECTOR+6-27-13&utm_campaign=Projector&utm_medium=email)

**Eligibility:** Open; **Deadline:** Ongoing  
**Entry Fee:** N/A



## ***GLENVIEW MANSION CONFERENCE ROOM SHOWS***

You can show your artwork in Glenview Mansion for one month if you have received a 1<sup>st</sup>, 2<sup>nd</sup>, 3<sup>rd</sup> or honorable mention award in an RAL juried show. Starting in 2013, artists may have both rooms to exhibit in if a second artist doesn't sign up for the same month within two months of the show's start date; otherwise they will have one room. The receptions at Glenview mansion are 1:30-3:30 pm, on the Sunday after hanging! Preferred drop-off and pick-up times for Glenview Shows are from 9 am to 12 noon. Note: please contact the mansion management ahead of time if you wish to modify the drop-off or pick-up times.

For artwork delivery at the Glenview Mansion, please be prepared to unwrap your work and take the wrappings with you - there is no room to store packing materials at the Mansion. Please bring pliers (needle nose are easy to work with). There is no one to help move artwork from your vehicle to the conference rooms, however, you may use the hand truck that is at the Mansion. You are responsible for hanging your own artwork with help from the Mansion staff. If you have not made labels for your work, please fill out the RAL cards that will be available when you bring your work to the conference room. If you print your own, they should be on card stock. Please do not use the sticky Avery labels, unless you adhere them to foam core or card stock.

If you are unavailable on the appropriate date for pickup, please arrange with someone to pickup for you. There is no room to store your artwork at the Mansion after it comes down.

Please note that in 2014, drop off/pickup switches from Wednesdays to Mondays (unless **Monday** is a holiday).

Thanks - please contact Julie Farrell, Arts Programs Specialist at Glenview, with any questions. [jfarrell@rockvillemd.gov](mailto:jfarrell@rockvillemd.gov).

**If you need to contact Julie Farrell, please send an email to [jfarrell@rockvillemd.gov](mailto:jfarrell@rockvillemd.gov)** Please be aware that is no staff at the mansion available to help you move your artwork into the conference rooms and if you need assistance, you need to assist yourself! Or ask a friend to help you, or contact Julie about hiring a mover.

| <b>2014</b> |                 |                  |               |
|-------------|-----------------|------------------|---------------|
|             | <b>Drop off</b> | <b>Reception</b> | <b>Pickup</b> |
| May         | April 28        | May 4            | May 27        |
| June        | May 27          | June 1           | June 23       |
| July        | June 23         | June 29          | July 28       |
| August      | July 28         | August 3         | Sept 2        |
| September   | Sept 2          | Sept 7           | Sept 29       |
| October     | Sept 29         | Oct 5            | Oct 27        |
| November    | Oct 27          | Nov 2            | Dec 1         |
| December    | Dec 1           | Dec 7            | Jan 5         |

Monday delivery and hanging: 9AM–12PM  
Sunday Gallery Opening: 1:30–3:30PM  
Wednesday Pickup: 9AM–12PM

**June 2014: RAL Board Members' Show**  
**July 2014: Diane Jeang**  
**Aug. 2014: Open**  
**Sept. 2014: Jackie Austin**  
**Oct. 2014: Eric Gross**  
**Nov. 2014: Emily Pearce and Regina Price**  
**Dec. 2014: RAL Members' Winter Show**  
**Jan. 2015:**  
**Feb. 2015: Jorge Bernal (2)**  
**March 2015: Student Art Show**  
**April 2015:**  
**May 2015: RAL Members' Spring Show**

*Glenview/Open Show Coordinator:* Diane Jeang, (301) 871-1589 E-mail: [swinedoc@yahoo.com](mailto:swinedoc@yahoo.com)

***RAL ONGOING SHOW LIST***

**Bank of America - 3200 Sandy Spring Road, Olney, Maryland**  
10-12 paintings, Contact: (301) 232-1370

**Twinbrook Library - 202 Meadow Hall Drive, Rockville, Maryland**  
Shows are now 1 month in length. 5 medium to large paintings, Contact person: Chris Lindy (240)-777-0240, [christinelundy@montgomerycountymd.gov](mailto:christinelundy@montgomerycountymd.gov)

**Rockville Community Services Office - 30 Courthouse Square Rockville, Maryland**  
10-12 medium to large paintings, Contact person: Carlos Aparicio (240) 314-8303

**Thomas Farm Community Center – 700 Falls Grove Drive, Rockville, Maryland**  
12-16 medium to large paintings, Contact person: Martha Coester (240) 314-8842  
Open Apr. 15, 2015-June 15, 2014  
Open June 15, 2014-Oct. 15, 2014  
Valthea Fry (301) 926-7084 Oct. 15, 2014-Dec. 15, 2014

**Marilyn J. Praisner Library – 14910 Old Columbia Road, Burtonsville, Maryland**  
10 small to medium or 5-6 large paintings (10 hanging chains), Contact person: Vera Ramaty (240) 773-9455

---

## RAL BOARD OF DIRECTORS

| <u>Position</u>                      | <u>Name</u>      | <u>Phone</u> | <u>e-mail</u>  |
|--------------------------------------|------------------|--------------|--|
| <b>President:</b>                    | Fred Ruckdeschel | 301-320-3911 | <a href="mailto:fred.ruckdeschel.and.art@gmail.com">fred.ruckdeschel.and.art@gmail.com</a> |
| <b>1<sup>st</sup> VP:</b>            | Nadia Azumi      | 301-538-0062 | <a href="mailto:nadia@nadiasilk.com">nadia@nadiasilk.com</a>                               |
| <b>Treasurer</b>                     | Patricia Zannie  | 301-962-8581 | <a href="mailto:patriciacollages@yahoo.com">patriciacollages@yahoo.com</a>                 |
| <b>Secretary</b>                     | Emily Pearce     | 919-699-2547 | <a href="mailto:ekepearce@gmail.com">ekepearce@gmail.com</a>                               |
| <b>Membership</b>                    | Susan Dunnell    | 301-949-1514 | <a href="mailto:dunnz@erols.com">dunnz@erols.com</a>                                       |
| <b>Show Coordinator</b>              | Diane Jeang      | 301-871-1589 | <a href="mailto:swinedoc@yahoo.com">swinedoc@yahoo.com</a>                                 |
| <b>Publicity/mkt.</b>                | Nadia Azumi      | 301-538-0062 | <a href="mailto:nadia@nadiasilk.com">nadia@nadiasilk.com</a>                               |
| <b>Newsletter editor</b>             | Susan Dunnell    | 301-949-1514 | <a href="mailto:dunnz@erols.com">dunnz@erols.com</a>                                       |
| <b>Program coordinator</b>           | Liliane Blom     | 301-518-5312 | <a href="mailto:lilianeblom@aol.com">lilianeblom@aol.com</a>                               |
| <b>Communications committee</b>      | <b>VACANT</b>    |              |  |
| <b>Open shows</b>                    | Diane Jeang      | 301-871-1589 | <a href="mailto:swinedoc@yahoo.com">swinedoc@yahoo.com</a>                                 |
| <b>Glenview member shows</b>         | Diane Jeang      | 301-871-1589 | <a href="mailto:swinedoc@yahoo.com">swinedoc@yahoo.com</a>                                 |
| <b>Hospitality</b>                   | Martha Campos    | 301-266-4670 | <a href="mailto:ximenace@verizon.net">ximenace@verizon.net</a>                             |
| <b>Historian</b>                     | Patria Baranski  | 301-424-6193 |  |
| <b>Web master</b>                    | Michael Auger    | 202-670-2789 | <a href="mailto:RAL@arty4ever.com">RAL@arty4ever.com</a>                                   |
| <b>Founder, Hon. lifetime member</b> | Eileen Mader     | 301-762-6458 |  |

