



RockvilleArtLeague.org Vol. XXIII No. 9 May 2014

**NEXT MEETING – MAY 1st, 6:30 PM**  
**Judge Susan Main’s Walkthrough of RAL Juried Show**

## **MESSAGE FROM THE PRESIDENT**

### **LILIANE BLOM**

Dear fellow artists and art lovers,

This is my last message to you as your President. It has been a wonderful four years



and I thank you all for your contributions, help and guidance. Here are some of the things we accomplished over the last 4 years:

- The newsletter was redesigned and revamped, it now contains a multitude of fascinating info for and about you!
- We created a new brochure for the league.
- Created a face book page.
- Mini web pages were made available to you for just \$10.
- Implemented a new registration system.
- We won a grant to make virtual tours of our shows and produced 4 of them which you can see on our website.

- Interviewed judges and posted the interviews for your edification.
- We expanded our reach by adding more outside shows in addition to our regular bi annual juried exhibits. Check out the upcoming Pepco gallery and Brookside garden show, details below.
- We made glass ornaments, painted on silk, and made image transfers and clay doves! So much fun in so little time!
- We have a free workshop coming up in a few weeks, thanks to another educational grant. It's a FREE HANDS-ON workshop sponsored by the league for its members on May 17th. There might still be a few slots left, but once we are full, you are out of luck! Details below.
- We rewrote the bylaws - and had fun doing it!

I apologize for all the things I forgot in advance! And want to give our retiring board members a big Thank You! They have been fantastic, but now it's your turn to step up and make things happen, you can create events, make friends and have a blast doing it.

Thanks **Marian Mackerer**, for all your 7 years of coordinating the show! You have been amazing.

Thanks, **Noble**, for keeping us up and running on the web for the last decade!

Thanks, **Jorge**, for coordinating our programming the last two years. Enjoy the beautiful southwest.

I'll still be around next year doing programming, so let me know what you would like to see on the program!

Short Bios for New Board Members:

**President: *Fred Ruckdeschel***

Fred Ruckdeschel is a mixed media or collage artist and an enthusiastic student of Pat Zannie. A couple decades or so ago, he was president of the National Enamelist Guild. He believes RAL needs more volunteers to help the League continue to thrive and hopes that they can assist in developing new activities that will both energize their own artistic endeavors as well as their participation in the RAL community of artists.

**1<sup>st</sup> Vice President: *Nadia Azumi***

Nadia Azumi is an Italian Silk painter. She uses silks, dyes, Murano glass and Italian Renaissance colors in her paintings. Her background is in Japanese art. Nadia studied Fashion Design, Croquit and Textile Designs at San Francisco University. She teaches, lectures and demonstrates silk painting. Nadia has exhibited her artwork in many prestigious locations.

**Secretary: *Emily Pearce***

Emily Pearce creates botanical art at her home in Rockville, Maryland. She is returning to art after 8 years in public health and brings to the board her love of art as well as training in nonprofit management and community engagement.

**Webmaster: *Michael Auger***

Michael Auger (last name pronounced: O-'zhA / rhymes with okay) creates offbeat paintings that feature an assortment of animals, crazy characters, mythical monsters and more from his home studio in Rockville, Maryland. He also provides custom illustration and graphic design services for both print and web.

Looking forward to seeing you on May 1<sup>st</sup>!

Liliane Blom – President, RAL

**RAL Juried Member Art Show  
Glenview Mansion  
May 4 – 26, 2014**

**Judge:** Susan Main will be our juror for the May Member Show. She is the Curatorial Consultant, Director of Galleries and Exhibition Programming at VisArts. Recent exhibitions curated by Main include: “Field Work,” “\_\_\_\_\_scape,” and “Speed and Pressure,” all of which were presented at VisArts. She co-initiated a cross-cultural art collaboration between emerging artists in the U.S. and Afghanistan that resulted in the exhibition, “Crossing the Distance,” at VisArts and traveled to Kabul, Afghanistan. A long time educator, Main is currently an adjunct Faculty Member at the Maryland Institute College of Art (MICA) in Baltimore and Program Director of the MICA Pre-College Program in Tuscany, Italy. Main is also an artist who uses painting, drawing, video and projection. Her work has been exhibited nationally and internationally and is in public and private collections. She has a MFA in Painting from UMD, College Park and an MFA in Interactive Media and Digital Art from UMBC, Baltimore County. Susan’s artwork can be viewed at [www.susanmain.net](http://www.susanmain.net). She will conduct a gallery walk-through on Thursday, May 1, at 6:30 PM.

**Eligibility and rules:** Each member in good standing may enter two works. The maximum length of any framed side is 60 inches. Only **original** works securely framed with hanging wire are acceptable. The entries must have been

completed within the last two years and may not have been exhibited previously in a RAL Member Show. No photographs, no reproductions, no giclées and no wet canvases are allowed. A work having multiple framed parts must meet the two works per member criteria. Entries not meeting the show conditions will not be accepted. RAL retains the right to determine suitability of work for entry in this show. Artist's signature on the Show Agreement also constitutes a commitment to donate 20% of the sale price to the City of Rockville for works sold during the show.

**Categories:**

- Oils and acrylics
- Watercolors
- Pastels, drawings, and hand pulled prints
- Mixed media, collage, experimental, and original computer-generated art
- Sculpture and ceramics

**Awards:**

- Best in Show (cash and ribbon)
- First, Second and Third in all categories (cash and ribbons)
- Honorable Mention at the judge's discretion (ribbons)

**Delivery:** Tuesday, April 29, Noon - 2 PM and 5 – 7 PM. Register and deliver your work to the second floor Glenview Mansion Art Gallery, Rockville Civic Center. On Wednesday, April 30, please phone the pickup hotline after 2 PM, **240-314-8682**, to see if your work was juried into the show. If your number is listed then you or your designee must pick up your work on Thursday, May 1, Noon -2:00 PM and 4:30 – 6:30 PM.

**Gallery Walk Through:** Thursday, May 1, at 6:30 PM.

**Reception:** Sunday, May 4, from 1:30-3:30 PM. Presentation of awards at 2 PM. Light refreshments to follow.

**Final Pick Up:** Tuesday, May 27, 2014, Noon – 2 PM and 5-7 PM. Your work must be picked up. Please have your designee pick up your work if necessary. Any work left after Wednesday noon will not be insured. There is no storage available.

**Sales:** The Glenview Mansion staff will manage art sales. Artist's signature on the Show Agreement also constitutes a commitment to donate 20% of the

sale price to the City of Rockville for works sold during the show.

**We need volunteers** to help register, move, hang, type, and release entries. Please check your schedules and volunteer. It takes a lot of manpower to put this show together. The \$5 entry fee will be waived if you volunteer for the May show.

Tuesday, April 29	Noon-2PM	register work
Tuesday, April 29	5-7PM	register work
Wednesday, April 30	9-noon	move artwork
Thursday, May 1	9-noon	hang art
Thursday, May 1	Noon-2	call winners, write ribbons
Thursday, May 1	Noon-2	pickup of unaccepted artwork
Thursday, May 1	4:30-6:30	pickup of unaccepted artwork
Tuesday, May 27	noon-2	final pickup of artwork
Tuesday, May 27	5-7PM	final pickup of artwork

Most of the time slots are two hour shifts except for Thursday when the judging and hanging are done. If you can only work two hours we can still use your help. We will need the most help those days. Please check your calendar! A sign-up sheet will be passed around at the April meeting or feel free to call or email me.

If you have any questions or concerns, please call at 301-590-9437 or email [mackerer@comcast.net](mailto:mackerer@comcast.net).

Marian MacKerer

**Call for Rockville Art League Members**

**Brookside Gardens**

**September 22 – November 3, 2014**

**Deadline: June 15, 2014 for entries**

Location: 1800 Glenallan Avenue  
Wheaton, MD 20902

RAL members are invited to exhibit at Brookside Gardens from September 22 to

November 3, 2014. Only 2-D media with a nature-related theme will be accepted for jurying by the RAL board. No sculptures for this venue. All artwork is for sale with Brookside taking 25% commission.

**Eligibility and Rules:** Artist must be a RAL member with current dues paid in September 2014. Works must be framed or gallery wrapped (sides must be painted) and ready to hang with hanging wire. Maximum size is 42” x 42.” All artwork must have a nature-related theme. All 2-D media will be accepted for jurying by the RAL board. There is no restriction on age of artwork or having been exhibited in any member show. A \$5.00 entry fee will be collected from accepted artists only.

Send up to 10 images to: [vp@rockvilleartleague.org](mailto:vp@rockvilleartleague.org) by **Sunday, June 15, 2014**. Depending on the amount of artwork submitted will determine how many pieces selected. The board will try to be as inclusive as possible. **All emails should have “Brookside show” in the subject line.** Images should be submitted in jpeg format only. Please rename your jpeg to include last name, title, and size, for example, LastnameTitle16x20.jpeg. We will need this info to jury properly. You will be notified by July 13, or sooner, which images have been selected. At that time we will ask for the entry fee.

Giclée prints or original artwork will also be accepted for the bin. All bin work, between the sizes of 11” X 14” and 16” X 20,” should have a backing and be in a clear bag enclosure (these may be found at clearbags.com or Plaza Art). The bin will hold up to 30 prints. This total will be divided up between the numbers of exhibiting artists.

**Delivery** is Monday, September 22, 2014 at 10:00AM and **Pick up** is Monday, November 3, 2014 at 9:00AM. Parking lot repairs will be

going on at this time so we will keep you informed as to where to load and unload your artwork.

**Sales:** Brookside Gardens will receive a 25% commission on any sales made during the exhibit or for a 6 month period after the exhibit. Brookside Gardens relies upon the Artist to submit the 25% commission on any sales made after the exhibition that were initiated during the Artist’s show at Brookside Gardens. Artists with sold work must be registered as a vendor with M-NCPPC and must complete a “new vendor form” which will be emailed to you after the close of the exhibit. This form requires your social security number. Only artists with sold work are required to complete this form. After completion of the new vendor form it may take at least 30 days to receive your check.

**For further information contact:** Marian MacKerer, 301-590-9437, [vp@rockvilleartleague.org](mailto:vp@rockvilleartleague.org)

**Call to RAL Members**  
**Pepco Edison Place Gallery**  
**November 10 – December 19, 2014**

**Deadline: June 15, 2014 for entries**

Location: 702 Eighth Street, NW  
Washington, DC 20068

The Pepco Edison Place Gallery is a dedicated space available to nonprofit arts organizations. The gallery can hold eighty 2-D artworks plus sculpture but the artist must provide their own pedestals or stands. The gallery space, a receptionist, and security are provided at no charge to RAL. Gallery hours are Tuesday through Friday 12-4:00 pm. Works may be offered for sale, but the artist will be responsible for conducting the sale and no commission is taken.

**Eligibility and Rules:** Artist must be a RAL member with current dues paid in September 2014. Works must be framed or gallery wrapped (sides must be painted) and ready to hang with hanging wire. Maximum size is 60” x 60.” All 2-D media and sculptures will be accepted for jurying by the RAL board. There is no restriction on age of artwork or having been exhibited in any member show. 3-D artists must supply their own pedestals for display in the gallery. A \$20.00 fee will be collected from accepted artists only to cover post cards and reception costs. You will need to submit a 1 page bio, which will be included in the folder of exhibiting artists at the gallery.

Send up to 10 images to [vp@rockvilleartleague.org](mailto:vp@rockvilleartleague.org) by **Sunday, June 15, 2014**. Depending on the amount of artwork submitted will determine how many pieces are selected. The board will try to be as inclusive as possible. **All emails should have “Pepco Gallery show” in the subject line.** Images should be submitted in jpeg format only. Please rename your jpeg to include last name, title, and size, i.e. LastnameTitle24x24.jpeg. We will need this info to jury properly. You will be notified by July 13, or sooner which images have been selected. We will ask for the fee and your bio in September.

**Delivery** is Monday, November 10, 2014 at 10:00AM and **Pick up** is Friday, December 19, 2014 at 10:00AM.

**Opening Reception:** To be determined  
**For further information contact:** Marian MacKerer, 301-590-9437, [vp@rockvilleartleague.org](mailto:vp@rockvilleartleague.org)

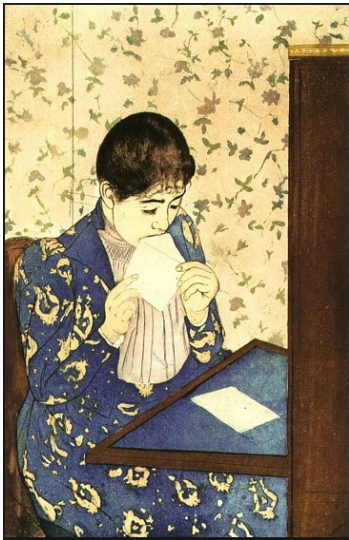
## **FREE! for RAL Members:**

### **Hands on Collage Workshop on May 17<sup>th</sup>: HANDS-ON COLLAGE WORKSHOP MAY 17th: “JAPONAISE” INFLUENCE ON EUROPEAN ARTISTS presented by Patricia Zannie**

After 200 years of exclusion and isolation, Japanese aesthetics in wood block prints of courtesans, geisha and kabuki actors flooded into European cities and gained great popularity with artists like Degas, VanGogh, Cassatt, and Lautrec. Prints were collected—artists’ models were draped in kinomos with fans and porcelain objects surrounding them and displayed in European artworks of the time. But some Artists reached deeper, beyond the staged oriental props, and incorporated the compositional qualities found in the Japanese prints of landscapes, everyday life, the theatre, and the pleasure quarters. These artists produced work with elongated pictorial formats, asymmetrical compositions, aerial perspective, empty areas, subjects off-center and low diagonal lines that changed Western Art forever. Come and explore their designs. Workshop participants will be given “goodie bags” of mulberry, origami, ogura lace papers and images from Japan, as well as print pattern papers from London & Paris to make their own collages on cards, envelopes and poster boards (which will also be provided). Participants are asked to bring their own scissors and tacky glue, or rubber cement, and any postcards or Oriental trinkets you may want to add to your collages.

The workshop will be conducted by Patricia Zannie, on Saturday, May 17th from 9:30 to 12:30 at Elwood Smith Recreation Center, 601 Harrington Road in Rockville. RAL will use grant money so that participation in the workshop is **FREE FOR RAL MEMBERS**. The workshop can accommodate 30

participants. Refreshments will be served. There is plenty of room for parking. To secure your place for this workshop, please contact Marian Mackerer at [mackerer@comcast.net](mailto:mackerer@comcast.net).



"The Letter" by Mary Cassatt, 1891

## Critique by Penny Kritt

### Painting Plants

If *you* would like a critique, please email a photo to me at [pennykritt@aol.com](mailto:pennykritt@aol.com). Perhaps your work will be chosen for the next issue.

With spring in full bloom, many of us have to grab our art supplies and head outside for inspiration. If your allergies are acting up, go on line for images of our local flora or of exotic plants that don't grow in our area. Or just bring a few plants inside and create your own still life. You might want to do a floral study where you just paint or draw flowers to get a better understanding of their shapes. But if you want to do a composition suitable for framing, decide at the outset whether you'll be doing a "close up" of a single flower or a bright jumble of multiple blossoms. That single decision will help you decide how big each separate shape will be. It will also determine how much (or how little) background you'll need to fill the picture space.



**Yellow Hibiscus**/Watercolor  
By Penny Kritt

Above is a "painterly" version of a hibiscus. I didn't worry about trying to duplicate a real flower. Note that most shadows on the petals range from warm oranges and rose colors to a few cooler blues and turquoise. Some of the yellows are clean and bright. As the petals roll into shadows, most of the darker colors are ochers, oranges or warm browns. The cooler green and blue shadows are mostly relegated to the background to create a sense of warmth throughout the composition. They maximize the contrast with what little cool background I used to fill out the picture space.

Now let's look at another composition about yellow flowers.



***Sunflowers and Hollyhocks***/Watercolor  
By Penny Kritt

As with everything else we create, all the magic lies in the value shapes you create and how you transition from one shape to another. By varying the transitions, you can make leaves and petals shine in the sun or roll into the shadows.

Your florals will also be more interesting if all the plants aren't lined up and facing the same way like soldiers on a parade field. Notice the back of the sunflower in the upper right corner. The pointed ends of the leaves where the stalk connects to the flower makes a nice contrast to how curvilinear the other shapes are.



Inset 1

In the inset above, almost all the edges are hard. That gives the painting a sense of depth. The long vertical stem on the right is behind the leaf on the lower right but in front of the red hollyhock. It just requires a little planning!



Inset 2

In this part of the painting, many of the edges have a softer, less distinct transition to the next value or shape. Look at the bud in the lower right. Its pink tip softly changes into the yellow, sunlit part of the leaf. Follow the leaf further down and it slowly becomes dark as the round bud rolls into the shadows.



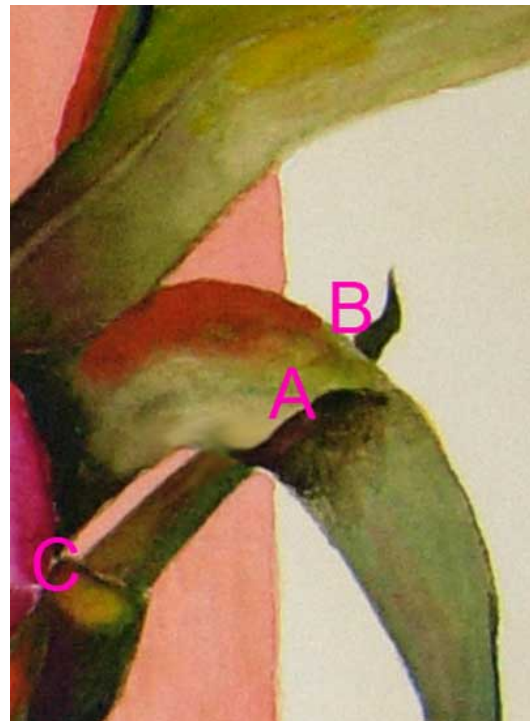
**Roses of Antrim**/Watercolor  
By Penny Kritt

Another way to give your work a “painterly” quality is through your choice of colors within a single petal. Avoid using the same color throughout each one – if you do, the petal (or leaf) will look flat and boring. Although each petal is the same color on a flower, be brave and use other colors to create the highlights and shadows. For example, the leaf that touches the top of the rose is a bright green to show sunlight but the bottom of that leaf gradually becomes darker as it rolls away from the light. Now compare it to the leaf at the lower right. That leaf is darker at the top because of a shadow cast from the leaf above. Also, it’s painted with a green that is more muted and has more yellow in it than the leaf we first talked about.



**Tea and Tulips**/Watercolor  
By Penny Kritt

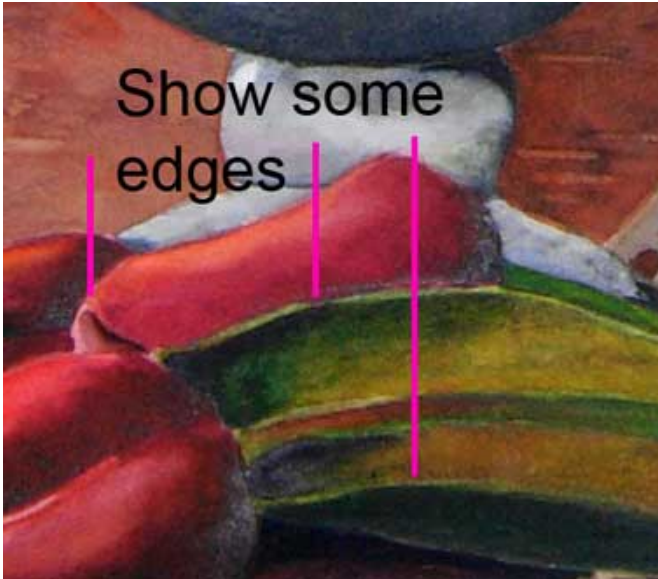
In this happy still life, I’ve added a number of different textures as a counterpoint to the soft roundness of the flowers. You see the shine of the silver teapot, the cutwork on the lace napkin, a tasty muffin along with some fancy china. For this lesson, however, pay special attention to the clear glass vase. The water line will *always* be a straight horizontal. The leaves above the vase are precisely painted, but the ones in the vase, particularly below the water line, are blurred.



Inset 3



Notice how leaf **A** rises out of the shadows so you can see the top and then it curls so you can see the underside. That hard edge tells the viewer how the leaf twists. The leaf connected by both the **B** and **C** is even more complicated. At **C**, the leaf rises out of the shadows and then bends down out of sight. The viewer knows that because the highlight ends at a hard edge in the middle of the **C**. That leaf then goes up behind leaf **A** and ends in the curvy point **B**.



Inset 4

Take your realism to a higher level by showing the edge of some petals and leaves. A beginner shows that each part has width and length. Adding the thin edge then gives the form depth.

It doesn't matter whether you paint or draw your flowers. Just be sure to vary the values and use the right transition between them. And if your flower is just boring, it's probably all mid tone values. Add some really light highlights and then a few very dark shapes. I guarantee it will help!

**For classes or private lessons, contact Penny at 301/989-1799**

**For classes or private lessons, contact Penny at 301/989-1799**

©Penny Krittr 2013

## BARTER BIN



### Artist's Easel for Sale

Used: asking \$300. (Mfg. price: \$625) The Mabef Convertible Easel (18d Convertible Easel-natural) goes from flat to vertical and all angles in between. Great for an artist who paints in watercolor, oil or acrylic or needs a table-like surface. Maximum canvas height is 65 inches. Other features include: four casters for easy movement, and leveling screws. Made in Italy of seasoned beechwood. Contact: 301-580-5564, or [normme2@gmail.com](mailto:normme2@gmail.com)

### Charbonnele etching inkpads for sale:

Raw Sepia \$13.10

Geranium Red \$15.70

Cobalt Blue \$13.10

Or best offer. Never opened, like new. Please

contact: Laura Chassy (301)589-8058;

[Laura.Chassy@yahoo.com](mailto:Laura.Chassy@yahoo.com).

## MEMBER NEWS

**Vatsala Menon** was invited to contribute a painting, based on James Rouse's quote, "Optimism Stimulates Energy, Spirit, Hope and Action," whose 100<sup>th</sup> birthday celebration is sponsored by the Howard County Tourism & Promotion, Blossoms of Hope and the

Columbia Art Center. James Rouse was the visionary developer who built new towns in the countryside—like Columbia, MD; shopping malls in the suburbs and “festival marketplaces,”—like Faneuil Hall in Boston. He later used the profits from these ventures to help generate housing for the poor.

The proceeds of this charity event will go to the cancer research foundation set up in Howard County, MD. Dates of exhibition are April 10—27, 2014. Columbia Art Center, 6100 Foreland Garth, Columbia, MD 21045. <http://www.columbiaassociation.org/facilities/columbia-art-center>.

**Do you have an upcoming show? Or an event that RAL members might enjoy attending?**

Please send an email to the newsletter editor! [dunnz@erols.com](mailto:dunnz@erols.com).

## ART CLASSES

### **An Introduction to Figure Drawing: Martin Slater**

The goal of the workshop is to enhance seeing and drawing the figure accurately and develop an understanding of underlying structures. The medium will be charcoal and paper (mainly newsprint). The dates are Saturday, June 7, and Sunday, June 8, from 11AM-2PM at Capitol Arts Network, 12276 Wilkins Ave., Rockville MD 20855.

<http://www.capitolartsnetwork.com/>  
<https://www.facebook.com/CapitolArtsNetwork>

Cost is \$60/day (minimum enrollment 5, maximum 20). It is possible to attend only Saturday's session, but not only Sunday's.



Deadline for enrollment: May 31.

Contact information: [slaterm@comcast.net](mailto:slaterm@comcast.net)  
(h) 301-869-2658; (c) 240-4018642 [www.slatersdrawings.com](http://www.slatersdrawings.com)

Day 1: will be a series of gesture drawings (30 sec to 3 min.) of a nude model using different methods to encourage participants to see the whole figure at once and find an approach best for each individual. There will be a series in which the model poses for a minute or two, and participants would memorize pose. Participants would then draw the model from memory.

Day 2: will be a brief illustrated introduction to the anatomy of the skeleton and major muscle groups. The participants will then do 10 or 15 min. drawings, place tracing paper over the drawings and draw major muscle groups on the tracing paper. Longer poses would be used to allow further development of lights and shadows, highlights and reflected lights.

### **SUMMER 2014: Fine Arts & Design Class by Patricia Zannie**

#### **ADS365: Kaleidoscope of Color in Modern Art**

This is a foundation course for students in fine arts and graphic design taught through the study of selected modern masters such as Monet, Van Gogh, Matisse, Rouault, and Picasso and how they used colors in innovative ways to make greater impact. They truly shocked the art world at the time and their works have since become cornerstones of

contemporary art. Utilizing the technique of collage, you will develop your own artworks based on the colors used by the modern masters. Explore how these artists created a new sense of impact which some artists are still using today. Tuition waiver applies; seniors pay fee only.

\$138.00 + \$140.00 Fee = \$278.00; Non-Md Residents: Add \$140.00

CRN# 14178 8 sessions Thursday 9:30 - 12:00 6/5/14 thru 7/24/14 in CF 234

**For assistance or additional information call Belva Hill at 240-567-5821 or email her at [Belva.Hill@montgomerycollege.edu](mailto:Belva.Hill@montgomerycollege.edu) or contact Customer Service at 240-567-5188.**



### **Watercolor Corrections Workshop with Penny Kritt**

Watercolor isn't scary any more. Corrections are easy if you have the right materials. Learn the secrets from a pro. It's much more forgiving than acrylics or oils. See what to buy and how to fix or change anything. You'll never have to start over again!

Columbia Art Center, Columbia Maryland  
Friday, May 16 from 10 am to noon  
\$25 for residents/\$35 for non-residents

**Nadia Azumi**, local chapter president of Silk Painters International for MD, VA, and DC, holds meetings, workshops and classes in silk painting at her residence in Rockville. For more

information please contact her at: [nadia@nadiasilk.com](mailto:nadia@nadiasilk.com)

## **ART OPPORTUNITIES**

Below are the featured listings this week in [ProfessionalArtistMag.com](http://ProfessionalArtistMag.com) for all of the newest opportunities.

<http://orders.professionalartistmag.com/adlisting/>

**Delaplaine Visual Art Education Center Call for Entries.** The Delaplaine Visual Art Education Center is scheduling solo and small group exhibit opportunities for 2014-2015 in five galleries housed in a historic art center in downtown Frederick. Open to all media.

[https://www.delaplaine.org/site/?utm\\_source=PROJECTOR+6-27-13&utm\\_campaign=Projector&utm\\_medium=email](https://www.delaplaine.org/site/?utm_source=PROJECTOR+6-27-13&utm_campaign=Projector&utm_medium=email)

**Eligibility:** Open; **Deadline:** Ongoing  
**Entry Fee:** \$30 fee for non-members

**Northern Virginia Art Center's new Specials Exhibitions space.** The Northern Virginia Art Center is searching for talented professional artists with a cohesive body of work to exhibit in their new Special Exhibitions space in the heart of Crystal City's thriving restaurant district. 380 square feet of gleaming exhibition space available for monthly exhibits of 2D or 3D art! Their full time gallery staff will assist in exhibit installation, process sales of your work, and will coordinate your opening reception, all for a small fee and low sales commission.

**Eligibility:** Open; **Deadline:** Ongoing  
**Entry Fee:** N/A

[http://novaartcenter.org/our-mission/show-opportunities/?utm\\_source=PROJECTOR%206-27-13&utm\\_campaign=Projector&utm\\_medium=email](http://novaartcenter.org/our-mission/show-opportunities/?utm_source=PROJECTOR%206-27-13&utm_campaign=Projector&utm_medium=email)

**Rockville Innovation Center Call for Entries**

Rockville Innovation Center is interested in showcasing the work of local artists in their gorgeous location. The RIC is looking to fill its beautiful space with artwork by metro area artists and photographers.

<http://www.visartsatrockville.org/call-for-entries/feast>

**Eligibility:** Open; **Deadline:** Ongoing

**Entry Fee:** N/A

**Montpelier Arts Center.** Artists interested in exhibiting in the Main Gallery or curators who want to propose an exhibition should send a one page proposal, resume(s), and a CD of no fewer than 20 images to Main Gallery, Montpelier Arts Center, 9652 Muirkirk Road, Laurel, MD 20708.

[http://arts.pgparcs.com/Community\\_Arts\\_Services/Artist\\_Resources.htm?utm\\_source=PROJECTOR+6-27-13&utm\\_campaign=Projector&utm\\_medium=email](http://arts.pgparcs.com/Community_Arts_Services/Artist_Resources.htm?utm_source=PROJECTOR+6-27-13&utm_campaign=Projector&utm_medium=email)

**Eligibility:** Open; **Deadline:** Ongoing

**Entry Fee:** N/A

**DC Photo Grid.** The DC Photo Grid is an aggregated map of the city generated from user-submitted photographs, and the DC Crowd-Sourced Video Project offers a constantly looping portrait of the city as viewed by its inhabitants.

[http://www.dcphtogrid.com/?utm\\_source=PROJECTOR+6-27-13&utm\\_campaign=Projector&utm\\_medium=email](http://www.dcphtogrid.com/?utm_source=PROJECTOR+6-27-13&utm_campaign=Projector&utm_medium=email)

**Eligibility:** Open; **Deadline:** Ongoing

**Entry Fee:** N/A

**Art in the Alley**

Trinidad (NE DC) Community Arts Showcase

**Deadline: April 27, 2014**

For more information [click here](#).

.

**Hyattsville CDC**

Route 1 overpass public art project

**Deadline: May 5**

For more information [click here](#).

.

**Montpelier Arts Center**

Artist Studio Residency & Exhibition Proposal

**Deadline: May 5**

For more information [click here](#).

..

**NoMa BID**

“Spectacular Art Parks” in NoMa Underpasses

**Deadline: May 9**

For more information [click here](#).

.

**Hill Center Galleries**

Annual Regional Juried Show (Cash Prizes)

**Deadline: May 10**

For more information [click here](#).

.

**(e)merge art fair**

Artist Platform

**Deadline May 30**

For more information [click here](#).

.

**Art Enables Off Rhode Gallery**

Ward 5 Artist Exhibition

**Deadline May 30 at 5 p.m.**

For more information [click here](#).

..

**Lorton Town Center**

Art in the Courtyard (Artist Booths)

**Deadline: June 7, 2014**

For more information [click here](#).

***GLENVIEW MANSION CONFERENCE ROOM SHOWS***

You can show your artwork in Glenview Mansion for one month if you have received a 1<sup>st</sup>, 2<sup>nd</sup>, 3<sup>rd</sup> or honorable mention award in an RAL juried show. Starting in 2013, artists may have both rooms to exhibit in if a second artist doesn't sign up for the same month within two months of the show's start date; otherwise they will have one room. The receptions at Glenview mansion are 1:30-3:30 pm, on the Sunday after hanging! Preferred drop-off and pick-up times for Glenview Shows are from 9 am to 12 noon. Note: please contact the mansion management ahead of time if you wish to modify the drop-off or pick-up times.

For artwork delivery at the Glenview Mansion, please be prepared to unwrap your work and take the wrappings with you - there is no room to store packing materials at the Mansion. Please bring pliers (needle nose are easy to work with). There is no one to help move artwork from your vehicle to the conference rooms, however, you may use the hand truck that is at the Mansion. You are responsible for hanging your own artwork with help from the Mansion staff. If you have not made labels for your work, please fill out the RAL cards that will be available when you bring your work to the conference room. If you print your own, they should be on card stock. Please do not use the sticky Avery labels, unless you adhere them to foam core or card stock.

If you are unavailable on the appropriate date for pickup, please arrange with someone to pickup for you. There is no room to store your artwork at the Mansion after it comes down.

Please note that in 2014, drop off/pickup switches from Wednesdays to Mondays (unless Monday is a holiday).

Thanks - please contact Julie Farrell, Arts Programs Specialist at Glenview, with any questions. [jfarrell@rockvillemd.gov](mailto:jfarrell@rockvillemd.gov).

**If you need to contact Julie Farrell, please send an email to [jfarrell@rockvillemd.gov](mailto:jfarrell@rockvillemd.gov)** Please be aware that is no staff at the mansion available to help you move your artwork into the conference rooms and if you need assistance, you need to assist yourself! Or ask a friend to help you, or contact Julie about hiring a mover.

<b>2014</b>			
	<b>Drop off</b>	<b>Reception</b>	<b>Pickup</b>
May	April 28	May 4	May 27
June	May 27	June 1	June 23
July	June 23	June 29	July 28
August	July 28	August 3	Sept 2
September	Sept 2	Sept 7	Sept 29
October	Sept 29	Oct 5	Oct 27
November	Oct 27	Nov 2	Dec 1
December	Dec 1	Dec 7	Jan 5

Monday delivery and hanging: 9AM–12PM  
Sunday Gallery Opening: 1:30—3:30PM  
Wednesday Pickup: 9AM—12PM

**May 2014: RAL Spring Show**  
**June 2014: RAL Board Members' Show**  
**July 2014: Diane Jeang**  
**Aug. 2014: Open**  
**Sept. 2014: Jackie Austin**  
**Oct. 2014: Eric Gross**  
**Nov. 2014: Open**  
**Dec. 2014: RAL Winter Show**

*Glenview/Open Show Coordinator:* Diane Jeang, (301) 871-1589 E-mail: [swinedoc@yahoo.com](mailto:swinedoc@yahoo.com)

***RAL ONGOING SHOW LIST***

**Bank of America - 3200 Sandy Spring Road, Olney, Maryland**  
10-12 paintings, Contact: (301) 232-1370

**Twinbrook Library - 202 Meadow Hall Drive, Rockville, Maryland**  
Shows are now 1 month in length. 5 medium to large paintings, Contact person: Chris Lindy (240)-777-0240, [christinelundy@montgomerycountymd.gov](mailto:christinelundy@montgomerycountymd.gov)

**Rockville Community Services Office - 30 Courthouse Square Rockville, Maryland**  
10-12 medium to large paintings, Contact person: Carlos Aparicio (240) 314-8303

**Thomas Farm Community Center – 700 Falls Grove Drive, Rockville, Maryland**  
12-16 medium to large paintings, Contact person: Martha Coester (240) 314-8842

**Marilyn J. Praisner Library – 14910 Old Columbia Road, Burtonsville, Maryland**  
10 small to medium or 5-6 large paintings (10 hanging chains), Contact person: Vera Ramaty (240) 773-9455

**RAL Financial Report for 2013**

<u>ACCOUNTS</u>	<u>OPS BALANCE</u>	<u>GRANT BALANCE</u>
<b>SUNTRUST BANK</b>		
<b>Operating Funds</b>	<b>\$5,828.01</b>	
<b>GRANT Funds</b>		<b>\$734.86</b>
<b>Pay Pal Funds</b>	<b>594.71</b>	
<b>Website Tokens (Balance)</b> <b>(1 Token = \$2)</b>	<b>198 = \$396.00*</b>	
<b>TOTALS</b>		
<b>OPS FUNDS</b>	<b>\$6,878.12</b>	
<b>GRANT FUNDS</b>		<u><b>734.86</b></u>
<b>GRAND TOTAL(12/31/13)</b>		<b>\$ 7,553.58</b>

**EXPENDITURES 2013 (rounded)**

<b>SPEAKERS</b>	<b>\$700</b>
<b>NEWSLETTERS</b>	<b>71</b>
<b>REFRESHMENTS</b>	<b>239</b>
<b>MAY &amp; DEC. SHOWS</b>	
<b>JUROR</b>	<b>300</b>
<b>WALK-THRU</b>	<b>300</b>
<b>AWARDS</b>	<b>1290</b>
<b>REFRESHMENTS</b>	<b>310</b>
<b>PAY PAL REGISTRATIONS</b>	<b>430*</b>
<b>MISC.</b>	<b>97</b>
<b>POBOX</b>	<b>76</b>
<b>VIS ARTS (Fused Glass Workshop)</b>	<b>250</b>
<b>WEBMASTER</b>	<b>110</b>
<b>MANSION RENT</b>	<b>700</b>
<b><u>MC SCHOLARSHIP</u></b>	<b><u>750</u></b>
<b>TOTAL</b>	<b>\$5,613</b>

**Respectfully Submitted,  
Patricia Zannie, Treasurer**

---

## RAL BOARD OF DIRECTORS

<u>Position</u>	<u>Name</u>	<u>Phone</u>	<u>e-mail</u>
<b>President:</b>	Liliane Blom	301-518-5312	<a href="mailto:lilianeblom@aol.com">lilianeblom@aol.com</a>
<b>1<sup>st</sup> VP/Show coordinator:</b>	Marian Mackerer	301-590-9437	<a href="mailto:mackerer@comcast.net">mackerer@comcast.net</a>
<b>Treasurer</b>	Patricia Zannie	301-962-8581	<a href="mailto:patriciacollages@yahoo.com">patriciacollages@yahoo.com</a>
<b>Secretary</b>	Fred Ruckdeshel	301-320-3911	<a href="mailto:krisfred1963@yahoo.com">krisfred1963@yahoo.com</a>
<b>Membership</b>	Susan Dunnell	301-949-1514	<a href="mailto:dunnz@erols.com">dunnz@erols.com</a>
<b>Publicity/mkt.</b>	Nadia Azumi	301-538-0062	<a href="mailto:nadia@nadiasilk.com">nadia@nadiasilk.com</a>
<b>Newsletter editor</b>	Susan Dunnell	301-949-1514	<a href="mailto:dunnz@erols.com">dunnz@erols.com</a>
<b>Program coordinator</b>	Jorge Bernal	301-523-4141	<a href="mailto:jorgeluisbernal@gmail.com">jorgeluisbernal@gmail.com</a>
<b>Communications committee</b>	<b>VACANT</b>		
<b>Open shows</b>	Diane Jeang	301-871-1589	<a href="mailto:swinedoc@yahoo.com">swinedoc@yahoo.com</a>
<b>Glenview member shows</b>	Diane Jeang	301-871-1589	<a href="mailto:swinedoc@yahoo.com">swinedoc@yahoo.com</a>
<b>Hospitality</b>	Martha Campos	301-266-4670	<a href="mailto:ximenace@verizon.net">ximenace@verizon.net</a>
<b>Historian</b>	Patria Baranski	301-424-6193	
<b>Web master</b>	Noble	301-661-2739	<a href="mailto:noble@artofnoble.com">noble@artofnoble.com</a>
<b>Founder, Hon. lifetime member</b>	Eileen Mader	301-762-6458	





# 2014 RAL Members Show Agreement

I agree to the rules of the show as presented in this announcement, that my entries are my original works, and that I will not hold RAL or The Glenview Mansion or City of Rockville responsible for any possible loss or damage to my entries while on the property. I understand that all reasonable care will be taken in handling entries. I give RAL permission to photograph my artworks and publish on the website.

**Please print legibly so the information is easily and accurately read. Thanks!**

Printed Name \_\_\_\_\_ Date \_\_\_\_\_

Signature \_\_\_\_\_ Phone \_\_\_\_\_

Address \_\_\_\_\_

### I am entering the following work(s):

**Work 1:**  
Title \_\_\_\_\_

Medium \_\_\_\_\_ Price \$ \_\_\_\_\_ Value \$ \_\_\_\_\_

**Work 2:**  
Title \_\_\_\_\_

Medium \_\_\_\_\_ Price \$ \_\_\_\_\_ Value \$ \_\_\_\_\_



# ROCKVILLE ART LEAGUE

### Attach one 2-column form to each entry:

Tape form to the back upper right corner of each work. The left side will be cut off later-after the judging-and used to compile the program.

-----CUT ALONG THIS DOTTED LINE-----

Program Info – Do NOT put any tape on this left side!      Attach tape to right side of this form and tape to back upper right corner of your work.

**Work 1:**  
ARTIST \_\_\_\_\_

ARTIST \_\_\_\_\_

TITLE \_\_\_\_\_

TITLE \_\_\_\_\_

MEDIUM \_\_\_\_\_

MEDIUM \_\_\_\_\_

PRICE \$ \_\_\_\_\_ VALUE \$ \_\_\_\_\_

-----CUT ALONG THIS DOTTED LINE-----

Program Info - Do NOT put any tape on this left side!      Attach tape to right side of this form and tape to back upper right corner of your work.

**Work 2:**  
ARTIST \_\_\_\_\_

ARTIST \_\_\_\_\_

TITLE \_\_\_\_\_

TITLE \_\_\_\_\_

MEDIUM \_\_\_\_\_

MEDIUM \_\_\_\_\_

PRICE \$ \_\_\_\_\_ VALUE \$ \_\_\_\_\_

# CALENDAR

### Show:

May 4, 2014 – May 26, 2014

### Delivery of works:

Tuesday, April 29, Noon – 2 PM  
and 5 – 7 PM

### Hotline for pickup list:

Wednesday, April 30, after 2 PM  
**240-314-8682**

### Pickup of unaccepted works:

Thursday, May 1, Noon – 2:00PM  
and 4:30 – 6:30PM

### Opening Reception:

Sunday, May 4, 1:30-3:30 PM  
Awards at 2 PM  
Followed by light refreshments

### Judge’s Gallery Walk Through

Thursday, May 1, 6:30 PM

### Final Pickup:

Tuesday, May 27, 2014  
Noon – 2 PM and 5 – 7 PM