



RockvilleArtLeague.org Vol. XXII No. 5 January 2013

THERE IS NO MEETING IN JANUARY!!!
NEXT MEETING - THURSDAY, February 7 at 6:30pm

MESSAGE FROM THE PRESIDENT LILIANE BLOM

Dear fellow artists and art lovers,

Change is in the air at RAL, so mark your calendars, first remember there is **no January meeting** and second **we are changing the time for our monthly meetings from 7:30 to 6:30 PM.**



They will still be held the first Thursday of the month, but to accommodate members who have found our previous start time of 7:30 too late, we are trying an earlier time and hope more of you can join us.

Another beautiful RAL show has graced the walls of the Glenview Mansion, I hope you all had the opportunity to view it - the walk through with the judge was both enlightening and helpful to our members, who pelted her with questions. I want to remind those of you who did not get into the show or were unable to submit, that these walk-throughs are very educational and might just give you the insight you need to get into the next show.

The board is discussing raising the \$ amount of the first place winners of the shows and would like some feedback from the league on this - do you think a larger purse would attract more members? We need to replenish our ranks, particularly with younger members or we will go the way of the dinosaur. Let us know what ideas you might have to make RAL relevant to you.

We are looking for those of you with a vision to take RAL into the future, let us know if you are interested and would like to come to attend a board meeting. The January dinner meeting is particularly conducive to meeting and greeting the current board, as we meet in a relaxed atmosphere over dinner and drinks.

My term as President is running out in May, I need someone to step up to the plate. If you think you might be interested let's talk, it's a fun job and not that much work. Call me with your questions at: 301-518-5312.

Please let us know if this is of interest: a one or two day workshop to be held at Visarts sometime in the spring:

One Day Collage Workshop with Katie Dell Kaufman

Explore collage as a contemporary fine art medium!

Liliane Blom – President, RAL

December 2012 Juried Member Show

Juror: Phyllis Plattner



Best in Show: Liliane Blom, Dancing in the Light

Oils and Acrylics:

- 1st, Robert LeMar, Pocomoke Mist
- 2nd, Jane Preece, Waiting
- 3rd, Irene Glaser, Purple Iris
- HM, Geri Olson, Pass it On
- HM, Leslie Kraff, Sneakers 3
- HM, Annette Weiner, Lavender Fields

All Watercolors:

- 1st, Karen Norman, Key in Red
- 2nd, Pat Kagan, Reflection
- 3rd, Elise Chang, Mountain Paradise
- HM, Diane Rudzinski, Sous-Chef
- HM, Pat Kagan, Frozen Section
- HM, Linda Greigg, Brookside Path

Pastels, Drawings, and Hand Pulled Prints:

- 1st, Martin Slater, Alone
- 2nd, Maurice Margulies, Potomac Palisades
- 3rd, Noble, Homeward Hope
- HM, Gale Bell, Three Women
- HM, Maurice Margulies, Potomac Gorge

Mixed Media, Collage, Experimental, and Original Computer Generated Art:

- 1st, Patricia Zannie, September Splendor
- 2nd, Eric Goss, Real Estate
- 3rd, Liliane Blom, Sleeping Beauty
- HM, Paul Broadstone, The Other Side of the Glass

Sculpture and Ceramics:

- 1st, Frances Lederer, Standing Woman
- 2nd, Marty Scheinberg, Contemplation
- 3rd, Sally Giarratana, Raku Tall Basket
- HM, Lois Levitan, Primal Instinct #4
- HM, Barbara Hughes Meima, Celtic Form III

Congratulations to all the members! Our judge, Phyllis Plattner, selected a wonderful show. A total of 179 pieces were registered and 106 were accepted. Thank you to the all the volunteers who made this show a success.

Please remember to pick up your artworks at Glenview Mansion on Wednesday, January 2, 2013, from 10:00 am to Noon AND 5:00 to 7:00 pm.

VOLUNTEERS NEEDED for 2013 STUDENT ART SHOW

As in years past, the Rockville Art League and the City of Rockville co-sponsor the annual

Rockville Student Art Show. Many volunteers are needed to make this a success. As you can see from the list below there are many different jobs, very similar to our own member show. Volunteering for this show will waive the \$5 entry fee for the May member show. If you are interested please contact me at 301-590-9437, or email at mackerer@comcast.net.

Thank you, Marian MacKerer

Sunday, February 24, 1:30-3:30
10 volunteers to register artwork
4-5:30
2 volunteers to consolidate work to 2nd floor

Wed., February 27, Noon - 2:00
4 volunteers to hang artworks and proof program
2:00 - 4 p.m.
4 volunteers to hang artworks and proof program

Thur., February 28, 10 -Noon
4 volunteers to hang, and write certificates/ribbons
2 to 4 p.m.
4 volunteers to hang, and write certificates/ribbons

Fri., March 1, 10-Noon
2 volunteers for tagging artwork

Sun., March 3, 1:30 – 3:30 p.m.
2 volunteers to assist in presenting ribbon awards and certificates of participation

Thurs., March 21, 3-5 p.m.
2 volunteers to oversee pick-up of artworks
5- 7 p.m.
2 volunteers to oversee pick-up of artworks

Critique by Penny Kritt

If you would like a critique, please email a photo to me at pennykritt@aol.com. Perhaps your work will be chosen for next month! Please submit your work early so I have time to write the column for the next issue.

We get to try something completely different this month, thanks to abstract painter Paul Broadstone, Jr. Luckily, the same concepts apply to abstracts and realism, so even if “you just don’t get abstraction”, these pointers will work for you, too.



Sacrifice

Enamel and Acrylic on Canvas
By Paul Broadstone, Jr.

I asked Paul what inspired him to create this image. He said he had been thinking about the idea of sacrifice. He wondered about cultures that kill animals to appease their dieties and what it must have felt like to witness such an event. He chose the easily recognizable symbol of the sacrificial lamb to illustrate his thoughts.

Starting out with a strong opinion or emotion helps the artist define what needs to be in the composition. Paul could have included more lambs or added other animals that are sacrificed, but it wouldn’t add to the power of his idea. He correctly chose to limit the number of shapes to make a

stronger impact. If he had chosen any other color for the “blood” shape, maybe green or purple, the viewer would have been confused by it. Having a strong opinion and limiting shapes and colors will sharpen what you have to say.

Paul has made good use of the picture space. He has limited the composition to three main shapes – the lamb, the angel and the pool of red blood. If you look closely, you can see that he used silver enamel with a matte finish to provide a textured background on the canvas. It’s a little “goodie” for the viewer to enjoy, but it’s subtle and doesn’t conflict with the concept. The small black shape in the upper right corner serves as a place holder and provides continuity with the black outline of the angel. He also just provided a suggestion of the angel and the lamb so the viewer would concentrate on the symbolism and not be distracted by any mistakes in the realistic portrayal of the figures.

Paul has used few shapes, and he did it well. They are different sizes and go in different directions. The small black shape moves your eye down. The lamb is medium sized and runs horizontally. The blood shape is about the same size as the lamb, but it is vertical. And the large angle makes an interesting diagonal shape.

Obviously, Paul felt something was missing since he submitted the work for critique. So let’s consider what his objectives were and see if we can make a stronger statement.

Suggested Changes:

In the original above, the angel seems to come down to comfort the lamb. In the version below, the image is just horizontally flipped. Now it appears that the angel is coming down to lead the lamb to heaven and the painting suddenly takes on a more positive, redemptive note.



The pool of blood overlaps the angel’s hair and rises up, and it may confuse the viewer into thinking that the angel is bleeding.

Look below for the next change. Let’s move the blood shape horizontally under the lamb to clarify who’s doing the bleeding. Note that the blood is directly under the lamb. If that red shape had been moved to the right and under the angel, it might have led the viewer’s eye right out of the painting.

Small changes to the ears and tail make it clear that this is a painting about a lamb. Paul’s drawing of a more generic animal might cause the viewer to go off on a tangent wondering what kind of animal was shown. This would have distracted from the drama and simplicity of his work.



Now Paul's shapes let the viewer circle the composition and lead him back around to enjoy it again. Western viewers (as opposed to those who read Chinese or Hebrew, for example), usually enter a painting at the upper left. The black shape directs you down to the lamb. The lamb's head – and especially its eye – point you diagonally to the angel. As you move to the angel, her hair directs you through her body until the subtle curve of her hand sends you back to the black shape at the upper left so you swing back to take another look.

Your composition will always be stronger when you have a specific idea to present. Do a few quick sketches to see how many shapes you need, then decide where and how to place them. Sometimes our work gets too busy because we add shapes that may explain a little more about what's going on, but they really aren't necessary. Get rid of them!

If you'd like to join a group that offers weekly critiques, please contact me at the number below. All levels of artists are welcome.

For classes or private lessons, contact Penny at 301/989-Texture 1799.

BARTER BIN

Laura Chassy has for sale:

Moulding/Frames; Neilson black metal: \$30 per frame; sets of plastic frame clips: \$5 per set; cans of black spray paint: \$1 a can; and stained glass equipment: \$50. Laura may be contacted at (301) 589-8058 or laura.chassy@yahoo.com

Irene Glaser has 40" and 52" long heavy duty canvas stretcher strips she would like to swap with anyone who has extra 36" long strips. Contact her at: 301-983-1699 or icglaser@verizon.net.

ART CLASSES



Patricia Zannie Classes: Spring 2013

Visual Contributions from Ancient Cultures— Part I

Culture is an important factor in every civilization, including the integration of the indigenous artistic experience. You will explore and analyze the expressive, symbolic, decorative and aesthetic aspects of visual designs, archeological artifacts, and creative techniques. Achievements and contributions of ancient cultures throughout the world, including Celtic, Egyptian, Aegean, Near East, Indian, Chinese, and Japanese, will be explored. Through this study you will gain a deeper understanding and greater appreciation for the various art forms and their historical development. You will investigate the various theories, methods and techniques used by the indigenous people and employ the techniques of collage to adapt these concepts to modern times and integrate your designs into an original artwork of your own.

Course: ADS356 21 Hours

\$145 + \$70 fee = \$215; Non-MD residents add \$140

Takoma Park/Silver Spring Campus

CRN#:35458 7 Sessions

1/29-3/12 T; 234 CF 9AM-12PM

Part II

This course is a continuation of the course above. *You do not have to take Part I in order to take Part II.* In this course you will investigate and analyze the diverse early civilizations of Africa, Australia, Polynesia, North America, Meso-America, South America and Eastern Asia. Some supplies provided. No prerequisites.

Course: ADS356 21 hours

Same fees/campus

CRN#35472 7 Sessions

3/26-5/7 T; 234 CF 9AM-12PM

Modern Rebel Artists That Changed Art Forever—Part I

In less than a century, a handful of modern European-based artists rebelled against the traditional Western concepts of visual beauty and aesthetics while redefining the long standing meaning of the visual arts. In this innovative course you will explore and analyze the expressive, symbolic, decorative, and aesthetic aspects of the artwork of these rebels as they conflicted with the Western classic concepts. You will gain a deeper understanding and appreciation of artistic innovations, such as flattening the picture plane; using subjective, raw color; and expressing subconscious feelings. You will employ the techniques of collage to adapt these concepts to develop original artworks. The Impressionist, Post-Impressionist and Fauvist Movements will be focused upon.

Course: ADS358 21 Hours

CRN#: 35473 7 Sessions

1/31-3/14 R; 234 CF 9AM-12PM

Part II

A continuation of Part I, but you do not need to take Part I to take Part II. Focus on Expressionism, Cubism, Abstraction, Dadaism, and Surrealism.

Course: ADS359 21 Hours

CRN#: 35474 7 Sessions

3/28—5/9 R; 234 CF 9AM-12PM

Tuition waiver applies for all classes; seniors pay fee only for all classes.

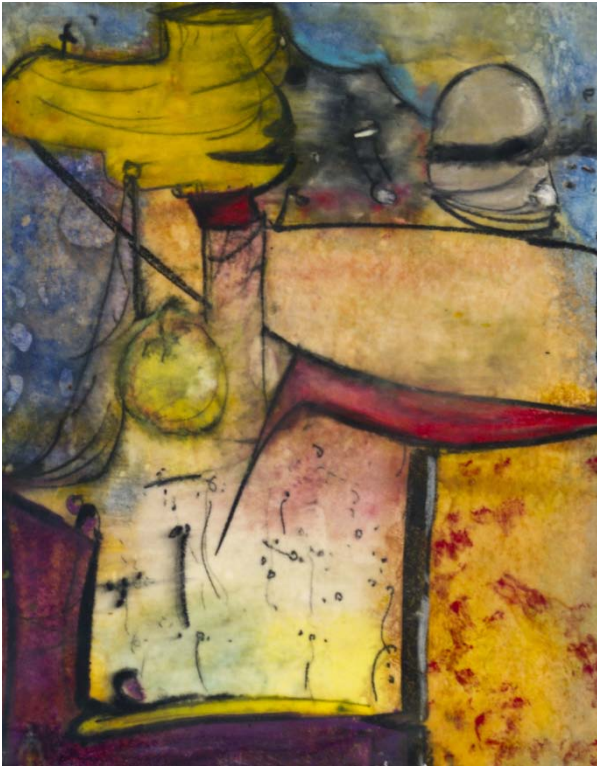


Nadia Azumi, local chapter president of Silk Painters International for MD, VA, and DC, holds meetings, workshops and classes in silk painting at her residence in Rockville. For more information please contact her at:

nadia@nadiasilk.com

MEMBER NEWS

Lois Levitan has two sculptures at Strathmore Artists' Exhibition. The opening reception is on Sunday, January 13, 2013 from 2-4 PM at the Strathmore Mansion. **Jorge Bernal** and **Diane Jeang** also are featured at this juried show.



Jorge Luis Bernal/ encaustics

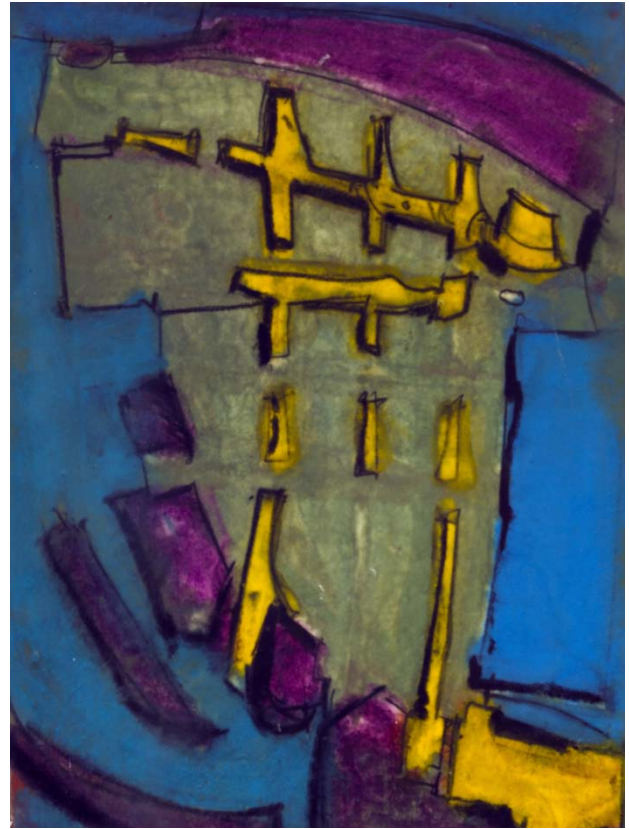
Upcoming Exhibits:

Solo Show- “Places of Worship”

Rockville Art League (RAL) Glenview
Mansion, Jan. 4 – 31, 2013.

Reception on Sunday, Jan. 6, 1:30-3:30 PM

Temples, synagogues, churches and mosques are spaces where we come to pray, reflect, perform acts of reverence, study and honor our beliefs. These sacred spaces have maintained a structure, a basic design or shapes over thousands of years. Today’s society is challenging the architectural styles of our religious buildings, but more importantly our beliefs, faith and spirituality.



Capitol Hill Art League (CHAL) Juried Show
at the Hill Center, Jan. 12- Feb. 25, 2013

Opening Reception: Thurs., Jan. 17, 6-8 PM

Hill Center at the Old Naval Hospital 921
Pennsylvania Avenue, SE, Wash., DC 20003.

ARTIST STATEMENT

My artwork explores the realms and depths of my dreams, beliefs, spirituality and my daily life journey. These paintings represent personal archetypes communicated through historical, architectural and mythological symbolism. My goal is for a story to unfold through layered abstractions.

The art I create is not meant to be literally narrative. It is left open to individual interpretation and, hopefully, self-discovery of what is hidden or, conversely, only partially revealed. In art as in life, it is not so much what is said, but what is not. I consider my work

visual conversations about life, the meaning of spirit, God and faith.

A Work of Art by Debra Halprin



Gicleé Printing/Photography Services

Create Fine Art Prints of your Paintings

On Watercolor Paper or Canvas

.09 cents per sq. inch on paper

.12 cents per sq. inch on canvas

\$25 Photography Fee Includes

Proofs and Color Enhancement

For All Your Fine Art Gicleé Printing Needs

www.halprinart.com

301-260-9701

**200 Rosalie Cove Court
Silver Spring, MD 20905**

CHANGE/NEW E-mail ADDRESS or street address? If you have an e-mail address, please inform me, please send address or e-

mail changes to Susan Dunnell at dunnz@erols.com.

ART OPPORTUNITIES

Amici Mie Restaurant Wall Space

Bernie Wilder has secured ongoing prime wall space at the Amici Mei restaurant in Potomac Woods shopping center on Seven Locks Road near Montrose Avenue. All members can have their work judged for entry and displayed for a two month period throughout the coming year. A commission will be charged, half of which will benefit Montgomery County Child Welfare. There is also a fee involved to help cover the marketing costs (advertising, grand opening). If interested, please contact Bernie directly at: bswilder@comcast.net



Betty Mae Kramer Gallery Opens New Exhibition

December 3-January 25, 2013

The Arts and Humanities Council of Montgomery County (AHC MC) announces the opening of “**Fragility**,” a new exhibition at the [Betty Mae Kramer Gallery and Music Room](#) inside the Silver Spring Civic Building in downtown Silver Spring. The opening reception will be held **Thursday, December 13 from 5:30 to 7:30 pm** at the Gallery. The public is invited to this free event.

“**Fragility**” features the work of two established Montgomery County artists: Nancy Weisser, a glass artist, and Woody Woodroof, a photographer. Both artists use unconventional materials and processes to create work that

speaks to human and environmental vulnerability, an inner and outer fragility. Nancy Weisser will be creating a mixed-media installation specifically for this exhibition fashioned from vitrograph, strands of glass that Weisser “draws” with. Woodroof has also pushed the boundaries of his medium, photography. Without the aid of a dark room, Woodroof creates banner-like cyanotype photograms of both non-native and native plants found on and near the farm where he lives and works. Printed on hemp, the delicate images appear on both sides of the fabric, ghost-like silhouettes of botanical specimens.

Nancy Weisser

Nancy Weisser is an award winning multimedia artist with a focus on glass since 1980. She has created many artworks for exhibitions and private collections. Recent works include installations and paintings. In 2010 Nancy was honored when awarded placement in *New Glass Review*, an international publication by the Corning Museum of Glass highlighting the past years 100 top entries of glass. Nancy is known not only as a skilled and distinguished artist but also as an outstanding educator and entrepreneur. She owns and operates a successful glass business that includes a gallery, a teaching studio, supply house, and artist studio.

Nancy studied fine art at University of Pittsburgh and Studio Arts at Indiana University of Pennsylvania. Shortly after moving to the Washington DC area in the late seventies Nancy began working with glass. As owner of Weisser Glass Studio, one of the original teaching studios in the area Nancy has made a substantial contribution to the dynamic growth of the Washington DC glass community.

Woody Woodroof

Woody Woodroof has been involved with alternative and 19th century photographic processes since the early 1990's. Today Woody creates large scale cyanotype photograms of both non-native and native plants and native grasses found on and near the farm where Woody lives and works. Woody's experience as an organic vegetable farmer since founding Red Wiggler Community Farm in 1996, informs his creative process. His recent work explores the ironic beauty of our unintended consequences, derived from human efforts to control our environment with solutions imported from lands far away.

Woody grew up in Richmond, Virginia and earned his BFA in Studio Art and Photography in 1988 from Denison University. Recent one person exhibitions include: "Invasives" at Quick Gallery, Richmond, VA, September 2011 and "Field Work" at the Ogden Museum of Southern Art, New Orleans, LA, April 2012. In August, Woody's work was featured in *South x Southeast Photomagazine* Volume I Issue III, an in-print quarterly magazine that explores fine art photography in the American Southeast. Woody is a farmer and artist living in Montgomery County, MD.

ABOUT THE BETTY MAE KRAMER GALLERY AND MUSIC ROOM

The Betty Mae Kramer Gallery and Music Room is a tribute to the former First Lady of Montgomery County who passed away in March 2010. Mrs. Kramer was an active patron of the arts. She led the volunteer efforts to establish the Executive's Ball for the Benefit of the Arts in 1986 when her husband, the Honorable Sidney Kramer, was elected County Executive. Since then, the Ball has raised more than \$1 million to benefit a variety of nonprofit arts and humanities organizations.

A collaborative venture between the AHCMC and Montgomery County government, the Kramer Gallery occupies a unique place in Greater Washington's arts community. It is the first and only art gallery dedicated specifically to showcasing Montgomery County's professional visual artists. Although the gallery was built as an integral part of the Silver Spring Civic Building, the expenses of operating the gallery are entirely the responsibility of AHCMC. Major donors to the gallery include the Kramer Family, GEICO and Montgomery County with other gifts from Fran and Hillel Abrams, Joseph Adler, Ike and Catherine Leggett, Senator and Mrs. Laurence Levitan, Lawrence Resemble, Bobbi and Larry Shulman, and Sami and Annie Totah. To make a donation to the Betty Mae Kramer Gallery and Music Room, please contact Suzan Jenkins, CEO of AHCMC, at 301-565-3805 ext. 23.

###

Arts and Humanities Council of Montgomery County/801 Ellsworth Drive, Silver Spring, MD 20910

www.creativemoco.com

www.montgomerytraditions.org

www.doandgo.org

GLENVIEW MANSION CONFERENCE ROOM SHOWS

You can show your artwork in Glenview Mansion for one month if you have received a 1st, 2nd, 3rd or honorable mention award in an RAL juried show. Starting in 2013, artists may have both rooms to exhibit in if a second artist doesn't sign up for the same month within two months of the show's start date; otherwise they will have one room. The receptions at Glenview mansion are 1:30-3:30 pm, on the Sunday after hanging! Preferred drop-off and pick-up times for Glenview Shows are from 9 am to 12 noon. Note: please contact the mansion management ahead of time if you wish

to modify the drop-off or pick-up times. Please note: There is a new show at the Marilyn J. Praisner Library starting February 15; and the Innovation Center is no longer participating in the ongoing shows for RAL.

GLENVIEW CONFERENCE ROOM SHOW

Wednesday delivery and hanging: 9AM–12PM

Sunday Gallery Opening: 1:30—3:30PM

Wednesday Pickup: 9AM—12PM

January 2013: Jorge Bernal (2)

February 2013: Regina Price

March 2013: Rockville Student Show

April 2013: Susan Moses

May 2013: RAL Spring Show

June 2013: RAL Board Members' Show

July 2013: Diane Jeang (2)

August 2013: Joanie Grosfeld (2)

September 2013: Open

October 2013: Lieta Gerson/Muriel Ebitz

November 2013: Pat Kagan (2)

December 2013: RAL Winter Show

ON-GOING SHOWS

PLEASE NOTE: I will keep updating this list; just email me if you need a current list. The Twinbrook Library now has one month shows; contact Twinbrook to sign up. I have forms for signing up with new establishments. I would need to know the name of the place, contact person, what type of artwork, how many, and any restrictions. Doctors, dentists, law offices and other businesses are good places, as well as restaurants and banks. Bookstores are also excellent. We may be considering some places that would require jurying (but we would continue the tradition of the “open” shows of course).

Diane Jeang

Glenview/Open Show Coordinator (301) 871-1589 E-mail: swinedoc@yahoo.com

RAL ONGOING SHOW LIST

Bank of America - 3200 Sandy Spring Road, Olney, Maryland

10-12 paintings, Contact: (301) 232-1370

<u>Name</u>	<u>From</u>	<u>To</u>
Open	Oct. 15, 2012	Feb. 15, 2013
Vatsala Menon	Feb. 15, 2013	Apr. 15, 2013
open	Apr. 15, 2013	Aug. 15, 2013

Twinbrook Library - 202 Meadow Hall Drive, Rockville, Maryland

Shows are now 1 month in length. 5 medium to large paintings, Contact person: Chris Lindy (240)-777-0240, christinelundy@montgomerycountymd.gov

<u>Name</u>	<u>From</u>	<u>To</u>
Open	Jan. 15, 2013	Aug. 15, 2013

Rockville Community Services Office - 30 Courthouse Square Rockville, Maryland

10-12 medium to large paintings, Contact person: Carlos Aparicio (240) 314-8303

<u>Name</u>	<u>From</u>	<u>To</u>
Open	Jan. 15, 2013	Aug. 15, 2013

Thomas Farm Community Center – 700 Fallsgrove Drive, Rockville, Maryland

12-16 medium to large paintings, Contact person: Martha Coester (240) 314-8842

<u>Name</u>	<u>From</u>	<u>To</u>
Virginia Montet	Oct. 15, 2012	Dec. 15, 2012
Valthea Fry	Dec. 15, 2012	Feb. 15, 2013
Valthea Fry	Feb. 15, 2013	Apr. 15, 2013
Open	Apr. 15, 2013	Aug. 15, 2013

Marilyn J. Praisner Library – 14910 Old Columbia Road, Burtonsville, Maryland

10 small to medium or 5-6 large paintings (10 hanging chains), Contact person: Vera Ramaty (240) 773-9455

Open Name From To
Jan. 15, 2013 Aug. 15, 2013

RAL BOARD OF DIRECTORS

<u>Position</u>	<u>Name</u>	<u>Phone</u>	<u>e-mail</u>
President:	Liliane Blom	301-518-5312	lilianeblom@aol.com
1st VP/Show coordinator:	Marian Mackerer	301-590-9437	mackerer@comcast.net
Treasurer	Patricia Zannie	301-962-8581	patriciacollages@yahoo.com
Secretary	Fred Ruckdeshel	301-320-3911	krisfred1963@yahoo.com
Membership	Susan Dunnell	301-949-1514	dunnz@erols.com
Publicity/mkt.	Nadia Azumi	301-538-0062	nadia@nadiasilk.com
Newsletter editor	Susan Dunnell	301-949-1514	dunnz@erols.com
Program coordinator	Jorge Bernal	301-523-4141	jorgeluisbernal@gmail.com
Telephone liaison	Irene Glaser	301-983-1699	icglaser@verizon.net
Open shows	Diane Jeang	301-871-1589	swinedoc@yahoo.com
Glenview member shows	Diane Jeang	301-871-1589	swinedoc@yahoo.com
Hospitality	Martha Campos	301-266-4670	ximenace@verizon.net
Historian	Patria Baranski	301-424-6193	
Web master	Noble	301-661-2739	noble@artofnoble.com
Founder, Hon. lifetime member	Eileen Mader	301-762-6458	

