



RockvilleArtLeague.org Vol. XXII No. 3 November 2012

**NEXT MEETING - THURSDAY, November 1 at 7:30pm**  
"Silk Painting," presented by Nadia Azumi

## MESSAGE FROM THE PRESIDENT LILIANE BLOM

Dear fellow artists and art lovers,

**We have a wonderful program lined up our November meeting!**



After a demo by our very own Nadia Azumi who will be teaching us the art of silk painting, we will each get a stretched piece of silk to experiment with. We will each create a Christmas tree

ornament which will be used to decorate the traditional RAL Christmas tree at Glenview mansion. This will not only be a lot of fun, but I expect our best Christmas tree yet. You may

pick up the ornament at our February meeting or donate it to RAL.

Calling all interested members: My term as President is running out in May, I need someone to step up to the plate. If you think you might be interested let's talk, it's a fun job and not that much work. Call me with your questions at: 301-518-5312.

We would love to hear from more of you, on what you would like our organization to be, what it means to you and where we should be heading in the future. We have several things cooking for the next calendar year and would like more of our members to get involved.

**Please let us know if this is of interest to you, if we get enough interested members a workshop will be held at Visarts:**

*One Day Collage Workshop with Katie Dell Kaufman*

Explore collage as a contemporary fine art medium!

This one day workshop introduces the participant to a range of collage materials and techniques. Beginning with simpler, altered and found paper collages, demonstrations progress to surface textures, working with transparency and translucency, image transfer, and integration of alternative (non-art) materials. There will be discussion and demonstration of a variety of adhesion methods, including organic adhesives, polymer gels and mediums and encaustic wax medium.

Participants explore composition and color in collage, create unique collage works and learn about the materials and practices of collage artists of the last and current centuries.

On-going feedback supports the participant as they explore the integration of color, composition and new media.

This is a great chance for artists who are curious about combining photos, found, altered, art and non-art materials in a single art medium. No experience required.

We are planning open drawing sessions in Rockville town square for next spring, and are looking for members who would like to lead these sessions (and get paid for their instructional time), we would also like a few volunteers to assist the instructor.

We have some great news to share. RAL has been awarded a grant to continue our virtual tour for the juried December show from the Montgomery County Arts and Humanities Council. Several board members attended a special ceremony on October 22 to honor the awardees.

The revised bylaws were adopted at the last meeting and you can now peruse them at your leisure at our website.

Liliane Blom – President, RAL

---

**NOVEMBER MONTHLY  
MEETING  
November 1 at 7:30 PM  
NADIA AZUMI, SPEAKER**

---

**RAL ARTIST OF THE MONTH –  
NADIA AZUMI**



When I look at blank canvas, images slowly start to appear. With a stroke of my brush, my vision is transpired into the canvas as I paint. Silk painting was

the next step for me, since I had studied and worked with Japanese artists for over 34 years. I've always had a passion for art and creating my own designs.

With a diverse background of artistic experience, my objective in silk painting is to branch the two worlds of Italian Renaissance and the beautiful colors and lines found in Japanese Kimonos. These two cultures have helped influence my life.

As you will see in my paintings, I use a number of techniques and colors to create a variety of silk paintings. The Italian Renaissance is very apparent in the painting known as, "Carnevale di Venezia." With rich colors which were inspired by the frescos in Pompeii and the

Renaissance painters of Florence and Venice, this is my version of an Italian mask.



In other paintings, I use vibrant colors to depict floral arrangements I have created in the past with Japanese Ikebana. Different chemicals, acrylics, and different techniques are what help create different types of textures and lines. I also use Murano Glass in my silk painting.



I look at colors and nature's beauty and everything inspires me to paint. When I see something I like, be it in color or nature, I try to transfer this to silk painting – "Think outside the box, create." See the beauty around you and through your heart and soul. "Vision what you want to do," as my professor at Academy of Art University would always say. I enjoy painting with brushes, seeing what the dyes do on plain white silk.



Animals and landscapes are another inspiration I use for my artwork. Colorful birds or animals with details patterns just like in artwork between “Siberian Tiger.”



I know that I have unlimited techniques to learn and master, and I also know that everything is possible with practice and having a dream. I hope this provides you with a little bit information on why silk painting is such a passion in my life. As I have enjoyed and loved

painting, I am hoping that people will enjoy them as well.

Please visit my web site at:

[www.absolutejapan.com](http://www.absolutejapan.com)

### **RAL MEMBER ART SHOW**

December 2, 2012 – December 31, 2012  
Glenview Mansion Art Gallery, Rockville  
Civic Center

**Judge:** June Linowitz will be our judge for the December Member Art Show. Ms. Linowitz is an artist, past gallery director, business person and an active member of the Washington Art Community. As a founder of ArtSeen, Inc., Ms. Linowitz represents over 300 artists selling and leasing original fine art to corporations. She will conduct a gallery walk-through on Thursday, December 6, at 7:30 PM.

**Eligibility and Rules:** Each member in good standing (that means you have paid your dues!) may enter two works. The maximum length of any framed side is 60 inches. A work having multiple framed parts must meet the two works per member criteria. Diptychs will count as two works. Triptychs can only be accepted if they are connected and follow the size requirement. Only original works securely framed with hanging wire are acceptable. No photographs, no reproductions, no giclées and no wet canvases are allowed. The entries must have been completed within the last two years and may not have been exhibited previously in a juried RAL Member Show. Entries not meeting the show conditions will not be accepted. Artist’s signature on the Show Agreement also constitutes a commitment to donate 20% of the sale price to the City of Rockville for works sold during or as a direct result of the show. Awards given are Best in Show; first, second, third in all categories; honorable mentions at the judge’s discretion.

## Categories:

- oils and acrylics
- watercolors
- pastels, drawings, and hand pulled prints
- mixed media, collage, experimental, and original computer-generated art
- sculpture and ceramics.

**Delivery:** Wednesday, November 28, 12 noon - 2 PM and 5 – 7 PM. Register and deliver your work to the second floor Glenview Mansion Art Gallery, Rockville Civic Center.

On Thursday, November 29, please phone the pickup hotline after 2 PM, 240-314-8682.

If your number is listed then you or your designee must pick up your work on Thursday, November 29, 5-7 PM or Friday, November 30, 10 AM - Noon.

**Reception:** Sunday, December 2, 2012 from 1:30-3:30 PM. Presentation of awards at 2 PM. Light refreshments to follow.

**Gallery Walk Through:** Thursday, December 6, 2012 at 7:30 PM.

**Final Pick Up:** Wednesday, January 2, 2013, 10AM –12 Noon and 5-7 PM. Your work must be picked up. Please have your designee pick up your work if necessary. Any work left after Wednesday noon will not be insured. There is no storage available.

**Sales:** The Glenview Mansion staff will manage art sales. Artist's signature on the Show Agreement also constitutes a commitment to donate 20% of the sale price to the City of Rockville for works sold during or as a direct result of the show.

We still need volunteer help in these positions:

- Delivery of artworks: Wednesday, November 28, 12 noon - 2 PM
- Moving artwork: Thursday, November 29, 9 AM - noon
- Hanging artwork, typing program, writing ribbons: Thursday, November 29, 12 – 4 PM
- Releasing unaccepted artwork to artists: Thursday, November 29, 5 - 7 PM
- Releasing unaccepted artwork to artists: Friday, November 30, 10 - 12 noon
- Hostesses for the reception, contact Martha Campos, [ximenace@verizon.net](mailto:ximenace@verizon.net)

Most of the time slots are two hour shifts except for Thursday when the judging and hanging are done. If you can only work two hours we can still use your help. We will need the most help those days. Please check your calendar! A sign-up sheet will be passed around at the October meeting or feel free to call or email me.

There is a \$5.00 entry fee. This fee will be waived if you have been a volunteer for RAL in any capacity, for example the May 2011 member show, telephone committee, etc. You may volunteer for the December show and that will count toward the fee waive. Please check with Marian or Liliane if you are unsure of your previous volunteer help. **Member dues (\$35) must be paid to the Membership Chair by November 1, 2012, our November meeting.** If you have not paid your dues and wish to enter the member show the dues will be \$40.00.

The judges' gallery walk through is at our regular meeting, Thursday, December 6, at 7:30 PM. The opening Sunday reception, December 2, 1:30 – 3:30 PM, honors the winners with an award presentation at 2:00 PM with refreshments following. The RAL show agreement will be available for download through our website in November.

The Mansion will not insure any artwork left at the mansion after the last designated pickup time, January 2, 2013. We provide two pick up times, AM and PM, if need be the member can arrange a designee to pick up their artwork or contact Marian for arrangement.

**To print a copy of the show agreement**, go to RAL website, [www.rockvilleartleague.org](http://www.rockvilleartleague.org), click on newsletter, and then click on highlighted yellow link December 2012 Show Agreement.

If you have any questions or concerns, please call at 301-590-9437 or email [mackerer@comcast.net](mailto:mackerer@comcast.net).

Marian MacKerer  
1st VP and Show Coordinator

## Critique by Penny Kritt

If *you* would like a critique, please email a photo to me at [pennykritt@aol.com](mailto:pennykritt@aol.com). Perhaps your work will be chosen for next month! Please submit your work early so I have time to write the column for the next issue.

Sandy Greer has volunteered a painting for this month's critique column. Sandy's work is regularly selected for shows as well as purchase. She dug deep in her oldest files to find a painting in need of a critique. Thank you, Sandy!



*Iris*

Watercolor  
By Sandy Greer

Sandy is off to a great start. Her use of color and shape has created the flow and flutter of petals on an iris. The leaves intertwine and give depth as they swirl in front and behind the flowers. The dark background pushes the plant forward for the viewer's inspection.

### **Suggested Changes:**

Sandy has taken a bold approach to the composition by having the center and right petal of iris run off the page. Let's reshape the petal on the right so it stays within the border and redirects the viewer down instead of out of the painting. Likewise, let's change the center vein on the middle petal so it also keeps the eye moving within the painting.

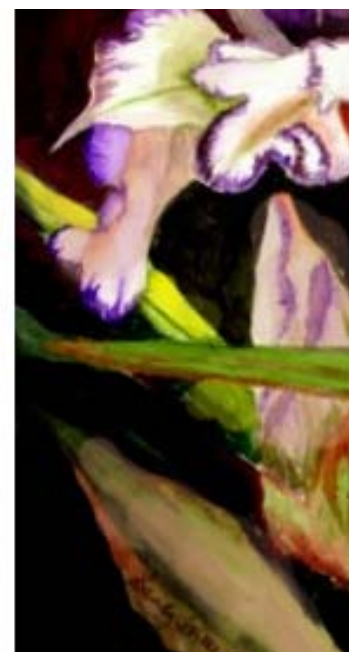


There are many shapes in this composition. Between the petals, leaves and stems, this is a very busy painting. Perhaps it could be even better if we had fewer shapes so the viewer could concentrate on how well each part of the plant was done.

At this point in the composition, it's usually very difficult to edit out shapes. Luckily, Sandy's dark background color gives us the perfect tool to "erase" whatever we want.



Now that there are fewer but stronger shapes, let's use a few dabs of color to make a stronger center of interest.



This time, we'll slightly modify the colors to emphasize some areas and minimize others. Look at the leaf that runs diagonally under the top petal. On the left, it's the same green as most other leaves. On the right, adding some intense yellow gives it a glow of sun light and makes it more prominent. That part of the composition isn't the center of interest, but it could use a little more contrast to make that part of the painting worth a little more time for the viewer.

Avoid using the same color green on all the leaves. To make even more contrast, on the bud and the big leaf on the lower left, adding a wash of orange makes them less noticeable. The wash was made of some burnt orange paint with a fair amount of water. The goal was to tweak the green, not cover it up.

**In and Out:**

As you finalize your painting, prop it up at about six feet away from you. Then go away and come back in a few minutes so you can look at it with fresh eyes. It may well look entirely different at a distance.

Now pay attention to how your eye moves through the painting. Does it just zip through to the center of interest and then stick there? If so, add a little

more contrast elsewhere like we did to bring out the light on the diagonal leaf.

Does your eye wander and not find any place to settle? If so, you haven't defined a center of interest, or at least not well enough. Creating contrast will attract the viewer's eye. Minimizing contrast will make the viewer move more quickly through that part of the painting. Your choices will control how long the viewer stays to enjoy each part of the painting. Each part of the picture space should have something worth spending at least a little time to enjoy.

And finally, be sure that your shapes and lines keep the viewer within the painting. Strong shapes that reach the edge of a composition can grab the viewer and lead him right out of the painting.



If you'd like to join a group that offers weekly critiques, please contact me at the number below. All levels of artists are welcome.

For classes or private lessons, contact Penny at 301/989-Texture 1799.

## **BARTER BIN**

Irene Glaser has 40" and 52" long heavy duty canvas stretcher strips she would like to swap with anyone who has extra 36" long strips. Contact her at: 301-983-1699 or [icglaser@verizon.net](mailto:icglaser@verizon.net).

## **ART CLASSES**

Nadia Azumi, local chapter president of Silk Painters International for MD, VA, and DC, holds meetings, workshops and classes in silk painting at her residence in Rockville. For more information please contact her at: [nadia@nadiasilk.com](mailto:nadia@nadiasilk.com)

## **MEMBER NEWS**

*"Tablescapes"* of **Marian MacKerer** at Glenview Mansion Art Gallery

RAL member, Marian MacKerer, has an exhibit at Glenview Mansion Art Gallery from November 4 - 27, 2012. Her tablescapes still life's will be on view. Meet the artist and opening reception is Sunday, November 4 from 1:30 – 3:30 p.m. Gallery hours are Mon., Wed., Fri., 9 a.m. to 4:30 p.m., and Tues. and Thurs. 9 a.m. to 9 p.m.



**From the *FrederickNewsPost.com*:  
Rockville artist shows series of encaustic  
monotypes at the Arts Barn**

By Lauren LaRocca

Abstract expressionist Jorge L. Bernal has never studied religion or philosophy. His encaustic work based on dreams, spirituality, symbolism and archetypes, fables and mythology come from living.



A piece by Bernal, shown here, is on exhibit at the Arts Barn in Gaithersburg as part of his "Walls and Windows" series.

"I guess the older I get, the more philosophical I get," he said with a laugh by phone earlier in the week.

Some of his recent work is displayed at the Arts Barn Gallery in Gaithersburg through November in the solo show, "Encaustic Monotypes." The show focuses on his "Walls and Windows" series -- physical walls and the ones we "make up," he said. "It's about how we create barriers -- walls to protect or confine or hide."

The windows of his series often pose the question, Are we looking in, or are we looking out?

Grid-like patterns can be seen throughout his

work, a reflection, he said, of his years as an architect.

"I've tried to break away from it many times," he said.

The Rockville-based artist -- born in Havana and raised in Jersey City -- earned an MFA in architecture from Virginia Tech, as well as a BFA from Florida International University in ceramics and art history.

He worked as an architect for several years and when he moved on from that, "I had to channel my creativity somehow," he said. "That led me to work in glass."

He first created glass sculptures and about four years ago began working in encaustic, a medium he's enamored by, he said. Encaustic painters usually use a mixture of hot beeswax and damar resin, an art form that really originated with the Greeks, who would apply the material to their ships to waterproof them, Bernal said. Encaustic allows for layers and transparencies and mixing his own powder pigments, he said.

He usually works in series, first sketching his ideas and then creating the encaustic pieces. A past series, "Las Almas and the Communion of Saints," was about the afterlife, while another explored the idea of the city and how places are defined, both their exterior and through the experiences people associate with them. His "Horizons" series, currently on exhibit in Potomac, is about "how we overcome obstacles and go beyond them," he said.

Arts Barn gallery coordinator Andi Rosati was drawn to the uniqueness of his work and found his use of color "extremely interesting," she said while standing in front of the pieces last week.

Much of his work appears to contain symbols, almost hieroglyphic, as if he's writing with wax in an unknown script.

He said while at openings, "it's more about listening than talking. ... If someone doesn't get it or sees something else, I just keep quiet because that's how the painting speaks to them. "People say there's something spiritual about them. It's just about understanding people and what their needs are. We all go through (crises) -- how do we get through?"

Bernal is also currently showing work at two other galleries: Evolve Arts Project in Washington (through Nov. 2) and Gallery Har Shalom in Potomac (through Oct. 29). For more on the artist, go to: [www.jorgeluisbernal.com](http://www.jorgeluisbernal.com).

Meet Artist Jorge Bernal and learn about encaustic painting:

<http://us2.campaign-archive1.com/?u=902974b391101fa0b35144f31&id=3fc7bd2d01&e=>

**Do you have an upcoming show? Or an event that RAL members might enjoy attending?**

Please send an email to the newsletter editor! [dunnz@erols.com](mailto:dunnz@erols.com).

### *Fine Art Giclée Printing and Photography Services*

*Create Fine Art Prints of your paintings on  
watercolor paper or canvas.*

*.09 cents per sq. inch paper*

*.12 cents per sq. inch canvas*

*\$25 Photography Fee Includes Proofs and  
Color Correction*

*A Work of Art by Debra Halprin*

*For All Your Fine Art Giclée Printing Needs*  
[halprinart@aol.com](mailto:halprinart@aol.com)/301-260-9701

**CHANGE/NEW E-mail ADDRESS or street address? If you have an e-mail address, please inform me,** please send address or e-mail changes to Susan Dunnell at [dunnz@erols.com](mailto:dunnz@erols.com).

**Reminder: Dues are \$40 if received after November 1.** Please make your check payable to "RAL" and mail to Susan Dunnell, 11215 Dewey Road, Kensington, MD 20895.

## **ART OPPORTUNITIES**

### **Amici Miei Restaurant Wall Space**

**Bernie Wilder** has secured ongoing prime wall space at the Amici Mei restaurant in Potomac Woods shopping center on Seven Locks Road near Montrose Avenue. All members can have their work judged for entry and displayed for a two month period throughout the coming year. A commission will be charged, half of which will benefit Montgomery County Child Welfare. There is also a fee involved to help cover the marketing costs (advertising, grand opening). If interested, please contact Bernie directly at: [bswilder@comcast.net](mailto:bswilder@comcast.net).

## **OTHER ART SHOWS IN AREA**

*The Art League of Germantown, Inc. (ALOG)* will hold their Art Show & Sale, "WinterGlow 2012," at the BlackRock Center for the Arts (12901 Town Commons Drive, Germantown, MD) on Friday, Nov. 9 through Sunday, Nov. 11. Artists' wine reception is on Sunday, Nov. 11, from 1—3 PM. [www.alog.org](http://www.alog.org)

*The Olney Art Association's* 2012 Annual Juried Art Show is being held Saturday, Nov. 3, through Sunday, Nov. 11, from noon to 4 pm daily at the Woodlawn Manor Museum, 16501

Norwood Rd., Sandy Spring, MD. Reception is on Sunday, Nov. 4. Juror is David Epstein.

***GLENVIEW MANSION CONFERENCE  
ROOM SHOWS***

You can show your artwork in Glenview Mansion for one month if you have received a 1<sup>st</sup>, 2<sup>nd</sup>, 3<sup>rd</sup> or honorable mention award in an RAL juried show. Starting in 2013, artists may have both rooms to exhibit in if a second artist doesn't sign up for the same month within two months of the show's start date; otherwise they will have one room. The receptions at Glenview mansion are 1:30-3:30 pm, on the Sunday after hanging! Preferred drop-off and pick-up times for Glenview Shows are from 9 am to 12 noon. Note: please contact the mansion management ahead of time if you wish to modify the drop-off or pick-up times. Please note: There is a new show at the Marilyn J. Praisner Library starting February 15; and the Innovation Center is no longer participating in the ongoing shows for RAL.

***GLENVIEW CONFERENCE***

***ROOM SHOW***

Wednesday delivery and hanging: 9AM–12PM  
Sunday Gallery Opening: 1:30—3:30PM  
Wednesday Pickup: 9AM—12PM

**November 2012: Philip Bennett (2)**

Hanging: October 31

Gallery Opening: November 4

Pickup: November 28

**December 2012: RAL Winter Show**

Hanging: November 28

Gallery Opening: December 2

Pickup: January 2, 2013

**January 2013: Jorge Bernal (2)**

**February 2013: Regina Price**

**March 2013: Rockville Student Show**

**April 2013: Susan Moses**

**May 2013: RAL Spring Show**

**June 2013: RAL Board Members' Show**

**July 2013: Diane Jeang (2)**

**August 2013: Joanie Grosfeld (2)**

**September 2013: Open**

**October 2013: Lieta Gerson and Muriel Ebitz**

**November 2013: Pat Kagan (2)**

**December 2013: RAL Winter Show**

**ON-GOING SHOWS**

**PLEASE NOTE:** I will keep updating this list; just email me if you need a current list. The Twinbrook Library now has one month shows; contact Twinbrook to sign up. I have forms for signing up with new establishments. I would need to know the name of the place, contact person, what type of artwork, how many, and any restrictions. Doctors, dentists, law offices and other businesses are good places, as well as restaurants and banks. Bookstores are also excellent. We may be considering some places that would require jurying (but we would continue the tradition of the “open” shows of course).

**Diane Jeang**

**Glenview/Open Show Coordinator** (301) 871-1589 E-mail: [swinedoc@yahoo.com](mailto:swinedoc@yahoo.com)

**RAL ONGOING SHOW LIST**

**Bank of America - 3200 Sandy Spring Road, Olney, Maryland**

10-12 paintings, Contact: (301) 232-1370

<u>Name</u>	<u>From</u>	<u>To</u>
Open	Oct. 15, 2012	Feb. 15, 2013
Vatsala Menon	Feb. 15, 2013	Apr. 15, 2013

**Twinbrook Library - 202 Meadow Hall Drive, Rockville, Maryland**

Shows are now 1 month in length. 5 medium to large paintings, Contact person: Chris Lindy (240)-777-0240, [christinelundy@montgomerycountymd.gov](mailto:christinelundy@montgomerycountymd.gov)

<u>Name</u>	<u>From</u>	<u>To</u>
open	Oct. 15, 2012	Apr. 15, 2013

**Rockville Community Services Office - 30 Courthouse Square Rockville, Maryland**

10-12 medium to large paintings, Contact person: Carlos Aparicio (240) 314-8303

<u>Name</u>	<u>From</u>	<u>To</u>
open	Oct. 15, 2012	Apr. 15, 2013

**Thomas Farm Community Center – 700 Fallsgrove Drive, Rockville, Maryland**

12-16 medium to large paintings, Contact person: Martha Coester (240) 314-8842

<u>Name</u>	<u>From</u>	<u>To</u>
Virginia Montet	Oct. 15, 2012	Dec. 15, 2012
Valthea Fry	Dec. 15, 2012	Feb. 15, 2013
Valthea Fry	Feb. 15, 2013	Apr. 15, 2013

**Marilyn J. Praisner Library – 14910 Old Columbia Road, Burtonsville, Maryland**

10 small to medium or 5-6 large paintings (10 hanging chains), Contact person: Vera Ramaty (240) 773-9455

**Name**

Open

**From**

Oct. 15, 2012

**To**

Apr. 15, 2013

---

**RAL BOARD OF DIRECTORS**

<b><u>Position</u></b>	<b><u>Name</u></b>	<b><u>Phone</u></b>	<b><u>e-mail</u></b>
<b>President:</b>	Liliane Blom	301-518-5312	<a href="mailto:lilianeblom@aol.com">lilianeblom@aol.com</a>
<b>1<sup>st</sup> VP/Show coordinator:</b>	Marian Mackerer	301-590-9437	<a href="mailto:mackerer@comcast.net">mackerer@comcast.net</a>
<b>Treasurer</b>	Patricia Zannie	301-962-8581	<a href="mailto:patriciacollages@yahoo.com">patriciacollages@yahoo.com</a>
<b>Secretary</b>	Fred Ruckdeshel	301-320-3911	<a href="mailto:krisfred1963@yahoo.com">krisfred1963@yahoo.com</a>
<b>Membership</b>	Susan Dunnell	301-949-1514	<a href="mailto:dunnz@erols.com">dunnz@erols.com</a>
<b>Publicity/mkt.</b>	Nadia Azumi	301-538-0062	<a href="mailto:nadia@nadiasilk.com">nadia@nadiasilk.com</a>
<b>Newsletter editor</b>	Susan Dunnell	301-949-1514	<a href="mailto:dunnz@erols.com">dunnz@erols.com</a>
<b>Program coordinator</b>	Jorge Bernal	301-523-4141	<a href="mailto:jorgeluisbernal@gmail.com">jorgeluisbernal@gmail.com</a>
<b>Telephone liaison</b>	Irene Glaser	301-983-1699	<a href="mailto:icglaser@verizon.net">icglaser@verizon.net</a>
<b>Open shows</b>	Diane Jeang	301-871-1589	<a href="mailto:swinedoc@yahoo.com">swinedoc@yahoo.com</a>
<b>Glenview member shows</b>	Diane Jeang	301-871-1589	<a href="mailto:swinedoc@yahoo.com">swinedoc@yahoo.com</a>
<b>Hospitality</b>	Martha Campos	301-266-4670	<a href="mailto:ximenace@verizon.net">ximenace@verizon.net</a>
<b>Historian</b>	Patria Baranski	301-424-6193	
<b>Web master</b>	Noble	301-661-2739	<a href="mailto:noble@artofnoble.com">noble@artofnoble.com</a>
<b>Founder, Hon. lifetime member</b>	Eileen Mader	301-762-6458	

