



RockvilleArtLeague.org Vol. XXII, No. 1 September 2012

**NEXT MEETING - THURSDAY, September 6 at 7:30pm**  
**Presentation & Demonstration by Tinam Valk**

*Susan Dunnell, Editor*

## **MESSAGE FROM THE PRESIDENT** **LILIANE BLOM**

**D**ear fellow artists and art lovers,

I hope you all have been working hard on your art all summer and will have some wonderful



new pieces to share with us this fall. Our new season starts with a talk by Tinam Valk on September 6th. She will discuss her mixed media technique and the ideas behind her work.

The board reviewed the by-laws of RAL over the summer and the new revised ones will be posted to the website, as a PDF file, so all members can review them. A full membership vote on the new by-laws will

be taken at the October meeting so you will have time to read them. Below please find the changes summarized for your convenience by Fred Ruckschel, our wonderful secretary.

I am looking for someone who would be interested in the position of President Elect, which means that you would work closely with me and be a president in training. I hope to hear from lots of you! Call me with your questions at: 301-518-5312.

I had a meeting with the chair of the Montgomery College Rockville Campus, Michael Farrell, who will stop by for a visit at our October meeting. I hope that all our members who have taken classes at MC will attend so they can have a chance to chat with the new chair. I would also like to remind everyone that there are many art events at the campus and three open drawing/painting groups that meet weekly starting in September. These are drop-ins and the fee ranges between \$6-\$9, depending on the number of attendees. You can find more info at: <http://cms.montgomerycollege.edu/artrockville/weekendartgroups/>.

I will have a meeting next week with Alice Nappy of Visarts, as we try to strengthen our

ties and work on some joint workshops that we could offer our members. I am looking for feedback from you as to what subject matter for a workshop you would be interested in attending. Some options that Jorge Bernal, our fabulous program chair, has been working on include:

- Watercolors
- Assemblage and Collage
- Encaustic
- Other? Let us know what rocks your boat!

Hope to see you on September 6th!

Liliane Blom – President, RAL

---

**SEPTEMBER MONTHLY  
MEETING:  
September 6 at 7:30 PM  
TINAM VALK, SPEAKER**

---

## **Recommendations of the RAL Board for Changes in the Bylaws**

The Board has reviewed the League's Bylaws. On the whole, they are well organized and for the most part clearly written. The Board has not attempted to make more readable those few passages that are not easy reading, although understandable.

### **The Board recommends the following five substantive changes to the Bylaws.**

1. The primary recommended change is to provide for the president to have a term of two years in office. The Bylaws currently allow the

president to serve one successive term. Accordingly a president could, *if re-elected*, serve four consecutive years. The Board favors a two-year term in order to allow the president time enough to acclimate to the position's responsibilities and then accomplish the goals that he or she and the Board set forth.

2. The second recommendation is to allow the Board or president flexibility in notifying members or the Board itself of information required to be communicated under the Bylaws. Accordingly, the Bylaws no longer would require notification by U.S. mail. The Board favors and recommends requiring only that the members or Board be “notified” of the information without specifying the manner of notification.

This will conform the Bylaws to RAL's current general practice, allow for various types of electronic communication as they are developed and become widely used (currently, of course, RAL uses email). For those providing the League only a postal address or phone number or both, notification would be by U.S. mail or the telephone.

3. The Board also recommends combining the named offices of the Corresponding Secretary and the Recording Secretary into a single office, that of the Secretary. There does not appear to be a need for both. Thus, two paragraphs describing the duties of the two officers will be modified to eliminate “Corresponding” and “Recording” and be combined under the office title of Secretary.

4. The Board also recommends changing the due date for payment of members' dues from January 1 to September 1. This, of course, conforms with RAL's current practice, which provides for the revenue to coincide with the start of RAL's program year and the program's corresponding expenses.

5. Finally, the Board also recommends providing for the Treasurer to make a report to the membership either at the annual meeting or, now, in the issue of the Newsletter before the annual meeting.

**The Board also decided on the following non-substantive “house-keeping” changes.**

A. The Telephone Committee will now be called the COMMUNICATION COMMITTEE.

B. The membership chairman will provide the Board by December 31, with the names of members during the prior year who did not pay their dues for the current year. Currently, the Bylaws in effect require that report in October.

C. Paragraph 6.6 concerning the removal of a Board member is eliminated. The first sentence duplicates paragraph 5.4 REMOVAL OF A BOARD MEMBER. The Board's power to remove a Board member is properly in ARTICLE 5, because that article defines the powers of the Board.

The second and last sentence of paragraph 6.6 is moved to paragraph 6.1.1 PRESIDENT, which describes the powers of the president, in this instance, the power to remove any officer that the president is charged with appointing.

Respectfully submitted,

Fred Ruckdeschel, Secretary  
August 21, 2012

---

**REMINDER:**

**\$35 MEMBERSHIP DUES**

**FOR September 2012-August 13**

**ARE NOW DUE!**

---

**About Our September Speaker:  
Tinam Valk**



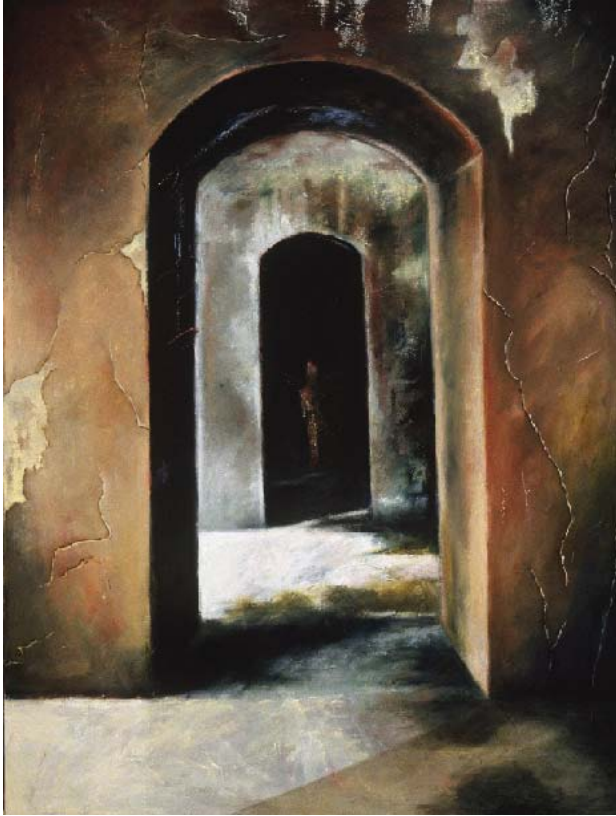
Tinam Valk was born in Berlin, Germany. She spent her childhood and early adulthood in the Netherlands where she received her art education at the Royal Academy of Visual Arts in The Hague.

After coming to the United States in 1976, Tinam earned a post-baccalaureate degree in visual communications at the Maryland College of Art and Design. She worked as a free-lance illustrator and part-time art educator in suburban Washington, D.C. until 1996. Since then she has concentrated exclusively on fine art.

Tinam has traveled extensively, including to such locales as East Africa, South America, Eastern and Western Europe. She retreats annually to Hunting Island, SC, which serves as a constant source of inspiration for her art.



Tinam's work has been exhibited extensively in solo exhibitions, selected group exhibitions and numerous juried shows on the East Coast. Her work is in collections in Europe, the United States and South America. Tinam maintains a studio at her home in Berwyn Heights, Maryland.

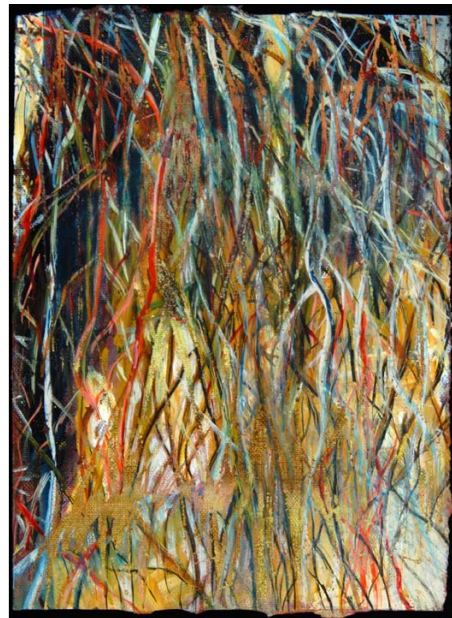


Ambiguity seems to be the main subject in Tinam's art. She captures either ambiguity of shelter (as in her architecture-related paintings) or ambiguity of nature (landscape). She is interested in subjects with layers, either emotionally or actual layers through age or history, as seen in old structures, buildings, statues, and so forth. She conveys this feeling through her application of materials on the canvas, i.e., modeling paste (to create texture), acrylic underpainting, mixed media like oils, charcoal, pencil and pastel, or erasing and building up again. Tinam is not interested in telling the viewer what to see, and prefers they

experience their own emotional response to each image.



Tinam primarily works in her studio after making sketches from life. Sources for these sketches include parks, estate gardens, old cities, or from memory. Significant influences in her art are the artists connected to tonalism or intimism painting: Albert Pinkham Ryder, George Inness, and Caspar David Friedrich.



## RAL ARTIST OF THE MONTH CRAIG WHITT



I am a self taught artist with little training though when I was young, my next door neighbor, who was a sculptress, gave me a few drawing lessons. I also had art classes in high school. Growing up, I had many inspirations to become an artist just by living in the Washington area because I had close access to many fine art galleries. I also had an older brother who painted and let me borrow his paints and brushes.



The one inspiration that set me off was when I was very young and I visited my doctor's office. He had two large paintings (prints, of course): one was the George Bellows' painting of the Firpo and Dempsey fight which was very dramatic for a waiting room!

Equally dramatic and very inspiring to me was Winslow Homer's "Fog Warning," a picture of a Grand Banks fisherman in his small boat in rough seas trying to get back to his mother ship as a fog bank threatened to hide his view and find his way back to the big ship, I looked at that painting every time I went to the doctor's office, wishing I could paint like that. From that time on, Homer was my favorite artist and I tried to imitate his style in my own work.



I was also influenced by other nineteenth century America artists like Sargent, Whisler, Chass, and Hassum as well as the French Impressionists too; especially Monet. I mostly work in oils and occasionally water color. I like to do landscapes but also do wild life, horses, dogs, and cats.

### THE MINI-ARTISTS' WEB PAGES:

The new RAL web pages are offered as an extension to the current "[member directory](#)" section on our site for those members who may not yet have a web presence, or want to expand their presence as members of our league.

For a nominal fee (outlined below) you can have a page on the site that can hold up to 4 images and whatever descriptive text you provide including links to off site web addresses if you wish.



For those that don't want to pay any additional amounts, the current member directory listings will remain, but those who have an RAL page will have a clickable thumbnail image that will link to their RAL hosted artwork ahead of those free text only listings as the site now provides.

To have an RAL member page requires:

1. You be a current paid up member;
2. You pay \$10 (to RAL, "for RAL user webpage"); and
3. You submit to (by an e-mail attachment) up to 4 images (jpg format, no greater than 800 pixels on the longest side) along with the text (e.g., several paragraphs, artist statement) to go on your page, describing whatever you feel is appropriate for your work including link(s) to external websites (like etsy, e-bay or your own website, etc) to:  
[webmaster@rockvilleartleague.org](mailto:webmaster@rockvilleartleague.org)

### **Change/update fees**

*Updates of any sort* (other than fixing errors due to RAL improperly posting your information) to the page will be \$5 *per update*, so if you want to change text and/or images, it is best to group them together and submit them at the same time to avoid unnecessary fees. It is probably best to think of this benefit as a kind of "brochure page" for you as an RAL member.

Note: the member directory is most viewed page on our site, after the home page. We get about 140 new visitors per month.

Every page will have the same design as the rest of the site as amended from time to time, and the text is followed by images 2 rows of 2 columns. I will be posting a web page example on  
[http://rockvilleartleague.org/member\\_direct](http://rockvilleartleague.org/member_direct)

[ory.htm](#) in the near future.

Regards,  
Noble

## **RAL December 2012 Member Art Show**

The RAL Member Art Show will exhibit from December 2 through December 31, 2012, at the Glenview Mansion Art Gallery, Rockville Civic Center. The delivery of artworks is Wednesday, November 28, from 12 noon to 2:00 PM and 5:00 to 7:00 PM. The judging will start at 9:00 AM on Thursday, November 29. Pick up of unaccepted artworks is Thursday, November 29 from 5:00 to 7:00 PM and Friday, November 30 from 10:00 to 12 noon. The opening reception is Sunday, December 2, from 1:30 – 3:30. The judges' gallery walk through is at our regular meeting, Thursday, December 6 at 7:30 PM. Final pick-up is Wednesday, January 2, 2013, 10 – noon and 5 – 7 PM. The **October newsletter** will have detailed information, dates and times. We need many volunteers to help register, move, hang, type, and release entries. A volunteer sign-up sheet will be passed around at the October meeting. At this time I am procuring a juror. If you have a name of a perspective juror please forward their contact information and I will be happy to talk with them.

If you have any questions or concerns, please call at 301-590-9437 or email me at:  
[mackerer@comcast.net](mailto:mackerer@comcast.net).

Marian MacKerer

### **Barter Bin**

RAL member **Laura Chassy** is a printmaker and has the following items to sell:

- 4 cans black spray paint for acquainting; \$1.25 a can.
- 4 sets of clear plastic frame clips; \$4.50 a set.
- Assorted Black Neison Metal Frames; includes fitted glass: \$30-\$40 each.
- 3 tubes of Charbonnel Etching Inks; 2 oz each;  
Raw Sepia-\$13.10  
Geranium Red-\$15.70  
Cobalt Blue-\$13.10

Contact: Laura Chassy/301-589-8058  
Silver Spring, MD

## Critique by Penny Kritt

### *New format*

Starting this month, the format of the column will be a monthly critique of a member of the League who is brave – or desperate – enough to submit a painting!

Thanks to Marian MacKerer for volunteering to start the year off. If *you* would like a critique, please email a photo to me at [pennykritt@aol.com](mailto:pennykritt@aol.com). Perhaps your work will be chosen for next month! Please, *someone* contact me before the end of August so I can prepare for the next issue of the newsletter.



### *Nemo's Friends*

Oil

By Marian MacKerer

Marian says that she likes this composition but it needs a little more *something*. Let's take a look at what she has to work with because then we can decide what might benefit from a change.

This is a bold composition that uses both numerous shapes (oranges, fishbowl, flower pot and bottle) and patterns (napkin, tablecloth and wallpaper) as well as reflections in both the bottle and the fishbowl. She has used them well to keep the viewer circling around the painting. The plant's leaves guide you to the fishbowl and then the reflections in the bowl lead you down to the pattern on the napkins. Then your eye heads to the left and finds the plate with orange segments, the tea pot and then back to the whole oranges. Then the plant leaves will guide you to the bottle, then to the wallpaper, and its stripes will bring you back to the fishbowl. That's how you *keep* someone standing in front of *your* painting, rather than glancing at it and moving to the next one!

Using so many shapes and patterns would be disjointed in the hands of someone less skilled. Well done, Marian!

But since she says she needs something more, let's find a way to describe what she's got. The best

place to start critiquing a painting is always to look at how you've used values (lights, midtones and darks). Put your lightest lights next to your darkest darks and you get a strong contrast.

In this case, the painting is almost all midtones. That will guarantee that a painting is always peaceful, but sometimes that can also make it boring. There aren't any whites and there aren't any darks, even in the shadows on the bottle or under the leaves on the planter. A few more contrasts on the tea pot give it a little more definition, but even that is minimal.

Let's put a few dark shadows around the leaves and the planter. This gives it a little more definition, especially around the sculptural detail on the pot. Then put some shadows on the tablecloth at the lower right, and that makes the bowl stand out and look more like glass.



Perhaps Marian prefers a calmer composition, so this time, we'll leave the values unchanged and just lessen the intensity of some of the shapes. Many of the shapes use the same paint with more or less white (or water if she was using watercolors) so they have the same intensity. By adding a neutralizing color to some shapes, the other, brighter ones will stand out more by comparison.

The leaves at the left are different values of the same color, so we'll make some leaves a cooler

green by adding more blue so there will be more variety. Then we'll put some orange on the wallpaper to make the stripes less bright, and it will seem to push the fishbowl forward. When most of the orange segments are neutralized, the more intense one creates enough contrast that will cause the viewer to see the details of the segments, rather than just skimming over the plate.

Add a little more blue under the leaves and it will make more contrast the oranges (its color opposite).

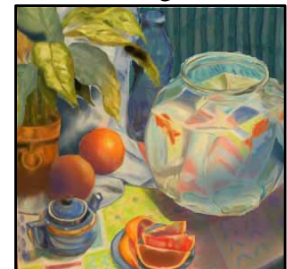


Or maybe we should combine all the changes. That gives the painting an entirely different feel.

(Original)



(with changes)



If you'd like to join a group that offers weekly critiques, please contact me at the number below. All levels of artists are welcome.

For classes or private lessons, contact Penny at  
301/989-1799  
©Penny Krittr 2012



## ART CLASSES



### **FALL 2012 FINE ART CLASSES LIGHT & LANDSCAPE: CAPTURING ATMOSPHERE, WEATHER & MOOD**

(This is a **NEW** class) [(ADS352)  
(CRN#26073)] Instructor **Patricia Zannie**  
Utilizing the elements of design, explore the  
lines, shapes, colors and values found in nature  
to express weather elements such as storms,  
fog, mist, rain, snow and ice, as well as  
different moods such as sunny or gloomy. Use  
collage and mixed media techniques to create  
an original artwork. There is a senior waiver  
for tuition. Seven classes on Thursday  
mornings, 9-12, starting Sept. 6<sup>th</sup> thru Oct. 18<sup>th</sup>.  
RM 209, Cafritz Art Center; TK/SS Campus.  
For more information and registration:  
[www.montgomerycollege.edu/WDCE\\_Fall2012\\_Catalogue](http://www.montgomerycollege.edu/WDCE_Fall2012_Catalogue)

### **ABSTRACTION: FROM NATURE TO TWO- DIMENSIONAL DESIGN PAPER**

[(ADS354) (CRN#26129)] **Patricia Zannie,**  
**instructor.** Learn the abstraction techniques  
developed by modern masters such as Cezanne,  
Gauguin, Matisse, and Picasso, utilizing  
elements of design to simplify the lines, shapes,  
colors and values of a 3-D object and transform

them into a cohesive 2-D composition. Use  
collage and mixed media techniques to create  
an original artwork based on an analysis of the  
3-D object, abstracting its essential meaning  
and components into a 2-D design. Bring  
rubber cement, scissors, and oil pastels to the  
first class. Some art supplies will be provided.  
Tuition waiver applies for seniors. Seven  
classes will be held on Thursday mornings, 9-  
12, starting Oct. 25<sup>th</sup> thru Dec. 13<sup>th</sup>. RM 209,  
Cafritz Art Center; TK/SS Campus. For more  
information and registration:

[www.montgomerycollege.edu/WDCE\\_Fall2012\\_Catalogue](http://www.montgomerycollege.edu/WDCE_Fall2012_Catalogue)

## MEMBER NEWS

**Linda Greigg** will have an exhibit, “Le  
Marche in Miniature,” in Conference Room 6  
at Glenview Mansion from September 9th  
through October 2nd. The opening is from 1:30  
p.m. to 3:30 p.m. on Sunday, September 9th.  
The exhibit consists of small, plein-air  
watercolors which were painted in the region of  
Le Marche on Italy’s Adriatic coast.

**Moira Ratchford** recently sold a painting,  
"Breakfast in Provence II," to a buyer who lives  
in, where else, Provence!



**Irene Glaser** is having a solo show of her  
paintings of flowers at the Guren Art Gallery at

the Cleveland Botanical Garden from August  
31- October 11, 2012.

*Cleveland Botanical Garden*

*presents*

***“DIFFERING PERSPECTIVES”***

a show of art works by

*Irene C. Glaser*

**August 31 - October 11, 2012**

**Opening Reception**

September 9, 2012  
2–4 p.m.

The Guren Art Gallery  
Cleveland Botanical Garden

A portion of proceeds from this show will benefit  
Cleveland Botanical Garden and The Cleveland Clinic



**Jorge Bernal**'s work will be included in the  
following shows this fall:

*Har Shalom Gallery*, Potomac, MD – 8/31 to  
10/29; Opening 9/9: 11 AM to 1 PM

*Evolve Gallery*, DC- Solo Show: 9/16 to 11/1;  
Opening: 9/20, 5:30 to 8:30 PM. For more  
information, please visit:  
[http://evolvedc.com/index.php?option=com\\_content&view=article&id=76&Itemid=65](http://evolvedc.com/index.php?option=com_content&view=article&id=76&Itemid=65)

*Arts Barn*, Gaithersburg, MD: 9/21 to 11/18;  
Opening: 10/2, 7 to 8:30 PM

## Member Services

**Anne Barrington** is an amateur photographer in Rockville, MD, who would like to take photos of artists in their studios. The photos to be taken would not be for publishing purposes, just for my personal portfolio. I would, of course, provide the files to the artists for their use, if requested. If any RAL members are interested, please contact Anne at:  
[barrington.anne@gmail.com](mailto:barrington.anne@gmail.com).

Thank you,  
Anne

## FIGURE PAINTERS & SCULPTURE - LIFE DRAWING/MODELING

Please contact [JackieHoysted@aol.com](mailto:JackieHoysted@aol.com) if you are interested in either or both of the following:

(a) 3hr sessions with a live model on weekdays. Half hour warm up with short poses, followed by a single pose for the remainder of the session.

(b) a week long intensive session of drawing/sculpting from the model in a single pose for the entire week or perhaps a long weekend (Thurs-Sun). Consideration will be given to providing two models depending on signup.

The sessions will be conducted in a large facility that allows for both sculptors and painters and can accommodate large works in progress. The location will be in Dickerson, MD. Currently the facility is without heating/AC but offers terrific space to work large. I am interested in hearing other ideas about open figure drawing sessions.  
[www.jackiehoysted.com](http://www.jackiehoysted.com)

**Do you have an upcoming show? Or an event that RAL members might enjoy attending?**

Please send an email to the newsletter editor!  
[dunnz@erols.com](mailto:dunnz@erols.com).

***CHANGE/NEW E-mail ADDRESS or street address?***

Please send address or e-mail changes to Susan Dunnell at [dunnz@erols.com](mailto:dunnz@erols.com).

**ART OPPORTUNITIES**

**Amici Miei Restaurant Wall Space**

**Bernie Wilder** has secured ongoing prime wall space at the Amici Mei restaurant in Potomac Woods shopping center on Seven Locks Road near Montrose Avenue. RAL members can have their work judged for entry and displayed for a two month period throughout the coming year. A commission and fee will be charged. If interested, please contact Bernie directly at: [bswilder@comcast.net](mailto:bswilder@comcast.net).

***GLENVIEW MANSION CONFERENCE ROOM SHOWS***

RAL members can show their artwork in Glenview Mansion for one month if they have received an award in an RAL juried show.

***ON-GOING SHOWS***

**PLEASE NOTE:** I will keep updating this list; just email me if you need a current list. The Twinbrook Library now has one month shows; contact Twinbrook to sign up. I have forms for signing up with new establishments. I need to know the name of the place, contact person, what type of artwork, how many, and any restrictions. We may consider places that require jurying (but we would continue the tradition of the “open” shows of course).

***Diane Jeang***

***Glenview/Open Show Coordinator*** (301) 871-1589 E-mail: [swinedoc@yahoo.com](mailto:swinedoc@yahoo.com)

Starting in 2013, artists may have both rooms to exhibit in if the other room isn't being used. Note: please contact the mansion management ahead of time if you wish to modify the drop-off or pick-up times.

**GLENVIEW CONFERENCE ROOM SHOW**

Wednesday delivery and hanging: 9AM–12PM  
Sunday Gallery Opening: 1:30—3:30PM  
Wednesday Pickup: 9AM—12PM

**September 2012: Linda Greigg + Floyd Roberts**

Hanging: Sept. 5/Gallery Opening: Sept. 9  
Pickup: October 3

**October 2012: Carol Saussey (2)**

Hanging: October 3/Gallery Opening: Oct. 7  
Pickup: October 31

**November 2012: Philip Bennett (2)**

Hanging: Oct. 31/Gallery Opening: Nov. 4  
Pickup: November 28

**December 2012: RAL Winter Show**

Hanging: Nov. 28/Gallery Opening: Dec. 2  
Pickup: January 2, 2013



***RAL ONGOING SHOW LIST***

**Bank of America - 3200 Sandy Spring Road, Olney, Maryland**

10-12 paintings, Contact: (301) 232-1370

<u>Name</u>	<u>From</u>	<u>To</u>
open	Aug. 15, 2012	Oct. 15, 2012
open	Oct. 15, 2012	Dec. 15, 2012

**Twinbrook Library - 202 Meadow Hall Drive, Rockville, Maryland**

Shows are now 1 month in length. 5 medium to large paintings, Contact person: Chris Lindy (240)-777-0240, [christinelundy@montgomerycountymd.gov](mailto:christinelundy@montgomerycountymd.gov)

<u>Name</u>	<u>From</u>	<u>To</u>
open	Sept. 15, 2012	Oct. 15, 2012
open	Oct. 15, 2012	Nov. 15, 2012
open	Nov. 15, 2012	Dec. 15, 2012

**Rockville Community Services Office - 30 Courthouse Square Rockville, Maryland**

10-12 medium to large paintings, Contact person: Carlos Aparicio (240) 314-8303

<u>Name</u>	<u>From</u>	<u>To</u>
Valthea Fry (301) 926-7084	Aug. 15, 2012	Oct. 15, 2012
open	Oct. 15, 2012	Dec. 15, 2012

**Thomas Farm Community Center – 700 Falls Grove Drive, Rockville, Maryland**

12-16 medium to large paintings, Contact person: Martha Coester (240) 314-8842

<u>Name</u>	<u>From</u>	<u>To</u>
Leita Gerson (240) 654-4736	Aug. 15, 2012	Oct. 15, 2012
Virginia Montet	Oct. 15, 2012	Dec. 15, 2012

**Marilyn J. Praisner Library – 14910 Old Columbia Road, Burtonsville, Maryland**

10 small to medium or 5-6 large paintings (10 hanging chains), Contact person: (240) 773-9455  
Vera Ramaty

<u>Name</u>	<u>From</u>	<u>To</u>
open	Aug. 15, 2012	Oct. 15, 2012
open	Oct. 15, 2012	Dec. 15, 2012

---

## RAL BOARD OF DIRECTORS

<u>Position</u>	<u>Name</u>	<u>Phone</u>	<u>e-mail</u>
<b>President:</b>	Liliane Blom	301-518-5312	<a href="mailto:lilianeblom@aol.com">lilianeblom@aol.com</a>
<b>1<sup>st</sup> VP/Show coordinator:</b>	Marian MacKerer	301-590-9437	<a href="mailto:mackerer@comcast.net">mackerer@comcast.net</a>
<b>Treasurer</b>	Patricia Zannie	301-962-8581	<a href="mailto:patriciacollages@yahoo.com">patriciacollages@yahoo.com</a>
<b>Secretary</b>	Fred Ruckdeshel	301-320-3911	<a href="mailto:krisfred1963@yahoo.com">krisfred1963@yahoo.com</a>
<b>Membership</b>	Susan Dunnell	301-949-1514	<a href="mailto:dunnz@erols.com">dunnz@erols.com</a>
<b>Publicity/mkt.</b>	Nadia Azumi	301-538-0062	<a href="mailto:nadia@nadiasilk.com">nadia@nadiasilk.com</a>
<b>Newsletter editor</b>	Susan Dunnell	301-949-1514	<a href="mailto:dunnz@erols.com">dunnz@erols.com</a>
<b>Program coordinator</b>	Jorge Bernal	301-523-4141	<a href="mailto:jorgeluisbernal@gmail.com">jorgeluisbernal@gmail.com</a>
<b>Telephone liaison</b>	Irene Glaser	301-983-1699	<a href="mailto:icglaser@verizon.net">icglaser@verizon.net</a>
<b>Open shows</b>	Diane Jeang	301-871-1589	<a href="mailto:swinedoc@yahoo.com">swinedoc@yahoo.com</a>
<b>Glenview member shows</b>	Diane Jeang	301-871-1589	<a href="mailto:swinedoc@yahoo.com">swinedoc@yahoo.com</a>
<b>Hospitality</b>	Martha Campos	301-266-4670	<a href="mailto:ximenace@verizon.net">ximenace@verizon.net</a>
<b>Historian</b>	Patria Baranski	301-424-6193	
<b>Web master</b>	Noble	301-661-2739	<a href="mailto:noble@artofnoble.com">noble@artofnoble.com</a>
<b>Founder, Hon. lifetime member</b>	Eileen Mader	301-762-6458	

