



RockvilleArtLeague.org Vol. XXI No. 5 January 2012

NEXT MEETING - THURSDAY, **February 2<sup>nd</sup> at 7:30pm**  
*Featured Artist Speaker: Anthony Miserendino*

## MESSAGE FROM THE PRESIDENT LILIANE BLOM

Dear fellow artists and art lovers,



First a reminder there will be no meeting on January 5<sup>th</sup>, our next meeting is scheduled for February 2<sup>nd</sup> 2012. We are starting the New Year with Jorge Bernal as our program coordinator, so if you have any ideas or wishes for program-

ming in the next year, feel free to shoot him an e-mail at: [jorgeluisbernal@gmail.com](mailto:jorgeluisbernal@gmail.com).

Our December show looks wonderful and the virtual tour is there for you to share with your friends, families and patrons. You can easily send it to anyone you think might be interested by e-mailing the following link:

<http://rockvilleartleague.org/> and click on the Virtual Gallery and while you are there

compare and contrast it with our spring show! Let us know what you think. For those who would still like their images and links put up: please forward them to:  
[Daria@panoramastreet.com](mailto:Daria@panoramastreet.com).

For our members, 62 years of age and over, who are looking for the information on the "Saving the Legacy" program that Patricia Dubroof mentioned at the walk through, it's included in the newsletter. And to apply to the residency program at Iona contact:  
[pdubroof@iona.org](mailto:pdubroof@iona.org)  
(202) 895-9407.

We all had a great time listening to Professor Chawky Frenn at the walk through. For those of you who did not come to the walkthrough, I would urge you to attend the next one, they are usually very interesting. I have posted his comments on my work, which I recorded with my cell phone on RAL's Facebook page. Take a look.

To everyone, I wish a very merry New Year...here's to much creativity and a wonderful 2012.

**LILIANE BLOM – PRESIDENT, RAL**

## **JANUARY 2012 -- NO MONTHLY RAL MEETING**

There is no monthly meeting in January. Our next scheduled meeting is for Thursday, February 2, at 7:30 PM.

## **FEBRUARY 2 MONTHLY MEETING**

### **Anthony Miserendino, Speaker**



**02 Chivalry by Anthony Miserendino**

Art is a moral and political force which greatly influences my work. Objects that are made to communicate authority and power intrigue me. I have focused recently on highly decorated armaments and religious vestments from the European tradition. I am drawn to the use of design and craftsmanship as tools to influence supporters, intimidate rivals, and signify authority in both moral and political realms. As I study these objects, I posit the question: Is their art only a façade, or an honest representation of ideals, devotion, and dominance?

In my sculpture, I use long-established, classical materials like wood, bronze, and steel because they provide a direct discourse with the devotional objects of Western Art History that are formed in these media. These materials also assert great value, and are therefore

necessary to represent objects intended to be so influential and important. In addition, my drawings are sculptural, with dimension and weight, to represent and emphasize the object, and not to interfere with its intended power.

I will give a slideshow presentation of my work at the meeting, and also a technical presentation on marquetry/wood veneer techniques (as seen in the image titled “02 Chivalry.”)

For more information about Anthony’s art, please visit: [www.anthonymiserendino.com](http://www.anthonymiserendino.com)

## **RAL FEATURED ARTIST OF THE MONTH – DIANE JEANG**

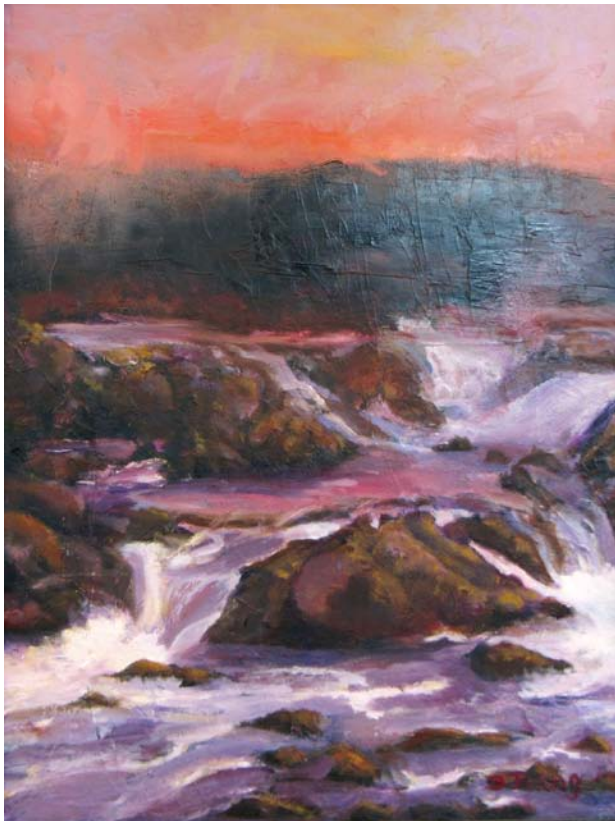
I was born in Cedar Rapids, Iowa, and moved to the Washington, D.C. area in 1986. Growing up on a farm in Iowa, I began drawing animals at an early age, especially horses.



After a long hiatus from art, I returned to drawing and painting in 2003.

I’ve studied with several local artists, including several current and former members of RAL: drawing with Heidi Nam, watercolor with Firouzeh Sadeghi, and oil painting with Rulei Bu.

I work in several different media, including watercolor and oil. Lately I have been creating a series of pastels depicting horses, which made up my February 2011 show at the Ratner Museum. I am currently taking commissions of animals and other subjects. I am the open or ongoing shows chair and am always hoping to add new venues to this list.



## BARTER BIN

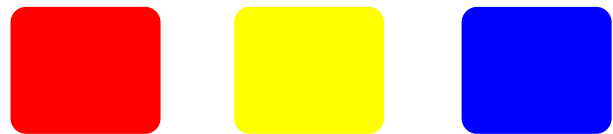
Just a reminder that we now have the “Barter Bin,” a way for members to trade or sell books, magazines, supplies they have and would like to get rid of – please submit your list of items, with either a note about what you would like to trade for, what you would like to sell the items for – or if they are for giving away. Please also include your contact information. You may also bring your items to our meetings to give away or to show off to potential buyers. Also, you might want to trade for artwork.

## PAINTING TIPS WITH PENNY KRITT

### Color temperatures: How to choose colors in a composition

Last month we talked about how to create the perfect colors for your paintings. There are several methods to explain how to create a specific color. We’ll use the one that says there are three primary colors, red, yellow and blue. Black is the combination of all three and white is the absence of any color.

The real trick is to choose primary colors that are neutral. That means that the “pure” red leans neither warm (toward yellow or orange) nor cool (toward blue, green or purple) elements. The yellow won’t have any orange/red or blue/green. And the blue won’t have any red or yellow. The samples below are about as close as you can come to neutral colors. Hopefully, your monitor is calibrated so you see these colors accurately.



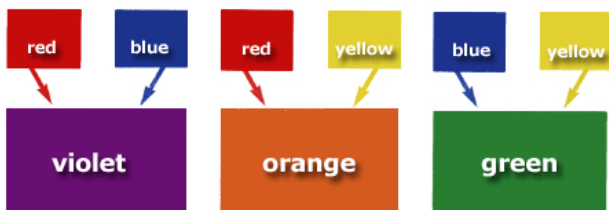
The challenge is finding true neutral primaries. Some manufacturers have their own unique names that sound like the color might be neutral, but it’s not a guarantee. And even though many manufacturers make colors with the same name, you might find that common colors like “alazarin crimson” or “sap green” vary widely from one company to the next.

The good news is that there’s an easy way to check a paint’s “temperature” and it also works with your existing paints.

If you add a primary red to a primary yellow, you’ll get an intense (bright) secondary orange. But if there’s some blue in either the red or the yellow, the orange will be a duller, tertiary color because the third primary somehow crept in! Likewise with using red and blue to build purple, as long as there isn’t any yellow in either one, you’ll get an intense purple. But if your red is really coral, or your blue

is aqua or cerulean, they are made with yellow, and the purple look like it's got gray or brown in it. If you need a true green, using a golden yellow or an ultramarine blue will get you a tertiary (dull - all three primaries) green because red was already in there!

**Secondary Colors** - This is the term used to describe colors that are created by mixing two primary colors. There are three secondary colors: green (made up of blue + yellow); Violet (made up of red + blue); and orange (made up of blue + yellow).



**Tertiary Colors** - Create these colors by mixing one primary and one secondary color. There are six of these: red-orange, yellow-green, blue-violet, red-violet, yellow-orange, and blue-green. Three examples follow.



But, as I mentioned in last month's column, at least 85% of your painting's colors should usually be tertiary, so now you know how to mix an almost unlimited number of colors! Are your landscapes and florals boring because you always use sap green for foliage? If so, use it (or any green you mix) and then add a little of any color on your palette that has red in it. So if you have purple, gold, an orange or rose already mixed, just add some to your greens to warm them up. Now you can mix darks that are *really* dark and still green, instead of building shadows out of gray or black. You can mix colors on your palette or just add a wash (a mixture of some paint and a lot of water or medium) over any color already on your composition.

Do you always rely on a standard brown color? Brown is a tertiary, so you can add anything to it to make a different brown! Add some gold and get a warm khaki color. Add more blue and get a cooler dark chocolate. Or add red and get a warm, rich mahogany.



What if the colors you thought were primaries were really secondaries? You can still build other intense secondaries. For example, alizarin crimson is a red with blue in it. To create an intense purple, just add ultramarine blue because it's also a combination of blue and red. Neither color has any yellow, so your purple will always be an intense secondary. If you want a dull, tertiary purple, you can just add anything that's got some yellow in it, maybe an orange or a green.

You can also tweak a color by changing how much of the third primary you add. In the example below, I took a pure red and added a wash of green to create the square No. 1. I added another wash of green to create square No. 2, and a third wash of green to create square 3. This is the kind of change you might use if you're painting a large red rose. While you know that every petal is the same red and every leaf is the same green, you need a variety of reds and greens to create an interesting painting.



Now let's look at some different greens to do the leaves on that rose. You can see what has been added to each swatch. The combinations are endless.

Below are some four swatches of green. The top row shows what has been added to create a new green. The next set shows other combinations. Use more paint and get a darker color or add more water and get a lighter version. No more boring landscapes for you where all the greens are too bright!



For classes or private lessons, contact Penny at 301/989-1799.



## OPPORTUNITY FOR RAL MEMBERS TO SHOW WORK

Bernie Wilder, a new RAL member interested in marketing RAL members' works, has secured 35 feet of prime wall space at the Amici Mie restaurant in Potomac Woods shopping center on Seven Locks Road near Montrose Avenue.

[www.amicimieiristorante.com](http://www.amicimieiristorante.com)

All members can have their work judged for entry and displayed for a two month period throughout the coming year. Artists living in Montgomery County or close by do not need to bring their paintings to the restaurant. Bernie will come to view them at their home or studio. A 20% commission will be charged, half of which will benefit Montgomery County Child Welfare. In the past their employees have been supportive of restaurants who host and or advertise certain types of events. There will also be a \$35 fee to help cover the marketing costs (advertising, grand opening).

Each chosen artist will be able to hang approximately 4-6 paintings based on space availability. It MAY be necessary to assess an additional 5-10% commission on larger paintings (generally 48"+ on any side). The requirements will be the same as those used for the RAL December exhibit except that

UNframed paintings are allowable so long as they are painted along 3 sides, excluding the top side.

Those artists wishing to display their work should contact Bernie as soon as possible so that I may have time to view their work and prepare for the first exhibit. Artists not chosen for the first exhibit can still secure a space for future exhibits.

This is a great opportunity for artists sell their art and receive wider community recognition. Please get back to Bernie as he is shooting for a late January or February 2012 start date. Please contact Bernie directly: [bswilder@comcast.net](mailto:bswilder@comcast.net).

## CALLING PROFESSIONAL ARTISTS AGE 62+

**Art Cart: Saving the Legacy** is an inter-generational arts legacy project currently seeking artists. Beginning in Washington, D.C. in fall 2012, Art Cart will connect aging professional artists with teams of student fellows to undertake the preparation and documentation of their creative work, offering both groups an educational experience that will help shape the future of our cultural legacy. The pilot program successfully launched last year at Columbia University. They are seeking visual artists, age 62+, to participate in the program. For more information visit: [www.creativeaging.org/artcart](http://www.creativeaging.org/artcart). Artists receive honoraria for public forums. To receive more information please send your contact information to [rcac@creativeaging.org](mailto:rcac@creativeaging.org) or leave a message at 202-895-9489. Information materials will be sent in January for a February deadline.

If interested, please join us for an **Informational Meeting** for Art Cart: Saving

the Legacy at the Iona Senior Services, located at 4125 Albemarle Street NW, Washington, D.C. 20016 on Friday, February 10, 2012, from 3:30pm–4:30PM.

The meeting will be followed by a “Meet the Artist” Reception for Iona’s Artist in Residence from 5-8PM.

## MEMBER NEWS

### *NEW MEMBERS*

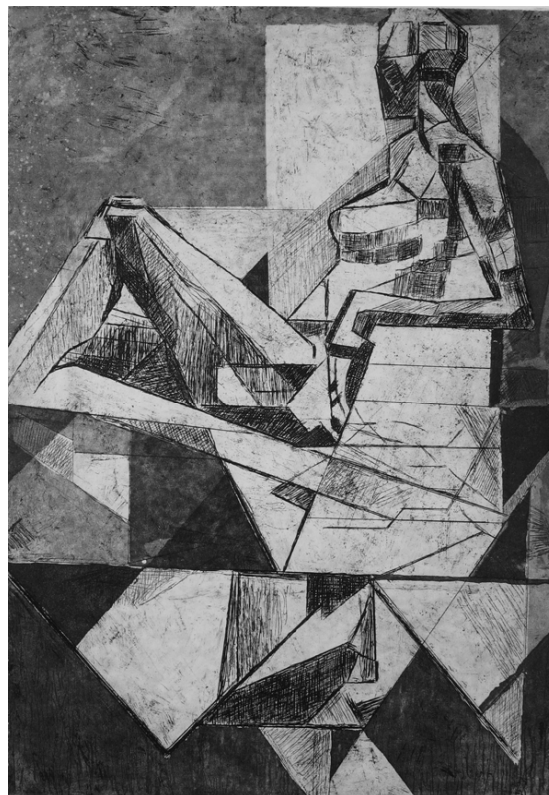
**Marty Scheinberg:** I am a 71 year old sculptor. I've taken sculpting classes over the last 18 yrs at Glen Echo, The Art League in Alexandria, Eye Street Studio, and the last 2 1/2 yrs at Montgomery College with Orest Poliszczuk. I work in stone, clay & plaster and enjoy it tremendously.

### *CHANGE/NEW E-MAIL ADDRESS OR STREET ADDRESS?*

Please send address or e-mail changes to Susan Dunnell at [dunnz@erols.com](mailto:dunnz@erols.com).

### *HAPPENINGS*

**Judith D. Prevo** will exhibit at the Kentlands Mansion in Gaithersburg, MD from January 20--March 18, 2012. Judy will exhibit her watercolor and acrylic paintings. There will also be two other artists in this show. To make an appointment to see the exhibit, please call (301) 258-6425. The Mansion is located at 320 Kent Square Road, Gaithersburg, Maryland. All are invited to our reception at the Mansion on Tuesday, January 24, 2012, from 7:00--8:30 PM.



**Maurice Margulies** is exhibiting his work at Kentlands Mansion from December 9 through January 16, 2012.

**Marty Slater** was awarded “honorable mention” in the Annual Open Juried Art Exhibition at the Montpelier Arts Center from December 4-28. [9652 Muirkirk Rd. Laurel MD 20708/ 301-377-7800 or 410-792-0664] Marty will also have a drawing in the 15th Annual National Juried Show at Gallery West which will be open Feb 8-March 4. [1213 King Street, Alexandria VA 22314(703-549-6006 [www.gallery-west.com](http://www.gallery-west.com))

**Do you have an upcoming show? Or an event that RAL members might enjoy attending?** Please send an email to the newsletter editor! [dunnz@erols.com](mailto:dunnz@erols.com).

**Newsletter Submission Deadline: January 15th for the February newsletter.**

## OPPORTUNITIES

### ***THE GALLERY AT IONA SENIOR SERVICES - Artist in Residence Program***

The Gallery at Iona seeks 2 and 3 dimensional artworks created by artists 60+ years young. The mission of the Gallery at Iona is to create a welcoming and engaging exhibition space for visitors to enjoy at Iona Senior Services. Visitors who spend time looking at the artwork, taking a tour or a workshop, will improve their mental and physical well being.

Iona Senior Services provides social services, information and referral, a variety of classes and clubs, an art gallery and an adult day wellness & arts center located in NW DC. Promoting wellness through creativity plays a very strong part in our mission of enabling people to live with dignity and independence.

If interested, please contact: Patricia Dubroof, Gallery Director, for more information at: [pdubroof@iona.org](mailto:pdubroof@iona.org), or (202) 895-9407, Iona Senior Services, 1145 Albemarle St., NW, Washington, DC, or visit [www.iona.org](http://www.iona.org).

### ***GLENVIEW MANSION CONFERENCE ROOM SHOWS***

The receptions at Glenview mansion are 1:30-3:30 pm, on the Sunday after hanging! Preferred drop-off and pick-up times for Glenview Shows are from 9 am to 12 noon. Note: please contact the mansion management ahead of time if you wish to modify the drop-off or pick-up times.

**RAL 30-day Glenview Mansion Member Shows in Conference Rooms 5 & 6** (Rm 6 has the fireplace) are open to members who have received awards in previous juried member-only shows. Please contact: **Diane Jeang** at 301-871-1589 or [swinedoc@yahoo.com](mailto:swinedoc@yahoo.com)

**CONFERENCE ROOM SHOW TABLE**

2012	Member(s)	Wednesday Deliver and hang 9 am – 12 pm	Sunday Gallery Opening 1:30-3:30 pm	Wednesday Pick Up 9 am – 12 pm
JAN	Jorge Bernal (2)			
FEB	Natalya Parris (2)			
MAR	Rockville Student Show			
APR	Chris Luckman (2)			
MAY	RAL Spring Show			
JUN	Board Member's Show			
JUL	Diane Jeang (2)			
AUG				
SEP	Patricia Zannie (2)			
OCT	Carol Saussey (2)			
NOV	Philip Bennett (2)			
DEC	RAL Winter Show			
JAN				
FEB				
MAR	Rockville Student Show			

**ON-GOING SHOWS**

**PLEASE NOTE:** I will keep updating this list; just email me if you need a current list. Twinbrook Library now has 1 month shows and please contact Twinbrook to sign up; they have a lot of openings.

I am continuing with the On-Going shows for next year, but I'm looking for new venues for the shows. There has been interest lately in getting some more shows, so if you know of a place interested in hanging artwork on a rotating basis, please let me know. I have forms for signing up new establishments. I would need to know the name of the place, contact person, what type of artwork, how many, and any restrictions. Doctors, dentists, law offices and other businesses are good places, as well as restaurants and banks. Bookstores are also excellent. We may be considering some places that would require jurying (but we would continue the tradition of the "open" shows of course).

Thank you,  
**Diane Jeang**  
**Glenview/Open Show Coordinator**  
 (301) 871-1589 E-mail: [swinedoc@yahoo.com](mailto:swinedoc@yahoo.com)

**RAL ONGOING SHOW LIST**

**January 2012**

**Bank of America - 3200 Sandy Spring Road, Olney, Maryland**



10-12 paintings, Contact: (301) 232-1370

<u>Name</u>	<u>From</u>	<u>To</u>
Open	Dec. 15, 2011	Feb. 15, 2012

**Twinbrook Library - 202 Meadow Hall Drive, Rockville, Maryland**

Shows are now 1 month in length. 5 medium to large paintings, Contact person:  
Chris Lindy (240)-777-0240, [christinelundy@montgomerycountymd.gov](mailto:christinelundy@montgomerycountymd.gov)

<u>Name</u>	<u>From</u>	<u>To</u>
Open	Dec. 15, 2011	Jan. 15, 2012
Open	Jan. 15, 2012	Feb. 15, 2012

**Rockville Community Services Office - 30 Courthouse Square Rockville, Maryland**

10-12 medium to large paintings, Contact person: Carlos Aparicio (240) 314-8303

<u>Name</u>	<u>From</u>	<u>To</u>
Open	Dec. 15, 2011	Feb. 15, 2012

**Thomas Farm Community Center – 700 Fallsgrove Drive, Rockville, Maryland**

12-16 medium to large paintings, Contact person: Martha Coester (240) 314-8842

<u>Name</u>	<u>From</u>	<u>To</u>
Open	Dec. 15, 2011	Feb. 15, 2012

**The Rockville Innovation Center, Floors 4 and 5 of 155 Gibbs Street, Rockville MD 20850, directly above VisArts**

**Fourth Floor:** 25 medium to large painting space available, some hooks already in wall / Contact Person: Nancy Finkle at 301-279-2222; FAX: 301-279-2112

There is space for over 25 large to medium paintings, and there are many empty hooks for hanging. Hooks and hanging devices can be moved, and you can bring more in hooks. Several artists can show together.

<u>Name</u>	<u>From</u>	<u>To</u>
Open	Dec. 15, 2011	Feb. 15, 2012

**Fifth Floor:** 20 medium to large painting space available but must provide hanging devices for initial exhibit / Contact Person: Nancy Finkle at 301-279-2222; FAX: 301-279-2112. Same dates are available for the fifth floor.

---

## RAL BOARD OF DIRECTORS

<u>Position</u>	<u>Name</u>	<u>Phone</u>	<u>e-mail</u>
<b>President:</b>	Liliane Blom	301-518-5312	<a href="mailto:lilianeblom@aol.com">lilianeblom@aol.com</a>
<b>1<sup>st</sup> VP and Show coordinator:</b>	Marian Mackerer	301-590-9437	<a href="mailto:mackerer@comcast.net">mackerer@comcast.net</a>
<b>2<sup>nd</sup> VP</b>	Sandra Levine	301-424-8347	<a href="mailto:azaleasbloom@hotmail.com">azaleasbloom@hotmail.com</a>
<b>Treasurer</b>	Patricia Zannie	301-962-8581	<a href="mailto:patriciacollages@yahoo.com">patriciacollages@yahoo.com</a>
<b>Secretary</b>	Fred Ruckdeshel	301-320-3911	<a href="mailto:krisfred1963@yahoo.com">krisfred1963@yahoo.com</a>
<b>Membership</b>	Susan Dunnell	301-949-1514	<a href="mailto:dunnz@erols.com">dunnz@erols.com</a>
<b>Publicity/mkt.</b>	Nadia Azumi	301-538-0062	<a href="mailto:nadia@nadiasilk.com">nadia@nadiasilk.com</a>
<b>Newsletter editor</b>	Susan Dunnell	301-949-1514	<a href="mailto:dunnz@erols.com">dunnz@erols.com</a>
<b>Program coordinator</b>	Jorge Bernal	301-523-4141	<a href="mailto:jorgeluisbernal@gmail.com">jorgeluisbernal@gmail.com</a>
<b>Telephone liaison</b>	Irene Glaser	301-983-1699	<a href="mailto:icglaser@verizon.net">icglaser@verizon.net</a>
<b>Open shows</b>	Diane Jeang	301-871-1589	<a href="mailto:swinedoc@yahoo.com">swinedoc@yahoo.com</a>
<b>Glenview member shows</b>	Diane Jeang	301-871-1589	<a href="mailto:swinedoc@yahoo.com">swinedoc@yahoo.com</a>
<b>Hospitality</b>	Martha Campos	301-266-4670	<a href="mailto:ximenace@verizon.net">ximenace@verizon.net</a>
<b>Historian</b>	Patria Baranski	301-424-6193	
<b>Web master</b>	Noble	301-661-2739	<a href="mailto:noble@artofnoble.com">noble@artofnoble.com</a>
<b>Founder, Hon. lifetime member</b>	Eileen Mader	301-762-6458	



---

**Newsletter Deadline: 15th of each month, August through May.**