



RockvilleArtLeague.org Vol. XXXIII No. 6 February 2024

**Next Meeting: Thursday, February 1, 7:00 PM
An Evening with Palden Hamilton**

Message from the President, Patrick Sieg

Dear Rockville Art League Artists,
2024 has started with a “bang” ...intense cold weather, beautiful art exhibitions (one going up and another coming down) and some curveballs regarding messages from the Rockville Art League and beautiful snow and snow and more snow.

Starting with the curveballs:

We have a process for members to collect their work from the shows coming down and delivering their work for the new shows going up. These steps are usually on the same day and the process works very well...when it isn't snowing.

And when the weather creates some challenges then it is vital that we can communicate effectively and on a timely basis.

We have a reliable tool in MailChimp to facilitate getting the word out to our email list...but, suddenly and for the first time, our communications landed in junk/spam email folders.

Well, we diagnosed the issues, have some fixes in place and we got through the art exchange on Wednesday in really good shape. Plus, we enjoyed seeing sledders having fun on the hill behind the Mansion.

The *Portraits: Creatures Great or Small* exhibit is beautiful and impressive.

Our “Meet the Artists” event was a success with about 130 attendees.

Judge Maud Taber-Thomas attended and shared her thoughts about the show and some of the award-winning art and stayed long enough to chat with members and guests one on one.

Special thanks to Stacy Yochum, David Allen, Jennifer Lubell, Cathy McDermott, Susan Dunnell, Rob Gale, Helen Wood and Michael Auger for their help on the show and with communications issues.

And thank you, members, for reading our many messages regarding snow closures and picking up, delivering artwork...well done.

It takes a league.

We cannot thank our Juried Show Lead Lisa Sieg for her effort, focus and artistic vision in staging these shows (on the walls, all the logistics, communications, etc.) and for being there for our artists. Finally, please see the show, and Judge Maud Taber-Thomas's award selections, in person in the warmth of the Glenview Mansion's Art Gallery. You will be glad you did.

Our Juried Members' Winter Art Show is still available virtually. See information later in this newsletter for information on how to access past virtual shows.

Judge Palden Hamilton did a fantastic job selecting the work and picking the award winners.

We had such an enthusiastic response from members that we have invited Palden to present to RAL on Thursday, February 1st (via Zoom). He will show us what he is working on and provide some helpful painting techniques and hints.

Note that the Zoom invitation will be posted on the RAL website (and will also be sent out and please check your spam/junk folders...just in case).

I recently read comments from California based artist Marla Baggetta on keeping your art practice on track while navigating life's inevitable "Curveballs."

She writes...

- **Art is your gift to others.** When you're happy and at peace, those around you are profoundly affected. Art has a far-reaching impact even if you're not a professional. The energy of art pours out to everyone in your sphere. Making art isn't selfish.
- **Be prepared for what's coming.** Life's curveballs are rarely pretty, and we can prepare and try to be graceful about it. That means being prepared to paint right through the distractions and the tragedies. Art heals us.
- **Give yourself permission.** We all only get one turn on this earth, so give yourself permission to leave it all on the easel (or whatever your medium may be).
- **Make it a practice.** Like everything in life worth doing, art takes work, and inspiration comes from the work. If we only painted when conditions were perfect, then we wouldn't be painters. Set aside time every day to spend as an artist, make it a discipline—just like brushing your teeth.
- **Set boundaries.** If you're a parent, a caregiver, or a friend, set clear boundaries regarding what you can and cannot do. Let people know how important your art is and when you share that, they'll respect how much art and creativity means to you.
- **Take care of yourself.** It's just like flight attendants tell us: In case of emergency, take care of your oxygen mask first, and then tend to those around you. For artists, this means not neglecting our creative impulses. And every now and then feel free to treat yourself to a painting vacation with artist friends or an art workshop to cultivate your creative energies. Or get some friends together to enjoy an art exhibition like *Portraits: Creatures Great or Small* at Glenview Mansion. (Marla didn't say that last part but she would have if she knew about our show.)

2024 is going to be an excellent year for the Rockville Art League and for each of us.

We have artistry and creativity on our side.

And knowing that life's "curveballs" including snow and junk mail folders, will be overcome and make for great stories down the road.

“The New Year is painting not yet painted: a path not yet stepped on; a wing not yet taken off!”
Mehmet Murat Ildan

Thank you for supporting our league.

Patrick Sieg
President
The Rockville Art League.

Rockville Art League Speaker Series

Mark your calendars for our winter/spring 2024 meetings. These programs will be on Zoom. Zoom invitations are sent out to members a few days prior to the presentations and we plan to record them. The zoom link to join in *will also be posted* on the RAL website the day of the presentation.



Thursday, Feb. 1, 7:00pm Palden Hamilton on “Understanding Form and Light, Through Painting Simple, Planar Objects”

“There’s a vein that runs through the history of representational drawing and painting in which objects are conceptualized as simplified, sculptural forms.” ~Palden Hamilton. Join us for an evening with Palden Hamilton, who many of you met when he presented awards on Dec. 3, and juried an amazing *RAL Juried Members’ Winter Show* for us. On Feb. 1 he will present an overview of his work

and offer a painting demonstration discussing challenges in understanding light, form and color. There will be time for Q&A. Mark your calendars. You don't want to miss this!

Palden Hamilton is an artist and art educator working in Maryland. Encouraged from an early age to pursue art by his parents and his great aunt, the abstract expressionist Elaine Hamilton O'Neal (1920-2010), he attended the Gilman School, where he studied under Betsey Heuisler. He received his BFA from The School of the Art Institute of Chicago in 2002 and continued his education at the Art Students League of New York, and studied under Ron Sherr, Harvey Dinnerstein, and Mary Beth McKenzie. There he was awarded a *Merit Award in Realism* and the Phylis T. Mason Grant. Hamilton has done a range of commissioned portrait work since returning to his hometown of Baltimore. In 2008, 2017, and 2018, he was awarded *Certificates of Excellence* from the Portrait Society of America for placing in the top 30 entries in their international portrait competition. Hamilton has painted landscape extensively on location in his native Maryland, and on travels to his mother's homeland, the Himalayan kingdom of Sikkim. As a landscape artist, he has participated in and received honors from Plein Air Easton, Olmsted Plein Air Invitational, Wayne Plein Air, Solomons Plein Air, and Cape Ann Plein Air. His work was most recently featured in "The Oil Painter's Color Handbook" (Monacelli Press, 2022), Fine Art Connoisseur Magazine's "Five to Watch" in 2020, and Plein Air Magazine's "11 Rising Stars to Add to Your Collection" in 2019. Hamilton has been an art instructor for over ten years, teaching at the Maryland Institute College of Art (MICA), the Zoll Studio School of Fine Art, Chesapeake Fine Art Studio, and others. For more information, visit: <http://www.paldenhamilton.com>

Thursday, March 7, 7:00pm: Florida artist **Elli Milan** on "Finding Your Own Voice."

Thursday, April 4, 7:00pm: a presentation is in the works!

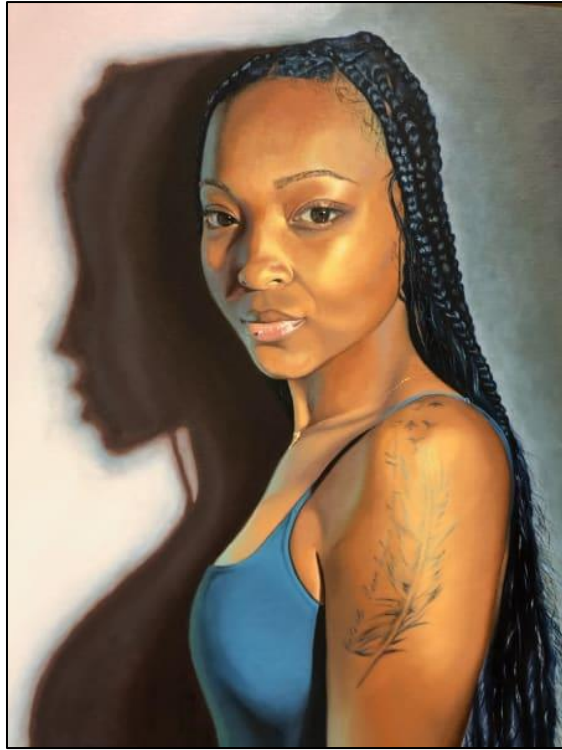
Did you know you can access past RAL presentations on RAL's YouTube?

If you have missed any of the recorded zooms they can easily be found by clicking on the YouTube icon at the bottom of the Rockville Art League website or by visiting <https://www.youtube.com/user/rockvilleartleague/featured>. Helen Wood has done a wonderful job posting these for RAL and we thank her for all her work on this.

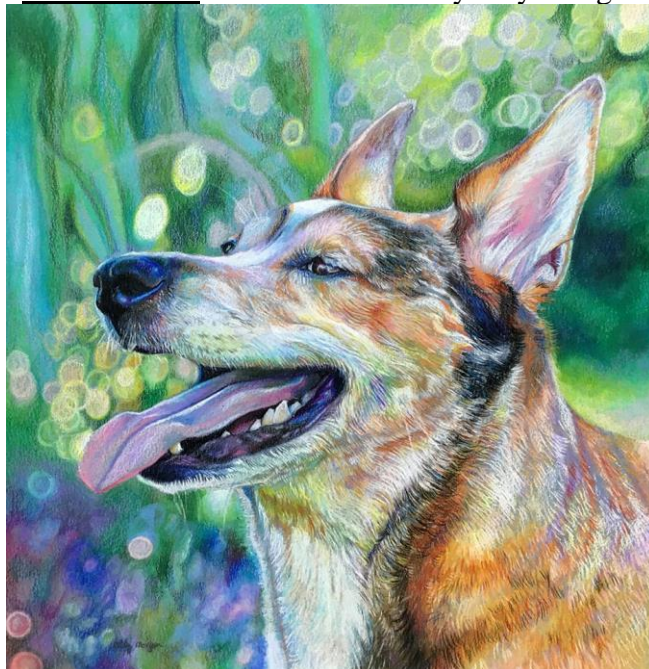
Rockville Art League *Portraits Great or Small* Show

Awards presented by Maud Taber-Thomas

First Prize: *Take These Broken Wings* by Isabella Martire



Second Prize: *Zelda in Nature* by Ally Morgan



Third Prize: *Plantain Queen II* by Jordan Henson



Honorable Mention:
Nest by Barbara Bell



Swimmer Collage by Colleen Bennett



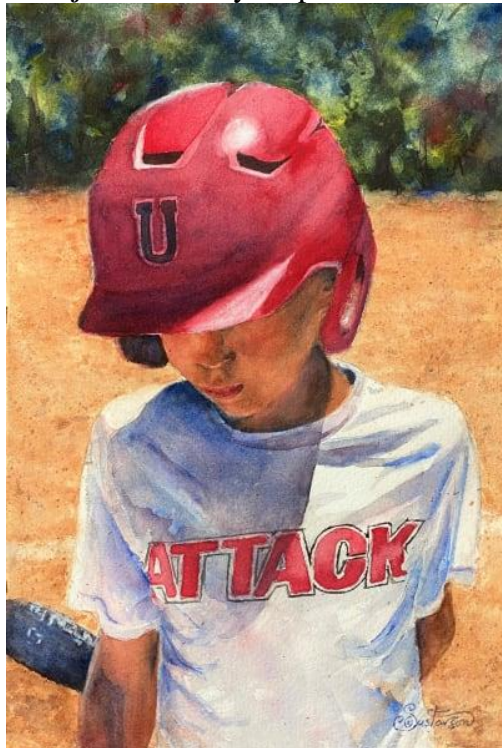
Envision by Stephanie Chang



Lise by Linda Greigg



Love of Baseball by Stephanie Gustavson



Curious by Nancy Jakubowski



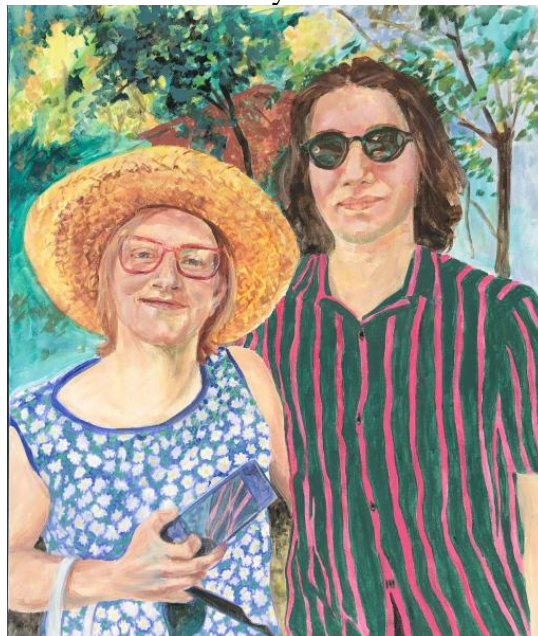
Poet by Isabella Martire



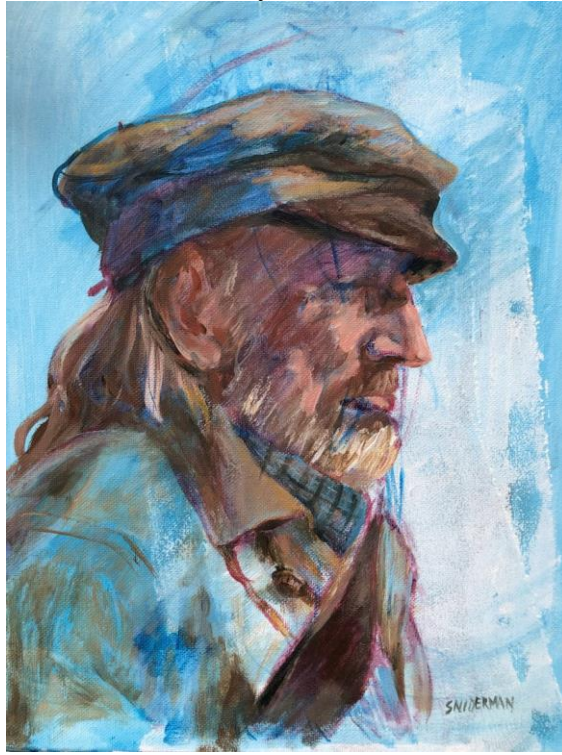
Slight of Hand by Patrick Sieg



Jennie and Sho by Sonia Sniderman



Old Soldier by Sonia Sniderman



Connection – Mated Pair of White Egrets by Freddi Weiner



Still Here by Stacy Yochum



**Rockville Art League
Portraits: Creatures Great or Small
Judge's Remarks: Maud Taber-Thomas**

I want to thank the Rockville Art League for inviting me to judge this wonderful show. It has been a delight to see and get to know the wide variety of work represented here, exploring the portrait in all its forms, from humans to animals, from the meticulously scientifically accurate to the expressively abstract, from the adorable to the poignant to the terrifying. Congratulations to everyone!

Portraits are different from other kinds of artwork because the viewer has an instant, visceral, and instinctive connection with the person or creature represented, the same sort of connection we feel when meeting someone in real life. It's hard to describe or quantify, but for me, this quality of life is the most important thing in a portrait—is there a real sense of a soul and presence emanating from the artwork? Often this quality comes not from the literal subject matter but from the formal, technical, and expressive qualities of how the person or animal is represented. The colors, composition, scale, and brushstrokes can give just as much of a sense of personality and energy as the image itself. This sense of a soul really inhabiting the artwork can come from the simplest or the most complex composition, the most detailed and faithful rendering, or the loosest and sketchiest, the most traditional techniques, or the most innovative.

It's hard to describe precisely, but I think we all know it when we look at and examine a painting, and we feel that the painting is looking back at us.

1st Place: *Take these Broken Wings* by Isabella Martire

I first saw this portrait in a photograph, and when I finally saw it in person, I realized that the photo had only given me a small inkling of the effect that this portrait creates. When I saw it in person, it blew me away. This is a phenomenon that I have noticed in many great paintings—that they have ineffable qualities not captured by a photographic reproduction. It's always hard to pin down what exactly these qualities are, but with this painting, the first thing that struck me was the scale of the artwork. The larger-than-life size creates a sense of power that instantly grabs the attention of the viewer and projects energy and strength. The quiet, poised expression on the young woman's face contrasts with this, and simultaneously gives her a sense of thoughtful, wise, and quiet command. The physical use of paint is also something that is hard for the camera to capture: the softness of some of the edges in this painting, contrasting with the sharp paint strokes of the highlighted areas create a sense of depth; so that the painting seems to leap out from the surface of the canvas. The use of color in this painting is also unexpected and stunning; the blues in the shadows contrast with the warmth in the highlights, allowing the skin to glow in an extra-luminous way.

In writing this, I realize that I'm using the word "contrast" a lot—the contrast of the scale with the woman's expression, the contrast between different painting techniques, and color contrasts. These elements make the portrait subject feel like a multidimensional and complex personality. She's not simply an attractive young woman, but a person with depth, a person whom it would take a long time to get to know. That's what makes this a compelling portrait—just like meeting someone in person, we are drawn to her and want to spend time getting to know her better and unraveling the mysteries of her character.

2nd Place: *Zelda in Nature* by Ally Morgan

This striking portrait combines a faithful representation of an individual dog with an innovative, vibrant, and magical use of colors. The dog's expression is instantly recognizable, joyously adorable, and meticulously rendered. The variety of marks beautifully creates the textures of tactile fur, a shiny nose, and soft background. The colors are surprising and unexpected, but they unquestionably work to create a sense of luminosity throughout the composition, balancing every color of the rainbow in a magical, yet believable way.

3rd Place: *Plantain Queen II* by Jordan Henson

This photograph uses color, composition, and subject matter to create a very striking and iconic image. The woman at the center of the image seems to have chosen her outfit to perfectly harmonize with the plantains she is carrying, and the blues in the distant background work perfectly to set these off. The light area surrounding her sets off the strength of her silhouette. The pose and composition of this photograph evoke the caryatids of Classical architecture, but in a totally new setting and environment. While not a traditional portrait, we get a strong sense of this woman just by seeing her

back—from her amazing fashion choices to her assured, purposeful posture, and her comfort and confidence in the environment.

Honorable Mention:

Nest by Barbara Bell

Swimmer Collage by Colleen Bennett

Envision by Stephanie Chang

Lise by Linda Greigg

Love of Baseball by Stephanie Gustavson

Curious by Nancy Jakubowski

Poet by Isabella Martire

Slight of Hand by Patrick Sieg

Jennie and Sho by Sonia Sniderman

Old Soldier by Sonia Sniderman

Connection – Mated Pair of White Egrets by Freddi Weiner

Still Here by Stacy Yochum

Glenview Mansion Art Gallery Upcoming Exhibits

Glenview Mansion Art Gallery is located at 603 Edmonston Dr. at the Rockville Civic Center. Open weekdays, Monday – Friday, 9:00am-4:30pm. Please check the Glenview Mansion website <https://www.rockvillemd.gov/389/Glenview-Mansion> before coming out or call 240-314-8681. Plenty of parking and there is an elevator to all levels of the gallery. The gallery is located on the 2nd floor. It is quiet and uncrowded during the week. The **Meet the Artists** events are free and open to the public. Thank you for supporting the arts and your fellow artists.

Rockville Art League Juried Members' Winter Show

On Exhibit: December 3 – January 12

Congratulations to all members who had work in this amazing multimedia show with special CONGRATULATIONS to the award-winning artists. We thank **Palden Hamilton** for all his work on this show, including his memorable presentation of awards and insightful commentary, and also talking with the artists at the opening in December. His recorded commentary is available on RAL's YouTube.

Rockville Art League

Portraits: Creatures Great or Small

On Exhibit: Jan. 21 – Feb. 16

From man's best friend to a person of interest. A beloved friend or family member, a personable pet, a neighbor, a passerby, a classroom model, a frequent visitor to one's yard, park or in the wilds, or even the one seen in the mirror. Perhaps endearing, influential, beautiful, or whimsical, with a story to tell. The artists in this show offer their unique portrayals of these special creatures in a variety of mediums.

This show is sponsored by the Rockville Art League and the City of Rockville. We are honored to have renowned portrait artist Maud Taber-Thomas award prizes of recognition. Her remarks about the show and her awards choices are posted on the virtual show. This show opened on Sunday, Jan. 21 and is on

display at Glenview Mansion Art Gallery through Feb. 16. (Artwork pick up is on Tuesday, Feb. 20, 10am-1pm). Come see it! Bring your friends. Art is best seen in-person, but a virtual view is available on the RAL website.

Also, on display in the gallery is the work of talented local students in grades 6-12 in the *2024 Rockville Student Juried Art Show*.

The poster features a black background with large, stylized green text for 'Glenview Mansion'. To the right, it says 'Glenview Mansion Art Gallery AT ROCKVILLE CIVIC CENTER PARK' and 'On Exhibit: Jan. 21-Feb. 16'. Below this, it reads 'Rockville Art League' and '“Portraits: Creatures Great or Small”'. At the bottom, there are four small images of artworks with their titles and artists' names: a dog, a self-portrait, a bird, and a man in a jacket.

Glenview Mansion
Glenview Mansion Art Gallery
AT ROCKVILLE CIVIC CENTER PARK
On Exhibit: Jan. 21-Feb. 16
Rockville Art League
“Portraits: Creatures Great or Small”

Zelda in Nature
by Ally Morgan

Self Portrait
by Mauricio Athie

Mr. Poe
by David Allen

Attitude
by Stacy Yochum

The flyer contains text about the exhibition dates, location, and artist meet-and-greet. It includes contact information for the gallery and the City of Rockville logo.

On Exhibit: Jan. 21-Feb. 16
Rockville Art League
“Portraits: Creatures Great or Small”

Meet the artists from
1:30-3:30 p.m., Sunday, Jan. 21.

Event is free and open to the public.

For information, call 240-314-8681 or 240-314-8660.
For recorded directions, call 240-314-5004. Glenview Mansion Art Gallery is wheelchair accessible. Gallery Hours: Monday-Friday, 9 a.m.-4:30 p.m. Gallery closed on official holidays.

Glenview Mansion Art Gallery
at Rockville Civic Center Park
603 Edmonston Drive
Rockville, MD 20851

 City of Rockville
Get Into It



Glenview Mansion Exhibition:

The Colorists

On Exhibit: February 25 – April 5

Six fine local Maryland artists, Holly Buehler, Sandy Fritter, Joanie Grosfeld, Jeanne Powell, Penny Smith, and Kathleen Zeitang have created a multifaceted show in vivid colors and bold brush strokes in their unique styles ranging from impressionistic to the abstract. This show is sponsored by the City of Rockville and opens on Sunday, February 25, 1:30-3:30pm. Everyone is welcome.

Virtual Shows, Sales, and Inquiries

Did you know that you can access past RAL virtual shows? Virtual shows are updated and posted to the Rockville Art League website by webmaster Michael Auger. Several of our recent shows are still viewable.

How to access a past virtual show:

Go to <http://rockvilleartleague.org> and click on the white button for the current virtual show. If you haven't visited the RAL page for a while you may need to hit refresh. Currently, the new *Portraits: Creatures Great or Small Show* is posted there.

Once you open the current virtual show, click on the word “**Exhibitions**” and you will see the show cards from prior shows. Find the show card of the one you would like to view and click on the name of the show (ex: *Essence of Summer*, *Times5*, *Fairweather Artists*, *RAL Juried Members’ Winter Show*, etc.) right below the show card and you can view that show. You can view it altogether by “**Artwork**” or, if you prefer to see it by *specific artist*, click on the word “**Artist**”.

You can inquire or send a purchase request on the piece on the virtual show. On occasion, we receive inquiries for work still viewable through our virtual shows. Any inquiries or purchase requests are forwarded to our artists.

How to inquire about or purchase a piece in a RAL Show at Glenview:

If you are in the gallery at Glenview and you are interested in a piece, click on the **QR code** found right on the label below the work. Instructions are also found in the various rooms of the gallery. It’s easy. Just **aim your smartphone at the QR code** and *click on the link* that appears and it will take you to the piece. Once there, you will see the artwork, the medium, dimensions and, if the piece is available, the price. You can click on “Inquire” or “Purchase” if you are interested further. We forward all inquiries or purchase requests to the artist.

If you are at Glenview and forgot your phone or just can’t quite figure out a QR code, no worries. Either take a picture of the label or write down the name of the piece and contact either Lisa Sieg (jshows@rockvilleartleague.org) or Patrick Sieg (president@rockvilleartleague.org). Or go to the RAL website and look for us under contacts.

These shows are beautiful thanks to our talented members.

Montgomery Art Association and Art Clinic Online: *Plein Air Forum*

Montgomery Art Association (MAA) has teamed up with *Art Clinic Online* and is co-sponsoring a *Plein Air Forum* on Saturday, January 27, 10:30-11:30am via zoom.

MAA has kindly extended an invitation to **Rockville Art League** members to join in to hear **Christine Lashley, Nancy Tankersley, Jill Basham, and Stewart White** discuss the state of plein air painting in the DMV area as well as their experiences working the plein air competition circuits.

Members will remember renowned artist Christine Lashley who juried our *RAL Juried Members’ Winter Show* in 2021 and offered a presentation to our group.

Mark your calendars for **Jan. 27, 10:30-11:30am via zoom** and plan to join in. There is no sign-up fee. For the zoom link and more information, please visit: <https://www.jjbruns.com/aco-artist-discussion-plein-air/>

Many thanks to Montgomery Art Association!

MEMBER NEWS

Nancy Jakubowski's work, *Color=Life* (pictured below), has been accepted into the show: **PRISM: CONNECTIONS IN COLOR 32ND ANNUAL STRATHMORE JURIED EXHIBITION. JURORS: ZOMA WALLACE, GLEN KESSLER.** Fri, January 26–Sat, March 2, opening reception, Feb. 1





CREATIVE COLLEAGUES



EXHIBIT: FEB 1ST - FEB 29TH

RECEPTION: FEB 10TH 2PM-4PM



the beachKraft art Gallery 18200 GEORGIA AVE, UNITS N+O, OLNEY, MD 20832

Pearl Chang, Barbara Gelman, Barbara Meima, and Elizabeth Steel are four of the seven experienced artists (sculptors, painters, mixed media artists) who, as members of CREATIVE COLLEAGUES, are banding together to bring you a very special exhibit at the beachKraft Gallery.

The picture above shows one piece of each artist's work as well as the location and dates of the show and the reception, to which you are all invited.

A Watergate Gallery group show, “Unfolding Dreams,” offers a more enchanted idea of the natural world than Thorp or Arrietta’s. With 32 artists represented, the reveries are diverse, but four forest paintings dovetail neatly. **Jasmin Smith’s** Rousseau-like scene centers on bright fronds set off by a dark backdrop. Seemingly even more humid is Sabrina Pedreira’s array of hot-pink flowers, while Cheryl Bearss’ picture of bare trees swathed in moss is mostly, and moistly, green. Fran Beard employs a similar color scheme but a less realistic style in “Garden Dreamscape,” which fractures the imagery in a way that suggests stained glass. Doug Dupin constructs a three-dimensional ode to the woods, placing green eggs inside a hollowed section of tree trunk. This piece’s near-opposite is Craig Kraft’s homage to Constantin Brancusi’s “Endless Column,” which edges in white neon the hard-edge geometric outline of the original. Dreaming turns a bit more ominous in Aurie Hall’s collage, whose three panels observe a woman’s face as it’s overgrown by yellow flowers. The darkest piece, both literally and symbolically, is a Helen Zughuib painting in which four people in colorful robes, probably a family, face away from the observer and toward solid blackness. The picture’s title, “Tomorrow We Will Dream,” can be read as either hopeful or despairing, but that dark void is not auspicious. Unfolding Dreams Through Feb. 10 at Watergate Gallery, 2552 Virginia Ave. NW. watergategalleryframedesign.com. 202-338-4488

~Mark Jenkins, January 19, 2024, *The Washington Post*

Call for Art: Building A Caring Community Through Art

About the Exhibition:

The Priddy Library at the Universities at Shady Grove invites artists to submit recent artwork reflecting on the challenges facing our community and the cultivation of support, care, and healing among one another. This exhibition will highlight the relationships that strengthen our community and is a good opportunity to enjoy the art that defines us. The library is looking for art that is strong, creative, and that builds bonds within the community.

The exhibition will take place at the [Priddy Library, Universities at Shady Grove](#) from Friday, March 29 through Sunday, April 28.

The exhibition will be curated by Yuri Stone and Ariana Kaye, members of the Curatorial Team at Glenstone Museum.

What Can Submit:

Open to all artists, 18 years and older, currently residing in Maryland. All works submitted should be original artworks created in the last 5 years. Acceptable mediums include all traditional art media (e.g., oil, watercolor, acrylic, pastel, mixed media, gouache, etc.), and sculptures. Artwork should not exceed 58 inches in height, width, or depth. All pieces should be framed, wired, and ready to hang. Small sculptures accepted. No entry fee is required.

Guidelines for Submission:

- Artists must e-mail their submissions using the Entry Form. Under ‘Description/Explanation’ describe how the art connects with the theme of “building a caring community.”
- Submit images of all works using jpeg format.
- Please also attach the artist's resume and a one-paragraph artist statement.

- For the submission of sculptures, provide front, back, and side images.
- The deadline for submissions is **March 11, 2024**, by 5pm. Only accepted artists will be notified.
- Notifications of acceptance will be emailed before March 22, 2024.

How to Submit:

All entries should be submitted via the online entry form: <https://forms.gle/JBjnobodfD6q2bat6>

Delivery and return of artwork:

- All accepted entries must be the same as the images submitted and must be framed and ready to hang. Works must be shipped to Priddy Library in reusable cartons and must include a prepaid return shipping level. No peanuts should be used. Shipments not conforming to these guidelines will not be accepted.
- Shipments should arrive before 5:00 pm on March 27, 2024. Hand-delivered work will be accepted between Monday, March 25 through Wednesday, March 27, between 9:00 am and 5:00 pm.
- Artwork can be picked up on May 1 and 2 between 9:00 am and 5:00 pm. Return shipping will be completed by May 15, 2024.

Insurance and Liability:

The artists must always insure artwork. While the Priddy Library will take utmost care to avoid damage to the art pieces, by submitting their work, artists agree that the Library and the Universities at Shady Grove are not responsible for any damage, theft, loss, or unforeseen circumstances while handling, exhibiting, or shipping the works. Insurance is the responsibility of each artist, including shipping insurance.


Sales: Artists who wish to sell their works should include the price on their entry form and authorize the Priddy Library to place the potential purchaser directly in touch with the artists. The library will not sell the art pieces but will provide a list of prices to the public and include the price on the signage of the work.


Discount on Custom Framing

Jae Shin has been working as a professional picture framer for 2 decades at the Framers' Workroom located in Tenleytown, DC. Jae offers 15% off on custom framing jobs for RAL members. Please feel free to contact Jae for any framing jobs. Framers' Workroom, 4431 Wisconsin Ave., NW, Washington DC 20016


202-363-1970. Store hours: Mon-Sat 10:00-5:30. www.FramersWorkroomDC.com

Email: Jaeshin@FramersWorkroomDC.com

 **The Compass Atelier**
*Art classes for beginners and experienced artists
Special workshops Study Abroad
Home of the revolutionary Master Artist Program*



TheCompassAtelier.com TheCompassAtelier@gmail.com



A Work of Art by Debra Halprin
Giclée Printing and Photography Service
Create Fine Art Prints of your Artwork
on Watercolor Paper or Canvas
Mastering the Fine Art of Giclée Printing

HalprinArt.com
301-910-4750

email: Debra@HalprinArt.com
in Rockville, Maryland

NEWSLETTER SUBMISSIONS

Is your art included in a show? Have other news you wish to share with RAL members?
Please send your submissions by the **15th** of each month for inclusion in the next newsletter, to:
newsletter@rockvilleartleague.org

GLENVIEW MANSION SHOWS

Glenview Mansion Schedule				
2024				
Exhibition Dates:	ARTISTS	Delivery of Artwork 10am-1pm	<i>Meet the Artists</i> Opening Event	Pick-up Artwork 10am-1pm
JAN 21 – FEB 16	RAL Portraits: <i>Creatures Great or Small</i>	WEDNESDAY, Jan. 17 10:00 – 1:00pm	Sunday, Jan. 21 1:30-3:30pm	TUESDAY, Feb. 20 10:00am-1:00pm
FEB 25 – APR 5	Glenview Exhibit: <i>THE COLORISTS</i>	TUESDAY, Feb. 20 10:00 – 1:00pm	Sunday, Feb. 25 1:30-3:30pm	MONDAY, April 8 10:00am-1:00pm
APR 14- MAY 10	Glenview Exhibit: Gaithersburg Camera Club	MONDAY, April 8 10:00am-1:00pm	Sunday, Apr. 14 1:30-3:30pm	MONDAY, May 13 10:00am-1:00pm
MAY 19- JUNE 21	Rockville Art League Juried Members' Spring Show	Details to come	Details to come	Details to come

Artists displaying work at Glenview will be contacted with detailed information about their shows, including the required show agreement. Labels and support to hang the show will be provided. The RAL shows are virtual on our website as well as in person at Glenview.

Meet the Artists events are free and open to the public. Plenty of parking and there is an elevator to all levels of the gallery. The gallery is open weekdays Monday-Friday, 9am-4:30pm. Closed on official city holidays. Please check Glenview Mansion website before visiting.

Thank you for supporting the arts and your fellow artists!



RAL BOARD OF DIRECTORS

Name	Position	E-mail
Patrick Sieg	<i>President</i>	president@rockvilleartleague.org
Vacant	<i>President Elect</i>	president@rockvilleartleague.org
Lisa Sieg	<i>Vice President/ Exhibits Coordinator</i>	jshows@rockvilleartleague.org
Richard Fisher Sarah Sohraby	<i>Program Coordinators</i>	programs@rockvilleartleague.org
Lisa Sieg	<i>Volunteer Coordinator</i>	volunteer@rockvilleartleague.org
Vacant	<i>Membership Coordinator</i>	membership@rockvilleartleague.org
Rob Gale	<i>Treasurer</i>	treasurer@rockvilleartleague.org
Cathy McDermott	<i>Secretary</i>	secretary@rockvilleartleague.org
Susan Dunnell	<i>Newsletter Editor</i>	newsletter@rockvilleartleague.org
Liliane Blom	<i>Liaison Officer</i>	liaison@rockvilleartleague.org
Dave Allen	<i>Publicity/marketing</i>	publicity@rockvilleartleague.org
Helen Wood	<i>Communications</i>	communications@rockvilleartleague.org
Vacant	<i>Hospitality</i>	hospitality@rockvilleartleague.org
Diane Jeang	<i>Member Shows</i>	mshows@rockvilleartleague.org
Michael Auger	<i>Webmaster</i>	webmaster@rockvilleartleague.org
Eileen Mader	<i>Founder</i>	

Rockville Art League
P.O. Box 4026
Rockville, MD 20850

