



RockvilleArtLeague.org Vol. XXXIII No. 4 December 2023

Next Meeting: tbd

Message from the President, Patrick Sieg

Dear Rockville Art League Artists,

I am much looking forward to our Juried Members' Winter Show 2023/2024.

We had well over 200 entries and the work was beautiful.

Our judge, Palden Hamilton has devoted much time and effort to ensure the pieces selected for the show will make a beautiful exhibition.

Now he is undertaking the even harder job of determining which pieces deserve special recognition via awards.

Many thanks to all artists who took a risk by entering our juried show with their beautiful and thoughtful work.

I am in awe of our artists with their creativity, artistic expression, and the quality of their work.

As a reminder, the work included in the show will be on display virtually and in the Glenview Mansion Art Gallery opening on December 3, 2023, and continuing to January 12, 2024.

There will be a "meet the artists" event on December 3. We look forward to judge Hamilton joining us as we hand out awards to our recognized artists at 2:00 pm that afternoon.

We will also have a recorded presentation where Palden can share his thoughts about the award-winning artworks. Yes, we ask much of our judges.

We artists are creative people and creativity takes work and practice. Society doesn't seem to value or praise creativity nearly enough, only to the extent that there is profit in it. Your purpose is to be you in everything you do and create. You are your own evolving masterpiece and please realize that you are both the sculptor and the sculpture, the painter and the portrait.

I am grateful that I am on the learning and creating journey of an artist and that it can last a lifetime.

One of my favorite artists passed away on Christmas day, 2021, after more than 101 years of life and creativity. Wayne Thiebaud painted what he loved, and his work still moves me...be it pastries or portraits or scenes of streets in San Francisco.

When he was young and starting his art career, he visited galleries in NYC where he hoped to secure representation. He showed his work in person and was turned away at one gallery after another. His work was different and unique, and he believed that his work was beautiful. He had confidence in his creative spirit, and he was resilient. Finally, as the story goes, as he was resting on a curb, weary from his string of rejections, when a nearby gallery owner happened by and asked him to show his work one more time. Wayne did, the owner recognized the quality in the work and granted Thiebaud a show. The exhibit sold out, proving that there can be reward and validation in work created with both love and persistence.

Thiebaud was averse to labels such as "fine art" and described himself as "just an old-fashioned painter". Wouldn't we all like to be old-fashioned painters like him?!

We had a terrific presentation from Dr. Mariana Kastrinakas in early November. I was amazed at her story and how being focused and confident to explore many art forms led to such creativity and resiliency. Her journey in both science and art was inspiring and allowed her to come to terms with and overcome so many obstacles. She is an inspiring artist and a wonderful person.

We have a beautiful show on display at Glenview Mansion (and virtually) right now and I hope you will find the time to view it. Our "Fairweather Artists" exhibit includes work from 11 members of our art league. Please see it and you will be glad you did.

Fall is ending and shorter days and longer evenings are upon us. I look forward to creating new work in the cooler seasons and find inspiration in the fall colors that find their way into my winter work. Not to mention the inspiration I have gotten from the entries to our Winter Juried Show.

Thank you for being members of the Rockville Art League, for your creativity and for your resiliency.

Sincerely,

Patrick Sieg
President
The Rockville Art League

Rockville Art League Fall 2023 Speaker Series

These programs will be on Zoom. Zoom invitations will be sent out to members a few days prior to the presentations and we plan to record them.

Rockville Art League Fall Speaker Series 2023

November 2: *A Journey of Art and Healing* with Mariana Kastrinakis



Thank you to those who were able to join us Thursday evening, **November 2**, to hear art educator, mixed media artist and physician Mariana Kastrinakis discuss her artist path which has combined learning, healing, and creating art. A BIG THANK YOU to Mariana for sharing her story and beautiful work with us, beginning with watercolors to her exploration of acrylics, collage, and oil painting in a mixed media approach. Her view that art making is a healing human endeavor open to all helps to make our world that much better. For more information please visit: www.kastrinakisart.com
The recording of this zoom was sent out to all members on Nov. 3 and is also available to view on RAL's YouTube. You can easily access this presentation and others by going to our website and clicking on the YouTube icon at the bottom of the page. Many thanks to Helen Wood for her work on this.

Mariana Kastrinakis is also co-founder of **Art Clinic Online (ACO)** along with artist J.Jordan Bruns. Their mission is to create dialogue, relationships, and community among artists of all levels working in the DMV area. Every other Saturday, 10:30-11:30am on zoom, a featured artist showcases their work and takes questions from participants. The next discussion will be on Saturday, **December 9, 10:30am** and will feature designer and illustrator Jeffrey Everett. Everyone is welcome. To find out more about the program and to join in the zoom visit: <https://www.jjbruns.com/art-clinic-online/>

Rockville Art League
Portraits: Creatures Great or Small
January 21 - February 16
Glenview Mansion Art Gallery

Entries accepted: Friday, December 1 – Tuesday, January 2

Rockville Art League *members in good standing* are invited to submit original works of *up to three (3) pieces of art for consideration* for the show ***Portraits: Creatures Great or Small*** to be exhibited at the Glenview Mansion Art Gallery. This show is sponsored by the City of Rockville Arts Division and the Rockville Art League.

The theme of this exhibit is portraits.

From man's best friend to a person of interest. A beloved friend or family member, a personable pet, a neighbor, a passerby, a frequent visitor to your yard or park - a bird, deer, or fox - or even the one you see daily in the mirror or in your art class. Perhaps one that is endearing, beautiful, whimsical, that has a story to tell.

We are looking for original portrayals of these special creatures in your life to fill the gallery at Glenview in January.

This show will follow the *RAL Juried Members Winter Show* and will be in conjunction with the ***2024 Rockville Student Juried Art Exhibit***.

Depending on the number of pieces accepted in the student show will determine how many pieces we can accommodate for this themed show.

Original artwork only may be submitted in the following mediums only:

- oils/acrylics
- watercolors
- drawings, pastels, hand-pulled prints
- mixed media, collage, experimental
- photography
- sculpture
- Note: the work for this show may have been exhibited in a prior show and acceptance in this show does not preclude its entry in a future show.

Deadline:

Each member may submit up to three (3) pieces for consideration:

Friday, December 1 – Tuesday, January 2

IMPORTANT! Please read the Show Agreement: **by submitting work into this show, you agree to the terms listed in the show agreement listed here:**

“I agree to the rules of the show as presented in this show call and the schedule below, and that my entries are my original works. I will not hold the Rockville Art League (RAL), Glenview Mansion, or the City of Rockville responsible for any possible loss or damage to my entries. As with any show, I understand that all reasonable care will be taken in the handling of my artwork. I give RAL, Glenview Mansion, and the City of Rockville permission to use images of my artwork and publish them as appropriate. I acknowledge a commitment to donate 20% of the sale price of my work, if sold during this show at Glenview to the City of Rockville.”

All two-dimensional (2-D) pieces will need to be framed, gallery-wrapped or professionally finished, securely wired, ready for hanging with the *maximum measurement* of any framed side of **48 inches**. If submitting unframed work, the edges should be painted or finished. **NO wet paint**. Entries not meeting the show conditions will not be accepted. RAL retains the right to determine the suitability of the work for entry in this show.

HOW TO ENTER:

To submit work, please use *your same personal link and password* that was sent to you to enter your work for the *RAL Juried Members' Winter Show*.

When you submit work, you will need to complete the following for each of your pieces (*up to 3 entries only*):

- **Title**
- **Medium**
- **Price** (*not wholesale!*) (If Not for Sale, please leave blank and we will confirm with you)
- **a clear image** (jpg.) of your artwork (no clear, no frame, no reflection, no furniture, etc.)
- **Dimensions** (note: *depth is for sculpture only*). If entering 2-D work, height, and width **ONLY**.
- Description is optional; date is optional (do not check *circa*).

Note: When you submit work, *if you entered artwork in the RAL Shows in this past year*, you will still see the images of those pieces. They are marked appropriately for those shows within the system.

Schedule:

Entries accepted: Dec. 1 – Jan. 2

Exhibition dates: Jan. 21 – Feb. 16

TUESDAY, January 2: deadline for all submissions.

Friday, Jan. 5: notifications of acceptance sent out to all members and posted on RAL website.

TUESDAY, January 16: drop off artwork at Glenview Mansion, **10:00am-1:00pm**. (same date/time as pick up of *RAL Juried Members' Winter Show*)

SUNDAY, Jan. 21: “Meet the Artists” opening at Glenview. 1:30-3:30pm

TUESDAY, Feb. 20: pick up of artwork 10:00am-1:00pm.

This show will be exhibited in person at Glenview Mansion. Additionally, the virtual show will be available to view on the Rockville Art League website and sent to all members to share.

We look forward to seeing your creations.

Deadline for submissions: Tuesday, January 2

As always, if you need help, please ask *ahead of the deadline*.

NOTE: please be aware that the time between the notifications and the delivery of the artwork is 2 weeks.

Questions or need help, contact:

Lisa Sieg: jshows@rockvilleartleague.org

Patrick Sieg: president@rockvilleartleague.org



Glenview Mansion Art Gallery
at Rockville Civic Center Park

2024

CALL FOR ARTISTS

Rockville Student Juried Art Exhibit

Enter online by:
**Thursday,
Nov. 30.**

Meet the Artists:
1:30-3:30 p.m.
Sunday, Jan. 21.

On exhibit:
Jan. 21-Feb. 16.

City of Rockville's Arts Division and the Rockville Art League announce the 2024 Rockville Student Juried Art Exhibit.

Students (grades 6-12) who live or attend school in the corporate limits of the City of Rockville are eligible. Enter online at arcg.is/0yrK100.

HOURS AND LOCATION

Glenview Mansion Art Gallery at Rockville Civic Center Park
603 Edmonston Drive, Rockville, MD 20851

Gallery Hours: Monday through Friday, 9 a.m.-4:30 p.m.; closed official city holidays.
Call 240-314-8660 to check on availability of gallery for viewing.

FOR MORE INFORMATION

Please contact Betty Wisda, Arts Programs Supervisor, at bwisda@rockvillemd.gov.

DECEMBER 3, 2023 – JANUARY 12, 2024
Glenview Mansion Art Gallery

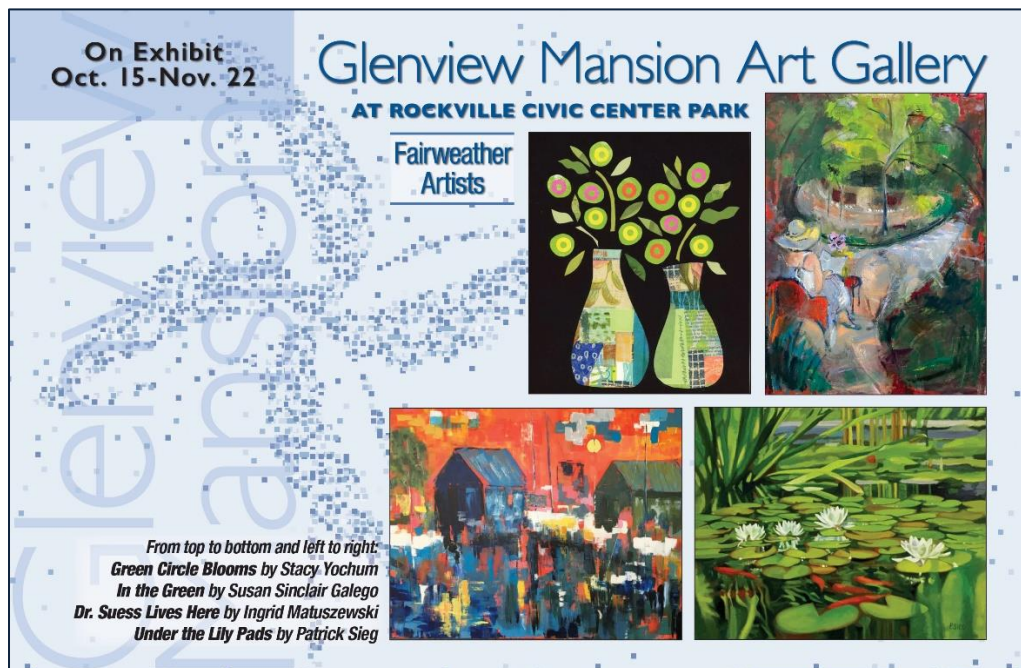
Glenview Mansion Art Gallery Upcoming Exhibits

Glenview Mansion Art Gallery is located at 603 Edmonston Dr. at the Rockville Civic Center. Open weekdays, **Monday – Friday**, 9:00am-4:30pm. Please check the Glenview Mansion website *before* coming out or call 240-314-8681. Plenty of parking and there is an elevator to all levels of the gallery. The gallery is located on the 2nd floor. It is quiet and uncrowded during the week. The *Meet the Artists* events are free and open to the public. Thank you for supporting the arts and your fellow artists.

Exhibitions for 2023 and January 2024

Times5: September 10 – October 6

Congratulations to artists/teachers Mygenet Harris, Dustine Hayes, Michael Metzner, Tom Ruttkay, and Jane Walsh on their *Times5* Exhibit at Glenview Mansion. It was an amazing show, full of creative energy well received by so many in our community. We are delighted to have them as new RAL members too. The *Times5* virtual show is still viewable on our website by clicking on the button under the word “Exhibitions”. Once on that page, click on the word “Exhibitions” on the left and *select the show* you would like to view *by show card*.



<p>On Exhibit: Oct. 15-Nov. 22</p> <hr/> <p>Fairweather Artists</p> <hr/> <p>Meet the artists from 1:30-3:30 p.m. Sunday, Oct. 15.</p> <p>These 11 Fairweather Artists, Nancy Arons, Ellen Broadman, Sarah Clayton Davis, Karen Kuell Epstein, Susan Sinclair Galego, Lee Ann Howdershell, Jennifer Howard, Ingrid Matuszewski, Lisa Sieg, Patrick Sieg and Stacy Yochum, have created an extraordinary multimedia show of beautiful vistas, vignettes and subjects.</p> <p>For information, call 240-314-8681 or 240-314-8660. For recorded directions, call 240-314-5004. <i>Glenview Mansion Art Gallery is wheelchair accessible.</i> Gallery Hours: Monday-Friday, 9 a.m.-4:30 p.m.; gallery is closed on official city holidays.</p> 	<p>Glenview Mansion Art Gallery at Rockville Civic Center Park 603 Edmonston Drive Rockville, MD 20851</p> 
---	---

Fairweather Artists: October 15 – November 22

Members of ***Fairweather Artists***, Nancy Arons, Ellen Broadman, Sarah Clayton Davis, Karen Kuell Epstein, Susan Sinclair Galego, Lee Ann Howdershell, Jennifer Howard, Ingrid Matuszewski, Lisa Sieg, Patrick Sieg, and Stacy Yochum with work in oils and acrylics, gouache, collage, and photography present an extraordinary show of beautiful vistas, vignettes, and subjects. The exhibit opened on **Sunday, October 15**. Thank you to everyone who attended. For a more art focused view of the show, come to the art gallery during the week to enjoy over 125 works of art.

Rockville Art League Juried Members' Winter Show: December 3 – January 12

Juried by Palden Hamilton. This is one of our semi-annual large, juried member shows, with one in the winter and another in the spring. Please see the notification of accepted artwork posted on our website (which was also mailed out to all members on Nov.

9). http://rockvilleartleague.org/ral_wintershow2023.pdf

NOTE: If you have work juried into this show, you or your designee must **deliver your work on Tuesday, Nov. 28, 10:00am-1:00pm** to Glenview Mansion to be included in this show. Pick up of artwork is on **Tuesday, Jan. 16, 10am-1pm**. There is an elevator to all levels of the gallery.

Everyone, please mark your calendars for the opening on **SUNDAY, Dec. 3, 1:30-3:30pm**. Awards at 2PM. We hope to see you there!

Coming Soon!

Portraits: Creatures Great or Small: January 21 – Feb. 16, 2024

Entries accepted: **December 1 – January 2**

This show will follow the ***RAL Juried Members' Winter Show*** and will be in conjunction with the ***2024 Rockville Student Art Show***. Depending on the number of pieces accepted in that show will determine how many pieces we can accommodate for this themed show.

This show is sponsored by the City of Rockville Arts Division and the Rockville Art League.

We will be looking for your *original portrayals* of these special creatures in your life to fill the gallery at Glenview in January. The work for this show may have been exhibited in a prior show and acceptance into this show does not preclude its entry in a future show.

Please read all details, including how to enter, the schedule, etc., in the show call for entries, found in this newsletter.

Virtual Shows, Sales, and Inquiries

Did you know that you can access past RAL virtual shows? Virtual shows are updated and posted to the Rockville Art League website by webmaster Michael Auger.

Several of our recent shows are still viewable.

How to access a past virtual show:

Go to <http://rockvilleartleague.org> and click on the white button for the current virtual show. If you haven't visited the RAL page for a while you may need to hit refresh. Currently, the new *Fairweather Artists* Show is posted there, and it will soon be replaced by the *RAL Juried Members' Winter Show*. Once you open the current virtual show, click on the word "**Exhibition**" and you will see the show cards from prior shows. Find the show card of the one you would like to view and click on the name of the show (ex: *Times5*, *Essence of Summer*, *RAL Juried Members' Spring Show*, etc.) right below the show card and you can view that show. You can view it altogether by "**Artwork**" or, if you prefer to see it by specific artist, click on the word "**Artist**".

On occasion we receive inquiries about work still viewable through our virtual shows. Any inquiries or purchase requests are forwarded to our artists.

Purchase Requests or Inquiries about the current show at Glenview:

If you are in the gallery at Glenview and you are interested in a piece, click on the **QR code** found right on the label below the work. Instructions are also found in the various rooms of the gallery. It's easy. Just **aim your smartphone at the QR code** and *click on the link* that appears and it will take you to the piece. Once there you will see the artwork, the medium, dimensions and, if the piece is available, the price. You can click on "Inquire" or "Purchase" if you are interested further. We forward all inquiries or purchase requests to the artist.

If you are at Glenview and forgot your phone or just can't quite figure out a QR code, no worries. Either take a picture of the label or write down the name of the piece and contact either Lisa Sieg (jshows@rockvilleartleague.org) or Patrick Sieg (president@rockvilleartleague.org). Or go to the RAL website and look for us under contacts.

These shows are beautiful thanks to our talented members.

MEMBER NEWS



Caroline Orrick



Ann Rossilli



Penny Smith



Kathy Stowe



Sara Becker



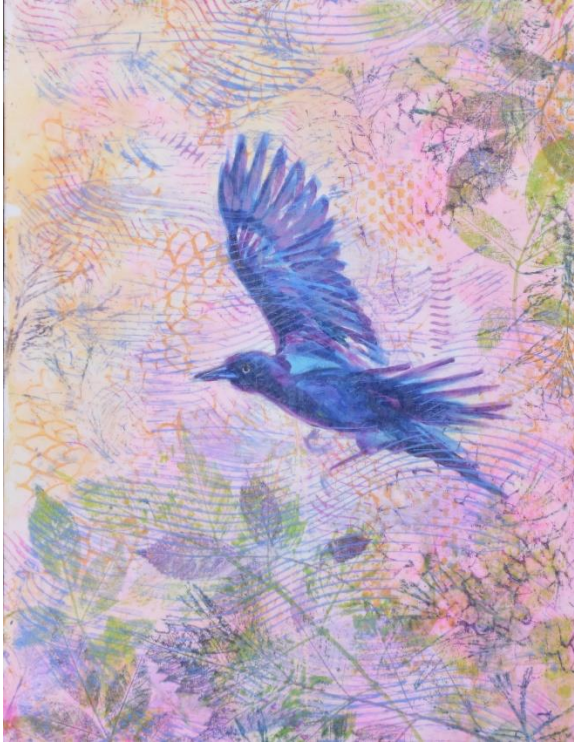
Maureen Ward



Nancy Butler

“The Seven Palettes” celebrate ten years of being together with an exhibit at Maplewood Park Place at 9707 Old Georgetown Road, Bethesda Maryland 20814. A selection of landscapes, still life, figures, and abstract paintings are currently on display through December 7, 2023. The gallery is open to the public between the hours of 9am to 8pm. Please check in with the concierge upon arrival. Parking is available on site.

The Seven Palettes are: Sara Becker, Nancy Butler, Caroline Orrick, Ann Rossilli, **Penny Smith**, Kathy Stowe, and Maureen Ward.



“Up in the Air” by Sally Davies
On Display: **October 1 – November 30**
Greenbelt Arts Center

We congratulate Sally Davies on her latest solo show *Up in the Air* on display October 1 - November 30 at the Greenbelt Arts Center (123 Centerway, Greenbelt, MD.)

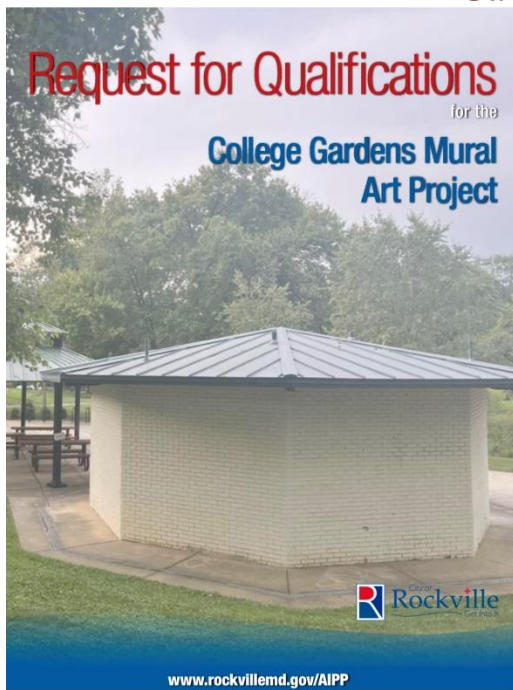
Her exquisite exhibit includes dancers, birds in flight, mythical pixies, and fairies – dancing in the air. All the paintings are created with translucent papers which add to the magical feel of the imagery. The painting titles are derived from Shakespeare quotes, lines from songs, or ballet names – which seems fitting for a theatre lobby! How many titles will you recognize the source?

The exhibit will be up through November 30, but the gallery is only open when shows are on, or box office is open (1 hour before each performance).

Here is the link for the show: <https://www.greenbeltartscenter.org/lobby-gallery-sally-davies/>



City of Rockville Art in Public Places Request for Qualifications for College Gardens Mural Art Project



About College Gardens Project/Vision

Located less than 15 miles northwest of Washington, D.C., Rockville is considered one of the nation's leading small cities and is frequently recognized as one of the best places to live in the nation. Our community is one of the most diverse and international in the world, with more than one-third of our residents born outside the United States. Rockville has a rich history and was the first municipality in Montgomery County, Maryland to initiate a percent for public art program. In 1754, Richard Anderson relocated from Charles County to this area and, in 1757, purchased about 400 acres on the Sinequa Trail (now, Frederick Road or Rt. 355). He cleared the land and began farming it. The land where College Gardens is now remained with the Anderson family for more than 200 years, until its sale by Thomas M. Anderson Sr. (1902-1980) and his sons to the Pollenger Corporation in the early 1960s. The crossroad that became Rockville developed just south of the farm and over the succeeding years Anderson family members served Rockville in many prominent ways. The Maryland State Arts Council's Land Acknowledgement Project Overview and Resource Guide has more information on the Piscataway Indian Nation, which has maintained a relationship with the lands in Rockville. College Gardens Park is a 6.2-acre park with a pond, basketball courts, gazebo, park shelter, picnic tables, playground, and multiuse field. To reflect its vibrant residents and community, Rockville is transforming the external appearance of select buildings through a series of painted murals. As a part of that project, the city is searching for a professional public artist to create a site-specific mural and engage members of the community and user groups to provide input on the development and design of the artwork.

Location of Artwork

615 College Pkwy, Rockville, Md 20850

The location for the mural includes three walls on the exterior façade of the College Gardens Park Picnic Shelter. The facade dimensions are as follows (dimensions are approximate): Wall 1 (left): 8' 11" high x 10' long Wall 2 (center): 8' 11" high x 10' 5" long Wall 3 (right): 8' 11" high x 10' 2" long.

About College Gardens Park Project

The College Gardens Park picnic shelter project aims to create a vibrant mural and robust community engagement by seeking design ideas from local artists. The selected artist will work collaboratively with the community to create a design that reflects the essence of College Gardens Park and the surrounding neighborhood. This mural project is an excellent opportunity to showcase the talent and creativity of local artists while fostering community engagement and pride. This project seeks to:

- Add color and vibrancy to the picnic shelter at the College Gardens Park,
- Grow the City of Rockville's collection of murals on display,
- Create an artwork that reflects the park and surrounding community,
- Showcase the talent and creativity of local/regional artists,
- Foster community and spark a sense of pride in place.

The City of Rockville began surveying the community about this project in September. Survey participants responded most favorably to possible themes incorporating the environment, sustainability, landscapes, and nature. Other themes for consideration include artworks that create a vibrant sense of place by:

- Leveraging the flora and fauna within the park as a source of inspiration,
- Drawing upon the history of the land, its people, the community, and their identity,
- Examining the uses and activity within the park,
- Fostering contemplation, sparking inquiry, and encouraging curiosity.

This request for qualifications is open to artists living in Maryland, Virginia, and Washington, D.C.

Budget

The all-inclusive budget is \$12,500. These funds must cover design work, engineering, fabrication, delivery, site preparation, lighting, installation, as well as other associated expenses including liability insurance, worker's compensation insurance, all necessary travel, and the artist's fee.

Selection Process

1. Artist submits materials for consideration.
2. The Artist Nomination Committee reviews proposals and identifies up to three finalists. The committee may be composed of up to six selected representatives from some of the following groups: City of Rockville Cultural Arts Commission; City of Rockville Recreation and Parks Advisory Board; City of Rockville Human Rights Commission, neighborhood groups, park user groups and/or civic associations.

3. Finalists will be provided with more detailed information on the project and a \$500 honorarium to develop a site-specific proposal.
4. Site-specific proposals are presented to the Artist Nomination Committee.
5. The Artist Nomination Committee reviews proposals and recommends the selection of one artist.
6. The City of Rockville's Cultural Arts Commission is presented with the recommended site-specific proposal and makes an independent recommendation.
7. Recommendations from the Artist Nomination Committee and the Cultural Arts Commission may be presented to the City of Rockville Mayor and Council for consideration and final award of the public art commission.
8. Selected artist is contracted through the City of Rockville.

NOTES:

1. The City of Rockville reserves the right to accept or reject any or all proposals for any or no reason and is under no obligation to commission a work of art. Themes Eligibility Goals Selection Process.
2. Artists may be asked to present their work to the Artist Nomination Committee, the Cultural Arts Commission, city staff and/or Mayor and Council.
3. Artists will be encouraged and expected to engage with the community throughout the development, design, and implementation of this project. • Suitable for public viewing by all ages. • Selected materials must be reviewed and approved by the City of Rockville. • Materials and methods must prioritize durability, ease of maintenance, and safety.

Dec. 18, 2023 Submission Deadline

Mid-January 2024 Finalists Notified

January/February 2024. Community Presentations/Engagement

Feb. 12, 2024. Final Designs and Materials Due

March 2024. Finalist Selected and Notified

April/May 2024. Project Development and Planning

May 2024. Project Installation

The City of Rockville reserves the right to adjust this timetable as required during the development and selection process. All materials will be submitted online (please follow instructions below). Hand-delivered, mailed, or emailed submissions will NOT be accepted. Only online submissions will be considered for review. Find details and application at <https://arclg.is/e5i11>.

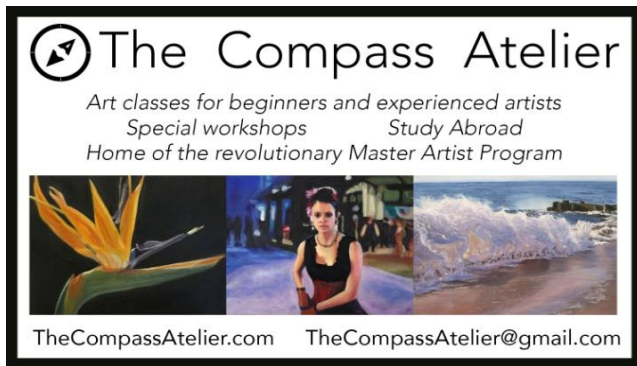
Artists MUST submit the following materials to be considered: - Images. Submit up to 10 images of past work, - Short Application Form, - Work Sample Index. List title, media, location, year created, and budget for each artwork, - Bio/CV, - Artist Statement. Include brief information on artistic practice, key themes, and past community engagement, - Public Art Experience. Include a list of up to three recent public art commissions with reference/contact information for each project. All artists interested in being considered for the project must apply through the electronic address provided above. Submissions must be received by 11:59 p.m. EST on Monday, Dec. 18, 2023. For more information, contact Arts, Culture, and History Program Manager Karyn Miller at kmiller@rockvillemd.gov

Discount on Custom Framing


Jae Shin has been working as a professional picture framer for 2 decades at the Framers' Workroom located in Tenleytown, DC. Jae offers 15% off on custom framing jobs for RAL members. Please feel free to contact Jae for any framing jobs. Framers' Workroom, 4431 Wisconsin Ave., NW, Washington DC 20016

202-363-1970. Store hours: Mon-Sat 10:00-5:30. www.FramersWorkroomDC.com


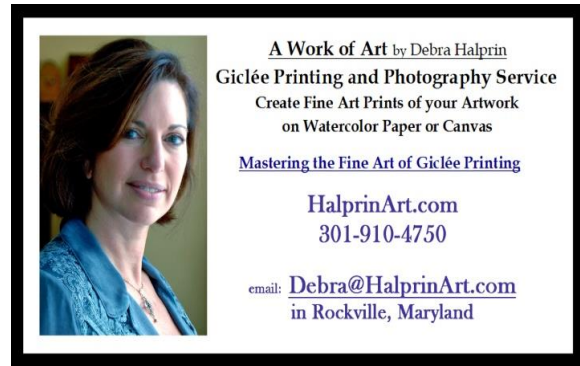
Email: Jaeshin@FramersWorkroomDC.com



The Compass Atelier
Art classes for beginners and experienced artists
Special workshops Study Abroad
Home of the revolutionary Master Artist Program



TheCompassAtelier.com TheCompassAtelier@gmail.com



A Work of Art by Debra Halprin
Giclée Printing and Photography Service
Create Fine Art Prints of your Artwork
on Watercolor Paper or Canvas
Mastering the Fine Art of Giclée Printing

HalprinArt.com
301-910-4750

email: Debra@HalprinArt.com
in Rockville, Maryland

NEWSLETTER SUBMISSIONS

Is your art included in a show? Have other news you wish to share with RAL members? Please send your submissions by the **15th** of each month for inclusion in the next newsletter, to: newsletter@rockvilleartleague.org

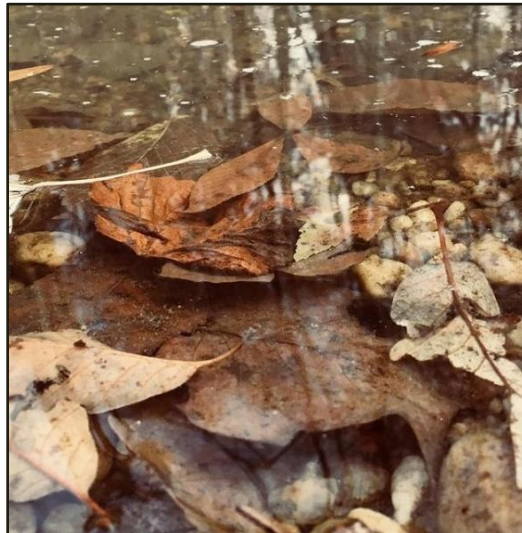
GLENVIEW MANSION SHOWS

Glenview Mansion Schedule				
2023 - 2024				
Exhibition Dates:	ARTISTS	Delivery of Artwork 10am-1pm	<i>Meet the Artists</i> Opening Event	Pick-up Artwork 10am-1pm
OCT.15- NOV.22	Glenview Exhibit <i>Fairweather Artists</i>	Monday, October 9 10:00am- 1:00pm	Sunday, October 15 1:30-3:30pm	TUESDAY, Nov. 28 10:00am-1:00pm
OEC 3 – JAN. 12	RAL Juried Members’ Winter Show	TUESDAY, Nov. 28 10:00 – 1:00pm	Sunday, Dec. 3 1:30-3:30pm	TUESDAY, Jan. 16 10:00am-1:00pm
JAN 21 – FEB 16	Rockville Student Art Show and <i>RAL Portraits: Creatures Great or Small</i>	TUESDAY, Jan. 16 10:00am- 1:00pm	Sunday, Jan. 21 1:30-3:30pm	TUESDAY, Feb. 20 10:00am-1:00pm

Artists displaying work at Glenview will be contacted with detailed information about their shows, including the required show agreement. Labels and support to hang the show will be provided. The RAL shows are virtual on our website as well as in person at Glenview.

Meet the Artists events are free and open to the public. Plenty of parking and there is an elevator to all levels of the gallery. The gallery is open weekdays Monday-Friday, 9am-4:30pm. Closed on official city holidays. Please check Glenview Mansion website before visiting.

Thank you for supporting the arts and your fellow artists!



RAL BOARD OF DIRECTORS

Name	Position	E-mail
Patrick Sieg	<i>President</i>	president@rockvilleartleague.org
Vacant	<i>President Elect</i>	president@rockvilleartleague.org
Lisa Sieg	<i>Vice President/ Exhibits Coordinator</i>	jshows@rockvilleartleague.org
Richard Fisher Sarah Sohraby	<i>Program Coordinators</i>	programs@rockvilleartleague.org
Lisa Sieg	<i>Volunteer Coordinator</i>	volunteer@rockvilleartleague.org
Vacant	<i>Membership Coordinator</i>	membership@rockvilleartleague.org
Rob Gale	<i>Treasurer</i>	treasurer@rockvilleartleague.org
Cathy McDermott	<i>Secretary</i>	secretary@rockvilleartleague.org
Susan Dunnell	<i>Newsletter Editor</i>	newsletter@rockvilleartleague.org
Liliane Blom	<i>Liaison Officer</i>	liaison@rockvilleartleague.org
Dave Allen	<i>Publicity/marketing</i>	publicity@rockvilleartleague.org
Helen Wood	<i>Communications</i>	communications@rockvilleartleague.org
Vacant	<i>Hospitality</i>	hospitality@rockvilleartleague.org
Diane Jeang	<i>Member Shows</i>	mshows@rockvilleartleague.org
Michael Auger	<i>Webmaster</i>	webmaster@rockvilleartleague.org
Eileen Mader	<i>Founder</i>	

Rockville Art League
P.O. Box 4026
Rockville, MD 20850

