



RockvilleArtLeague.org Vol. XXXIII No. 3 November 2023

Next Meeting: Thursday, November 2, 7PM
A Journey of Art and Healing with Mariana Kastrinakis

Message from the President, Patrick Sieg

Dear Rockville Art League Artists,

Do you sometimes feel conflicted about fall?

The slower and sultry summer season seems like ancient history.

There are fewer hours of sunlight so we must cram all those things we really must do into shorter days. The holidays are coming and soon the cold weather will also arrive.

What about those goals that we promised to achieve in 2023? (And I'm not talking about "New Year Resolutions" as those were abandoned last February.)

Isn't November 1 the deadline for the Juried Members' Winter Show? Yikes.

There is so much urgency in the air.

Take a breath and perhaps have a needed "fall break."

Autumn is a special time and there is a freshness in the air that we have been missing since last May. It is invigorating.

Autumn light is so clear and crisp and please feast yourself on the vibrant colors surrounding us.

I'm not feeling at all conflicted just now now...simply grateful for all that this season has to offer.

"The heart of autumn must have broken here and poured its treasure upon its leaves." Charlotte Bronte.

There is a beautiful exhibit on display in Glenview Mansion's art gallery.

All members included in the Fairweather Artists exhibit are RAL artists and their "Meet the Artists" event was on Sunday, October 15.

We had a very nice turnout and the art appreciators in attendance were not disappointed. Rather they were overcome by the beauty on display.

Please make time to see this show (or see it again) and I promise you will be glad you did.

As noted above, the deadline for our Juried Members' Winter Show 2023 is on November 1, 2023.

Please enter your best work and keep your fingers crossed as our judge Palden Hamilton works through what promises to be a substantial number of entries and an impressive body of work.

Our juried shows are competitive and very beautiful and please remember that the only artist who has never been juried out of a show is the artist who does not enter juried shows.

Lisa Sieg, RAL's V.P. and Juried Show Lead, has shared the show call and please see it later in this newsletter. Please read the instructions carefully.

It is clearly and concisely laid out with important details about entering and a list of relevant dates. Lisa wants you to have the strongest chance for inclusion and that starts with understanding the exhibit's requirements. And let Lisa or me know if you have questions ahead of the deadline.

Your link and password for entering have been shared with all new and renewing members. And we hope you have renewed and will enter this much anticipated show.

We welcomed Katie Carey from Artwork Archive as our October speaker. Artwork Archive is the company we use to manage our exhibits from maintaining artist contacts to facilitating the entry of work in our shows. The system is vital to the eventual display of the work in person (QR code labels) and virtually. She shared much useful information about their product not only for organizations like RAL but also for individual artists and their own, unique practices.

Her talk was recorded, and I invite you to check it out. It was mailed out to members, and it is posted to RAL's YouTube selections.

Our next speaker will be artist and physician Mariana Kastrinakis. She will share a bit on her journey from internist to artist and how she sees, creates, and shares beauty in her artwork.

I have known and admired Mariana for many years and I am much looking forward to her presentation.

You have likely noticed that we are trying a different format for our newsletter this month.

Susan Dunnell does a fantastic job composing the newsletter each and every month (thank you much).

She is testing a new look that may give viewers using "devices" an easier and better viewing experience.

Thank you, again, Susan.

And many thanks to all the members of the Rockville Art League for loving art. Our world needs as many artists as possible these days and always.

I hope you have time to enjoy some outdoor autumn time and perhaps capture some of the season's beauty and light.

Sincerely,
Patrick Sieg
President,
The Rockville Art League

Rockville Art League Fall 2023 Speaker Series

These programs will be on Zoom. Zoom invitations will be sent out to members a few days prior to the presentations and we plan to record them.

Thursday, September 14

Art Historian Dr. Irina Stotland on *The Secrets of Johannes Vermeer*

Dr. Irina Stotland offered this intriguing discussion about his life, his techniques, and insights into his exquisite paintings. If you were unable to attend, a recorded zoom was sent out to all members and is also available on RAL's YouTube, found by clicking on the YouTube icon at the bottom of the rockvilleartleague.org website. We thank Helen Wood for helping with this.

Thursday, October 5, 7:00 PM on Zoom

Navigating Artwork Archive with Katie Carey

Thank you to those who joined us on October 5 to hear Katie Carey present on Artwork Archive, how it applies to our organization for our exhibitions.

She also discussed setting up a private account for artists, from emerging to professionals, and how it can help organize, track, and promote your work. Please listen to the zoom recording that was sent out to all members on Oct. 8 to see if this is right for your practice. Information specific to our ***RAL Juried Members' Winter Show*** was discussed during the last 15 minutes of the meeting.

We thank Katie Carey for her time and sharing her expertise. Artwork Archive has offered RAL members a discount code for 30% off the first year for those who are interested in setting up their own private artist account: www.artworkarchive.com/ral



Thursday, November 2, 7:00 PM on Zoom

Art Educator and Mixed Media Artist Mariana Kastrinakis on *A Journey of Art and Healing*

Please plan to join us to hear Mariana Kastrinakis discuss her artist path which combines learning, healing, and creating art.

Mariana Kastrinakis first explored watercolors during a break from her work as a physician in the DC area. Since then, her art has expanded to include acrylics, collage, and oil painting in a mixed media approach. Self-trained, through a vast combination of courses, videos, workshops, and artistic residencies, she sees herself as a permanent student of art. In addition, she views art making as a healing human endeavor that is open to all.



Her award-winning artwork, exhibited nationally and internationally, reflects her perceptions of the unique dance created by light as it falls onto textures, shapes, and patterns in our natural and man-made environments. She expresses those perceptions in a semi-abstract style, aiming to evoke and combine viewers' own visual imagery with hers, thus inviting all to compose with her.

A mixed media artist often using mono-prints and intaglio work, she also paints in oils and cold wax. She likes to say that she has not yet encountered an art medium that she would not want to learn. Her love of art mixes with her science background guiding her to explore and research scientific compositions of the mediums she uses, to become a better consumer and art teacher.

Mariana Kastrinakis has taught drawing, painting, and printing (without a press) in Montgomery County and at her current studio in the Stone Tower of the Glen Echo Park, where she shares the studio with noted artist J. Jordan Bruns. She and Bruns recently founded an innovative arts instruction program called *Art Clinic* offering individualized classes to help emerging artists reach their goals, and an online FREE program (the **Art Clinics Online**, or *ACO*) to interview and connect artists in the area.

Her work is included in collections in Maryland, DC, Virginia, New York, Massachusetts and abroad, and can be seen in her studio in Glen Echo and in her other studio in upstate NY (on Keuka Lake, in upstate NY). For more information visit: www.kastrinakisart.com

RAL Membership

Our membership year runs from **September 1, 2023, to August 31, 2024**. Thank you to the many of you that have already renewed and if you haven't yet, there's still time. **If you are uncertain** of your *membership status*, please ask.

Your membership allows for *members only* exhibition opportunities, presentations and networking, and other benefits that can help you grow as an artist. We have 6 meetings a year, currently on zoom with excellent speakers, discussions, and demos.

Please visit the website <http://rockvilleartleague.org> and click on the word *Membership* to see a list of membership benefits.

We kicked off our programs for the year on September 14, with a presentation *The Secrets of Johannes Vermeer* by art historian Dr. Irina Stotland, followed by *Navigating Artwork Archive* with Katie Carey discussing RAL's organizational account as well as what a personal account would look like to organize your art practice.

Recordings of presentations are sent out to members a few days afterwards, and several have been posted to RAL's YouTube page which can easily be accessed by clicking on the YouTube icon at the bottom of the Rockville Art League website page. We thank Helen Wood for all her work on this.

To enter our shows, members need to be current on their membership. *Members in good standing* are sent their personal link and password to enter the shows for the year. If you have renewed and haven't received yours, please contact Patrick Sieg president@rockvilleartleague.org

Membership is \$40 for the entire year.

You can easily renew on the RAL website through *PayPal*.

Or, if you prefer to pay by check, please make it payable to **Rockville Art League** and mail to:

Rockville Art League
c/o Rob Gale
108 W. Argyle St.
Rockville, MD 20850

Thank you to those who have already renewed, and a warm welcome to new members!

RAL Juried Members' Winter Show

DECEMBER 3, 2023 – JANUARY 12, 2024
Glenview Mansion Art Gallery

Call for entries: OCTOBER 1 – NOVEMBER 1.
Online submissions only.

Judge: We are honored that Palden Hamilton will judge our Juried Members' Winter Show.

Palden Hamilton is an artist and art educator working in Maryland. Encouraged from an early age to pursue art by his parents and his great aunt, the abstract expressionist Elaine Hamilton O'Neal (1920-2010), he attended the Gilman School, where he studied under Betsey Heuisler. He received his BFA from The School of the Art Institute of Chicago in 2002 and continued his education at the Art Students League of New York, and studied under Ron Sherr, Harvey Dinnerstein, and Mary Beth Mckenzie. There he was awarded a *Merit Award in Realism* and the Phylis T. Mason Grant.

Hamilton has done a range of commissioned portrait work since returning to his hometown of Baltimore. In 2008, 2017, and 2018, he was awarded *Certificates of Excellence* from the Portrait Society of America for placing in the top 30 entries in their international portrait competition.

Hamilton has painted landscape extensively on location in his native Maryland, and on travels to his mother's homeland, the Himalayan kingdom of Sikkim. As a landscape artist, he has participated in and received honors from Plein Air Easton, Olmsted Plein Air Invitational, Wayne Plein Air, Solomons Plein Air, and Cape Ann Plein Air.

His work was most recently featured in "The Oil Painter's Color Handbook" (Monacelli Press, 2022), Fine Art Connoisseur Magazine's "Five to Watch" in 2020, and Plein Air Magazine's "11 Rising Stars to Add to Your Collection" in 2019.

Hamilton has been an art instructor for over ten years, teaching at the Maryland Institute College of Art (MICA), the Zoll Studio School of Fine Art, Chesapeake Fine Art Studio, and others. For more information, visit: <http://www.paldenhamilton.com>

On Exhibit: This juried show will be on display in person **December 3 through January 12** at Glenview Mansion Art Gallery (603 Edmonston Dr./Rockville) with the virtual show available on our website. Palden Hamilton will award prizes on **Sunday, Dec. 3, 2:00pm at Glenview.**

Please *read all the information below* carefully.

Call Deadline: *Members in good standing* may submit up to **two (2) pieces** of work to be considered by the judge for inclusion in this show **beginning October 1** through **WEDNESDAY, November 1**. No submissions will be accepted after the deadline.

If your work is accepted into this show, you will be informed **by Friday, Nov. 10** with delivery of artwork is on **Tuesday, Nov. 28**. Please note that the amount of time to frame your work is brief, especially with the Thanksgiving holiday.

Entry Fee: A flat \$10 show fee will be collected **from artists that have their work accepted into this show** (not per piece).

IMPORTANT! By submitting work into this show, *you are agreeing to the terms* of the **Show Agreement** listed here:

“I agree to the rules of the show as presented in this show call and the schedule below, that my entries are my original works and have not been accepted into a previous **Rockville Art League Juried Members’ Show**. I will not hold the Rockville Art League (RAL), Glenview Mansion, or the City of Rockville responsible for any possible loss or damage to my entries. As with any show, I understand that all reasonable care will be taken in the handling of my artwork. I give RAL, Glenview Mansion, and the City of Rockville permission to use images of my artwork and publish them as appropriate. I acknowledge a commitment to donate 20% of the sale price of my work, if sold during this show at Glenview to the City of Rockville.”

Eligibility and rules: The following rules apply for all works entered.

- Each *member in good standing* may enter *up to two (2) pieces by the deadline*.
- **How to enter:** submit your entries using your **PERSONAL LINK and PASSWORD** that WILL be emailed to you *by the end of September*. Entries of *up to 2 pieces per artist for consideration* by the judge may be submitted by **Wednesday, November 1**.
- **For each submission**, you will be required to include: the **title, medium, dimensions** (note: depth is for sculpture only) and **market price** (NOT wholesale price!) (If Not for Sale, please leave blank and you will be contacted to confirm this) and **submit an image** (jpeg or jpg.) of your piece. The mat or the frame (or glass, glare, wall, furniture etc.) should NOT be visible in the image you submit. Just the artwork itself.
- **If your work is accepted into this show:** a \$10 show fee per artist (not per piece) will be collected at that time.
- RAL retains the right to determine suitability of work for entry in this show.

Artwork requirements: If your work is accepted into this show, *each 2-D piece must be ready for hanging*, gallery-wrapped or framed or professionally finished, **securely wired** by Nov. 28.

- The maximum measurement of any framed side is **48 inches**.
- Only **original** works **framed securely with hanging wire** are acceptable. (NO sawtooth hangers or such.) If submitting unframed canvas, edges should be painted or finished.
- **NO WET PAINT** is allowed.
- The **entries may NOT have been exhibited** previously in a **RAL Juried Members’ Show**.
- All artists are encouraged to sign their work on either the front or back.
- Entries not meeting the show conditions will not be accepted.
- All work must remain up until the end of the show.
- **Sales:** If any work sells while on display at Glenview, the artist agrees to donate 20% of the sales price to the City of Rockville as specified in the **Show Agreement** above.

Categories of Artwork Include:

- Oils and acrylics
- Watercolors
- Pastels, drawings, and hand-pulled prints
- Mixed media, collage, experimental, and original computer-generated art
- Photographs
- Sculpture and ceramics

Awards:

- Best in Show (cash prize)
- First, Second, Third in all categories (cash prizes)
- Honorable Mention at Judge's Discretion

Schedule:

- **October 1 - November 1 - you may enter up to two (2) pieces for consideration** online using the link that will be sent to you by the end of Sept. Up to two (2) pieces per artist.
- **Wednesday, November 1 – Deadline for submissions**
- **Friday, November 10** – notifications of acceptance sent out to all members by this date.
- **TUESDAY, November 28**– *delivery of accepted artwork* at Glenview, **10:00am-1:00pm**; if your work is accepted into this show, you or your designee must deliver your work during this time. The judge will award prizes based on an in-person view.
- **Sunday, December 3, 1:30-3:30pm, Meet the Artists Opening** at Glenview Mansion. Palden Hamilton will **award prizes at 2:00pm** with remarks about the work. He will also be available throughout the afternoon to talk with artists.
- **Week of Dec. 4:** A zoom video of the judge discussing his awards choices will be sent out to all members.
- **TUESDAY, January 16 - pick up artwork** 10:00am-1:00pm. You or your designee must pick up your work on this date.

Please note: *Members in good standing** will have their personal link and password emailed to them the last week of September. **PLEASE SAVE IT.** It will be the same one you use to enter all RAL shows this year.

**If you paid your dues for Sept. 1, 2023 – Aug. 31, 2024, you are a member in good standing. PLEASE: if you are unsure of your membership status, ask us!*

You will use your personal link/password that will be sent to you at the end of September to enter your work in the show. Be sure to type in the information specified in this note carefully and clearly.

This information will be used to contact you and to create the virtual show and the labels.

Note: When you submit work, *if you entered artwork in the past several RAL Shows*, you may see the images of those pieces. They are marked appropriately for those shows within the system.

If you need help, **please ask ahead of the deadline!**

You may enter work for this show October 1 through November 1.

Deadline for all entries is **Wednesday, November 1.**

Notifications of acceptance will be sent out to all members **by November 10.** This call for entries will also be posted on the Rockville Art League website and emailed out at the end of September as well.

Questions regarding the show? Need help or support with the entry process?

Please contact:

Lisa Sieg: jshows@rockvilleartleague.org

Patrick Sieg: president@rockvilleartleague.org

Virtual Shows, Sales, and Inquiries

Did you know that you can access past RAL virtual shows? Virtual shows are updated and posted to the Rockville Art League website by webmaster Michael Auger.

Several of our recent shows are still viewable.

How to access a past virtual show:

Go to <http://rockvilleartleague.org> and click on the white button for the current virtual show. If you haven't visited the RAL page for a while you may need to hit refresh. Currently, the new *Fairweather Artists* Show is posted there.

Once you open the current virtual show, click on the word "**Exhibition**" and you will see the show cards from prior shows. Find the show card of the one you would like to view and click on the name of the show (ex: *Times5*, *Essence of Summer*, *RAL Juried Members' Spring Show*, etc.) right below the card and you can view that show. You can view it altogether by "**Artwork**" or, if you prefer to see it by specific artist, click on the word "**Artist**".

On occasion we receive inquiries about work still viewable through our virtual shows. Any inquiries or purchase requests are forwarded to our artists.

Purchase Requests or Inquiries about the current show at Glenview:

If you are in the gallery at Glenview and you are interested in a piece, click on the **QR code** found right on the label below the work. Instructions are also found in the various rooms of the gallery. It's easy. Just **aim your smartphone at the QR code** and **click on the link** that appears and it will take you to the piece. Once there you will see the artwork, the medium, dimensions and, if the piece is available, the price. You can click on "Inquire" or "Purchase" if you are interested further. We forward all inquiries or purchase requests to the artist.

If you are at Glenview and forgot your phone or just can't quite figure out a QR code, no worries. Either take a picture of the label or write down the name of the piece and contact either Lisa Sieg (jshows@rockvilleartleague.org) or Patrick Sieg (president@rockvilleartleague.org). Or go to the RAL website and look for us under contacts.

These shows are beautiful thanks to our talented members.

Glenview Mansion Art Gallery Upcoming Exhibits

Glenview Mansion Art Gallery is open weekdays, Monday – Friday, 9:00am-4:30pm. Please check the Glenview Mansion website before coming out or call 240-314-8681. Plenty of parking and there is an elevator to all levels of the gallery. It is quiet and uncrowded during the week. The *Meet the Artists* events are free and open to the public. Thank you for supporting the arts and your fellow artists.

Exhibitions for 2023

Times5: September 10 – October 6

Congratulations to artists/teachers Mygenet Harris, Dustine Hayes, Michael Metzner, Tom Ruttkay, and Jane Walsh on their *Times5* Exhibit at Glenview Mansion. It was an amazing show, full of creative energy well received by so many in our community. We are delighted to have them as new RAL members too. The *Times5* virtual show is still viewable on our website by clicking on the button under the word “Exhibitions”. Once on that page, click on the word “Exhibitions” on the left and *select the show* you would like to view *by show card*.

On Exhibit
Oct. 15-Nov. 22

Glenview Mansion Art Gallery

AT ROCKVILLE CIVIC CENTER PARK

Fairweather Artists

From top to bottom and left to right:
Green Circle Blooms by Stacy Yochum
In the Green by Susan Sinclair Galego
Dr. Suess Lives Here by Ingrid Matuszewski
Under the Lily Pads by Patrick Sieg

The poster features four artworks: 'Green Circle Blooms' (two vases with colorful flowers), 'In the Green' (a landscape with a tree and a person), 'Dr. Suess Lives Here' (a colorful abstract scene with a house), and 'Under the Lily Pads' (a pond with lily pads and flowers).

On Exhibit: Oct. 15-Nov. 22

Fairweather Artists

Meet the artists from

1:30-3:30 p.m. Sunday, Oct. 15.

These 11 Fairweather Artists, Nancy Arons, Ellen Broadman, Sarah Clayton Davis, Karen Kuell Epstein, Susan Sinclair Galego, Lee Ann Howdershell, Jennifer Howard, Ingrid Matuszewski, Lisa Sieg, Patrick Sieg and Stacy Yochum, have created an extraordinary multimedia show of beautiful vistas, vignettes and subjects.

For information, call 240-314-8681 or 240-314-8660.

For recorded directions, call 240-314-5004.

Glenview Mansion Art Gallery is wheelchair accessible.

Gallery Hours: Monday-Friday, 9 a.m.-4:30 p.m.; gallery is closed on official city holidays.



**Glenview Mansion
Art Gallery**
at Rockville Civic Center Park
603 Edmonston Drive
Rockville, MD 20851



Fairweather Artists: October 15 – November 22

Members of ***Fairweather Artists***, Nancy Arons, Ellen Broadman, Sarah Clayton Davis, Karen Kuell Epstein, Susan Sinclair Galego, Lee Ann Howdershell, Jennifer Howard, Ingrid Matuszewski, Lisa Sieg, Patrick Sieg, and Stacy Yochum with work in oils and acrylics, gouache, collage, and photography present an extraordinary show of beautiful vistas, vignettes, and subjects. The exhibit opened **on Sunday, October 15, 1:30 to 3:30 pm**. Thank you to everyone who attended. For a more art focused view of the show, come to the gallery during the week.



Rockville Art League Juried Members' Winter Show: December 3 – January 12

Juried by Palden Hamilton. Please see the *call for entries* in this newsletter. This is one of our semi-annual large, juried member shows, with one in the winter and another in the spring. Members may enter up to two (2) pieces of your best work to be considered by the judge. This is not a themed show; the word winter just indicates the time of year. Deadline for all entries is November 1.

Upcoming: Portraits: Creatures Great or Small: January - Feb. 2024

All details **coming soon** with specific entry submission dates, schedule, etc., to be sent out to all members. This show will follow the *RAL Juried Members' Winter Show* and will be in conjunction with the **2024 Rockville Student Art Show**. Depending on the number of pieces accepted in that show will determine how many pieces we can accommodate for this themed show.

This show is sponsored by the City of Rockville Arts Division and the Rockville Art League.

Here's a brief overview: Rockville Art League *members in good standing* will be invited to submit original works of *up to three (3) pieces of art for consideration* for the show **Portraits: Creatures Great or Small** to be exhibited at Glenview Mansion.

From man's best friend to a person of interest. A beloved friend or family member, a personable pet, a neighbor, a passerby, a frequent visitor to your yard or park - a bird, deer, or fox - or even the one you see daily in the mirror or in your art class. Perhaps one that is endearing, beautiful, whimsical, that has a story to tell.

We will be looking for your *original portrayals* of these special creatures in your life to fill the gallery at Glenview in January. The work for this show may have been exhibited in a prior show and acceptance into this show does not preclude its entry in a future show. More details to come.

MEMBER NEWS



Freddi Weiner, Photos by Freddi, can be found on exhibit in a solo show at the Olney Library, now through October 25th. You can find 16 of Freddi's nature and landscape themed photographs on

display in the library gallery. The Olney Library is located at 3500 Olney- Laytonsville Road in Olney, MD and is open daily. starting at 10:00 am. The exhibit is by the Olney Art Association.



Freddi Weiner was accepted into the juried exhibit “Our Creative Community” at the Sandy Spring Museum with her acrylic painting, “Sunflower Duo.” The exhibit showcases Maryland artists working in a wide variety of media, celebrating regional talent and collective experiences.

The exhibit was juried by Roberta Staat, a nationally recognized, award winning plain air painter. The exhibit will be in three galleries and runs September 22-November 15, 2023. There will be an opening reception on **October 1** from 1-3. Sandy Spring Museum is located at 17901 Bentley Road, Sandy Spring, MD. For more information www.sandyspringmuseum.org



Caroline Orrick



Ann Rossilli



Penny Smith



Kathy Stowe



Sara Becker



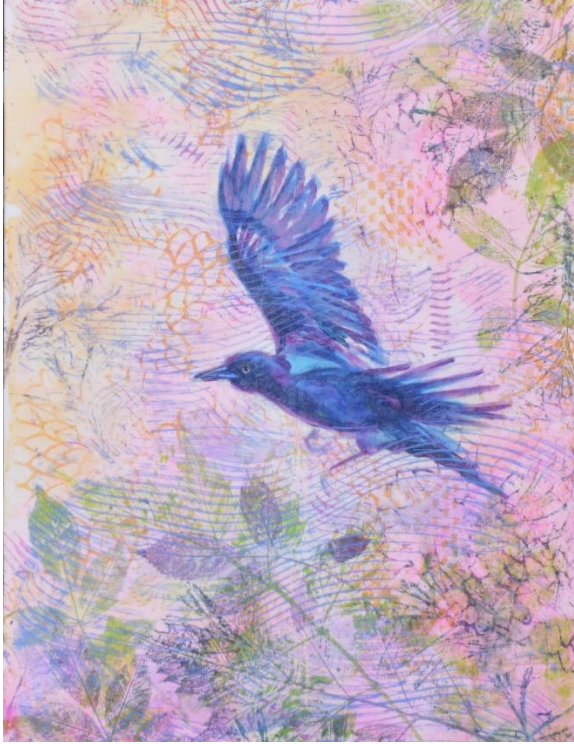
Maureen Ward



Nancy Butler

“The Seven Palettes” celebrate ten years of being together with an exhibit at Maplewood Park Place at 9707 Old Georgetown Road, Bethesda Maryland 20814. A selection of landscapes, still life, figures, and abstract paintings are currently on display through December 7, 2023. The gallery is open to the public between the hours of 9am to 8pm. Please check in with the concierge upon arrival. Parking is available on site.

The Seven Palettes are: Sara Becker, Nancy Butler, Caroline Orrick, Ann Rossilli, **Penny Smith**, Kathy Stowe, and Maureen Ward.



“Up in the Air” by Sally Davies
On Display: **October 1 – November 30**
Greenbelt Arts Center

We congratulate Sally Davies on her latest solo show *Up in the Air* on display October 1 - November 30 at the Greenbelt Arts Center (123 Centerway, Greenbelt, MD.)

Her exquisite exhibit includes dancers, birds in flight, mythical pixies, and fairies – dancing in the air. All the paintings are created with translucent papers which add to the magical feel of the imagery. The painting titles are derived from Shakespeare quotes, lines from songs, or ballet names – which seems fitting for a theatre lobby! How many titles will you recognize the source?

The exhibit will be up through November 30, but the gallery is only open when shows are on, or box office is open (1 hour before each performance).

Here is the link for the show: <https://www.greenbeltartscenter.org/lobby-gallery-sally-davies/>







Cindy Rivarde's artwork, "Gathering," is included in a show, "Painted: Contemporary Realism in Maryland," at the Hamilton Gallery, 5502 Harford Road, Baltimore, MD 21214, through October 29. The curator is Grace Doyle. Gallery Hours: Friday 1-5, Saturday 9-5, and Sunday 11-3.


Discount on Custom Framing

Jae Shin has been working as a professional picture framer for 2 decades at the Framers' Workroom located in Tenleytown, DC. Jae offers 15% off on custom framing jobs for RAL members. Please feel free to contact Jae for any framing jobs. Framers' Workroom, 4431 Wisconsin Ave., NW, Washington DC 20016
202-363-1970. Store hours: Mon-Sat 10:00-5:30. www.FramersWorkroomDC.com
Email: Jaeshin@FramersWorkroomDC.com

 **The Compass Atelier**
*Art classes for beginners and experienced artists
Special workshops Study Abroad
Home of the revolutionary Master Artist Program*



TheCompassAtelier.com TheCompassAtelier@gmail.com



A Work of Art by Debra Halprin
Giclée Printing and Photography Service
Create Fine Art Prints of your Artwork
on Watercolor Paper or Canvas
Mastering the Fine Art of Giclée Printing

HalprinArt.com
301-910-4750

email: Debra@HalprinArt.com
in Rockville, Maryland

NEWSLETTER SUBMISSIONS

Is your art included in a show? Have other news you wish to share with RAL members?
Please send your submissions by the **15th** of each month for inclusion in the next newsletter, to:
newsletter@rockvilleartleague.org



GLENVIEW MANSION SHOWS

Glenview Mansion Schedule				
2023 - 2024				
Exhibition Dates:	ARTISTS	Delivery of Artwork 10am-1pm	<i>Meet the Artists</i> Opening Event	Pick-up Artwork 10am-1pm
OCT.15- NOV.22	Glenview Exhibit <i>Fairweather Artists</i>	Monday, October 9 10:00am- 1:00pm	Sunday, October 15 1:30-3:30pm	TUESDAY, Nov. 28 10:00am-1:00pm
OEC 3 – JAN. 12	RAL Juried Members’ Winter Show	TUESDAY, Nov. 28 10:00 – 1:00pm	Sunday, Dec. 3 1:30-3:30pm	TUESDAY, Jan. 16 10:00am-1:00pm
JAN 21 – FEB 16	Rockville Student Art Show and <i>RAL Portraits: Creatures Great or Small</i>	TUESDAY, Jan. 16 10:00am- 1:00pm	Sunday, Jan. 21 1:30-3:30pm	TUESDAY, Feb. 20 10:00am-1:00pm

Artists displaying work at Glenview will be contacted with detailed information about their shows, including the required show agreement. Labels and support to hang the show will be provided. The RAL shows are virtual on our website as well as in person at Glenview.

Meet the Artists events are free and open to the public. Plenty of parking and there is an elevator to all levels of the gallery. The gallery is open weekdays Monday-Friday, 9am-4:30pm. Closed on official city holidays. Please check Glenview Mansion website before visiting.

Thank you for supporting the arts and your fellow artists!



RAL BOARD OF DIRECTORS

Name	Position	E-mail
Patrick Sieg	<i>President</i>	president@rockvilleartleague.org
Vacant	<i>President Elect</i>	president@rockvilleartleague.org
Lisa Sieg	<i>Vice President/ Exhibits Coordinator</i>	jshows@rockvilleartleague.org
Richard Fisher Sarah Sohraby	<i>Program Coordinators</i>	programs@rockvilleartleague.org
Lisa Sieg	<i>Volunteer Coordinator</i>	volunteer@rockvilleartleague.org
Vacant	<i>Membership Coordinator</i>	membership@rockvilleartleague.org
Rob Gale	<i>Treasurer</i>	treasurer@rockvilleartleague.org
Cathy McDermott	<i>Secretary</i>	secretary@rockvilleartleague.org
Susan Dunnell	<i>Newsletter Editor</i>	newsletter@rockvilleartleague.org
Liliane Blom	<i>Liaison Officer</i>	liaison@rockvilleartleague.org
Dave Allen	<i>Publicity/marketing</i>	publicity@rockvilleartleague.org
Helen Wood	<i>Communications</i>	communications@rockvilleartleague.org
Vacant	<i>Hospitality</i>	hospitality@rockvilleartleague.org
Diane Jeang	<i>Member Shows</i>	mshows@rockvilleartleague.org
Michael Auger	<i>Webmaster</i>	webmaster@rockvilleartleague.org
Eileen Mader	<i>Founder</i>	

Rockville Art League
P.O. Box 4026
Rockville, MD 20850

