



RockvilleArtLeague.org

Vol. XXXIII No. 2

October 2023

**Next Meeting: Thursday, October 5, 7PM**  
*Navigating Artwork Archive with Katie Carey*

## **Message from the President, Patrick Sieg**

Dear Rockville Art League Artists,

Fall is coming and we can feel it in the changing light and cooler temperatures.

Autumn has always brought a boost to my productivity and more importantly, my creativity. It is something about the invigorating air and the season's beautiful colors.

**“You can't use up creativity. The more you use the more you have.”**

— Maya Angelou

Speaking of creativity, please make time to visit the Glenview Mansion Art Gallery and take in the show currently on exhibit, “Times5” ...you will be glad you did.

These five current and former art teachers at Einstein High School (Montgomery County's art magnet school) show an amazing amount of creativity.

As I viewed this show I thought deeply about creativity and where it comes from and how important it is, not only to us as artists but for everyone.

To be creative one needs to escape the mundane expected patterns of life and look at things differently.

I believe that the creative process is one of human's most complex and beautiful elements. Creativity is certainly different for everyone and can be both enjoyable and frustrating. Being creative helps us understand ourselves and the world and, if practiced well, can enhance our lives through beauty.

Creativity needs inspiration and one way to cultivate inspiration is to surround ourselves with a variety of people as well as knowledge, experiences, and resources.

Creativity is to be valued and cultivated.

Our creative juices can flow when we have other artists to bounce daring ideas off and when we nurture a community around inspiration and creative endeavors.

The Rockville Art League is such a community.

**“Creativity is inventing, experimenting, growing, taking risks, breaking rules, making mistakes, and having fun.”**

— Mary Lou Cook

The “Times5” artists, all members of the Rockville Art League, demonstrate that they have creativity to spare and the artistic skills to make their creativity a reality.

We artists have a leg up on creativity and that is so fortunate:

- Our unique perspective is creative gold.
- Bringing the spirit of fun, excitement, and child-like wonder to our work is key to being creative.
- The more we live a life that inspires, the more access we have to creativity.

We were fortunate to hear from Art Historian, Dr. Irina Stotland on September 14th. I admired the art of Vermeer before but now I can add understanding of his life and times to that admiration.

Dr. Stotland has supported RAL by presenting her insights into famous artists each September for the past seven years and I admire that as well. Thank you, Irina, for enabling such a wonderful tradition.

Next month we will hear from a member of the Artwork Archive team from their headquarters in Colorado. I'm much looking forward to that Zoom and have your questions ready.

Our Winter Juried Members Art Show is close on the horizon. Please carefully read the show call later in this newsletter.

Our juror, Palden Hamilton, is a world-renowned artist and one who I have followed for several years. We are so fortunate that he is based here in Maryland and that he is willing to judge our show.

All members who have renewed their membership in RAL will receive their personal link and password and that is needed to enter the winter show (and all other shows this membership year). It will be sent in the last week of September.

Thank you to the many who have already renewed and for others, please consider renewing. Without your continuing support we can't do the things that we do or be such an important part of the local art scene.

Rockville Art League artists, thank you for your creativity, for sharing your artwork and for making our league strong.

Sincerely,  
Patrick Sieg  
President, The Rockville Art League

## Rockville Art League Fall 2023 Speaker Series

These programs will be on Zoom. Zoom invitations will be sent out to members a few days prior to the presentations and we plan to record them.

Thursday, September 14  
**Art Historian Dr. Irina Stotland on “The Secrets of Johannes Vermeer”**

Thank you to everyone who joined in on Thursday evening to hear this fascinating presentation on Johannes Vermeer. A BIG THANK YOU to Dr. Irina Stotland for offering this intriguing discussion about his life, his techniques, and insights into his exquisite paintings. If you were unable to attend, a recorded zoom has been sent out to all members and will be available on RAL's YouTube. We thank Helen Wood for helping with this.

Thursday, October 5, 7:00 PM on Zoom  
*Navigating Artwork Archive with Katie Carey*

Artwork Archive is the service provider Rockville Art League uses to create our shows. It offers a wide variety of features allowing for the collection of submissions, the ability to categorize the entries, and to create the labels, and, an important component, the virtual shows. RAL's storage capacity is 1000 individual artworks. That gives RAL the ability to host more than one of the exhibitions virtually at the same time, which can result in sales from a prior show that does occur on occasion.

Katie Carey from Artwork Archive will give RAL members an overview of the company, share features of Artwork Archive as it applies to RAL as an organization, the exhibitions, and will answer questions. She will also discuss services they offer for individual artists who may want to set up their personal account to keep track of their sales, collectors, and artwork. This may appeal to those who have their work in galleries, and in a variety of shows, both locally and beyond. Please plan to join in on Oct. 5.

Thursday, November 2, 7:00 PM on Zoom

### **Art Educator and Mixed Media**

**Artist Mariana Kastrinakis on “A Journey of Art and Healing”**

## **RAL Membership**

Our membership year runs from **September 1, 2023, to August 31, 2024**. Thank you to the many of you that have already renewed and if you haven't yet, there's still time. **If you are uncertain** of your *membership status*, please ask.

Your membership allows for *members only* exhibition opportunities, presentations and networking, and other benefits that can help you grow as an artist. We have 6 meetings a year, currently on zoom with excellent speakers, discussions, and demos.

Please visit the website <http://rockvilleartleague.org> and click on the word *Membership* to see a list of membership benefits.

We kicked off our programs for the year on Thursday, September 14, with a presentation on Zoom by art historian **Dr. Irina Stotland** who discussed *The Secrets of Johannes Vermeer*. Recordings of presentations are sent out to members a few days afterwards, and several have been posted to RAL's YouTube which can easily be accessed by

clicking on the YouTube icon at the bottom of the Rockville Art League website page. We thank Helen Wood for all her work on this.

### **Membership is \$40 for the entire year.**

You can easily renew on the RAL website through *Paypal*.

Or, if you prefer to pay by check, please make it payable to **Rockville Art League** and mail to:

Rockville Art League  
c/o Rob Gale  
108 W. Argyle St.  
Rockville, MD 20850

Thank you to those who have already renewed, and a warm welcome to new members!

## **RAL Juried Members' Winter Show**

**DECEMBER 3, 2023 –  
JANUARY 12, 2024**  
**Glenview Mansion Art Gallery**

**Call for entries: OCTOBER 1 –  
NOVEMBER 1.**

*Online submissions only.*

**Judge:** We are honored that Palden Hamilton will judge our Juried Members' Winter Show. **Palden Hamilton** is an artist and art educator working in Maryland. Encouraged from an early age to pursue art by his parents and his great aunt, the abstract expressionist Elaine Hamilton O'Neal (1920-2010), he attended the Gilman School, where he studied under Betsey Heuisler. He received his BFA from The School of the Art Institute of Chicago in 2002 and continued his education at the Art Students League of New York, and studied under Ron Sherr, Harvey Dinnerstein, and Mary Beth McKenzie. There he was awarded a *Merit Award in Realism* and the Phylis T. Mason Grant.

Hamilton has done a range of commissioned portrait work since returning to his hometown of Baltimore. In 2008, 2017, and 2018, he was awarded *Certificates of Excellence* from the Portrait Society of America for placing in the top 30 entries in their international portrait competition.

Hamilton has painted landscape extensively on location in his native Maryland, and on travels to his mother's homeland, the Himalayan kingdom of Sikkim. As a landscape artist, he has participated in and received honors from Plein Air Easton, Olmsted Plein Air Invitational, Wayne Plein Air, Solomons Plein Air, and Cape Ann Plein Air.

His work was most recently featured in "The Oil Painter's Color Handbook" (Monacelli Press, 2022), Fine Art Connoisseur Magazine's "Five to Watch" in 2020, and Plein Air Magazine's "11 Rising Stars to Add to Your Collection" in 2019.

Hamilton has been an art instructor for over ten years, teaching at the Maryland Institute College of Art (MICA), the Zoll Studio School of Fine Art, Chesapeake Fine Art Studio, and others. For more information, visit: <http://www.paldenhamilton.com>

**On Exhibit:** This juried show will be on display in person **December 3 through January 12** at Glenview Mansion Art Gallery (603 Edmonston Dr./Rockville) with the virtual show available on our website. Palden Hamilton will award prizes on **Sunday, Dec. 3, 2:00pm at Glenview.**

Please *read all the information below* carefully.

**Call Deadline:** *Members in good standing* may submit up to **two (2) pieces** of work to be considered by the judge for inclusion in this show **beginning October 1** through

**WEDNESDAY, November 1.** No submissions will be accepted after the deadline.

*If your work is accepted into this show*, you will be informed **by Friday, Nov. 10** with delivery of artwork is on **Tuesday, Nov. 28**. Please note that the amount of time to frame your work is brief, especially with the Thanksgiving holiday.

**Entry Fee:** A flat \$10 show fee will be collected **from artists that have their work accepted into this show** (not per piece).

**IMPORTANT!** By submitting work into this show, *you are agreeing to the terms* of the **Show Agreement** listed here:

"I agree to the rules of the show as presented in this show call and the schedule below, that my entries are my original works and have not been accepted into a previous **Rockville Art League Juried Members' Show**. I will not hold the Rockville Art League (RAL), Glenview Mansion, or the City of Rockville responsible for any possible loss or damage to my entries. As with any show, I understand that all reasonable care will be taken in the handling of my artwork. I give RAL, Glenview Mansion, and the City of Rockville permission to use images of my artwork and publish them as appropriate. I acknowledge a commitment to donate 20% of the sale price of my work, if sold during this show at Glenview to the City of Rockville."

**Eligibility and rules:** The following rules apply for all works entered.

- Each *member in good standing* may enter up to two (2) pieces **by the deadline.**
- **How to enter:** submit your entries using your **PERSONAL LINK and PASSWORD** that WILL be emailed to you emailed to you **by the end of September.** Entries of up to **2 pieces per artist for consideration** by the judge may be submitted by **Wednesday, November 1.**

- **For each submission**, you will be required to include: the **title, medium, dimensions** (note: depth is for sculpture only) and **market price** (NOT wholesale price!) (If Not for Sale, please leave blank and you will be contacted to confirm this) and **submit an image** (jpeg or jpg.) of your piece. The mat or the frame (or glass, glare, wall, furniture etc.) should NOT be visible in the image you submit. Just the artwork itself.
- **If your work is accepted into this show:** a \$10 show fee per artist (not per piece) will be collected at that time.
- RAL retains the right to determine suitability of work for entry in this show.

**Artwork requirements:** If your work is accepted into this show, *each 2-D piece must be ready for hanging*, gallery-wrapped or framed or professionally finished, **securely wired** by Nov. 28.

- The maximum measurement of any framed side is **48 inches**.
- Only **original** works **framed securely with hanging wire** are acceptable. (NO sawtooth hangers or such.) If submitting unframed canvas, edges should be painted or finished.
- **NO WET PAINT** is allowed.
- The **entries may NOT have been exhibited** previously in a **RAL Juried Members' Show**.
- All artists are encouraged to sign their work on either the front or back.
- Entries not meeting the show conditions will not be accepted.
- All work must remain up until the end of the show.
- **Sales:** If any work sells while on display at Glenview, the artist agrees to donate 20% of the sales price to the City of Rockville as specified in the **Show Agreement** above.

#### **Categories of Artwork Include:**

- Oils and acrylics
- Watercolors
- Pastels, drawings, and hand-pulled prints

- Mixed media, collage, experimental, and original computer-generated art
  - Photographs
  - Sculpture and ceramics
- Awards:**
- Best in Show (cash prize)
  - First, Second, Third in all categories (cash prizes)
  - Honorable Mention at Judge's Discretion

#### **Schedule:**

- **October 1 - November 1** - you may enter up to two (2) pieces for consideration online using the link that will be sent to you by the end of Sept. Up to two (2) pieces per artist.
- **Wednesday, November 1** – **Deadline for submissions**
- **Friday, November 10** – notifications of acceptance sent out to all members by this date.
- **TUESDAY, November 28**– *delivery of accepted artwork* at Glenview, **10:00am-1:00pm**; if your work is accepted into this show, you or your designee must deliver your work during this time. The judge will award prizes based on an in-person view.
- **Sunday, December 3**, 1:30-3:30pm, **Meet the Artists Opening** at Glenview Mansion. Palden Hamilton will **award prizes at 2:00pm** with remarks about the work. He will also be available throughout the afternoon to talk with artists.
- **Week of Dec. 4:** A zoom video of the judge discussing his awards choices will be sent out to all members.
- **TUESDAY, January 16** - **pick up artwork** 10:00am-1:00pm. You or your designee must pick up your work on this date.

**Please note:** *Members in good standing\** will have their personal link and password emailed to them the last week of September. **PLEASE SAVE IT.** It will be the same one you use to enter all RAL shows this year.

*\*If you paid your dues for Sept. 1, 2023 – Aug. 31, 2024, you are a member in good standing. PLEASE: if you are unsure of your membership status, ask us!*

You will use your personal link/password that will be sent to you at the end of September to enter your work in the show. Be sure to type in the information specified in this note carefully and clearly.

This information will be used to contact you and to create the virtual show and the labels.

**Note:** When you submit work, *if you entered artwork in the past several RAL Shows*, you may see the images of those pieces. They are marked appropriately for those shows within the system.

If you need help, **please ask ahead of the deadline!**

You may enter work for this show October 1 through November 1.

Deadline for all entries is **Wednesday, November 1.**

Notifications of acceptance will be sent out to all members **by November 10.** This call for entries will also be posted on the Rockville Art League website and emailed out at the end of September as well.

Questions regarding the show? Need help or support with the entry process?

Please contact:

Lisa Sieg: [jshows@rockvilleartleague.org](mailto:jshows@rockvilleartleague.org)

Patrick Sieg: [president@rockvilleartleague.org](mailto:president@rockvilleartleague.org)

## Glenview Mansion Art Gallery Upcoming Exhibits



On Exhibit: Sept. 10-Oct. 6

**Meet the Artists**  
Join us from  
1:30-3:30 p.m. on  
Sunday, Sept. 10.  
Event is free and open  
to the public.

Mygenet Harris, Dustine Hayes, Michael Metzner, Tom Ruttkay, and Jane Walsh, a group of five current and former Albert Einstein High School artists-teachers collaborated together for over 5 years inspiring others to make art. Times5 represents their unique and creative energy.

For information, call 240-314-8681 or 240-314-8660. For recorded directions, call 240-314-5004. Glenview Mansion Art Gallery is wheelchair accessible. Gallery Hours: Monday-Friday, 9 a.m.-4:30 p.m.; gallery is closed on official city holidays.

Glenview Mansion Art Gallery  
at Rockville Civic Center Park  
603 Edmonston Drive  
Rockville, MD 20851

*Times5*: September 10 – October 6



Thank you to everyone (all 170 of you!) who came out for the **Times5** opening on Sunday, Sept. 10! Glenview was filled with such great energy and laughter as people got to take in this amazing show and meet these talented artists. **Times5** represents the creative energy generated when five artists unite daily to solve problems and inspire others to make art. The artists featured in the **Times5** exhibit are a group of artists-teachers, both current and former teachers, at the Art Department of Albert Einstein High School in Kensington who have collaborated at AEHS for more than 5 years. Mygenet Harris, Dustine Hayes, Michael Metzner, Tom Ruttkay, and Jane Walsh are all practicing artists using different mediums of expression. The **Times5** Show is a glimpse of their unique “Visual Artist’s Voices” that are working in harmony. They are also new RAL members.

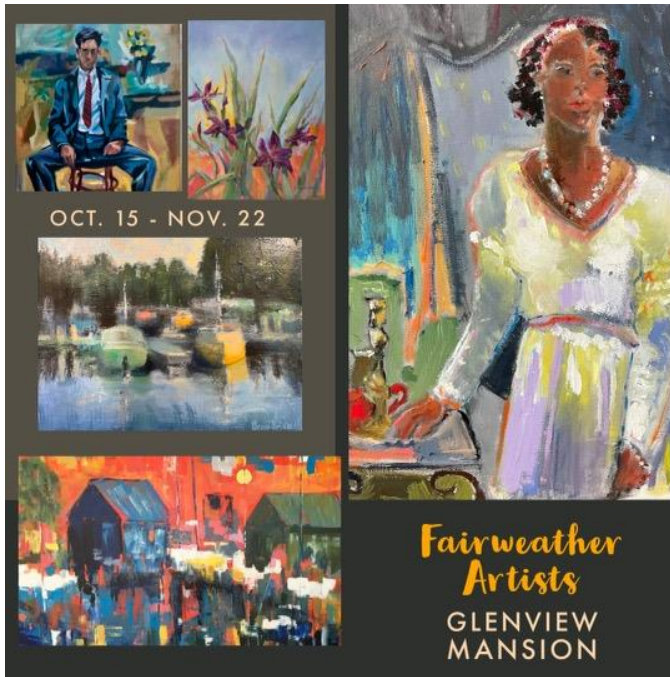


Come see this incredible show. It’s truly “a must see” in person!

There is a virtual show on the RAL website, <https://youtu.be/oOt3rrWtvHY> but you must see the work in person to appreciate it. And you will be glad you did! Bring a friend or two!



Glenview Mansion Art Gallery is open weekdays, Monday – Friday, 9:00am-4:30pm Please check the Glenview Mansion website before coming out or call 240-314-8681. Plenty of parking and there is an elevator to all levels of the gallery. (Note: the mansion will be CLOSED to the public on Thursday, Sept. 21.)



***Fairweather Artists:***  
October 15 – November 22

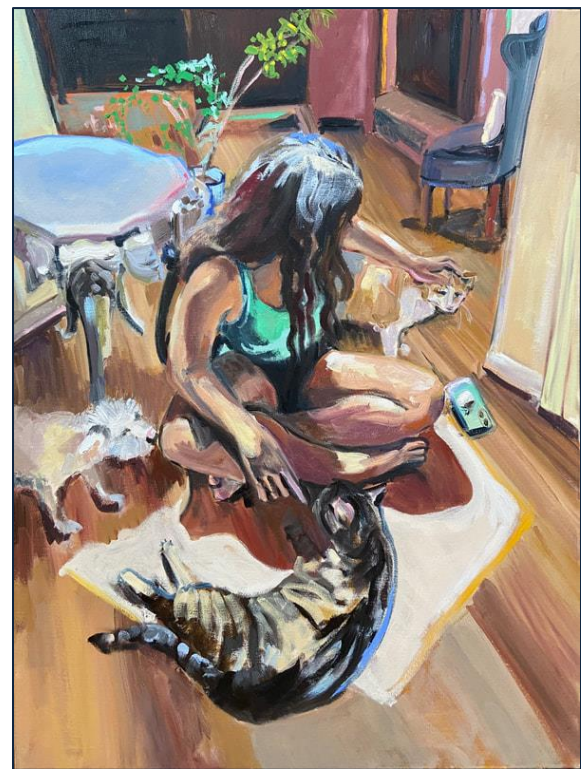
Members of ***Fairweather Artists***, Nancy Arons, Ellen Broadman, Sarah Clayton Davis, Karen Kuell Epstein, Susan Sinclair Galego, Lee Ann Howdershell, Jennifer Howard, Ingrid Matuszewski, Lisa Sieg, Patrick Sieg, and Stacy Yochum with work in oils and acrylics, gouache, collage, and photography present an extraordinary show of beautiful vistas, vignettes, and subjects with works. Meet the Artists at the opening on October 15, 2021, from 1:30 to 3:30 pm.

***Rockville Art League Juried Members Winter Show: December 3 – January 12***

Please see the ***call for entries*** in this newsletter. This is one of our semi-annual large, juried member shows, with one in the winter and another in the spring. Members may enter up to two (2) pieces of your best work to be considered by the judge. This is not a themed show; the word winter just indicates the time of year.

Thank you for supporting the arts and your fellow artists.

**MEMBER NEWS**



**Cindy Rivarde's** artwork, "Gathering," is included in a show, "Painted: Contemporary Realism in Maryland," at the Hamilton Gallery, 5502 Harford Road, Baltimore, MD 21214, from October 6 through 29. The opening reception is on Saturday, October 7 from 1-4.





An Artists Reception is on Sunday, October 15 from 1-3. The curator is Grace Doyle.  
Gallery Hours: Friday 1-5, Saturday 9-5, and Sunday 11-3.

### Discount on Custom Framing

**Jae Shin** has been working as a professional picture framer for 2 decades at the Framers' Workroom located in Tenleytown, DC. Jae offers 15% off on custom framing jobs for RAL members. Please feel free to contact Jae for any framing jobs. Framers' Workroom, 4431 Wisconsin Ave., NW, Washington DC 20016 202-363-1970. Store hours: Mon-Sat 10:00-5:30. [www.FramersWorkroomDC.com](http://www.FramersWorkroomDC.com)  
Email: [Jaeshin@FramersWorkroomDC.com](mailto:Jaeshin@FramersWorkroomDC.com)




 **The Compass Atelier**  
Art classes for beginners and experienced artists  
Special workshops      Study Abroad  
Home of the revolutionary Master Artist Program



[TheCompassAtelier.com](http://TheCompassAtelier.com)    [TheCompassAtelier@gmail.com](mailto:TheCompassAtelier@gmail.com)

### NEWSLETTER SUBMISSIONS

Is your art included in a show? Have other news you wish to share with RAL members? Please send your submissions by the **15<sup>th</sup>** of each month for inclusion in the next newsletter, to: [newsletter@rockvilleartleague.org](mailto:newsletter@rockvilleartleague.org)



**A Work of Art** by Debra Halprin  
Giclée Printing and Photography Service  
Create Fine Art Prints of your Artwork  
on Watercolor Paper or Canvas

Mastering the Fine Art of Giclée Printing

[HalprinArt.com](http://HalprinArt.com)  
301-910-4750

email: [Debra@HalprinArt.com](mailto:Debra@HalprinArt.com)  
in Rockville, Maryland

## GLENVIEW MANSION SHOWS

<b>Glenview Mansion Schedule</b>				
<b>2023</b>				
	ARTISTS	<b>Delivery of Artwork 10am-1pm</b>	<i>Meet the Artists</i> Opening Event	<b>Pick-up Artwork 10am-1pm</b>
SEPT/OCT	Glenview Exhibit <i>Times Five</i>	TUESDAY, Sept. 5 *3:00-5:00pm	Sunday, Sept. 10 1:30-3:30pm	MONDAY, October 9 *3:00-5:00pm
OCT/NOV	Glenview Exhibit <i>Fairweather Artists</i>	Monday, October 9 10:00am-1:00pm	Sunday, October 15 1:30-3:30pm	TUESDAY, Nov. 28 10:00am-1:00pm
DEC/JAN	RAL Juried Members' Winter Show	TUESDAY, Nov. 28 10:00 – 1:00pm	Sunday, Dec. 3 1:30-3:30pm	TUESDAY, Jan. 16 10:00am-1:00pm

Artists displaying work at Glenview will be contacted with detailed information about their shows, including the required show agreement. Labels and support to hang the show will be provided. The RAL shows are virtual on our website as well as in person at Glenview.

*Meet the Artists* events are free and open to the public. Plenty of parking and there is an elevator to all levels of the gallery. The gallery is open weekdays Monday-Friday, 9am-4:30pm. Closed on official city holidays. Please check Glenview Mansion website before visiting.

Thank you for supporting the arts and your fellow artists!



## RAL BOARD OF DIRECTORS

<b>Name</b>	<b>Position</b>	<b>E-mail</b>
Patrick Sieg	<i>President</i>	<a href="mailto:president@rockvilleartleague.org">president@rockvilleartleague.org</a>
Vacant	<i>President Elect</i>	<a href="mailto:president@rockvilleartleague.org">president@rockvilleartleague.org</a>
Lisa Sieg	<i>Vice President/ Exhibits Coordinator</i>	<a href="mailto:jshows@rockvilleartleague.org">jshows@rockvilleartleague.org</a>
Richard Fisher Sarah Sohraby	<i>Program Coordinators</i>	<a href="mailto:programs@rockvilleartleague.org">programs@rockvilleartleague.org</a>
Lisa Sieg	<i>Volunteer Coordinator</i>	<a href="mailto:volunteer@rockvilleartleague.org">volunteer@rockvilleartleague.org</a>
Vacant	<i>Membership Coordinator</i>	<a href="mailto:membership@rockvilleartleague.org">membership@rockvilleartleague.org</a>
Rob Gale	<i>Treasurer</i>	<a href="mailto:treasurer@rockvilleartleague.org">treasurer@rockvilleartleague.org</a>
Cathy McDermott	<i>Secretary</i>	<a href="mailto:secretary@rockvilleartleague.org">secretary@rockvilleartleague.org</a>
Susan Dunnell	<i>Newsletter Editor</i>	<a href="mailto:newsletter@rockvilleartleague.org">newsletter@rockvilleartleague.org</a>
Liliane Blom	<i>Liaison Officer</i>	<a href="mailto:liaison@rockvilleartleague.org">liaison@rockvilleartleague.org</a>
Dave Allen	<i>Publicity/marketing</i>	<a href="mailto:publicity@rockvilleartleague.org">publicity@rockvilleartleague.org</a>
Helen Wood	<i>Communications</i>	<a href="mailto:communications@rockvilleartleague.org">communications@rockvilleartleague.org</a>
Vacant	<i>Hospitality</i>	<a href="mailto:hospitality@rockvilleartleague.org">hospitality@rockvilleartleague.org</a>
Diane Jeang	<i>Member Shows</i>	<a href="mailto:mshows@rockvilleartleague.org">mshows@rockvilleartleague.org</a>
Michael Auger	<i>Webmaster</i>	<a href="mailto:webmaster@rockvilleartleague.org">webmaster@rockvilleartleague.org</a>
Eileen Mader	<i>Founder</i>	

Rockville Art League  
P.O. Box 4026  
Rockville, MD 20850

