



RockvilleArtLeague.org

Vol. XXXII No. 5

January 2023

NEXT MEETING: Thursday, February 2 —6:30 to 8:00 PM
Glen Kessler, the Art of Portraiture

Message from the President, Patrick Sieg

Dear Rockville Art League members and artists,

A Korean proverb says, “There is no winter without snow, no spring without sunshine and no happiness without companions.”

In 2022 we loosened up a bit...from the Covid lockdowns and the associated angst we have all been feeling for the past nearly three years. While there is still illness and danger in the world, it feels better and more hopeful these days.

The heart of winter is on the horizon and knowing that, we will bear (and perhaps even enjoy) a bit of snow.

And speaking of companionship...we were lucky to come together for our winter juried art show. Heartfelt thanks to all who took a chance and entered and congratulations to the artists who have work on display. Our juried shows are competitive, and it is gratifying to see our members submit their best work.

Our Judge, Zdeno Mayercak made the difficult choices of which pieces to include. Each and every judge juries the entries without seeing names or prices and then chooses the artwork to fit their vision for a beautiful show. They are given the gallery’s capacity and request that they choose thoughtfully...the pieces for inclusion and award winners.

We pick jurors who bring unique perspectives. We have asked oil painters, watercolorists, art historians and Zdeno Mayercak, a sculptor. Each judge is both accomplished and willing to invest much time, effort, and emotion in making their selections.



Lisa Sieg worked tirelessly with all the many moving parts that must be coordinated (including the aesthetic curation of the work) to form such a beautiful exhibit.

We are grateful to the members who helped us with the show's logistics including David Allen, Joanne Aarons, Michael Auger, Rob Gale, Lynn Faiola, Marija Lasalde, Cecelia Laurendeau, Jennifer Lubell, Cathy and Rich McDermott, Sarah Sohraby and from the City of Rockville, Betty Wisda. It takes dedicated and willing companions to produce our shows.

We had a record number of artists and friends present for our winter juried show's "Meet the Artists" event and thank you to the nearly 180 people that attended.

If you haven't had a chance to see the show, then please do yourself a favor and do so and remember, art is best appreciated in person. Please bring your friends and family.

December is an excellent time to take stock of our organization, where we are and what we have accomplished in the year. For the Rockville Art League...

- Membership numbers are again up year over year.
- Our finances are in excellent shape.
- Our relationship with the City of Rockville and the staff of the Glenview Mansion is strong.
- We have provided opportunities for our members to exhibit their work. Note that there were five RAL sponsored exhibits at the mansion in 2022 as the gallery reopened after Covid. And these shows were also virtual.
- We continue to provide interesting and engaging speakers monthly.
- And we are staying true to our mission of supporting art in our community.

Speaking of guest speakers...in February Artist, Compass Atelier leader and supporter of the Rockville Art League, Glen Kessler will share...

Efficient Portrait Painting: How to Paint a Portrait Quickly and Accurately.

He will demonstrate a method for getting a quick yet accurate portrait painting. He will produce a portrait (and beautiful painting) in only 90 minutes.

His demonstration will be virtual, and we plan to record the session.

We cannot stop the winter from arriving and should instead consider it a gift. It is a time for recovery, creativity, and joy.

I hope you have a joyous holiday season and I look forward to seeing you in the new year.

Sincerely,
Patrick Sieg
President
The Rockville Art League

Upcoming Speaker Series:

Thursday, February 2 on Zoom: **Glen Kessler** *Efficient Portrait Painting: How to Paint a Portrait Quickly and Accurately*



RAL Juried Members' Winter Show

The *Rockville Art League Juried Members' Winter Show* is on exhibit at the Glenview Mansion Art Gallery December 4 through January 13 and was juried by renowned sculptor and professor Zdeno Mayercak.

Thank you to those who attended the gallery walk-through with the judge on Thursday, Dec. 8. MANY THANKS to Zdeno Mayercak for jurying such a beautiful show and for his insightful comments and critiques on the works in the show.

There are over 110 artworks in a variety of mediums in this incredible show by our artists on display at the Glenview Mansion Art Gallery (603 Edmonston Drive at the Rockville Civic Center Park). The gallery is open to the public weekdays, Monday – Friday, 9:00am-4:30pm with plenty of parking. The art gallery is wheelchair accessible with an elevator to all levels. For information call 240-314-8681 or 240-314-8660. For recorded directions call 240-314-5004. Or please visit the Glenview Mansion website for any closures before coming out.

Art is best viewed in person and Glenview Mansion is quite a beautiful gallery, but a virtual view is also available on the RAL website. It includes the judge's notes and any gallery updates. Awards, dimensions, prices, etc., are listed on each individual piece. Please click on the **RAL WINTER SHOW** button under the word *Exhibits* on the website. Please share the show with your friends and family.

Thank you for supporting the arts and your fellow artists.



On Exhibit
Dec. 4, 2022-Jan. 13, 2023


Rockville Art League
Juried Members' Winter Show


Join us for a gallery opening reception and "Meet the Artists" from 1:30-3:30 p.m. on **Sunday, Dec. 4**. Event is free and open to the public.

For information, call 240-314-8681 or 240-314-8660. For recorded directions, call 240-314-5004. *Glenview Mansion Art Gallery is wheelchair accessible.* **Gallery Hours:** Monday through Friday, 9 a.m.-4:30 p.m.; Gallery closed on official city holidays.

Glenview Mansion Art Gallery
at Rockville Civic Center Park
603 Edmonston Drive
Rockville, MD 20851

Rockville Art League 2022 - 2023 Juried Winter Show - Award Winners

Award	Art Title	Artist
Best in Show	Untitled	Zeinat Gelli
		

<u>Oils and Acrylics</u>			
First Prize	Lady with Mandolin	Walter Blackwell	
			
Second Prize	Ritual	Cynthia Rivarde	
Third Prize	Dreaming Dragons	Robin Lazarus-Berlin	
Honorable Mention	Come Take a Walk With Me	Ingrid Matuszewski	
Honorable Mention	Light Stretch	Patrick Sieg	
Honorable Mention	Oregon Rain	Mary Kosterlitz	

Watercolors

First Prize

Among the Wolves

Ally

Morgan



Second Prize

The Younger Brother

Stephanie

Gustavson

Third Prize

Quiet Day in Provence

Angela

Lacy

Honorable Mention

Girls III

Ally

Morgan

Drawing, Pastels and Hand-Pulled Prints

First Prize

Summer's Gold Dust

Kathleen

Tynan



Second

In the Boudoir

Diane

Weiner

Third Prize

Standing Woman

Maurice

Margulies

Honorable Mention

Towering Storm (a.k.a. Tormenta Ciernes)

Mauricio

Athie

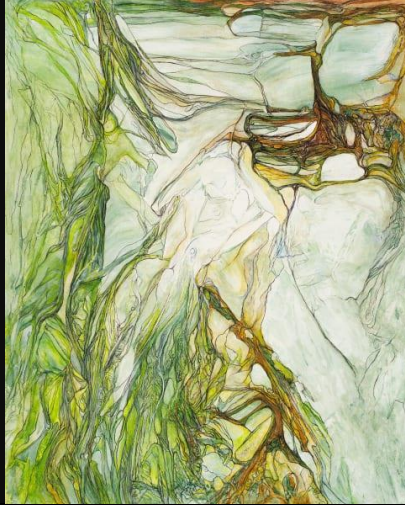
Mixed Media, Collage, Experimental and Original Computer-Generated Art

First Prize

Billy Ray Learns the Lesson of Flowing

Bill

Johnson



Second Prize

Congo Dance

Sarah

Sohraby

Third Prize

Grieve Not

Sally J K

Davies

Honorable Mention

Woman of Color

Beverly

Valdez

Sculptures and Ceramics

First Prize

Captive

A. Barry

Belman



Second Prize

Keep Going

Sandra

Franklin
Ehlers

Third Prize

Playing Blue Skies

Jane

Silverman

Honorable Mention

Empty Suit

Pearl

Chang

Honorable Mention

Entwined

Nancy

Jakubowski

Photographs

First Prize

Fishermen

Howard

Clark



Second Prize

Winterfall

Lisa

Sieg

Third Prize

Hope

Estelle

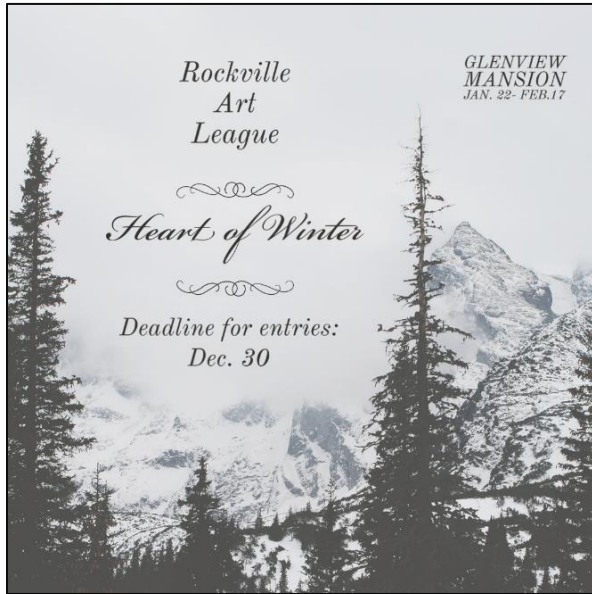
Schwalb

Honorable Mention

Peggy's Cove

Howard

Clark



Rockville Art League
HEART OF WINTER
January 22 – February 17, 2023
Glenview Mansion

Call for entries:
December 1 – December 30, *online*
submissions only

Rockville Art League members *in good standing* are invited to submit original works *up to two (2) pieces of art for consideration* for the show *Heart of Winter* to be exhibited at the Glenview Mansion Art Gallery. This show is sponsored by the Rockville Art League and the City of Rockville Arts Division.

“In the depth of winter, I finally learned that within me there lay an invincible summer.”
 Albert Camus

We are looking for your interpretations that portray winter – the beauty in bleakness, the branches, the underbrush, the wildlife, dramatic shadows, the unique atmosphere, a wintry scene, outdoors, indoors, a cozy chair in a sunny spot or by the fire, dreaming of summer,

uplifted by a bouquet of flowers or a winter garden. Or perhaps you head to a warmer locale, “the winter of discontent, made into a glorious summer....”

This show *Heart of Winter* will be on display in conjunction with the *Rockville Student Juried Art Show* at Glenview.

Due to space limitations, we can accept only a certain number of pieces. Interested members may enter up to 2 pieces for consideration.

Original artwork only may be submitted in the following categories of artwork:

- oils/acrylics
- watercolors
- drawings, pastels, hand-pulled prints
- mixed media, collage, experimental
- photography
- sculpture
- Note: for this show the work may have been exhibited in a prior show and acceptance in this show does not preclude its entry in a future show.

All 2-D pieces will need to be framed, gallery-wrapped or professionally finished, securely wired, ready for hanging with the *maximum* measurement of any framed side of 48 inches. If submitting unframed work, the edges should be painted or finished. No wet paint. Entries not meeting the show conditions will not be accepted. RAL retains the right to determine the suitability of the work for entry in this show.

TO ENTER: please use *your same personal link and password* that was sent to you to enter your work for the *RAL Juried Members’ Winter Show*.

When you submit work, you will need to complete the following for each of your pieces (up to 2 entries only): 1.) **title** 2.) **medium** 3.) **market price** (not wholesale!) (If NFS, please leave blank and we will confirm with you), 4.) a clear **image** (jpg.) of your artwork, and 5.) **dimensions** (for 2-D artwork - height and width only; depth is for sculpture only).

Note: When you submit work, if you entered artwork in the past several RAL Shows, you may see the images of those pieces. They are marked appropriately for those shows within the system.

Show agreement: you will need to agree to the following *before your work can be exhibited at Glenview*. Please do so once notifications are sent out.

“I agree to the exhibition dates as listed below, that my entries are my original works, and I will not hold the Rockville Art League (RAL), Glenview Mansion, Glenview Mansion Art Gallery, or the City of Rockville responsible for any possible loss or damage to my entries while on the Rockville Civic Center Park property. I understand that all reasonable care will be taken in handling my entries. I give RAL, Glenview Mansion, and the City of Rockville permission to photograph my artwork and publish them as appropriate. I acknowledge a commitment to donate 20% of the sale price of my work, if sold during this show at Glenview to the City of Rockville.”

Schedule:

Thursday, Dec. 1 – Friday, Dec. 30: up to 2 entries per member

Friday, Dec. 30: Deadline for all entries

Monday, Jan. 9: Notifications sent out to all members

TUESDAY, January 17, 10:00am-1:00pm, delivery of artwork

Sunday, January 22, 1:30-3:30pm Meet the Artists

Tuesday, Feb. 21 – pick up of artwork - 10:00am-1:00pm

This show will be exhibited in person at Glenview Mansion. A virtual show will also be available to view on the Rockville Art League website and sent to all members to share.

We look forward to seeing your artwork.

Call for entries: Dec. 1 – Dec. 30

As always, if you need help, please ask ahead of the deadline.

Questions or need help contact:

Lisa Sieg: jshows@rockvilleartleague.org

Patrick Sieg: president@rockvilleartleague.org

City of Rockville
Get Into It

Glenview Mansion Art Gallery
at Rockville Civic Center Park

2023
CALL FOR ARTISTS
Rockville Student Juried Art Exhibit

City of Rockville's Arts Division and the Rockville Art League announce the 2023 Rockville Student Juried Art Exhibit. Students (grades 6-12) who live or attend school located within the corporate limits of the City of Rockville are eligible. Online form at:

Interested students need to complete and submit the online entry form by: **Tuesday, Jan. 3.**

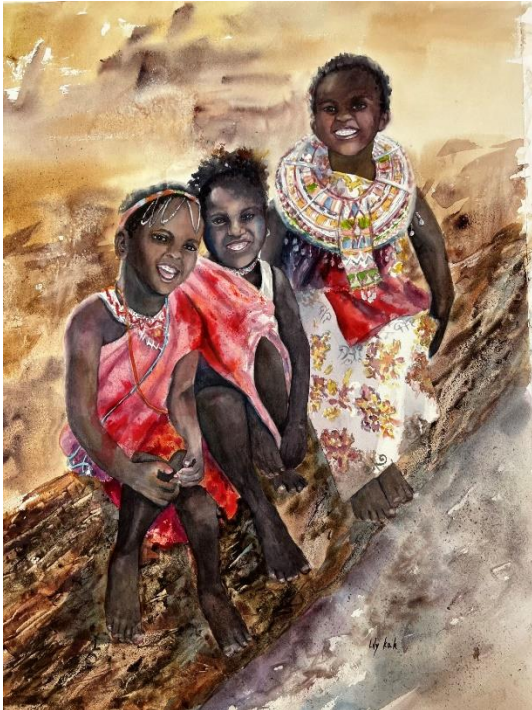
The "Meet the Artists" event is scheduled from 1:30-3:30 p.m. on Sunday, Jan. 22.

The exhibit dates are Jan. 22-Feb. 17.

HOURS AND LOCATION
Glenview Mansion Art Gallery at Rockville Civic Center Park
603 Edmonston Drive, Rockville, MD 20851
Gallery Hours: Monday through Friday, 9 a.m.-4:30 p.m.; closed official City holidays.
Call 240-314-8660 to check on availability of gallery for viewing.

FOR MORE INFORMATION
Please contact Betty Wisda, Arts Programs Supervisor, at bwisda@rockvillemd.gov.

MEMBER NEWS



Lily Kak is displaying 13 watercolor art pieces to portray women's empowerment and cultural diversity at "Busboys and Poets" during December 5-April 10. Busboys and Poets is a restaurant, bar, bookstore, and community gathering place where racial and cultural connections are consciously uplifted. The restaurant is located at **235 Carroll St. NW, Washington, D.C. 20012.**



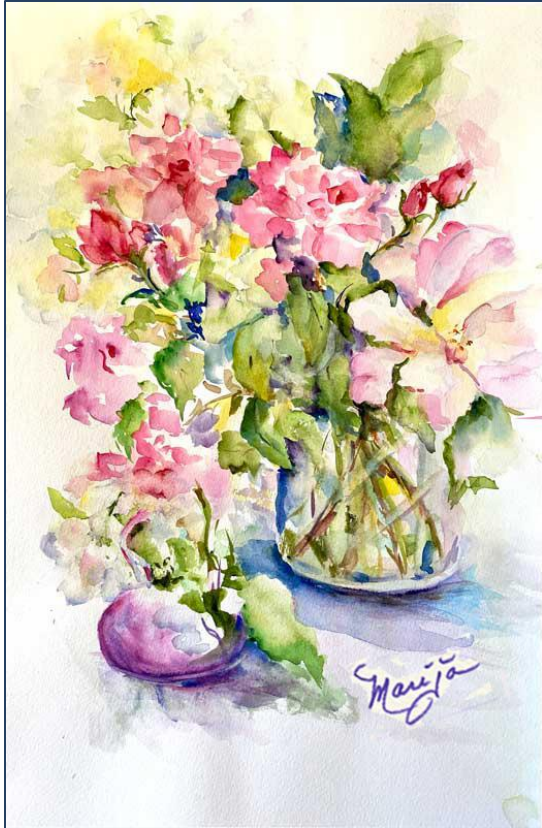
Howard Clark's photo of "Glade Creek Grist Mill" earned an Honorable Mention in Olney Art Association's Juried Winter Show.



Two of Howard's entries in the 2022 Ward Museum's Photo Festival ("Nature's Abstract Art" and "MD's WWII Memorial in Annapolis") received Honorable Mention.



Finally, Howard's image "Sunrise on the Chesapeake" won an Honorable Mention in the 6th Annual Photography Contest of the Maryland Photography Alliance.



RAL Members **Stephanie Gustavson** and **Marija Lasalde** are two of eight artists featured in the Kindred Creatives' Winter Art Exhibit hosted by Artistic Custom Framing & Gallery (11410 Georgia Ave, Wheaton, MD 20902). The show will run from December 1 through December 31, with an Artist's Reception on Saturday December 3, from 4-6 pm.



Elizabeth Steel has three mixed media pieces juried into the 89th Annual International Exhibition of Fine Art in Miniature (2022). The show, sponsored by The Miniature Painters, Sculptors & Gravers Society of Washington, D.C., at Strathmore Mansion, will run from Nov. 19, 2022, through Jan. 7, 2023. The public opening is scheduled for November 19, 2-4 pm.

OPPORTUNITY

Laurel Art Guild is pleased to announce it will begin accepting entries for the **54th Annual Open Juried Exhibition** on December 1, 2022. **Deadline for entries is March 20, 2023.** The exhibit will be held at the Montpelier Arts Center in Laurel, Maryland from May 6-June 4, 2023.

Entries may be submitted online at <https://laurelartguild.org/lag-open>

Six prizes will be awarded: 1st prize: \$300; 2nd prize: \$250; 3rd prize: \$200; and three merit awards: \$50/each

Juror for the exhibit is Lindsay McCulloch (www.lindsaymcculloch.com), a well-known artist and art instructor at Anne Arundel Community College in Arnold, Maryland. Ms. McCulloch holds an MFA in Painting from Boston University and received her MA and BA from the University of Virginia. Her work has been featured in museums and galleries throughout the United States and abroad.

Important dates for the exhibit are as follows:

December 1, 2022 - Applications accepted on the laurelartguild.org website
March 20, 2023-Deadline for entries
May 1, 2023-Drop off of accepted art at Montpelier Arts Center, laurel, Maryland, from noon-4:00pm
May 6, 2023-Exhibit opens


May 7, 2023-Reception at Montpelier Arts Center, 2-4 pm
June 4, 2023-Exhibit closes

Entries are open to adult residents of Maryland, Virginia, DC, Pennsylvania, Delaware, and New Jersey.

Questions about the exhibit should be sent to lagopen@laurelartguild.org.

Discount on Custom Framing


Jae Shin has been working as a professional picture framer for 2 decades at the Framers' Workroom located in Tenleytown, DC. Jae offers 15% off on custom framing jobs for RAL members. Please feel free to contact Jae for any framing jobs. Framers' Workroom, 4431 Wisconsin Ave., NW, Washington DC 20016 202-363-1970. Store hours: Mon-Sat 10:00-5:30. www.FramersWorkroomDC.com
Email: Jaeshin@FramersWorkroomDC.com




A Work of Art by Debra Halprin
Giclée Printing and Photography Service
Create Fine Art Prints of your Artwork
on Watercolor Paper or Canvas
Mastering the Fine Art of Giclée Printing
HalprinArt.com
301-910-4750
email: Debra@HalprinArt.com
in Rockville, Maryland

NEWSLETTER SUBMISSIONS

Is your art included in a show? Have other news you wish to share with RAL members? Please send your submissions by the **15th** of each month for inclusion in the next newsletter, to: newsletter@rockvilleartleague.org



The Compass Atelier
Art classes for beginners and experienced artists
Special workshops Study Abroad
Home of the revolutionary Master Artist Program



TheCompassAtelier.com TheCompassAtelier@gmail.com

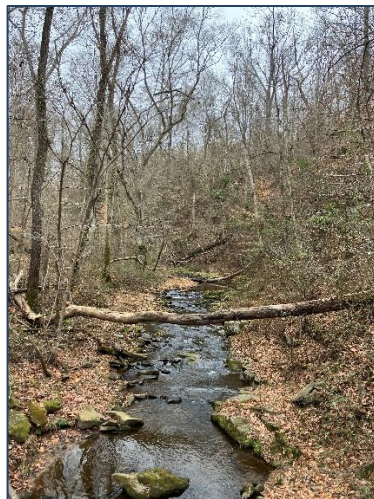
GLENVIEW MANSION CONFERENCE ROOM SHOWS

Glenview Mansion Schedule				
2022-2023	ARTISTS	Delivery of Artwork 10am-1pm	Meet the Artists Opening Event	Pick-up Artwork 10am-1pm
DECEMBER/ JAN 2023	RAL Juried Members Winter Show	TUESDAY Nov. 29	Sunday, Dec. 4 1:30-3:30pm	TUESDAY, Jan. 17
JANUARY/ FEBRUARY 2023	Rockville Student Juried Art Show <i>RAL Heart of Winter Show</i>	TUESDAY Jan. 17	Sunday, Jan. 22 1:30-3:30pm	TUESDAY, Feb. 21
FEBRUARY/ MARCH	Washington Water Color Association	TUESDAY, Feb. 21	Sunday, Feb. 26 1:30-3:30pm	MONDAY, March 27
MARCH/APRIL - MAY	Maryland Pastel Society	MONDAY, March 27	Sunday, April 30 1:30-3:30pm	TUESDAY, May 16
MAY/JUNE	RAL Juried Members' Spring Show	TUESDAY May 16	Sunday, May 21 1:30-3:30pm	MONDAY, June 26

As we continue to adapt to the pandemic, we will follow the safety rules as mandated by the City of Rockville for gatherings which include masking and regulations for receptions. We will pass on to our artists all pertinent information as we know it. We appreciate your patience, flexibility, and support.

Artists displaying work at Glenview will be contacted individually with detailed information about their shows, including the required show agreement. Labels and support to hang the show will be provided. These shows will be virtual on our website as well as in person at Glenview.

Thank you for supporting the arts and your fellow artists!



RAL BOARD OF DIRECTORS

Name	Position	E-mail
Patrick Sieg	<i>President</i>	president@rockvilleartleague.org
Vacant	<i>President Elect</i>	president@rockvilleartleague.org
Lisa Sieg	<i>Vice President/ Exhibits Coordinator</i>	jshows@rockvilleartleague.org
Richard Fisher Sarah Sohraby	<i>Program Coordinators</i>	programs@rockvilleartleague.org
Lisa Sieg	<i>Volunteer Coordinator</i>	volunteer@rockvilleartleague.org
Vacant	<i>Membership Coordinator</i>	membership@rockvilleartleague.org
Rob Gale	<i>Treasurer</i>	treasurer@rockvilleartleague.org
Cathy McDermott	<i>Secretary</i>	secretary@rockvilleartleague.org
Susan Dunnell	<i>Newsletter Editor</i>	newsletter@rockvilleartleague.org
Liliane Blom	<i>Liaison Officer</i>	liaison@rockvilleartleague.org
Dave Allen	<i>Publicity/marketing</i>	publicity@rockvilleartleague.org
Paula Zeller	<i>Critique Coordinator</i>	critiques@rockvilleartleague.org
Vacant	<i>Communications</i>	communications@rockvilleartleague.org
Vacant	<i>Hospitality</i>	hospitality@rockvilleartleague.org
Diane Jeang	<i>Member Shows</i>	mshows@rockvilleartleague.org
Michael Auger	<i>Webmaster</i>	webmaster@rockvilleartleague.org
Eileen Mader	<i>Founder</i>	

Rockville Art League
P.O. Box 4026
Rockville, MD 20850

