



RockvilleArtLeague.org

Vol. XXXI No. 2

October 2021

**NEXT MEETING: Virtual Meeting: Thursday, October 7—7:00 PM
Agnes Grochulska, “Drawing with Expression Not Expectation”**

Message from the President, Patrick Sieg

Dear Rockville Art League artists,

The 2021/2022 RAL year is off to a great start!

Quite a few of our artists have renewed their memberships and we have seen a few members who “sat out” the 2020/2021 year due to the pandemic (or other reasons) return.

If you are seeing this newsletter and have not yet renewed...please do so. Without you we cannot continue with the programs and fun that our league of artists enjoy and support.

Renewing is simple...go to the membership section of our website

www.rockvilleartleague.org and choose the membership option, then follow the instructions.

We have a terrific slate of speakers this fall. We kicked off the year with a repeat visit from art historian, Dr. Irina Stotland who shared her insights on the “deliciously bizarre” painting “The Garden of Earthly Delights” by Dutch Renaissance artist Hieronymus Bosch. Or is Bosch bizarre and the painting simply frightening?

Irina’s talk was certainly “delicious.”

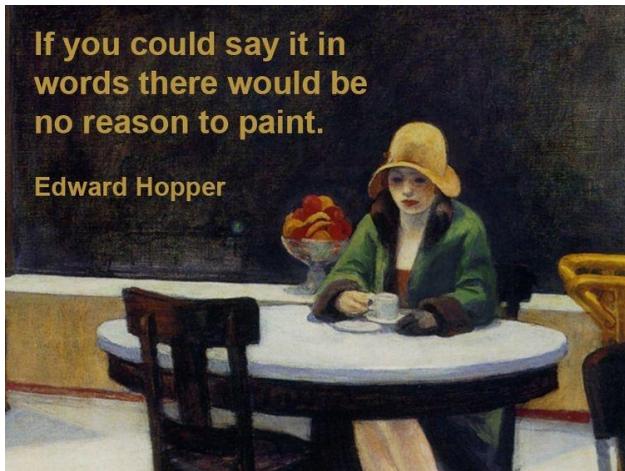
2021 marks the fifth year that Dr. Stotland has keynoted our September meeting and that certainly constitutes a tradition that we hope will continue in the future. With luck we will be seeing her in person next year...fingers crossed.

Our October speaker will be artist Agnes Grochulska.

I have been acquainted with Agnes and her art for several years and admire her vision and technique. She is an amazing artist and seeing her work and hearing about her artist journey will be a gift for all.

In November we will welcome back Dr. Lorena Bradford who develops and runs accessible programs in the Education Division of the National Gallery of Art in Washington, DC. Dr. Bradford judged our winter juried show back in 2017 and she has agreed to share a taste of the program she developed titled “The Art of Looking.” This will be an interactive session and I cannot wait to participate.

“If you could say it in words there would be no reason to paint”. -Edward Hopper
Thankfully RAL artists have plenty of reasons to create art...even those who are good with words. And they are willing to share their art with the public.



We recently took down our 2021 Spring Members Juried Show that was both virtual and, thankfully, an in-person exhibit at the mansion. It was a beauty and sincere thanks to those artists who were able to attend our “meet the artists” event.

A new show “Fairweather Artists” has recently been installed and is both virtual and on display at the mansion.

Most of the participants in this show are also members of our Rockville Art League. The virtual link to this show is as follows...

https://www.artworkarchive.com/profile/rockville_art_league/exhibition/fairweather-artists

I hope all members will view the Fairweather Artists show and you will be glad you did.

In late October a virtual show that includes work from last winter’s “For Love of Glenview” virtual exhibit combined with five RAL artists who were originally scheduled for individual boardroom shows that had to be postponed due to the pandemic. This show will be both virtual and on display in the gallery.

Finally, our Winter Juried Show is coming up quickly.

Famous Award-Winning Artist Christine Lashley, who presented to our group last spring, has agreed to jury this show.

Details about entering this show and specific requirements to participate are detailed later in this newsletter as are details about Christine Lashley’s art practice.

Our juried shows are highlights for our league each year and they are competitive and beautiful.

Our winter show will be a blend of both virtual and in-person elements.

There is much happening with the Rockville Art League and so much we members can be proud of.

Thank you all for being a part of such a dynamic group.

Sincerely,
Patrick Sieg
President, The Rockville Art League

Rockville Art League 2021 Speaker Series

**Thursday, October 7, 7:00pm on Zoom:
Agnes Grochulska “Drawing with Expression
Not Expectation”**

(Zoom invitation will be sent out to members a few days prior)



Please join us as we welcome portrait artist Agnes Grochulska discuss her uniquely expressive paintings and drawings as well as her journey. Polish-born, she studied at the Warsaw Academy of Fine Arts and currently lives and works in Richmond. Her work has been exhibited at galleries in New York City, Miami, and abroad. A solo exhibition of her work “Line and Color” took place at Eric Schindler Gallery in Richmond, Virginia, May 2019. Recent exhibitions include NOMAD St. Moritz, Switzerland, and “New Waves 2020” at the Virginia Museum of Contemporary Art, curated by Susan Thompson, an Associate Curator at the Guggenheim Museum, where her painting, “Lia,” was awarded The People’s Choice Award. Her work has been showcased in Colossal Magazine, and other art publications. Her drawings and paintings have been shown and privately collected throughout the US and around the world. For more information and to see samples of her work please visit her website: <http://www.agnesgrochulska.com>

Thursday, November 4, on Zoom: Dr. Lorena Bradford from the National Gallery of Art on “The Art of Looking”

RAL Juried Members’ Winter Show

DECEMBER 5, 2021- JANUARY 14, 2022

Glenview Mansion

Awards on Zoom: Thursday, December 9, 7pm

Call for entries: deadline Friday, October 29.
Online registrations only.

Judge: We are honored that renowned artist Christine Lashley will judge our Rockville Art League Juried Members’ Winter Show. Members may remember her video presentation

in March. Please read detailed information about Christine Lashley below.

This show will be on display in person at Glenview Mansion with the virtual show available on our website. Christine Lashley will announce the award-winning pieces on **Thursday, December 9 at 7:00pm on Zoom.** (A link will be sent to members a few days prior.)

Call Deadline: You will be asked to submit your work **online**. *Members in good standing* may submit up to 2 pieces of work for this show beginning the first week of October through Friday, October 29. No submissions will be accepted after the **October 29 deadline**. *If your work is accepted into this show, you will be informed by November 12.* Please read all the information below carefully.

Entry Fee: A \$10 show fee will be collected from *accepted* artists (not per piece).

Eligibility and rules: The following rules apply for all works entered. Each member **in good standing** may enter up to two pieces.

- For each submission you will be required to submit an image (jpeg or jpg.) of your piece online with the submission link that will be emailed to you. The mat or the frame (or glass, glare, wall, etc.) should NOT be visible in the image you submit. Just the artwork itself.
- **IMPORTANT:** the submission form (with your personal link and password) will be *emailed out* to members *in good standing* **the first week of October**. Please mark or save your personal link and use it when you are ready to submit your work (up to 2 pieces). If you do not receive the email with the link by October 7, please send a note to president@rockvilleartleague.org.

If your work is accepted into this show, each piece must be ready for hanging, gallery-wrapped or framed or professionally finished, securely wired.

- The maximum measurement of any framed side is **48 inches**.
- Only **original** works **framed securely with hanging wire** are acceptable. (No sawtooth hangers or such.) If submitting unframed canvas, edges should be painted or finished. No wet canvases are allowed.
- The **entries may not have been exhibited** previously in a RAL Juried Members Show. All artists are encouraged to sign their work on either the front or back.
- Entries not meeting the show conditions will not be accepted.
- RAL retains the right to determine suitability of work for entry in this show.
- All work must remain up until the end of the show.
- **Sales:** As this will be an in-person show, if any work sells while on display at Glenview, the artist agrees to donate 20% of the sales price to the City of Rockville.
- **The Show Agreement:** Artists showing work at Glenview must agree to the following:

“I agree to the rules of the show as presented in the show call and the schedule below, that my entries are my original works and have not been accepted into a previous Rockville Art League Juried Members’ Show, and I will not hold the Rockville Art League, Glenview Mansion or the City of Rockville responsible for any possible loss or damage to my entries. As with any show, I understand that all reasonable care will be taken in the handling of my artwork. I give RAL, Glenview Mansion, and the City of Rockville permission to use images of my artwork and publish them as appropriate. I acknowledge a commitment to donate 20% of the sale price of my work, if sold during a physical show at Glenview to the City of Rockville.”

Categories of Artwork Include:

- Oils and acrylics
- Watercolors
- Pastels, drawings, and hand-pulled prints

- Mixed media, collage, experimental, and original computer-generated art
- Photographs
- Sculpture and ceramics

Awards:

- Best in Show (cash prize)
- First, Second, Third in all categories (cash prizes)
- Honorable Mention at Judge’s Discretion

Schedule:

- By October 7 - online submission link emailed to artists *in good standing*
- **October 29 - deadline for all submissions**
- November 12 - acceptances sent out by this date
- **November 29 – delivery of accepted artwork at Glenview, 10:00am-1:00pm**
- December 5, 1:30-3:30pm, *Meet the Artists* Opening at Glenview Mansion (optional)
- **December 9, 7pm on Zoom** - Christine Lashley will discuss her choices of the award-winning pieces. A zoom link will be sent out to members a few days in advance. It will be recorded.
- **January 18: pick up artwork 10:00am-1:00pm**

Online form: register your work *online* with the link that will be emailed to you the first week of October. Submissions of up to 2 pieces per artist for consideration by the judge will be accepted by **Friday, October 29**.

A reminder: members in good standing will be emailed the submission link by October 7. *If you paid your dues for Sept. 1, 2021 – Aug. 31, 2022, you are a member in good standing.*

PLEASE:

if you are unsure of your membership status, please ask us! If you do not receive the link by October 7, contact Patrick Sieg. Please use it to enter your work in the show. Be sure to type in all information carefully and clearly. This information will be used to contact you and to create the virtual show.

Deadline for all entries is Friday, October 29. If your work is accepted into this show, you will be notified by November 12.

Questions regarding the show? Need help or support with the entry process?

Please contact:

Lisa Sieg: jshows@rockvilleartleague.org

Patrick Sieg: president@rockvilleartleague.org

Please read information about our judge

Christine Lashley:

As a contemporary impressionist painter and lifelong nature enthusiast, Christine Lashley gathers most of her ideas by painting outdoors. The art she creates on location or in the studio is about the beauty of a moment held in memory. Her paintings often fuse reality and the abstract, using color and texture to look realistic from afar but dissolve into abstraction up-close. Christine has been involved in the arts all her life, with early years sketching outdoors and watching her mother and grandmother create sculpture. She spent several years in the high fashion world of Europe, and then worked in graphic design and creating murals. She began painting professionally with watercolors but moved to oils in 2009. Her work has won numerous awards, including Best of Show for both landscape and portrait work. Recent awards were the ARC Salon (Plein Air), Bold Brush Award (June 2020), Best Landscape at the 27th Oil Painters of America National Show, and Best of Show at Telluride Plein Air and Bath County Plein Air. Christine's work has been featured in many articles, publications, and media, including two art-instruction DVDs released by Liliedahl, and the cover of *Plein Air Magazine*.

With a BFA from Washington University in St. Louis and prior study at the Sorbonne and Parsons in Paris; Christine continued her art education with workshops from prominent artists including Scott Christensen, with whom she is currently doing an online Beyond the Easel Webinar project (a series of interactive artistic conversations).

Christine has taught US and international workshops for over 20 years and is a Signature Member of: Oil Painters of America (OPA),

Plein Air Painters of the Southeast (PAP-SE), Salmagundi NYC, and the Washington Society of Landscape Painters.

To learn more, visit her website:

<https://www.christinelashley.com>

RAL Juried Members' Spring Show:

Thank you to all the artists who participated in the *RAL Juried Members' Spring Show*. It recently closed on September 12 with our first "Meet the Artists" event of 2021 at the Glenview Mansion Art Gallery. It was wonderful to see those in attendance and to hear so many positive comments about the artwork in the show.

It had been a long time coming and it was pure joy to view such beautiful art in person. Again, we congratulate **Patricia Zannie** on her stunning piece *Sunflowers No. 3* awarded **Best in Show** by our judge Dr. Renee Sandell who chose it for its brightness, beauty, exquisite colors and light, with its reference to our connectiveness and community. A perfect choice!



And to all the artists who had work juried into this show, congratulations as well. Your work is inspiring. How we have appreciated the support our artists offered each other during these unique times of the past 18 months!

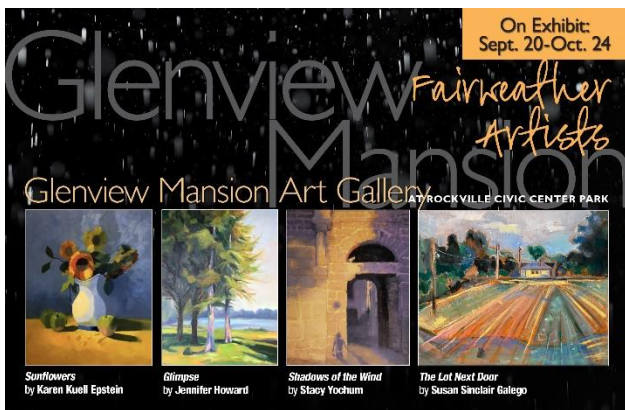
Thank you for sharing your artistry with the community.

NEW! If you were able to view this show in person, you may have noticed the **QR code on each label.**

If you aim your smartphone at this code on the label of the artwork, a link will appear. Click on the link and it will take you to the virtual show on exhibit, highlighting the piece you're interested in. Here you can inquire about the piece and you can also view the entire virtual show. There are also instructions in the gallery for the viewers.

You may also access the shows at Glenview during their exhibition dates virtually on our website as well.

Glenview Mansion Art Gallery Upcoming Shows:



On Exhibit
Sept. 20-Oct. 24, 2021

Fairweather Artists

Meet the Artists from 1:30-3:30 p.m. on Sunday, Oct. 24. The *Fairweather Artists* include: Ellen Broadman, Sarah Clayton Davis, Karen Kuehl Epstein, Susan Sinclair Galego, Jennifer Howard, Lee Ann Howdershell, Ingrid Matuszewski, Lisa Sieg, Patrick Sieg, and Stacy Yochum. Event is free and open to the public.

For information, call 240-314-8681 or 240-314-8660. For recorded directions, call 240-314-5004. *Glenview Mansion Art Gallery* is wheelchair accessible. **Gallery Hours:** 9 a.m.-4:30 p.m. Monday through Friday. Gallery closed on official city holidays.

Glenview Mansion Art Gallery
at Rockville Civic Center Park
603 Edmundson Drive
Rockville, MD 20861

September 20 - October 24: *Fairweather Artists*

Members of the *Fairweather Artists* group applied for this show back in 2019 with the City

of Rockville. After a lengthy hiatus due to the pandemic, it is now finally on exhibit. These artists have known each other, worked together and appreciated each other's art for many years, meeting initially in classes through Glen Echo's Yellow Barn Studio and painting on location in Washington, DC, Maryland and Virginia. During the pandemic the group met frequently via zoom to catch up on local art trends, classes and to offer members art critique points.

Many in the group are also members of the Rockville Art League and other regional art associations.

We invite you to see this beautiful show in person at the Glenview Mansion. Open weekdays from 9am to 4:30 pm.

A "Meet the Artist" event is planned for the exhibit's closing on **October 24**, from 1:30 to 3:30 pm. Please see the show card for details.

October 28 - November 28: *For Love of Glenview Exhibit and 5 Featured RAL Artists*

The RAL *For Love of Glenview* Show that was virtual only back in March will soon be exhibited in person.

Also on exhibit will be the work of 5 RAL Featured Artists who will have individual shows in various rooms in the gallery as well. As award winning RAL artists, they were eligible to apply for solo shows in the conference rooms. Due to the pandemic their shows were put on hold until October. We can't wait to see the work of these fine artists:

- Suzanne Frisbie
- Norda Kittrie
- Susan Dunnell
- Sue Moses
- Stephanie Gustavson

November 29 – January 14: *RAL Juried Members' Winter Show*

Please see the show call in this newsletter.

Thank you for supporting the arts and your fellow artists.

Expand Your Artist Community with “Critique Seek”

Would you like to receive input on your current works-in-progress? Do you have questions or ideas about future projects?

Critique Seek, RAL’s new members-only service, can help you find artists with whom to exchange constructive feedback, conversation, and support. It’s a great way to expand your community of fellow artists.

To sign up, email me at:

Critiques@RockvilleArtLeague.org and I’ll send you a short form to complete. Once you submit your answers, they will be compiled into our list, which you will receive within several days. Check out the list to find one or more members with similar or complementary interests, contact them, and you’re on your way.

To learn more about Critique Seek, check out the article in the June newsletter at:

http://rockvilleartleague.org/newsletters/newsletter_30_10.pdf or email me at:
Critiques@RockvilleArtLeague.org.

I hope you will consider taking advantage of this special opportunity. I look forward to hearing from you!

Paula K. Zeller
Critique Coordinator

Pandemic Paintings & Corona Creations

Larry Levine is a photographer. In his words, “It’s not who I am, but it’s one of the things I deeply enjoy. From the beginning, my wife and I decided it was important to be safe and still find ways to enjoy our lives. We planted a garden on our deck, and I decided to continue photography on a “Close to Home” theme. I went outside to check on our garden one morning in late May of 2020, and was inspired to photograph, ‘Dew on Strawberry Plants.’”



Requirements:

- Please send one image of a piece of art that you have created during the pandemic. (It does not have to be about it, but it could.)
- You may include a brief comment or a title along with your name.
- Please share something you are proud of.
- If selected, your work would appear in the next newsletter.
- Please send to: Susan Dunnell
newsletter@rockvilleartleague.org
and Patrick Sieg
president@rockvilleartleague.org

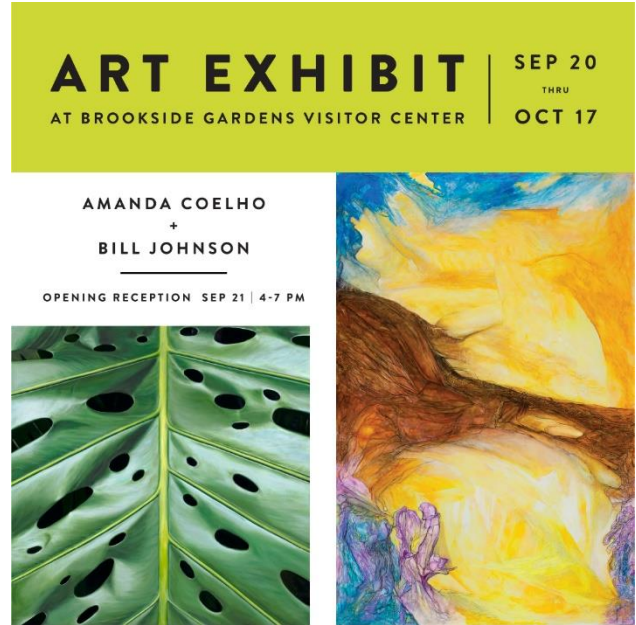
Please note that inclusion in the newsletter does not preclude work from being entered into our Juried Shows.)

MEMBER NEWS

Michele Morgan received the Best of Show award for “Broom” at the Gallery Underground in Arlington, Virginia. The theme of the exhibit was, “Magic of the Ordinary.” (August 2021)



Amanda Coelho and **Bill Johnson** will be co-exhibiting at Brookside Gardens Visitor Center in Wheaton, MD. They are showcasing selected works inspired by nature. The show runs from September 20 through October 17, with an opening reception on September 21 from 4-7 PM.



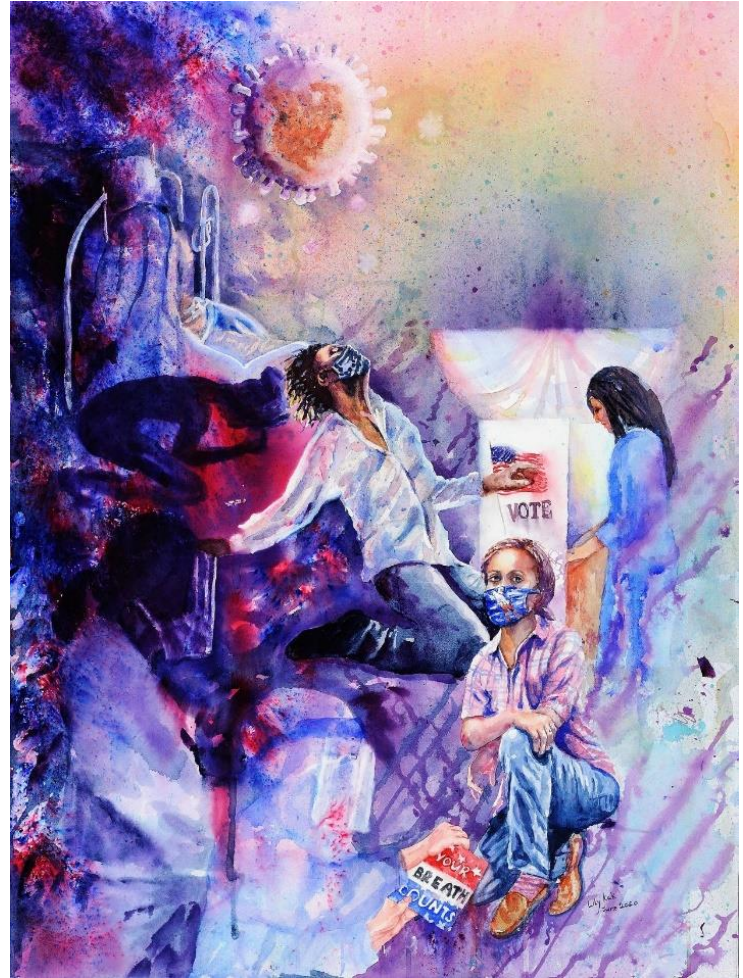
Paula Zeller's oil painting “Searching” was awarded Best Portrait in the 2021 National Oil and Acrylic Painters’ Society (NOAPS) Associate Member Online Exhibition, which can be viewed at <https://www.noaps.org/2021-associate-member-online>. “Searching” is one of five of Paula’s works to appear in the “Touch” juried exhibition, Sept. 8-Oct. 30, at the Strathmore Mansion.



Sally Davies time-lapse film “Pandemic Romance” was a finalist in the Vancouver Independent Film Festival, and also was an

award winner in the Toronto Independent Film Festival of Cift, and it is a nominee for Best Micro Short at the San Francisco Indie Shorts Festival. Sally's time-lapse "Labyrinth of Life" was a finalist in the National Short Film Festival which will be screened at the Film Festival in [March 2022](#). Her 4 minute and 40 second film is difficult to place in one category; "Labyrinth of Life" is a short, experimental, animated, documentary, time-lapse, protest, art film.

Patricia Schocke had two large watercolor paintings in the Glen Echo Art Show held over Labor Day weekend. Also, for general information: there are a number of ongoing art classes at Chesapeake Fine Art at Chesapeakefineartstudio.com. They are held in a large studio just over the Bay Bridge on Kent Island.



Lily Kak's piece, "Black Lives Matter: Vote for Change," received the Park View Gallery Award at Glen Echo Park's 50th Annual Labor Day Art Show. This piece was one of a series of Pandemic Paintings that Lily had done in 2020 which merged with the Black Lives Matter movement at the death of George Floyd.

Two of **Helen Wood**'s pastel paintings were juried into the annual "Art at the Mill" show in Millwood, Virginia: "Rocks of Ages" (shown) and "River Clouds."



The show attracts artists and buyers from more than a dozen states. Around 300 artists display more than 1,000 pieces of art of all descriptions and media. Art at the Mill runs: Saturday, October 2 through Sunday, October 17, 2021. See the website for more information.


<https://www.clarkehistory.org/art-mill.html>


Her painting "Under African Sky" received Honorable Mention (Landscape) at the Montgomery Art Association Paint the Town Labor Day Show 2021.




Paula Zeller's oil painting "The Hard Work" was awarded Second Place in the Strathmore Foundation's 30th Annual Juried Exhibition: TOUCH. Four more of Paula's paintings also are in the show, which runs through October 30 at the Mansion at Strathmore, Wednesday-Saturday, 12-4 p.m.



 **The Compass Atelier**
Art classes for beginners and experienced artists
Special workshops Study Abroad
Home of the revolutionary Master Artist Program



TheCompassAtelier.com TheCompassAtelier@gmail.com



A Work of Art by Debra Halprin
Giclée Printing and Photography Service
Create Fine Art Prints of your Artwork
on Watercolor Paper or Canvas
Mastering the Fine Art of Giclée Printing

HalprinArt.com
301-910-4750

email: Debra@HalprinArt.com
in Rockville, Maryland

NEWSLETTER SUBMISSIONS

Is your art included in a show? Have other news you wish to share with RAL members? Please send your submissions by the **15th** of each month for inclusion in the next newsletter, to: newsletter@rockvilleartleague.org



GLENVIEW MANSION CONFERENCE ROOM SHOWS

As we are emerging from the pandemic, we will follow the safety rules as mandated by the City of Rockville for gatherings which include masking and regulations for receptions. We will pass on to our artists all pertinent information as we know it, including confirmation of dates. We appreciate your patience, flexibility, and support.

Artists displaying work at Glenview will be contacted individually with detailed information about their shows, including the required show agreement. Labels and support to hang the show will be provided. Information about the “Meet the Artists” events will be confirmed.

Glenview Mansion Schedule				
2021				
	ARTISTS	Monday Delivery 10am-1pm	<i>Meet the Artists</i> Event	Pick-up Artwork 10am-1pm
SEPT/OCT	“Fairweather Artists” Exhibit	Sept. 13	Sunday, October 24 1:30-3:30pm	Monday, Oct 25
OCT/NOV	“For Love of Glenview” Exhibit	October 25	Planned for Sunday Nov. 21, 1:30-3:30pm	Monday, Nov 29
OCT/NOV	RAL Artists’ Shows: Suzanne Frisbie Norda Kittrie Susan Dunnell Sue Moses Stephanie Gustavson	October 25	Same as “For Love of Glenview” Exhibit	Monday, Nov 29 10am-1pm
DEC	RAL Juried Winter Show	Monday, Nov 29	Planned for Sunday Dec 5, 1:30-3:30	Planned for Tuesday, Jan 18 10am-1pm

RAL Ongoing Show List

Currently all these venues are closed due to COVID-19 social distancing policies.

Twinbrook Library – 202 Meadow Hall Drive, Rockville, Maryland

Shows for the library run from 1st of the month to the end of the month for 1 month shows.
5 medium to large paintings, Contact person: Christine Lundy, 240-777-0252.

Christine.lundy@montgomerycountymd.gov

Name
Open

From

To

Thomas Farm Community Center – 700 Falls Grove Drive, Rockville, Maryland

12-16 medium to large paintings, Contact person: Melinda Norton (240) 314-8842.
email: mnorton@rockvillemd.gov

Name
Open

From

To

Marilyn J. Praisner Library – 14910 Old Columbia Road, Burtonsville, Maryland

10 small to medium or 5-6 large paintings (10 hanging chains), Contact person: (240) 773-9455, Vera Ramaty

Name
Open

From

To

RAL BOARD OF DIRECTORS

Name	Position	E-mail
Patrick Sieg	<i>President</i>	president@rockvilleartleague.org
Lisa Sieg	<i>1st Vice President</i>	jshows@rockvilleartleague.org
Vacant	<i>2nd Vice President</i>	oshows@rockvilleartleague.org
Vacant	<i>Program Coordinator</i>	programs@rockvilleartleague.org
Lisa Sieg	<i>Volunteer Coordinator</i>	volunteer@rockvilleartleague.org
Vacant	<i>Membership</i>	membership@rockvilleartleague.org
Rob Gale	<i>Treasurer</i>	treasurer@rockvilleartleague.org
Cathy McDermott	<i>Secretary</i>	secretary@rockvilleartleague.org
Susan Dunnell	<i>Newsletter Editor</i>	newsletter@rockvilleartleague.org
Liliane Blom	<i>Liaison Officer</i>	liaison@rockvilleartleague.org
Dave Allen	<i>Publicity/marketing</i>	publicity@rockvilleartleague.org
Eric Goss	<i>Communications</i>	communications@rockvilleartleague.org
Lisa Sieg	<i>Hospitality</i>	hospitality@rockvilleartleague.org
Diane Jeang	<i>Monthly Member Shows</i>	mshows@rockvilleartleague.org
Patria Baranski	<i>Historian</i>	historian@rockvilleartleague.org
Michael Auger	<i>Webmaster</i>	webmaster@rockvilleartleague.org
Eileen Mader	<i>Founder</i>	

Rockville Art League
P.O. Box 4026
Rockville, MD 20850

