



RockvilleArtLeague.org

Vol. XXX No. 9

May 2021

**NEXT MEETING: Virtual Meeting: Sunday, May 16, 2:00PM  
Dr. Renee Sandell will announce the awards for the  
RAL Juried Members' Spring Show. *On Zoom***

## **Message from the President, Patrick Sieg**

Dear Rockville Art League artists,

As I compose this message, we are four days away from the deadline to enter our spring juried show. For past shows we receive more than half the total entries in the last week prior to the deadline and if that holds true this year, we will have well over 200 entries. The ones I have seen so far are simply beautiful.

We have asked that our judge, Renee Sandell, to jury in approximately 120 pieces so competition for a place in the show will be high. And that makes for an extremely beautiful exhibit.

We will communicate to the accepted artists on or before May 3<sup>rd</sup> and I am much looking forward to our walk through with Renee (virtually) on Sunday, May 16. Awards will be announced in that Zoom as well.

The application we are using for our entries (and later the virtual display) is ArtworkArchive and most artists found the process straight forward. Our "For Love of Glenview" show was hosted on this platform and that show was extremely well organized and displayed. It is worth an additional look and the show's link is on the

RAL website. "For Love of Glenview" also netted a number of sales...always a good thing.

We have been operating under a pandemic shroud for over a year and as we get vaccinated the world will begin to return to normal. And normal has changed. I am already thinking about how some things have actually improved this last year and there are elements of life that I hope will carry into the new normal.

- Less traffic
- An appreciation of what we have and the luxury of time to see things differently
- A creative windfall for many of us as artists

I recently heard a quote that resonated with me...

"Technology continues to improve and invade my life."

More apps, more Zooms, more of everything virtual.

We had to operate differently and use new tools. It was frustrating at times, but the improvements were real.

I hope we will be selective about what we bring forward from the pre-pandemic time and supplement those things with the new that we have embraced in the last 13 months.

And I do much look forward to seeing people in person and getting out and about.

I am still thinking about the presentation artist Katherine Nelson shared with us on April 1<sup>st</sup>. We have had many excellent presentations and talks over the years and our virtual ones this year have been especially good. And technology has allowed them to be viewed by many members. Katherine's talk was memorable to me because it showed how she has evolved as an artist and how every different part of her life instructed her work and her perspective. Life is like that. If we take the time to consider how everything we do and experience can and should be manifest in our creations. We have seen and lived through much this last year and I see how it has influenced our art. This is another reason why I am so looking forward to this year's juried show.



It doesn't mean that our art should show trauma or masks or distance (and if some do, then great). Perhaps experimentation or a renewed focus on our environment or an enhanced appreciation of beauty will show in our entries.

Having seen some of the work I can frankly say that our work has grown to be most beautiful and moving.

Artist and educator Robert Henri said, "There is joy in the pursuit of anything."

It is clear that we have pursued creativity, excellence and beauty in your art this pandemic year.

Thank you, artists, your work is a joy to behold.

Please stay tuned for additional information about our show in the coming weeks. Our juried show leader, Lisa Sieg, has been working with our judge and pulling all the entries together. She does an outstanding job with communications and publicity regarding these shows, and she will be reaching out to all.

Patrick Sieg  
President

## Rockville Art League 2021 Speaker Series

**Sunday, May 16, 2:00PM. Dr. Renee Sandell will announce the awards for the RAL Juried Members' Spring Show on Zoom.**

**Thursday, June 3, 7—8:30 PM: "The Art of Critiquing Fine Art" by Glen Kessler on Zoom**

**Glen Kessler**, renowned artist, teacher, and founder of The Compass Atelier, will share his techniques and tips for critiquing art during a special Zoom presentation on June 3, at 7 PM. You will come away with a new understanding of what works and what doesn't – not only in others' artworks, but in your own as well.

To demonstrate his process, Glen will critique some works by RAL members. If you would like to participate, please send a photo of your piece to [PaulaKZellerArt@gmail.com](mailto:PaulaKZellerArt@gmail.com) by **May 24**.

Glen will help us kick off a new RAL initiative: **Critique Seek**, a way to bring interested members

together in small (2+) critique groups. More info to come in your inbox and the June newsletter!

## **RAL Juried Members' Spring Show VIRTUAL EXHIBIT**

Opens  
**MAY 16, 2021**  
Awards on Zoom: 2pm

**Call for entries:** deadline Monday, April 19.  
*Online registrations only.*

**Judge:** We are honored that Dr. Renee Sandell will jury our Rockville Art League Juried Members' Spring Show. With over 45 years of art teaching experience in classrooms and museums and other venues, Renee is founding director of the expeditionary, museum based SummerVision DC Program, which she designed and has delivered for the National Art Education Association (NAEA) since 2010. Previously Director/Professor of Art Education at George Mason University (2004-2014) and Professor of Art Education at Maryland Institute College of Art (1990-2003), in 1980, Sandell was a Fellow at the National Endowment for the Arts. Co-author of two books on gender issues (and a forthcoming book *Real Lives 21: Stories Showcasing the Stories of Art Educators and Contemporary Learning*), Sandell has published numerous articles, book chapters and art curricula. To learn more about Renee's teaching, visit her website

[www.visualfitness4all.com](http://www.visualfitness4all.com)

Her artistic installations of ink and water-media markings explore the human condition in time, space, and place. Her painted "Silk Meditations" reveal positive energies contained in human virtues, reflecting sensory states of consciousness through spiritual expression. Immersed in universal gratitude, these works become meditative mindscapes of visual affirmations needed in our turbulent times. To learn more, visit Renee's art website [www.reneesandellart.com](http://www.reneesandellart.com) She is offering a course for Smithsonian Associates that starts April 19:

<https://smithsonianassociates.org/ticketing/tickets/seeing-more-art-virtues-and-our-lives>

Dr. Sandell will announce the award-winning pieces on **Sunday, May 16 at 2:00pm on Zoom**. (A zoom link will be emailed out to members a few days prior.) The entire virtual show will be made available on our website and a recording of this zoom will be sent out to members afterwards.

We are using an app called Artwork Archive for all submissions to this show. Please read through all information below carefully.

**Call Deadline:** *Members in good standing* may submit **up to 2 pieces of work** to be juried for this show now through April 19. No submissions will be accepted after the April 19 deadline. If your work is accepted into this show, you will be informed by May 3. Please *read all the information below* carefully before submitting.

**Entry Fee:** A \$10 show fee will be collected from *accepted* artists (not per piece).

**Eligibility and rules:** The following rules apply for all works entered. Each member **in good standing** may enter up to two pieces.

- **Each member *in good standing* has been sent a unique entry link and a password.** Please save the link and use it to submit your work for the *RAL Juried Members' Spring Show*. When you click the link sent to you, you will be prompted for your password. Please type it in exactly. It is case sensitive. No extra spaces. If you have not received your link, please contact Patrick Sieg [president@rockvilleartleague.org](mailto:president@rockvilleartleague.org)
- For each submission you will be required to submit an image (jpeg or jpg.) of your piece on the online form. The mat or the frame (or glass, glare, wall, etc.) should NOT be visible in the image you submit. Just the artwork itself.

- Although this is planned as a virtual show, your piece should be ready for hanging, gallery-wrapped or framed or professionally finished, securely wired.
- The maximum measurement of any framed side is **48 inches**.
- The **entries may not have been exhibited** previously in a **RAL Juried Members' Show**.
- You may submit up to 2 pieces *to be juried* for this show. As always, let it be your best quality work and something that speaks to you and others.
- RAL retains the right to determine suitability of work for entry in this show.
- Work is to be submitted with the online submission link emailed to you. *A submission of the form constitutes that you agree to the terms of the show agreement stated below.*
- **Sales:** As the Spring Juried Member's Show is virtual, there will be no commission to the City of Rockville. Artists may handle their own sales and any inquiries sent to the Rockville Art League juried show coordinator or the president will be forwarded to the artist. (If there is a safe opportunity for an exhibition at Glenview Mansion, then instructions would be sent out to accepted artists. And in the event of an actual show, the *City of Rockville* handles the sales and a 20% commission of works sold would be donated to the *City of Rockville*.)

#### **Categories of Artwork:**

- Oils and acrylics
- Watercolors
- Pastels, drawings, and hand-pulled prints
- Mixed media, collage, experimental, and original computer-generated art
- Photographs
- Sculpture and ceramics

#### **Awards:**

- Best in Show (cash prize)
- First, Second, Third in all categories (cash prizes)
- Honorable Mention at Judge's Discretion

#### **Schedule:**

- Online entry links were emailed to artists the first week of March.
- **April 19 - deadline for all submissions**
- May 3 - acceptances sent out by this date
- May 16 - presentation of award-winning pieces on Zoom at 2:00pm. A zoom link will be sent out to members a few days in advance.

**Online form:** register your work *online* using the link and password that was sent to you. Detailed instructions below. Submissions of up to 2 pieces per artist for consideration by the judge will be accepted by **Monday, April 19**. **The Show Agreement:** a submission of the form *constitutes that you agree* to the terms of the show agreement.

“I agree to the rules of the show as presented in the show call, that my entries are my original works and have not been accepted into a previous Rockville Art League Juried Members' Show, and I will not hold the Rockville Art League, Glenview Mansion or the City of Rockville responsible for any possible loss or damage to my entries. As with any show, I understand that all reasonable care will be taken in the handling of entries. I give RAL, Glenview Mansion, and the City of Rockville permission to use images of my artwork and publish them as appropriate. I acknowledge a commitment to donate 20% of the sale price of my work, if sold during a physical show at Glenview to the City of Rockville. If it remains virtual only, there will be no commission due.”

#### **Instructions for online form:**

**When you submit your work to be juried, please complete the following fields.** Other fields are optional and will not be used in the exhibit.

- **Artwork title:** as you would like to see it labeled in the exhibit.

- **Medium:** please choose one from the categories that comes up or you may type your own. Please reference the 6 categories of artwork above.
- **Market Price:** this is the sales price for your piece, or you may mark it as NFS (not for sale). (Ignore “wholesale price.”)
- **Image:** to enter your work in this show you will need to either drag in or “choose files,” for your artwork image (jpg. or jpeg.) Please make sure your image is clear and only shows your artwork (no glare, frames, furniture, etc.)
- **Dimensions:** in inches (“D” is for sculpture, 3-dimensional work).  
After completing the above information, please click **“Submit Piece”** at the bottom. You will get a box that asks, if you are sure, and if so, please click **“OK”**.

After submitting your entry, a screen will show recent uploads and then prompt you to “add new work.” If you would like to submit a second piece, please do so using the same process. If all pieces (and you’re allowed up to 2 works for this virtual exhibit) have been submitted, then choose “sign out.”

\*If you will enter 2 pieces, then submitting both at the same time is not required. You may go in later using your link and password to submit your second piece. The screen will show the work that you have already submitted.

**A reminder:** members in good standing have been emailed their submission links. *If you paid your dues for the Sept. 1, 2020 – Aug. 31, 2021, you are a member in good standing.* \*If you are unsure of your membership status, please ask. **If you have not received the link**, please contact Patrick Sieg. Please use it to enter your work in the show. Be sure to type in all information carefully and clearly. This information will be used to contact you and to create the virtual show.

Deadline for all entries is Monday, April 19.

If your work is accepted into this show, you will be notified by May 3.

Questions regarding the show? Need help or support with the entry process?

Please contact:

Lisa Sieg: [jshows@rockvilleartleague.org](mailto:jshows@rockvilleartleague.org)

Patrick Sieg: [president@rockvilleartleague.org](mailto:president@rockvilleartleague.org)

## **Pandemic Paintings & Corona Creations**

**Jim MacArthur** had planned to do a lively DC street scene, plein air. The streets were empty. The air was “corona” polluted. So he came away with “Covid-19”.



**Lisa Sieg** photographed the cherry blossoms, titled, “Retreat in the Orchard,” in her neighborhood.



**Patrick Sieg’s** painting, “See the Light, Be the Light,” was inspired by Amanda Gorman’s poem at the inauguration as was her colorful outfit and her hand gestures. Pat appreciated that her audience wore masks that prevented them from interrupting (and helped keep everyone safe).



### Requirements:

- Please send one image of a piece of art that you have created during the pandemic. (It does not have to be about it, but it could.)
- You may include a brief comment or a title along with your name.
- Please share something you are proud of.
- If selected, your work would appear in the next newsletter.
- Please send to: Susan Dunnell  
newsletter@rockvilleartleague.org  
and Patrick Sieg  
president@rockvilleartleague.org

(Note: inclusion in the newsletter does not preclude work from being entered into our Juried Shows.)

### MEMBER NEWS



**Paula Zeller** is participating in Glave Kocen’s virtual exhibition, “Put a Bird on It.” Her two oil paintings – “Aloft” and “Checking In” – along with other avian-themed 2- and 3-D works, can be viewed at <https://glavekocengallery.com/show/glave-kocen-consulting-put-a-bird-on-it> through May 1.



The Woman's Club of Chevy Chase presents its 45th Annual Community Art Show and Sale VIRTUALLY! The 5-week, virtual show which supports scholarships for Montgomery College art students goes live starting Friday, April 9th and runs through Sunday, May 16th, 2021. The show, with 100 artists and over 300 pieces of artwork in 9 categories will be judged by Jack Rasmussen, Director, Curator, American University Museum at the Katzen Arts Center. Learn more by going to the Woman's Club of Chevy Chase website: [wccmaryland.org](http://wccmaryland.org) Many of our members have artwork included in this show.

The Woman's Club of Chevy Chase presents

ACRYLICS  
minis  
PORTRAITS  
Pastels  
Mixed Media  
Oils  
prints/  
drawings  
Watercolors  
Photography

**Virtual ART SHOW & SALE**  
April 9-May 16

Join us for our 45th Annual Community Art Show and Sale, supporting scholarships for Montgomery College art students.

Judged by Jack Rasmussen, Director and Curator, American University Museum at the Katzen Arts Center, this exciting show features 94 local artists presenting 300 original works of art! Do not miss this show and sale! **Learn more by going to [wccmaryland.org](http://wccmaryland.org)**

[wccmaryland.org](http://wccmaryland.org)  
The Woman's Club of Chevy Chase, supporting women and families through community service



**Howard Clark's** photo of a "Sunrise on the Blue Ridge Parkway" was awarded an Honorable Mention in the 2021 Annual Art Show and Sale by the Woman's Club of Chevy Chase. His second entry, "Foggy Blossoms," was sold to a young family in the neighborhood.



**Freddi Weiner, Photos By Freddi,** is very excited that her photo "Yellow Eyes and Blue Skies" will be featured at the Gaithersburg Arts Barn "Birds of a Feather" exhibit that will take place March 22-May 2. The show will be online and in person by appointment through the City of Gaithersburg at 311 Kent Square Road. Thank you to the Arts Barn and the City of Gaithersburg for continuing to hold the show in these difficult times.

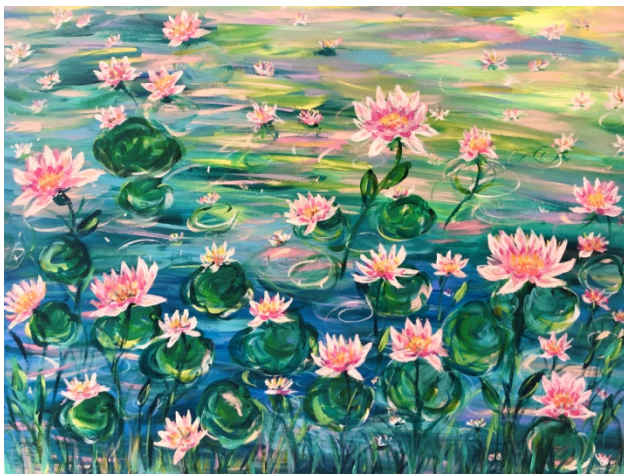


**Freddi Weiner** has several pieces in the 45th Annual Woman's Club of Chevy Chase Community Art Show and Sale. Included are: Photography- "Cherry Creek"; Acrylic - "Marsh at Sunset" and "Waterlily Pond in Pastels"; and Watercolor- "White Birch Reflections".




Howard's image of a "Baby Osprey" has been selected for inclusion in a group show called "Birds of a Feather" at the Arts Barn in Gaithersburg. That walk-in show opens on Friday, March 26, and continues until Sunday, May 2.


### CALL TO WOMEN ARTISTS



**Deadline: May 15, 2021.** The Power Conference 2021—Women's Professional Development Conference, invites women artists from anywhere in the United States to apply for the 2021 Women Artists Online Showcase on The Power Conference website September 12-30. The virtual conference takes place September 13-14. In past years, this in-person conference was held in Bethesda, MD, and attracted 500-700 women in business. This year, it will be a virtual conference open to participants around the country. The conference organizers have added an educational track on the business of creative arts. Should you wish to attend the online conference, your non-refundable \$35 entry fee will be applied toward the conference registration fee (even if your artwork is not accepted). For details, visit: <https://www.thepowerconference.com/women-artist-showcase/> For questions, contact [artshow@thepowerconference.com](mailto:artshow@thepowerconference.com)




 **The Compass Atelier**  
Art classes for beginners and experienced artists  
Special workshops Study Abroad  
Home of the revolutionary Master Artist Program



TheCompassAtelier.com TheCompassAtelier@gmail.com

## NEWSLETTER SUBMISSIONS

Is your art included in a show? Have other news you wish to share with RAL members? Please send your submissions by the **15<sup>th</sup>** of each month for inclusion in the next newsletter, to: [newsletter@rockvilleartleague.org](mailto:newsletter@rockvilleartleague.org)



**A Work of Art** by Debra Halprin  
Giclée Printing and Photography Service  
Create Fine Art Prints of your Artwork  
on Watercolor Paper or Canvas

[Mastering the Fine Art of Giclée Printing](#)

**HalprinArt.com**  
301-910-4750

email: [Debra@HalprinArt.com](mailto:Debra@HalprinArt.com)  
in Rockville, Maryland

### **GLENVIEW MANSION CONFERENCE ROOM SHOWS**

Please note: Glenview Mansion will remain closed until further notice and all shows scheduled for the 2021 winter/spring have been cancelled - and will be rescheduled once Glenview can safely open up again.

Structure of Monthly Shows: Conference Room Shows run concurrently with Main Gallery Shows, opening and closing on the same dates. Reception is same date and time as Main Gallery Shows.



**RAL Ongoing Show List**

Currently all these venues are closed due to COVID-19 social distancing policies.

**Twinbrook Library – 202 Meadow Hall Drive, Rockville, Maryland**

Shows for the library run from 1<sup>st</sup> of the month to the end of the month for 1 month shows.  
5 medium to large paintings, Contact person: Christine Lundy, 240-777-0252.  
[Christine.lundy@montgomerycountymd.gov](mailto:Christine.lundy@montgomerycountymd.gov)

<b><u>Name</u></b>	<b><u>From</u></b>	<b><u>To</u></b>
Open		

**Thomas Farm Community Center – 700 Falls Grove Drive, Rockville, Maryland**

12-16 medium to large paintings, Contact person: Melinda Norton (240) 314-8842.  
email: [mnorton@rockvillemd.gov](mailto:mnorton@rockvillemd.gov)

<b><u>Name</u></b>	<b><u>From</u></b>	<b><u>To</u></b>
Open		

**Marilyn J. Praisner Library – 14910 Old Columbia Road, Burtonsville, Maryland**

10 small to medium or 5-6 large paintings (10 hanging chains), Contact person: (240) 773-9455, Vera Ramaty

<b><u>Name</u></b>	<b><u>From</u></b>	<b><u>To</u></b>
Open		

## RAL BOARD OF DIRECTORS

<b>Name</b>	<b>Position</b>	<b>E-mail</b>
Patrick Sieg	<i>President</i>	<a href="mailto:president@rockvilleartleague.org">president@rockvilleartleague.org</a>
Lisa Sieg	<i>1<sup>st</sup> Vice President</i>	<a href="mailto:jshows@rockvilleartleague.org">jshows@rockvilleartleague.org</a>
Vacant	<i>2<sup>nd</sup> Vice President</i>	<a href="mailto:oshows@rockvilleartleague.org">oshows@rockvilleartleague.org</a>
Vacant	<i>Program Coordinator</i>	<a href="mailto:programs@rockvilleartleague.org">programs@rockvilleartleague.org</a>
Lisa Sieg	<i>Volunteer Coordinator</i>	<a href="mailto:volunteer@rockvilleartleague.org">volunteer@rockvilleartleague.org</a>
Vacant	<i>Membership</i>	<a href="mailto:membership@rockvilleartleague.org">membership@rockvilleartleague.org</a>
Rob Gale	<i>Treasurer</i>	<a href="mailto:treasurer@rockvilleartleague.org">treasurer@rockvilleartleague.org</a>
Cathy McDermott	<i>Secretary</i>	<a href="mailto:secretary@rockvilleartleague.org">secretary@rockvilleartleague.org</a>
Susan Dunnell	<i>Newsletter Editor</i>	<a href="mailto:newsletter@rockvilleartleague.org">newsletter@rockvilleartleague.org</a>
Liliane Blom	<i>Liaison Officer</i>	<a href="mailto:liaison@rockvilleartleague.org">liaison@rockvilleartleague.org</a>
Dave Allen	<i>Publicity/marketing</i>	<a href="mailto:publicity@rockvilleartleague.org">publicity@rockvilleartleague.org</a>
Eric Goss	<i>Communications</i>	<a href="mailto:communications@rockvilleartleague.org">communications@rockvilleartleague.org</a>
Lisa Sieg	<i>Hospitality</i>	<a href="mailto:hospitality@rockvilleartleague.org">hospitality@rockvilleartleague.org</a>
Diane Jeang	<i>Monthly Member Shows</i>	<a href="mailto:mshows@rockvilleartleague.org">mshows@rockvilleartleague.org</a>
Patria Baranski	<i>Historian</i>	<a href="mailto:historian@rockvilleartleague.org">historian@rockvilleartleague.org</a>
Michael Auger	<i>Webmaster</i>	<a href="mailto:webmaster@rockvilleartleague.org">webmaster@rockvilleartleague.org</a>
Eileen Mader	<i>Founder</i>	

Rockville Art League  
P.O. Box 4026  
Rockville, MD 20850

