



RockvilleArtLeague.org

Vol. XXX No. 6

February 2021

**NEXT MEETING: Virtual Meeting: February 4, 7:00PM
Penny Kritt on Creating Compositions**

Message from the President, Patrick Sieg

Dear Rockville Art League artists,

We have endured much these last 12 months. The 2020 theme I have heard expressed most often is that no one will miss it...and good riddance.

The pandemic, social distancing, financial uncertainty, hoarding of paper products and ever-present politics has cast a dark shadow over all of us.

However, as Maya Angelou said, “Light and shadow are opposite sides of the same coin. We can illuminate our paths or darken our way. It is a matter of choice.”

We artists have mostly chosen the light.

And I am much looking forward to 2021 and we all want and need a change.

As with anything, creative or otherwise, change is inevitable. But while change is inevitable it is up to us to use it to learn new things and grow as artists and people.

Perhaps the chaos of last year will be a catalyst for the change. While 2021 is off with a

concerning and difficult start, I am optimistic that it will be a better year.



Regarding illumination and change, the Rockville Art League moved forward and embraced virtual last year, and we can add to that momentum in 2021. We used Zoom, YouTube and other technology to connect from a safe distance. We moved our exhibits to our website and used PowerPoint to show our work.

Our speakers reached out virtually and shared insights that were new for many of us.

Our league will use a new application this year to support our shows and we hope that, when safe, our exhibits will be both virtual and in person.

I have used an application named Artwork Archive to help me manage my personal art practice. I have learned that this same system has an organizational level subscription that promises to assist RAL by integrating the art submission and exhibit processes in a seamless manner. We will move forward with Artwork Archive in 2021 and I am excited about its potential.

More instructions on how each member will use this system will be shared soon.

Our first opportunity to use this new application will be for a show that we are planning for late winter titled "For Love of Glenview." The City of Rockville reached out to us asking if our league would be interested in a virtual show focused on the mansion, its grounds and the gallery. More details are included later in the newsletter.

Speaking of exhibits, our beautiful winter juried members show is available to view at least through the end of January. It is worth a second (or tenth) view and please invite your friends, family and art loving friends to take a look. It is beautiful and several pieces have already been sold. Please find a link to this show on the RAL website.

We have selected speakers for our winter months.

- Penny Kritt has been a columnist in our newsletter for many years and will speak to us via Zoom in early February. Her topic will be composition and where ideas come from.
- In March we will be hearing from artist and educator Christie Lashley who will speak with

us on the use of warm and cool colors. Christine is an award winning plein air artist who has an international following.

- In April we will welcome back our winter show judge Katherine Nelson for a talk on creating artwork with charcoal. I'm sure many of you were impressed with her judge's comments and charcoal drawing is her passion.

I made a personal resolution this year to embrace new technology...new for me anyway. To that end I am planning to learn the digital art program Procreate. It promises to combine the accessibility of tablets, digital drawing and image editing.

I have just purchased a smart pencil for my iPad and will be adding Procreate to my tablet's applications

Fortunately, I will have help learning this application as Penny Kritt is offering a class on Procreate to RAL members for a modest fee. She has been using this application in her practice for many years and will give us a taste of that technology when she speaks in February. More details to come later if you would like to join the class and keep me company.

Thank you all for supporting our art league through your membership, participation in our exhibits and presentations and for a few of you, service on our board (and there are positions still available and please contact me).

Finally, give every day the chance to become the most creative and beautiful day of your life.

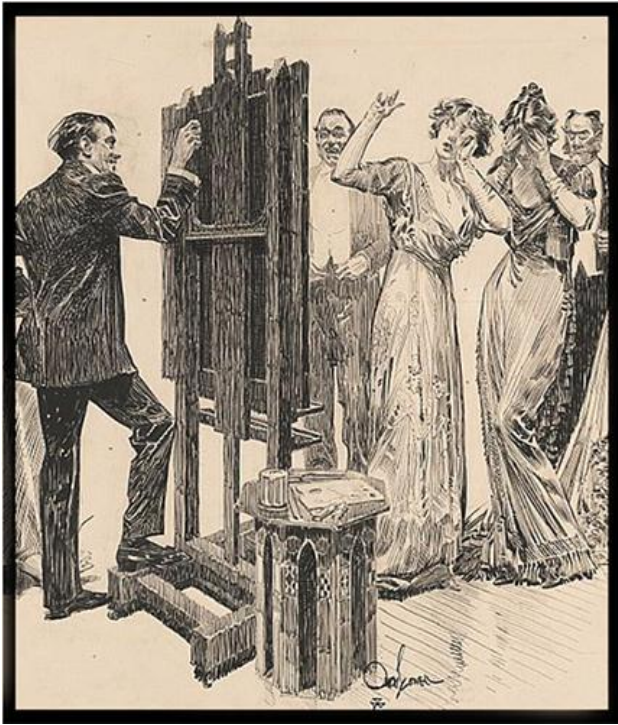
Sincerely,

Patrick Sieg
President

Rockville Art League 2021 Speaker Series

February 4: Penny Kritt - Creating Compositions, 7pm on Zoom

Penny Kritt will offer a thought-provoking discussion about creating compositions. She'll share easy ways to find inspiration and how to get past roadblocks that pop up. And learn how to tell when a piece is done so it doesn't get overworked. Mark your calendars: you won't want to miss this riveting presentation. (*A zoom invitation will be sent out to members a few days prior*).



Have you considered doing digital art but don't know where to start? Or perhaps you are already doing it, but you'd like to expand your skill set. All of the basic functions are the same regardless of what app you use. And they run on PCs, laptops, tablets and even on smart phones.

She will also give a brief overview of the popular **iPad** artistic app "ProCreate" (that only costs \$10). Penny will briefly discuss this exciting creative tool loved by creative professionals and aspiring artists alike. She plans to offer a 3-part workshop on ProCreate to our members at a very reasonable

rate in Feb/March. \$45 for three 90-minute interactive classes. Details forthcoming.

March: Christine Lashley – A Perspective on Warm and Cool Colors

April: Katherine Nelson – A Drawing Demo and Presentation on Zoom

Artist Show Opportunities for RAL Members:
March 2021: *For Love of Glenview* – Please see details in this newsletter.
May 2021: RAL Juried Members' Spring Show. Show call and details forthcoming in next newsletter.

Virtual Show

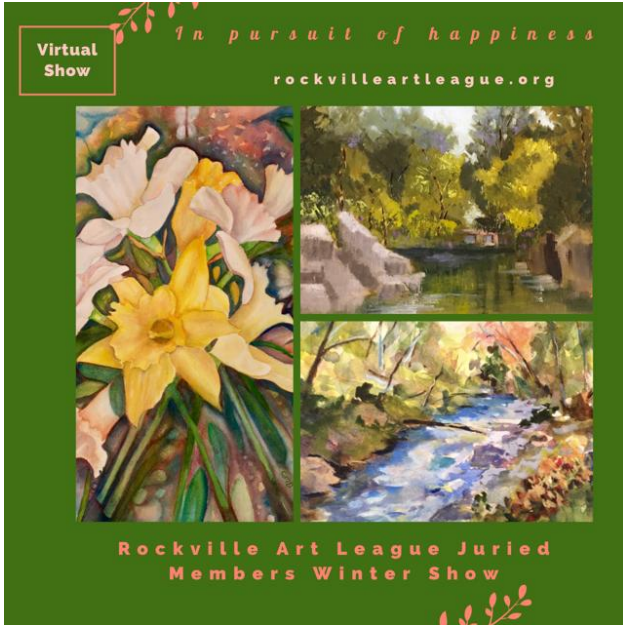
Rockville Art League Juried
Members' Winter Show

On Our Website

rockvilleartleague.org

Portions of artwork by Jasmin Smith, Robert LeMar, Sandra Zisman and Susan Sinclair Galego

The RAL Juried Members' Winter Show is virtual on our website and is one incredible show! Please continue to share it with your friends, family and colleagues. What are your favorite pieces?



Portions of artwork by Cathy McDermott, Susan Schellberg, and Penny Smith



Rockville Art League and the City of Rockville are hosting a *virtual exhibition*:

For Love of Glenview
March 2021

Who amongst you is missing Glenview Mansion?

Now is the time to show your love!

Create a work of art to showcase **Glenview Mansion, the Glenview Mansion Art Gallery, the grounds, the gardens**, or an aspect of any of these.

RAL members in good standing may submit up to 3 pieces of art for consideration for a virtual show to show our love for Glenview Mansion and the Rockville Civic Center.

The work may be newly created but you may also submit a piece you have created *pre-pandemic**in the following mediums:

- oils/acrylics
- watercolors
- drawings, pastels, hand-pulled prints
- mixed media, collage, experimental
- photography
- sculpture

*It also may have been exhibited in a prior show.

A link with instructions allowing you to enter the show **will be emailed to each member** in good standing. Please use the link to enter each of your pieces. Works can be for sale or NFS. No show fee.



Deadline for submissions:

Friday, February 26.

Prizes of recognition of 1st, 2nd and 3rd place will be awarded by the City of Rockville.

The virtual show and the award-winning pieces will be shown on the RAL website as well as the City of Rockville's.

And once the City of Rockville allows for the safe reopening, we will resume our monthly meetings and exhibitions at Glenview Mansion, a place near and dear to the heart of RAL and

the community. A truly beautiful venue - as stunning as the art.

Pandemic Paintings & Corona Creations

“Games Board,” mixed media, 18x18 by **Elizabeth Steel**.



“Two Small Frogs,” by **Susan Dunnell**.



A visit to Brookside Gardens, seeing others hidden by masks (a necessity of our time) added to the isolation of the current times; “COVID-19 Mona Lisa,” by **Alexandra Treadaway-Hoare**.



Richard Fisher's pastel, “Catching a Wave,” is from his memory of pre-covid travel to the Basque region of Spain where his son takes

refuge daily surfing the waves during the pandemic.

Requirements:

- Please send one image of a piece of art that you have created during the pandemic. (It does not have to be about it, but it could.)
- You may include a brief comment or a title along with your name.
- Please share something you are proud of.
- If selected, your work would appear in the next newsletter.
- Please send to: Susan Dunnell
newsletter@rockvilleartleague.org
and Patrick Sieg
president@rockvilleartleague.org

(Note: inclusion in the newsletter does not preclude work from being entered into our Juried Shows.)

MEMBER NEWS

Elizabeth Steel is delighted to report that her 20x16 mixed media piece, “Connect or Collide,” has been accepted into the Winter Member Show of the Maryland Federation of Art. Juried by Erin Lehman, the exhibition will be held at Circle Gallery in Annapolis January 6-30, 2021. An online Zoom reception will be scheduled.



Michael Kuchinsky has two pieces in the 2021 Cumberland Valley Photographers Exhibition on display Jan. 31- April 4, 2021.



“Elsewhere” is one of three paintings **Paula Zeller** is showing in Glave Kocen’s virtual exhibition, **SIZE DOESN’T MATTER**. Although Glave Kocen no longer has a physical gallery, they are doing periodic online and pop-up shows. This show runs through January at <https://glavekocengallery.com/>



A Work of Art by Debra Halprin
Giclée Printing and Photography Service
Create Fine Art Prints of your Artwork
on Watercolor Paper or Canvas

Mastering the Fine Art of Giclée Printing

HalprinArt.com
301-910-4750

email: Debra@HalprinArt.com
in Rockville, Maryland

Kritt Studio Classes


Penny Kritt’s
Classes you can take at home

Both traditional and digital courses are offered for all levels of students.
www.pennykritt.com/online-classes.html


For more info, call Penny at
301/989-1799

NEWSLETTER SUBMISSIONS

Is your art included in a show? Have other news you wish to share with RAL members? Please send your submissions by the **15th** of each month for inclusion in the next newsletter, to: newsletter@rockvilleartleague.org



The Compass Atelier
Art classes for beginners and experienced artists
Special workshops Study Abroad
Home of the revolutionary Master Artist Program



TheCompassAtelier.com TheCompassAtelier@gmail.com

GLENVIEW MANSION CONFERENCE ROOM SHOWS

Monday delivery and hanging: 12PM–2PM & 5-7PM/Sunday Gallery Opening: 1:30—3:30PM
 Monday Pick up: before 11AM

Glenview Mansion Schedule				
2021				
	Member(s)	Mon &/or Tues Deliver hours	Sunday Gallery Opening 1:30-3:30	Monday Pick-up
JAN				
FEB				
MARCH				

***Please note:** Glenview Mansion will remain closed until further notice and all shows scheduled for the 2020 fall season have been cancelled - and will be rescheduled once Glenview can safely open up again.

Structure of Monthly Shows: Conference Room Shows run concurrently with Main Galllery Shows, opening and closing on the same dates. Reception is same date and time as Main Gallery Shows.

Opening Receptions: At least one platter of finger foods (cookies, crackers/cheese, veggies/dip) should be supplied by the RAL artist on the day of the opening reception. Cups/napkins/water is provided by the City of Rockville for opening receptions. The Mansion will be open 45 min. prior to reception for the artists to set up on the day of the opening reception. Artists in rooms 5 and 6 are responsible for hanging their shows but will have assistance on site as needed.



RAL Ongoing Show List

Currently all these venues are closed due to COVID-19 social distancing policies.

Twinbrook Library – 202 Meadow Hall Drive, Rockville, Maryland

Shows for the library run from 1st of the month to the end of the month for 1 month shows.
5 medium to large paintings, Contact person: Christine Lundy, 240-777-0252.
Christine.lundy@montgomerycountymd.gov

<u>Name</u>	<u>From</u>	<u>To</u>
Open		

Thomas Farm Community Center – 700 Falls Grove Drive, Rockville, Maryland

12-16 medium to large paintings, Contact person: Melinda Norton (240) 314-8842.
email: mnorton@rockvillemd.gov

<u>Name</u>	<u>From</u>	<u>To</u>
Open		

Marilyn J. Praisner Library – 14910 Old Columbia Road, Burtonsville, Maryland

10 small to medium or 5-6 large paintings (10 hanging chains), Contact person: (240) 773-9455, Vera Ramaty

<u>Name</u>	<u>From</u>	<u>To</u>
Open		

RAL BOARD OF DIRECTORS

Name	Position	E-mail
Patrick Sieg	<i>President</i>	president@rockvilleartleague.org
Lisa Sieg	<i>1st Vice President</i>	jshows@rockvilleartleague.org
Vacant	<i>2nd Vice President</i>	oshows@rockvilleartleague.org
Vacant	<i>Program Coordinator</i>	programs@rockvilleartleague.org
Lisa Sieg	<i>Volunteer Coordinator</i>	volunteer@rockvilleartleague.org
Vacant	<i>Membership</i>	membership@rockvilleartleague.org
Rob Gale	<i>Treasurer</i>	treasurer@rockvilleartleague.org
Cathy McDermott	<i>Secretary</i>	secretary@rockvilleartleague.org
Susan Dunnell	<i>Newsletter Editor</i>	newsletter@rockvilleartleague.org
Liliane Blom	<i>Liaison Officer</i>	liaison@rockvilleartleague.org
Dave Allen	<i>Publicity/marketing</i>	publicity@rockvilleartleague.org
Eric Goss	<i>Communications</i>	communications@rockvilleartleague.org
Lisa Sieg	<i>Hospitality</i>	hospitality@rockvilleartleague.org
Diane Jeang	<i>Monthly Member Shows</i>	mshows@rockvilleartleague.org
Patria Baranski	<i>Historian</i>	historian@rockvilleartleague.org
Michael Auger	<i>Webmaster</i>	webmaster@rockvilleartleague.org
Eileen Mader	<i>Founder</i>	

Rockville Art League
P.O. Box 4026
Rockville, MD 20850

