



RockvilleArtLeague.org

Vol. XXX No. 5

January 2021

**NEXT MEETING: Virtual Meeting: February 4, 7:00PM  
Penny Kritt on Creating Compositions**

### **Message from the President, Patrick Sieg**

Dear Rockville Art League artists,

Happy holidays to you all.

I keep hearing how very happy people are to see 2020 come to an end.

I understand. Certainly, we all look forward to the pandemic becoming history and a less political year in 2021.

But let's not overlook some of the good we have seen and experienced in 2020.

- Most of us have done difficult things to keep healthy and help our friends and family stay safe, as unpleasant as wearing masks and social distancing has been.
- We have used our creativity and unique perspectives to see beauty in new places and in different ways this year.
- We have supported each other through art and that is to be celebrated.

As we look back in 2020, our art league has much to be proud of...

- Members re-upped and stepped up to support our group. We had new members join us and nearly all of our members from the 2019/2020 year renewed. Thank you all.

- Our finances are in good shape giving us options to try new things and support our mission.
- We have used technology to present speakers and host exhibitions, virtually. Our Zoom events have been extremely well attended as was our "Walk Through" of the winter show awards.
- Our members continue to create beautiful art.

Thank you, members, for making our winter show such a success. We had many outstanding entries, the 120 pieces selected for the show were beautiful and our judge, Katherine Nelson, made exceptional award choices. We had 70+ members on the Zoom call and many others were able to view its recording.

There are a number of December art shows up and running around the area and our RAL artists are well represented as award winners and exhibitors.

We should all be optimistic as we move into 2021.

While we need to stay mindful and live safely, there is light at the end of our pandemic tunnel. Steve Jobs, the founder of Apple Computer, said:

- “If you want to live your life in a creative way, as an artist, you have to not look back too much.”
- “Let’s go invent tomorrow rather than worrying about what happened yesterday.”



We should remember these quotes as we move into 2021.

And RAL has some fun events planned for the first half of next year:

- Penny Kritz is planning to Zoom with us on February 4, 2021. Her topic will be finding inspiration for new artwork, creating compositions and avoiding “roadblocks.”
- Penny is an expert on the art creation application called Procreate, available for iPads. She has agreed to offer our members a three-session class on this software at a very appealing price. There will be more on this opportunity later.
- In March, award winning Plein Air artist and educator Christine Lashley will present her perspective on using warm and cool colors using a winter, snow landscape.
- In March the Rockville Art League and the City of Rockville will collaborate on a virtual show focused on the Glenview Mansion, the gallery and the surrounding grounds. Details are later in this newsletter.

- Our winter show judge Katherine Nelson has agreed to Zoom with us again in April for a drawing demonstration and her insights on art marketing.
- While the winter show is still quite fresh (and well worth additional looks and shares), Lisa is already planning for our next juried show. I am cautiously optimistic that our spring members’ juried show will actually be on exhibit at Glenview but as of now, for safety’s sake, it is planned as a virtual event.
- New technology that supports our art league will be implemented in 2021 (and we will help you get up to speed on its use).

“The essence of all beautiful art, all great art, is gratitude.”

—Friedrich Nietzsche



Special thanks to all of our board members for so selflessly working to keep our league viable this year. Their generosity and positive spirit are much appreciated (plus we had some fun).

Artists, please let me know if you would like to get more involved by becoming a member of our board. We have several open spots and would love to have your help as we enter 2021.

And finally, thank you artists for being creative, engaged, supportive, and for sharing beauty in your work and in your lives.

Sincerely,  
Patrick Sieg  
President

### **Rockville Art League 2020 Speaker Series**

**February 4, 2021: Penny Kritt on Creating  
Compositions, Zoom, 7:00pm**

Penny Kritt will offer a thought-provoking discussion about creating compositions. She'll

share easy ways to find inspiration and how to get past roadblocks that pop up. And learn how to tell when a piece is done so it doesn't get overworked. Mark your calendars: you won't want to miss this riveting presentation. (A zoom invitation will be sent out to members a few days prior).

She will also give a brief overview of the popular artistic app "ProCreate". Owners of iPads, may want to listen up! Perhaps you know all about ProCreate and already use it or maybe you've heard of it but are not sure what it is. Penny will briefly discuss this exciting creative tool loved by creative professionals and aspiring artists alike. She plans to offer a 3 part workshop on ProCreate to our members at a very reasonable rate in Feb/March. \$45 for three 90 minute interactive classes. Details forthcoming.



## RAL Juried Members' Winter Show 2020 Award Winners

	<u>Artist</u>		<u>Artwork Title</u>
<b><u>Best in Show</u></b>	Candy	Perque Herlihy	Glass House Dreams



---

### **Oil or Acrylics:**

<b>First Prize</b>	Robert	LeMar	Knowles Begins
--------------------	--------	-------	----------------



Second Prize	Isabella	Martire	Grace
Third Prize	Sally	Davies	Labyrinth of Life (View from the top of the Whitney, NYC)

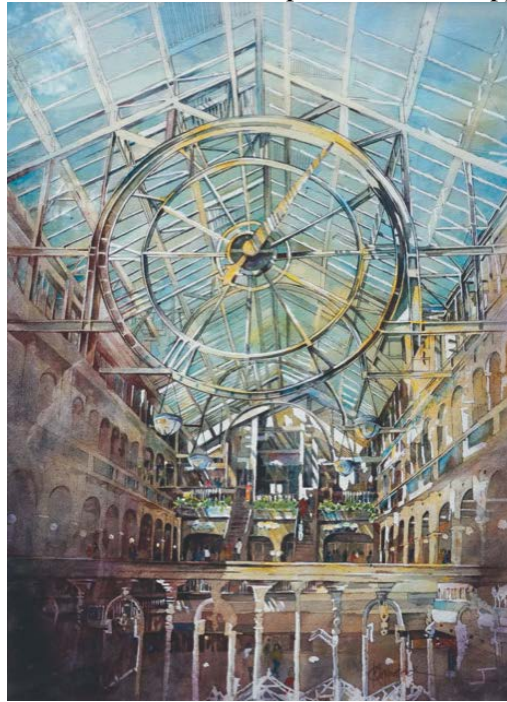
**Rockville Art League Newsletter January 2021**

Honorable Mention	Diane	Weiner	Blue, White and Pink
Honorable Mention	Patrick	Sieg	Farmer's Helpers
Honorable Mention	Philip	Friedman	Isolated Shadow
Honorable Mention	Li	Wang	Natalia
Honorable Mention	Paula	Zeller	Reflective
Honorable Mention	Paula	Zeller	Searching
Honorable Mention	Candy	Perque Herlihy	With You in Spirit

---

**Watercolors:**

<b>First Prize</b>	Cecile	Kirkpatrick	St.Stephen's Green Shopping Centre in Dublin
--------------------	--------	-------------	---



Second Prize	Lily	Kak	Physicians of Color: Healing America
Third Prize	Barbara	Bell	Nest
Honorable Mention	Sandy	Yagel	At Rest
Honorable Mention	Sue	Moses	Fishing
Honorable Mention	Ally	Morgan	Girls II
Honorable Mention	Marta	Legeckis	Golden Brookside

Honorable  
Mention

Sally

Davies

Spiral Swirl Staircase  
(Entrance to the Louvre,  
Paris)

---

**Pastels, Drawings, Hand Pulled Prints**

**First Prize**

Kathy

Tynan

The Flower Market



Second Prize

Karma

Massoud

Straw Weaving

Third Prize

Stephanie

Chang

Flawed

Honorable  
Mention

Diane

Weiner

Jessica

**Mixed Media, Collage, Experimental, Original Computer Generated**

**First Prize**

Beverly

Valdez

Fishing Village II Maracas



Second Prize

Marita

Gebhardt

Red Mountain

Third Prize

Michiyo

Mizuuchi

Rice Field

Honorable

Mention

Bill

Johnson

Chaotically Tranquil

---

**Sculptures**

**First Prize**

Sandra

Franklin  
Ehlers

Last Walk



**Rockville Art League Newsletter January 2021**

Second Prize	Sandra	Franklin Ehlers	Dancer Sketch 2
Third Prize	Pearl	Chang	Intraspection
Honorable Mention	Floyd	Roberts	Lady Sings the Blues

---

**Photographs**

<b>First Prize</b>	Simin	Parvaz	Through the Window
--------------------	-------	--------	--------------------



Second Prize	Michael	Kuchinsky	Next Stop, Planet Earth
Third Prize	Melanie	Greenfield	Terrapin Marsh
Honorable Mention	Lisa	Sieg	A Bittersweet Moment
Honorable Mention	Tyler	Henson	Leftovers

---





Top to bottom clockwise is "Tending Orchids" by John Weber (oil), "The Flower Market" by Kathy Tynan (received first prize in pastels), "Glass House Dreams" by Candy Perque Herlihy (Best in Show and oil), Charming Entry by Angela Lacey (watercolor).



Left to right and clockwise the following: "Physicians of Color Healing America" by Lily Kak (2<sup>nd</sup> prize in watercolor), "Next Stop, Planet Earth" Michael Kuchinsky (2<sup>nd</sup> prize in photography), "Matt's Bakery" by Nighat Ahmed, and "Leftovers" by Tyler Henson (Honorable Mention in photography).



The portraits are "Grace" by Isabella Martire (2<sup>nd</sup> prize in oils) and "Dissenting" by Patrick Sieg (oil).

**Rockville Art League and the City of Rockville** are hosting a virtual online exhibition:

***Missing the Mansion or For Love of Glenview***  
**March 2021**

If you've been a member of the Rockville Art League prior to April 2020, you know that we normally meet monthly in the beautiful Glenview Mansion on the first Thursday evening of each month. We hold our semi-annual large juried members' shows in the

Glenview Mansion Art Gallery and award winning RAL artists have had their own shows in conference rooms 5 and 6 throughout the year. In the other rooms of the art gallery, artists in the DMV have applied with the City of Rockville to have an art exhibit. Additionally, the Rockville Student Art Show organized by the City of Rockville in collaboration with the Rockville Art League has exhibited here annually as well. Approximately every six weeks in normal times, there is an art opening

reception in which the mansion art gallery is open to the public.

It's a beautiful venue to have an art show – the architecture, the gallery, the lighting, the grounds – all as stunning as the art.

Alas, we are in a pandemic and it remains closed until deemed safe by the City of Rockville to safely reopen to the public. Something all of us looks forward to. It is a place beloved by so many and close at heart to the RAL and the community.

With February on the horizon this would be an appropriate time to share your love for the mansion by creating a work of art to showcase Glenview Mansion, the Glenview Mansion Art Gallery, the grounds, the gardens, or an aspect of any of these.

Members in good standing may submit up to 3 pieces of art for consideration for an online show to show our love for Glenview Mansion and the Rockville Civic Center.

The work may be newly created but you may also submit a piece you have created *pre-pandemic* in the following mediums:

- oils/acrylics
- watercolors
- drawings, pastels, hand-pulled prints
- mixed media, collage, experimental
- photography
- sculpture

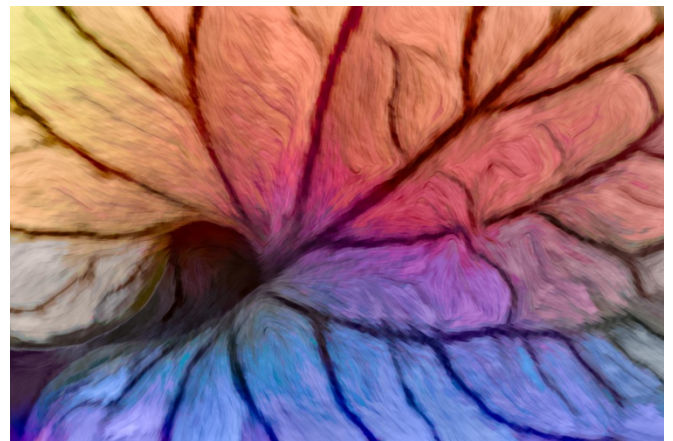
**Important:** If you are planning to visit **the grounds surrounding the mansion**, please note the *civic center park* will be **CLOSED to the public** from **Dec. 19-27, 2020** and **Jan. 9-16, 2021** for an archery-only deer cull at Civic Center Park in the John Hayes Forest. For more information please see: <https://www.rockvillemd.gov/2328/Deer-Culling-Pilot-Program>

An online entry form will be sent out to members in January.

Deadline for submissions: Friday, February 26. Prizes of recognition of 1<sup>st</sup>, 2<sup>nd</sup> and 3<sup>rd</sup> place will be awarded by the City of Rockville. The virtual show and the award-winning pieces will be shown on the RAL website as well as the City of Rockville's.

## Pandemic Paintings & Corona Creations

**Howard Clark's**, "Butterfly Leaf," was created during the pandemic.



### Requirements:

- Please send one image of a piece of art that you have created during the pandemic. (It does not have to be about it, but it could.)
- You may include a brief comment or a title along with your name.
- Please share something you are proud of.
- If selected, your work would appear in the next newsletter.
- Please send to: Susan Dunnell [newsletter@rockvilleartleague.org](mailto:newsletter@rockvilleartleague.org) and Patrick Sieg [president@rockvilleartleague.org](mailto:president@rockvilleartleague.org)

(Note: inclusion in the newsletter does not preclude work from being entered into our Juried Shows.)

## MEMBER NEWS

**Sally Davies** received the video referenced below from a juried exhibit “Symbiotic Presence” with MNCPPC, that accepted her “Labyrinth of Life” painting (48 x 24 acrylic on canvas). Sally’s painting is featured several times at the beginning of the video with the actual gallery views...and then at the 10:23 mark, her painting has a close up detail.

The music is very spooky atmospheric new age-y. It is an interesting exhibit.

<https://drive.google.com/file/d/1leMQ4dT3SkXw5q5bhtMHmLF7Mw58VVsj/view?usp=sharing>



Also, Sally’s painting “Saturday Morning” won Honorable Mention at the Art League of Alexandria’s December Exhibit. Here’s the link for that show.


<https://www.theartleague.org/event/december-2020-open-exhibit/>

Three of **Howard Clark**’s photos were selected for inclusion in the Olney Art Association's Winter Show at Bohrer Park in Gaithersburg. One of them, “Rose Window at the National Cathedral,” was awarded Honorable Mention.



Howard will be teaching four photography courses (virtually) through Frederick Community College during the spring semester. The first course covers how digital cameras work and how to get the best from your digital camera. The second is focused on going beyond the basics to produce more creative images. Next, he shows students how to manage and

safely store the pictures they've got. The final course will show you how get the most out of your existing images by editing them without the use of any Adobe products. Details are available [HERE](#). The full link is: [https://frederick.augusoft.net/index.cfm?method=ClassListing.ClassListingDisplay&int\\_category\\_id=6&int\\_sub\\_category\\_id=29&int\\_catalog\\_id=](https://frederick.augusoft.net/index.cfm?method=ClassListing.ClassListingDisplay&int_category_id=6&int_sub_category_id=29&int_catalog_id=)



**A Work of Art** by Debra Halprin  
Giclée Printing and Photography Service  
Create Fine Art Prints of your Artwork  
on Watercolor Paper or Canvas  
[Mastering the Fine Art of Giclée Printing](#)  
HalprinArt.com  
301-910-4750  
email: [Debra@HalprinArt.com](mailto:Debra@HalprinArt.com)  
in Rockville, Maryland



**The Compass Atelier**  
Art classes for beginners and experienced artists  
Special workshops Study Abroad  
Home of the revolutionary Master Artist Program



TheCompassAtelier.com TheCompassAtelier@gmail.com

**Kritt Studio Classes**

**Penny Kritt's**  
*Classes you can take at home*

**Both traditional and digital courses are offered for all levels of students.**  
[www.pennykritt.com/online-classes.html](http://www.pennykritt.com/online-classes.html)

For more info, call Penny at  
**301/989-1799**

**NEWSLETTER SUBMISSIONS**

Is your art included in a show? Have other news you wish to share with RAL members? Please send your submissions by the **15<sup>th</sup>** of each month for inclusion in the next newsletter, to: [newsletter@rockvilleartleague.org](mailto:newsletter@rockvilleartleague.org)

**GLENVIEW MANSION CONFERENCE ROOM SHOWS**

Monday delivery and hanging: 12PM–2PM & 5-7PM/Sunday Gallery Opening: 1:30—3:30PM  
 Monday Pick up: before 11AM

Glenview Mansion Schedule				
2021				
	Member(s)	Mon &/or Tues Deliver hours	Sunday Gallery Opening 1:30-3:30	Monday Pick-up
JAN				
FEB				
MARCH				

**\*Please note:** Glenview Mansion will remain closed until further notice and all shows scheduled for the 2020 fall season have been cancelled - and will be rescheduled once Glenview can safely open up again.

Structure of Monthly Shows: Conference Room Shows run concurrently with Main Galllery Shows, opening and closing on the same dates. Reception is same date and time as Main Gallery Shows.

Opening Receptions: At least one platter of finger foods (cookies, crackers/cheese, veggies/dip) should be supplied by the RAL artist on the day of the opening reception. Cups/napkins/water is provided by the City of Rockville for opening receptions. The Mansion will be open 45 min. prior to reception for the artists to set up on the day of the opening reception. Artists in rooms 5 and 6 are responsible for hanging their shows but will have assistance on site as needed.

**RAL Ongoing Show List**

Currently all these venues are closed due to COVID-19 social distancing policies.

**Twinbrook Library – 202 Meadow Hall Drive, Rockville, Maryland**

Shows for the library run from 1<sup>st</sup> of the month to the end of the month for 1 month shows.  
5 medium to large paintings, Contact person: Christine Lundy, 240-777-0252.  
[Christine.lundy@montgomerycountymd.gov](mailto:Christine.lundy@montgomerycountymd.gov)

<b><u>Name</u></b>	<b><u>From</u></b>	<b><u>To</u></b>
Open		

**Thomas Farm Community Center – 700 Falls Grove Drive, Rockville, Maryland**

12-16 medium to large paintings, Contact person: Melinda Norton (240) 314-8842.  
email: [mnorton@rockvillemd.gov](mailto:mnorton@rockvillemd.gov)

<b><u>Name</u></b>	<b><u>From</u></b>	<b><u>To</u></b>
Open		

**Marilyn J. Praisner Library – 14910 Old Columbia Road, Burtonsville, Maryland**

10 small to medium or 5-6 large paintings (10 hanging chains), Contact person: (240) 773-9455, Vera Ramaty

<b><u>Name</u></b>	<b><u>From</u></b>	<b><u>To</u></b>
Open		

**RAL BOARD OF DIRECTORS**

<b>Name</b>	<b>Position</b>	<b>E-mail</b>
Patrick Sieg	<i>President</i>	<a href="mailto:president@rockvilleartleague.org">president@rockvilleartleague.org</a>
Lisa Sieg	<i>1<sup>st</sup> Vice President</i>	<a href="mailto:jshows@rockvilleartleague.org">jshows@rockvilleartleague.org</a>
Vacant	<i>2<sup>nd</sup> Vice President</i>	<a href="mailto:oshows@rockvilleartleague.org">oshows@rockvilleartleague.org</a>
Vacant	<i>Program Coordinator</i>	<a href="mailto:programs@rockvilleartleague.org">programs@rockvilleartleague.org</a>
Lisa Sieg	<i>Volunteer Coordinator</i>	<a href="mailto:volunteer@rockvilleartleague.org">volunteer@rockvilleartleague.org</a>
Vacant	<i>Membership</i>	<a href="mailto:membership@rockvilleartleague.org">membership@rockvilleartleague.org</a>
Rob Gale	<i>Treasurer</i>	<a href="mailto:treasurer@rockvilleartleague.org">treasurer@rockvilleartleague.org</a>
Cathy McDermott	<i>Secretary</i>	<a href="mailto:secretary@rockvilleartleague.org">secretary@rockvilleartleague.org</a>
Susan Dunnell	<i>Newsletter Editor</i>	<a href="mailto:newsletter@rockvilleartleague.org">newsletter@rockvilleartleague.org</a>
Liliane Blom	<i>Liaison Officer</i>	<a href="mailto:liaison@rockvilleartleague.org">liaison@rockvilleartleague.org</a>
Dave Allen	<i>Publicity/marketing</i>	<a href="mailto:publicity@rockvilleartleague.org">publicity@rockvilleartleague.org</a>
Eric Goss	<i>Communications</i>	<a href="mailto:communications@rockvilleartleague.org">communications@rockvilleartleague.org</a>
Lisa Sieg	<i>Hospitality</i>	<a href="mailto:hospitality@rockvilleartleague.org">hospitality@rockvilleartleague.org</a>
Diane Jeang	<i>Monthly Member Shows</i>	<a href="mailto:mshows@rockvilleartleague.org">mshows@rockvilleartleague.org</a>
Patria Baranski	<i>Historian</i>	<a href="mailto:historian@rockvilleartleague.org">historian@rockvilleartleague.org</a>
Michael Auger	<i>Webmaster</i>	<a href="mailto:webmaster@rockvilleartleague.org">webmaster@rockvilleartleague.org</a>
Eileen Mader	<i>Founder</i>	

Rockville Art League  
P.O. Box 4026  
Rockville, MD 20850

