



RockvilleArtLeague.org

Vol. XXX No. 2

October 2020

**NEXT MEETING: Virtual Meeting: October 1, 7:00PM
Dr. Renee Sandell, “Riding *The Great Wave* & the 2020 Pandemic,”
An Interactive Exploration of Creativity**

**Message from the President,
Patrick Sieg**

Dear Rockville Art League members,

There is change in the air. It is feeling like fall today and a change of seasons is very welcome. I find the fall colors and more bearable temperatures conducive to creativity.

And I believe people are feeling a bit more optimistic about the pandemic and even venturing out, when safe and socially distant. The National Gallery of Art is again open to art lovers on a reservation basis. I haven't returned yet but perhaps one day soon (assuming I can get a reservation).

While there is some optimism, we all know that the virus is still out there and for that reason we will be conducting things RAL in a safe way. For now, “virtual” is our operating mode. I hope you all had a chance to view Dr. Irina Stotland's talk on Velazquez. Dr. Stotland has become something of a traditional start for our new season and her virtual presentation marks the fourth time she has spoken with our league. I look forward to RAL hosting her again in the future.

Dr. Renee Sandler will be with us via Zoom on October 1. Her topic is viewing and engaging with art and how that exploration can jump start our own creativity. We are lucky she can spend time with us.

Member, award-winning artist and art instructor Ally Morgan will give us a virtual demonstration on watercolors and mixed media animal portraits. I look forward to some of her amazing animal paintings in the course of her talk, scheduled for November.

Photographer Michael Koren will be sharing tips and techniques, virtually, on how to photograph art. This is a bonus offering mid-October and it will come in handy as we prepare for our winter juried art show.

As you can see later in the newsletter, we are gearing up for our Juried Members' Winter Art Show. Quick thoughts on this show...

- We expect to have a beautiful show.
- It will be virtual (with some hope that it will be actual, if safety allows).
- We are limiting the size of the show to that of previous shows...about 110 pieces will be juried in. We expect it to be competitive so please enter your best work.
- Prizes will be awarded in six categories (see details in show call in this newsletter) and a “Best in Show” award. All awards will be based

on the images submitted with your entry...Michael Koren's talk is very welcome here.

- Our judge for this show is artist and instructor Katherine Nelson. She is familiar with our league as she judged a show for us in 2015. We are glad to welcome her back.

We are off to a positive start with our membership renewals. Without support we would be unable to serve as we have in the past, with shows and speakers and networking. Last year we had approximately 140 members. To date, 80 members have renewed and thank you. I hope to see many of those past members who have not yet renewed, step up. We also welcomed several new members. Thank you again for supporting our league.

I am hopeful that, as we get closer to the end of 2020 and move into 2021, there will be good news about the possibility of getting together in person, safely. As for now, virtual viewing of art keeps us thinking and creating.

We are enthusiastic about our upcoming virtual activities and thankful for these speakers and the presentations and also about the upcoming Juried Members' Winter Show. We are lucky that we have these virtual options.

This year we began highlighting the work completed during the pandemic by our members. As you will see later in the newsletter, our Pandemic Creations section is catching on. Thank you, members, for contributing, and to Susan Dunnell for creating our newsletter for RAL each month.

Here are some things I believe:

- Artists are better able to thrive and survive in time of social distancing. We can think differently and see beauty in new and different ways...even if it is challenging at times.
- There will be a new normal after the pandemic. We may miss some of the old ways, but we are growing new processes and ways of living. Change is exciting and

- Beauty is best when shared in person and we will get there sometime soon.

Two quotes I will leave you with:

- "Beauty should be shared for it enhances our joys. To explore its mystery is to venture to the sublime." (Joseph Cornell, an American assemblage artist, 1903-1972.)
- "Every artist dips his own brush in his own soul and paints his own nature into his pictures." (Henry Ward Beecher, American clergyman and social reformist, 1813-1887.)



We look forward to seeing your creations.

Sincerely,
Patrick Sieg
President of the Rockville Art League

Rockville Art League 2020 Speaker Series

**October 1 Meeting: Dr. Renee Sandell,
"Riding The Great Wave & the 2020
Pandemic": See More in Art & Life**

This Zoom presentation will be a lecture, followed by Q & A. If attending, please be sure to sign-in at 6:50 pm, gathering in the Waiting

Room so we can start exactly at 7 PM. A Zoom link and instructions will be mailed out to members earlier on October 1, 2020; please do not share this link with anyone. Thank you.

Artist and art educator Renee Sandell will engage us in using a Balanced Way of Seeing® as we consider Hokusai's *The Great Wave* in the timely context of needed resilience during the Pandemic. This presentation is for all types of artists and art appreciators. Please join us.



Renee Sandell has over 45 years of art teaching experience in classrooms and museums and other venues. Renee is founding director of the expeditionary, museum-based SummerVision DC Program, which she designed and has delivered for the National Art Education Association (NAEA) since 2010. Previously Director/Professor of Art Education at George Mason University (2004-2014) and Professor of Art Education at Maryland Institute College of Art (1990-2003), in 1980, Sandell was a Fellow at the National Endowment for the Arts. Co-author of two books on gender issues (and a forthcoming book *Real Lives 21: Stories Showcasing the Stories of Art Educators and Contemporary Learning*), Sandell has published numerous articles, book chapters and art curricula. To learn more about Renee's teaching, visit Renee's website www.visualfitness4all.com

Renee's artistic installations of ink and water-media markings explore the human condition in time, space, and place. Her painted "Silk Meditations" reveal positive energies contained in human virtues, reflecting sensory states of consciousness through spiritual expression. Immersed in universal gratitude, these works become meditative mindscapes of visual affirmations needed in our turbulent times. To learn more, visit Renee's art website www.reneesandellart.com

This fall, Renee will be teaching her first Smithsonian Associates studio course: "Curating a Life: Art as Memoir," which starts on October 19, 2020. <https://smithsonianassociates.org/ticketing/tickets/curating-life-art-as-memoir?fbclid=IwAR3NXAXy5yenWmR0jwsIXTH1zSI1fF2es7e5ZuQLAz79Ho-lpd-98p2mjRE>

"How to Photograph Your Artwork" by Michael Koren

A bonus video will be sent out to members mid-October.

Photographic Artist Michael Koren has prepared an informative video with user friendly tips on how best to illuminate and photograph your artwork for online submissions for the Rockville Art League. We encourage all artists no matter how comfortable you are photographing your work to watch this. He also addresses how to rename and resize a photo for submitting work online and provides important information on skills we all need for the virtual world. And this may prove very helpful for those submitting work into our RAL Juried Members' Winter Show.

Many of you may remember Michael Koren as one of our most popular speakers over the past several years. His clear instructions, user friendly tips and apps along with his great sense of humor are complimented by his artistic eye.

November 5: Ally Morgan - Animal Portraits and Watercolor Mixed Media Presentation & Demo

(A video will be sent out to members on this date.)

RAL Juried Members' Winter Show

VIRTUAL SHOW

Opens

DECEMBER 6, 2020

Call for entries: deadline Thursday, November 5. *Online registrations only.*

Judge: We are honored that Katherine Nelson will jury our Rockville Art League Juried Members' Winter Show. An artist, educator, juror, expat, traveler, and grain enthusiast, she earned her Bachelor of Science in Art Education K-12 from Skidmore College, NY in 1985 and a Master of Arts in Drawing from SUNY Albany in 1990. She is presently an Instructor of Drawing at The Columbia Art Center and has taught art to all ages in the past 25 years in both public and private schools. Katherine Nelson has taught drawing at The Yellow Barn Studio and has written curriculum for museum art education workshops in drawing. Her drawings/sculpture have been included in over one hundred and twenty-five combined exhibits of solo, juried, and invitational shows in the USA and Europe. Please see her website for further details:

<http://www.katherinenelsonart.com/artist-bio>

Katherine Nelson will give a video presentation on the award-winning pieces which will be sent out to members on

December 6. The entire virtual show will be available then on our website as well.

Call Deadline: You will be asked to submit your work **online**. *Members in good standing* may submit up to 2 pieces of work for this show now through **Thursday, November 5**. No submissions will be accepted after the November 5 deadline. If your work was accepted into this show, you will be informed by November 24. Please *read all the information below* carefully before submitting.

Entry Fee: A \$10 show fee will be collected from accepted artists (not per piece).

Eligibility and rules: The following rules apply for all works entered. Each member **in good standing** may enter up to two pieces. For each piece you will need to submit a separate online JotForm. For each submission you will be required to submit an image of your piece on the online form. **Please rename** your image (jpg or jpeg) with your artwork's title, prior to uploading it.

Although this is planned as a virtual show, the following requirements still apply:

- The maximum measurement of any framed side is **48 inches**.
- The **entries may not have been exhibited** previously in a RAL Juried Members' Show.
- RAL retains the right to determine suitability of work for entry in this show.
- Work is to be submitted with the JotForm, online applications only. A submission of the form constitutes that you agree to the terms of the show agreement stated below and included on the JotForm.
- **Sales:** As the Winter Juried Member's Show is to be virtual, there will be no commission to the City of Rockville.

Artists may handle their own sales and any inquiries sent to the Rockville Art League juried show coordinator or the president will be forwarded to the artist. (If there is a safe opportunity for an exhibition at Glenview Mansion, then instructions would be sent out to accepted artists. And in the event of an actual show, the *City of Rockville* handles the sales and a 20% commission of works sold would be donated to the City of Rockville. You will see that referenced on the show agreement.)

Categories of Artwork Include:

- Oils and acrylics
- Watercolors
- Pastels, drawings, and hand-pulled prints
- Mixed media, collage, experimental, and original computer-generated art
- Photographs
- Sculpture and ceramics

Awards:

- Best in Show (cash prize)
- First, Second, Third in all categories (cash prizes)
- Honorable Mention at Judge's Discretion

Schedule:

- Open now until Thursday, November 5 - online submissions with JotForm entry
- **November 5 - deadline for all submissions**
- November 24 – acceptances sent out by this date
- December 6 – Judge Katherine Nelson video presentation on award winning pieces will be sent out to all members to view.

Online form: register your work *online*. Submissions of up to 2 pieces per artist will be accepted by **Thursday, November 5**. One form per artwork.

The **Show Agreement** below is included on the JotForm. A submission of the form constitutes that you agree to the terms of the show agreement.

“I agree to the rules of the show as presented in the show call, that my entries are my original works and have not been accepted into a previous Rockville Art League Juried Members’ Show, and I will not hold the Rockville Art League, Glenview Mansion or the City of Rockville responsible for any possible loss or damage to my entries. As with any show, I understand that all reasonable care will be taken in the handling of entries. I give RAL, Glenview Mansion, and the City of Rockville permission to use images of my artwork and publish them as appropriate. I acknowledge a commitment to donate 20% of the sale price of my work, if sold during a physical show at Glenview to the City of Rockville. If it remains virtual only, there will be no commission due.”

Please click on the JotForm to enter:

<https://form.jotform.com/202535076197155>

Please type in all information carefully and clearly. You will receive a response back from JotForm to the email you provide. This information will be used to contact you and to create the virtual show. Deadline for all entries is **Thursday, November 5**.

Questions regarding the show? Need help or support with the entry process?

Please contact:

Lisa Sieg: jshows@rockvilleartleague.org

Patrick Sieg:

president@rockvilleartleague.org

Pandemic Paintings & Corona Creations



Sue Moses calls this one Fashion Queen. When her daughter was four she put on every piece of clothing in the box!



Merry Lynn's piece is entitled Covid 19.



A Canadian company named Le Galériste is making “wearable art” from original paintings. This company has selected one of **Sarah Sohraby**’s paintings to print on masks. These masks are available in all sizes from toddler to XL at:

art-a-porter.com/sarah.sohraby

The royalties are donated to support art programs at local schools in Montgomery County.



Nighat Ahmed’s, “Matt’s Bakery,” is one of the family portraits that she painted during the pandemic; it is of her son-in-law, Matt. He started his own bakery in 2019 at Pacifica, CA, after working in Information Technology for about 10 years.



David Allen painted this to show how eerily deserted the streets were in April. The title is “In the Time of Covid-19”.



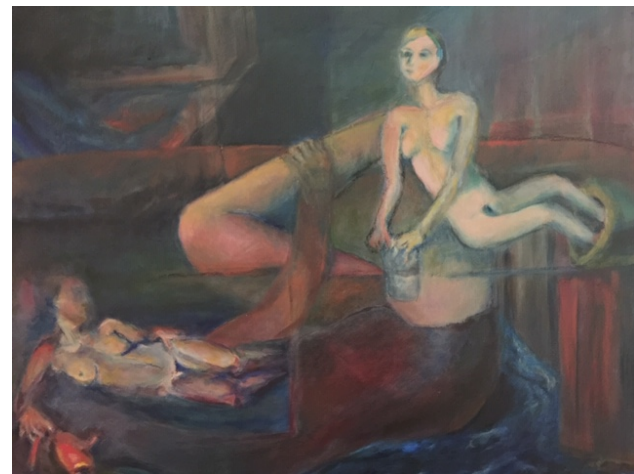
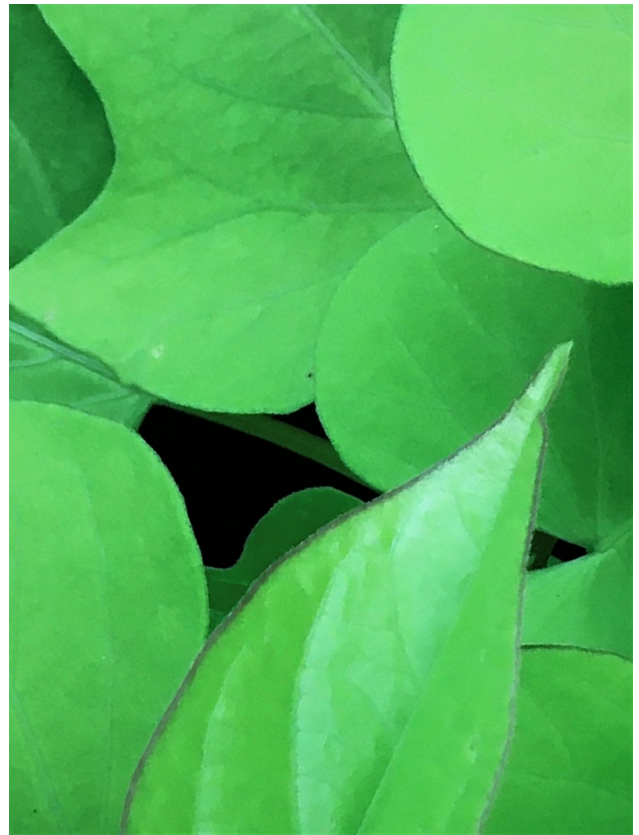
Jennifer Lubell's 4 small pieces (they're part of a set). The "We Isolate" series depicts figures in enclosed urban spaces, a somewhat whimsical take on the idea of lockdown.



Chris Luckman has been very busy working on gouache paintings since she can easily do them at home. The title of this painting is "Bikers on the Path." It is from the biking and jogging path along Sligo Creek Parkway which is near her house. Some bikers wear masks, some don't.



Buddy and his buddy as seen in **Alexandra Treadaway's** Veterinarian's parking lot.



“Wuhan Virus,” by **Sharon Wine**
Virus emerging from test tube. Purposely allowed to spread. Swirling water. Attempted resistance. Not successful. Chaos. Overturned jug economic consequences.

Mike Kuchinsky's “Urban Moon,” and “Red Line.”



Lily Kak's "Your Breath Counts: Vote for Change," was invited to an exhibit called, "Why I Vote," organized by the City of Gaithersburg and the Women's Caucus for Art, D.C. during September 11 - November 16.

A panel discussion will be streamed live on the Arts on the Green Facebook page & the City's YouTube channel on October 4 from 1:30 - 2:30 p.m. The panel includes four participating artists including Lily Kak. More details can be found here:

<https://www.gaithersburgmd.gov/recreation/recreation-calendar/women-s-suffrage-centennial-series>



Lily Kak's, "We the Women." Statement: Commemorating the 100th anniversary of women's suffrage and the 100th anniversary of the first pandemic.

Here's an opportunity for current members to connect with others in our group.

Requirements:

- Please send one image of a piece of art that you have created during the pandemic. (It does not have to be about it, but it could.)
- You may include a brief comment or a title along with your name.
- Please share something you are proud of.
- If selected, your work would appear in the next newsletter.
- Please send to: Susan Dunnell
newsletter@rockvilleartleague.org
and Patrick Sieg
president@rockvilleartleague.org

(Note: inclusion in the newsletter does not preclude work from being entered into our Juried Shows.)

**Critique by
Penny Kritt**

As the Storm Recedes

If your landscapes – or seascapes – are boring, add a thought-provoking element. The goal is to give the viewer something to latch onto that brings up a memory or a specific feeling. You get to pick what that should be. For example, a colorful beach umbrella with an open ice chest makes for a party mood, even if there are no figures that give more information. Conversely, a surfboard smashed on some rocks makes a more somber mood, but you can be sure that every viewer will automatically *look* for the surfer.

In **As the Storm Recedes** below, I used a color strategy instead of props to give to imply that *there's still plenty of time to set up the grill on the beach for the party tonight!*



As the Storm Recedes
Penny Kritt
Acrylic on Canvas

If you can enlarge the image below on your screen, do it so you can better see the many subtle shifts in colors. While the painting is predominantly blue and gray, there are many muted shades of rose and gold in the water,

sky and clouds to warm and “happy up” the scene. When you see the sample blocks below, they don’t appear to be very bright. The secret is to put them against something even more gray and/or neutral. It’s the *contrast* that makes these swatches seem brighter than they really are.



Upon closer inspection, you see that every color used above was a tertiary, a some ratio of all the primary colors of red, blue and yellow. It doesn’t matter whether those were the colors right out of the tube or not. It is what it is. Would the scene really change a lot with the introduction of a single bright color?

In the modified version below, I used a bright rose color (a mixture of red and blue) as seen on the wooden post in the lower right. Of course, that one spot is much too bright, but it is there so you can see what color was chosen. Lighter versions are also scattered around to make the color pattern more harmonious. But it completely changes the mood of the piece. It also changes the time of day. Now that there is so much more red, we instinctively know that it’s hours later and the sun will soon set.



Choosing the right art materials makes the process a lot easier. The first step was to use a canvas that had a rough texture to it so that colors in lower layers sparkled through a little, even though all the paints used were opaque. Close inspection shows that the first layer, also known as a “ground” was a brick color that was thinned down. The purpose of a ground is to kill off the intense white of the canvas. That makes it easier to accurately get subsequent light values.

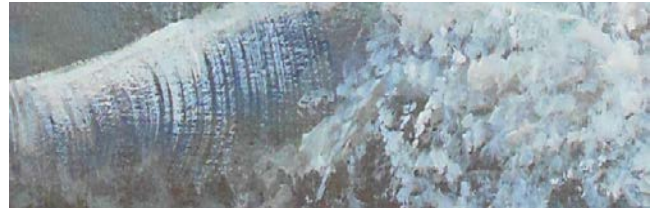
A good choice is Indian red – in any medium. It’s a very opaque color and it leans toward a warm reddish brown. When you thin it down a little, it takes on a warm glow that peeks out from under later layers when using acrylics or oils on canvas. If you’re working in watercolor, you might want to use more of a “jigsaw puzzle” approach where colors are next to each other instead of overlapping.



Indian red (pure) (thinned down)

Below is an enlargement of the waves at the lower right corner. At first there seems to be a lot of pure white, but closer inspection shows a large variety of colors.

A fairly hard edge on the diagonal crests of the waves gives a sense of depth that shows successive ones are closer. Use heavy applications using thick and opaque zinc white paint (or Chinese white in watercolor) to build the foam and splash of the waves. Even though the reddish ground color was completely dry, flecks of it still show through. The result is that there is very little pure white. That’s exactly what is required to get the appearance – and texture -- of rounded foam. Otherwise you have flat white polka dots or confetti.



Then I used a fan brush to get the *curved* white streaks as the rushing water runs over the crest of the wave and begins to fall back down. If most of your white brush strokes are straight and vertical, it will look like a trickling waterfall instead of a rushing wave.

The next insert below shows how dark the second layer of gray was originally. Most of the gray was covered up. If the white was used more sparingly so the shadows under the cresting wave were darker, the waves would seem larger and more threatening.



The end result is a painting that is almost entirely in the midtone range with a few light areas and no darks at all. The magic is in the temperature shifts – all in neutral colors.

Happy painting!

For online classes in digital art, contact Penny at 301/989-1799

<https://www.pennykritt.com/online-classes.html>

©Penny Kritt 2020

MEMBER NEWS



Patricia Duproof is selling Rockville Spirit Goods to support our local Rockville Arts Organizations. She has flag masks, ties, mousepads, small carry bags, and more! Visit and buy directly:

<https://www.pdubroof.com/rockville-spirit>.

She will be dividing the proceeds between a few organizations, including RAL!!! For more information or bulk orders, please contact, Patricia Dubroof, artforyourwalls@gmail.com 301-641-6375.

Professional Fine Art Restoration and Repair

Have your Fine Art Oil or Acrylic Paintings and Antique Frames Restored or Repaired with Museum Quality Work. Over 30 years in Fine Art Restoration Experience. Studio located in Rockville, Maryland.


For a Consultation at No Cost or Obligation to you, contact:

Abraham Garcia

301-770-5015


abrahamdesigns@hotmail.com

www.AbrahamArtImpressions.com



The Compass Atelier

Art classes for beginners and experienced artists
Special workshops Study Abroad
Home of the revolutionary Master Artist Program



TheCompassAtelier.com TheCompassAtelier@gmail.com

Kritt Studio Classes

Penny Kritt's


Classes you can take at home

Newly announced online classes!

Both traditional and digital courses are offered for all levels of students.

www.pennykritt.com/online-classes.html

For more info
call Penny at
301/989-1799



A Work of Art by Debra Halprin
Giclée Printing and Photography Service
Create Fine Art Prints of your Artwork
on Watercolor Paper or Canvas

HalprinArt.com
301-910-4750

email: Debra@HalprinArt.com
in Rockville, Maryland

NEWSLETTER SUBMISSIONS

Is your art included in a show? Have other news you wish to share with RAL members? Please send your submissions by the **15th** of each month for inclusion in the next newsletter, to: newsletter@rockvilleartleague.org

GLENVIEW MANSION CONFERENCE ROOM SHOWS

Monday delivery and hanging: 12PM–2PM & 5-7PM/Sunday Gallery Opening: 1:30—3:30PM
 Monday Pick up: before 11AM

Glenview Mansion Schedule				
2020				
	Member(s)	Mon &/or Tues Deliver hours	Sunday Gallery Opening 1:30-3:30	Monday Pick-up
SEPT/OCT	CLOSED			
OCT/NOV	CLOSED			
DEC	RAL Winter Show	VIRTUAL		VIRTUAL
2021	Member(s)	Mon &/or Tues Deliver hours	Sunday Gallery Opening 1:30-3:30	Monday Pick-up
JAN				
FEB				
MARCH				

***Please note:** Glenview Mansion will remain closed until further notice and all shows scheduled for the 2020 fall season have been cancelled - and will be rescheduled once Glenview can safely open up again.

The following artists were scheduled for 2020 season and have had their shows cancelled or their requests cancelled:

- **Susan Frisbie**
- **Norda Kittrie**
- **Gloria Miotto**
- **Susan Dunnell**
- **Cathy McDermott**
- **Sue Moses**
- **Stephanie Gustavson**
- **Sarah Sohraby**
- **Richard Fisher**

These artists will have priority for Glenview shows in the 2021 season, with scheduling subject to re-opening. Please contact Diane Jeang at chickendoc44@gmail.com if you are on this list and request your preferred show dates if have not already done so. Thank you.

Structure of Monthly Shows: Conference Room Shows run concurrently with Main Gallery Shows, opening and closing on the same dates. Reception is same date and time as Main Gallery Shows.

Opening Receptions: At least one platter of finger foods (cookies, crackers/cheese, veggies/dip) should be supplied by the RAL artist on the day of the opening reception. Cups/napkins/water is provided by the City of Rockville for opening receptions. The Mansion will be open 45 min. prior to reception for the artists to set up on the day of the opening reception. Artists in rooms 5 and 6 are responsible for hanging their shows but will have assistance on site as needed.

RAL Ongoing Show List

Currently all these venues are closed due to COVID-19 social distancing policies.

Twinbrook Library – 202 Meadow Hall Drive, Rockville, Maryland

Shows for the library run from 1st of the month to the end of the month for 1 month shows.
5 medium to large paintings, Contact person: Christine Lundy, 240-777-0252.

Christine.lundy@montgomerycountymd.gov

<u>Name</u>	<u>From</u>	<u>To</u>
Open	Sept. 1, 2020	Oct.1, 2020
	Oct. 1, 2020	Nov. 1, 2020

Thomas Farm Community Center – 700 Falls Grove Drive, Rockville, Maryland

12-16 medium to large paintings, Contact person: Melinda Norton (240) 314-8842.

email: mnorton@rockvillemd.gov

<u>Name</u>	<u>From</u>	<u>To</u>
Open	Sept. 15, 2020	Oct. 15, 2020
	Oct. 15, 2020	Nov. 15, 2020

Marilyn J. Praisner Library – 14910 Old Columbia Road, Burtonsville, Maryland

10 small to medium or 5-6 large paintings (10 hanging chains), Contact person: (240) 773-9455, Vera Ramaty

<u>Name</u>	<u>From</u>	<u>To</u>
Open	Sept. 15, 2020	Oct. 15, 2020
	Oct. 15, 2020	Nov. 15, 2020



RAL BOARD OF DIRECTORS

Name	Position	E-mail
Patrick Sieg	<i>President</i>	president@rockvilleartleague.org
Lisa Sieg	<i>1st Vice President</i>	jshows@rockvilleartleague.org
Vacant	<i>2nd Vice President</i>	oshows@rockvilleartleague.org
Vacant	<i>Program Coordinator</i>	programs@rockvilleartleague.org
Lisa Sieg	<i>Volunteer Coordinator</i>	volunteer@rockvilleartleague.org
Vacant	<i>Membership</i>	membership@rockvilleartleague.org
Rob Gale	<i>Treasurer</i>	treasurer@rockvilleartleague.org
Cathy McDermott	<i>Secretary</i>	secretary@rockvilleartleague.org
Susan Dunnell	<i>Newsletter Editor</i>	newsletter@rockvilleartleague.org
Liliane Blom	<i>Liaison Officer</i>	liaison@rockvilleartleague.org
Dave Allen	<i>Publicity/marketing</i>	publicity@rockvilleartleague.org
Eric Goss	<i>Communications</i>	communications@rockvilleartleague.org
Lisa Sieg	<i>Hospitality</i>	hospitality@rockvilleartleague.org
Diane Jeang	<i>Monthly Member Shows</i>	mshows@rockvilleartleague.org
Patria Baranski	<i>Historian</i>	historian@rockvilleartleague.org
Michael Auger	<i>Webmaster</i>	webmaster@rockvilleartleague.org
Eileen Mader	<i>Founder</i>	

Rockville Art League
P.O. Box 4026
Rockville, MD 20850

