



RockvilleArtLeague.org

Vol. XXIX No. 8

April 2020

NEXT MEETING: Thursday, May 14, 6:30PM
Juried Art Show Walkthrough with Judge Ruth Lozner

Kris Loya, “Marketing Yourself as an Artist in the Digital Age”
Postponed until June 4, 2020

Message from the President, Patrick Sieg

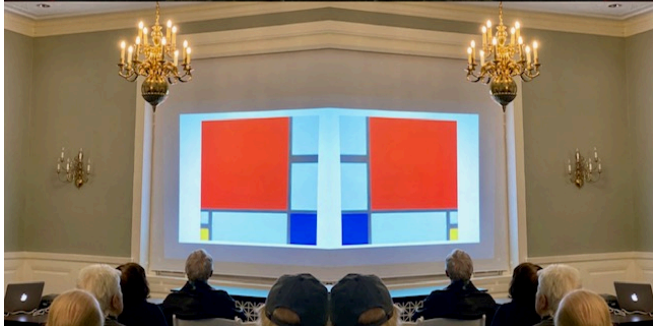
Dear Rockville Art League Artists,

Corona virus and COVID-19...
The virtues of “social distancing.”
We are postponing our April RAL meeting.
I hope everyone is being careful and staying healthy.
More on this virus stuff a bit later.

Dave Allen did a terrific job sharing his knowledge about 20th century abstract artists...the New York-based *Abstract Expressionists*. I know a bit more about abstract art and these artists now.

- They were a hardworking and hard-drinking and chain-smoking group, by and large.
- Most were impoverished (truly starving artists) and lived miserable lives while staying dedicated to their artistic vision.
- Many died too young and those that didn't, lived longer (often miserable) lives. That is until the art world caught up to their ahead-of-their-time creations and started buying their work. Selling work is a great antidote to misery.

- The *Abstract Expressionists* threw out art's existing theories and rules and pushed further than any artists had before or after.



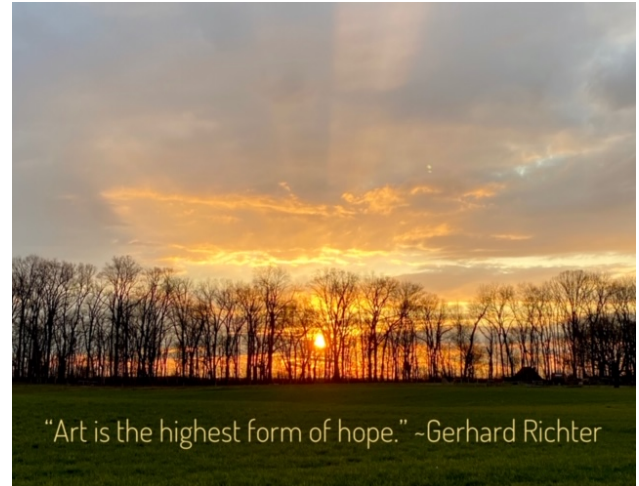
We have a number of fantastic abstract artists in our group and I look forward to seeing their work in our shows including upcoming spring members' show. And thanks to MariaTeresa Camacho-Hull for speaking to members about her work after the

meeting. Her work is on display in rooms 5 and 6 in the Glenview Mansion Gallery.

As promised, more on the virus and the effect it is having on the Rockville Art League...

- **Our April RAL meeting is being moved to June 4.** Both Lisa and I have heard concerns about gatherings (from members and many others) and moving our meeting is prudent and necessary.
- Fortunately, the mansion is available to us on Thursday, June 4
- Our speaker, Kris Loya is also willing to present on that later date.
- We have been consulting with Betty Wisda, our contact with the City of Rockville, about upcoming shows including our Juried Members' Spring Show.
- As of now, the calendar for our member show has not changed. We are still a go for:
- Dropping work off on May 11,
- Our walk-through with judge, Ruth Lozner, on May 14
- The show opening and award presentation on May 17.
- Please see show details later in the newsletter and remember that the entry deadline is April 2.
- Please understand that since the Glenview Mansion and the Art Gallery are city facilities, we are subject to Rockville's safety precautions, in addition to our own decisions.
- Any and all changes are meant to keep visitors safe (including RAL members).
- We will stay in contact with the city and we will communicate any relevant changes.
- We will communicate via email outreach, the RAL website and RAL's Facebook page (and please like us on Facebook). Please be on the lookout for our communications.

All of us are affected by the virus. Cancellations, scarcity and worry take a toll. Social distancing takes a toll. Common sense actions like limiting gatherings and personal contact is helpful.



And we as artists we may be more resilient than our non-artist friends and acquaintances.

- We find beauty in things and capture it in our work. Even our art related social commentary is rendered in a beautiful, mind expanding way (thinking about those *Abstract Expressionists*).
- Our creativity continues even if we are maintaining a social distance. Art can be created and enjoyed at a distance...no hand shaking required.

We have a community in the Rockville Art League that is supportive and please feel free to reach out to me and to each other if you need or want to. No one has all the answers, but communication is really helpful even if via email, text or phone. Perhaps we can even have some "gentle critiques" electronically.

We all look forward to getting closer to "normal" once the virus threat passes. I hope the effects on us, and our family and friends are minor, both emotionally and physically...and short lived. Please think about and practice your art as we weather this virus storm.

The love of art is therapeutic.

I personally plan to complete some paintings in the next number of weeks (and will enjoy the process of creating them even if some paintings go unfinished).



I am also looking forward to beautiful spring weather and seeing stocked supermarkets shelves.

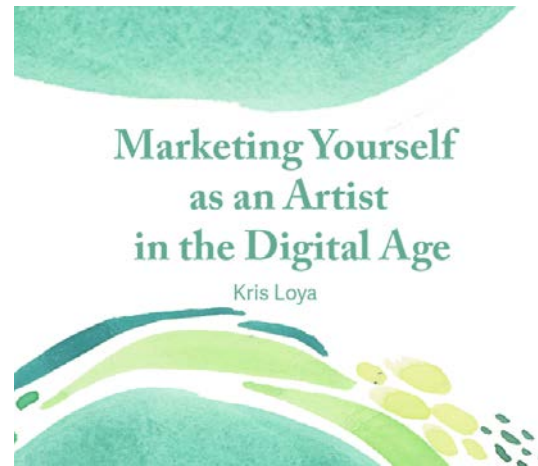
Your thoughts and comments are welcome and encouraged.

Be well.

Patrick Sieg
President



Rockville Art League 2020 Speaker Series



**The April 2, 2020 meeting has been postponed and rescheduled for:
June 4, 2020, 6:30pm**
Presentation by **Kris Loya**
Marketing Yourself as an Artist in the Digital Age

We are pleased to welcome back our judge from the *RAL Juried Members' Winter Show*, Kris Loya, this time to discuss the important topic of how to market yourself in the digital age. With a plethora of online platforms and services demanding our attention, Kris Loya will help you navigate the digital space to find the platform that will be most comfortable and productive for you to use so that your work can be seen by a worldwide audience. She will discuss:

- **Social Media Platforms** with a focus on creating specific content for Instagram and Facebook
- **Posting** - why, when and how
- **Marketing** your online events
- **Online galleries**
- **Your artist website.**

RAL Juried Members' Spring Show

GLENVIEW MANSION

MAY 17 - JUNE 26, 2020

Call for entries: deadline Thursday, April 2. *Online registrations only.*

We are excited that the Rockville Art League Juried Member's Spring Show will be on exhibit at Glenview Mansion and honored to have Ruth Lozner as our judge.

Judge: Ruth Lozner received a BFA from Carnegie-Mellon University, and a MFA from American University. She has held faculty positions at the University of Maryland, College Park, Parsons School of Design, New York, and the University of the Arts, Philadelphia. She currently holds the titles of Professor Emerita from the University of Maryland and Fellow of the Royal Society the Arts, UK. While her professional as well as academic career has encompassed painting, editorial illustration, film and print art direction, for the last 15 years she has focused her passion, imagination and energies on assemblage sculpture and collage. More recently she has embarked on new conceptual directions while collaborating with other artists to achieve her goals. In addition, she is an education consultant, lecturing and giving workshops to artists and designers on a variety of subjects including "The Creative Process and the Art of Brainstorming," "Innovative Design Thinking Methods," "Visual Literacy," and "The Intersection of Design and Art Throughout History."

Ruth Lozner will conduct a gallery walk-through on **Thursday, May 14 at 6:30pm.**

Call Deadline: You will be asked to submit your work **online only.** *Members in good*

standing may submit up to 2 pieces of work for this show now through **Thursday, April 2.** No submissions will be accepted after the April 2 deadline. If your work was accepted into this show, you will be informed by Monday, April 20. Please *read all the information below* carefully before submitting.

Entry Fee: A \$10 show fee will be collected when *accepted* artwork is dropped off along with the show agreement.

Eligibility and rules: The following rules apply for all works entered. Each member **in good standing** may enter up to two pieces. For each piece you will need to submit a separate online JotForm. For each submission you will be required to submit an image of your piece on the online form. **Please rename** your image (jpg or jpeg) with your artwork's title, prior to uploading it.

The maximum measurement of any framed side is **48 inches.** Only **original** works **framed securely with hanging wire** are acceptable. (No sawtooth hangers or such.) If submitting unframed canvas, edges should be painted or finished. No reproductions, no giclées, and **no wet canvases** are allowed. The **entries may not have been exhibited** previously in a RAL Juried Members' Show. All artists should clearly mark their name and title on the back of their piece. Entries not meeting the show conditions will not be accepted. RAL retains the right to determine suitability of work for entry in this show. Artists will be required to sign a show agreement to be submitted with their work at registration and also sign it out at the final pick up. (If your work is accepted into this show, you will receive the show agreement.) All **work must remain up** until the end of the show on the pick-up date on Monday, June 29.

Sales: Requests for purchase by interested buyers will be forwarded to the artists by the *City of Rockville* who handles the sales. Please

contact the Rockville Art League president or juried show coordinator for any questions about this. The artist's signature on the Show Agreement also constitutes a commitment to donate 20% of the sale price to the *City of Rockville* for works sold during the show.

Categories of Artwork Include:

- Oils and acrylics
- Watercolors
- Pastels, drawings, and hand pulled prints
- Mixed media, collage, experimental, and original computer-generated art
- Photographs
- Sculpture and ceramics

Awards:

- Best in Show (cash prize)
- First, Second, Third in all categories (cash prizes)
- Honorable Mention at Judge's Discretion

Schedule:

- Open now until April 2 - online submissions only with JotForm entry
- **April 2- deadline for all submissions**
- April 20- notification sent out
- May 11- drop-off /delivery of accepted pieces at Glenview
- May 14- Walk through with judge, 6:30pm
- May 17 - Opening Reception, 1:30-3:30 pm, awards at 2:00pm
- June 29 - Pick up of artwork, 11:30am-1pm and 5-6:30pm

Delivery of accepted works: Monday, May 11, 11:30 am-1:00 pm and 5-6:30 pm at Glenview Mansion Art Gallery, 2nd floor. **Glenview Mansion** is located at 603 Edmonston Drive, Rockville, MD 20850. You or your designee must check your work in with the volunteer and a \$10 show fee will be collected along with the signed show agreement.

Walk-through with judge Ruth Lozner:

Thursday, May 14, 6:30 pm. Light refreshments at 6:15 pm

Opening Reception: Sunday, May 17, 1:30-

3:30 pm. Light refreshments. Awards at 2:00 pm. Please invite you friends and family to see the show.

Final Pick Up: Monday, June 29, 11:30 am –

1:30 pm and 5:00 – 6:30 pm. Please sign your work out with the volunteer. You or your designee must pick up your work on this date and we ask that you comply with these hours and rules. There is no storage available. **Please note:** if accepted, your work must remain in the show until pick-up on Monday, June 29.

We need volunteers to help with registration, hanging and labeling the artwork and with the reception. We rely on our volunteers to make these shows successful and appreciate your support. A *Sign-up Genius* form will be available for you to see the times, dates and requirements as we get closer.

Online form: register your work *online only*. Submissions of up to 2 pieces per artist will be accepted by **Thursday, April 2**. One form per artwork.

Please click on the JotForm to enter:
<https://form.jotform.com/200403901793146>

Questions regarding the show? Need help or support with the entry process?

Please contact:

Lisa Sieg: jshows@rockvilleartleague.org

Patrick Sieg: president@rockvilleartleague.org

Critique by Penny Krittr

Darks – Defining and Dramatic

In past columns, there have been discussions about what constitutes a “dark” value. Here’s a quick recap and then you’ll get some new ideas on how to use them *strategically*.

Dark values generally run from here to here:



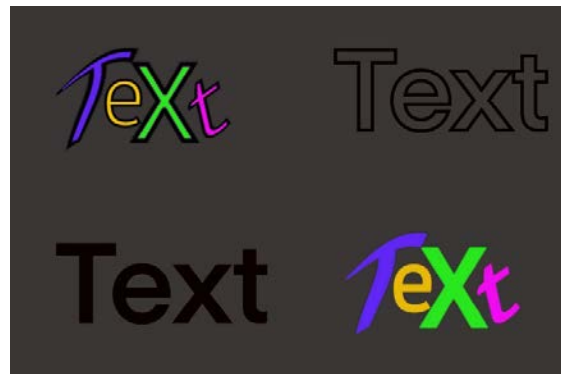
Hopefully your monitor is calibrated near mine and you see that *the tops of each swatch are slightly different*. The left swatch has a slight blue cast, the middle one is pure gray (unsaturated) and the right one has a slight red/brown cast. If you can’t see it on your screen, try copying the boxes and printing them out.

Darks can be subtle or powerful. It just depends on what they sit next to! In the image below, all three of the swatches are right next to each other. That makes a “quiet” passage – the transition is barely noticeable. At the top, each color is softly blended into the next one, and the soft edges blur the transition. At the bottom, the hard edges between each swatch remain, and the change is much more apparent, but even then, it’s more of a *nudge* than a *pow*.



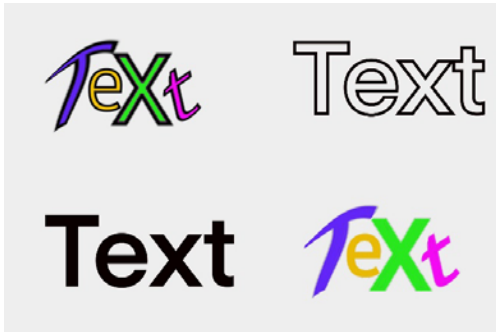
The most powerful tool an artist has is to use big value contrasts with the lightest light right next to the darkest dark. If that’s too little of a contrast, put a brighter color against a dull background – then use or don’t use a big value contrast. Think about this as you look at the two images below.

Sometimes it works, sometimes it’s overkill. In the dark box below, the plain black words “text” aren’t really visible, but the colored versions make a nice statement. Of course, the “text” in the upper left has a black background surrounding each letter, but that doesn’t really make much of a difference. None of these options is always right or wrong. It just means you have lots of options about whether to make consecutive shapes more or less obvious to the viewer. For your center of interest, use both a big value contrast and a bright shape against something more neutral. Or use just one of those elements to make a quieter statement.



So let’s leave everything else the same except the version below has a white background. Even in this small version, so much white makes a glare that hurts my eyes. Maybe if the images were 4 feet wide by two feet tall, the viewer might have a completely opposite opinion. Whether you agree or not, you are

right. Everybody gets to have their own opinions!



Another characteristic of black is that a large shape always looks heavier, stronger or more *menacing* than the same size shape that is a lighter value. In the first image below, most people get a sense of the black shape falling and crushing the eggs below, with the large white egg being the first casualty.



Now let's take a closer look at using a dark outline to make specific parts of a composition more prominent or well defined. The image below is fairly photo-realistic. The pink flowers are more visible than the greenery.



In the next image where the only difference is a swap between the black and white shapes, most people think the "stronger" black egg is valiantly holding up the white shape!



Adding a black outline to the stems, buds and a few leaves in the image below suddenly changes the focus away from the flowers! The flowers and leaves look three dimensional in the image above. With the addition of the outlines below, the shapes appear more flattened and closer to artwork you might find in a graphic novel.



A great way to experiment with all these techniques is to take an image and put it into any app that works with photos. Be sure to add a new layer. Then experiment safely to try lots of different options!

If you'd like a gentle critique of your work, email me a photo at pennykritt@aol.com.

For classes or private lessons, contact Penny at 301/989-1799
©Penny Kritt 2020

MEMBER NEWS



Vantage Point Paintings by **Sally Davies**
February 20 - May 23, 2020

Thursday, March 19, 5:30 - 7:30 pm
Artist's Reception

Thursday, April 23, 5:30 - 6:30 pm
Artist Gallery Walkthrough & Talk
Free Tickets: marylandhall.org/reception-galleries

Maryland Hall, Openshaw Balcony Gallery
801 Chase St, Annapolis, MD 21401

www.marylandhall.org/exhibits/current-exhibits
sallyjkdavies@hotmail.com
www.sallyjkdavies.wixsite.com/sallydaviespaintings

“Vantage Point: Paintings by **Sally Davies**” is a solo exhibit at Maryland Hall in Annapolis, and will be on display till May 23. It can be viewed

during opening hours (M-Sa, 9-5pm) and when the Maryland Ballet, the Maryland Opera and other stage productions perform.

www.marylandhall.org/exhibits/current-exhibits An Artist’s Opening Reception for “Vantage Points” will be held on Thursday, March 19, from 5:30 – 7:30 pm at Maryland Hall, Annapolis. It is free and open to the public.

This is a large exhibit of 50 paintings, and many feature the ballet. Inspired by Degas, Davies sat in on the Ballet Theatre of Maryland rehearsals at Maryland Hall to sketch the dancers on stage and behind the scenes. Her goal was to explore how shapes, pattern, and color influences the perception of movement and time.

Sally Davies’ canvas painting, “Big Cat,” was juried into the Laurel Art Guild Annual Juried Exhibit, on display at Montpelier Arts Center, Laurel, from March 7-29. Opening Reception is Sunday, March 8, 2-4 pm.

Davies’ watercolor painting, “The Look Out,” was juried into the March Open Juried Exhibit at the Art League Gallery, Torpedo Factory, Alexandria. The juror was Carol Fabricatore, and the Opening Reception is April 5, 6:30 - 8 pm.



Sally Davies' watercolor, "Play with Water," was juried into the exhibit, Art on Paper at Circle Gallery in Annapolis, (Maryland Federation of Art) which is on show from April 2-27. Davies' canvas painting, "Row of Benches," was juried into the MFA exhibit "Street Scenes" which runs from Feb 15 - March 31.



TAKOMA WATERCOLOR GROUP
NEW DIRECTIONS IN WATERCOLOR

FEBRUARY 22 - MARCH 27, 2020

OPENING RECEPTION: FEBRUARY 22, 2020, 2-4 PM
DEMO: MARCH 8, 2020, 2 PM

塔可瑪水彩畫會
水彩畫新意象

展期：2020年2月22日至3月27日
開幕茶會：2020年2月22日下午2-4時
示範：2020年3月8日下午2時

CCACC Art Gallery Address: 3918 Gaither Rd., Suite 215, Gaithersburg, MD 20877 Hours: T, W, F & Sat. 12 noon-5 pm



Lisa and Patrick Sieg
Photography and Paintings
Tryst Gallery
March 6 - April 24

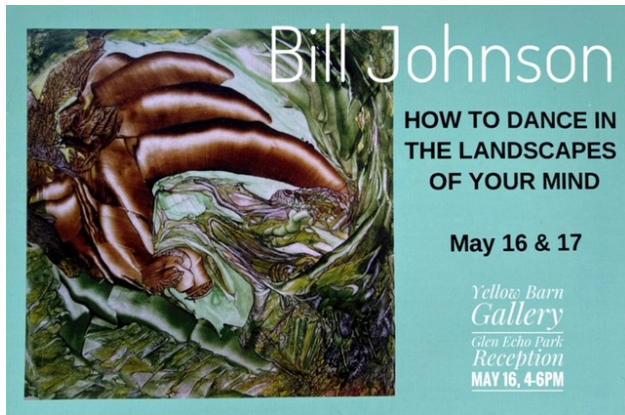
Tryst Gallery
312 East Market St.
Leesburg, VA

RAL members **Barbara Bell**, **Monika Griff** and **Diane Rudzinski** are exhibiting their paintings along with David Daniels, Margot Kabel, Jane Salomon and Michael Shibley at the Chinese Culture and Community Service Center Art Gallery, 3918 Gaither Road, Suite 215, Gaithersburg, MD. "New Directions in Watercolor" is on display on Tuesdays, Wednesdays, Fridays and Saturdays from 12-5 p.m. through March 27, 2020.

One of **Patricia Zannie**'s collages from the "Fauvist Landscape Series" has been juried into the 2020 Garrett Park Invitational Show at the Penn Place Gallery, 4600 Waverly Ave., in Garret Park.



The show runs from March 22 through April 18th.



From early April until Mid-May, you'll find about 20 pieces of **Howard Clark**'s work on exhibit at the Thomas Farm Community Center (700 Falls Grove Drive, Rockville, MD).



From April 5 to May 3, about 25 of Howard's prints will be on exhibit in [LaGallaria @ Ranazul](#) in Fulton, MD.



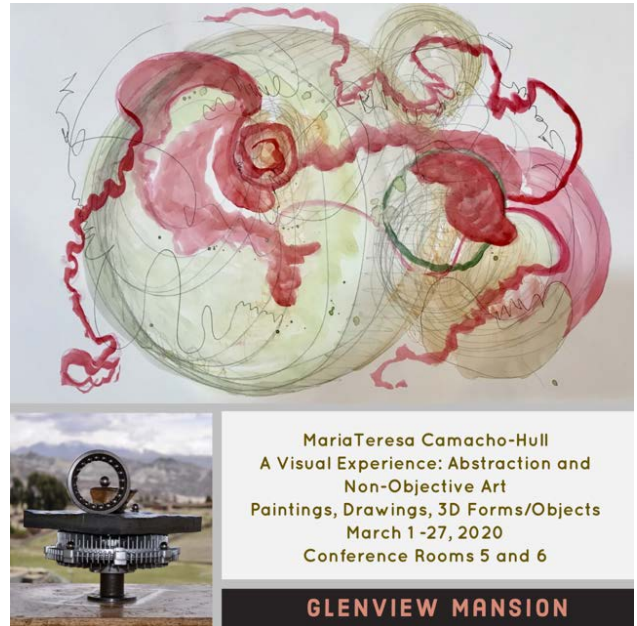
Karen Merkin has a solo exhibition of her oil paintings from March 1-31, 2020. The show, "For The Love of Color", will be on display at the Connie Morella (Bethesda) Library, 7400 Arlington Road, Bethesda, MD 20814.



Sabiha Iqbal is participating in Reflections on the Climate Crisis at the Watergate Gallery and Frame Shop, 2552 Virginia Ave., NW, Washington, DC. Show dates: February 24-April 11. Opening reception February 29, 5-8 pm.



Sabiha Iqbal is participating in a show Human Condition. Exploring the Body as Subject. Athenaeum Gallery, Alexandria, Virginia. <https://www.nvfaa.org/upcoming> February 13-March 22. Opening reception February 16, 4-6 pm.



MariaTeresa Camacho-Hull

On Exhibit March 1-27

Opening reception: March 1, 1:30-3:30pm

A VISUAL EXPERIENCE - ABSTRACTION AND NON-OBJECTIVE ART

Drawings, Paintings, 3D Forms/Objects



Gloria Miotto

ABSTRACT VISIONS

www.gloriamiottoart.com
gloriamiottoart@gmail.com
(202) 445.1159

OPENING RECEPTION
Sunday, April 5, 1:30 - 3:30pm
Room # 5 and # 6

Glenview Mansion Gallery Hours:
Mon., Tues., Wed., Fri., 9:00am-4:30pm;
Thurs. 9:00am-9:00pm
(Gallery closed on official holidays and weekends)

Glenview Mansion
603 Edmonston Drive
Rockville, MD 20851
Phone: 240.314.8660



Multicolor Spirit Struggle of Darkness
Web of Love Forest in the Spring



Elizabeth Steel is very pleased that two of her Statue of Liberty paintings have been selected for inclusion in the City of Gaithersburg's show, "Building Bridges, Connecting Global Roots." Location will be the Activity Center at Bohrer Park, 506 South Frederick Avenue, and the exhibit will run January 24-March 30, 2020.



Six of **Lily Kak**'s paintings have also been selected for the City of Gaithersburg's show "Building Bridges, Connecting Global Roots."

"A Street in Fes, Morocco" by **Chris Luckman** is included in the same exhibit.

Two of **Howard Clark**'s photos (Himeji Castle and The Staircase) are included in an exhibition on "Building Bridges: Connecting Our Global Roots."



Professional Fine Art Restoration and Repair

Have your Fine Art Oil or Acrylic Paintings and Antique Frames Restored or Repaired with Museum Quality Work. Over 30 years in Fine Art Restoration Experience. Studio located in Rockville, Maryland.

For a Consultation at No Cost or Obligation to you, contact:

Abraham Garcia

301-770-5015

abrahamdesigns@hotmail.com

www.AbrahamArtImpressions.com

Building Bridges
Connecting Our Global Roots
at
The Activity Center at Bohrer Park
January 24—March 30, 2020
Reception: Thursday, January 30, 7-8:30PM

Adler—Anderson—Bendersky—Clark—Constant Robinson—Dell’Aria—Eisenberg—Gupta
Johanson—Kak—Koren—Kuchinsky—Luckman—McDonald—Mandel—Markulis—Mayer—Phillips
Rosenbaum—Schiminger—Steel—Stowe—Sinkler—Treadaway—Hoare—Weiblinger—Zoob
Featured artist *Magruder Murray*

Activity Center
at Bohrer Park
506 S. Frederick Ave.
Gaithersburg, MD
301-258-6350

GaithersburgMD.gov

Howard Clark’s work will be at the MD State House of Delegates, also in Annapolis. It opens on February 3 and continues until April 10. His photo of “The Portal” will be on exhibit.

The Compass Atelier

Art classes for beginners and experienced artists
Special workshops Study Abroad
Home of the revolutionary Master Artist Program

TheCompassAtelier.com TheCompassAtelier@gmail.com

Kritt Studio Classes


Beginning Painting classes
Monday, Apr. 14
Classes morning and evening

Beginning Drawing classes
Tuesday, Apr. 20
Classes morning and evening

Advanced Groups and Private Lessons
For more info: call Penny at 301/989-1799

Getting to Know Your Canon DSLR

If you photograph your art for use in applying to future art shows, you may find this item helpful. On Saturday, March 28, **Howard Clark** is planning to teach a class on “Getting to Know Your Canon DSLR.” If you find the plethora of dials, buttons, and menus on your Canon DSLR more than you can deal with..... If you stuck in your camera’s PROGRAM mode wondering how much better your pictures would be if you could master its CREATIVE mode..... Well, help is on the way. The course will run from 9 a.m. to 3:30 p.m. with 30 minutes for a brown-bag lunch. Class size will be limited to eight students. A course fee of \$30 will help to pay the rental fee for the hotel room. If appropriate, the course will be delayed until late April. For additional information, contact HClarkNEMA@gmail.com. A registration form may be found [HERE](#).



A Work of Art by Debra Halprin
Giclée Printing and Photography Service
Create Fine Art Prints of your Artwork
on Watercolor Paper or Canvas

Mastering the Fine Art of Giclée Printing

HalprinArt.com
301-910-4750

email: Debra@HalprinArt.com
in Rockville, Maryland

OPPORTUNITY

The Watercolor Critique Group will be meeting in mid – April. For questions or interest, please RSVP Marija at marijasart@gmail.com. New members are welcome. Our on-going Peer Watercolor Critique Group offers friendly support and insight into watercolor questions.

NEWSLETTER SUBMISSIONS

Is your art included in a show? Have other news you wish to share with RAL members? Please send your submissions by the **15th** of each month for inclusion in the next newsletter, to: newsletter@rockvilleartleague.org



GLENVIEW MANSION CONFERENCE ROOM SHOWS

You can show your artwork in Glenview Mansion for one month if you have received a 1st, 2nd, 3rd or honorable mention award in an RAL juried show. Artists may have both rooms to exhibit in if a second artist doesn't sign up for the same month within two months of the show's start date. The receptions at Glenview mansion are 1:30-3:30 PM on the Sunday after hanging. Preferred drop off and pick up times for Glenview Shows are from 9 am to 12 noon. Drop off/pickups are Mondays (unless a holiday). If you are unavailable on the date for pickup, please arrange for someone to pick up for you. There is no room to store your artwork at the Mansion. If you are unable to drop off/pick up on the assigned dates and you can't find someone else to drop off/pick up for you, please choose a month in which you can make those dates.

For artwork delivery, please unwrap your work and take the wrappings with you. Please bring pliers (needle nose are easy to work with). You may use the hand truck that is at the Mansion to move your artwork from your vehicle. There is no staff at the mansion available to help you move your artwork into the conference rooms. You are responsible for hanging your own artwork, with help from the Mansion staff. If you don't have labels for your work, please fill out the RAL cards that will be available. If you print your own, print them on card stock. Do not use the sticky Avery labels, unless you adhere them to foam core or card stock. **Contact Diane Jeang, Glenview Member Show Coordinator, (301) 871-1589 or chickendoc44@gmail.com with questions.**

Monday delivery and hanging: 12PM–2PM & 5-7PM/ Sunday Gallery Opening: 1:30—3:30PM
Monday Pick up: before 11AM

Glenview Mansion Schedule 2020				
	Member(s)	Mon &/or Tues Deliver hours	Sunday Gallery Opening 1:30-3:30	Monday Pick-up
MARCH	Teresa Camancho-Hull	Feb. 24 (noon-6:30pm), Feb. 2225 (9-4:30pm)	Sunday, March 1, 1:30-3:30 pm	Mon., March 30 9-11am
APRIL	Gloria Miotto	March 30 (noon-4:30pm) Mar. 31 (9am-4:30pm)	Sunday, April 5, 1:30-3:30pm	Mon. May 11, 9-11am
MAY/JUNE	RAL Spring Show	Mon., May 11(11-30-1pm and 5-6:30pm)	Sunday, May 17 (1-30-3:30pm)	Mon., June 29, 11-30-1pm and 5-6:30pm
JULY	Suzanne Frisbie/ Norda Kittrie			
AUG/SEPT	Board Members Show			
SEPT/OCT	Susan Dunnell/ Cathy McDermott			
OCT/NOV	Stephanie Gustavson/ Sue Moses			
DEC	RAL Winter Show			
2021	Member(s)	Mon &/or Tues Deliver hours	Sunday Gallery Opening 1:30-3:30	Monday Pick-up
JAN				

Rockville Art League Newsletter April 2020

FEB				
MARCH				

For additional information for members hanging in the conference rooms, please refer to the RAL web page: <http://www.rockvilleartleague.org/glenview.pdf>. At least one platter of finger foods (cookies, crackers/cheese, veggies/dip) should be supplied by the RAL artist on the day of the opening reception. Cups/napkins/water provided by the City of Rockville for opening receptions. The Mansion will be open at 1 pm for the artist on the day of the opening reception.

Artists in rooms 5 and 6 are responsible for hanging their shows but will have assistance as needed.

RAL Ongoing Show List

Twinbrook Library – 202 Meadow Hall Drive, Rockville, Maryland

Shows for the library run from 1st of the month to the end of the month for 1 month shows. 5 medium to large paintings, Contact person: Christine Lundy, 240-777-0252.

Christine.lundy@montgomerycountymd.gov

<u>Name</u>	<u>From</u>	<u>To</u>
Open	Mar. 1, 2020	May 1, 2020

Thomas Farm Community Center – 700 Falls Grove Drive, Rockville, Maryland

12-16 medium to large paintings, Contact person: Melinda Norton (240) 314-8842.

email: mnorton@rockvillemd.gov

<u>Name</u>	<u>From</u>	<u>To</u>
Open	Mar. 15, 2020	May 15, 2020

Marilyn J. Praisner Library – 14910 Old Columbia Road, Burtonsville, Maryland

10 small to medium or 5-6 large paintings (10 hanging chains), Contact person: (240) 773-9455, Vera Ramaty

<u>Name</u>	<u>From</u>	<u>To</u>
Open	Mar. 15, 2020	May 15, 2020

RAL BOARD OF DIRECTORS

Name	Position	E-mail
Patrick Sieg	<i>President</i>	president@rockvilleartleague.org
Lisa Sieg	<i>1st Vice President</i>	jshows@rockvilleartleague.org
Vacant	<i>2nd Vice President</i>	oshows@rockvilleartleague.org
Nighat Ahmed	<i>Program Coordinator</i>	programs@rockvilleartleague.org
Lisa Sieg	<i>Volunteer Coordinator</i>	volunteer@rockvilleartleague.org
Paula Zeller	<i>Membership</i>	membership@rockvilleartleague.org
Rob Gale	<i>Treasurer</i>	treasurer@rockvilleartleague.org
Cathy McDermott	<i>Secretary</i>	secretary@rockvilleartleague.org
Susan Dunnell	<i>Newsletter Editor</i>	newsletter@rockvilleartleague.org
Liliane Blom	<i>Liaison Officer</i>	liaison@rockvilleartleague.org
Dave Allen	<i>Publicity/marketing</i>	publicity@rockvilleartleague.org
Eric Goss	<i>Communications</i>	communications@rockvilleartleague.org
Lisa Sieg	<i>Hospitality</i>	hospitality@rockvilleartleague.org
Diane Jeang	<i>Monthly Member Shows</i>	mshows@rockvilleartleague.org
Patria Baranski	<i>Historian</i>	historian@rockvilleartleague.org
Michael Auger	<i>Webmaster</i>	webmaster@rockvilleartleague.org
Eileen Mader	<i>Founder</i>	

Rockville Art League
P.O. Box 4026
Rockville, MD 20850

