



RockvilleArtLeague.org

Vol. XXIX No. 4

December 2019

**NEXT MEETING: Thursday, December 12, 6:30PM**  
**Members' Show Gallery Walkthrough with Judger Kris Loya**

### **Message from the President, Patrick Sieg**

Dear Rockville Art League artists,

Winter is almost here and, along with shorter days and cooler temperatures, we will be hosting our Juried Members' Winter Show. There are more show details later in this newsletter.

There are a variety of reasons to enter one of our Rockville Art League Juried Members' Shows and these come to mind:

- To share our creativity and beautiful work.
- To support our organization.
- To be part of our vibrant art community.
- To have fun.
- To win some recognition.
- To maybe sell a painting.

Whatever your reasons, I am gratified that so many of you entered work.

We had 207 entries and that is a record for our league.

Thank you.

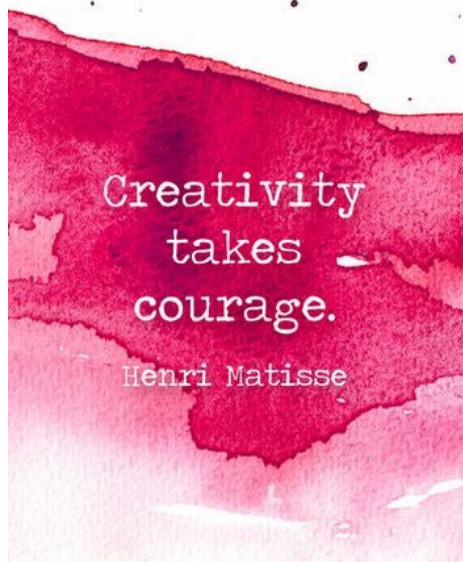
And the work, all of it, was outstanding.

When you have so many entries added to the top of the funnel, then the work that flows through is even more beautiful. When I mention "flows through" I am talking about the roughly 110 pieces that were accepted and will fit into the gallery space at the Glenview Mansion.



I truly wish that every work would flow through. Unfortunately, when there are many entries and only so many will fit, then there are also many pieces that cannot be accepted. And there were many beautiful pieces in that group.

I understand how it feels to have a piece, that I created, excluded. Being juried out of a show hurts and also please understand that the only artist that was never excluded from a juried show was the artist that never entered a juried show.



I hope that we can all focus on our creative journey and not only the destination of being selected for an art show.

- We had a vision for our art.
- We used our experience and talent to make that vision a reality.
- We learned something along the way as we solved problems and exercised our craft.
- We were willing to take a risk by entering a juried show.

When you do these things then you are a success and by being an artist you are a winner.

Lisa Sieg has worked tirelessly to organize this show and I know it will be terrific. The art will be dropped off, judged, hung and labeled, all in time for our opening reception on Sunday, December 8. A "Sign-Up Genius" of volunteer opportunities for help staging our show is available and I hope that you will answer that call.

Our judge, Kris Loya, spent many hours agonizing over the difficult job of selecting the work to be included. She will review these pieces in person when deciding on the award winners.

Our December meeting will be a gallery walk-through of our show with our judge, Kris Loya at 6:30pm on Thursday, December 12. We will start with refreshments at 6:15 pm.

We were fortunate to secure sponsorship support from the Northwest Federal Credit Union and their contribution will allow us to increase our award prizes this show, by roughly 50%.

In our November meeting we were fortunate to have mixed media, semi-abstract artist Jan Rowland presenting to our group. Her work and presentation were excellent, and I am amazed at how she thinks, works and produces such beautiful work.



I am looking forward to 2020. Our first meeting in the new year will be on Thursday, February 6, and our speaker will be artist and educator Ruth Lozner. Her

collaborative paintings, assemblage sculptures and photo collages were on display at the mansion in August and September and were fun, beautiful and memorable.

In our meeting, Ruth will share her insights on the important topic of how artists can better communicate regarding their artwork. Her presentation will give us all something to talk about.

Finally, I hope everyone has the happiest of holiday seasons.

Thank you for being a member of the Rockville Art League.

Patrick Sieg  
President

## Rockville Art League 2020 Speaker Series

Feb 6th, 2020

**Ruth Lozner**

Talk about, "How to talk about your Art"

March 5th, 2020

**David Allen**

Talk about Abstract Art

April 2nd, 2020

**Kris Loya**

Talk about social media artists, artist statement and getting into juried shows.



**Better Together!**

Don't miss out on our members-only exhibition opportunities or the chance to support the events, networking, and other benefits that can help you grow as an artist. Renewing/joining is easy:

- Pay \$40 via PayPal. Go to "Membership" at <http://www.rockvilleartleague.org/> and click "Pay Now."

OR

- Mail your \$40 check, payable to Rockville Art League, to:

Paula Zeller, RAL Membership Chair  
627 Crown Park Avenue  
Gaithersburg, MD 20878

Not sure about your membership status?  
Please email

[membership@rockvilleartleague.org](mailto:membership@rockvilleartleague.org) with this or any other questions.

Thank you to the many members who have renewed or rejoined, and to all our new members!

A warm welcome to the following new members, who joined in October/November!

Antonina Enalieva  
Anna Ganelina  
Zubair Iqbal  
Susan Langley  
Randi Neff  
Maritza Newman  
Alexandra Treadaway  
Freddi Weiner  
Zhuangfang Yi

## RAL Juried Members' Winter Show

### Glenview Mansion

**Dec. 8, 2019 – Jan. 24, 2020**

We had record breaking submissions of high caliber artwork for our *RAL Juried Members' Winter Show*. The bar continues to be raised, thanks to your creativity, artistry and skills. Please know that all submissions received careful consideration by our juror Kris Loya who had to make difficult choices in selecting from such a large pool of quality entries.

Acceptances were sent out to members on Friday morning, November 15. Please refer to that notice. Thank you to all artists who entered our show. If you did not see your name on the list, your work was not accepted into this show and cannot be included at this time. Please consider other show opportunities offered to our members later in the year.

If your work was accepted into this show, congratulations! By now you should have seen the acceptance list and also received *the Show Agreement* sent to the email you provided with your entry.

Specifics about the show for *accepted* artists include:

- **Entry Fee:** A \$10 show fee per artist will be collected when *accepted* artwork is dropped off along with the Show Agreement which has been emailed out to accepted artists.
- **Delivery of accepted works:** MONDAY, December 2, 11:30 am-1:00 pm and 5-6:30 pm at Glenview Mansion Art Gallery, 2<sup>nd</sup> floor. **Glenview Mansion** is located at 603 Edmonston Drive, Rockville, MD 20850. You or your designee must check your work in with the volunteer and a \$10 show fee will be collected along with the signed Show Agreement.
- **Sales:** Requests for purchase by interested buyers will be forwarded to the artists by the Rockville Art League president or juried show coordinator. The artist's signature on the Show Agreement also constitutes a commitment to donate 20% of the sale price to the City of Rockville for works sold during the show.
- **Final Pick Up:** Monday, January 27, 11:30 am – 1:30 pm and 5:00 – 6:30 pm. Please sign your work out with the volunteer. You or your designee must pick up your work on this date and we ask that you comply with these hours and rules. There is no storage available.

#### **For all members:**

We need volunteers to help with registration, hanging and labeling the artwork and with the reception. We rely on our volunteers to make these shows successful and appreciate your support. A *Sign-up Genius* form is available for you to see the times, dates and requirements:

<https://www.signupgenius.com/go/4090C49A5AC23ABFD0-raljuried3>

**Opening Reception:** Sunday, December 8, 1:30- 3:30 pm. Light refreshments. Awards at 2:30 pm. Please invite you friends and family to see the show. Everyone is welcome! Hope to see you there.

**Gallery Walk-through with judge Kris Loya:** Thursday, December 12, 6:30 pm.

Light refreshments at 6:15 pm. This is in place of the December monthly meeting. Please join us for an informative and interesting evening.

Looking ahead and please note – we do not have a monthly meeting in January. Please mark your calendars for Thursday, February 6 to hear Ruth Lozner’s interesting presentation on how to talk about your own art. We look forward to seeing you at Glenview in the near future.

## Critique by Penny Kritt

### Beautiful Browns

Using shades of brown can be both fabulous and very problematic. Especially if you do landscapes or still life paintings, browns are often a fairly large percentage of the “real estate”. With a little advance planning (yes, I know, it’s that whole *planning* thing again), you can overcome the hurdles that browns often create.

Why do mostly brown compositions rarely work? An example of a painting that does everything right is below. Understanding how that happens is the key to getting the best results.



Sentinel of the Prairie/Watercolor on Paper  
By Cynthia M. Cohen

Cynthia did a masterful job of using every device possible to give a viewer a *painterly* experience based on a photo she took. Both the prairie dog in the front and the herd of bison in the back have distinct personalities that make us linger to enjoy them. Look at the sense of vastness she created between the lone prairie dog and the bison in the distance. Let’s discuss the devices she used to create such a unique composition.

First, all artwork depends on a pleasing use of shapes. Let’s reduce the image above to grayscale (Fig. 1) and see what’s going on. For clarity, at the top left, I added boxes that show dark, mid tone and light values so we can simply the value pattern Cynthia created.

As often happens with mostly brown artwork, this is mostly mid tones. I also inserted a black rectangle in the middle so you can see that there is actually no pure black! Most compositions rely on putting very dark values right against the lightest ones to create the greatest contrast, but that’s hard to do with so many mid tones. Cynthia used that concept well by having the white horns of an animal overlap its dark fur. She did the same around the eyes and noses of a few animals. That gives each of them a unique personality because you can see where they are looking. She also used the white chest of the prairie dog against the darker parts of his fur to make this little guy stand out amid the larger animals.

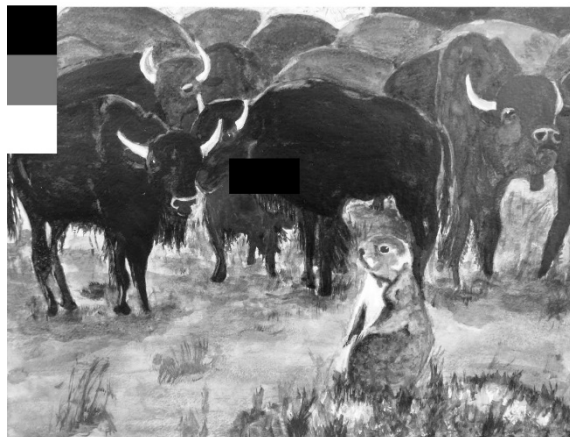


Figure 1

Take a moment to study the shapes of the black and white version. Then look back at the original. Look at how those colors glow! Cynthia’s secret was her use of *contrasting color temperature*.

First, let’s start with an artist’s description of various brown colors.



Figure 2

In Fig. 2 above, each of the browns in the top row has more red than their counterparts in the bottom row. Thus, we can use the artist’s vocabulary to describe the upper browns as warmer than the cooler ones below. The two swatches on the left each have more yellow than the other four. The middle two have more red than the ones on either side. And the colors on the right each have more blue. This description by *temperature* is a relative one. By definition, all browns are tertiary, meaning that they have some combination of all three

primaries (red, yellow and blue). But by varying the ratios, you can create an infinite variety of “browns”.

Now let’s look at the values (light to dark) of the swatches above. It may surprise you, but each upper swatch is almost exactly the same value as the lower one. See Fig. 3 below.



Figure 3

In Fig. 4 below, you see swatches of the “brown” colors that Cynthia used. Look at how interesting those colors are. The upper left has enough blue that it moves into lavender. The lower left leans toward a glorious burgundy color. And Fig. 5 is the gray scale version which confirms that, as usual, most of the values are square in the mid tone range.

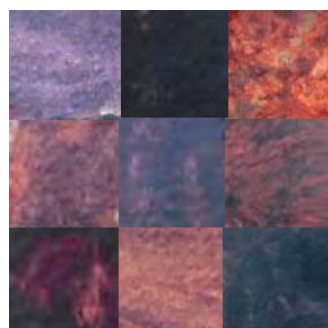


Figure 4

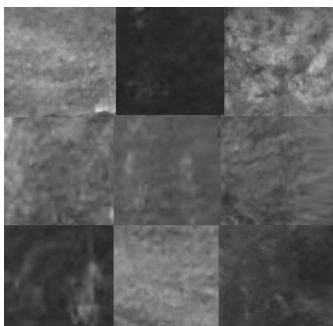


Figure 5



Figure 6

Fig. 6 shows how *varying the temperature* of browns can take a quiet and unimportant part of a composition interesting enough to add depth and variety to a shape that might otherwise be a boring large brown “herd”. The range of browns adds a little separation to the individual animals.

The trick is not to rely on the standard tubes of brown paint. Sepias and umbers are fine in limited doses, but mix in other colors to get that painterly look. It means your artwork won’t look like a photo, which painters want!

*If you’d like a gentle critique of your work, email me a photo at pennykritt@aol.com.*

For classes or private lessons, contact Penny at 301/989-1799

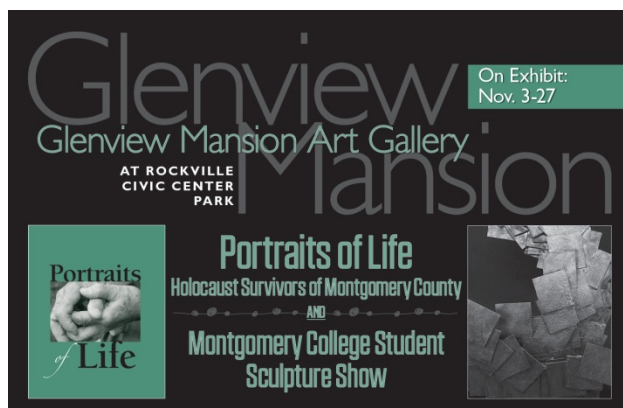
©Penny Kritt 2019

## MEMBER NEWS



A Photography Exhibition by **Darien Henson** and **Tyler Henson** on display in rooms 5 and 6 at Glenview Mansion until November 27. Don’t miss it!

And in the main gallery, *Portraits of Life*, an exhibit combining evocative and inspiring portraits with narrative, documenting the personal histories of nearly forty Holocaust survivors who have lived in and around Montgomery County, Maryland. (This program is managed by Montgomery College’s Paul Peck Humanities Institute with support from the Montgomery College Foundation). In combination with these powerful portraits, the sculptures of Montgomery College Sculpture Students are on display throughout the main gallery. One of our RAL members, **Sandra Franklin Ehlers**, has several pieces on display as part of this stunning exhibition.




**On Exhibit**  
**November 3-27, 2019**

**Portraits of Life**  
Holocaust Survivors of Montgomery County  
**and Montgomery College**  
**Student Sculpture Show**

Join us for a gallery opening reception and meet the artists from 7-9 p.m. on **Sunday, Nov. 3**. Event is free and open to the public. Artwork by Darien Henson and Jyker Henson (Rockville Art League award winning artists) will be on display in Conference Rooms 5 and 6.

For information, call 240-314-8681 or 240-314-8660. For recorded directions, call 240-314-5004. *Glenview Mansion Art Gallery is wheelchair accessible. Gallery Hours: Mon., Tues., Wed., and Fri., 9 a.m.-4:30 p.m.; Thurs., 9 a.m.-9 p.m. Gallery closed on official city holidays.*

Glenview Mansion  
Art Gallery  
at Rockville Civic Center Park  
603 Edmonston Drive  
Rockville, MD 20851



These compelling exhibitions are on display **November 3- 27.**

Glenview Mansion (603 Edmonston Dr./Rockville) is open MTWF, 9-4:30 and TH 9-9. Beyond the opening reception, Glenview is closed to the public weekends and on official holidays. Please see show cards for details.

Sally K. Davies' painting, "Parenting" was juried into the 4<sup>th</sup> Biennial Maryland Regional Juried Art Exhibit University of Maryland University College Gallery, Adelphi, MD Juror: Gretchen Schermerhorn, Artistic Director, Pyramid Atlantic, Hyattsville, and Philip Hutinet, Publisher, East City Art, Baltimore, MD. The exhibit runs from Dec 1, 2019 – Mar 15, 2020 and the Artist Reception is on Thursday, December 12.



Her Acrylic Mosaic Painting, "My Reflection in a Digital Age," was juried into the 31<sup>st</sup> Annual Prince George's County Juried Exhibit Montpellier Arts Center Main Gallery, Laurel, MD (Nov 2 – Dec 31, 2019) Juror: John Coppola.



EMBASSY OF CHILE +  
CORCORAN CONTINUING EDUCATION  
BUILDING COMMUNITY ON CLIMATE CHANGE

**Sabiha Iqbal** and **Jasmin Smith** will be part of a group show at the Embassy of Chile. We invite you to attend the opening of our exhibition, *Building Community on Climate Change*, this **November 21st at 6 pm!**

This December, Chile will host the 25th United Nations Climate Change Conference (COP-25). To commemorate this event, the



Embassy of Chile to the United States has invited students from the Corcoran Continuing Education program to exhibit works inspired by our planet's climate and the effects of our collective human impact. Featuring both fears and hopes for our future, community artists attending the Advanced Abstract Painting classes have created works that highlight Earth's unique beauty.

Come meet our student artists and instructor, hear them speak about their creative processes, and enjoy light refreshments as you explore their work at our free event. Doors will open at 6 pm. We look forward to seeing you there!

*Due to security reasons at the embassy, we please ask you to RSVP by November 17th.*  
[https://www.eventbrite.com/e/building-community-on-climate-change-exhibition-opening-tickets-78612487065?aff=odeimcmailchimp&mc\\_cid=eb4f6a36bf&mc\\_eid=306aa1a297](https://www.eventbrite.com/e/building-community-on-climate-change-exhibition-opening-tickets-78612487065?aff=odeimcmailchimp&mc_cid=eb4f6a36bf&mc_eid=306aa1a297)

Unable to attend the opening? ***Building Community on Climate Change*** will be exhibited at the Embassy of Chile from **November 22nd through January 23rd**. This exhibition is free and open to the public during business hours.

Embassy of Chile  
1732 Massachusetts Ave. NW  
Washington DC 20036

### **“The Viewer as the Partner”**

MariaTeresa Camacho-Hull  
An Exhibition of Paintings  
October 15, 2019 – January 15, 2020  
Thomas Farm Community Center



“Time’s Rhythm,” detail, mixed media on acid-free paper, 2019, by MariaTeresa Camacho-Hull

**Howard Clark’s** abstract image – “The Portal” – is included in an exhibit organized by the Maryland Photography Alliance that runs from Nov. 1 to Jan. 21 at the Bohrer Center in Gaithersburg. Also, Howard has two photos on exhibit at the GWC Artwork Gallery in Frederick.



**Leslie M. Kraff** has two paintings at the Oasis Art Gallery in Montgomery Mall, 7125 Democracy Blvd., Bethesda. The show runs through December 6. Stop by to see this wonderful exhibit by Members of Oasis.



**Larry Levine's** photography exhibit, "Creativity with a Capital WHY?" is at the Sandy Spring Museum in Sandy Spring, MD, through Nov. 24, 2019. The exhibit is a collection of photographic portraits of more than 30 talented people at work,

along with quotations from each that provides insight into why they do what they do.

Sandy Spring Museum, 17901 Bentley Road, Sandy Spring, MD 20860

For more information:

<https://www.larrymarclevinephotos.com/>

Museum hours: Sunday: 11am- 4pm;

Thurs.: 10am- 8pm; Fri.: 10am- 5pm



**Congratulations to all artists** who had work in the *Rockville Art League Member's Show at Brookside Gardens Visitor's Center* **October 14 - November 10.**

This nature-themed exhibition in a variety of mediums and styles by 55 of our artists received rave reviews by the community. Also, we are happy to report that 8 pieces sold during this show. Thank you for sharing your artistry. If you were able to see it, you will agree that it was quite a beautiful show. (Artists featured in this collage - left to right and clockwise: Ruth Uithol, Stacy Yochum, Susan Dunnell, Sue Moses, Bob Hackman, Kathy Tynan, Simin Parvaz, Paola Luther, Sally Drew and Beverly Valdez.)

## Professional Fine Art Restoration and Repair

Have your Fine Art Oil or Acrylic Paintings and Antique Frames Restored or Repaired with Museum Quality Work. Over 30 years in Fine Art Restoration Experience. Studio located in Rockville, Maryland.

For a Consultation at No Cost or Obligation to you, contact:

**Abraham Garcia**

301-770-5015

[abrahamdesigns@hotmail.com](mailto:abrahamdesigns@hotmail.com)

[www.AbrahamArtImpressions.com](http://www.AbrahamArtImpressions.com)



**The Compass Atelier**  
Art classes for beginners and experienced artists  
Special workshops      Study Abroad  
Home of the revolutionary Master Artist Program



[TheCompassAtelier.com](http://TheCompassAtelier.com)    [TheCompassAtelier@gmail.com](mailto:TheCompassAtelier@gmail.com)

### Kritt Studio Classes

Drawing Seascapes classes  
Monday, Jan. 13  
Classes morning and evening

Painting Landscape classes  
Tuesday, Jan. 14  
Classes morning and evening

Painting Waterfalls & Rocks Workshop  
Saturday, March 7, 10-3 pm

**Advanced Groups and Private Lessons**  
For more info: call Penny at 301/989-1799



**A Work of Art** by Debra Halprin  
Giclée Printing and Photography Service  
Create Fine Art Prints of your Artwork  
on Watercolor Paper or Canvas

Mastering the Fine Art of Giclée Printing

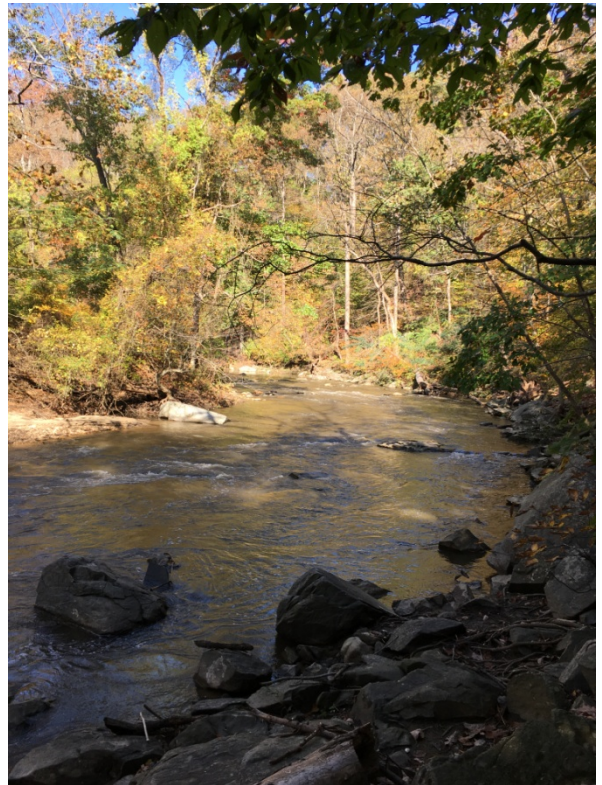
[HalprinArt.com](http://HalprinArt.com)  
301-910-4750

email: [Debra@HalprinArt.com](mailto:Debra@HalprinArt.com)  
in Rockville, Maryland

## NEWSLETTER SUBMISSIONS

Is your art included in a show? Have other news you wish to share with RAL members? Please send your submissions by the 15<sup>th</sup> of each month for inclusion in the next newsletter, to:

[newsletter@rockvilleartleague.org](mailto:newsletter@rockvilleartleague.org)



**GLENVIEW MANSION CONFERENCE ROOM SHOWS**

You can show your artwork in Glenview Mansion for one month if you have received a 1<sup>st</sup>, 2<sup>nd</sup>, 3<sup>rd</sup> or honorable mention award in an RAL juried show. Artists may have both rooms to exhibit in if a second artist doesn't sign up for the same month within two months of the show's start date. The receptions at Glenview mansion are 1:30-3:30 PM on the Sunday after hanging. Preferred drop off and pick up times for Glenview Shows are from 9 am to 12 noon. Drop off/pickups are Mondays (unless a holiday). If you are unavailable on the date for pickup, please arrange for someone to pick up for you. There is no room to store your artwork at the Mansion. If you are unable to drop off/pick up on the assigned dates and you can't find someone else to drop off/pick up for you, please choose a month in which you can make those dates.

For artwork delivery, please unwrap your work and take the wrappings with you. Please bring pliers (needle nose are easy to work with). You may use the hand truck that is at the Mansion to move your artwork from your vehicle. There is no staff at the mansion available to help you move your artwork into the conference rooms. You are responsible for hanging your own artwork, with help from the Mansion staff. If you don't have labels for your work, please fill out the RAL cards that will be available. If you print your own, print them on card stock. Do not use the sticky Avery labels, unless you adhere them to foam core or card stock. **Contact Diane Jeang, Glenview Member Show Coordinator, (301) 871-1589 or [chickendoc44@gmail.com](mailto:chickendoc44@gmail.com) with questions.**

Monday delivery and hanging: 12PM–2PM & 5-7PM/ Sunday Gallery Opening: 1:30—3:30PM  
Monday Pick up: before 11AM

<b>Glenview Mansion Schedule</b>				
<b>2019</b>				
	Member(s)	Mon &/or Tues Deliver 12-4	Sunday Gallery Opening 1:30-3:30	Monday Pick-up 9:30am-noon
OCT/NOV	Tyler Henson/Darien Henson	10/28-29/19	11/3/19-Reception 7-9pm*	Friday*pick-up 11/22/19
DEC	RAL Winter Show	12/2/19 (drop off hours 11:30-1 & 5-6:30pm	12/8/19	TBD
<b>2020</b>				
	Member(s)	Mon &/or Tues Deliver 12-4	Sunday Gallery Opening 1:30-3:30	Monday Pick-up 9:30am-noon
JAN/FEB	RAL Winter Show/Student Art Show			
FEB/MARCH	Student Art Show			
MAR/APR	Teresa Hull/Norda Kittrie			
MAY/JUNE	RAL Spring Show			
JUNE/JULY				
AUG/SEPT	Board Members' Show			
SEPT/OCT	Susan Dunnell/Cathy McDermott			

**Rockville Art League Newsletter December 2019**

OCT/NOV	Stephanie Gustavson/ Sue Moses			
DEC	RAL Winter Show			

For additional information for members hanging in the conference rooms, please refer to the RAL web page: <http://www.rockvilleartleague.org/glenview.pdf>. At least one platter of finger foods (cookies, crackers/cheese, veggies/dip) should be supplied by the RAL artist on the day of the opening reception. Cups/napkins/water provided by the City of Rockville for opening receptions. The Mansion will be open at 1 pm for the artist on the day of the opening reception.

**RAL Ongoing Show List**

**Twinbrook Library – 202 Meadow Hall Drive, Rockville, Maryland**

Shows for the library run from 1<sup>st</sup> of the month to the end of the month for 1 month shows. 5 medium to large paintings, Contact person: Christine Lundy, 240-777-0252.

[Christine.lundy@montgomerycountymd.gov](mailto:Christine.lundy@montgomerycountymd.gov)

<b><u>Name</u></b>	<b><u>From</u></b>	<b><u>To</u></b>
Open	Dec. 1, 2019	Jan. 1, 2020

**Thomas Farm Community Center – 700 Falls Grove Drive, Rockville, Maryland**

12-16 medium to large paintings, Contact person: Melinda Norton (240) 314-8842. email: [mnorton@rockvillemd.gov](mailto:mnorton@rockvillemd.gov)

<b><u>Name</u></b>	<b><u>From</u></b>	<b><u>To</u></b>
Teresa Hull	Oct. 15, 2019	Jan. 15, 2020
Open	Jan. 15, 2020	Mar. 15, 2020

**Marilyn J. Praisner Library – 14910 Old Columbia Road, Burtonsville, Maryland**

10 small to medium or 5-6 large paintings (10 hanging chains), Contact person: (240) 773-9455, Vera Ramaty

<b><u>Name</u></b>	<b><u>From</u></b>	<b><u>To</u></b>
Open	Oct. 15, 2019	Jan. 15, 2020
Open	Jan. 15, 2020	Mar. 15, 2020

## RAL BOARD OF DIRECTORS

<b>Name</b>	<b>Position</b>	<b>E-mail</b>
Patrick Sieg	<i>President</i>	<a href="mailto:president@rockvilleartleague.org">president@rockvilleartleague.org</a>
Lisa Sieg	<i>1<sup>st</sup> Vice President</i>	<a href="mailto:jshows@rockvilleartleague.org">jshows@rockvilleartleague.org</a>
Vacant	<i>2<sup>nd</sup> Vice President</i>	<a href="mailto:oshows@rockvilleartleague.org">oshows@rockvilleartleague.org</a>
Nighat Ahmed	<i>Program Coordinator</i>	<a href="mailto:programs@rockvilleartleague.org">programs@rockvilleartleague.org</a>
Lisa Sieg	<i>Volunteer Coordinator</i>	<a href="mailto:volunteer@rockvilleartleague.org">volunteer@rockvilleartleague.org</a>
Paula Zeller	<i>Membership</i>	<a href="mailto:membership@rockvilleartleague.org">membership@rockvilleartleague.org</a>
Rob Gale	<i>Treasurer</i>	<a href="mailto:treasurer@rockvilleartleague.org">treasurer@rockvilleartleague.org</a>
Cathy McDermott	<i>Secretary</i>	<a href="mailto:secretary@rockvilleartleague.org">secretary@rockvilleartleague.org</a>
Susan Dunnell	<i>Newsletter Editor</i>	<a href="mailto:newsletter@rockvilleartleague.org">newsletter@rockvilleartleague.org</a>
Liliane Blom	<i>Liaison Officer</i>	<a href="mailto:liaison@rockvilleartleague.org">liaison@rockvilleartleague.org</a>
Dave Allen	<i>Publicity/marketing</i>	<a href="mailto:publicity@rockvilleartleague.org">publicity@rockvilleartleague.org</a>
Eric Goss	<i>Communications</i>	<a href="mailto:communications@rockvilleartleague.org">communications@rockvilleartleague.org</a>
Lisa Sieg	<i>Hospitality</i>	<a href="mailto:hospitality@rockvilleartleague.org">hospitality@rockvilleartleague.org</a>
Diane Jeang	<i>Monthly Member Shows</i>	<a href="mailto:mshows@rockvilleartleague.org">mshows@rockvilleartleague.org</a>
Patria Baranski	<i>Historian</i>	<a href="mailto:historian@rockvilleartleague.org">historian@rockvilleartleague.org</a>
Michael Auger	<i>Webmaster</i>	<a href="mailto:webmaster@rockvilleartleague.org">webmaster@rockvilleartleague.org</a>
Eileen Mader	<i>Founder</i>	

Rockville Art League  
P.O. Box 4026  
Rockville, MD 20850

