



RockvilleArtLeague.org

Vol. XXVIII No. 7

March 2019

NEXT MEETING: March 7, 6:30PM

Speaker: Maud Taber-Thomas: Portrait Demonstration

Artists and Makers Studio II Building at 12276 Wilkins Avenue, Rockville, MD

Message from the President, Patrick Sieg

Dear Rockville Art League Artists,

One of my favorite art quotes is by Edgar Degas... “Art is not what you see, but what you make others see.”

And spring, it appears, is when we RAL artists are set to make lots of people see! We do that through the many shows and exhibitions in which you participate, including those sponsored by our league.

Spring is a time of new and renew. Warmer temperatures encourage us to get out and about (and hopefully create art). Our spirits are lifted and we are energized by fresh opportunities. Most everyone likes “new.”

While new is something to be envied it comes at a price. New affects the existing and people do not always have the same positive feelings when the words “different” and “change” are used. Change requires openness to the different and, the bigger and more important the change is, the more difficult that change may be to embrace.



“portrait of Fairfield Porter”
by Elaine de Koonig

I am currently reading a book titled *9th Street Women* by Mary Gabriel. It chronicles five women artists who dared to challenge the world of art and they made a dramatic impact on twentieth-century art, specifically “abstract” painting.

They took on the male dominated, European driven art establishment and helped make the USA the center of the art world. And they did this during turbulent social and political times...the Great Depression and World War II.



"City Verticals" by Lee Krasner

Frankly, I don't especially appreciate the abstract expressionism these women helped make famous. Abstract art is different from the art I grew up with and it requires skills that I don't believe I possess, yet. It is new and different for me and a bit frightening. But I certainly appreciate the women described in this book.

Their courage, commitment and the risks they took to be different is inspiring. And the more I learn about them and their genre, the more I can like their work. I'm not yet there and may never be but I can feel a change coming (for me) and it feels great.



"La Ligne de la rupture" by Joan Mitchell

Plus new (to me) and different doesn't necessarily take away from the existing and beloved.

Artists, I believe, are more open to new, even the scary stuff of "different" and "change." I am proud to consider myself an artist and happy to be a member of the Rockville Art League.

We in RAL have seen and worked through much change recently.

- We lost our meeting and exhibit space, the Glenview Mansion, due to needed renovations. So we found alternative space due to the generosity of Cathy Hirsh over at Artists and Makers II. Our meetings there have been very well attended and quite a success. And they were different.
- We were without our exhibit space this winter so we reached out to the Universities of Shady Grove and the Priddy Library Staff has graciously accommodated our upcoming member show.
- The space there is smaller so we needed to make changes to our entry, jury and award process. We went "all in" with our electronic entry process and required an image of your work this time. Our awards will be granted based on our viewers' feedback not a single juror. So far, so good, and thanks to the many that embraced our changed process, supported this show and will participate in what promises to be a beautiful exhibit.
- I recently heard that the City of Rockville has decided not to renew the Glenview Mansion's Gallery Director position. This is a big change and, in my opinion, a disappointing loss. But it may open opportunities for our Rockville Art League to become even more involved with the gallery operations at the mansion. No final changes (other than the director's position) have been communicated but when they are,

we will notice different and changed and hopefully with a “silver lining”.

I am happy that the Board of our Rockville Art League is resilient to change and willing to embrace different. The same can be said for nearly all out RAL member artists.

Some news about The Glenview Mansion: The work is progressing at an enhanced pace. Lisa and I had a chance to see the work in progress and the amount of concrete work needed to renew the back courtyard is dramatic. We were told that the work will be completed by the end of April.

We received a commitment on a schedule for our Spring Members’ Art Show. We are scheduled to open on May 19th (with art drop off on May 13) and continue through June 14th (with pick up on June 17). Ours will be the first show in the gallery after the mansion reopens. We have secured famous local artist Gavin Glakas as our judge. I can’t think of a better juror for our first show after reopening. We can and will embrace aspects of both our traditional show approach and things we have learned during the mansion’s closed time

Our next meeting, March 7 at Artists and Makers II, will host portrait artist, past RAL show judge and lovely person Maud Taber Thomas. She will demonstrate oil portraiture and artist, member Paola Luther has graciously agreed to be her model. You shouldn’t miss this presentation.

One of the most influential textile artists of the 20th century, Anni Albers said it well...“Art is something that makes you breathe with a different kind of happiness.” I like the words “different” and “happiness” in her quote.

Thank you again for your support during these times of change and for keeping art active and alive in Montgomery County.

Sincerely,
Patrick Sieg
President

Rockville Art League 2019 Speaker Series

All events in the 2018 calendar year occur from 6:30-8:00 pm at the Artists and Makers Studio II Building at 12276 Wilkins Avenue, Rockville. Events are open to RAL Members and the General Public.

A reminder: we are meeting at Artists & Makers 2 (12276 Wilkins Ave. Rockville) in the Hirsh Classroom, upstairs on the 2nd floor. Enter through Gallery 209 and take a moment to see what’s on display this month. (Parking is behind the building.)

March 7th: Maud Taber-Thomas Portrait Demonstration





Maud Taber-Thomas is an artist who specializes in oil paintings and charcoal drawings. Trained in classical techniques at the New York Academy of Art, and with a background in English literature from Bowdoin College and Oxford University, where she studied abroad, Maud Taber-Thomas draws inspiration for her evocative portraits, interiors, and landscapes from the narratives and characters of classic literature. Her works, which range in scale from miniature to larger than life, capture the vibrant light and color of far-off places and distant time periods.

Maud Taber-Thomas lives in Takoma Park, Maryland, and teaches at the National Gallery of Art and the Yellow Barn Studio at Glen Echo. Her drawings and paintings have been shown in galleries in the Washington, DC area and in New York City. She has been the recipient of a Terra Foundation residency in Giverny, France, a Summer Research Fellowship to study Pre-Raphaelites painting techniques and Victorian literature at Bowdoin College, and a Portrait Scholarship from the New York Academy of Art.

In 2018, Maud Taber-Thomas contributed thirty pen illustrations for the book *Chance Particulars: A Writer's Field Notebook*, by Sara Mansfield Taber, published by Johns Hopkins University Press. She has received numerous commissions for institutional and family portraits. Her work is represented by Susan Calloway Fine Arts, in Washington, DC. Her work can be viewed at www.MaudTaber-Thomas.com.



April 4th, 2019: **Michael Shibley**
“Watercolor demo and talk”

Save the dates: MAY 19 – JUNE 14

**RAL Juried Members' Spring Show at
Glenview Mansion**

Drop off on Monday, May 13 and pick up of work on Monday, June 17.

Gavin Glakas will judge the show.

Details will be in the next newsletter.



Thank you to everyone who submitted work for the **2019 RAL Members' March Show at the Priddy Library**. You will receive notification by Feb. 25, if your work was accepted into the show.

Please mark your calendars for:
Sunday March 3- 24, 2019 for the **RAL March Members' Show at the Priddy Library**

Come on out, see the show and support your fellow artists!

VOTE for your favorite artwork beginning **Sunday, March 3 – Friday, March 22**, by **5pm**. Awards for this show are *Audience Choice*: 1st, 2nd and 3rd (cash prizes) and *Priddy Choice Award* (cash prize). You must vote in person. Encourage your friends and family to see the show by 5 pm March 22 and VOTE! **CLOSING RECEPTION Sunday, March 24**, 2:00-4:00 pm in Priddy Library Lobby. **AWARDS** at 3:30 pm. Participating artists, please sign your work out with the volunteer, 4:00-5:00 pm.

The Priddy Library (9636 Gudelsky Drive/Rockville 20850) is open 7 days a week: <https://shadygrove.umd.edu/library>
You may park in the 20 minute lot adjacent to the library for visits less than 20 minutes. (Note: parking is *strictly enforced* and if you are

volunteering, coming to the reception or spending time at the show, please park in the parking garage. The one closest to the library is called the Traville Gateway Garage.)

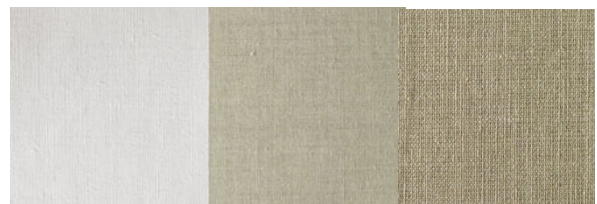
Questions? Please contact Lisa Sieg jshows@rockvilleartleague.org or Patrick Sieg president@rockvillartleague.org

Critique by Penny Kritt

Working on Canvas

While it may not be the very first decision you make about creating art, early in the game you have to decide what materials to use. That includes what the art will be created on. Usually that means that paper or canvas will support the materials that comprise the composition. If you are a crafter or doing collages or experimental art, then there are no rules or limits of what you can use. And for you lovers of watercolor, there are special canvases for you, too. With canvas, you can choose to buy material and stretch it on any size frame or support or buy a prefabricated version.

Below are samples of canvas. Note not only are the colors different, but so are the textures. For portraiture, it is common to use a lighter colored, smoother weave. This is especially true when working with transparent paints. The third sample is a much heavier weight canvas and it has a very rough texture. This would often be the choice of an artist using heavy applications of thick, opaque paints, especially for knife painting.



If you choose raw material and stretch it yourself, you should also prime it to suit your project. Putting multiple layers of gesso or other barrier

products will prevent the paint pigments from staining the fabric. Even the roughest canvas can be made smooth by the application of many coats of gesso or other primers. Just be sure to let each coat dry thoroughly and then sand it smooth.

Have you ever tried colored gesso? Along with providing a barrier to keep pigments from getting into the canvas, it also then doubles as a ground. The purpose of a ground is to bring the canvas to a mid tone value that makes it easier to get the right lighter values. With a colored gesso, you not only can change the value, but you can also add a metallic underpainting. Some of my landscapes have metallic gold gesso. I often use transparent paints in both water and sky shapes, and the gesso that shows through gives just a little sparkle that works like reflections or haze.

While a custom size gives the artist a great deal of freedom, it's also more time consuming and usually more expensive than buying something that is already stretched, primed and ready to go. Another benefit of a canvas that is already stretched on a frame or glued to a cardboard or wooden backing is already a standard size. That means you can buy readymade frames at a fraction of the cost of custom ones. Even if you're not a professional artist, saving hundreds of dollars just on the cost of a single frame is a worth considering.

For the working artist, not having to include the cost of the frame into the price of the work can be rewarded with more sales and the buyer can select the frame style he prefers. Modern sensibilities no longer require oil or acrylic paintings to be framed, although frames better suit traditional subjects. If the hung canvas sticks out from wall the less than at least 1½ inches, a frame is usually required. That can be overcome by selection a thicker stretcher that will make the hung canvas stick out up to three inches from the wall. If you buy a "gallery canvas", it is usually on a thicker stretcher and the canvas is neatly wrapped to the back of the stretcher. Just paint the edges and you're done!

I use gallery canvas for the option that I call an optical *delusion*, also known as *trompe l'oeil*.



Safe Harbor by Penny Kritt/Acrylic on canvas

This award-winning painting looks like a traditional composition in an ornate gilt frame. That's an illusion. There is no frame, just acrylic paint – including a metallic gold – that looks both antique and three dimensional. It's the ultimate compliment when I tell viewers that there is no frame, but they insist there is!



As you can see in the enlargement above, it looks like the frame is beveled so the outer edge of the frame sticks out further from the wall than the part that is closest to the painting. You can also "see" the decorative carvings.

One advantage of this "frame" is that my biggest expense was some masking tape so I could keep the orders straight and level.

If you'd like a gentle critique of your work, email me a photo at pennykritt@aol.com.

**For classes or private lessons, contact Penny at
301/989-1799**

2019 Rockville Student Juried Art Show

The City of Rockville and Parks Arts Division and the Rockville Art League will sponsor the 2019 Rockville Student Juried Art Show March 31 – April 26 at the *Rockville Senior Center* (1150 Carnation Drive, Rockville). This show is open for students in grades 6-12 who live or attend school within the City of Rockville corporate limits. It's a wonderful event for the student artists in our community to display their work.

The Rockville Art League provides hands on support for this annual show.

We will need your help. Please consider volunteering to help with the following:

- **Saturday, March 23:** 11:00 am – 1:00 pm for registration and drop-off and 1:30-3:00 pm for hanging the show
- **Sunday, March 31,** 1:30- 3:30 for the Opening Reception
- **Monday, April 29,** 5:00 – 6:30 pm for art pick up/sign out
- **Tuesday, April 30,** 3:30 - 5:00 pm for art pick up/sign out

Note: the location for this show is the Rockville Senior Center.

Sign up on: “Sign-up Genius”

<https://www.signupgenius.com/go/4090C49A5AC23ABFD0-2019>

Or contact Lisa Sieg

jshows@rockvilleartleague.org or Patrick Sieg

president@rockvilleartleague.org if you have questions or need help signing up.

MEMBER NEWS



Musicalia
Arts Barn
February 8 - March 31, 2019
Artists' Reception Saturday, February 16, 1-3 PM

Michael Auger
Goodloe Byron
Domenic Cicala
Peter Foiles
Shanelle Jacobs
Michael Kuchinsky
Bill Mapes
Grace Newcomer

Alfredo Ortiz
Roxana Rojas-Luzon
Meghan Schaap
Linda Slattery Sherman
Francine Stowe-Sinkler
Carol Sontheimer
David Terrar
Katherine Thomas
Alexey Zoob

Featuring art by Magruder Murray

Arts Barn
311 Kent Square Rd
Gaithersburg, MD
301-258-6394

Gaithersburg
GaithersburgMD.gov

Art History Series Lecture by Dr. Andrew H. Weaver: Of Color, Space, and Texture
How We Use Visual Language to Talk about Music, February 16, 1-2 PM

The “MUSICALIA” exhibit at Arts Barn pays homage to musicians.

The exhibit represents a broad range of music genres and artists - including RAL member Michael Auger - and will be on display February 4 to March 31, with viewing hours Monday through Friday, 10 a.m. to 5 p.m. and Saturday, 1:30 to 5 p.m.

The public is invited to meet the artists during a free Artists Reception on Saturday, February 16 from 1 to 3 p.m.

Gaithersburg Arts Barn
311 Kent Square Rd
Gaithersburg, MD 20878



Abstract Realities

February — April, 2019
A solo art show by
Gloria Miotto

Gloria Miotto

ABSTRACT REALITIES

www.gloriamiottoart.com
gloriamiottoart@gmail.com
(202) 445-1159

OPENING RECEPTION

Tuesday, February 19, from 5:00 — 7:00 pm.

Gallery hours: People can visit the gallery

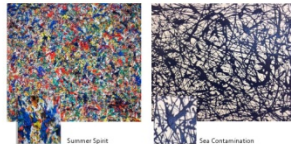
Monday-Friday 11:00 am — 3:00 pm 4:00 — 9:00 pm

Saturday 11:00 am — 6:00 pm

Sunday Closed

Phone: (202) 393-4232

GCDC GRILLED CHEESE BAR
1730 PENNSYLVANIA AVENUE, NW
WASHINGTON, D.C.



Paula Zeller's work has been accepted in Glave Kocen's Hung Juried Exhibit. Come see it in person March 1 at the opening from 6-8 p.m., or during the month of March at 1620 West Main St., Richmond, VA.

Professional Fine Art Restoration and Repair

Have your Fine Art Oil or Acrylic Paintings and Antique Frames Restored or Repaired with Museum Quality Work. Over 30 years in Fine Art Restoration Experience
Studio located in Rockville, Maryland.

For a Consultation at No Cost or Obligation to you, Contact:

Abraham Garcia

301-770-5015

abrahamdesigns@hotmail.com

www.AbrahamArtImpressions.com

The Compass Atelier
Art classes for beginners and experienced artists
Special workshops Study Abroad
Home of the revolutionary Master Artist Program

TheCompassAtelier.com TheCompassAtelier@gmail.com

Kritt Studio Classes

Color for Artists

Monday, February 25

(Morning only – Evening classes filled)

Painting Spring

Monday, April 1

(Morning and Evening classes)

Draw Everything

Tuesday, April 2

(Morning and Evening classes)

Draw a Still Life

Monday, May 6

(Morning and Evening classes)

Painting Pets

Tuesday, May 7

(Morning and Evening classes)

Advanced Groups and Private Lessons

For more info: call Penny at 301/989-1799

A Work of Art by Debra Halprin
Giclée Printing and Photography Service
Create Fine Art Reproductions of your Paintings, Drawings and Photos on Watercolor Paper or Canvas

.12 cents per sq. inch on Paper
.15 cents per sq. inch on Canvas

Photography Starting at \$35 - Includes Digital Files, Proofs and Color Enhancements

Mastering the Fine Art of Giclée Printing
HalprinArt.com
Halprinart@aol.com
301-910-4750
Located in Rockville Maryland

OPPORTUNITIES

Baltimore Watercolor Society's Mid-Atlantic Exhibition

Call for entries: The Baltimore Watercolor Society's Mid-Atlantic Exhibition at the BlackRock Center for the Arts, Germantown, MD, June 8 – July 13, 2019. Open to all watermedia artists in the Mid-Atlantic states and DC.

Juror: David Lobenberg. Entry online or by CD. First place \$1200. Deadline March 30, 2019. For a prospectus and more information: www.BaltimoreWatercolorSociety.org

44th Annual Community Art Show and Sale at the Woman's Club of Chevy Chase

The Woman's Club of Chevy Chase's 44th Annual Community Art Show and Sale will be held from Fri., April 5 to Sun., April 7. The Call for Entries can be downloaded from the club website at wccmaryland.org.

Please take note:

1. We once again have nine categories for the art; see the Call for Entries for more information. Note that the maximum size is 34 x 36 inches.

2. As we did last year, we have **established a cut-off of 475 works of art** and will close registration when we have received entries for 475 works of art, even if that occurs before the deadline of March 11. Register early to avoid the cut-off.

3. If we receive your entry by the deadline of March 11, please assume that you are in the show. In the event that we close registrations early because we have reached our limit of 475, we will notify any artists who did not meet the

cut-off. **However, to be notified you must include an email address or a self-addressed stamped envelope.** We take no responsibility for notifying artists who do not provide one of these two ways of notifying them.

4. Artists must pick up their artwork no later than 7 PM Sunday. There will be a **\$10/day late pickup fee** for any art work remaining after 7 PM Sun., April 7.

5. If you submit photography, please note on the form if it is digitally enhanced.

6. This is a community art show and is open to artists who live within a 50-mile radius of the Club.

Reminder of Entry Conditions:

*****Please note that we have capped the entries at 475 and will close registration when we reach that number, even if it is before March 11. Register as early as you can!***

Please respect the size restrictions stated on the Call for Entries.



GLENVIEW MANSION CONFERENCE ROOM SHOWS

You can show your artwork in Glenview Mansion for one month if you have received a 1st, 2nd, 3rd or honorable mention award in an RAL juried show. Artists may have both rooms to exhibit in if a second artist doesn't sign up for the same month within two months of the show's start date. The receptions at Glenview mansion are 1:30-3:30 PM on the Sunday after hanging. Preferred drop off and pick up times for Glenview Shows are from 9 am to 12 noon. Drop off/pickups are Mondays (unless a holiday). If you are unavailable on the date for pickup, please arrange for someone to pick up for you. There is no room to store your artwork at the Mansion. If you are unable to drop off/pick up on the assigned dates and you can't find someone else to drop off/pick up for you, please choose a month in which you can make those dates.

For artwork delivery, please unwrap your work and take the wrappings with you. Please bring pliers (needle nose are easy to work with). You may use the hand truck that is at the Mansion to move your artwork from your vehicle. There is no staff at the mansion available to help you move your artwork into the conference rooms. You are responsible for hanging your own artwork, with help from the Mansion staff. If you don't have labels for your work, please fill out the RAL cards that will be available. If you print your own, print them on card stock. Do not use the sticky Avery labels, unless you adhere them to foam core or card stock. **Contact Diane Jeang, Glenview Member Show Coordinator, (301) 871-1589 or chickendoc44@gmail.com with questions.**

Monday delivery and hanging: 12PM–2PM & 5-7PM/ Sunday Gallery Opening: 1:30—3:30PM

Monday Pick up: before 11AM

Glenview Mansion Schedule				
2019				
	Member(s)	Mon &/or Tues Deliver 12-2&5-7	Sunday Gallery Opening 1:30-3:30	Monday Pick-up Before 11 am
FEB/MAR	Closed			
MAR/APR	Closed			
MAY/JUNE	RAL Spring Show			
JUNE/JULY	Lisa Sieg/Mike Kuchinsky			
AUG/SEPT	Board Members' Show/Joanie Grosfield			
SEPT/OCT	Nighat Ahmed			
OCT/NOV	Cathy McDermott/ Susan Dunnell			
DEC	RAL Winter Show			
2020				
JAN/FEB	Diane Jeang			
FEB/MAR	Student Art Show			
MAR/APR	Teresa Hull			
MAY/JUNE	RAL Spring Show			
JUNE/JULY				
AUG/SEPT	Board Members' Show			
SEPT/OCT				
OCT/NOV	Stephanie			

Rockville Art League Newsletter March 2019

	Gustavson/ Sue Moses			
DEC	RAL Winter Show			

For additional information for members hanging in the conference rooms, please refer to the RAL web page: <http://www.rockvilleartleague.org/glenview.pdf>

At least one platter of finger foods (cookies, crackers/cheese, veggies/dip) should be supplied by the RAL artist on the day of the opening reception. Cups/napkins/water are provided by the City of Rockville for opening receptions. The Mansion will be open at 1 pm for the artist on the day of the opening reception.

RAL Ongoing Show List

Twinbrook Library – 202 Meadow Hall Drive, Rockville, Maryland

Shows for the library run from 1st of the month to the end of the month for 1 month shows. 5 medium to large paintings, Contact person: Christine Lundy, 240-777-0252.

Christine.lundy@montgomerycountymd.gov

	<u>From</u>	<u>To</u>
Open	Feb. 1, 2019	Mar. 1, 2019
Open	Mar. 1, 2019	Apr. 1, 2019
Open	Apr. 1, 2019	May 1, 2019
Open	May 1, 2019	June 1, 2019
Open	June 1, 2019	Jul. 1, 2019

Thomas Farm Community Center – 700 Falls Grove Drive, Rockville, Maryland

12-16 medium to large paintings, contact person: Melinda Norton (240) 314-8842.

email: mnorton@rockvillemd.gov

<u>Name</u>	<u>From</u>	<u>To</u>
Leita Gerson	Dec. 15, 2018	Mar. 15, 2019
Open	Apr. 15, 2019	July 15, 2019
Open	July 15, 2019	Oct. 15, 2019

Marilyn J. Praisner Library – 14910 Old Columbia Road, Burtonsville, Maryland

10 small to medium or 5-6 large paintings (10 hanging chains), Contact person: (240) 773-9455, Vera Ramaty

<u>Name</u>	<u>From</u>	<u>To</u>
Open	Feb. 15, 2019	Apr. 15, 2019
Open	Apr. 15, 2019	June 15, 2019
Open	June 15, 2019	Aug. 15, 2019
Open	Aug. 15, 2019	Oct. 15, 2019

RAL BOARD OF DIRECTORS

Name	Position	E-mail
Patrick Sieg	<i>President</i>	president@rockvilleartleague.org
Lisa Sieg	<i>1st Vice President</i>	jshows@rockvilleartleague.org
Carlos Garcia	<i>2nd Vice President</i>	oshows@rockvilleartleague.org
Nighat Ahmed	<i>Program Coordinator</i>	programs@rockvilleartleague.org
Lisa Sieg	<i>Volunteer Coordinator</i>	volunteer@rockvilleartleague.org
Paula Zeller	<i>Membership</i>	membership@rockvilleartleague.org
Rob Gale	<i>Treasurer</i>	treasurer@rockvilleartleague.org
Cathy McDermott	<i>Secretary</i>	secretary@rockvilleartleague.org
Susan Dunnell	<i>Newsletter Editor</i>	newsletter@rockvilleartleague.org
Liliane Blom	<i>Liaison Officer</i>	liaison@rockvilleartleague.org
Dave Allen	<i>Publicity/marketing</i>	publicity@rockvilleartleague.org
Eric Goss	<i>Communications</i>	communications@rockvilleartleague.org
Lisa Sieg	<i>Hospitality</i>	hospitality@rockvilleartleague.org
Diane Jeang	<i>Monthly Member Shows</i>	mshows@rockvilleartleague.org
Patria Baranski	<i>Historian</i>	historian@rockvilleartleague.org
Michael Auger	<i>Webmaster</i>	webmaster@rockvilleartleague.org
Eileen Mader	<i>Founder</i>	

Rockville Art League
P.O. Box 4026
Rockville, MD 20850

