



RockvilleArtLeague.org

Vol. XXVIII No. 6

February 2019

NEXT MEETING: March 7, 6:30PM

Speaker: Maud Taber Thomas: Portrait Demonstration

Artists and Makers Studio II Building at 12276 Wilkins Avenue, Rockville, MD

Message from the President, Patrick Sieg

Dear Rockville Art League members,

Happy New Year 2019.

2018 was an outstanding year for our group and I am much looking forward to what is in store for us in 2019.

I don't as a rule make new year's resolutions as I prefer to make plans and correct my course as I move forward throughout the year.

Of course, like many of us, I want to get more exercise, to eat a healthier diet and to be the best husband, father and friend that I can be. These "resolutions" should not be new each January. And I am very lucky to have help on these from my lovely wife and partner Lisa.

There are a few things at the start of 2019 that I hope for related to our league...

1. Welcome new artists into our group and value all our existing members.
2. Look for opportunities to show our work to audiences, new and existing.

3. Work with the City of Rockville and collaborate on supporting art in our community.
 - o Support the new mansion gallery director when a candidate is selected.

And without ways to measure the above these will be wishes versus resolutions.

So let me attempt to be more specific and to put some teeth into the above...

1. Grow our league membership by 20%
2. Opportunities to reach more audiences:
 - a. A successful members' show at the Priddy Library at the Universities of Shady Grove in March
 - b. A show at Artists and Makers Studios 2 in September
 - c. A show at Brookside Gardens in October
 - d. Meeting and exhibiting work once again at Glenview Mansion with juried members' shows in May/June and again in December
3. Support the city:
 - a. Meet with the Rockville City representative and the Arts Commission on a quarterly basis,

- b. Participate in the selection of the new gallery director (interview candidates and provide recommendations),
- c. Meet with the Gallery Director within 30 days of their selection and determine specific actions that the league can take in support. Publish those actions in the newsletter.

I sincerely welcome your feedback on the above and please reach out to me or any of the RAL board members with your thoughts.

Lisa is working hard on our upcoming members' March show at the Priddy Library. This exhibition will be different than our mansion gallery based shows and it will certainly reach new and different audiences. It is going to be fun and we are trying new things including a new entry process (with images), a selection panel versus a juror and having audience selected awards. If these new elements work well then we can see about augmenting our larger Glenview Mansion shows with some of these new ideas.

Please see notes on this show and a "call for entry" later in this newsletter.



A final resolution for 2019 for is to find art related quotes for our newsletter. To start the year right, below are three by the famous Pablo Picasso:

1. Art washes from the soul the dust of everyday life.
2. Every child is an artist. The problem is how to remain an artist once he grows.
3. The artist is a receptacle for emotions that come from all over the place: from the sky, from the earth, from a scrap of paper, from a passing shape, from a spider's web.



I look forward to seeing your entries to the Priddy Library show and seeing you in person at our next meeting on Thursday, March 7.

Sincerely,
Patrick Sieg

President



RAL Members' March Show

**PRIDDY LIBRARY AT THE
UNIVERSITIES AT SHADY GROVE**
9636 Gudelsky Drive, Rockville 20850

March 3 - 24, 2019

Call for entries: February 1 – February 17.
Online submissions only.

We are excited that the Priddy Library at the Universities at Shady Grove will be hosting the Rockville Art League for our RAL Members' March Show.

Call Deadline: You will be asked to submit work **online only**. Members in good standing may submit work beginning **Friday, Feb. 1 – Sunday, Feb. 17**. No submissions will be accepted after Feb. 17. If your work is accepted (or not), you will be informed by Feb. 25. Please read all the information below carefully before submitting.

Entry Fee: A \$10 show fee will be collected when accepted artwork is dropped off.

Eligibility and rules: The following rules apply for all works entered. Each member **in good standing** may enter one piece. You will be required to submit an image of your piece on this form. Due to space limitations the maximum width of any framed side is **30 inches**. Only **original** works **framed securely**

with hanging wire are acceptable. (No sawtooth hangers or such.) If submitting unframed canvas, edges should be painted or finished. No wet canvases are allowed. The entries may not have been exhibited previously in a RAL Member Show. All artists are encouraged to sign their work on either the front or back. Entries not meeting the show conditions will not be accepted. RAL retains the right to determine suitability of work for entry in this show. Artists will be required to sign in their work at registration and also sign it out at the final pick up. All work must remain up until the end of the show.

Sales: Requests for purchase by interested buyers will be forwarded to the artists by the Rockville Art League president or juried show coordinator. There are no sales commissions for this show.

Original Artwork Includes:

- Oils and acrylics
- Watercolors
- Pastels, drawings, and hand pulled prints
- Mixed media, collage, experimental, and original computer-generated art
- Photographs
- Sculpture and ceramics

Awards:

- Audience Choice Award for 1st, 2nd and 3rd (cash prizes)
- Priddy Library Award (cash prize)
- Please encourage your friends, family, neighbors, colleagues, and fellow artists to visit the Priddy Library beginning March 3 to view your work and they may vote for their favorite until 5:00 pm on Friday, March 22. You must vote in person at the Priddy Library, open 7 days a week. See website for hours: <https://shadygrove.umd.edu/library>
- Awards will be announced at the closing reception on Sunday, March 24 at 3:30 pm.

Delivery: Saturday, March 2, 10:00 am – 12 noon. The Priddy Library is located at 9636 Gudelsky Drive, Rockville, MD 20850. You or your designee must sign in your work at registration and a \$10 show fee will be collected.

For drop off: you may briefly park in the free 20-minute parking area close to the Priddy Library. Please note it is for 20 min. only and this is strictly enforced.

If you are volunteering or plan to come for the reception, please park in the parking garage.

Reception: Sunday, March 24, 2- 4:00 pm. Light refreshments. Presentation of awards at 3:30 pm. This will be a closing reception. You (or your designee) may take your work with you beginning at 4:00 after signing out with the volunteer but all work must be removed/signed out by 5:00 pm.

Final Pick Up: after the closing reception on Sunday, March 24, 4:00-5:00 pm. Please sign your work out with the volunteer. You or your designee must pick up your work on this date. Please have your designee pick up your work, if necessary. There is no storage available.

We will need a few volunteers to help register work on Saturday, March 2, 9:45 am -12 noon and on Sunday, March 24 from 3:30-5:00 pm. Please contact Lisa Sieg, if you are interested.

Online form: submissions are *online only*. Use this form to submit your work:
<https://form.jotform.com/90025081729151>
Submissions will be accepted from Friday, Feb. 1 – Sunday, Feb. 17.

Questions regarding the show? Please contact:
Lisa Sieg: jshows@rockvilleartleague.org
Patrick Sieg: president@rockvilleartleague.org

Rockville Art League 2018-19 Speaker Series

All events in the 2018 calendar year occur from 6:30-8:00 pm at the Artists and Makers Studio II Building at 12276 Wilkins Avenue, Rockville. Events are open to RAL Members and the General Public.

A reminder: we are meeting at Artists & Makers 2 (12276 Wilkins Ave. Rockville) in the Hirsh Classroom, upstairs on the 2nd floor. Enter through Gallery 209 and take a moment to see what's on display this month. (Parking is behind the building.)

March 7th, 2019: **Maud Taber Thomas**
“Portrait demonstration”

April 4th, 2019: **Michael Shibley**
“Watercolor demo and talk”

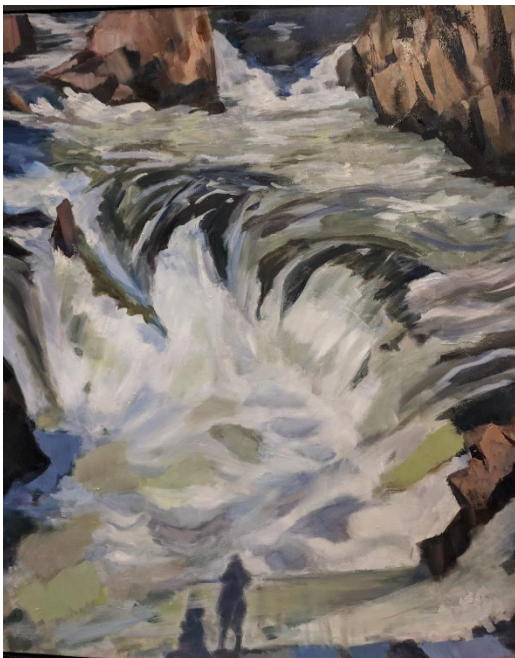
Critique by Penny Kritt Critique for Sabiha Iqbal

Sabiha Iqbal has requested a critique of a painting that comes sooooo close to what she wants, but it just isn't quite there yet. She started with a wonderful photo that she took at Great Falls in Virginia. She wanted an image of the majestic power of the water, but she accidentally got a lot more. On the bottom of the photo, you see shadows of the bridge where she was standing and the silhouettes of herself and her husband who was sitting beside her. The fleeting moment of these shadows was a perfect counterpoint to the enduring rush of water.



Her goal was to capture the feeling of the moment. She felt that a more abstract representation of the scene would do a better job than having the viewer get bogged down in the details of a more realistic approach.

Here's how far she got:



A "Wow" Moment by Sabiha Iqbal
Oil on Canvas

Sabiha really got the essence of both water and rocks without adding fussy details. Her water has lots of soft edges between color shapes and

the directions of her brush strokes show where the water is flat and where it changes to a vertical direction. The oversimplified explanation is that flat moving water has mostly horizontal brush strokes with soft edges. Where the water actually falls, vertical or slightly diagonal brush strokes explain that to the viewer. With both the vertical and horizontal water, she varied both the width and length of her brush strokes to prevent having a pattern arise that would obscure the random flow of water.

For the rocks, she used a palette knife, a brilliant idea because it gave her both the hard edges that rocks have and a thicker application of paint. The viewer can *see* the transparency and movement of the water as well as the solid and hard material of the rocks.

In spite of those effective elements, Sabiha felt two elements were missing, and their absence changed the feel of the composition. The first was her painting didn't show as much of the sunny day as she wanted. The second was that the shadows of the bridge and figures seemed to be backlit figures instead of cast shadows.

Let's look at what might be changed.



Inset Detail 1

A portion of the photograph is superimposed on the painting. Sabiha's shadows are much darker in value and they are not as broken up by bits of white foam. That makes those shapes more perilous. Using a slightly lighter value and going over it with a broken color of both white and light gray would make the scene happier.



Inset 2

This is another case where slightly changing the values would achieve her goal. The shadow under her rock is too dark, and the water doesn't have enough broken up value changes to give the look of sunlight.



Inset 3

Comparing the shadows in the photo to what was painted shows both the water and other elements are too dark. Another subtle but critical difference is that, although she used soft edges on the figure shadows, the edges must be

even softer as seen in the photo. That's part of why the figures in the painting look like people standing up (vertical) versus shadows cast on a horizontal surface.



Inset 3 (black and white)

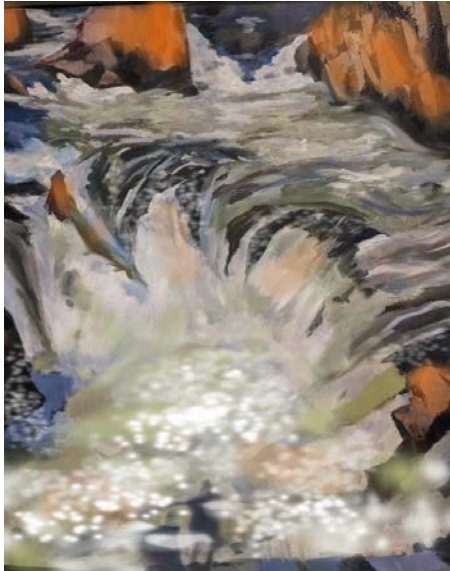
This grayscale version makes it easier to identify the value of shapes, their textures and edges. Thus, in addition to the painted shadows being too dark, their edges are also too hard. It also adds to the sense of an overcast day instead of a sunny one.

Now let's look at some techniques that might get Sabiha closer to her goal. First, many of the large rocks have a glaze of a burnt orange to give a sense of sunlight. Many painters use a yellow or golden color, but for me, yellows just seem too cold, a surprise for such a warm color. More light speckles were added over some of the darkest rocks to lighten their overall value, again adding a sense of sunlight.

The large rock on the left at the top has a hard edge below where it meets the water, and that can make it look like it's floating on the water. The large one on the right has a soft, blended edge, and that makes it sink *into* the water.

Moving down, in the photo, the waterfall is short and most of the visible water is more horizontal. That changes the whole landscape and it helps to flatten out the entire lower portion of the water. That's easily done by

using horizontal brush strokes with very soft edges.



A Wow Moment (with suggested modifications)

With the water now flattened, the shadows of the people in the bottom middle also look like they're cast on the ground rather than being upright on a vertical surface. By breaking up the shadow forms with short white brush strokes with soft edges, that helps explain the shadow on water rather than a hard upright surface. The one larger light gray shape that crosses both figures has a harder edge than it should. That's why it's confusing to the viewer. Elsewhere on the shadow shapes, the softer edges let us see how the shadow distorts on the moving water with its various light values.

As always, a critique is based on what is perceived to be the artist's intention. But no matter the stature of the person doing the critique, the artist always has the last say. *Never let anyone persuade you to depart from your vision of the painting!*

If you'd like a gentle critique of your work, email me a photo at pennykritt@aol.com.

For classes or private lessons, contact Penny at 301/989-1799

MEMBER NEWS

You are invited to a Wine & Cheese Reception for

Point of View

Paintings by Sally Davies

Sunday, January 6, 2-4 pm
Heritage Center Gallery
at the Pyramid Atlantic Arts Center
4318 Gallatin Street
Hyattsville, Maryland 20781

Exhibit on view from December 12 - February 28

The Pyramid Atlantic Building is across the street from Franklin's Restaurant in Hyattsville. Park at restaurant parking lot & cross the street to Gallatin. The entrance is on the right side of Gallatin Street.

www.anacostiatrails.org/heritage-center-art-exhibit-2

Professional Fine Art Restoration and Repair

Have your Fine Art Oil or Acrylic Paintings and Antique Frames Restored or Repaired with Museum Quality Work. Over 30 years in Fine Art Restoration Experience
Studio located in Rockville, Maryland.

For a Consultation at No Cost or Obligation to you, Contact:

Abraham Garcia

301-770-5015

abrahamdesigns@hotmail.com

www.AbrahamArtImpressions.com

Kritt Studio Classes

Color for Artists

Monday, February 25

(Morning and Evening classes)

There is currently a misprint about the start date. Contact me about changes.

Drawing Landscapes

Tuesday, February 26

(Morning and Evening classes)

Advanced Groups and Private Lessons

For more info: call Penny at 301/989-1799



A Work of Art by Debra Halprin
Giclée Printing and Photography Service
 Create Fine Art Reproductions of your Paintings,
 Drawings and Photos on Watercolor Paper or Canvas

.12 cents per sq. inch on Paper
 .15 cents per sq. inch on Canvas

Photography Starting at \$35 - Includes Digital Files,
 Proofs and Color Enhancements

Mastering the Fine Art of Giclée Printing
 HalprinArt.com
 Halprinart@aol.com
 301-910-4750
 Located in Rockville Maryland

OPPORTUNITIES

<https://laurelartguild.org/lagopen.html>



March 9, 2019 to March 31, 2019

Laurel Art Guild

50th Annual Open Juried Exhibition

Call for Entries

Montpelier Arts Center

Gavin Glakas
 Juror

Schedule

February 2: 10:00am Postmark Deadline for CD
 February 28: Juror's availability on website
 March 6: Deliver Art Works 12:00pm - 6:00pm
 March 8: Curator's opening
 March 10: Reception & Awards Ceremony 2:00pm
 March 11: Exhibit closure
 April 1: 10:00am artwork 12:00pm - 6:00pm

Awards

50 cash prizes will be awarded:
 1st Place - \$250
 2nd Place - \$200
 3rd Place - \$150
 Three Most Awarded - \$50 each

Baltimore Watercolor Society's Mid-Atlantic Exhibition

Call for entries: The Baltimore Watercolor Society's Mid-Atlantic Exhibition at the BlackRock Center for the Arts, Germantown, MD, June 8 – July 13, 2019. Open to all watermedia artists in the Mid-Atlantic states and DC.

Juror: David Lobenberg. Entry online or by CD. First place \$1200. Deadline March 30, 2019. For a prospectus and more information: www.BaltimoreWatercolorSociety.org

44th Annual Community Art Show and Sale at the Woman's Club of Chevy Chase

The Woman's Club of Chevy Chase's 44th Annual Community Art Show and Sale will be held from Fri., April 5 to Sun., April 7. The Call for Entries can be downloaded from the club website at wccmaryland.org.

Please take note:

1. We once again have nine categories for the art; see the Call for Entries for more information. Note that the maximum size is 34 x 36 inches.

2. As we did last year, we have **established a cut-off of 475 works of art** and will close registration when we have received entries for 475 works of art, even if that occurs before the deadline of March 11. Register early to avoid the cut-off.

3. If we receive your entry by the deadline of March 11, please assume that you are in the show. In the event that we close registrations early because we have reached our limit of 475, we will notify any artists who did not meet the cut-off. **However, to be notified you must include an email address or a self-**

ELIGIBILITY	ENTRY REQUIREMENTS	ENTRY FORM
<p>Any artist 18 years or older who resides in Maryland, Virginia, District of Columbia, Pennsylvania, West Virginia, Delaware, or New Jersey, or is a previous LAG Juror, may submit two entries. However, only the original work will be exhibited if accepted by the judge.</p> <p>Works exhibited must be an original composition created by the artist. Two-dimensional work must be suitably framed and newly matted and must not exceed framed dimensions of 36" by 48". Three-dimensional work that meets the specific hanging requirements will be considered. State-Commissioned 3-dimensional works will not be accepted for this exhibition. Submitted artwork must have been created within the past three years and not previously shown at Montpelier Arts Center.</p> <p>All work must be suitably framed (unless designed to be displayed unframed), i.e. the artwork contains beyond the artist's signed and recently matted (or hanging). Exposed glass edges or unstable frames will not be accepted. Matted works must be matted on white or off-white only. Glass must be clean. Well-mounted corners that are fragile or contain breakable materials must be in a shadow box frame and must weigh less than 40 lbs., including frame.</p> <p>All work must be titled and priced. If not for sale, the value of the work must be stated on the entry form. A form for labeling the back of accepted works will be available on location on the day of the show.</p> <p>Art must remain on view until the official close of the exhibit.</p> <p>Laurel Art Guild reserves the right to refuse any artwork which delivery date is deemed to be impractical. Artists' deliveries should not exceed size requirements, or not meet the same as determined by the judge submitting for judging.</p>	<p>Screening will be done by juror.</p> <p>Digital images must be at least 300-dpi in jpg format and no larger than 30" x 48" (jpg) or "eps" (eps) format.</p> <p>Logos and entry forms can be submitted online at http://www.laurelartguild.org/submitform or by CD. If submitted online, you will receive an email confirming receipt within 7 days.</p> <p>For mail-in entries, please email CD with your name. All entries must be captioned or postmarked no later than February 2, 2019. Send CD and entry form to: Laurel Art Guild, c/o Melissa Price 7933 Montpelier Drive Silver Dale, MD 20786</p> <p>Please check: www.laurelartguild.org/19-annual-show accepted after February 19 to see if your work was accepted. Notifications will only be made via the LAG website.</p> <p>For further information see laurelartguild.org or email Melissa Price, Exhibit Coordinator at melissaprice@gmail.com. Prospectus is available online at laurelartguild.org.</p> <p>DELIVERY & PICK UP</p> <p>Accepted work must be hand delivered to the second floor of the Montpelier Arts Center on Tuesday, March 5, 2019 between 12:00pm and 6:00pm. Please use the exhibit entry at the left of the main entrance.</p> <p>Exhibited art must be picked up on Monday, April 1, 2019 between 12:00pm and 6:00pm. Failure to pick up art at these times will result in a storage charge of \$5 per day.</p> <p>LIABILITY</p> <p>Participants will be held responsible for handling artwork. Insurance coverage is limited to \$500 per work from delivery date to pick up date only. Laurel Art Guild will not be responsible for loss or damage to any artwork. Submission of an entry constitutes agreement with the conditions set forth above and allows that the work in original and does not constitute any copyright.</p>	<p>Name: _____</p> <p>Address: _____</p> <p>Phone #: _____</p> <p>Email: _____</p> <p>Agreement: I agree to all conditions in the prospectus: _____</p> <p>Signature: _____</p> <p>Title A: _____</p> <p>Medium: _____</p> <p>Frame Dimensions (WxH): _____</p> <p>Price: _____</p> <p>Title B: _____</p> <p>Medium: _____</p> <p>Frame Dimensions (WxH): _____</p> <p>Price: _____</p> <p>Please upload or send CD by February 2, 2019. Notifications will be available on or around February 19 via the website www.laurelartguild.org. If you have accepted work during the 19th Annual show accepted work during the show you agree to let the Laurel Art Guild use your name and an image of your artwork (in appropriate proportion to the website) in its future on-line electronic show catalog.</p> <p>Background artwork courtesy of David Shippy</p>

addressed stamped envelope. We take no responsibility for notifying artists who do not provide one of these two ways of notifying them.

4. Artists must pick up their artwork no later than 7 PM Sunday. There will be a **\$10/day late pickup fee** for any art work remaining after 7 PM Sun., April 7.

5. If you submit photography, please note on the form if it is digitally enhanced.

6. This is a community art show and is open to artists who live within a 50-mile radius of the Club.

Reminder of Entry Conditions:

****Please note that we have capped the entries at 475 and will close registration when we reach that number, even if it is before March 11. Register as early as you can!**

Please respect the size restrictions stated on the Call for Entries.



**Hill Center Galleries
TREEmendous
CALL FOR ENTRIES**

The exhibition focuses on the beauty of all trees. This show will be held during the annual Cherry Blossom season celebration.

Exhibition Dates: March 7-April 28, 2019
Opening Reception with Juror:
Wednesday, March 13, 2019, 6:30-8:30 pm

Call Deadline: Fri., Feb. 1, 2019

ELIGIBILITY: Artists from DC, Virginia and Maryland are invited to submit pieces of wall-hung art with a short description that identifies the tree that has inspired their work and/or any personal connection to it. Original work created in any medium will be considered. Artists are asked not to submit work that has been exhibited previously at Hill Center.

ENTRY FEE: \$40 for up to 5 pieces, \$10 for each additional piece. Payment through PayPal (which accepts all major credit cards).

GUIDELINES: Artwork must be delivered ready to hang using Hill Center's cable-and-hook system. Details will be provided to selected artists. All artists are encouraged to sign their work. Printmakers are encouraged to indicate if prints are numbered. No size restrictions apply, as 14' ceilings in some gallery spaces accommodate large pieces. All artwork must be available for sale.

PRIZES: Three cash prizes will be given: 1st Place \$500, 2nd Place \$350, 3rd Place \$250.

ENTRIES: Entries must be made online at: <http://hillcenterdc.org/home/call-for-entries> (under Galleries and Exhibitions). Instructions are posted on the website.

JUDGING: The Exhibition will be juried by Carole Ottesen, writer, photographer and illustrator specializing in garden subjects. All artists will be notified of her decisions on/about February 7.

DELIVERY/PICKUP: Artwork selected for the exhibition must be delivered to Hill Center on Sunday, March 3, 2019, between 12-3 pm. Work is to be removed on Monday, April 29, 2019 from 8-11 am.

SALES: Artists selected for the exhibition will be required to sign the Hill Center Galleries Consignment Agreement. Hill Center Galleries shall sell artwork at the sales price submitted in the online entry, plus applicable DC sales tax, and remit proceeds to the artist, **retaining a 30% sales commission**. No price changes will be allowed after the call deadline.

SPONSORED BY: The Capitol Hill Art League and Hill Center

QUESTIONS? Email:

galleries@hillcenterdc.org

Hill Center Galleries | 921 Pennsylvania Avenue SE, Washington, DC 20003 | (202) 549-4172 | hillcenterdc.org/galleries



GLENVIEW MANSION CONFERENCE ROOM SHOWS

You can show your artwork in Glenview Mansion for one month if you have received a 1st, 2nd, 3rd or honorable mention award in an RAL juried show. Artists may have both rooms to exhibit in if a second artist doesn't sign up for the same month within two months of the show's start date. The receptions at Glenview mansion are 1:30-3:30 PM on the Sunday after hanging. Preferred drop off and pick up times for Glenview Shows are from 9 am to 12 noon. Drop off/pickups are Mondays (unless a holiday). If you are unavailable on the date for pickup, please arrange for someone to pick up for you. There is no room to store your artwork at the Mansion. If you are unable to drop off/pick up on the assigned dates and you can't find someone else to drop off/pick up for you, please choose a month in which you can make those dates.

For artwork delivery, please unwrap your work and take the wrappings with you. Please bring pliers (needle nose are easy to work with). You may use the hand truck that is at the Mansion to move your artwork from your vehicle. There is no staff at the mansion available to help you move your artwork into the conference rooms. You are responsible for hanging your own artwork, with help from the Mansion staff. If you don't have labels for your work, please fill out the RAL cards that will be available. If you print your own, print them on card stock. Do not use the sticky Avery labels, unless you adhere them to foam core or card stock. **Contact Diane Jeang, Glenview Member Show Coordinator, (301) 871-1589 or chickendoc44@gmail.com with questions.**

Monday delivery and hanging: 12PM–2PM & 5-7PM/ Sunday Gallery Opening: 1:30—3:30PM

Monday Pick up: before 11AM

Glenview Mansion Schedule				
2019				
	Member(s)	Mon &/or Tues Deliver 12-2&5-7	Sunday Gallery Opening 1:30-3:30	Monday Pick-up Before 11 am
FEB	Closed			
FEB/MAR	Closed			
MAR/APR	Closed			
MAY/JUNE	RAL Spring Show			
JUNE/JULY	Lisa Sieg/Mike Kuchinsky			
AUG/SEPT	Board Members' Show			
SEPT/OCT	Nighat Ahmed			
OCT/NOV	Cathy McDermott/ Susan Dunnell			
DEC	RAL Winter Show			
2020				
JAN/FEB	Diane Jeang			
FEB/MAR	Student Art Show			
MAR/APR				
MAY/JUNE	RAL Spring Show			
JUNE/JULY				
AUG/SEPT	Board Members' Show			
SEPT/OCT				
OCT/NOV	Stephanie			

Rockville Art League Newsletter February 2019

	Gustavson/ Sue Moses			
DEC	RAL Winter Show			

For additional information for members hanging in the conference rooms, please refer to the RAL web page: <http://www.rockvilleartleague.org/glenview.pdf>

At least one platter of finger foods (cookies, crackers/cheese, veggies/dip) should be supplied by the RAL artist on the day of the opening reception. Cups/napkins/water are provided by the City of Rockville for opening receptions. The Mansion will be open at 1 pm for the artist on the day of the opening reception.

RAL Ongoing Show List

Twinbrook Library – 202 Meadow Hall Drive, Rockville, Maryland

Shows for the library run from 1st of the month to the end of the month for 1 month shows. 5 medium to large paintings, Contact person: Christine Lundy, 240-777-0252.

Christine.lundy@montgomerycountymd.gov

	<u>From</u>	<u>To</u>
Open	Jan. 1, 2019	Feb. 1, 2019

Thomas Farm Community Center – 700 Fallsgrave Drive, Rockville, Maryland

12-16 medium to large paintings, ontact person: Melinda Norton (240) 314-8842.

email: mnorton@rockvillemd.gov

<u>Name</u>	<u>From</u>	<u>To</u>
Leita Gerson	Dec. 15, 2018	Mar. 15, 2019

Marilyn J. Praisner Library – 14910 Old Columbia Road, Burtonsville, Maryland

10 small to medium or 5-6 large paintings (10 hanging chains), Contact person: (240) 773-9455, Vera Ramaty

<u>Name</u>	<u>From</u>	<u>To</u>
Open	Dec. 15, 2018	Feb. 15, 2019

RAL BOARD OF DIRECTORS

Name	Position	E-mail
Patrick Sieg	<i>President</i>	president@rockvilleartleague.org
Lisa Sieg	<i>1st Vice President</i>	jshows@rockvilleartleague.org
Carlos Garcia	<i>2nd Vice President</i>	oshows@rockvilleartleague.org
Nighat Ahmed	<i>Program Coordinator</i>	programs@rockvilleartleague.org
Lisa Sieg	<i>Volunteer Coordinator</i>	volunteer@rockvilleartleague.org
Paula Zeller	<i>Membership</i>	membership@rockvilleartleague.org
Rob Gale	<i>Treasurer</i>	treasurer@rockvilleartleague.org
Cathy McDermott	<i>Secretary</i>	secretary@rockvilleartleague.org
Susan Dunnell	<i>Newsletter Editor</i>	newsletter@rockvilleartleague.org
Liliane Blom	<i>Liaison Officer</i>	liaison@rockvilleartleague.org
Dave Allen	<i>Publicity/marketing</i>	publicity@rockvilleartleague.org
Eric Goss	<i>Communications</i>	communications@rockvilleartleague.org
Lisa Sieg	<i>Hospitality</i>	hospitality@rockvilleartleague.org
Diane Jeang	<i>Monthly Member Shows</i>	mshows@rockvilleartleague.org
Patria Baranski	<i>Historian</i>	historian@rockvilleartleague.org
Michael Auger	<i>Webmaster</i>	webmaster@rockvilleartleague.org
Eileen Mader	<i>Founder</i>	

Rockville Art League
P.O. Box 4026
Rockville, MD 20850

