

# RAL NEWSLETTER Rockville Art League



RockvilleArtLeague.org

Vol. XXVIII No. 4



December 2018

**NEXT MEETING: December 6, 6:30PM**  
**Speaker: Sallie Davies: The Acrylic Painting Process**  
**Artists and Makers Studio II Building at 12276 Wilkins Avenue, Rockville, MD**

## Message from the President, Patrick Sieg

Dear Rockville Art League members,

“There are moments in our lives, there are moments in a day, when we seem to see beyond the usual. Such are the moments of our greatest happiness. Such are the moments of our greatest wisdom. If one could but recall this vision by some sort of sign. It was in this hope that the arts were invented. Sign-posts on the way to what may be. Sign-posts towards greater knowledge.”

American artist and educator Robert Henri said this nearly 100 years ago and it is still meaningful today. (If you are not familiar with this artist please “Google” him and admire his beautiful work.)

In our November meeting, photographer Michael Koren showed us how to use our smart phones to “see beyond the usual” and we are wiser as a result. Many attending members agree that his 90-minute presentation went by in a flash and felt that it could have continued for another 90 minutes (or more). Several of his slides are included later in this newsletter.



Two versions of a pumpkin photo

Next month, on December 6, Rockville Art League member and multiple award-winning



artist Sally Davies will share her story as an illustrator and artist. Sally is an “Artist and Makers” Studio Resident artist and I am much looking forward to her talk. She has terrific vision and her art portrays great happiness.

I understand that some of our members have joined the Rockville Art League for the exhibition opportunities. Of course, we all want to be able to showcase our work but the Rockville Art League offers so much more. Your membership in our league allows for our meetings, presentations, learning opportunities, fellowship and, yes, shows, thank you. We have had record attendance at our meetings this year and your support is much appreciated, as is your camaraderie.

(And Lisa Sieg can’t wait to organize our next member show.)



I am not sure when we will return to the Glenview Mansion and the status of the winter show is not yet clear. We had resigned ourselves to a likely delay and I am hopeful that the show will happen in February. Work on the renovation is underway but I do not have any word on the expected completion date. I promise to keep us all up to date.

We will certainly have our spring member show in the mansion in May/June and your RAL board members and I are looking at several opportunities for outside shows in the fall of 2019. Thank you all for your patience.

The weather has most definitely turned colder and winter is upon us. If colder weather drives us indoors, then perhaps some inside time can be spent in an art gallery. Or perhaps those photos that cry out as inspiration for a work of art could be addressed. The holiday season is a time for gift giving and I hope that you will give a loved one the gift of art (your own creation or the work of an admired follow artist) and give yourself the gift of time for a class or time to devote to your own vision and creativity.

Happy Thanksgiving to all and my very best wishes for the upcoming holiday season.

Thank you for being a Rockville Art League member.

Patrick Sieg  
President

---

**REMINDER: RAL’s 2018-2019  
Membership Year Began September 1**

Your dues support the excellent programming and opportunities RAL provides. If you have not yet renewed your membership, please take a moment and use PayPal via the RAL website.

Or, mail your check to:

Paula Zeller, Membership Chair  
627 Crown Park Ave.  
Gaithersburg, MD 20878  
Dues are \$40.

Questions? Please email Paula at:  
[membership@rockvilleartleague.org](mailto:membership@rockvilleartleague.org)





## Rockville Art League 2018-19 Speaker Series

*All events in the 2018 calendar year occur from 6:30-8:00 pm at the Artists and Makers Studio II Building at 12276 Wilkins Avenue, Rockville. Events are open to RAL Members and the General Public.*

A reminder: we are meeting at Artists & Makers 2 (12276 Wilkins Ave. Rockville) in the Hirsh Classroom, upstairs on the 2<sup>nd</sup> floor. Enter through Gallery 209 and take a moment to see what's on display this month. (Parking is behind the building.)

December 6th, 2018: **Sally Davies**  
“Talk and a demo on Acrylic painting process”

Sally Davies, studied illustration and graphic design at Sheridan College in Canada. Her illustrations have been published in magazines, cookbooks, menus, textbooks, posters, and 14 children's books in Canada and the US. Her award-winning illustrations are done with ink line and bright watercolor washes. Over the past 15 years, her large-scale acrylic on canvas paintings have been juried into numerous galleries in the mid-Atlantic region and won many prizes. She is a juried member of the Baltimore Watercolor Society, the Potomac Valley Watercolorists, and the Children's Book Guild of Washington, DC. Last summer, she had a solo show at the Art League Gallery at the Torpedo Factory in Alexandria. Her paintings are currently exhibited at Gallery 209 in Rockville.



“Time Travel: Armor Room, MET, NYC”



"Are We There Yet?"

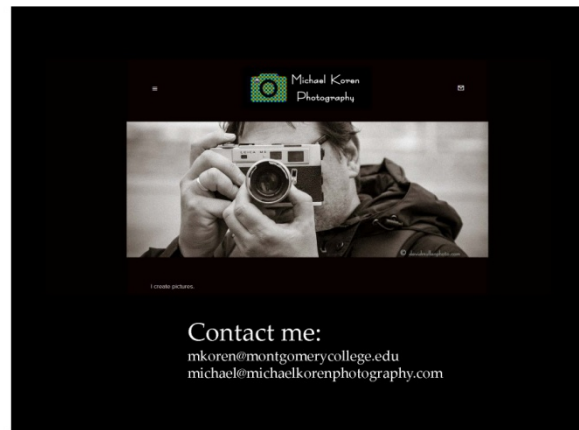


March 7th, 2019: **Maud Taber Thomas**  
“Portrait demonstration”

April 4th, 2019: **Michael Shibley**  
“Watercolor demo and talk”

**References to Michael Koren’s presentation**

As promised, references to Michael Koren’s smartphone apps are included here:





## Critique by Penny Kritt

### YELLOW

Do you ever just take some time to *think about colors*? It's a habit I got into a long time ago, long before my phone put all those cat videos at my fingertips.

Most of us use any yellow sparingly. We might use a yellow to tone down a hideous green or add it to a red to get a softer coral shade. But unless you're doing a painting of a wheat field ready for harvest, maybe you avoid large yellow shapes. But even though you may use small yellow shapes, using the right yellow is still critical.

Here's my usual reminder that *none of your paint colors is really a primary*, just red or just yellow or just blue. The best you can hope for is a secondary color. See Figure 1 below. For example, Hansa yellow has some red in it. Mix it with coral and you'll get brilliant, intense orange. But there's no blue that will give you a *bright* green. Manganese blue will come close, but French ultramarine also has red in it, so those greens will be dull, like avocado green. That's what happens when the third primary, in this case red, creeps in.

Hansa Yellow    Lemon Yellow



Figure 1

Lemon yellow omits the red but has some blue in it, so it has a slight green cast. This time, if you add it to manganese blue (that has some yellow in it), you'll get the color of grass that landscaping companies promise. But if you add coral to lemon yellow, you'll only get a muted peach, not bright orange. And if use rose instead of coral, you'll get a burnt orange color because there's blue in both the lemon yellow and the rose. (Any time you see the term "burnt" in the name of a color, it has all three primaries.)

The gray boxes below the color swatches above show that there is a slight value difference between the two colors. Hansa will be just a little bit darker unless you add water to lighten it. One interesting fact about Hansa is that adding *lots* of water will barely make a difference in its value. That's in contrast to a color like French ultramarine blue, where a little water will make dark fresh paint lighten to a light powder blue.

Are your yellows transparent or opaque? For example, like all quinacridones, a quinacridone yellow or gold is very transparent. Conversely, you can assume any ochre will be at least semi opaque. If your paint tubes don't tell you, you can go to the manufacturer's website and read about it. A transparent yellow will be like looking through a sheer piece of yellow cellophane and nothing will make it more opaque. You can use it alone and full strength as a glaze so it will slightly alter the color underneath. With opaque paints, adding medium or water will make them thinner and more transparent.

Yellow is always a light color, not even a mid tone. Straight out of the tube is as dark as a yellow will get – unless you add another color. This is a big deal, since the darker the shadow on a yellow object, the more the viewer "sees" sunlight. If your composition has a child wearing a yellow shirt, how will you build a dark(er) shadow color since yellow alone won't do the job?

Let's look at some yellow balls in various lighting conditions. Think about what time of day it is. What makes you come to that conclusion? Go ahead, I'll wait. . .



Figure 2

Since the hint of a highlight on the top of the ball and the shadow on the bottom are barely visible, it's late morning on an overcast day. Now, let's look at the same ball on a sunny day.





Figure 3

In Figure 3 above, the highlight and shadow are in the same location, so it's still the same time of day. But look at how the highlight at the top is much lighter and the shadow is much darker. That contrast explains that it's a sunny day. But don't you think there's something funky about that shadow? Let's tweak it a little with Figure 4 below.



Figure 4

So what's the difference? If it's not obvious, let's try the process of elimination. Maybe we can work it out that way. Both balls are the same bright (secondary!) yellow while their shadows are definitely a combination of all three primaries. Their shadow shapes are about the same and the values (amount of darkness) of the shadows are similar. Hmmmm, the shapes are the same, the values are the same, the intensity of the both the highlights and shadows are similar. What else is left?

If you guessed the *temperature* of the shadow shapes, you get an "A"! Neither Figures 3 and 4 have boring black or gray shadows. But Figure 3's shadow is cooler, more toward green. Figure 4 has a warmer shadow, a reddish brown. That would be closer to what it would look like in real life.

*If you'd like a gentle critique of your work, email me a photo at pennykritt@aol.com.*

**For classes or private lessons, contact Penny at 301/989-1799**

## MEMBER NEWS

**Michael Auger** has artworks included in an exhibit called "Fantasy, Sci-Fi, and Humor" which takes place now through Jan. 15th at: 506 S Frederick Ave., Gaithersburg, MD 20877.



## Professional Fine Art Restoration and Repair

Have your Fine Art Oil or Acrylic Paintings and Antique Frames Restored or Repaired with Museum Quality Work. Over 30 years in Fine Art Restoration Experience. Studio located in Rockville, Maryland.

For a Consultation at No Cost or Obligation to you, Contact:

**Abraham Garcia**

301-770-5015

[abrahamdesigns@hotmail.com](mailto:abrahamdesigns@hotmail.com)

[www.AbrahamArtImpressions.com](http://www.AbrahamArtImpressions.com)

## **Painting Workshop in Bruges**

August 5-9, 2019

Glen Kessler is currently gauging interest for running a 5-day painting workshop at The Flemish Classical Atelier in Bruges, Belgium. This 5-day workshop will take students on a



walking tour through the city of Bruges to gather photographs, teach Photoshop techniques for readying images for painting, then take students step-by-step through the process of creating their own masterwork. If there is interest, our group can also coordinate trips to museums, dining, and accommodations together.

If you are interested in going or learning more, please e-mail Glen at [TheCompassAtelier@gmail.com](mailto:TheCompassAtelier@gmail.com) to be added to our pre-registration list. We would need 15 participants to run the trip.



Photo by Lisa Sieg

### Kritt Studio Classes

#### **Painting Plants**

**Monday, January 14**  
**(Morning and Evening classes)**

#### **Drawing City Life**

**Tuesday, January 15**  
**(Morning and Evening classes)**

#### **Color for Artists**

**Monday, February 25**  
**(Morning and Evening classes)**

*There is currently a misprint about the start date. Contact me about changes.*

### **Drawing Landscapes** **Tuesday, February 26** **(Morning and Evening classes)**

**Advanced Groups and Private Lessons**  
**For more info: call Penny at 301/989-1799**



*A Work of Art by Debra Halprin*  
**Giclée Printing and Photography Service**  
 Create Fine Art Reproductions of your Paintings, Drawings and Photos on Watercolor Paper or Canvas

.12 cents per sq. inch on Paper  
 .15 cents per sq. inch on Canvas

Photography Starting at \$35 - Includes Digital Files, Proofs and Color Enhancements

**Mastering the Fine Art of Giclée Printing**  
[HalprinArt.com](http://HalprinArt.com)  
[Halprinart@aol.com](mailto:Halprinart@aol.com)  
 301-910-4750  
 Located in Rockville Maryland

### **HOW DO YOU CAPTURE LOVE IN A PAINTING?**

A pet portrait from master portraitist Glen Kessler gets pretty close.

Glen Kessler is accepting commissions now for the holidays. Glen has done over 200 pet portrait commissions including one for Cesar Milan, "The Dog Whisperer." Glen's work is known for its vibrant brushwork, elegant color, and emotional power.



It takes time to craft a work of art, so act now to get an UNFORGETTABLE gift for you and your family this season.



### EMOTIONAL DEPTH

Glen Kessler’s pet portraits are known for their emotional depth. Glen takes the time to get to know



you and your pet, then uses his skills to give you more than just a picture of what your pet looks like. You’ll have a painting that captures your

pet’s spirit and mood.

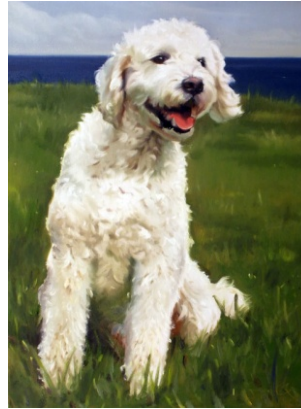
### QUALITY CRAFTSMANSHIP

Glen is a professionally trained artist with over 2 decades of experience. Glen uses only archival materials to craft your portrait. High quality oil paints and stretched canvas are used for each piece. Glen works to the highest standard of quality to create an image that will awe and inspire forever.

### AN HEIRLOOM



When you capture a family member in paint on canvas, you are creating a family heirloom and a work of art that will be cherished for decades to come.



To commission your painting for the holidays, please contact:  
glenkesslerart@gmail.com



Photo by Lisa Sieg





**GLENVIEW MANSION CONFERENCE ROOM SHOWS**

You can show your artwork in Glenview Mansion for one month if you have received a 1<sup>st</sup>, 2<sup>nd</sup>, 3<sup>rd</sup> or honorable mention award in an RAL juried show. Artists may have both rooms to exhibit in if a second artist doesn't sign up for the same month within two months of the show's start date. The receptions at Glenview mansion are 1:30-3:30 PM on the Sunday after hanging. Preferred drop off and pick up times for Glenview Shows are from 9 am to 12 noon. Drop off/pickups are Mondays (unless a holiday). If you are unavailable on the date for pickup, please arrange for someone to pick up for you. There is no room to store your artwork at the Mansion. If you are unable to drop off/pick up on the assigned dates and you can't find someone else to drop off/pick up for you, please choose a month in which you can make those dates.

For artwork delivery, please unwrap your work and take the wrappings with you. Please bring pliers (needle nose are easy to work with). You may use the hand truck that is at the Mansion to move your artwork from your vehicle. There is no staff at the mansion available to help you move your artwork into the conference rooms. You are responsible for hanging your own artwork, with help from the Mansion staff. If you don't have labels for your work, please fill out the RAL cards that will be available. If you print your own, print them on card stock. Do not use the sticky Avery labels, unless you adhere them to foam core or card stock. **Contact Diane Jeang, Glenview Member Show Coordinator, (301) 871-1589 or [chickendoc44@gmail.com](mailto:chickendoc44@gmail.com) with questions.**

Monday delivery and hanging: 12PM–2PM & 5-7PM/ Sunday Gallery Opening: 1:30—3:30PM

Monday Pick up: before 11AM

<b>Glenview Mansion Schedule</b>				
	<b>Member(s)</b>	<b>Mon &amp;/or Tues Deliver 12-2&amp;5-7</b>	<b>Sunday Gallery Opening 1:30-3:30</b>	<b>Monday Pick-up Before 11 am</b>
<b>2018</b>				
	<b>Member(s)</b>	<b>Drop-Off</b>	<b>Sunday Gallery Opening 1:30-3:30</b>	<b>Pick-up</b>
<b>AUG/DEC</b>	<b>Closed</b>			
<b>2019</b>				
	<b>Member(s)</b>	<b>Mon &amp;/or Tues Deliver 12-2&amp;5-7</b>	<b>Sunday Gallery Opening 1:30-3:30</b>	<b>Monday Pick-up Before 11 am</b>
<b>JAN</b>	<b>Closed</b>			
<b>FEB</b>	<b>TBD</b>			
<b>FEB/MAR</b>	<b>Student Art Show</b>			
<b>MAR/APR</b>	<b>Joanie Grosfield/ Teresa Hull</b>			
<b>MAY/JUNE</b>	<b>RAL Spring Show</b>			
<b>JUNE/JULY</b>	<b>Lisa Sieg/Mike Kuchinsky</b>			
<b>AUG/SEPT</b>	<b>Board Members' Show</b>			
<b>SEPT/OCT</b>	<b>Nighat Ahmed</b>			
<b>OCT/NOV</b>	<b>Cathy McDermott/ Susan Dunnell</b>			
<b>DEC</b>	<b>RAL Winter Show</b>			



<b>2020</b>				
<b>JAN/FEB</b>	<b>Diane Jeang</b>			
<b>FEB/MAR</b>	<b>Student Art Show</b>			
<b>MAR/APR</b>				
<b>MAY/JUNE</b>	<b>RAL Spring Show</b>			
<b>JUNE/JULY</b>				
<b>AUG/SEPT</b>	<b>Board Members' Show</b>			
<b>SEPT/OCT</b>				
<b>OCT/NOV</b>	<b>Stephanie Gustavson/ Sue Moses</b>			
<b>DEC</b>	<b>RAL Winter Show</b>			

For additional information for members hanging in the conference rooms, please refer to the RAL web page: <http://www.rockvilleartleague.org/glenview.pdf>

At least one platter of finger foods (cookies, crackers/cheese, veggies/dip) should be supplied by the RAL artist on the day of the opening reception. Cups/napkins/water are provided by the City of Rockville for opening receptions. The Mansion will be open at 1 pm for the artist on the day of the opening reception.

**RAL Ongoing Show List**

**Twinbrook Library – 202 Meadow Hall Drive, Rockville, Maryland**

Shows for the library run from 1<sup>st</sup> of the month to the end of the month for 1 month shows. 5 medium to large paintings, Contact person: Christine Lundy, 240-777-0252.

[Christine.lundy@montgomerycountymd.gov](mailto:Christine.lundy@montgomerycountymd.gov)

	<b><u>From</u></b>	<b><u>To</u></b>
Open	Nov. 1, 2018	Dec. 1, 2018

**Thomas Farm Community Center – 700 Fallsgrave Drive, Rockville, Maryland**

12-16 medium to large paintings, Contact person: Martha Coester (240) 314-8842.

<b><u>Name</u></b>	<b><u>From</u></b>	<b><u>To</u></b>
Valthea Fry	Nov. 15, 2018	Dec. 15, 2018

**Marilyn J. Praisner Library – 14910 Old Columbia Road, Burtonsville, Maryland**

10 small to medium or 5-6 large paintings (10 hanging chains), Contact person: (240) 773-9455, Vera Ramaty

<b><u>Name</u></b>	<b><u>From</u></b>	<b><u>To</u></b>
Open	Nov. 15, 2018	Dec. 15, 2018



### RAL BOARD OF DIRECTORS



<b>Name</b>	<b>Position</b>	<b>E-mail</b>
Patrick Sieg	<i>President</i>	<a href="mailto:president@rockvilleartleague.org">president@rockvilleartleague.org</a>
Lisa Sieg	<i>1<sup>st</sup> Vice President</i>	<a href="mailto:jshows@rockvilleartleague.org">jshows@rockvilleartleague.org</a>
Carlos Garcia	<i>2<sup>nd</sup> Vice President</i>	<a href="mailto:oshows@rockvilleartleague.org">oshows@rockvilleartleague.org</a>
Nighat Ahmed	<i>Program Coordinator</i>	<a href="mailto:programs@rockvilleartleague.org">programs@rockvilleartleague.org</a>
Lisa Sieg	<i>Volunteer Coordinator</i>	<a href="mailto:volunteer@rockvilleartleague.org">volunteer@rockvilleartleague.org</a>
Paula Zeller	<i>Membership</i>	<a href="mailto:membership@rockvilleartleague.org">membership@rockvilleartleague.org</a>
Rob Gale	<i>Treasurer</i>	<a href="mailto:treasurer@rockvilleartleague.org">treasurer@rockvilleartleague.org</a>
Cathy McDermott	<i>Secretary</i>	<a href="mailto:secretary@rockvilleartleague.org">secretary@rockvilleartleague.org</a>
Susan Dunnell	<i>Newsletter Editor</i>	<a href="mailto:newsletter@rockvilleartleague.org">newsletter@rockvilleartleague.org</a>
Liliane Blom	<i>Liaison Officer</i>	<a href="mailto:liaison@rockvilleartleague.org">liaison@rockvilleartleague.org</a>
Dave Allen	<i>Publicity/marketing</i>	<a href="mailto:publicity@rockvilleartleague.org">publicity@rockvilleartleague.org</a>
Eric Goss	<i>Communications</i>	<a href="mailto:communications@rockvilleartleague.org">communications@rockvilleartleague.org</a>
Lisa Sieg	<i>Hospitality</i>	<a href="mailto:hospitality@rockvilleartleague.org">hospitality@rockvilleartleague.org</a>
Diane Jeang	<i>Monthly Member Shows</i>	<a href="mailto:mshows@rockvilleartleague.org">mshows@rockvilleartleague.org</a>
Patria Baranski	<i>Historian</i>	<a href="mailto:historian@rockvilleartleague.org">historian@rockvilleartleague.org</a>
Michael Auger	<i>Webmaster</i>	<a href="mailto:webmaster@rockvilleartleague.org">webmaster@rockvilleartleague.org</a>
Eileen Mader	<i>Founder</i>	

Rockville Art League  
P.O. Box 4026  
Rockville, MD 20850



Photo by Lisa Sieg