

**RAL NEWSLETTER**  
**Rockville Art League**

RockvilleArtLeague.org

Vol. XXVIII No. 2

October 2018

**NEXT MEETING: October 4th, 6:30PM**

**Speaker: Fran Abrams: How to Get Your Artwork into Exhibitions**

**Artists and Makers Studio II Building at 12276 Wilkins Avenue, Rockville, MD**

**Message from the President,  
Patrick Sieg**

Dear Rockville Art League members,

Thank you for coming to our first meeting of the 2018/2019 session.

We were fortunate to have had Dr. Irina Stotland discuss post impressionist painter Paul Gauguin. And we had a record number of attendees for a September meeting.



Thanks to Lisa Sieg for bringing the refreshments and making everyone feel welcome. Thanks to Rob Gale for arriving early to help with our set up and to find extra chairs when the original number were filled. Thanks to Paula Zeller for taking on our group's

membership duties. Thanks to Sarah Sohraby for showing us her work during the first “gentle critique” of the season. And thanks again to all of you who have renewed your membership. Our meetings are not possible without your support.

I miss our traditional meeting location at the Glenview Mansion and I look forward to getting back there once the parking lot renovations are completed and I am very grateful that we can meet this fall in the Hirsh Classroom at Artists and Makers 2. I hope you will all arrive a little bit early to see the art on display in Gallery 209. A number of members are on display there and the exhibition changes every month.

Our next meeting will feature artist Fran Abrams who will speak on the topic “getting your artwork into exhibitions.” I am much looking forward to Fran’s talk and believe that there are strategies that may help all of us secure an audience for our work.

I recently read a biography of French artist Henri Matisse. He struggled to have his work shown, especially in his early career. Today his work sells for millions of dollars and he is

known as one of the most creative painters of his generation.

He struggled his whole life to be true to his vision and to be uniquely creative and also to get the recognition that his work deserved...in his lifetime.

He famously said the following things...

“It has bothered me all my life that I do not paint like everyone else.”

“There is nothing more difficult for a truly creative painter than to paint a rose, because before he can do so he has to first forget all the roses that were ever painted.”

“Creativity takes courage.”

Matisse was courageous, he took risks to be unique and he was often criticized for not painting like other artists. He was the original “fauve” artist (wild beast artist) and wasn’t afraid to paint a green stripe down the middle of his wife’s portrait.

And eventually his genius was recognized and collectors not only went to exhibitions showing his work but also supported him financially through purchases and commissions.

I much admire Matisse and the world is a better place because of his belief in himself, his art and his vision.



And I admire the artists in our art league and your willingness to put your work on display

and be true to yourselves and, as a result, make our world a little more beautiful. Some extra beauty is very much welcome especially these days.

I look forward to seeing you in our October RAL meeting (on October 4th at Artists and Makers 2).

Sincerely,  
Patrick Sieg  
President

---

**RAL’s 2018-2019 membership year begins  
September 1**

Renewal Membership is \$40

Please renew through the RAL website with  
**Paypal**

**OR Mail to:** Paula Zeller - Membership  
Chairperson

627 Crown Park Ave.

Gaithersburg, MD 20878

Questions? Please email Paula at:

[membership@rockvilleartleague.org](mailto:membership@rockvilleartleague.org)

We have **42** membership renewals to date!



## Rockville Art League 2018-19 Speaker Series

All events in the 2018 calendar year occur from 6:30-8:00 pm at the Artists and Makers Studio II Building at 12276 Wilkins Avenue, Rockville. Events are open to RAL Members and the General Public.



**October 4th, 2018: Fran Abrams**  
*“How to get your artwork into exhibitions”*

Fran Abrams, a resident of Rockville, MD, holds an undergraduate degree in art and architecture and a graduate degree in urban planning. She will present on the process for having your artwork accepted into exhibitions.

In January 2000, after making a New Year’s resolution to return to her roots as an artist, she

began studying and creating with polymer clay. She retired from her day job in July 2010 after 41 years of public service in government and nonprofit agencies in Montgomery County, MD. She then helped to establish the Betty Mae Kramer Gallery and Music Room in the Civic Center in downtown Silver Spring, MD, serving as manager from 2010-2012.



Fran’s work is shown regularly at Foundry Gallery ([www.foundrygallery.org](http://www.foundrygallery.org)), a nonprofit, artist-run gallery in Washington, DC. In addition, her work, in competition with more traditional mediums, has been juried into many exhibits in the greater DC metropolitan area and other parts of the country. She also has had work juried into national exhibits of polymer clay art in Lexington, MA in 2010 and in St. Paul, MN in 2013. In May 2014, her piece titled, “Warmth of the Fire,” won Best in 2D Art in the International Polymer Clay Awards competition that included entries from around the world. That piece is now in the collection of the Racine Art Museum in Racine, WI.

November 1st, 2018: **Michael Koran**  
*“Artistic expression through smartphone”*

December 6th, 2018: **Sally Davies**  
*“Talk and a demo on Acrylic painting process”*

March 7th, 2019: **Maud Taber Thomas**  
“Portrait demonstration”

April 4th, 2019: **Michael Shibley**  
“Watercolor demo and talk”

## Critique by Penny Krittr

### Digital Art

Even if you’ve already started using a digital device to create art, you probably have questions about how you can use digital tools.

If we loosely define “art” as the combination of lines, shapes and colors, you can even create some interesting images on very old versions of Microsoft Word. For example, how wide a line you choose, what shapes you select, and the colors you make them already give you an unlimited set of tools to work with. Add that you can overlap and/or group them, move and resize those groups, invert any or all of them and it can keep you busy for hours on end.

Newer technology like tablets lets you set up a studio virtually (yes, that’s a pun) anywhere. For the purpose of this column, we’ll talk about an app called Procreate that’s available for about \$10 for Apple devices. The range of things you can do with it in some ways exceeds Photoshop. The real stumbling block is that with a \$10 app, you don’t get a lot of help explaining *what it does*, let alone *how to use the functions*.

This issue is true with most art materials. For example, you can spend hundreds of dollars on the perfect sable brush, but it doesn’t come with a manual that shows you how to make different kinds of brush strokes or how to care for it.

So what’s an artist to do? Generically, find the answers to the following questions. What does this app or product do? How do I get it to do those things? Where will they be useful? Why will it be useful in that location? Try YouTube for tutorials.

I’m not here to recommend any app, but I can give you the best place to start, and that’s with understanding making and using digital brushes. All

art apps use brushes, and the terminology and functions are similar. One common element from Photoshop to Procreate is that they have brushes that you can modify in a variety of ways. Here’s some ideas on how to make and/or modify a brush.

Here’s a brief overview of the main elements to try with the art app you use.

Brush size: Like the physical brushes we use, digital ones can be different sizes (widths). You can preset a digital brush to be wide or narrow, and with some apps on a touch screen, increasing the pressure of your finger or stylus will widen the line. Lessen the pressure and the line gets narrower.

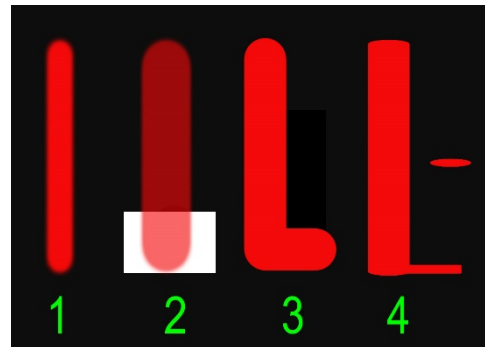


Figure 1

Figure 1 above shows a variety of brush strokes that are easy to make. They all use exactly the same color. Line No. 1 acts like a narrow round (pointed like a pencil) brush *with soft, blurred edges* that would be useful in doing shadows or trees in the background. No. 2 is a larger version of the same brush but it has *less opacity/more transparency*. It’s like watercolor paint with lots of water, or oils and acrylics with lots of medium added. The purpose of this is to tint, rather than cover up what is below. You can see it more clearly at the bottom where the black under-color has been removed.

Line 3 is the same size, but with *total opacity and hard edges*. It’s the kind of stroke that is often used to build a strong center of interest in a design. Line 4 is like a flat/chisel brush -- the little mark to the right shows you what you would see if you just lightly dabbed the brush one time on paper. Notice that the beginning and ending of the brush stroke is different than on Line 3, especially when the brush stroke changes direction – without you changing the position of your hand. It’s great for calligraphy.

You can also modify images without using brushes at all. A newer function is the ability to divide an image into sections that replicate any move in one area to all the others. That lets you create symmetrical patterns like Figure 2 below with amazing speed and accuracy. In effect, the image below was divided into 6 equal wedges radiating out from a central point. Anything done in any wedge was automatically duplicated in the others.

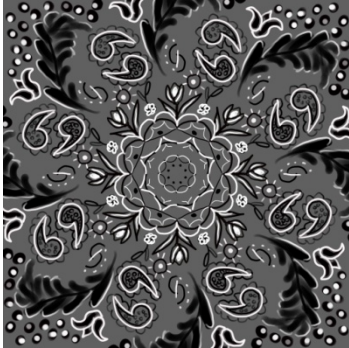


Figure 2

Then this single image could be imported into a larger document and repeated to make a pattern. In Figure 3 below, I've just copied the square above 3 more times.

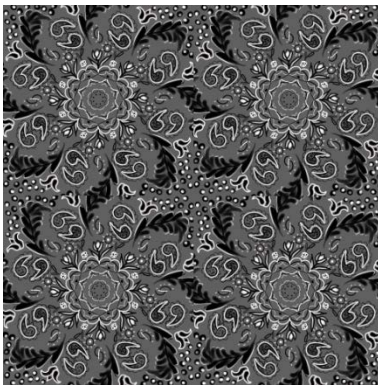


Figure 3

These apps also let you distort images in a variety of ways – and you can *usually* undo that distortion!



Figure 4

Figure 4 above was a digital design I did for a scarf. I liked the colors, but the shapes were boring. The “liquefy” command created Figure 5 below.

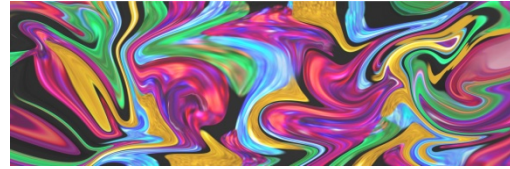


Figure 5

Isn't that cool?

*If you'd like a workshop on creating digital art, let me know at [pennykritt@aol.com](mailto:pennykritt@aol.com).*

**For classes or private lessons, contact Penny at 301/989-1799**

©Penny Kritt 2018

## MEMBER NEWS

**Mike Kuchinsky** has a couple of paintings in the Mixed media show at the Kentlands Mansion through November 4th.

Betsy Baden  
Donna Baron  
Jeff Bohlander  
Marylou Bono  
Jasmine Bryant

Laura Renee Davis  
Sandra Davis  
Jabari Jefferson  
Roxana Rojas-Luzon  
Michael Kuchinsky

**Exploring Mixed Media**  
Kentlands Mansion  
September 7—November 4, 2018  
Artists' Reception  
September 27, 7-8:30 p.m.

Kentlands Mansion  
350 Kent Square Rd  
Gaithersburg, MD

Steve Mockrin  
Karen Peacock  
Michelle Puhl-Price  
Shyam Rele  
James Russell  
Linda Slattery Sherman

Eneida Somarriba  
Francine Stowe-Sinkler  
Jeanne Sullivan  
Jenna Wright  
Alexey Zoob

On Wednesday, October 10<sup>th</sup>, from 6:30-8:30 **Debra Halprin** will be speaking about the art of giclée printing at the Artists and Makers Studios on Wilkins Ave.

She will be discussing the printing process and what it entails, the questions artists need to

consider when having their work reproduced, how to market giclée prints, and ways to enhance your giclée prints. She will also review the tricks on how to photograph artwork.

**When:** Wednesday, October 10 from 6:30-8:30 pm.

**Where:** Hirsh Studio Classroom at Artist and Makers 2, 12276 Wilkins Ave., Rockville

**RSVP:** Please RSVP to [alan@alanrichartist.com](mailto:alan@alanrichartist.com) As usual, we invite you to bring a savory or sweet snack or beverage to the meeting.

**Fine Art Restoration for oils, acrylics, frame restoration, etc.**

Specializing in antique artwork. Over thirty years in fine art restoration experience. Museum Quality work. For free estimates, please contact: Abraham Garcia by phone: 301-770-5015 or email: [abrahamdesigns@hotmail.com](mailto:abrahamdesigns@hotmail.com). [www.AbrahamArtImpressions.com](http://www.AbrahamArtImpressions.com)

**Painting Workshop in Bruges**  
August 5-9, 2019

Glen Kessler is currently gauging interest for running a 5-day painting workshop at The Flemish Classical Atelier in Bruges, Belgium. This 5-day workshop will take students on a walking tour through the city of Bruges to gather photographs, teach Photoshop techniques for readying images for painting, then take students step-by-step through the process of creating their own masterwork. If there is interest, our group can also coordinate trips to museums, dining, and accommodations together.

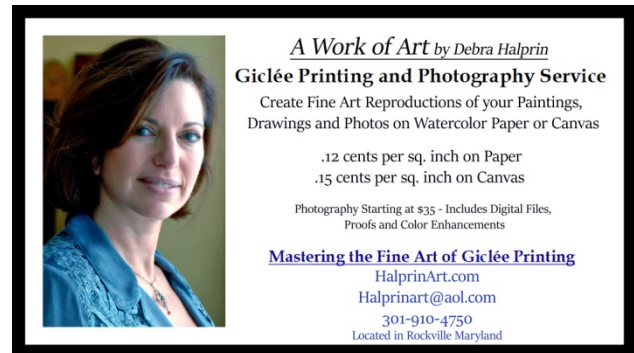
If you are interested in going or learning more, please e-mail Glen at [TheCompassAtelier@gmail.com](mailto:TheCompassAtelier@gmail.com) to be added to our pre-registration list. We would need 15 participants to run the trip.

**Kritt Studio Classes**

**Drawing Animals**  
**Tuesday, October 30**  
**(Morning and Evening classes)**

**Painting Landscapes**  
**Monday, October 29**  
**(Morning and Evening classes)**

**Advanced Groups and Private Lessons**  
**For more info: call Penny at 301/989-1799**



*A Work of Art* by Debra Halprin  
**Giclée Printing and Photography Service**  
Create Fine Art Reproductions of your Paintings,  
Drawings and Photos on Watercolor Paper or Canvas

.12 cents per sq. inch on Paper  
.15 cents per sq. inch on Canvas

Photography Starting at \$35 - Includes Digital Files,  
Proofs and Color Enhancements

**Mastering the Fine Art of Giclée Printing**  
[HalprinArt.com](http://HalprinArt.com)  
[Halprinart@aol.com](mailto:Halprinart@aol.com)  
301-910-4750  
Located in Rockville Maryland

**HOW DO YOU CAPTURE LOVE IN A PAINTING?**

A pet portrait from master portraitist Glen Kessler gets pretty close.

Glen Kessler is accepting commissions now for the holidays. Glen has done over 200 pet portrait commissions including one for Cesar Milan, "The Dog Whisperer." Glen's work is known for its vibrant brushwork, elegant color, and emotional power.



It takes time to craft a work of art, so act now to get an UNFORGETTABLE gift for you and your family this season.

### EMOTIONAL DEPTH

Glen Kessler's pet portraits are known for their emotional depth. Glen takes the time to get to know



you and your pet, then uses his skills to give you more than just a picture of what your pet looks like. You'll have a painting that captures your

pet's spirit and mood.

### QUALITY CRAFTSMANSHIP

Glen is a professionally trained artist with over 2 decades of experience. Glen uses only archival materials to craft your portrait. High quality oil paints and stretched canvas are used for each piece. Glen works to the highest standard of quality to create an image that will awe and inspire forever.



### AN HEIRLOOM

When you capture a family member in paint on canvas, you are creating a family heirloom and a

work of art that will be cherished for decades to come.



To commission your painting for the holidays, please contact:

glenkesslerart@gmail.com

### Opportunities

**The Maryland Photography Alliance (MPA) is proud to present a seminar on "Classic Street Photography: What the Masters Can Teach Us".**

What makes a great street photograph? What techniques, equipment, compositional elements and psychology help elevate street shooting to a fine art? In this projector-driven seminar led by Leo Howard Lubow, we'll explore these questions and others as we view and deconstruct the work and general approach of a variety of street masters, including Walker Evans, Henri Cartier-Bresson, Alfred Eisenstaedt, Elliot Erwitt, Diane Arbus, Sebastião Salgado, Garry Winogrand, Steve McCurry, Joel Meyerowitz, Vivian Maier, and a host of others whose work we promise you've never seen. Along the way, we'll also consider whether all great street photographers have at least one element in common: an underlying vision or personal philosophy of the world.

The date of this 1-Day Seminar is Saturday, October 13, 2018. The price of the seminar is \$125; however, MPA members will only pay \$99 by using our club promotion code – GCC

For more information and to register visit <https://www.mdphotoalliance.org/leo/> Seating is limited, so act today!!!

***GLENVIEW MANSION CONFERENCE ROOM SHOWS***

You can show your artwork in Glenview Mansion for one month if you have received a 1<sup>st</sup>, 2<sup>nd</sup>, 3<sup>rd</sup> or honorable mention award in an RAL juried show. Artists may have both rooms to exhibit in if a second artist doesn't sign up for the same month within two months of the show's start date. The receptions at Glenview mansion are 1:30-3:30 PM on the Sunday after hanging. Preferred drop off and pick up times for Glenview Shows are from 9 am to 12 noon. Drop off/pickups are Mondays (unless a holiday). If you are unavailable on the date for pickup, please arrange for someone to pick up for you. There is no room to store your artwork at the Mansion. If you are unable to drop off/pick up on the assigned dates and you can't find someone else to drop off/pick up for you, please choose a month in which you can make those dates.

For artwork delivery, please unwrap your work and take the wrappings with you. Please bring pliers (needle nose are easy to work with). You may use the hand truck that is at the Mansion to move your artwork from your vehicle. There is no staff at the mansion available to help you move your artwork into the conference rooms. You are responsible for hanging your own artwork, with help from the Mansion staff. If you don't have labels for your work, please fill out the RAL cards that will be available. If you print your own, print them on card stock. Do not use the sticky Avery labels, unless you adhere them to foam core or card stock. **Contact Diane Jeang, Glenview Member Show Coordinator, (301) 871-1589 or [chickendoc44@gmail.com](mailto:chickendoc44@gmail.com) with questions.**

Monday delivery and hanging: 12PM–2PM & 5-7PM/ Sunday Gallery Opening: 1:30—3:30PM

Monday Pick up: before 11AM

| <b>Glenview Mansion Schedule</b> |   |                                   |                                     |                                |
|----------------------------------|---|-----------------------------------|-------------------------------------|--------------------------------|
|                                  | Member(s)                                 | Mon &/or Tues<br>Deliver 12-2&5-7 | Sunday Gallery<br>Opening 1:30-3:30 | Monday Pick-up<br>Before 11 am |
| <b>2018</b>                      |   |                                   |                                     |                                |
|                                  | Member(s)                                 | Drop-Off                          | Sunday Gallery<br>Opening 1:30-3:30 | Pick-up                        |
| <b>AUG/DEC</b>                   | <b>Closed</b>                             |                                   |                                     |                                |
| <b>2019</b>                      |   |                                   |                                     |                                |
|                                  | Member(s)                                 | Mon &/or Tues<br>Deliver 12-2&5-7 | Sunday Gallery<br>Opening 1:30-3:30 | Monday Pick-up<br>Before 11 am |
| <b>JAN</b>                       | <b>Closed</b>                             |                                   |                                     |                                |
| <b>FEB</b>                       | <b>RAL Winter Show</b>                    |                                   |                                     |                                |
| <b>FEB/MAR</b>                   | <b>Student Art Show</b>                   |                                   |                                     |                                |
| <b>MAR/APR</b>                   | <b>Joanie Grosfield/<br/>Teresa Hull</b>  |                                   |                                     |                                |
| <b>MAY/JUNE</b>                  | <b>RAL Spring Show</b>                    |                                   |                                     |                                |
| <b>JUNE/JULY</b>                 | <b>Lisa Sieg/Mike<br/>Kuchinsky</b>       |                                   |                                     |                                |
| <b>AUG/SEPT</b>                  | <b>Board Members<br/>Show</b>             |                                   |                                     |                                |
| <b>SEPT/OCT</b>                  | <b>Nighat Ahmed</b>                       |                                   |                                     |                                |
| <b>OCT/NOV</b>                   | <b>Cathy McDermott/<br/>Susan Dunnell</b> |                                   |                                     |                                |
| <b>DEC</b>                       | <b>RAL Winter Show</b>                    |                                   |                                     |                                |



**Rockville Art League Newsletter October 2018**

|                  |   |  |  |  |
|------------------|---|--|--|--|
| <b>2020</b>      |   |  |  |  |
| <b>JAN/FEB</b>   | <b>Diane Jeang</b>                        |  |  |  |
| <b>FEB/MAR</b>   | <b>Student Art Show</b>                   |  |  |  |
| <b>MAR/APR</b>   |   |  |  |  |
| <b>MAY/JUNE</b>  | <b>RAL Spring Show</b>                    |  |  |  |
| <b>JUNE/JULY</b> |   |  |  |  |
| <b>AUG/SEPT</b>  | <b>Board Members Show</b>                 |  |  |  |
| <b>SEPT/OCT</b>  |   |  |  |  |
| <b>OCT/NOV</b>   | <b>Stephanie Gustavson/<br/>Sue Moses</b> |  |  |  |
| <b>DEC</b>       | <b>RAL Winter Show</b>                    |  |  |  |

For additional information for members hanging in the conference rooms, please refer to the RAL web page: <http://www.rockvilleartleague.org/glenview.pdf>

At least one platter of finger foods (cookies, crackers/cheese, veggies/dip) should be supplied by the RAL artist on the day of the opening reception. Cups/napkins/water are provided by the City of Rockville for opening receptions. The Mansion will be open at 1 pm for the artist on the day of the opening reception.

**RAL Ongoing Show List**

**Twinbrook Library – 202 Meadow Hall Drive, Rockville, Maryland**

Shows for the library run from 1<sup>st</sup> of the month to the end of the month for 1 month shows. 5 medium to large paintings, Contact person: Christine Lundy, 240-777-0252.

[Christine.lundy@montgomerycountymd.gov](mailto:Christine.lundy@montgomerycountymd.gov)

|      |                    |                  |
|------|--------------------|------------------|
|      | <b><u>From</u></b> | <b><u>To</u></b> |
| Open | Sept. 1, 2018      | Oct. 1, 2018     |

**Thomas Farm Community Center – 700 Fallsgrave Drive, Rockville, Maryland**

12-16 medium to large paintings, Contact person: Martha Coester (240) 314-8842.

|                    |                    |                  |
|--------------------|--------------------|------------------|
| <b><u>Name</u></b> | <b><u>From</u></b> | <b><u>To</u></b> |
| Valthea Fry        | Aug. 15, 2018      | Oct. 15, 2018    |

**Marilyn J. Praisner Library – 14910 Old Columbia Road, Burtonsville, Maryland**

10 small to medium or 5-6 large paintings (10 hanging chains), Contact person: (240) 773-9455, Vera Ramaty

|                    |                    |                  |
|--------------------|--------------------|------------------|
| <b><u>Name</u></b> | <b><u>From</u></b> | <b><u>To</u></b> |
| Open               | Sept. 15, 2017     | Oct. 15, 2018    |

---

## RAL BOARD OF DIRECTORS

| <b>Name</b>     | <b>Position</b>                      | <b>E-mail</b>  |
|-----------------|--------------------------------------|--|
| Patrick Sieg    | <i>President</i>                     | <a href="mailto:president@rockvilleartleague.org">president@rockvilleartleague.org</a>           |
| Lisa Sieg       | <i>1<sup>st</sup> Vice President</i> | <a href="mailto:jshows@rockvilleartleague.org">jshows@rockvilleartleague.org</a>                 |
| Carlos Garcia   | <i>2<sup>nd</sup> Vice President</i> | <a href="mailto:oshows@rockvilleartleague.org">oshows@rockvilleartleague.org</a>                 |
| Nighat Ahmed    | <i>Program Coordinator</i>           | <a href="mailto:programs@rockvilleartleague.org">programs@rockvilleartleague.org</a>             |
| Emily Pearce    | <i>Volunteer Coordinator</i>         | <a href="mailto:volunteer@rockvilleartleague.org">volunteer@rockvilleartleague.org</a>           |
| Paula Zeller    | <i>Membership</i>                    | <a href="mailto:membership@rockvilleartleague.org">membership@rockvilleartleague.org</a>         |
| Rob Gale        | <i>Treasurer</i>                     | <a href="mailto:treasurer@rockvilleartleague.org">treasurer@rockvilleartleague.org</a>           |
| Cathy McDermott | <i>Secretary</i>                     | <a href="mailto:secretary@rockvilleartleague.org">secretary@rockvilleartleague.org</a>           |
| Susan Dunnell   | <i>Newsletter Editor</i>             | <a href="mailto:newsletter@rockvilleartleague.org">newsletter@rockvilleartleague.org</a>         |
| Liliane Blom    | <i>Liaison Officer</i>               | <a href="mailto:liaison@rockvilleartleague.org">liaison@rockvilleartleague.org</a>               |
| Dave Allen      | <i>Publicity/marketing</i>           | <a href="mailto:publicity@rockvilleartleague.org">publicity@rockvilleartleague.org</a>           |
| Eric Goss       | <i>Communications</i>                | <a href="mailto:communications@rockvilleartleague.org">communications@rockvilleartleague.org</a> |
| Lisa Sieg       | <i>Hospitality</i>                   | <a href="mailto:hospitality@rockvilleartleague.org">hospitality@rockvilleartleague.org</a>       |
| Diane Jeang     | <i>Monthly Member Shows</i>          | <a href="mailto:mshows@rockvilleartleague.org">mshows@rockvilleartleague.org</a>                 |
| Patria Baranski | <i>Historian</i>                     | <a href="mailto:historian@rockvilleartleague.org">historian@rockvilleartleague.org</a>           |
| Michael Auger   | <i>Webmaster</i>                     | <a href="mailto:webmaster@rockvilleartleague.org">webmaster@rockvilleartleague.org</a>           |
| Eileen Mader    | <i>Founder</i>                       |  |

Rockville Art League  
P.O. Box 4026  
Rockville, MD 20850

