



RockvilleArtLeague.org

Vol. XXVII No. 8

April 2018

**NEXT MEETING: April 5, 6:30PM  
Gavin Glakas: Portrait Demonstration**

## **Message from the President, Patrick Sieg**

Hello Rockville Art League members,

Our spring members' juried art show is from May 6 through June 15, 2018, at the Glenview Mansion Gallery. There is much more information later in the newsletter but importantly:

- Art delivery and registration is on Monday, April 30.
- Our judge will be Gonzalo Ruiz-Navarro; an artist, educator and RAL presenter.
- New, we will be using an online art registration process (and the traditional paper form process will also be acceptable)
- Lisa will be reaching out for volunteers.

Famous artist and portrait painter Gavin Glakas will be our presenter at the April 5 meeting. Gavin is an art celebrity here in the DC area and has portrait paintings hanging in the US Capital and the Virginia Statehouse (and his paintings are included in countless other private and public collections as well). He is also an award winner in past Portrait Society of America

annual conferences. And Gavin is a terrific teacher and a great person. Our meeting will start with refreshments at 6:15 PM in the Glenview Mansion auditorium.



Gonzalo Ruiz Navarro demonstrated pastel painting in our March meeting and not only was he outstanding, but he has agreed to judge our spring members' show. We are lucky to have him with us again this spring.

I am so proud to have had such excellent artists speak at our meetings this season. Edgar Degas said of artists: "Art is not what you see but what you make others see."

Our presenters gave us new insights into mediums and techniques, the business of art and the history of art. Each of them made/helped us see new things artistic.



Thank you, Nighat Ahmed, for managing the invitations and logistics for our presenters. Each meeting seems to have set new attendance records and thanks to all for supporting our league.

Please reach out to Nighat and/or me if you have suggestions for presenters next year. I hope we can arrange for some of this year's speakers to present next year. Plus there will be many opportunities for new speakers and topics.

After years of service on the RAL board of directors, Emily Pearce and Sabiha Iqbal will be stepping down at the end of this season. Their service is very much appreciated and they both made a difference for our league...thank you. Two members have stepped up to join our board and support our mission.

- Paula Zeller will support membership.
- Dave Allen will support publicity.

Additionally, these two new board members will bring their experience and thoughtfulness to our decision-making and add new and unique perspectives.

Thank you, Paula and Dave, for stepping up; we are honored to have you on our board.

As mentioned previously, the mansion will be closed for needed improvements from August 2018 through January 2019. Our September, October and November RAL meetings will be hosted in the Artists and Makers Studios 2 on Wilkins Avenue in Rockville.

The winter Juried Members Show that is usually hosted by the mansion in December will be moved to February 2019 and will be in the first month the mansion reopens. There will be more to come on this later in the year.

I look forward to seeing you at our next meeting on April 5.

Would you like to show one of your recent art creations in our gentle critique? We have time for two or so members to present. As added incentive, if two members volunteer for gentle critique, then the group will not be asked to comment on another Patrick Sieg original. Please let me know and the first two to volunteer will be "on deck".

I am glad that you are artists and I'm glad that you are Rockville Art League members.

Sincerely,

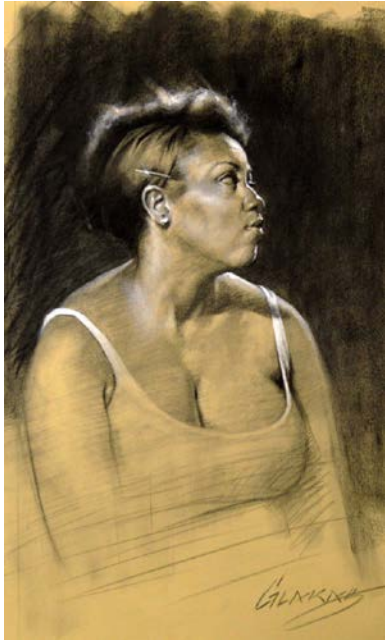
Patrick Sieg  
President

## Rockville Art League 2017-18 Speaker Series

*All events in this series occur from 6:30-8:00 pm at Glenview Mansion 603 Edmonston Drive, Rockville MD 20851. Events are open to RAL Members and the General Public.*

### April 5, 2018: Gavin Glakas

Gavin Glakas grew up in Bethesda, Maryland and started drawing about the time he started walking. He studied at Washington University in St. Louis and the Slade School of Fine Art in London.



Evyan's Moment

After graduation, Glakas spent a year and a half working on Capitol Hill as a Senate staffer. He had planned to go to law school, but after an eight-month illness culminating in the removal of a tumor from his lung at the age of 24, he decided to pursue his lifelong ambition of a career as an artist.

Glakas began showing his work in galleries almost immediately and spent five years studying with Robert Liberace and Danni Dawson. He has won numerous honors for his

artwork, including awards from the Portrait Society of America and the Butler Institute of American Art. His paintings have been featured on NBC News and in The Washington Post, as well as American Art Collector, International Artist, The American Scholar, Art Business News, and The Strand magazines, and exhibited at museums and galleries throughout the country.

Glakas recently unveiled his official portrait of Virginia Governor Terry McAuliffe in the State Capitol in Richmond. His paintings also hang in the permanent collections of the US Senate, the House of Representatives, Georgetown & George Washington Universities and The Society of the Four Arts Museum in Palm Beach, FL, as well as numerous private collections.

He teaches painting and drawing at the Yellow Barn Studio and is represented by Principle Gallery of Alexandria, VA, and Charleston, SC.



Reid's Portrait

**RAL Juried Members' May Show  
GLENVIEW MANSION  
May 6 - June 15, 2018**

**SPECIAL NOTE:** WE ARE WORKING ON AN ELECTRONIC REGISTRATION PROCESS TO STREAMLINE THE ENTRY AND LABELING PROCESS WHICH WILL BE DETAILED FOR YOU IN A SEPARATE EMAIL MESSAGE. THE TRADITIONAL ENTRY FORM FOUND IN THIS NEWSLETTER ENTITLED "2018 RAL MEMBERS SHOW AGREEMENT" WILL ALSO BE ACCEPTED. PLEASE NOTE: ALL MEMBERS SUBMITTING WORK WILL BE REQUIRED TO FILL OUT AND SIGN THE "SHOW AGREEMENT" PORTION OF THE FORM.

**Judge:** Gonzalo Ruiz Navarro is an award-winning artist from Spain, whose oils and pastels are infused by passion for light and color, following the tradition of the impressionists. Gonzalo's love for tradition meets with exquisite use of color, freedom of composition and expressiveness of strokes. He has been featured in media such as the New York Times and Fine Art Views, where he has been described as "A master at evoking a mood and a sense of time and place". Gonzalo holds a Master's in Fine Arts from the University of Valencia, Spain, and has been working as an art instructor for more than 22 years. Currently based in Washington DC, Gonzalo is one of the most popular art instructors in the area, teaching oils, pastels and drawing at the Yellow Barn Studio in Glen Echo, MD.

Gonzalo Ruiz Navarro will conduct a gallery walk-through on Thursday, May 10, at 6:45 pm. Light refreshments served at 6:15. Awards at 6:30 pm.

**Eligibility and rules:** The following rules apply for all works entered. Each member *in good standing* may enter two works. The show fee is \$5. The maximum length of any framed side is

60 inches. Only **original** works securely framed with hanging wire are acceptable. The entries must have been completed within the last two years and may not have been exhibited previously in a RAL Member Show. No reproductions, no giclées and no wet canvases are allowed. A work having multiple framed parts must meet the two works per member criteria. Entries not meeting the show conditions will not be accepted. RAL retains the right to determine suitability of work for entry in this show. The artist's signature on the Show Agreement also constitutes a commitment to donate 20% of the sale price to the City of Rockville for works sold during the show.

**Categories:**

- Oils and acrylics
- Watercolors
- Pastels, drawings, and hand pulled prints
- Mixed media, collage, experimental, and original computer-generated art
- Photographs
- Sculpture and ceramics

**Awards:**

- Best in Show (cash prize)
- First, Second and Third in all categories (cash prizes)
- Honorable Mention at the judge's discretion

**Delivery:** **MONDAY, April 30**, 11:30 am-1:30 pm and 5:00 -7:00 pm register and deliver your work to the second floor Glenview Mansion Art Gallery, Rockville Civic Center, 603 Edmonston Dr., Rockville. On Tuesday, May 1, please phone the pickup hotline after 2 PM, **240-314-8682**, to see if your work was juried into the show. If your number is listed, then you or your designee *must* pick up your work on Tuesday, May 1, 3:00-5:00 pm or Wednesday, May 2, 11:30 am -1:00 pm.

**Reception:** Sunday, May 6, from 1:30-4:30 PM. Light refreshments.

**Gallery Walk Through with Judge:** Thursday, May 10. Light refreshments, 6:15 pm and **AWARDS** at 6:30pm, Walk-through at 6:45 pm. (Note: this in in place of the May meeting.)

**Final Pick Up:** Monday, June 18, 11:30 am – 1:30 PM and 5:00-6.30 pm. You or your designee must pick up your work. Any work left after Monday 6:30 pm will not be insured. There is no storage available.

**Sales:** The Glenview Mansion staff will manage art sales. The artist's signature on the **Show Agreement** also constitutes a commitment to donate 20% of the sale price to the City of Rockville for works sold during the show.

**We need volunteers** to help register, move, hang, label and release entries. Please check your schedules and sign up online on Sign-up Genius.

<http://www.signupgenius.com/go/4090c49a5ac23abfd0-raljuried1>

*It takes a village* and we hope you'll be part of ours! (The \$5 entry fee will be waived if you volunteer for the show.)

Monday, April 30– Delivery of work and Registration:

- 11:30 am -1:30 pm
- 5:00-7:00 pm

Tuesday, May 1 – Pick up of *unaccepted* works:

- 3:00-5:00 pm

Wednesday, May 2 –

- Pick-up of unaccepted work: 11:30 am-1:00 pm
- Hanging/Labeling:
  - 9:30 am-12 Noon
  - 1:00-4:00 pm

Thursday, May 3– Final details and tagging

- 9:30-11:30 am

Sunday, May 6 - Reception set up, oversee the tables, and clean up:

- 1:00 – 3:30 pm

Monday, June 18 - Final Pick-up:

- 11:30 am -1:30 pm
- 5:00-6:30 pm

When signing up, please indicate the time you can help. Can't stay the whole time? Any amount of time you can work is appreciated. All slots filled and you want to volunteer or need help signing up? Please contact Lisa Sieg. (If hanging, please bring a pair of needle nose pliers and gloves.) We need you to help make the Members' Show a successful one. Please check your calendar and sign up!

Questions regarding the show? Please contact:

Lisa Sieg: [jshows@rockvilleartleague.org](mailto:jshows@rockvilleartleague.org)

Patrick Sieg: [president@rockvilleartleague.org](mailto:president@rockvilleartleague.org)



Don your favorite topper for the...

### **First Annual Mad Hatter's Tea Party/Brunch!**

featuring bubbly prosecco punch, tea\* (of course!), lovely sandwiches, scones, pastries, and prizes.

Hats and costumes encouraged, ages 21+ only.

\$20 ticket – all proceeds go directly to City of Rockville Arts Programs

Sunday, April 22, 11:30am-1:30 pm  
Glenview Mansion  
603 Edmonston Dr  
Rockville MD 20851

\*No shrinkage will occur due to tea consumption.

**Wanted and needed:** caricaturists or anyone able to draw quick sketches of people on **Saturday, May 5**, from 11am-2pm at Johns Hopkins in Rockville for “**The Tree House Tour de Cookie.**” This annual charity event is a popular and delicious biking fund raiser that raises awareness and support for The Tree House Child Advocacy Center of Montgomery County MD. Bikers choose between a 12, 27 or 43 mile-ride, trekking from one cookie stand to another and everyone starts and ends up at Johns Hopkins in Rockville.

**Face painters** also needed. Interested artists (and **student artists** too – can earn SSL hours) please contact:

*Nina Blecher*  
*Director of Community Partnerships*  
*The Tree House CAC*  
[tourdecookie@treehousemd.org](mailto:tourdecookie@treehousemd.org)  
240-777-4699  
[www.treehousetourdecookie.com](http://www.treehousetourdecookie.com)

## Critique by Penny Kritt

### Leaves and Branches

The arrival of spring is announced by our palettes singing to us that flowers need to be painted. Dogwood blossoms, tulips and daffodils are already squeezing out fresh paint for us. Unless you’re a complete newbie, you’ve already been through this process many times. This year, let’s add a new twist to improve your skill set.

We all love spring flowers. They’re bright, they smell great and they just make folks feel happy, especially after a long winter. And as the subject of artwork, they can be the perfect example of *trite*. Whether it’s a vase of flowers or a “portrait” of a single perfect rose, how many times have you dismissed these compositions with a quick glance at the pretty flowers? Especially if you’re an advanced artist who wants to enter an art show with a floral theme, what will make the judges stand in awe of *your* work?

The deceptively simple answer is to look at the “non-flower” part of the plant(s). Part of *seeing like an artist* is noticing the beauty, the sculptural quality and the texture of the branches, stems and leaves. Judges are bored with perfect paintings of glorious roses. Your composition might just get in a show because your *portrait* of a rose bush was only branches, leaves and buds.

Let’s test your powers of observation, because if you didn’t notice the details, you won’t be able to paint them.

Take a moment to think about the leaves on a rose bush. How big are they? What color and how large? Are the branches and stems directly across from each other or staggered?



For this kind of rose, the leaves are symmetrically placed across from each other. Unlike on many roses, these leaves don't come to a sharp point although they have serrated edges. And here's a surprise – the leaves closest to the branch are smaller! The leaves at the furthest point from the branch are larger. The back of the leaf is slightly lighter in color and they lie flat instead of curling.

Maybe you should skip flowers altogether and look for other plants. Have you ever seen a fiddlehead fern?



Their curled tops resemble a violin and that's where their name comes from. Look at how their curvilinear form contrasts with the straight symmetry of the fern leaves in the background. If you're like me, all that green is just boring. The unique structure of the plant isn't enough to overcome it. A simple solution is to change the time of day. Let's conjure up the pinks and lavender that show up near sunset. The colors might not be completely accurate, but the composition is *painterly!*



Now, let's talk about tree bark.

First, what color is tree bark? If you answered somewhere close to the standard brown crayon color, nope! Most of the trees in our area have bark that is closer to gray than brown. Look at the samples below.



The photo above is a dogwood branch. I'd bracketed it with swatches of both brown and gray so you can compare. Maybe it's really a gray with a touch of brown, but it certainly isn't that brown crayon color.



In the photo above, I've flipped half of the image so you can easily compare the light and shadow sides of the branch. Because it's a sunny day, there's a big difference between the light and dark parts of the branch, and again, there's little to no brown. Did you see the little specks of red and green?

While these samples have some texture to the bark, it's not enough to merit a close up. Here are some other options.



The image above is a sycamore. It actually has a little bit of brown speckled around the trunk, but patches of pale green and beige predominate. If you want a tree with bark that could stand alone as an entire composition, go look at river birches!



If you're a gardener, you know that birches are messy trees that shed their bark. It usually runs between a pale white/beige and a dark chocolate brown/black. *River birches* put their cousins to shame! As their layers of bark unfold and shed, you'll see purple and lavender, pink and teal. It's a worthwhile use of your time to visit a nursery and have your camera with you. It's time to go on a photo safari. Or curl up with Google Images!

*If you'd like a gentle critique of your work, email me a photo at [pennykritt@aol.com](mailto:pennykritt@aol.com).*

## MEMBER NEWS

### Paintings by Sabiha Iqbal



Glenview Mansion Art Gallery  
On Exhibit: March 25—April 28, 2018  
Opening Reception: Sunday, March 25  
1:30 PM to 3:30 PM





Mark your calendars! **Liliane Blom** will have a solo sound and light video installation show at Dupont Underground. Opening June 29th, music, reception and artist talk! Details to follow.

<https://www.lilianeblom.com/events/opening-reception-and-concert-at-dupont-underground>



**Patricia Zannie's**, "September Splendor," has been accepted into the Annual Garrett Park Juried Invitational Show, and will be on display at the Penn Place Gallery in Garrett Park from March 25 thru April 22, 2018. Please join Pat for the Opening reception at the Penn Place Gallery, 4600 Waverly Avenue, Garrett Park, MD on Sunday, March 25, from 3-5 p.m. catered by Black Market Bistro.



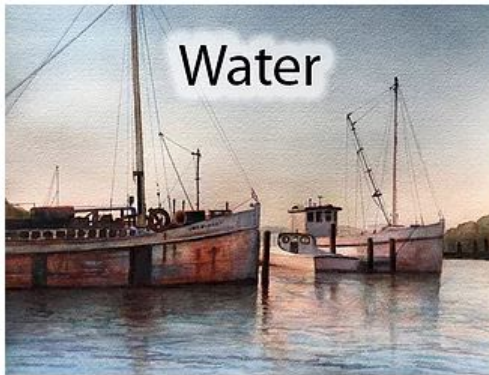
## ART OF THE PRINT

curated by Susan D Pearcy

Kentlands Arts Barn  
311 Kent Square Road  
Gaithersburg, MD 20878

February 23 to April 2, 2018

Both traditional and contemporary styles and techniques of printmaking are represented. Featured printmakers include **Maurice Margulies**, Tina Thieme Brown, Meaghan Busch, Bobby Donovan, Annette Gandy Fortt, Jenny Freestone, Susan Goldman, Pauline Jakobsberg, Carol Moore, Nina Muys, Lee Newman, Susan Due Pearcy, Elizabeth Sikorska, Linda Slattery-Sherman, Allison Spain, Terry Svat, Helga Thomson, and Ann Zahn.



Winnie Coggins and **Karen Norman**  
At the Artists' Gallery,  
8197 Main Street, Ellicott City

"Essential Elements: Clay and Water"  
February 27 - March 25

[www.artistsgalleryec.com](http://www.artistsgalleryec.com)



Gallery 209's April Show features contemporary paintings and sculptures by 22 member artists in their new third floor gallery, with an opening reception Friday, April 6 from 6 to 9 pm and running through May 1.

Abstract to representational art is on view, including work by **Angela Lacey** with her striking cityscape watercolors, along with over 100 works by other artist-members.

Regular viewing days are Tuesdays through Sundays, noon to 4 pm. Free parking is in the rear.

Located in the Artists and Makers Studios 2, at 12274 Wilkins Ave., Rockville MD. Gallery 209 is a part of the extensive art community of over 150 artists with many working studios and galleries. For information call [301-622-0546](tel:301-622-0546) or Contact: [Artists@Gallery209Art.com](mailto:Artists@Gallery209Art.com). Visit: [Gallery209.art.com](http://Gallery209.art.com).

## Upcoming Workshop at the Compass Atelier

TINA GARRETT will run a 3-day workshop on *Starting Methods* for painting the figure on April 27-29. Students will work from the live model with Tina guiding them through 3 different techniques to master this daunting subject.



Information on all of these and other great programming can be found at [www.TheCompassAtelier.com](http://www.TheCompassAtelier.com).

### Kritt Studio Classes

**Beginning Drawing classes start Monday, April 9 daytime and evening**

**Beginning Painting classes start Tuesday, April 10 daytime and evening**

**Mix the Perfect Color Workshop Saturday, April 21 from 10 - 3**

**Painting a Still Life classes start Monday, May 7 daytime and evening**

**Drawing the City classes start Tuesday, May 8 daytime and evening**

**Advanced Groups and Private Lessons  
For more info: call Penny at 301/989-1799**

An advertisement for Giclée Printing and Photography Service. It features a portrait of Debra Halprin on the left. The text on the right reads: "A Work of Art by Debra Halprin", "Giclée Printing and Photography Service", "Create Fine Art Reproductions of your Paintings, Drawings and Photos on Watercolor Paper or Canvas", ".12 cents per sq. inch on Paper", ".15 cents per sq. inch on Canvas", "Photography Starting at \$35 - Includes Digital Files, Proofs and Color Enhancements", "Mastering the Fine Art of Giclée Printing", "HalprinArt.com", "Halprinart@aol.com", "301-910-4750", and "Located in Rockville Maryland".

*A Work of Art by Debra Halprin*  
**Giclée Printing and Photography Service**  
Create Fine Art Reproductions of your Paintings,  
Drawings and Photos on Watercolor Paper or Canvas  
.12 cents per sq. inch on Paper  
.15 cents per sq. inch on Canvas  
Photography Starting at \$35 - Includes Digital Files,  
Proofs and Color Enhancements  
**Mastering the Fine Art of Giclée Printing**  
HalprinArt.com  
Halprinart@aol.com  
301-910-4750  
Located in Rockville Maryland



**GLENVIEW MANSION CONFERENCE ROOM SHOWS**

You can show your artwork in Glenview Mansion for one month if you have received a 1<sup>st</sup>, 2<sup>nd</sup>, 3<sup>rd</sup> or honorable mention award in an RAL juried show. Artists may have both rooms to exhibit in if a second artist doesn't sign up for the same month within two months of the show's start date. The receptions at Glenview mansion are 1:30-3:30 PM on the Sunday after hanging. Preferred drop off and pick up times for Glenview Shows are from 9 am to 12 noon. Drop off/pickups are Mondays (unless a holiday). If you are unavailable on the date for pickup, please arrange for someone to pick up for you. There is no room to store your artwork at the Mansion. If you are unable to drop off/pick up on the assigned dates and you can't find someone else to drop off/pick up for you, please choose a month in which you can make those dates.

For artwork delivery, please unwrap your work and take the wrappings with you. Please bring pliers (needle nose are easy to work with). You may use the hand truck that is at the Mansion to move your artwork from your vehicle. There is no staff at the mansion available to help you move your artwork into the conference rooms. You are responsible for hanging your own artwork, with help from the Mansion staff. If you don't have labels for your work, please fill out the RAL cards that will be available. If you print your own, print them on card stock. Do not use the sticky Avery labels, unless you adhere them to foam core or card stock. **Contact Diane Jeang, Glenview Member Show Coordinator, (301) 871-1589 or swinedoc@yahoo.com with questions.** If you need to contact Julie Farrell, please send an email tojfarrell@rockvillemd.gov.

Monday delivery and hanging: 12PM–2PM & 5-7PM/ Sunday Gallery Opening: 1:30—3:30PM  
Monday Pick up: before 11AM

<b>Glenview Mansion Schedule</b>				
<b>2017</b>				
	<b>Member(s)</b>	Mon &/or Tues Deliver 12-2&5-7	Sunday Gallery Opening 1:30-3:30	Monday Pick-up Before 11 am
<b>DEC</b>	<b>RAL Winter Show</b>	Nov. 27	Dec. 3	Jan. 2
<b>2018</b>				
	<b>Member(s)</b>	Drop-Off	Sunday Gallery Opening 1:30-3:30	Pick-up
<b>JAN/FEB</b>	<b>Mike Kuchinsky/Diane Jeang</b>	Jan. 2 12 – 4:30 pm	Jan. 7	Fri. Feb. 2 9-11 am
<b>FEB/MAR</b>	<b>Student Art Show</b>	Sun. Feb. 4	Feb. 11	Mar. 13 – Mar. 15
<b>MAR/APR</b>	<b>Sabiha Iqbal (2)</b>	Mon. Mar. 19	Mar. 25	Mon. Apr30 9-11 am
<b>MAY/JUNE</b>	<b>RAL Spring Show</b>	Mon. Apr. 30 12-2 pm, 5-7 pm	May 6	Mon. June 18 12-2 pm, 5-7 pm
<b>JUNE/JULY</b>	<b>Harriet Gordon/Norda Kittrie</b>	Mon June 18 9-11 am	June 24	Mon. July 30 9-11 am
<b>AUG/SEPT</b>	<b>Board Member's Show</b>	Mon. July 30 12 – 4:30 pm	Aug. 5	Mon. Sept. 10 9-11 am
<b>SEPT/OCT</b>	<b>Closed</b>	-	-	-

**Rockville Art League Newsletter April 2018**

<b>OCT/NOV</b>	<b>Closed</b>	-	-	-
<b>DEC</b>	<b>Closed</b>	-	-	-
<b>2019</b>				
	<b>Member(s)</b>	Mon &/or Tues Deliver 12-2&5-7	Sunday Gallery Opening 1:30-3:30	Monday Pick-up Before 11 am
<b>JAN/FEB</b>	<b>Closed</b>	-	-	-
<b>FEB/MAR</b>	<b>Student Art Show</b>			
<b>MAR/APR</b>	<b>Joanie Grosfield/ Teresa Hull</b>			
<b>MAY/JUNE</b>	<b>RAL Spring Show</b>			
<b>JUNE/JULY</b>				
<b>AUG/SEPT</b>	<b>Board Members Show</b>			
<b>SEPT/OCT</b>	<b>Nighat Ahmed</b>			
<b>OCT/NOV</b>	<b>Cathy McDermott/ Susan Dunnell</b>			
<b>DEC</b>	<b>RAL Winter Show</b>			
<b>JAN/FEB</b>				
<b>MAR/APR</b>				
<b>MAY/JUNE</b>	<b>RAL Spring Show</b>			
<b>JUNE/JULY</b>				
<b>AUG/SEPT</b>	<b>Board Members Show</b>			
<b>SEPT/OCT</b>				
<b>OCT/NOV</b>	<b>Stephanie Gustavson/ Sue Moses</b>			
<b>DEC</b>	<b>RAL Winter Show</b>			

For additional information for members hanging in the conference rooms, please refer to the RAL web page: <http://www.rockvilleartleague.org/glenview.pdf>

At least one platter of finger foods (cookies, crackers/cheese, veggies/dip) should be supplied by the RAL artist on the day of the opening reception. Cups/napkins/water are provided by the City of Rockville for opening receptions. The Mansion will be open at 1 pm for the artist on the day of the opening reception.



**RAL ONGOING SHOW LIST**

**Twinbrook Library - 202 Meadow Hall Drive, Rockville, Maryland**

<b><u>Name</u></b>	<b><u>From</u></b>	<b><u>To</u></b>
Nighat Ahmed	Feb. 1, 2018	Mar. 1, 2018

**Thomas Farm Community Center – 700 Falls Grove Drive, Rockville, Maryland**

12-16 medium to large paintings, Contact person: Martha Coester (240) 314-8842

<b><u>Name</u></b>	<b><u>From</u></b>	<b><u>To</u></b>
Sharill Dittmann (non-RAL)	Jan. 15, 2018	Apr. 15, 2018
Lieta Gerson	Apr. 15, 2018	July 15, 2018

**Marilyn J. Praisner Library – 14910 Old Columbia Road, Burtonsville, Maryland**

10 small to medium or 5-6 large paintings (10 hanging chains), Contact person: (240) 773-9455 Vera Ramaty

<b><u>Name</u></b>	<b><u>From</u></b>	<b><u>To</u></b>
open	Feb. 15, 2017	Apr. 15, 2018

---

## RAL BOARD OF DIRECTORS

<b>Name</b>	<b>Position</b>	<b>E-mail</b>
Patrick Sieg	<i>President</i>	<a href="mailto:president@rockvilleartleague.org">president@rockvilleartleague.org</a>
Lisa Sieg	<i>1<sup>st</sup> Vice President</i>	<a href="mailto:jshows@rockvilleartleague.org">jshows@rockvilleartleague.org</a>
Carlos Garcia	<i>2<sup>nd</sup> Vice President</i>	<a href="mailto:oshows@rockvilleartleague.org">oshows@rockvilleartleague.org</a>
Nighat Ahmed	<i>Program Coordinator</i>	<a href="mailto:programs@rockvilleartleague.org">programs@rockvilleartleague.org</a>
Emily Pearce	<i>Volunteer Coordinator</i>	<a href="mailto:volunteer@rockvilleartleague.org">volunteer@rockvilleartleague.org</a>
Emily Pearce	<i>Membership</i>	<a href="mailto:membership@rockvilleartleague.org">membership@rockvilleartleague.org</a>
Rob Gale	<i>Treasurer</i>	<a href="mailto:treasurer@rockvilleartleague.org">treasurer@rockvilleartleague.org</a>
Cathy McDermott	<i>Secretary</i>	<a href="mailto:secretary@rockvilleartleague.org">secretary@rockvilleartleague.org</a>
Susan Dunnell	<i>Newsletter Editor</i>	<a href="mailto:newsletter@rockvilleartleague.org">newsletter@rockvilleartleague.org</a>
Liliane Blom	<i>Liaison Officer</i>	<a href="mailto:liaison@rockvilleartleague.org">liaison@rockvilleartleague.org</a>
Sabiha Iqbal	<i>Publicity/marketing</i>	<a href="mailto:publicity@rockvilleartleague.org">publicity@rockvilleartleague.org</a>
Eric Goss	<i>Communications</i>	<a href="mailto:communications@rockvilleartleague.org">communications@rockvilleartleague.org</a>
Lisa Sieg	<i>Hospitality</i>	<a href="mailto:hospitality@rockvilleartleague.org">hospitality@rockvilleartleague.org</a>
Diane Jeang	<i>Monthly Member Shows</i>	<a href="mailto:mshows@rockvilleartleague.org">mshows@rockvilleartleague.org</a>
Patria Baranski	<i>Historian</i>	<a href="mailto:historian@rockvilleartleague.org">historian@rockvilleartleague.org</a>
Michael Auger	<i>Webmaster</i>	<a href="mailto:webmaster@rockvilleartleague.org">webmaster@rockvilleartleague.org</a>
Eileen Mader	<i>Founder</i>	

Rockville Art League  
P.O. Box 4026  
Rockville, MD 20850



# 2018 RAL Members Show Agreement

I agree to the rules of the show as presented in this announcement, that my entries are my original works, and that I will not hold RAL or The Glenview Mansion or City of Rockville responsible for any possible loss or damage to my entries while on the property. I understand that all reasonable care will be taken in handling entries. I give RAL permission to photograph my artworks and publish them as appropriate. Please print legibly so the information is easily and accurately read. Thanks!

Printed Name \_\_\_\_\_ Date \_\_\_\_\_

Signature \_\_\_\_\_ Phone \_\_\_\_\_

Address \_\_\_\_\_

E-Mail \_\_\_\_\_

I am entering the following work(s):

Work 1: Title \_\_\_\_\_

Medium \_\_\_\_\_ Price \$ \_\_\_\_\_

Work 2: Title \_\_\_\_\_

Medium \_\_\_\_\_ Price \$ \_\_\_\_\_

# CALENDAR

Show: REF# \_\_\_\_\_  
May 6 - June 15, 2018

Delivery of works:  
Monday, April. 30, 11:30AM – 1:30PM and 5:00-7:00PM

Hotline for unaccepted list:  
Tuesday, May 1, after 2:00PM  
240-314-8682

Pickup of unaccepted works:  
Tuesday, May 2, 3:00-5:00PM  
Wednesday, May 3, 11:30AM-1:00PM

Opening Reception:  
Sunday, May 6, 1:30 - 3:30 PM

Judge's Gallery Walk Through  
Thursday, May 10, 6:15PM,  
**AWARDS** 6:30PM

Final Pickup:  
**Monday, June 18**, 11:30AM-1:30PM  
and 5:00-6:30PM

# ROCKVILLE ART LEAGUE



Attach one 2-column form (below) to each entry: (Please note: a REF# will be given to you at registration.)  
Tape form to the back upper right corner of each work. The left side will be cut off and used to compile the program.

-----CUT ALONG THIS DOTTED LINE-----

Attach tape to right side of this form and tape to back upper right corner of your work.

TAPE HERE ----->

**WORK 1:** REF # \_\_\_\_\_ REF # \_\_\_\_\_

ARTIST \_\_\_\_\_ ARTIST \_\_\_\_\_

TITLE \_\_\_\_\_ TITLE \_\_\_\_\_

MEDIUM \_\_\_\_\_ MEDIUM \_\_\_\_\_

PRICE \$ \_\_\_\_\_ PRICE \$ \_\_\_\_\_

PHONE \_\_\_\_\_ EMAIL \_\_\_\_\_ PHONE \_\_\_\_\_ EMAIL \_\_\_\_\_

-----CUT ALONG THIS DOTTED LINE-----

Attach tape to right side of this form and tape to back upper right corner of your work.

TAPE HERE ----->

**WORK 2:** REF# \_\_\_\_\_ REF # \_\_\_\_\_

ARTIST \_\_\_\_\_ ARTIST \_\_\_\_\_

TITLE \_\_\_\_\_ TITLE \_\_\_\_\_

MEDIUM \_\_\_\_\_ MEDIUM \_\_\_\_\_

PRICE \$ \_\_\_\_\_ PRICE \$ \_\_\_\_\_

PHONE \_\_\_\_\_ EMAIL \_\_\_\_\_ PHONE \_\_\_\_\_ EMAIL \_\_\_\_\_