



RockvilleArtLeague.org

Vol. XXVII No. 5

January 2018

**NEXT MEETING: February 1, 6:30PM**  
**Michael Koren – Smartphone Photography Workshop**

### **Message from the President, Patrick Sieg**

Dear Rockville Art League Members,

Have you ever entered one of your favorite works of art in a show only to be notified that it was unworthy of a prize or even inclusion? I have.



Have you ever felt like the judge of an art show was “clueless,” that your piece was as good or

better than other entries and that you would “show them” by never entering that show again? I have.

This is how my December began, driving in traffic to collect my “masterpiece” and feeling disgruntled and discouraged.

And then I counted to ten, took a breath and questioned why I was so surprised.

In my corporate career I didn’t get every promotion I applied for (and sometime when I did I wished I hadn’t).

And I don’t win every tennis match I play.

So why should I expect that every juried show I enter will include my work?



An art show’s judge is carefully chosen and “clueless” is not a criterion for their

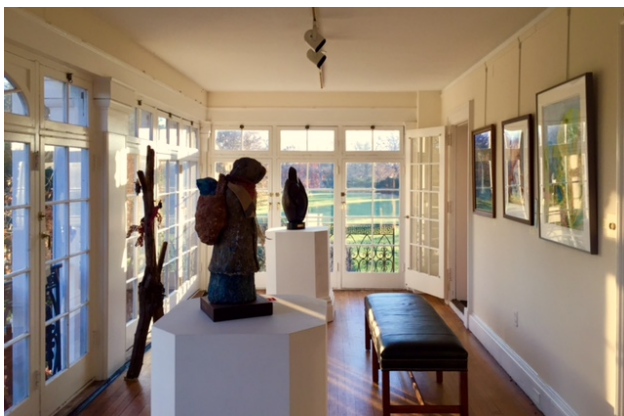
selection...experience and credentials are. Their choices on which art is included and who wins an award is subjective and well founded. Juried art shows carry the risk of rejection and all of us who submit work and assume that risk should be commended. We would not have beautiful and meaningful shows if artists did not have the courage to enter.

I take solace in the fact that my best work was submitted even if it was not the taste of the judge. I am lucky to be an artist and understand that the creative process is valuable all by itself. I plan to continue entering juried art shows and taking a shot at inclusion.

The Rockville Art League members' show is running through the 29<sup>th</sup> of December. Huge thanks to Lisa Sieg and many RAL members for working so hard to organize and create a beautiful show.

I am encouraged by the record number of pieces entered even when, for capacity purposes, that necessitated a record number of pieces be turned away.

And I am grateful to our judge, Lorena Bradford, for taking on the job and having vision, empathy and appreciation for all of the entries, the artists and their creative process.

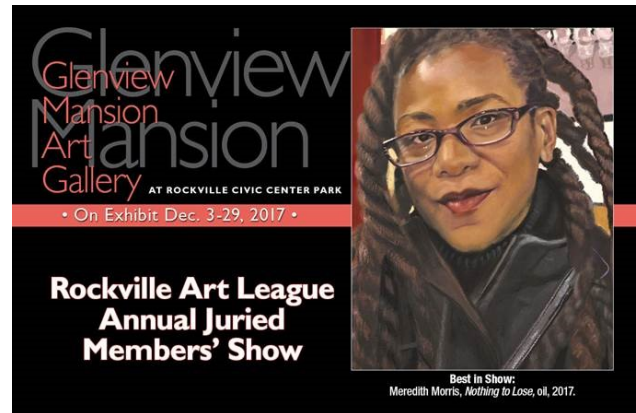


Our next meeting will be on Thursday, February 1, and our speaker, Michael Koren, will be covering the topic of Smart Phone Photography.

I am much looking forward to his “hands on” presentation.

I hope you all have a happy and safe holiday season and a great start to 2018. And please bring your friends and family to the Glenview Mansion to see our art show.

Sincerely,  
Patrick Sieg  
President



## Pick Up for Juried Members' Show

Those who had work in the December Juried Members' Show are reminded to please pick up their work (or designate someone) on **Tuesday, Jan. 2:**

- 11:30 am- 1:00 pm
- 5:00 pm- 6:30pm
- Questions? Contact Lisa Sieg:  
[jshows@rockvilleartleague.com](mailto:jshows@rockvilleartleague.com)

## Rockville Art League 2017-18 Speaker Series

*All events in this series occur from 6:30-8:00 pm at Glenview Mansion 603 Edmonston Drive, Rockville MD 20851. Events are open to RAL Members and the General Public.*

February 1: **Michael Koren** - Smartphone Photography Workshop.

Charge up those smartphones and tablets – but be sure to turn the sound off - and join us for this valuable presentation.

Michael Koren is a free-lance sports and event photographer in the Baltimore Washington metro area specializing in youth sports game-time action and team portraits. Prior to this Michael worked professionally shooting model portfolios, corporate portraits, product photography for catalogs, and client advertising campaigns.

Michael's passion for photography is shared through his skill as a photography educator. He has served as President and Education Chair of the Silver Spring Camera Club in Maryland. He has led numerous seminars and workshops for the Camera Club, Ritz Camera, Calumet and the Washington School of Photography with topics ranging from beginner photography to hands on advanced level workshops and classes. Additionally, Michael teaches classes at Montgomery College on a variety of photographic topics.

As well as all of the above, he still finds time to organize a Meetup group dedicated to mobile photography; he leads the [iPhone Photography Meetup Group](#) on outings around the metro area and offers instruction on best techniques and the latest apps for the mobile camera.

Visit Michael's website to see more information.

<https://www.michaelkorenphotography.com/>

“Photography is my form of artistic expression with a stylistic focus on light, shapes and textures.”

Michael Koren, Photographic Artist



March 1, 2018  
Gonzalo Runs-Navarro: Pastel

April 5, 2018  
Gavin Glakas: Portraits in Oil



JOIN YOUR FELLOW CINEMA ADDICTS FOR THE:

**Wine & Film Series at the Glenview Mansion**

Tuesday, Jan. 16, 7:15 pm



Winner of numerous awards, *Mozart's Sister* is a re-imagined account of the early life of Maria Anna 'Nannerl' Mozart, five years older than Wolfgang and a musical prodigy in her own right. Once the feature performer, Nannerl has given way to Wolfgang as the main attraction, as their strict but loving father Leopold tours his talented offspring in front of the royal courts of pre-French Revolution Europe. Approaching marriageable age and now forbidden to play the violin or compose, Nannerl chafes at the limitations imposed on her gender. But a friendship with the son and daughter of Louis XV offers her ways to challenge the established social order. French with English subtitles.

“LIVELY and FASCINATING...A treat for classical music lovers and cinephiles alike.”

– Variety

Doors open at 6:30 pm, film starts promptly at 7:15pm. Film is free, wine at \$3/glass. Ages 21+

**Plenty of free, well-lit parking.**

Film shown in Conservatory, café style.

City of Rockville's Department of Recreation and Parks and Rockville Art League

**ANNOUNCE THE 2018 Rockville Student Art Show**

*All students (K-12) who live or attend school located within the corporate limits of the City of Rockville are eligible.*

**CALL FOR ENTRIES**

**ENTRY REQUIREMENTS**

1. Each student may submit ONE work of art.
2. All types of media are welcome.
3. Two-dimensional artwork must be mounted (glued on cardboard is fine) with wire on the back or framed with wire on the back.
4. Three-dimensional artworks must be free standing and of appropriate construction for safe public display.
5. Two registration forms must be completed. One form is to be secured to the back of the artwork for identification purposes. The second form is to be handed in during registration/delivery.
6. Artwork will not be offered for sale.

**2018 EXHIBIT CALENDAR**

**Delivery/registration** ..... Sunday, Feb. 4, 1:30-3:30 p.m.

**Opening reception** ..... Sunday, Feb. 11, 1:30-3:30 p.m.

*This event is free to all and will feature crafts, refreshments and music from Bones Jones Music school!*

**Artwork pickup** ..... Tuesday and Wednesday, Mar. 13 and 14, 2-4:30 p.m.; Thursday, Mar. 15, 4-7 p.m.

**Student Art Show Exhibit** ..... Feb. 11-Mar. 12

**FOR MORE INFORMATION**  
Send an email to Julie at [jfarrell@rockvillemd.gov](mailto:jfarrell@rockvillemd.gov) or call 240-314-8682.

**HOURS AND LOCATION**  
Glenview Mansion is located in the Rockville Civic Center Park at 603 Edmonson Dr., Rockville, MD 20851. Gallery Hours: M, T, W, F, 9 a.m.-4:30 p.m.; Thurs., 9 a.m.-8:30 p.m. The Glenview Mansion Art Gallery is closed on weekends for private events.

[www.rockvillemd.gov/glenview](http://www.rockvillemd.gov/glenview)

**Dear Members,**

Please consider volunteering for the Rockville Student Art Show! We need volunteers for the following dates/times:

Registration: Sunday, 2/4 1:30-3:30 pm  
Reception: Sunday, 2/11 1:30-3:30 pm  
Pick-Up: 3/13 and 3/14 2-4:30 pm; 3/15 4-7 pm

Please contact Emily Pearce if you are able to fill any portion of those time slots.

[volunteer@rockvilleartleague.org](mailto:volunteer@rockvilleartleague.org)

Thank you!

## Critique by Penny Kritt

### Above and Below

The stronger your powers of observation are, the more art you can create without needing a reference picture. For example, if you were told to draw or paint a person, it might seem difficult. But if you only had to draw a stick figure, that's easy! Two arms, a couple of legs, one head, maybe some eyes and a mouth. You don't have to look up any of those elements to get an accurate portrayal. It's all that pesky added detail that can trip you up.

A quick way to improve your powers of observation is to look at a single object from a variety of angles. Then quantify what is different. The best place to look is at the horizontal surfaces.

For example, if I'm sitting and you are standing nearby, you'll see the top of my head as well as the tops of my shoulders. You'll also see my lap. If you're sitting on the floor nearby, you *might* see my lap, you will see the underside of my chin, but you definitely won't see the top of my head or the top of my shoulders.

Let's see how that works on the Statue of Liberty. Take a moment to compare the two photos and note what's different. I'll give you a freebie to start you off. Figure 1 shows us the top of her head, but it's not at all visible in Figure 2. OK, now *you* try and find all the places and ways that the two photos differ.



Figure 1

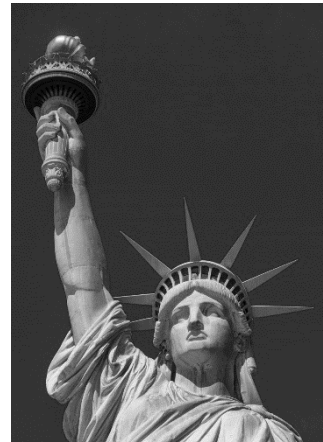


Figure 2

Here's a few more. In Figure 1, you can see down inside her sleeve but not in Figure 2. Figure 2 shows the shadows under her chin and below her nose, but they aren't visible in Figure 1 although you can see the shadow cast by her chin. And the list goes on and on.

How can you just pull this stuff from your memory? It's actually pretty easy if you think about a few simple rules.

Many items or their components can be simplified into common shapes -- a circle, a square or rectangle. Add a strong directional light source and show the highlights and shadows that move across the shape. Then the circle becomes a ball, the square a cube and the rectangle is now a tube.

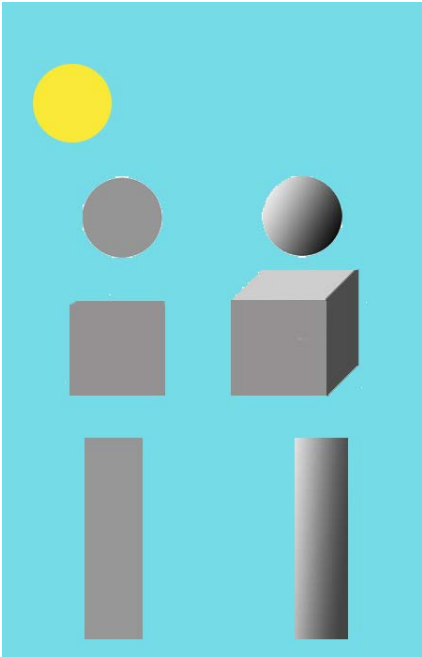


Figure 3

For example, a human head is a ball, the torso is a cube and arms and legs are now tubes as shown in Figure 4 below.

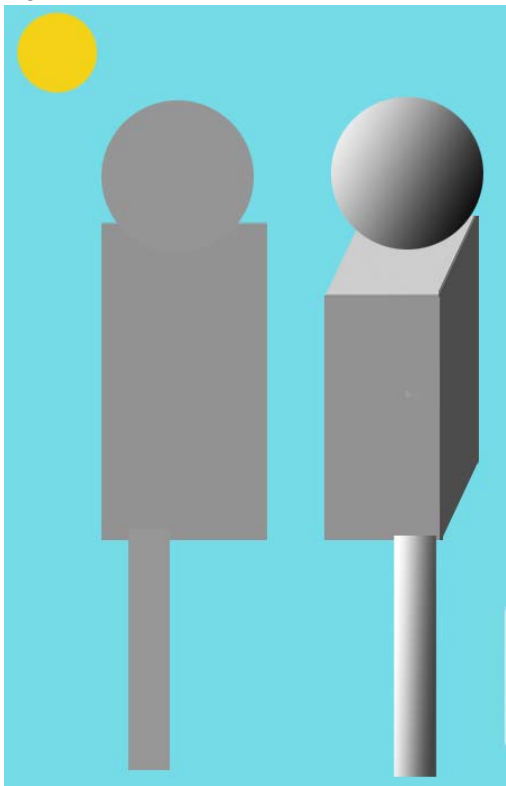


Figure 4

The beauty of this simple concept is that you can at least begin to quantify how to make anything look three dimensional. Now it's much simpler to make anything realistic, including if you're drawing it upside down and backwards! The part of the shape closest to the light source is the lightest part of the shape. As the circle becomes a ball, the highlight is on the top left and the values gradually get darker toward the bottom and far side of the ball. Squares/cubes work the same except that the value changes are now hard edges to show a complete change of direction of the form. The rectangle/tube change is also a gradual value change from light to dark as with the ball, but you usually may have to consider the left and right sides, not also the top and or bottom, depending on the viewer's position in relation to the tube.

In Figure 4 above, I actually used two rectangles, one for the torso and one for the leg. If I had used a cube for the torso, the figure would have been very short and barrel chested. From this angle, the viewer also sees the top of the cube/rectangle and in this case it forms the top of the shoulders.

Everything is dependent on where the highlights and shadows are. They can also silently tell the viewer what time of day it is, what the weather conditions are and the artist's location relative to what we see.

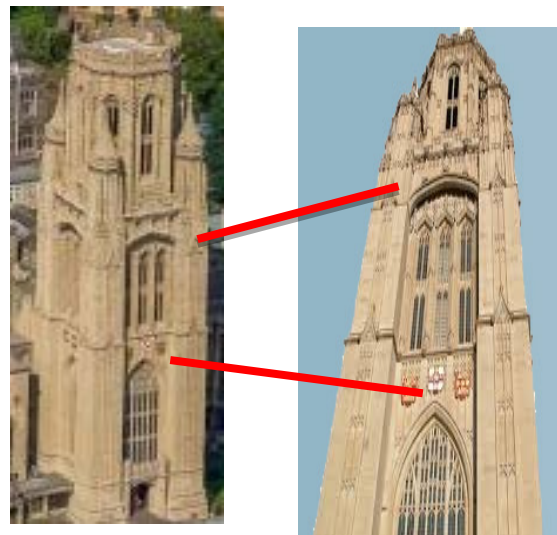


Figure 5

In Figure 5 above, you see the same building from two different angles. We can tell that the one on the right was taken from above because we can see the uppermost flat plane of the building. Another clue is that for any horizontal projections, we see the light on its top as well as the shadow it casts below. The photo on the right is from below and we only see the undersides and shadows they create, not their tops.

Now here's a brain teaser for you. Let's say you're driving down Route 40 through the Blue Ridge Mountains. Ahead of you is wide vista and you see houses that are high above on the mountains and others that are down in the valley below. Do a quick sketch where your buildings that are both higher and lower than the viewer's line of sight. How did you show "above and below"?

*If you'd like a gentle critique of your work, email me a photo at pennykritt@aol.com.*

## MEMBER NEWS



**On Exhibit Jan. 7-Feb. 2, 2018**  
Hope Chinese School - *Traditional Brush Painting*  
Meryl Silver - *Photography*  
Gloria Miotto - *Abstract Paintings*

Join us for a "Meet the Artists" and gallery opening reception on **Sunday, Jan. 7, 1:30-3:30 pm**. Performing at 2 p.m. in the Glenview Mansion Living Room is the **Beau Soir Ensemble**, a flute, viola and harp trio dedicated to the performance of a standard and contemporary repertoire that spans a variety of musical genres. Event is free.

For information, call 240-314-8682 or 240-314-8660, or visit [www.rockvillemd.gov](http://www.rockvillemd.gov). For recorded directions, call 240-314-5004. *Glenview Art Gallery is wheelchair accessible.* **New Gallery Hours:** Mon, Tues, Wed, Fri, 9 a.m.-4:30 p.m.; Thurs, 9 a.m.-9 p.m. Gallery closed on official holidays.

Glenview Mansion Art Gallery  
at Rockville Civic Center Park  
4025 Edmonstone Drive  
Rockville, MD 20851



*"Playing with the Grid"  
Composition and Linearity.  
Michael Kuchinsky*

*Rockville Arts League*

*Glenview Mansion, Rockville  
January 2018  
Reception - January 7, 1:30-3:30 pm*

## Classifieds

Please take this opportunity to advertise art supplies/easels for sale, for free, or for trade to other members. Send your information, by the 15<sup>th</sup> of each month, to:

[newsletter@rockvilleartleague.org](mailto:newsletter@rockvilleartleague.org)



## Upcoming Workshops/Demo & Critique Session at the Compass Atelier

Some of you may be interested to know about some incredible painting workshops coming to The Compass Atelier in the near future. Two nationally renowned visiting artists will be coming to our area in the near future.

DUANE KEISER will teach his popular *Premier Coup* weekend workshop on March 10-11. A *Lecture* on his work is scheduled for March 9.



TINA GARRETT will run a 3-day workshop on *Starting Methods* for painting the figure on April 27-29. Students will work from the live model with Tina guiding them through 3 different techniques to master this daunting subject.



Information on all of these and other great programming can be found at [www.TheCompassAtelier.com](http://www.TheCompassAtelier.com).

## Kritt Studio Classes

**Drawing Seascapes** classes start January 8, daytime and evening

**Painting Landscapes** classes start January 9, daytime and evening

**Painting Flowers** classes start February 13, daytime and evening

## Advanced Groups and Private Lessons

Call Penny at 301/989-1799 for more info.

**Giclée Printing and Photography**

Create Fine Art Prints of your Artwork  
on Watercolor Paper or Canvas

**A Work of Art by Debra Halprin**

.11 cents per sq. inch on paper  
.14 cents per sq. inch on canvas  
\$35 Photography Fee - Includes  
Digital Image  
Proofs and Color Enhancements

[For All Your Giclée Printing Needs  
www.Halprinart.com](http://www.Halprinart.com)  
301-910-4750  
14239 Alta Oaks Drive  
Rockville, Maryland



## Opportunities



Open Life Drawing Drop-In. 2nd and 4th Mondays of the month from 6-9pm. Artists of all levels are welcome. (No instruction.) Come draw from a professional model.

[artistsandmakersstudios.com](http://artistsandmakersstudios.com)



***GLENVIEW MANSION CONFERENCE ROOM SHOWS***

You can show your artwork in Glenview Mansion for one month if you have received a 1<sup>st</sup>, 2<sup>nd</sup>, 3<sup>rd</sup> or honorable mention award in an RAL juried show. Artists may have both rooms to exhibit in if a second artist doesn't sign up for the same month within two months of the show's start date. The receptions at Glenview mansion are 1:30-3:30 PM on the Sunday after hanging. Preferred drop off and pick up times for Glenview Shows are from 9 am to 12 noon. Drop off/pickups are Mondays (unless a holiday). If you are unavailable on the date for pickup, please arrange for someone to pick up for you. There is no room to store your artwork at the Mansion. If you are unable to drop off/pick up on the assigned dates and you can't find someone else to drop off/pick up for you, please choose a month in which you can make those dates.

For artwork delivery, please unwrap your work and take the wrappings with you. Please bring pliers (needle nose are easy to work with). You may use the hand truck that is at the Mansion to move your artwork from your vehicle. There is no staff at the mansion available to help you move your artwork into the conference rooms. You are responsible for hanging your own artwork, with help from the Mansion staff. If you don't have labels for your work, please fill out the RAL cards that will be available. If you print your own, print them on card stock. Do not use the sticky Avery labels, unless you adhere them to foam core or card stock. **Contact Diane Jeang, Glenview Member Show Coordinator, (301) 871-1589 or swinedoc@yahoo.com with questions.** If you need to contact Julie Farrell, please send an email tojfarrell@rockvillemd.gov.

Monday delivery and hanging: 12PM–2PM & 5-7PM/ Sunday Gallery Opening: 1:30—3:30PM  
 Monday Pick up: before 11AM

<b>Glenview Mansion Schedule</b>				
<b>2017</b>				
	<b>Member(s)</b>	Mon &/or Tues Deliver 12-2&5-7	Sunday Gallery Opening 1:30-3:30	Monday Pick-up Before 11 am
<b>DEC</b>	<b>RAL Winter Show</b>	Nov. 27	Dec. 3	Jan. 2
<b>2018</b>				
	<b>Member(s)</b>	Drop-Off	Sunday Gallery Opening 1:30-3:30	Pick-up
<b>JAN/FEB</b>	<b>Mike Kuchinsky/Diane Jeang</b>	Jan. 2 12 – 4:30 pm	Jan. 7	Fri. Feb. 2 9-11 am
<b>FEB/MAR</b>	<b>Student Art Show</b>	Sun. Feb. 4	Feb. 11	Mar. 13 – Mar. 15
<b>MAR/APR</b>	<b>Sabiha Iqbal (2)</b>	Mon. Mar. 19	Mar. 25	Mon. Apr30 9-11 am
<b>MAY/JUNE</b>	<b>RAL Spring Show</b>	Mon. Apr. 30 12-2 pm, 5-7 pm	May 6	Mon. June 18 12-2 pm, 5-7 pm
<b>JUNE/JULY</b>	<b>Harriet Gordon/Norda Kittrie</b>	Mon June 18 9-11 am	June 24	Mon. July 30 9-11 am
<b>AUG/SEPT</b>	<b>Board Member's Show</b>	Mon. July 30 12 – 4:30 pm	Aug. 5	Mon. Sept. 10 9-11 am
<b>SEPT/OCT</b>	<b>Closed</b>	-	-	-

**Rockville Art League Newsletter January 2018**

<b>OCT/NOV</b>	<b>Closed</b>	-	-	-
<b>DEC</b>	<b>Closed</b>	-	-	-
<b>2019</b>				
	<b>Member(s)</b>	Mon &/or Tues Deliver 12-2&5-7	Sunday Gallery Opening 1:30-3:30	Monday Pick-up Before 11 am
<b>JAN/FEB</b>	<b>Closed</b>	-	-	-
<b>FEB/MAR</b>	<b>Student Art Show</b>			
<b>MAR/APR</b>	<b>Joanie Grosfield/ Teresa Hull</b>			
<b>MAY/JUNE</b>	<b>RAL Spring Show</b>			
<b>JUNE/JULY</b>				
<b>AUG/SEPT</b>	<b>Board Member's Show</b>			
<b>SEPT/OCT</b>	<b>Nighat Ahmed</b>			
<b>OCT/NOV</b>	<b>Cathy McDermott/ Susan Dunnell</b>			
<b>DEC</b>	<b>RAL Winter Show</b>			

For additional information for members hanging in the conference rooms, please refer to the RAL web page: <http://www.rockvilleartleague.org/glenview.pdf>

At least one platter of finger foods (cookies, crackers/cheese, veggies/dip) should be supplied by the RAL artist on the day of the opening reception. Cups/napkins/water are provided by the City of Rockville for opening receptions. The Mansion will be open at 1 pm for the artist on the day of the opening reception.

**RAL ONGOING SHOW LIST**

**Twinbrook Library - 202 Meadow Hall Drive, Rockville, Maryland**

<b><u>Name</u></b>	<b><u>From</u></b>	<b><u>To</u></b>
open	Dec. 1, 2017	Jan. 1, 2018
open	Jan. 1, 2018	Feb. 1, 2018
Nighat Ahmed	Feb. 1, 2018	Mar. 1, 2018

**Thomas Farm Community Center – 700 Falls Grove Drive, Rockville, Maryland**

12-16 medium to large paintings, Contact person: Martha Coester (240) 314-8842

<b><u>Name</u></b>	<b><u>From</u></b>	<b><u>To</u></b>
Lieta Gerson	Oct. 15, 2017	Jan. 15, 2018
Sharill Dittmann (non-RAL)	Jan. 15, 2018	Apr. 15, 2018
Lieta Gerson	Apr. 15, 2018	July 15, 2018

**Marilyn J. Praisner Library – 14910 Old Columbia Road, Burtonsville, Maryland**

10 small to medium or 5-6 large paintings (10 hanging chains), Contact person: (240) 773-9455 Vera Ramaty

<b><u>Name</u></b>	<b><u>From</u></b>	<b><u>To</u></b>
open	Oct. 15, 2017	Dec. 15, 2017
open	Dec. 15, 2017	Feb. 15, 2018
open	Feb. 15, 2017	Apr. 15, 2018





**RAL BOARD OF DIRECTORS**

<b>Name</b>	<b>Position</b>	<b>E-mail</b>
Patrick Sieg	<i>President</i>	<a href="mailto:president@rockvilleartleague.org">president@rockvilleartleague.org</a>
Lisa Sieg	<i>1<sup>st</sup> Vice President</i>	<a href="mailto:jshows@rockvilleartleague.org">jshows@rockvilleartleague.org</a>
Carlos Garcia	<i>2<sup>nd</sup> Vice President</i>	<a href="mailto:oshows@rockvilleartleague.org">oshows@rockvilleartleague.org</a>
Nighat Ahmed	<i>Program Coordinator</i>	<a href="mailto:programs@rockvilleartleague.org">programs@rockvilleartleague.org</a>
Emily Pearce	<i>Volunteer Coordinator</i>	<a href="mailto:volunteer@rockvilleartleague.org">volunteer@rockvilleartleague.org</a>
Emily Pearce	<i>Membership</i>	<a href="mailto:membership@rockvilleartleague.org">membership@rockvilleartleague.org</a>
Rob Gale	<i>Treasurer</i>	<a href="mailto:treasurer@rockvilleartleague.org">treasurer@rockvilleartleague.org</a>
Cathy McDermott	<i>Secretary</i>	<a href="mailto:secretary@rockvilleartleague.org">secretary@rockvilleartleague.org</a>
Susan Dunnell	<i>Newsletter Editor</i>	<a href="mailto:newsletter@rockvilleartleague.org">newsletter@rockvilleartleague.org</a>
Liliane Blom	<i>Liaison Officer</i>	<a href="mailto:liaison@rockvilleartleague.org">liaison@rockvilleartleague.org</a>
Sabiha Iqbal	<i>Publicity/marketing</i>	<a href="mailto:publicity@rockvilleartleague.org">publicity@rockvilleartleague.org</a>
Eric Goss	<i>Communications</i>	<a href="mailto:communications@rockvilleartleague.org">communications@rockvilleartleague.org</a>
Lisa Sieg	<i>Hospitality</i>	<a href="mailto:hospitality@rockvilleartleague.org">hospitality@rockvilleartleague.org</a>
Diane Jeang	<i>Monthly Member Shows</i>	<a href="mailto:mshows@rockvilleartleague.org">mshows@rockvilleartleague.org</a>
Patria Baranski	<i>Historian</i>	<a href="mailto:historian@rockvilleartleague.org">historian@rockvilleartleague.org</a>
Michael Auger	<i>Webmaster</i>	<a href="mailto:webmaster@rockvilleartleague.org">webmaster@rockvilleartleague.org</a>
Eileen Mader	<i>Founder</i>	

Rockville Art League  
P.O. Box 4026  
Rockville, MD 20850