



RockvilleArtLeague.org

Vol. XXVII No. 4

December 2017

**NEXT MEETING: December 7, 6:30PM  
Judge's Walk-through of RAL December Show**

**Message from the President,  
Patrick Sieg**

Dear Rockville Art League Members,

Thank you for your support.

In November we had a record turnout for Glenn Kessler's effective marketing for artists presentation. Special thanks to Nihat Ahmed for arranging our speakers this fall and she has a terrific group on deck for the winter and spring.



Nihat joined the RAL Board of Directors as Program Coordinator last spring because our group was important to her and she wanted to help us move forward. We can all agree that

Nihat and the presentations she has arranged have really have made a difference.

There will be several board positions opening up in the spring. If being a member of RAL and supporting art in our community is important to you, then please consider joining our board. There will be more details on open positions in the early spring. Plus being a board member is fun.

Our next meeting will be on December 7 in the upstairs gallery at Glenview Mansion. This will be our December Members' Show walk through with judge Lorena Bradford.

I am really excited about our December show. Lisa Sieg has been finalizing her process to stage the show. There are plenty of logistical details to address, not to mention organizational acumen, and for our members it begins with your artwork drop off on November 27. Please see show details and dates later in this newsletter. Note that volunteer opportunities still exist.

Entering our members' show is a great way to showcase your work and talent, and another way to show your support for RAL.

Please be sure to invite your family, friends and neighbors to see our show. The opening reception is on Sunday, December 3, from 1:00 to 4:00 PM.

The holiday season is here and this is a time to review our achievements this year. Please join me in being thankful for family and friends, for the challenges that have been resolved, for new things learned, for joy that is part of life and for the beauty and accomplishment that art brings to us as artists and people.

I look forward to seeing you and your artwork later this month.

Sincerely,  
Patrick Sieg

### **December's Speaker: Dr. Lorena Bradford**

Dr. Lorena Bradford will conduct a gallery walk-through on Thursday, December 7 at 6:30 PM.

#### **RENEW YOUR RAL MEMBERSHIP!**

Membership is now **\$40**. Renew at the show or through the RAL website with Paypal.



### **RAL Juried Members' December Show**

#### **GLENVIEW MANSION DECEMBER 3 - 29, 2017**

**Judge:** Lorena Bradford has a Master's and doctoral degrees in art history from the University of Delaware, with an emphasis on seventeenth-century Dutch art and the history of prints. Her dissertation focused on the life and work of the seventeenth-century Flemish Nicolaes de Bruyn (1571-1656), who was notable for his large-scale, painting sized landscape engravings. The fully illustrated, two-volume *Nicolaes de Bruyn: The New Hollstein Dutch & Flemish etchings, engravings and woodcuts* appeared in 2014 (published as Lorena Baines). She has worked in the Education Division of the National Gallery of Art since 2008, first as a museum educator for High School Programs and more recently as the Gallery's first Head of Accessible Programs. In the latter position, she creates and runs programs for visitors with disabilities, including those with low vision, those with hearing loss, visitors with memory loss and

their care partners, and medical students and professionals. She is the Editor-in-Chief of and contributing author to the biannual *On Paper: Journal of the Washington Print Club*. She collects paintings and prints on a casual and variable basis.

Dr. Lorena Bradford will conduct a gallery walk-through on Thursday, December 7 at 6:30 PM. Light refreshments served at 6:15.

**Eligibility and rules:** The following rules apply for all works entered. Each member in good standing may enter two works. The maximum length of any framed side is 60 inches. Only **original** works securely framed with hanging wire are acceptable. The entries must have been completed within the last two years and may not have been exhibited previously in a RAL Member Show. No reproductions, no giclées and no wet canvases are allowed. A work having multiple framed parts must meet the two works per member criteria. Entries not meeting the show conditions will not be accepted. RAL retains the right to determine suitability of work for entry in this show. The artist's signature on the Show Agreement also constitutes a commitment to donate 20% of the sale price to the City of Rockville for works sold during the show.

**Categories:**

- Oils and acrylics
- Watercolors
- Pastels, drawings, and hand pulled prints
- Mixed media, collage, experimental, and original computer-generated art
- Photographs
- Sculpture and ceramics

**Awards:**

- Best in Show (cash prize)
- First, Second and Third in all categories (cash prizes)
- Honorable Mention at the judge's discretion

**Delivery:** Monday, Nov. 27, 11:30 AM-1:30 PM and 5:00 -7:00 PM register and deliver your work to the second floor Glenview Mansion Art Gallery, Rockville Civic Center, 603 Edmonston Dr., Rockville. On Tuesday, Nov. 28, please phone the pickup hotline after 3 PM, **240-314-8682**, to see if your work was juried into the show. If your number is listed, then you or your designee must pick up your work on Tuesday, Nov. 28 3:30-5:00 PM or Wednesday, Nov.29, 11:30 AM -1:00 PM.

**Reception:** Sunday, Dec. 3, from 1:00-4:00 PM. Presentation of awards at 2 PM. Light refreshments. **Gallery Walk Through with Judge:** Thursday, Dec. 7 at 6:15PM. Light refreshments. (Note: this is instead of the Dec. meeting.)

**Final Pick Up:** Tuesday, Jan. 2, 11:30 AM – 1 PM and 5:00-6.30 PM. Your work must be picked up. Please have your designee pick up your work if necessary. Any work left after Tuesday 6:30 PM will not be insured. There is no storage available.

**Sales:** The Glenview Mansion staff will manage art sales. The artist's signature on the Show Agreement also constitutes a commitment to donate 20% of the sale price to the City of Rockville for works sold during the show.

**We need volunteers** to help register, move, hang, label and release entries. Please check your schedules and sign up online on Sign-up Genius.

[www.SignUpGenius.com/go/4090C49A5AC23ABFD0-raljuried](http://www.SignUpGenius.com/go/4090C49A5AC23ABFD0-raljuried)

*It takes a village* and we hope you'll be part of ours! (The \$5 entry fee will be waived if you volunteer for the show.)

Monday, Nov. 27 – Delivery of work and Registration:

- 11:30 AM -1:30 PM
- 5:00-7:00 PM

Tuesday, Nov. 28 – Pick up of unaccepted works:

- 3:30-5:00PM

Wednesday, Nov. 29 –

- Pick-up of unaccepted work: 11:30-1:00 PM
- Hanging/Labeling:
  - 9:30 AM-12 Noon
  - 1:00-4:00 PM

Thursday, Nov. 30 – Final details and tagging

- 9:30-11:30 am

Sunday, Dec. 3 - Reception set up, oversee the tables, and clean up:

- 1:00 -4:00 PM

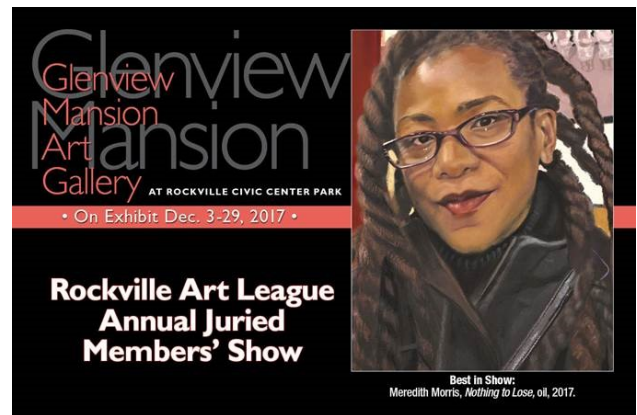
Tuesday, Jan. 2, 2018 - Final Pick-up:

- 11:30 AM-1:00 PM
- 5:00-6:30 PM



When signing up, please indicate the time you can help. Can't stay the whole time? Any amount of time you can work is appreciated. All slots filled and you want to volunteer or need help signing up? Please contact Lisa Sieg. (If hanging, please bring a pair of needle nose pliers and gloves.) We need you to help make the Members' Show a successful one. Please check your calendar and sign up!

Questions regarding the show? Please contact:  
Lisa Sieg: [jshows@rockvilleartleague.org](mailto:jshows@rockvilleartleague.org)  
Patrick Sieg: [president@rockvilleartleague.org](mailto:president@rockvilleartleague.org)



On Exhibit Dec. 3-29, 2017  
**Rockville Art League**  
**Annual Juried Members' Show**  
*Varied Media*

Join us for a "Meet the Artists" and gallery opening reception on **Sunday, Dec. 3, 1-4 p.m.** There will be holiday music all afternoon starting with the **Rockville Singers** at 1:15 p.m. Event is free.

For information, call 240-314-8682 or 240-314-8660, or visit [www.rockvillemd.gov](http://www.rockvillemd.gov). For recorded directions, call 240-314-5004. *Glenview Art Gallery is wheelchair accessible.*  
**New Gallery Hours:** Mon., Tues, Wed., Fri., 9 a.m.-4:30 p.m.; Thurs, 9 a.m.-9 p.m. Gallery closed on official holidays.

**Glenview Mansion Art Gallery**  
at Rockville Civic Center Park  
603 Edmonston Drive  
Rockville, MD 20851

## 2017 Holiday Open House & Gift Shopping Event at Glenview Mansion

Meet local artists and shop for unique, one-of-a-kind gifts for the holidays!

Sunday, December 3, from 1:00 to 4:00PM.  
603 Edmonston Drive, Rockville, MD 20851



## Rockville Art League 2017-18 Speaker Series

*All events in this series occur from 6:30-8:00 pm at Glenview Mansion 603 Edmonston Drive, Rockville MD 20851. Events are open to RAL Members and the General Public.*

December 7, 2017  
Judge's Walk-through of RAL Juried Show

February 1: **Michael Koren** - Smartphone Photography Workshop.

Charge up those smartphones and tablets – but be sure to turn the sound off - and join us for this valuable presentation.

Michael Koren is a free-lance sports and event photographer in the Baltimore Washington metro area specializing in youth sports game-time action and team portraits. Prior to this Michael worked professionally shooting model portfolios, corporate portraits, product photography for catalogs, and client advertising campaigns.

Michael's passion for photography is shared through his skill as a photography educator. He has served as President and Education Chair of the Silver Spring Camera Club in Maryland. He has led numerous seminars and workshops for the Camera Club, Ritz Camera, Calumet and the Washington School of Photography with topics ranging from beginner photography to hands on advanced level workshops and classes. Additionally, Michael teaches classes at Montgomery College on a variety of photographic topics.

As well as all of the above, he still finds time to organize a Meetup group dedicated to mobile photography; he leads the [iPhone Photography Meetup Group](https://www.meetup.com/iphone-photography/) on outings around the metro area and offers instruction on best techniques and the latest apps for the mobile camera.

Visit Michael's website to see more information.

<https://www.michaelkorenphotography.com/>

“Photography is my form of artistic expression with a stylistic focus on light, shapes and textures.”

Michael Koren, Photographic Artist



March 1, 2018  
Gonzalo Runs-Navarro: Pastel

April 5, 2018  
Gavin Glakas: Portraits in Oil



### **Holiday Concert at the F. Scott Fitzgerald Theatre**

*Sit back, relax and let the music of the season  
wash over you!*

Sunday, December 17, 7:30 p.m.  
**45<sup>th</sup> Annual Holiday Concert**  
Performed by the Rockville Chorus

F. Scott Fitzgerald Theatre  
603 Edmonston Drive, Rockville, MD 20851

**Free!**

Join us in the lobby for refreshments after the  
show.



## **Critique by Penny Kritt**

### **Fabric Art**

If you just can't bear to start another painting because it will just sit in that growing stack waiting for a frame, it's time to try something totally different!

If you've always been a "crafty" person, your artistic talents have already found homes on things other than a piece of paper or a canvas. Especially at this time of year, maybe you've already made a wreath or two and ornaments for the holiday tree. Thus, you already know that genuinely satisfying artwork doesn't have to be in a frame and hang on the wall all year round.

A quick trip to craft stores like AC Moore or Michaels will yield a bounty of inexpensive wearable "blank" items for yourself, friends, family and maybe even your "fur children". Tee shirts, sweatshirts and bandanas are available in all sizes, shapes and colors. Be sure to choose paints, markers and other decorations that are made for fabric so the garment can be washed. Get some fabric glitter or puffy paint that will make wonderful raised textures.

Everyone likes something warm to wear in the wintertime, but while teens may like sweatshirts, Granny will prefer a cardigan because it's easier to put on. Fido and Romeow might like small bandanas to wear for holiday festivities, but Aunt Helen wears long rectangular scarves.

Now that you've chosen your "canvas," let's zero in on your design. If you're just going to add glitter and gems, any colors will do just fine. When working on dark fabrics, however, make sure you buy paints and markers that are opaque so they cover what's underneath.

These are so much fun and even inexpensive! But, as always, we come back to that pesky topic of composition. Aughhhhhhh!

So, whether you've decided to whip up a few last minute holiday gifts or you just want to experiment, take a few minutes to think about who will use the product and when they might wear it.

As I prepared for the holidays, I decided to work with a "winter" theme that wasn't so limited in when it would likely be worn. Snowflake patterns are widely available if you need them -- use a variety of shapes for a more artistic presentation. Note that the flakes aren't all white -- light blue, teal and gold all stand out well on a dark navy background. And when this large scarf is folded, it's just a nice navy and white, so it's really good for all year round.



**And the Snow Fell Softly/Modal Scarf** by Penny Krit

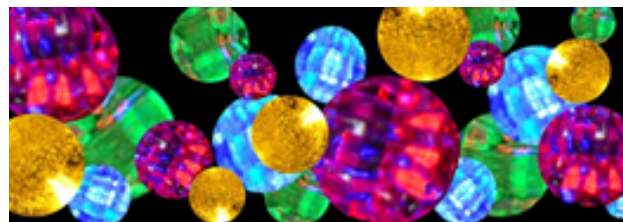
Here's another version of this theme. Many of my friends are musicians, and they will wear this design all winter long. The classic song Winter Wonderland by Felix Bernard and Richard Smith perfectly describes the joys of the coldest months. This scarf is actually 80 x 28 inches so I had a lot of room to work. The score and lyrics take up most of the design with a few red and gold jingle bells to give it some color. At either end, I changed the orientation from landscape to portrait, so when the scarf hangs down around the neck, the happy snow family and stacks of LET IT SNOW on their own sled are properly positioned.



**Let It Snow/Modal Scarf** by Penny Krit

When using any works by others, be sure to check for copyright infringement. Using a few words and/or notes of a composition won't be a problem, but, especially if you plan to use your design on items for sale, be sure to do your research before going into production.

With *Party Lights* below, I used the traditional colors of red, green and gold for orbs, but without a Christmas tree in the design, now the scarf is appropriate for use the entire year.



**Party Lights/Modal Scarf** by Penny Krit

As you saw above, you can get a great look with a few colorful shapes. If you're a more advanced artist, designs are only limited by your imagination!

***If you'd like a gentle critique of your work, email me a photo at pennykritt@aol.com.***

## MEMBER NEWS



RAL member **Patricia Zannie** has been selected as one of 52 Artists to be featured in an internet blog entitled “Artists Tell Their Stories.” Patricia covers the Modern Master Artists that influence her work such as Cezanne, Matisse & Rauschenberg, as well the Zen Design concepts she utilizes in her “fauvist” landscapes. Her collages contain bold colors and multiple patterns, utilizing papers from around the world and patterns from many indigenous people. She uses inks, oil pastels and crayons to layer on top of the papers, as well as fiber objects to enrich surface textures and provide the illusion of space in her collages. Featured September 20th to 27th - her article will remain posted throughout the year.

Here’s the link:

<https://artiststelltheirstories.blogspot.com/2017/09/patricia-zannie-collage-artist-tells.html>

Patricia is a local award winning collage artist, and former instructor at Montgomery College for 17 yrs. and is a firm believer that creativity is intuitive and innate in all of us. She is available to conduct hands-on workshops on “Exploring the Creative Process thru Collage,”

so that artists can expand their own artistic expression as well as learn new skills, techniques and materials and put a spark in their creative spirit and processes. Her website is [www.patzannie.com](http://www.patzannie.com) and her email address is [collagesbypatricia@yahoo.com](mailto:collagesbypatricia@yahoo.com).

Beginning soon after the New Year, 2018, her artwork can be seen at the new Gallery 209, in Rockville, MD.







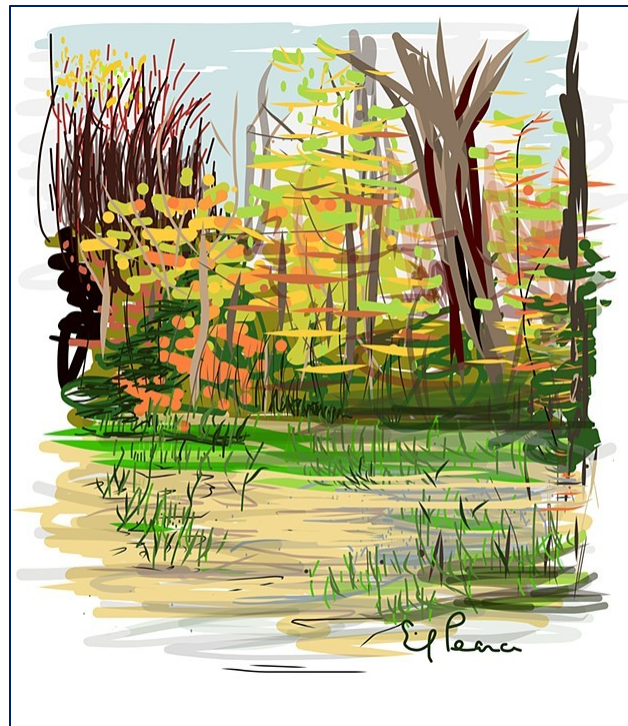
**Maurice Margulie's** painting, "Portrait of the Artist," has been accepted to Maryland Federation of Art "Strokes of Genius Exhibit" October 27 to November 25. The exhibit is at Circle Gallery, 18 State Circle, Annapolis, MD.

### **Classifieds**

Please take this opportunity to advertise art supplies/easels for sale, for free, or for trade to other members. Send your information, by the 15<sup>th</sup> of each month, to:

[newsletter@rockvilleartleague.org](mailto:newsletter@rockvilleartleague.org)

**Emily Pearce** has an exhibit of nature-related pieces at Brookside Gardens through December 10 at the Visitor's Center at 1800 Glenallen Avenue, Wheaton, MD.



### **Upcoming Workshops/Demo & Critique Session at the Compass Atelier**

Some of you may be interested to know about some incredible painting workshops coming to The Compass Atelier in the near future. Three nationally renowned visiting artists will be coming to our area in the near future.

**DUANE KEISER** will teach a new weekend workshop entitled *Long Looking* on the topic of working on long-term paintings. The workshop will first meet Dec 2-3, then reconvene on March 18 to examine progress on those sustained paintings. Duane will also teach his popular *Premier Coup* weekend workshop on March 10-11. A *Lecture* on his work is scheduled for March 9.



TINA GARRETT will run a 3-day workshop on *Starting Methods* for painting the figure on April 27-29. Students will work from the live model with Tina guiding them through 3 different techniques to master this daunting subject.



Information on all of these and other great programming can be found at [www.TheCompassAtelier.com](http://www.TheCompassAtelier.com).

### Kritt Studio Classes

**Drawing Seascapes** classes start January 8, daytime and evening

**Painting Landscapes** classes start January 9, daytime and evening

**Painting Flowers** classes start February 13, daytime and evening

### **Advanced Groups and Private Lessons**

Call Penny at 301/989-1799 for more info.

**Giclée Printing and Photography**  
Create Fine Art Prints of your Artwork on Watercolor Paper or Canvas  
**A Work of Art by Debra Halprin**



.11 cents per sq. inch on paper  
.14 cents per sq. inch on canvas  
\$35 Photography Fee - Includes Digital Image  
Proofs and Color Enhancements

[For All Your Giclée Printing Needs](http://www.Halprinart.com)  
[www.Halprinart.com](http://www.Halprinart.com)  
301-910-4750  
14239 Alta Oaks Drive  
Rockville, Maryland

### Opportunities



Open Life Drawing Drop-In. 2nd and 4th Mondays of the month from 6-9pm. Artists of all levels are welcome. (No instruction.) Come draw from a professional model.

[artistsandmakersstudios.com](http://artistsandmakersstudios.com)

**GLENVIEW MANSION CONFERENCE ROOM SHOWS**

You can show your artwork in Glenview Mansion for one month if you have received a 1<sup>st</sup>, 2<sup>nd</sup>, 3<sup>rd</sup> or honorable mention award in an RAL juried show. Artists may have both rooms to exhibit in if a second artist doesn't sign up for the same month within two months of the show's start date. The receptions at Glenview mansion are 1:30-3:30 PM on the Sunday after hanging. Preferred drop off and pick up times for Glenview Shows are from 9 am to 12 noon. Drop off/pickups are Mondays (unless a holiday). If you are unavailable on the date for pickup, please arrange for someone to pick up for you. There is no room to store your artwork at the Mansion. If you are unable to drop off/pick up on the assigned dates and you can't find someone else to drop off/pick up for you, please choose a month in which you can make those dates.

For artwork delivery, please unwrap your work and take the wrappings with you. Please bring pliers (needle nose are easy to work with). You may use the hand truck that is at the Mansion to move your artwork from your vehicle. There is no staff at the mansion available to help you move your artwork into the conference rooms. You are responsible for hanging your own artwork, with help from the Mansion staff. If you don't have labels for your work, please fill out the RAL cards that will be available. If you print your own, print them on card stock. Do not use the sticky Avery labels, unless you adhere them to foam core or card stock. **Contact Diane Jeang, Glenview Member Show Coordinator, (301) 871-1589 or swinedoc@yahoo.com with questions.** If you need to contact Julie Farrell, please send an email tojfarrell@rockvillemd.gov.

Monday delivery and hanging: 12PM–2PM & 5-7PM/ Sunday Gallery Opening: 1:30—3:30PM  
Monday Pick up: before 11AM

<b>Glenview Mansion Schedule</b>				
<b>2017</b>	<b>Member(s)</b>	<b>Mon &amp;/or Tues Deliver 12-2&amp;5-7</b>	<b>Sunday Gallery Opening 1:30 – 3:30 pm</b>	<b>Pick-up Before 11 am</b>
<b>DEC</b>	<b>RAL Winter Show</b>	Nov. 27	Dec. 3	Jan. 2
<b>2018</b>				
<b>JAN/FEB</b>	<b>Mike Kuchinsky/ Diane Jeang</b>	Jan 2. 12 – 4:30PM	Jan. 7	Fri. Feb. 2 9-11 am
<b>FEB/MAR</b>	<b>Student Art Show</b>	Sun., Feb. 4	Feb. 11	March 13-15
<b>MAR/APR</b>	<b>Sabiha Iqbal (2)</b>	Mon. Mar. 19	Mar. 25	Mon. Apr. 30 9-11 am
<b>MAY/JUN</b>	<b>RAL Spring Show</b>	Mon., Apr. 30 12-2 pm, 5-7pm	May 6	Mon., June 18 12-2pm, 5-7pm
<b>JUN/JUL</b>	<b>Harriet Gordon/Norda Kittrie</b>	Mon., Jun 18 9-11am	June 24	Mon., July 30 9-11am
<b>AUG/SEPT</b>	<b>Board Members' Show</b>	Mon., July 30 12-4:30pm	Aug. 5	Mon., Sept. 10 9-11am
<b>SEPT/OCT</b>	<b>Cathy McDermott/ Susan Dunnell</b>	Sept. 10 12-4:30pm	Sept. 16	Mon., Oct. 15 9-11am
<b>OCT/NOV</b>	<b>Sue Moses/Stephanie Gustavson</b>	Oct. 15 12-4:30pm	Oct. 21	Mon., Nov. 26

**Rockville Art League Newsletter December 2017**

				9-11am
<b>DEC</b>	<b>RAL Winter Show</b>	Mon., Nov. 26 12-2pm, 5-7pm	Dec. 2	Mon., Jan. 7 12-2pm, 5-7pm
<b>2018</b>				
<b>JAN/FEB</b>				
<b>FEB/MAR</b>	<b>Student Art Show</b>			
<b>MAR/APR</b>	<b>Joanie Grosfield</b>			
<b>MAY/JUNE</b>	<b>RAL Spring Show</b>			
<b>JUN/JULY</b>				
<b>AUG/SEPT</b>	<b>Board Members' Show</b>			
<b>SEPT/OCT</b>				
<b>OCT/NOV</b>				
<b>DEC</b>	<b>RAL Winter Show</b>			

For additional information for members hanging in the conference rooms, please refer to the RAL web page: <http://www.rockvilleartleague.org/glenview.pdf>

At least one platter of finger foods (cookies, crackers/cheese, veggies/dip) should be supplied by the RAL artist on the day of the opening reception. Cups/napkins/water are provided by the City of Rockville for opening receptions. The Mansion will be open at 1 pm for the artist on the day of the opening reception.

*Glenview/Open Show Coordinator:* Diane Jeang, (301) 871-1589 E-mail: [swinedoc@yahoo.com](mailto:swinedoc@yahoo.com)

***RAL ONGOING SHOW LIST***

<b>Twinbrook Library – 202 Meadow Hall Drive, Rockville, Maryland</b>		
Shows are now 1 month in length. 5 medium to large paintings, Contact person: Chris Lindy (240)-777-0240, <a href="mailto:christinelundy@montgomerycountymd.gov">christinelundy@montgomerycountymd.gov</a>		
<b>Name</b>	<b>From</b>	<b>To</b>
Open	Nov. 1, 2017	Jan. 1, 2018
<b>Thomas Farm Community Center – 700 Fallsgrove Drive, Rockville, Maryland</b>		
12-16 medium to large paintings, Contact person: Martha Coester (240) 314-8842		
<b>Name</b>	<b>From</b>	<b>To</b>
Lieta Gerson	Oct. 15, 2017	Jan. 15, 2018
Sharill Dittmann (non-RAL)	Jan. 15, 2018	Apr. 15, 2018
<b>Marilyn J. Praisner Library – 14910 Old Columbia Road, Burtonsville, Maryland</b>		
10 small to medium or 5-6 large paintings (10 hanging chains), Contact person: (240) 773-9455, Vera Ramaty.		
<b>Name</b>	<b>From</b>	<b>To</b>
Open	Oct. 15, 2017	Feb. 15, 2018



### RAL BOARD OF DIRECTORS

<b>Name</b>	<b>Position</b>	<b>E-mail</b>
Patrick Sieg	<i>President</i>	<a href="mailto:president@rockvilleartleague.org">president@rockvilleartleague.org</a>
Lisa Sieg	<i>1<sup>st</sup> Vice President</i>	<a href="mailto:jshows@rockvilleartleague.org">jshows@rockvilleartleague.org</a>
Carlos Garcia	<i>2<sup>nd</sup> Vice President</i>	<a href="mailto:oshows@rockvilleartleague.org">oshows@rockvilleartleague.org</a>
Nighat Ahmed	<i>Program Coordinator</i>	<a href="mailto:programs@rockvilleartleague.org">programs@rockvilleartleague.org</a>
Emily Pearce	<i>Volunteer Coordinator</i>	<a href="mailto:volunteer@rockvilleartleague.org">volunteer@rockvilleartleague.org</a>
Emily Pearce	<i>Membership</i>	<a href="mailto:membership@rockvilleartleague.org">membership@rockvilleartleague.org</a>
Rob Gale	<i>Treasurer</i>	<a href="mailto:treasurer@rockvilleartleague.org">treasurer@rockvilleartleague.org</a>
Cathy McDermott	<i>Secretary</i>	<a href="mailto:secretary@rockvilleartleague.org">secretary@rockvilleartleague.org</a>
Susan Dunnell	<i>Newsletter Editor</i>	<a href="mailto:newsletter@rockvilleartleague.org">newsletter@rockvilleartleague.org</a>
Liliane Blom	<i>Liaison Officer</i>	<a href="mailto:liaison@rockvilleartleague.org">liaison@rockvilleartleague.org</a>
Sabiha Iqbal	<i>Publicity/marketing</i>	<a href="mailto:publicity@rockvilleartleague.org">publicity@rockvilleartleague.org</a>
Eric Goss	<i>Communications</i>	<a href="mailto:communications@rockvilleartleague.org">communications@rockvilleartleague.org</a>
Lisa Sieg	<i>Hospitality</i>	<a href="mailto:hospitality@rockvilleartleague.org">hospitality@rockvilleartleague.org</a>
		<a href="mailto:jshows@rockvilleartleague.org">jshows@rockvilleartleague.org</a>
Diane Jeang	<i>Monthly Member Shows</i>	<a href="mailto:mshows@rockvilleartleague.org">mshows@rockvilleartleague.org</a>
		<a href="mailto:oshows@rockvilleartleague.org">oshows@rockvilleartleague.org</a>
Patria Baranski	<i>Historian</i>	<a href="mailto:historian@rockvilleartleague.org">historian@rockvilleartleague.org</a>
Michael Auger	<i>Webmaster</i>	<a href="mailto:webmaster@rockvilleartleague.org">webmaster@rockvilleartleague.org</a>
Eileen Mader	<i>Founder</i>	

Rockville Art League  
P.O. Box 4026  
Rockville, MD 20850

# 2017 RAL Members Show Agreement

I agree to the rules of the show as presented in this announcement, that my entries are my original works, and that I will not hold RAL or The Glenview Mansion or City of Rockville responsible for any possible loss or damage to my entries while on the property. I understand that all reasonable care will be taken in handling entries. I give RAL permission to photograph my artworks and publish them as appropriate.

**Please print legibly so the information is easily and accurately read. Thanks!**

Printed Name \_\_\_\_\_ Date \_\_\_\_\_

Signature \_\_\_\_\_ Phone \_\_\_\_\_

Address \_\_\_\_\_

E-Mail \_\_\_\_\_

**I am entering the following work(s):**

**Work 1:**  
Title \_\_\_\_\_

Medium \_\_\_\_\_ Price \$ \_\_\_\_\_

**Work 2:**  
Title \_\_\_\_\_

Medium \_\_\_\_\_ Price \$ \_\_\_\_\_

# CALENDAR

**Show:** REF# \_\_\_\_\_  
December 3- 29, 2017

**Delivery of works:**  
Monday, Nov. 27, 11:30AM – 1:30PM and 5:00-7:00PM

**Hotline for pickup list:**  
Tuesday, Nov. 28 after 3:00PM  
**240-314-8682**

**Pickup of unaccepted works:**  
Tuesday, Nov. 28, 3:30-5:00PM  
Wednesday, Nov. 29, 11:30AM-1:00PM

**Opening Reception:**  
Sunday, Dec. 3, 1:00 - 4:00 PM  
**Awards: 2:00PM**

**Judge's Gallery Walk Through**  
Thursday, Dec. 7, 6:15PM

**Final Pickup:**  
**Tuesday, Jan. 2,** 11:30AM-1:00PM  
and 5:00-6:30PM

# ROCKVILLE ART LEAGUE



**Attach one 2-column form (below) to each entry:** (Please note: a REF# will be given to you at registration.)  
Tape form to the back upper right corner of each work. The left side will be cut off and used to compile the program.

-----CUT ALONG THIS DOTTED LINE-----

Attach tape to right side of this form and tape to back upper right corner of your work.

TAPE HERE ----->

**WORK 1:** REF # \_\_\_\_\_ REF # \_\_\_\_\_

ARTIST \_\_\_\_\_ ARTIST \_\_\_\_\_

TITLE \_\_\_\_\_ TITLE \_\_\_\_\_

MEDIUM \_\_\_\_\_ MEDIUM \_\_\_\_\_

PRICE \$ \_\_\_\_\_ PRICE \$ \_\_\_\_\_

PHONE \_\_\_\_\_ EMAIL \_\_\_\_\_ PHONE \_\_\_\_\_ EMAIL \_\_\_\_\_

-----CUT ALONG THIS DOTTED LINE-----

Attach tape to right side of this form and tape to back upper right corner of your work.

TAPE HERE ----->

**WORK 2:** REF# \_\_\_\_\_ REF # \_\_\_\_\_

ARTIST \_\_\_\_\_ ARTIST \_\_\_\_\_

TITLE \_\_\_\_\_ TITLE \_\_\_\_\_

MEDIUM \_\_\_\_\_ MEDIUM \_\_\_\_\_

PRICE \$ \_\_\_\_\_ PRICE \$ \_\_\_\_\_

PHONE \_\_\_\_\_ EMAIL \_\_\_\_\_ PHONE \_\_\_\_\_ EMAIL \_\_\_\_\_