



RockvilleArtLeague.org

Vol. XXV No. 1

September 2015

NEXT MEETING: September 3rd, 6:30PM
Jorge Luis Bernal: Encaustic Monotypes Presentation

Message from the President, Fred Ruckdeschel

Dear Fellow Artists and Art Lovers,

For some of us, the sense of summer ends with the starting of school, or Labor Day, or early September. For me, however, summer ends when the weather cools and the trees are well on their way to fall colors. That means, generally, late October. A long way off. But will I finish the work in my garden by the end of August this year,

so I can switch to my other priority activity, making collages?

Gardening is creative for me; and my garden is my workout gym, especially this summer when I failed to give a second thought to what to do with the area where a very large Juniper tree

had been growing at least 50 years. The Juniper never recovered its aesthetic appeal after Snowmageddon in 2009. Also, an arborist believed it would not likely fill in well, if I cut it back where it grew over the sidewalk.

It grew in the sunniest area in our yard, so tomatoes now have priority for about forty square feet. But for the remaining 400 square feet, obviously another garden had to be dug and planted. I never thought of seeding a lawn. It would have been so easy. Off and on for two to three weeks, I had dug through a fine mesh of roots and some roots thinner than a pencil, and pulled up dozens of larger roots, many of which took all my strength – up to a safe limit, after all, age has its limits. But then all of a sudden, I thought of the alternative, grass. Too late and too boring as well as no body building – arms, chest, back and legs and all for free in the open air.

My, I do love being outside. But making collages is definitely an indoor activity if paper is involved. So back inside I will be when the urge to collage overcomes my urge to finish developing more of my garden. But by September? Not likely. More like mid-

September if I can just get myself out quickly after breakfast.

But what does this have to do with art? Well, I enjoy creating both, usually with only a general direction or plan ahead of time for either, working out the design and details as I go along. That really is a strong character trait for me. Even my wife is that way, especially when we plan a trip in our small RV or visit London or Paris.

Both my garden and my art have structure, for sure. Color, too. And repetition, form, line, balance in the garden too, and I hope unity. Of course, there's also a generous amount of felicitous spontaneity. Why not! That's also something Kristin and I rely on when traveling. Plain good luck.

So as the next RAL "year" is almost upon us, what can we look forward to? New programs at meetings, thanks to earlier planning by Liliane and future planning by Sallye Mahan-Cox and Nancy Hannans.

Also RAL will have a show from early November to late January at the Federal courthouse in Greenbelt. There is substantial space for paintings larger than the Mansion can handle, and gobs of space at and below the limits of our semi-annual members' shows – both medium-sized and small work. Nadia Azumi arranged for this venue. Originally it was for last year, but the Board decided RAL could not support the show then with sufficient volunteers, given the other two outside shows last fall.

When I visited the courthouse about six weeks ago, I found out that we may use an experienced man to hang our show and who is paid by the courthouse. There are other flexible details that are likely to make putting on a show easy for those RAL members who participate. We'll keep you informed about submitting work for jurying as well as other

details. As you may recall, all able-bodied members participating in outside shows must help put it on. So by submitting work, you should expect to help out one way or another.

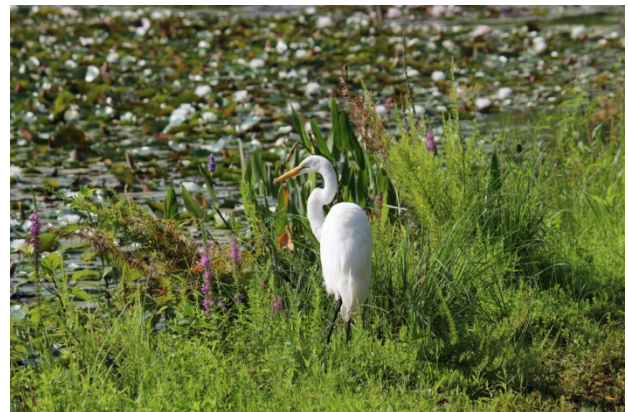
Since I have mentioned volunteering, please read, "RAL Volunteer Opportunities: 2015-2016", in this newsletter, which Emily Pearce has prepared. There may be an activity you or you and a friend might like to take a crack at. A book club focused on art – biography, art history, contemporary art, or design or color? Check out what Emily has noted, please.

Of course, we can also look forward to our semi-annual juried Mansion shows.

Finally, RAL applied for and was awarded funds from the County's Executive Ball to encourage artistic endeavors in the county. The Board anticipates using the funds for an educational program for members. In May 2014, an earlier award funded a workshop with Patricia Zannie, "Japonaise' Influence on European Artists". If you would like to have a workshop on a particular subject or by a certain artist, please let me know. The Board is looking for additional ideas.

I look forward to seeing many of you in the coming months and wish you all the best in your artistic endeavors,

Fred Ruckdeschel – RAL President





September's Speaker: Jorge Luis Bernal

Learn about encaustic – hot wax painting at September's meeting. Jorge will explain the process and then demonstrate the process. After the presentation, you will be able to try this wonderful medium and process.

www.jorgeluisbernal.com

RAL Volunteer Opportunities: 2015-2016

RAL has *many* volunteer opportunities available for its members. The following is a brief list of upcoming opportunities:

- **November 2015 (Day TBD):** RAL Members' Show at the Greenbelt Federal Courthouse, Greenbelt, MD.
- **November 2015 (Day TBD):** Decorating the RAL Christmas tree at Glenview Mansion
- **December 1-4, 2015:** Registration and hanging for the RAL Juried Members' Show
- **December 6, 2015:** Opening reception for RAL Juried Members' Show*

- **January 4 & 5, 2016:** Pick-Up for Winter RAL Juried Members' Show
- **February 28, 2016:** Artwork Delivery and Judging for City of Rockville Student Art Show at Glenview Mansion
- **March 1-4, 2016:** Hanging, certificate-writing, and tagging for City of Rockville Student Art Show at Glenview Mansion
- **March 6, 2016:** Opening reception for City of Rockville Student Art Show at Glenview Mansion
- **March 24, 2016:** Pick-Up for City of Rockville Student Art Show at Glenview Mansion
- **April 26-29, 2016:** Registration and hanging for the RAL Juried Members' Show
- **May 1, 2016:** Opening reception for the RAL Juried Members' Show*
- **May 31, 2016:** Pick-Up for Spring RAL Juried Members' Show

In addition, ongoing volunteer opportunities exist:

- Programming and event planning
- Contributing to the RAL monthly newsletter (reviews of art openings, book reviews, etc.)
- Organizing "paint outs" or field trips to local galleries and art museums
- Hosting art talks or book groups
- Organizing supply swaps
- Planning studio tours, etc.

If you (or together with a friend) are interested in volunteering, please contact Fred Ruckdeschel at:

fred.ruckdeschel.and.art@gmail.com.

*If you are interested in volunteering for the opening receptions of RAL Members' Shows please contact Martha Campos at:

ximenace@verizon.net

--Emily Pearce

MEMBERSHIP DUES

Membership dues for September 1, 2015 through 2016 are **\$35.00**. Dues increase to \$40 after October 31. Please pay on the web site or send your check (made payable to RAL) to: Susan Dunnell, 11215 Dewey Road, Kensington, MD 20895.

Critique by Penny Kritt

Choosing the *Right* Color

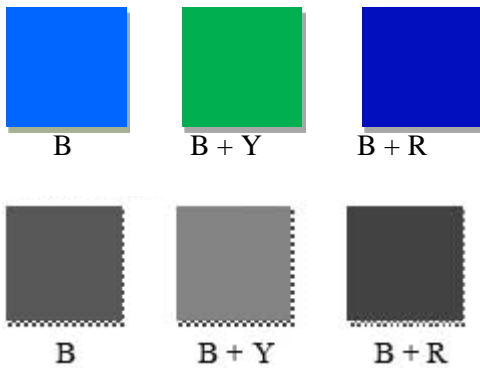
Even if you've never taken an art class, you know that color choices *matter*. All you professional artists, bear with me a minute while I lay some groundwork for the "newbies". I promise to make your patience pay off.

To simplify things, we'll use the color model that says all colors are made of one or more of the primary colors of red, yellow and blue (RYB). White is the absence of all color and black is a combination of all three. The cool and warm colors below are made from one or two primaries.

Further, let's agree that all the primaries are mid tones – although yellow is much lighter than blue and red is in the middle. I've put their grayscale version below each swatch. You'll see that all the squares except the yellow one are a medium gray, nowhere close to black or white.

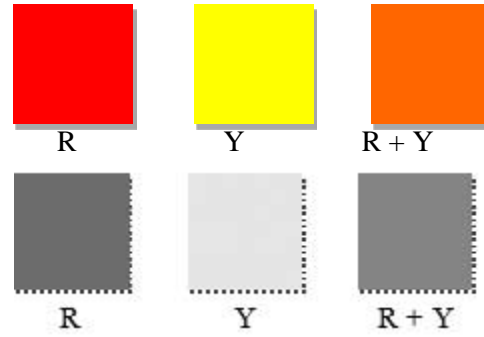
The "cool" colors (blues, greens and purples) tend to be calming.

Cool colors:



Warm colors (reds, yellows and oranges) are more exciting.

Warm colors:

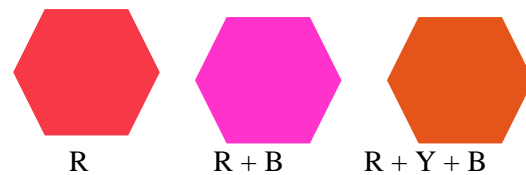


The neutralized version of the colors are usually soothing. Below are versions of colors that are each made with *all three primaries* in varying proportions.

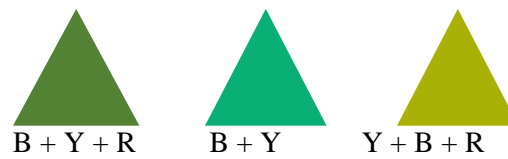
Neutralized colors:



Sometimes, there's only one right color for a particular item or shape. For example, a stop sign will always be just one shade of red. Below are three colors of red, but only the left one will do for a traffic light or tail lights on a car.



The same goes for other colors. Consider pine trees. For a natural look, only the first green will do. The other colors are fine for abstracts, but the middle one will never work and the one on the right means your tree is dying.



OK, these are pretty obvious. But what do you do with something that requires a more creative approach? If you're painting a large close up view of a single rose, choosing the same color for all the shadows will be boring. Likewise, painting every tree in your landscape the same green, no matter how great that color is in *small* amounts, will just kill an otherwise great composition.

Here are a few tricks to test color without actually changing your composition. You can try as many as you like without having to undo a proposed change.

Color swatches:



The samples above are for Daniel Smith watercolors. Each one is about one inch wide and three inches long. There is no black border around my samples so I can hold each one directly against my paper to determine what will work best. The upper portion is the paint straight from the tube. The lower portion is diluted. Notice how the proportions of the three primaries changes when you add water. The turquoise loses most of the black component in the upper portion. With the orange, the brown upper portion loses most of its blue component, thereby revealing a brighter orange when diluted.

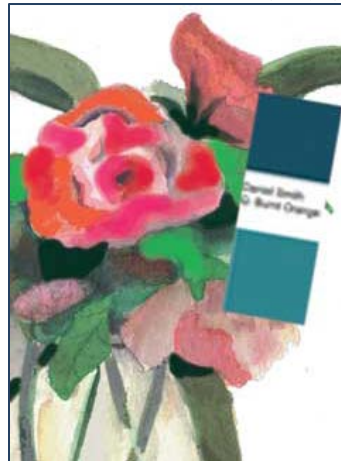
I do this for each tube of paint I buy and it's particularly helpful to see how much color shift there is when adding water. The lighter smears on the samples are where I tested how much paint I could lift off. This proves that paints made with blue colors made with phthalo pigments are staining colors and less likely to lift.

Acrylics and Oils:

You can do the same tests with other types of paint. Just use medium or water to dilute them. Depending on the pigments in each paint, you might find a similar color shift when the viscosity (thickness) of the paint is lessened.

Here's how it works:

Below is a floral painting that desperately needs a background. I've determined that it needs a cool color, but which one? Here's a swatch that I can hold up against the painting to see whether I like the darker value that's also got a bit more black in it. Maybe the lighter, brighter version might work better. If I decide I want a custom color, I'll just get a scrap of paper and invent what I need. *And there's no harm done if my guess was wrong!*



Plastic sheet:

I always have a sheet of clear plastic like for an overhead transparency. I use water soluble markers and crayons on it to test possible changes. In the image below, we can decide if a white background works better than a black one (upper right) or a mid tone gray one (lower right).



Covering your painting with a sheet of transparent plastic will protect it and let you try as many options as you like. There are two drawbacks to keep in mind. With dry-erase markers or crayons, it's hard to get the *exact* color you want. Also, you probably have to make do with hard edges instead of being able to blend them into another color.

Tip:

Clear plastic transparencies keep getting lost *because they're clear!* I always take a piece of white masking tape about an inch long and use a black marker write my initials on it. Why? Because even the white masking tape disappears on my white art table. That gives me a fighting chance to find it.

I'm still offering free, gentle critiques for future issues. Just send a jpg of your painting or drawing to pennykritt@aol.com.

**For classes or private lessons, contact Penny at
301/989-1799
©Penny Kritt 2013**

MEMBER NEWS

TWO DAY ENCAUSTIC MONOTYPES WORKSHOP Jorge Bernal

I love the encaustic monotype painting process. It is fun, simple and fast. I encourage you to experiment with this medium and make it your own.—Jorge Bernal



Saturday & Sunday 10AM to 4PM
Location: Washington Art-Works
12278 Wilkins Avenue Rockville MD 20852
October 3 & 4
November 7 & 8

Workshop will cover:

- Equipment required to do encaustic monotypes
- Materials, techniques, and knowledge needed to experience this process
- Making encaustic medium
- Encaustic color stick making process
- Paper types, quality and absorbencies
- Work surfaces: Wood cradled panel substrates, and gesso applications
- Painting & drawing techniques, color stick applications, mark making
- The creative process, ideas and concepts
- Health and safety

Format: Lecture and demonstrations: We will experiment with several types of papers and scrolls. Introduce new tools (mark making), stamps, soft lead pencils, charcoal, rubber tipped tools, stencils, plastic grid material, bubble wrap in a variety of sizes, soft kitchen utensils, scrapers, clay-modeling tools, etc. We

will do additive and subtractive processes, and try various tools and plate temperatures in order to become comfortable with the many possibilities. All this will include plenty of time to paint! Each day we will have Q & A time and a critique of the work.

COST: \$325.00 tax and supplies included. A list of small tools and incidentals for students to bring will be sent prior to the class.

Class limited to 8. If you have any questions, please email me: jorgeluisbernal@gmail.com

17th St Corridor from Riggs Pl to P St (in DC)
Saturday, Sept. 12th
12pm - 6pm



Hyattsville Arts Festival
5331 Baltimore Avenue, Hyattsville,
MD 20781
Saturday, Sept. 19th
11am - 5pm



Happy
© Copyright Michael Auger
www.arty4ever.com



Clarendon Day
Clarendon Metro Stop, VA
Saturday, Sept. 26th
11am - 6

Mark your Calendars!

Join me this September for some fun art events!



17th Street Festival (Also my 40th Birthday!)

**Jorge Bernal at Washington ArtWorks
Landscapes: "The Land"**

September 11th - 23rd

Opening Reception Friday September
11th 5:30 PM to 8:30PM
12276 Wilkins Avenue Rockville, MD
20852



"Gila" National Forest / 36" x 24"
Encaustic Monotype on wood pane



"Zuni Pueblo" 42" X 30"

**Jorge Bernal at ENO Wine Bar
Exhibit**

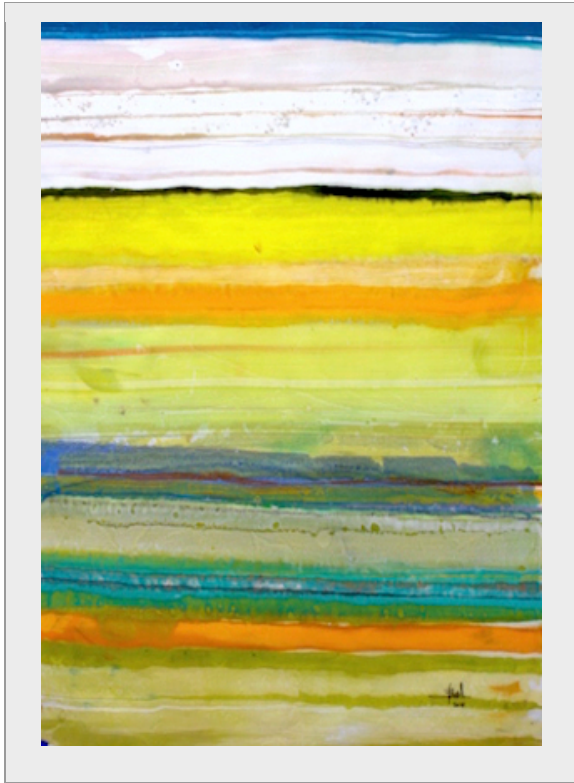
2810 Pennsylvania Ave
NW, Washington, DC

**Contemporary Landscapes
October 1st to November 30th
Reception Friday October 2nd,
6:00 to 7:00PM**



**Jorge Bernal: "Gala and Art Sale" / 7th Annual
Fundraising**

Sunday September 13th 2-6 pm
632 Agua Fria St., Santa Fe, NM



“Varadero” 36”X 24” Encaustic Monotype on wood panel

ART OPPORTUNITIES

LANDSCAPE PAINTING WORKSHOP



The Arts Club of Washington
2017 I Street NW, Washington, D.C.

2015 FALL SESSION/Sept. 23 – Nov. 18
9 sessions - \$175, single sessions \$25 per class
Wednesdays 10-1/Instructor Pattee Hipschen
www.patteehipschen.com

This class is structured to accommodate all artistic levels from the beginner to the intermediate. Students learn ways to improve their paintings through composition, color and technique using both oil and acrylic paint. Instruction includes individual focus as well as short demos. Students bring their own photographs or other reference materials, as needed. Please e-mail patteepower@msn.com with questions and/or to reserve a session.

Exhibit Opportunity at the Winer Family Gallery

The Winer Family Gallery at Shaare Tefila Congregation in Olney, MD is seeking artists residing in the greater Washington, DC, and Baltimore regions to exhibit two-dimensional artwork in the gallery. Judaic and non-Judaic work will be considered. All work must be suitable for a multi-generational audience. Exhibitions will be 4 - 6 weeks in duration during late 2015 and 2016. Sales will be handled by Shaare Tefila and a 25% commission collected. If interested in being considered, please respond by **September 6, 2015**. Please send an email to winerfamilygallery@gmail.com and include a resume, 6 high resolution images, an image list with title, sizes, medium, year work was created, and price.

Northern Virginia Art Center's new Specials Exhibitions space. The Northern Virginia Art Center is searching for talented professional artists with a cohesive body of work to exhibit in their new Special Exhibitions space in the heart of Crystal City's thriving restaurant district. 380 square feet of gleaming exhibition space available for monthly exhibits of 2D or 3D art! Their full time gallery staff will assist in exhibit installation, process sales of your work, and will coordinate your opening reception, all for a small fee and low sales commission.

Eligibility: Open; **Deadline:** Ongoing
Entry Fee: N/A

http://novaartcenter.org/our-mission/show-opportunities/?utm_source=PROJECTOR%206-27-13&utm_campaign=Projector&utm_medium=email

Rockville Innovation Center Call for Entries

Rockville Innovation Center is interested in showcasing the work of local artists in their gorgeous location. The RIC is looking to fill its beautiful space with artwork by metro area artists and photographers.

<http://www.visartsatrockville.org/call-for-entries/feast>

Eligibility: Open; **Deadline:** Ongoing

Entry Fee: N/A

DC Photo Grid. The DC Photo Grid is an aggregated map of the city generated from user-submitted photographs, and the DC Crowd-Sourced Video Project offers a constantly looping portrait of the city as viewed by its inhabitants.

http://www.dcphotogrid.com/?utm_source=PROJECTOR+6-27-13&utm_campaign=Projector&utm_medium=email

Eligibility: Open; **Deadline:** Ongoing/**Entry Fee:** N/A

GLENVIEW MANSION CONFERENCE ROOM SHOWS

You can show your artwork in Glenview Mansion for one month if you have received a 1st, 2nd, 3rd or honorable mention award in an RAL juried show. Artists may have both rooms to exhibit in if a second artist doesn't sign up for the same month within two months of the show's start date. The receptions at Glenview mansion are 1:30-3:30 PM on the **Sunday** after hanging. Preferred drop-off and pick-up times for Glenview Shows are from 9 am to 12 noon. Drop off/pickups are Mondays (unless a holiday). If you are unavailable on the date for pickup, please arrange for someone to pick up for you. There is no room to store your artwork at the Mansion. If you are unable to drop off/pickup on the assigned dates and you can't find someone else to dropoff/pickup for you, please choose a month in which you can make those dates.

For artwork delivery, please unwrap your work and take the wrappings with you. Please bring pliers (needle nose are easy to work with). You may use the hand truck that is at the Mansion to move your artwork from your vehicle. There is no staff at the mansion available to help you move your artwork into the conference rooms. You are responsible for hanging your own artwork, with help from the Mansion staff. If you don't have labels for your work, please fill out the RAL cards that will be available. If you print your own, print them on card stock. Do not use the sticky Avery labels, unless you adhere them to foam core or card stock. **Contact Diane Jeang, Glenview Member Show Coordinator, (301) 871-1589 or swinedoc@yahoo.com with questions.** If you need to contact Julie Farrell, please send an email tojfarrell@rockvillemd.gov.

Monday delivery and hanging: 9AM–12PM / Sunday Gallery Opening: 1:30—3:30PM

Wednesday-MondayPickup: 9AM—11AM

2015		Monday Deliver and Hang Before 12 noon	Sunday Gallery Opening 1:30 – 3:30 pm	Wednesday / Monday Pick-up Before 11 am
SEP		Aug. 24	Sept. 1	Sept. 28
OCT	Eric Gross (2)	Sept. 28	Oct. 4	Oct. 26
NOV	Emily Pearce + Regina Price	Oct. 26	Nov. 1	Nov. 30
DEC	RAL Winter Show	Nov. 30	Dec. 6	Jan. 4
JAN	Sabiho Iqbal	Jan. 4	Jan. 10	Feb. 1
FEB	Carlos Garcia (2)	Feb 1.	Feb. 7	Feb. 26 (9-11am)
MAR	Student Art Show	Feb. 28	March 6	March 24
APR	Fred Ruckdeschel (2)	March 28	April 3	April 25
MAY	RAL Spring Show	April 25	May 1	May 25
JUN	Board Member's Show	May 31	June 5	June 27
JUL	Diane Jeang	June 27	July 10	Aug. 1
AUG		Aug. 1	Aug. 7	Aug. 29
SEP	Jorge Bernal (2)	Aug. 29	Sept. 11	Oct. 3
OCT	Linda Greigg + Suzie Weiss (2)	Oct. 3	Oct. 9	Oct. 31
NOV		Oct. 31	Nov. 6	Nov. 28
DEC	RAL Winter Show	11/28 & 29	Dec. 4	Dec. 30

For additional information for members hanging in the conference rooms, please refer to the RAL web page: <http://www.rockvilleartleague.org/glenview.pdf>

At least one platter of finger foods (cookies, crackers/cheese, veggies/dip) should be supplied by the RAL artist on the day of the opening reception. Cups/napkins/water is provided by the City of Rockville for opening receptions. The Mansion will be open at 1 pm for the artist on the day of the opening reception.

Glenview/Open Show Coordinator: Diane Jeang, (301) 871-1589 E-mail: swinedoc@yahoo.com

RAL ONGOING SHOW LIST

Twinbrook Library - 202 Meadow Hall Drive, Rockville, Maryland

Shows are now 1 month in length. 5 medium to large paintings, Contact person: Chris Lindy (240)-777-0240, christinelundy@montgomerycountymd.gov

<u>Name</u>	<u>From</u>	<u>To</u>
open	June 15, 2015	Aug. 15, 2015

Thomas Farm Community Center – 700 Fallsgrove Drive, Rockville, Maryland

12-16 medium to large paintings, Contact person: Martha Coester (240) 314-8842

<u>Name</u>	<u>From</u>	<u>To</u>
open	Aug. 15, 2015	Oct. 15, 2015
Valthea Fry	Oct. 15, 2015	Jan. 15, 2016

Marilyn J. Praisner Library – 14910 Old Columbia Road, Burtonsville, Maryland

10 small to medium or 5-6 large paintings (10 hanging chains), Contact person: (240) 773-9455, Vera Ramaty.

<u>Name</u>	<u>From</u>	<u>To</u>
Open	Sept. 15, 2015	Oct. 15, 2015
Opan	Oct. 15, 2015	Dec. 15, 2015

RAL BOARD OF DIRECTORS

<u>Position</u>	<u>Name</u>	<u>Phone</u>	<u>e-mail</u>
President:	Fred Ruckdeschel	301-320-3911	fred.ruckdeschel.and.art@gmail.com
1st VP:	Craig Whitt		
Treasurer	Patricia Zannie	301-962-8581	patriciacollages@yahoo.com
Secretary	Emily Pearce	919-699-2547	ekepearce@gmail.com
Membership	Susan Dunnell	301-949-1514	dunnz@erols.com
RAL Juried Show Coordinator	Emily Pearce	919-699-2547	ekepearce@gmail.com
Publicity/mkt. Newsletter editor	VACANT Susan Dunnell	301-949-1514	dunnz@erols.com
Program coordinator	Liliane Blom	301-518-5312	lilianeblom@aol.com
Communications	Eric Goss	301-956-3099	edg16@hotmail.com
Open shows	Diane Jeang	301-871-1589	swinedoc@yahoo.com
Glenview member shows	Diane Jeang	301-871-1589	swinedoc@yahoo.com
Hospitality	Martha Campos	301-251-0643	ximenace@verizon.net
Historian	Patria Baranski	301-424-6193	geowell7@hotmail.com
Web master	Michael Auger	202-670-2789	RAL@arty4ever.com
Founder, Hon. lifetime member	Eileen Mader	301-762-6458	

